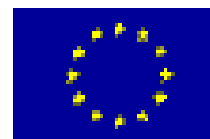


TWINBAS		Document ID:	Issue:	Status:	Page: 1 (42)
Document Type: Project document		Project: TWINBAS			
Document Description:					
Issued by:	Issue Date: 25/05/2007	Approved by:			Approved Date:



TWINBAS

Twinning European and third countries rivers basins
for development of integrated water resources
management methods

An EC FP6 research project
co-funded within the topic '*Twinning European/third countries river basins*'
under the '*Global change and ecosystems*' sub-priority

Work Package 6

Classification of Water Bodies Volume II: Supporting maps (D6.1)

April 2007



University
of Southampton



**Centre for
Ecology & Hydrology**
NATURAL ENVIRONMENT RESEARCH COUNCIL



IWR



GOBIERNO DE CHILE
CONAMA
REGION DEL BIO BIO



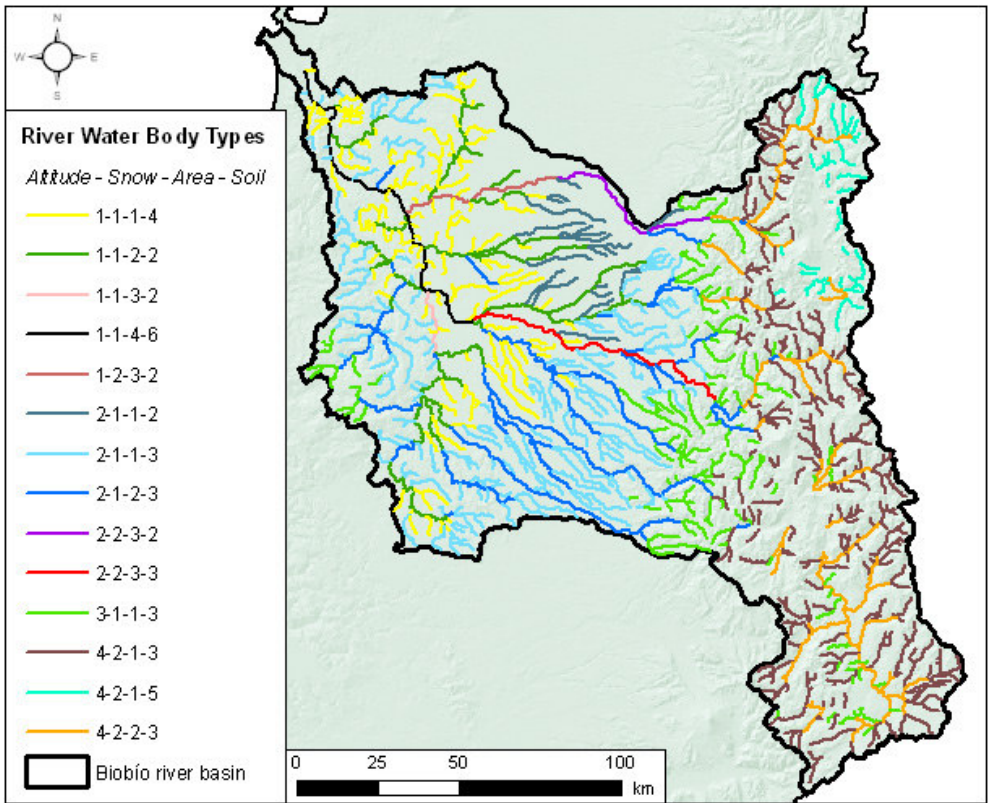
List of contents

WP6 Classification of Water Bodies Volume II: Supporting maps

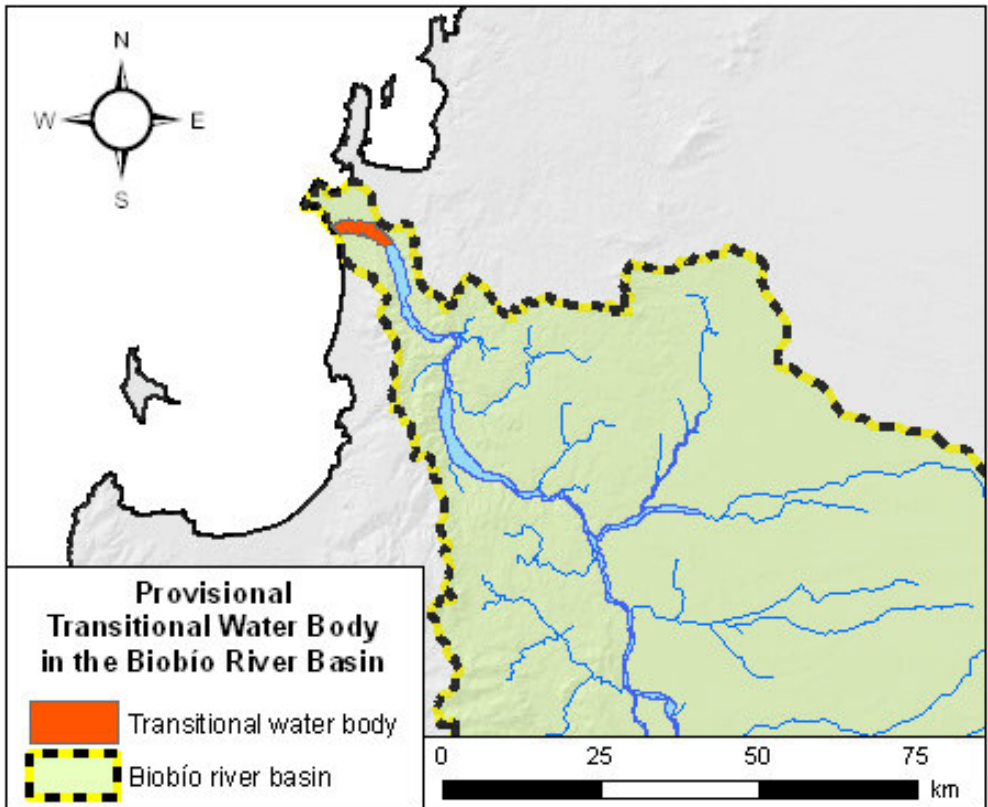
1. Biobío	5
2. Norrström	13
3. Nura	17
4. Okavango	27
5. Thames	35

Biobío

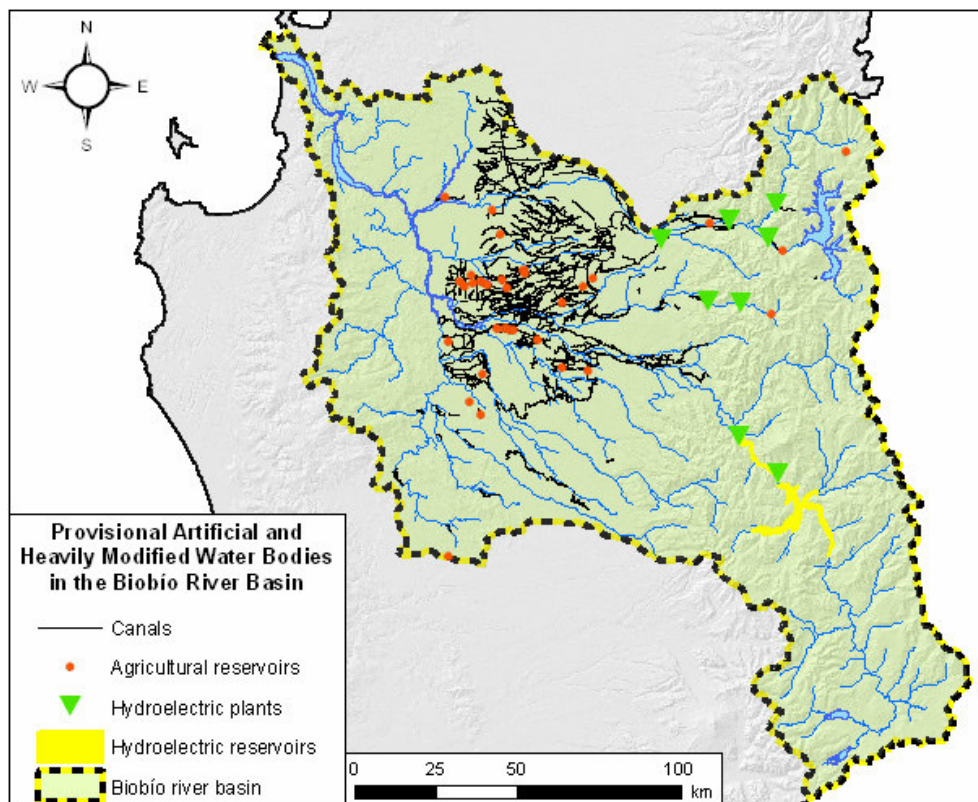
Map	Name	Page
BB1	River water body typology	6
BB2	Preliminary delineation of transitional water bodies	6
BB3	Provisional artificial and heavily modified water bodies	7
BB4	Main drinking water abstraction sites	7
BB5	Land use and protected areas	8
BB6	Degree of naturality of the land cover per reach-specific drainage area	8
BB7	Degree of naturality of the land cover in the total upstream drainage area	9
BB8	Irrigation channel density per reach-specific drainage area	9
BB9	Demographic density per reach-specific drainage area	10
BB10	Impact of flow regulation on hydrological regime	10
BB11	River water bodies potentially under reference conditions	11
BB12	River water body types potentially under reference conditions	11
BB13	Potential reference sites for different river water body types	12



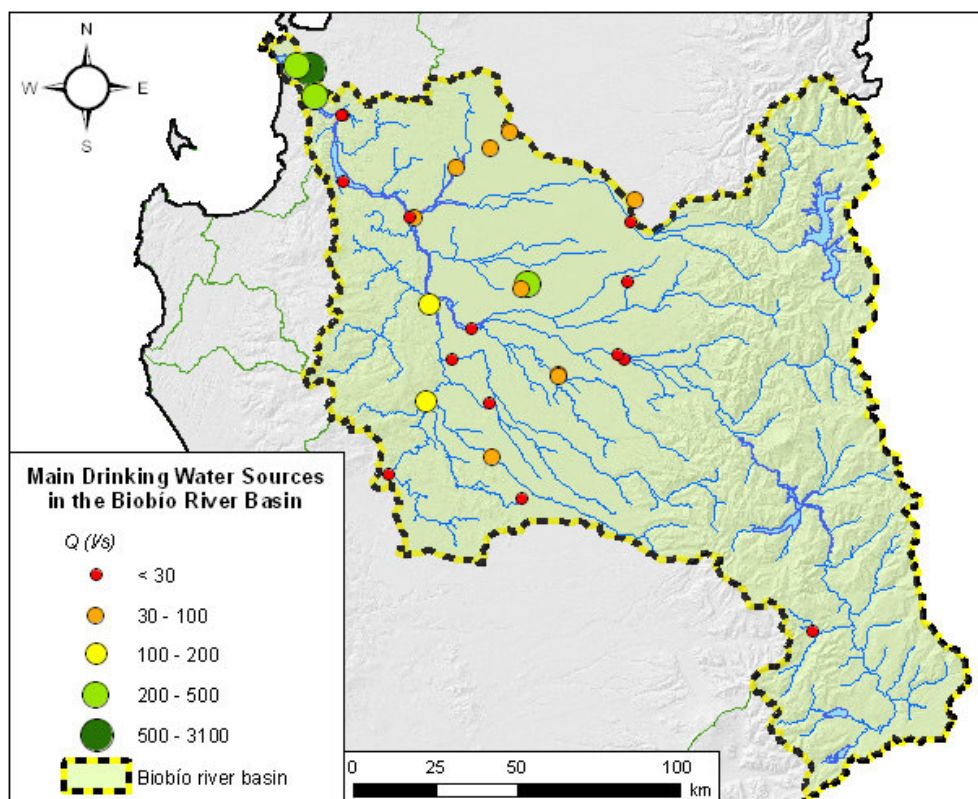
Map BB1 River water body typology



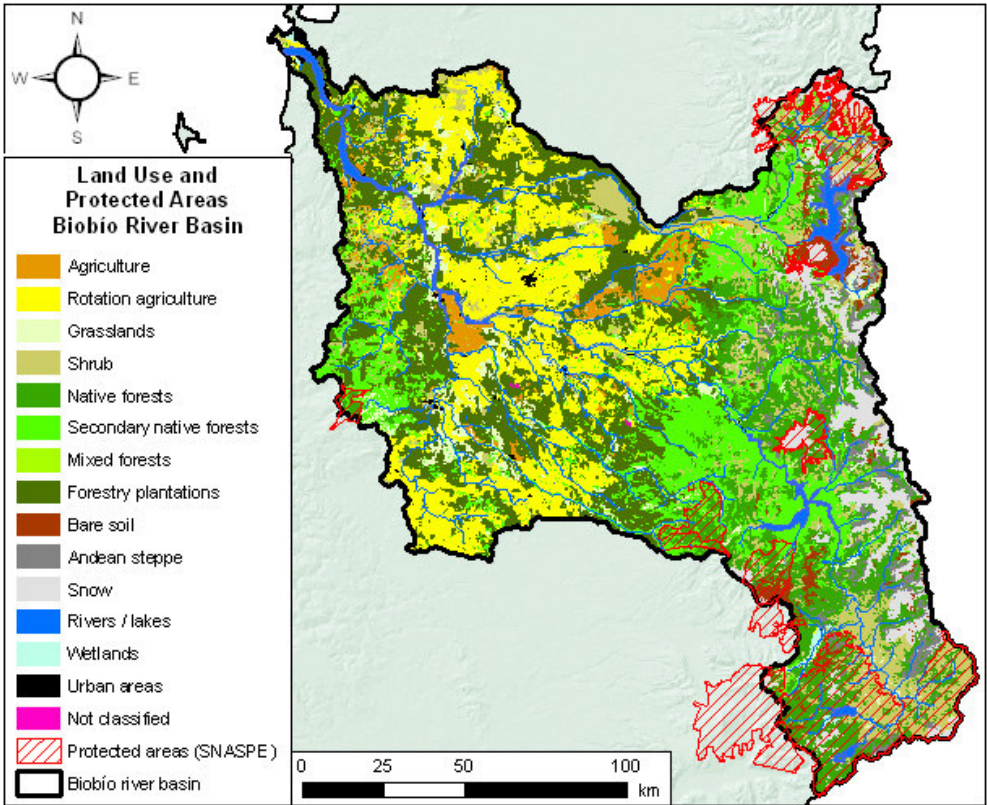
Map BB2 Preliminary delineation of transitional water bodies



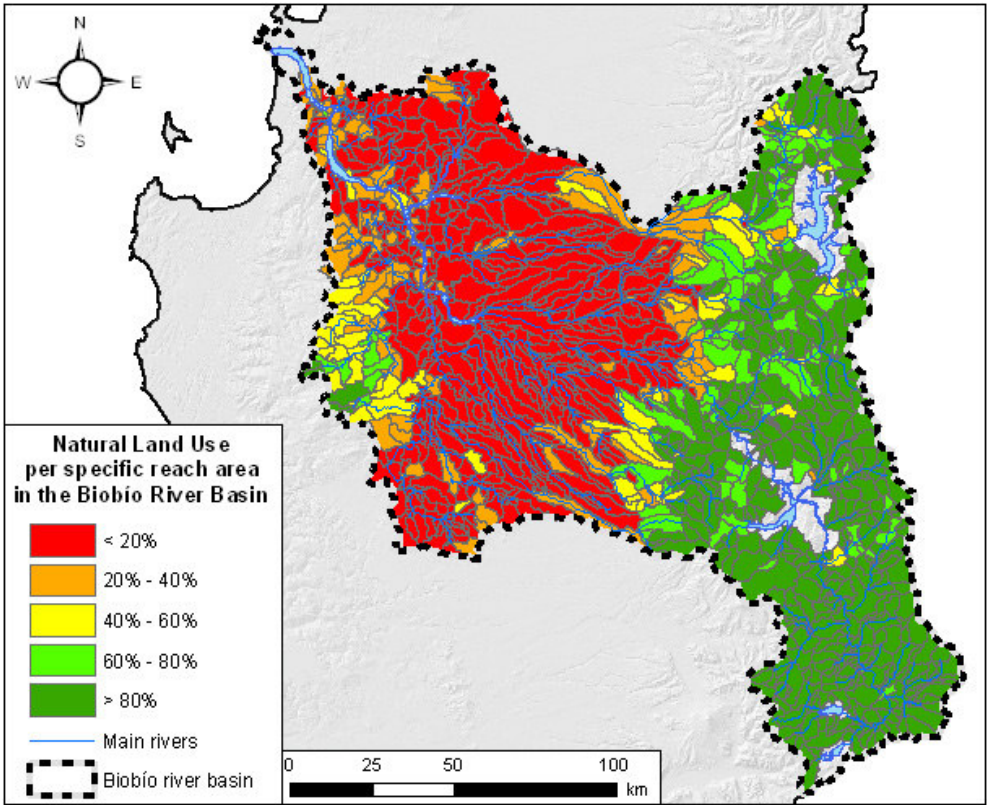
Map BB3 Provisional artificial and heavily modified water bodies



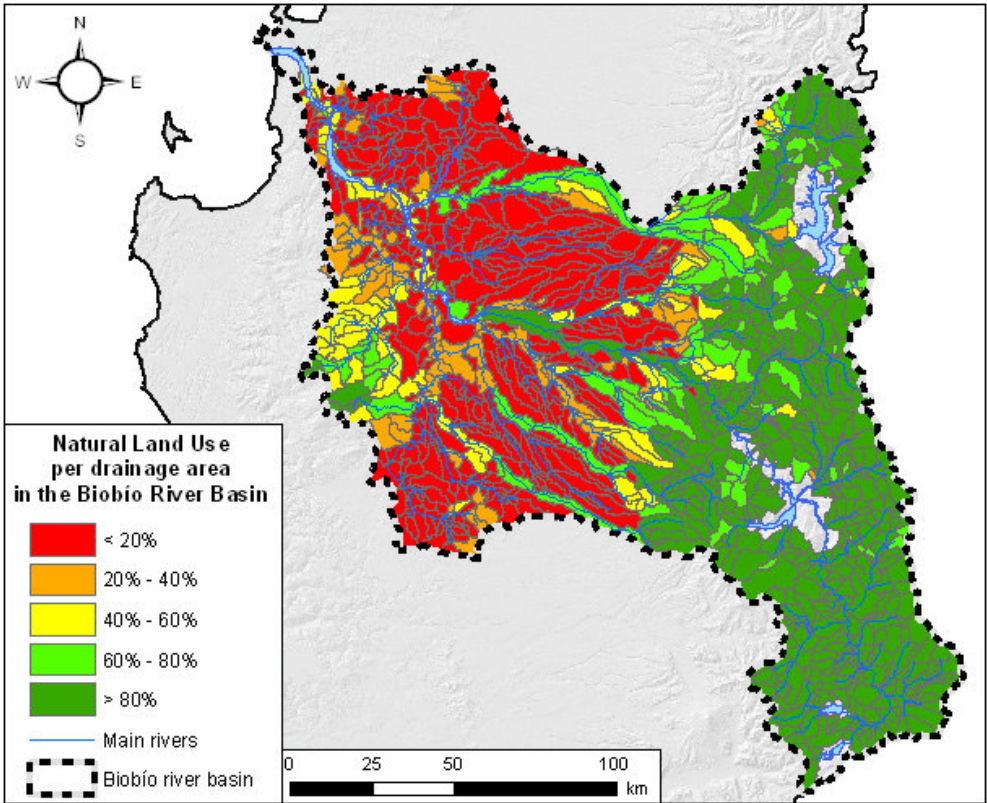
Map BB4 Main drinking water abstraction sites



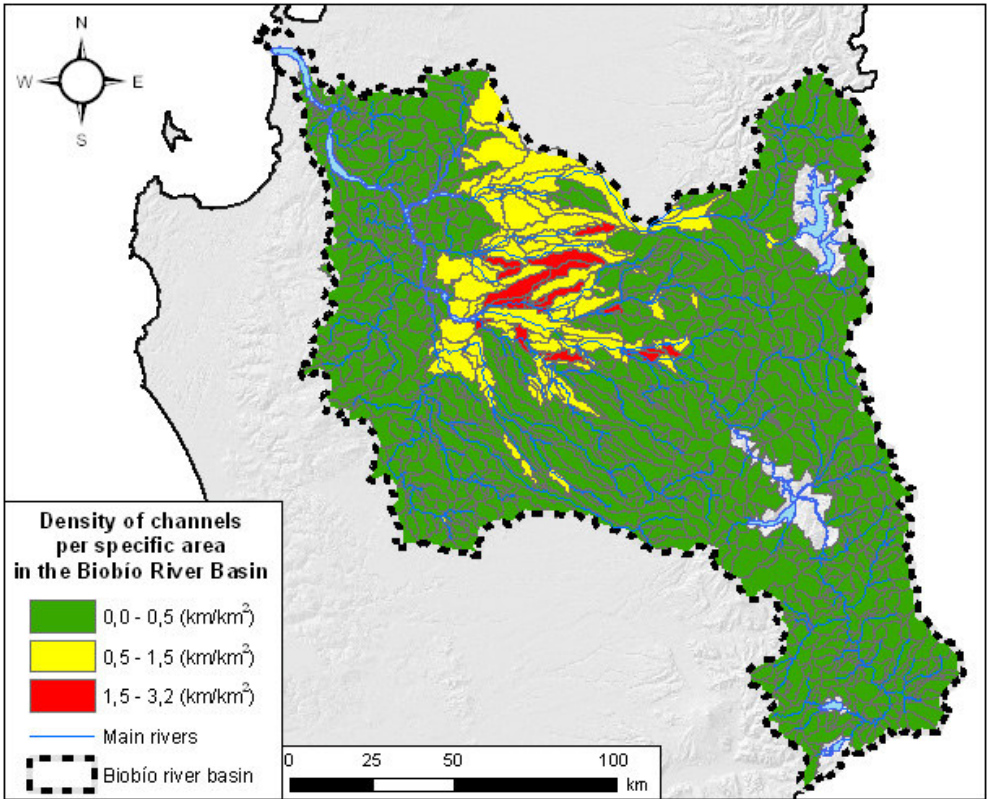
Map BB5 Land use and protected areas



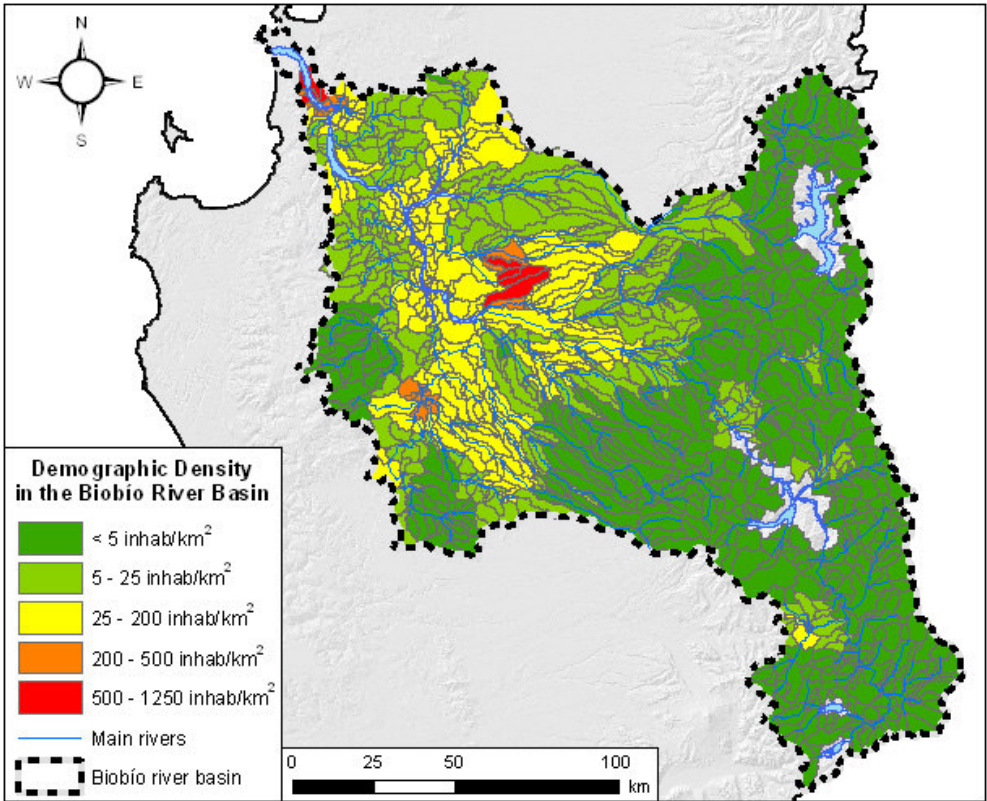
Map BB6 Degree of naturalness of the land cover per reach-specific drainage area



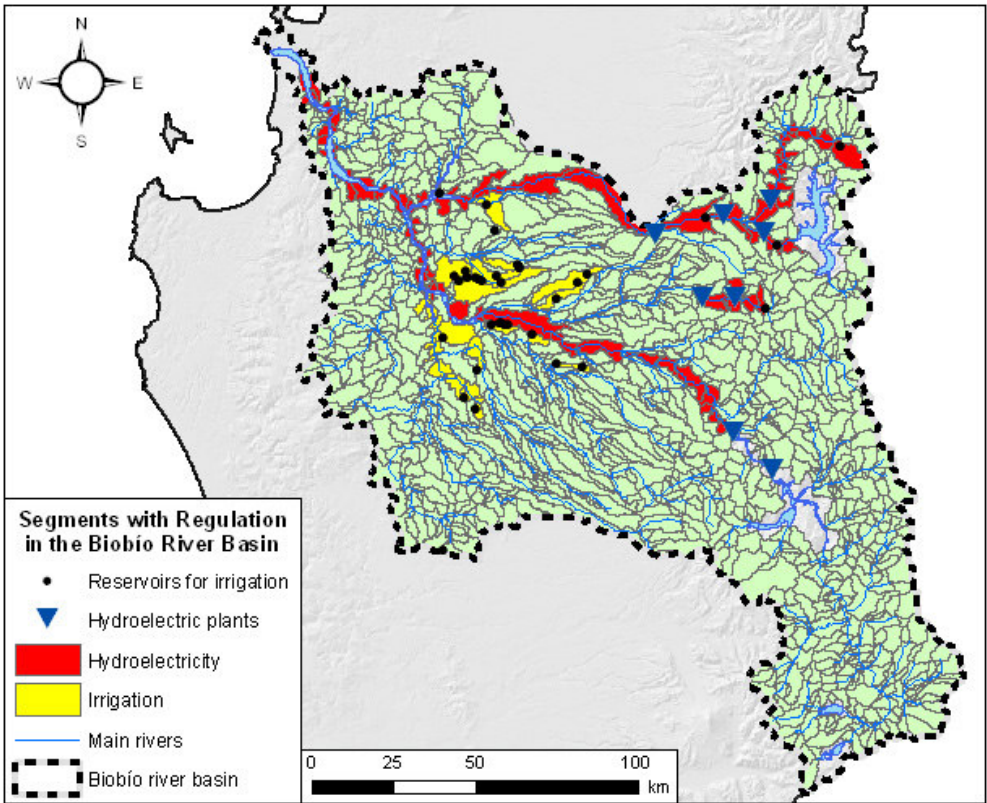
Map BB7 Degree of naturalness of the land cover in the total upstream drainage area



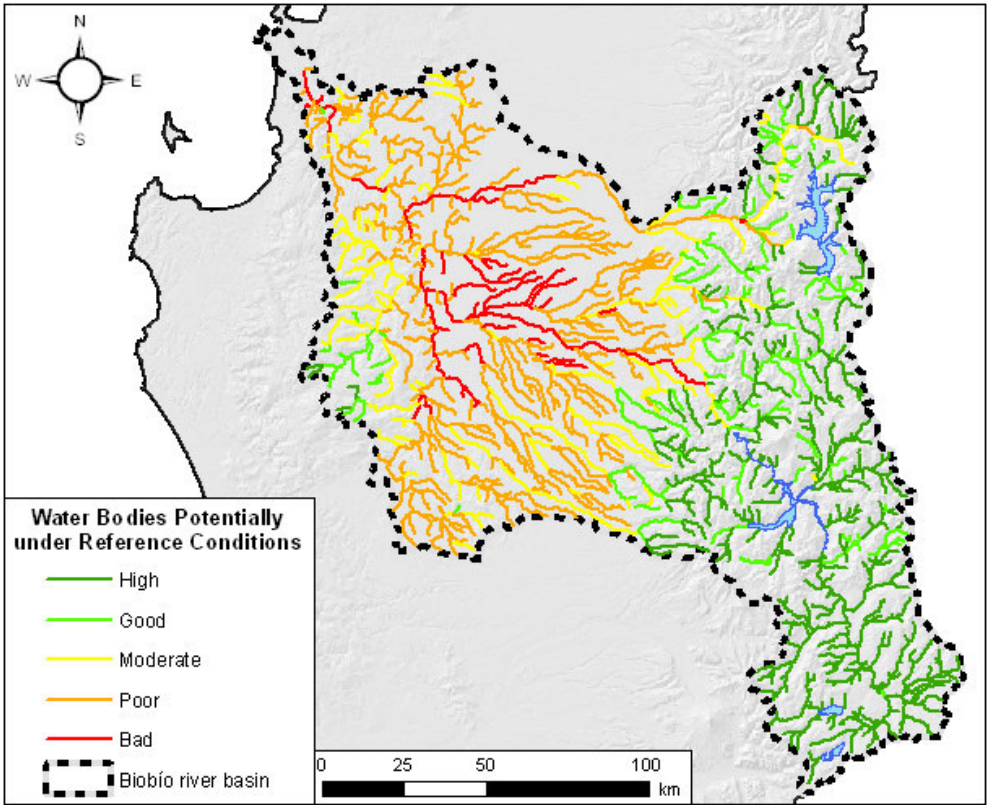
Map BB8 Irrigation channel density per reach-specific drainage area



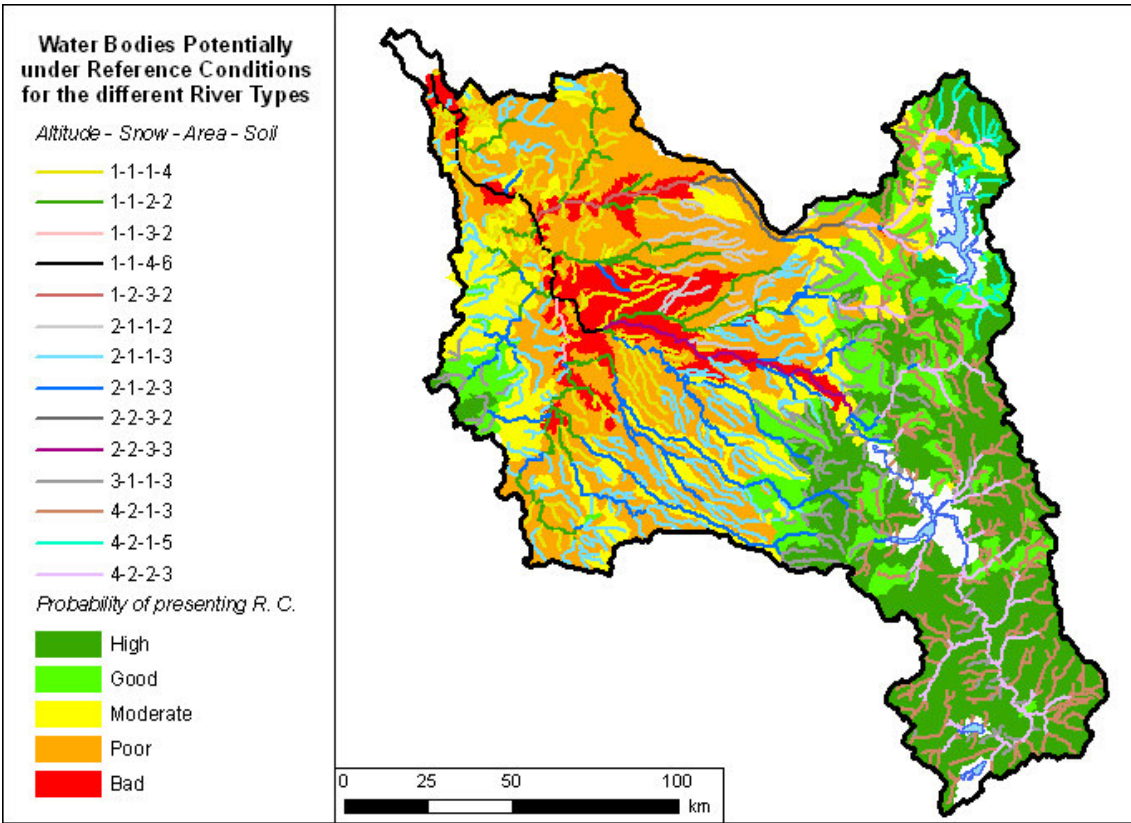
Map BB9 Demographic density per reach-specific drainage area



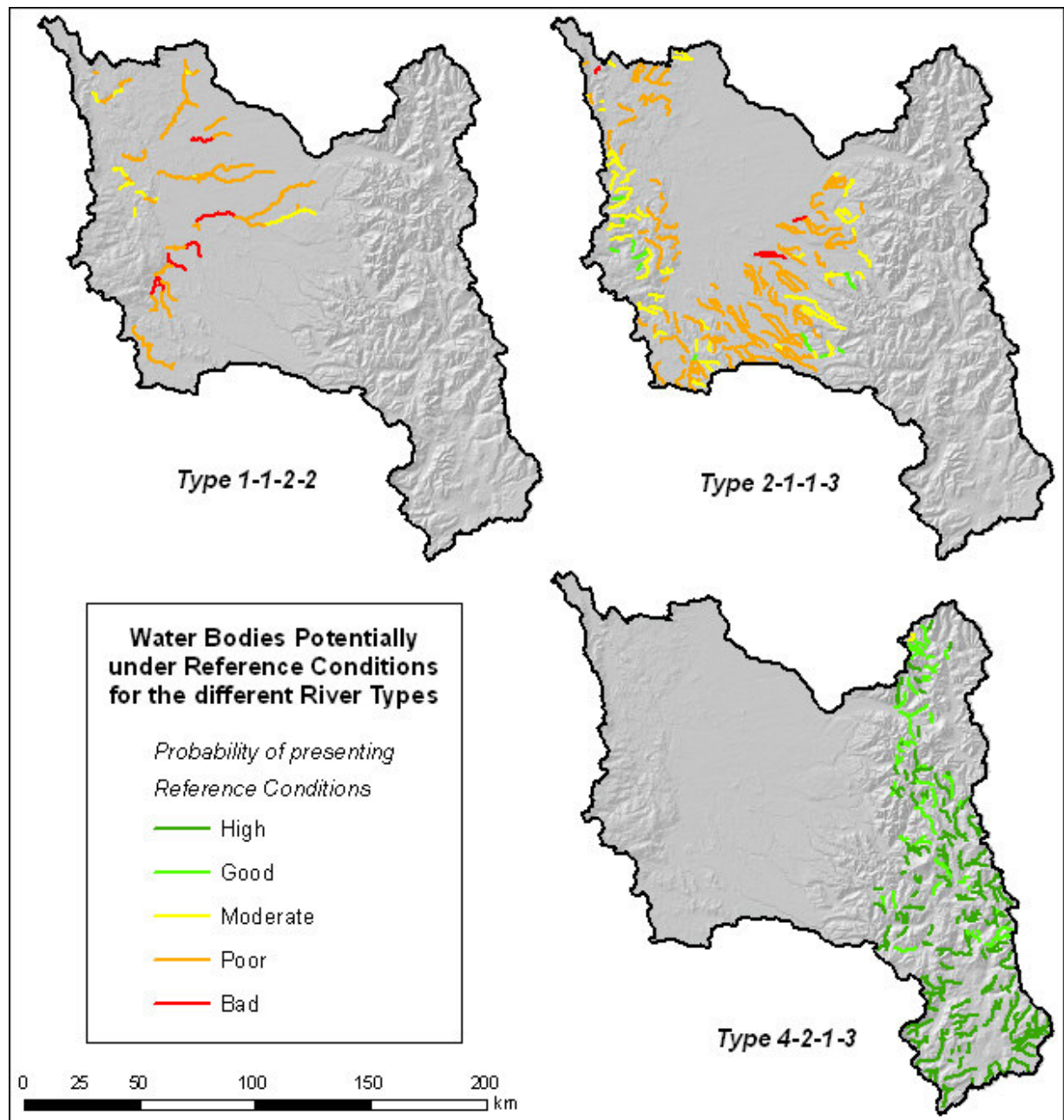
Map BB10 Impact of flow regulation on hydrological regime



Map BB11 River water bodies potentially under reference conditions



Map BB12 River water body types potentially under reference conditions

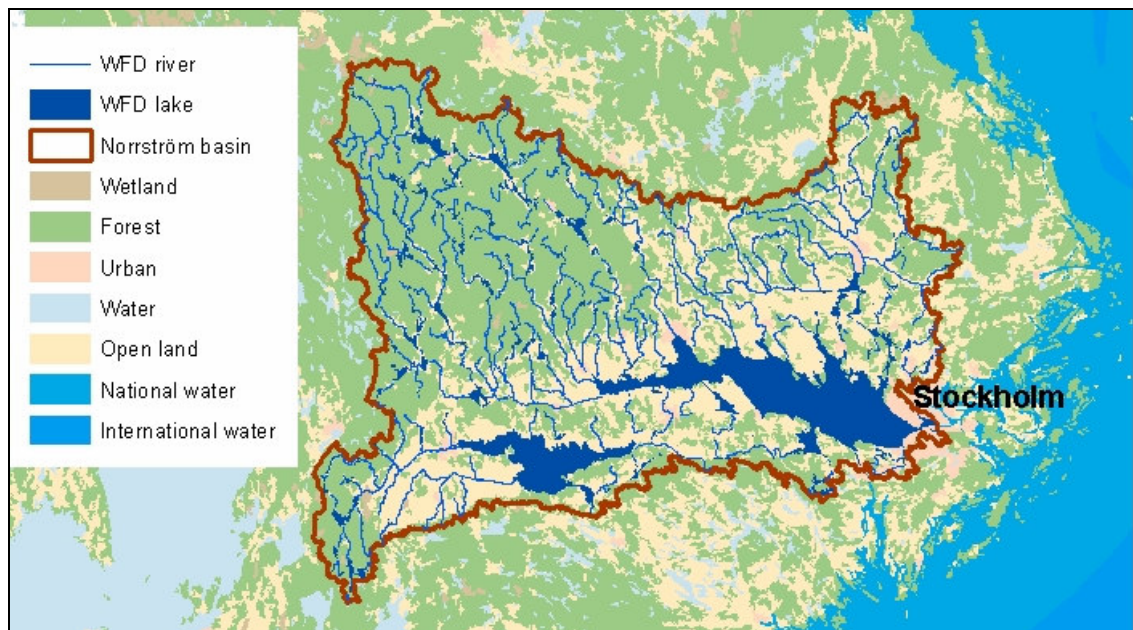


Map BB13 Potential reference sites for different river water body types

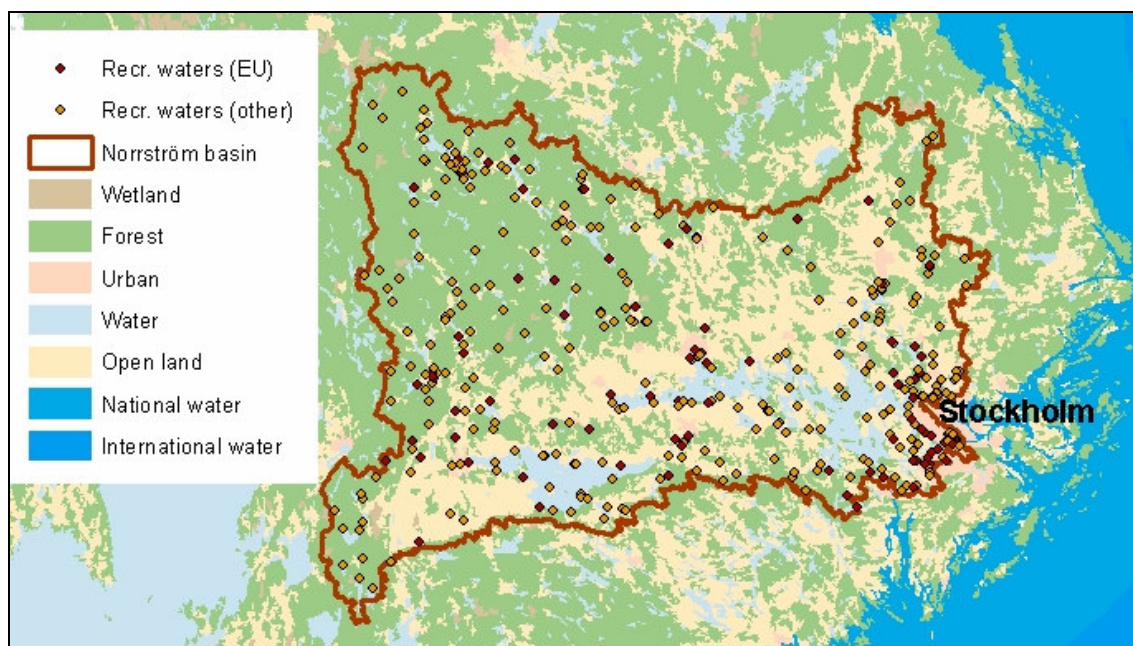
The examples given correspond to Type 1-1-2-2, Type 2-1-1-3 and Type 4-2-1-3). The colour code indicates the probability for a given river water body in that type to present reference conditions. Note how it becomes increasingly difficult to find sites under reference conditions for water body types whose members are mainly located in the central and lower part of the Biobío Basin.

Norrström

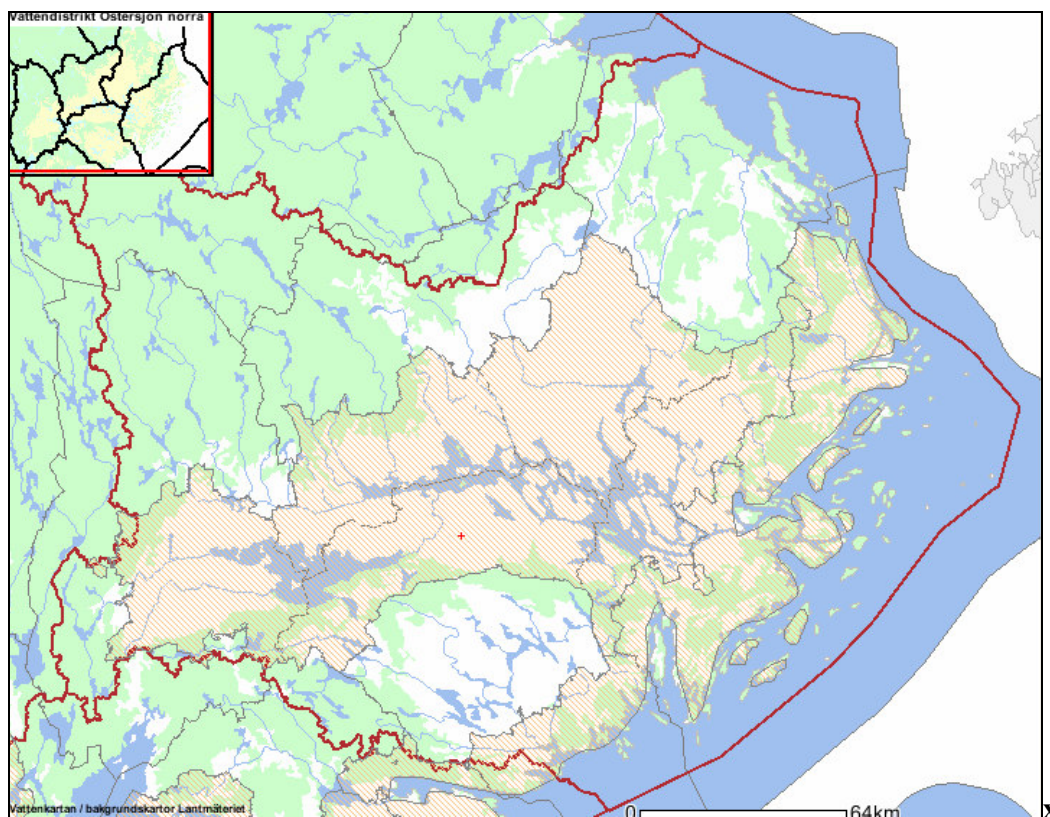
Map	Name	Page
NO1	Main river and lakes	14
NO2	Recreational waters	14
NO3	Nitrogen-sensitive areas in the North Baltic Water District	15
NO4	Natura 2000 areas	15
NO5	Nature reserves	16
NO6	Areas of national interest for outdoor life and nature protection	16



Map NO1 Main rivers and lakes



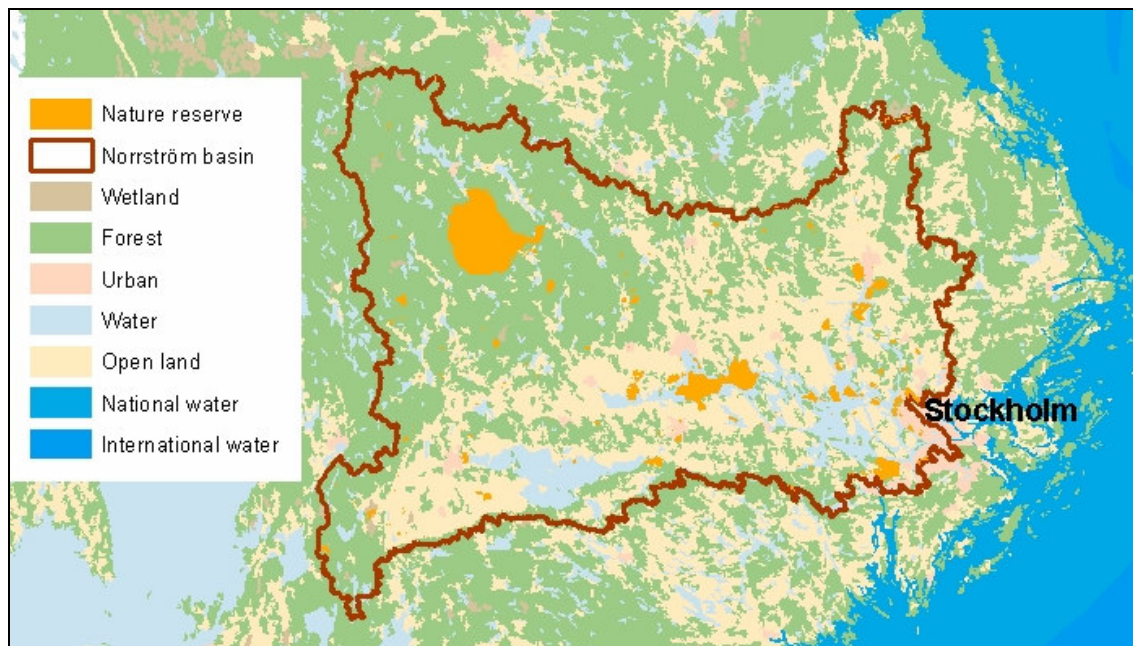
Map NO2 Recreational waters



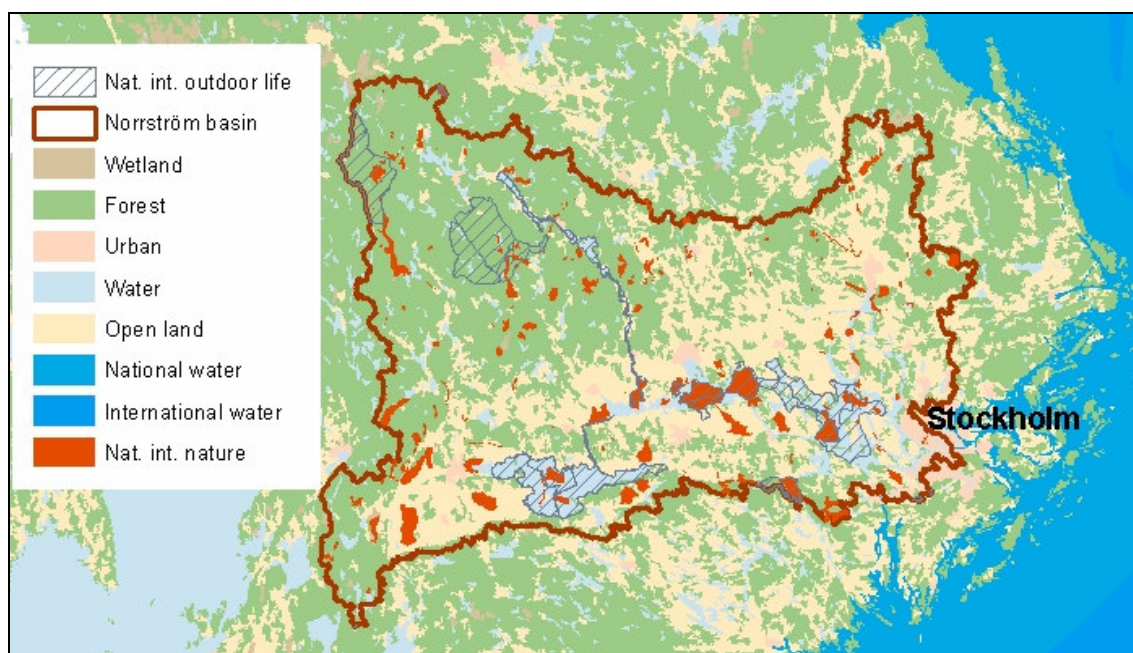
Map NO3 Nitrogen-sensitive areas in the North Baltic Water District



Map NO4 Natura 2000 sites



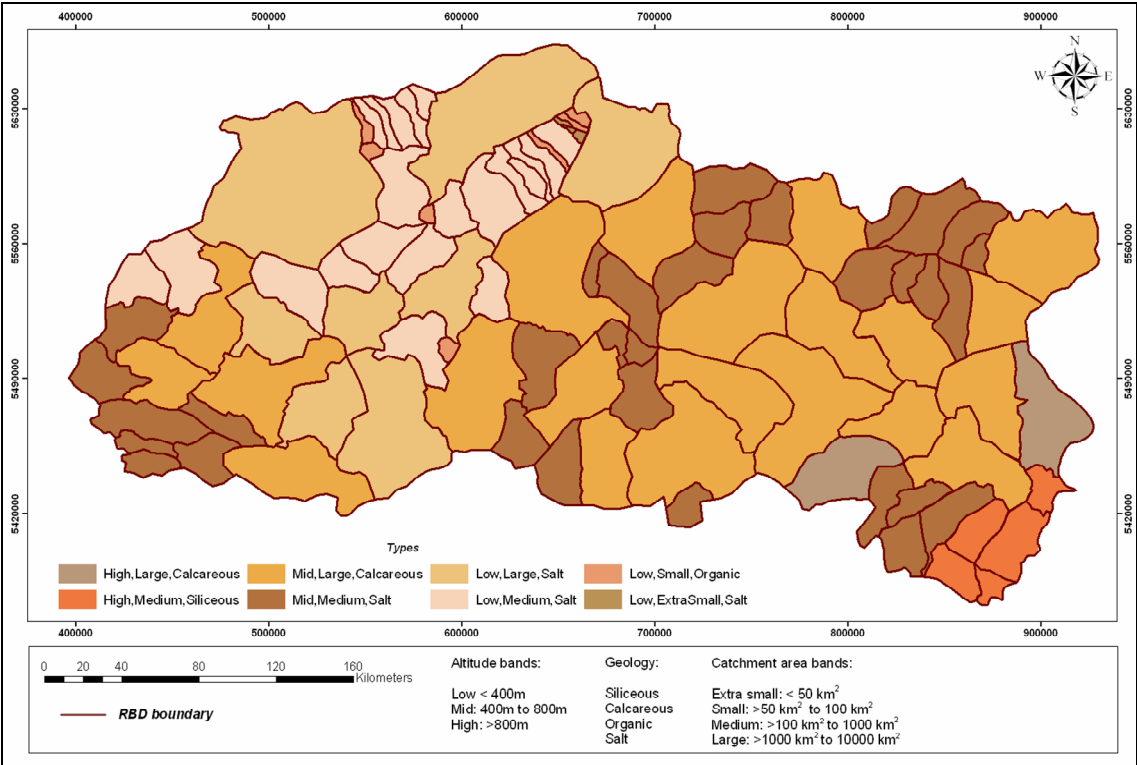
Map NO5 Nature reserves



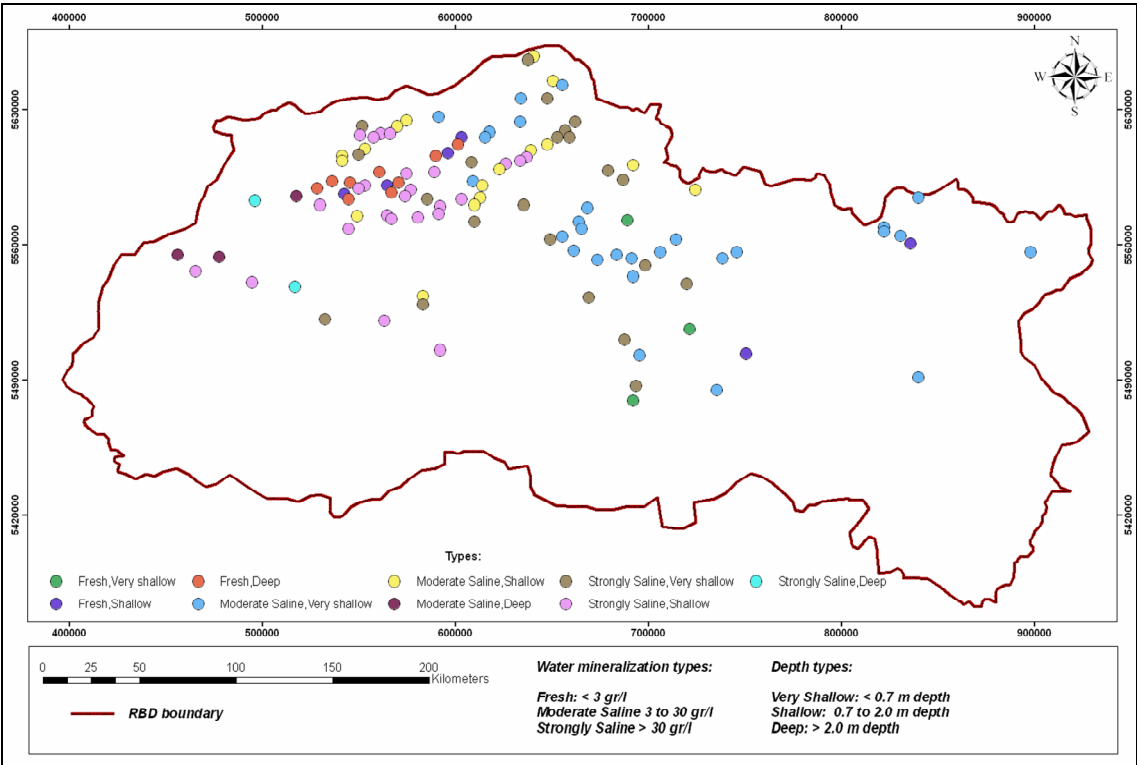
Map NO6 Areas of national interest for outdoor life and nature protection

Nura

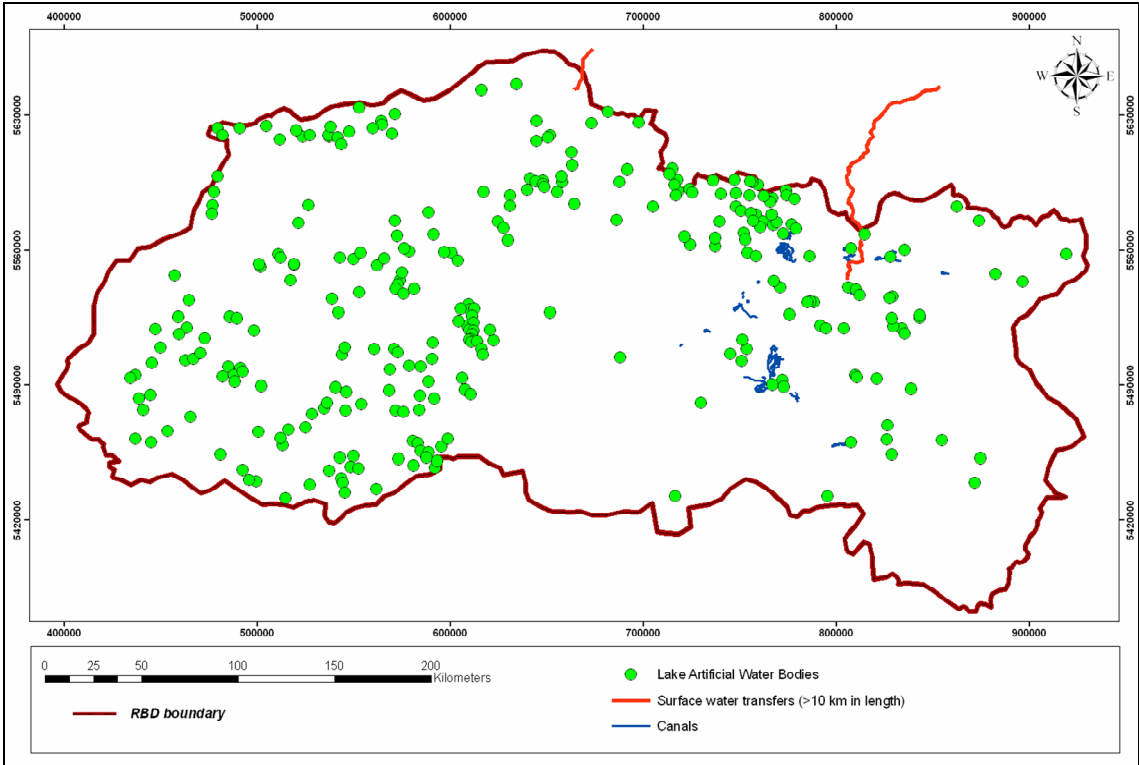
Map	Name	Page
NU1	Main river catchments and types	18
NU2	Lake types	18
NU3	Provisional artificial water bodies, canals and water transfers	19
NU4	Groundwater water body types	19
NU5	Groundwater dependent surface water bodies and terrestrial ecosystems	20
NU6	Waters used for the abstraction of drinking water	20
NU7	Areas designated to protect economically significant aquatic species	21
NU8	Recreational waters	21
NU9	Nutrient-sensitive areas	22
NU10	Water dependent conservation areas	22
NU11	Wetlands	23
NU12	Point source pressures	23
NU13	Groundwater water bodies at risk from diffuse source pollution pressures	24
NU14	Assessment of areas protecting economically significant aquatic species	24
NU15	Assessment of recreational waters	25
NU16	Assessment of water dependent conservation areas	25
NU17	Assessment of wetlands	26
NU18	Assessment of wetland source pollution	26



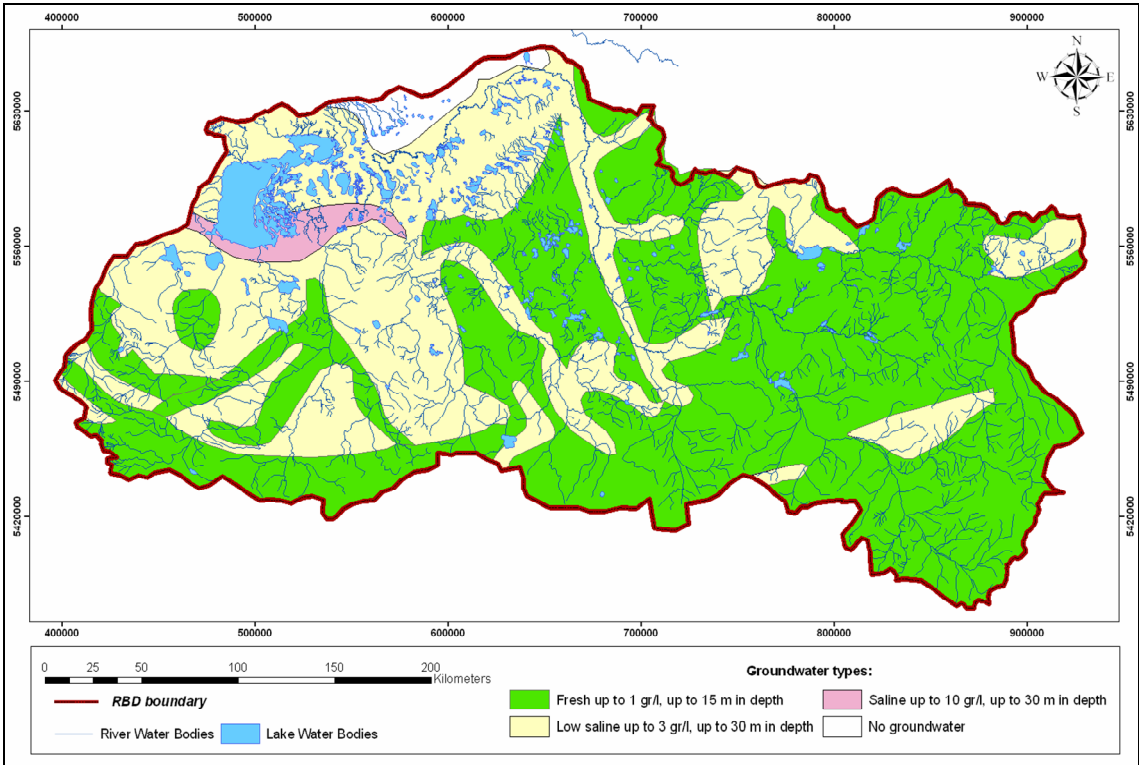
Map NU1 Main river catchments and types



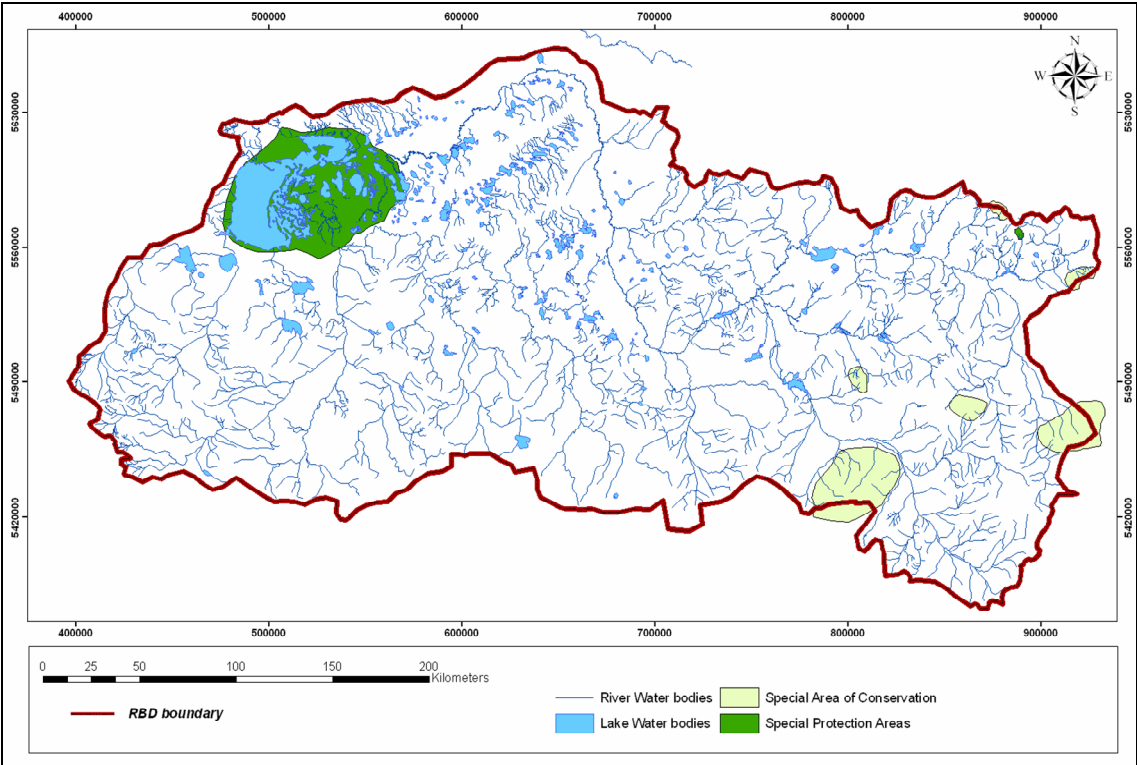
Map NU2 Lake types



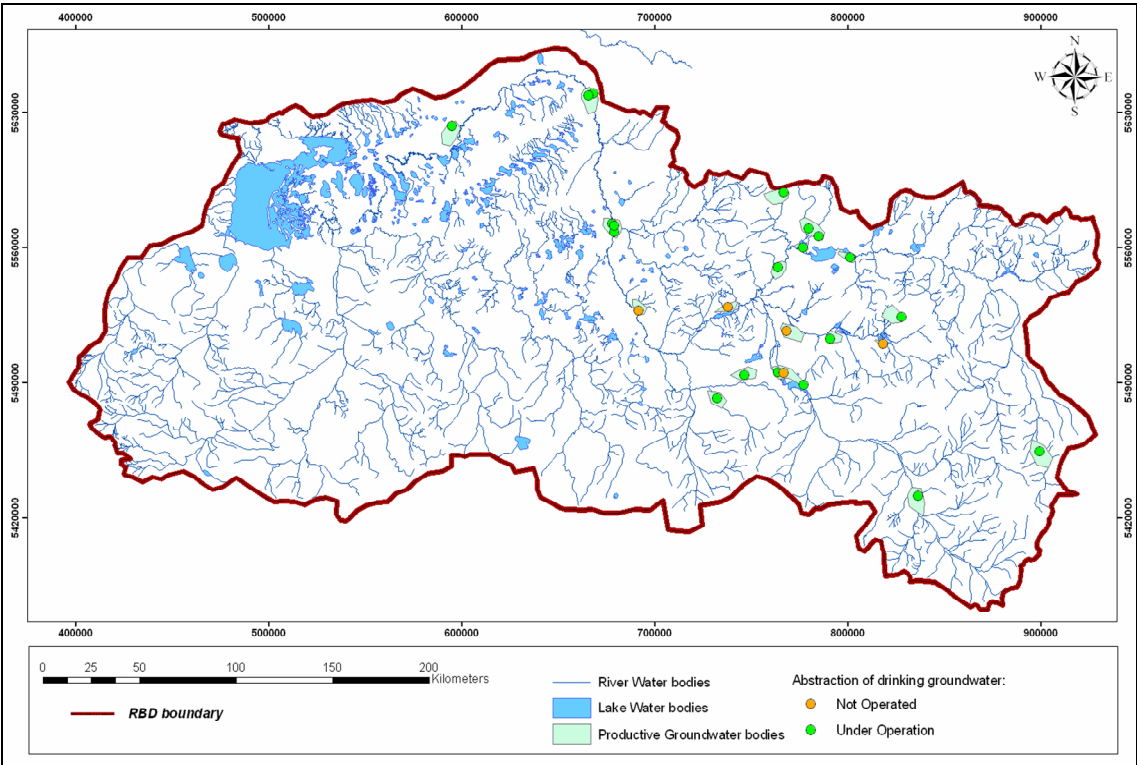
Map NU3 Provisional artificial water bodies, canals and water transfers



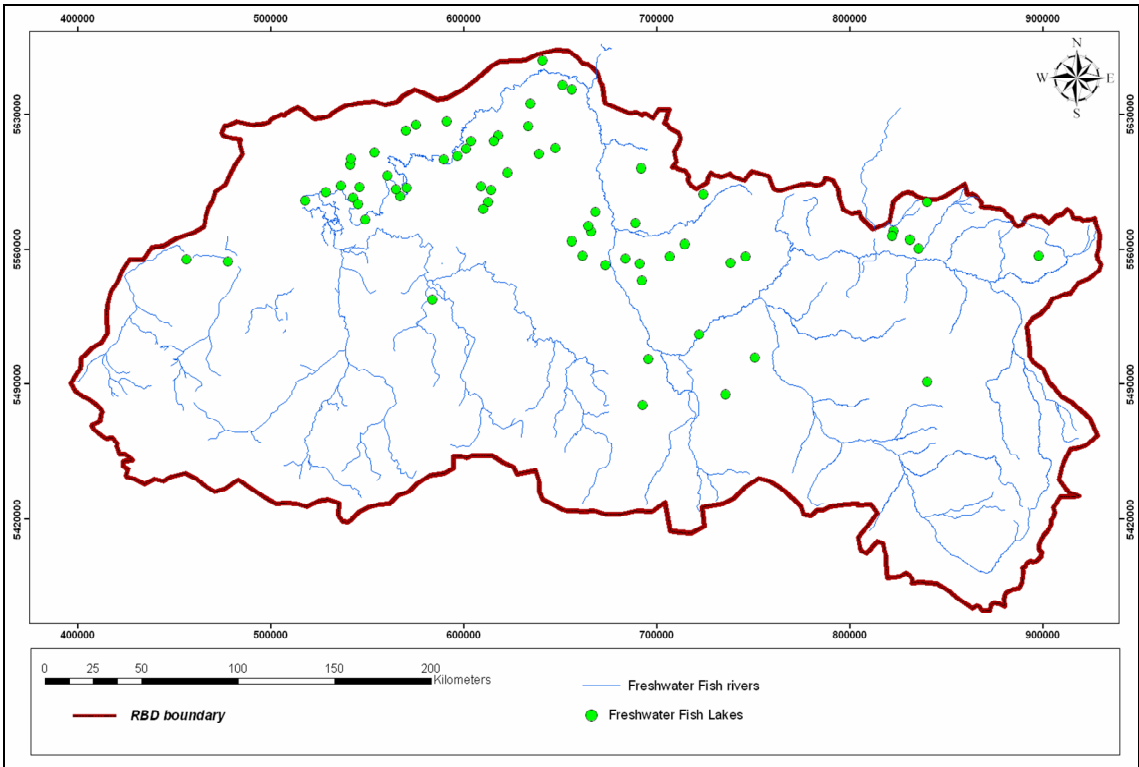
Map NU4 Groundwater water body types



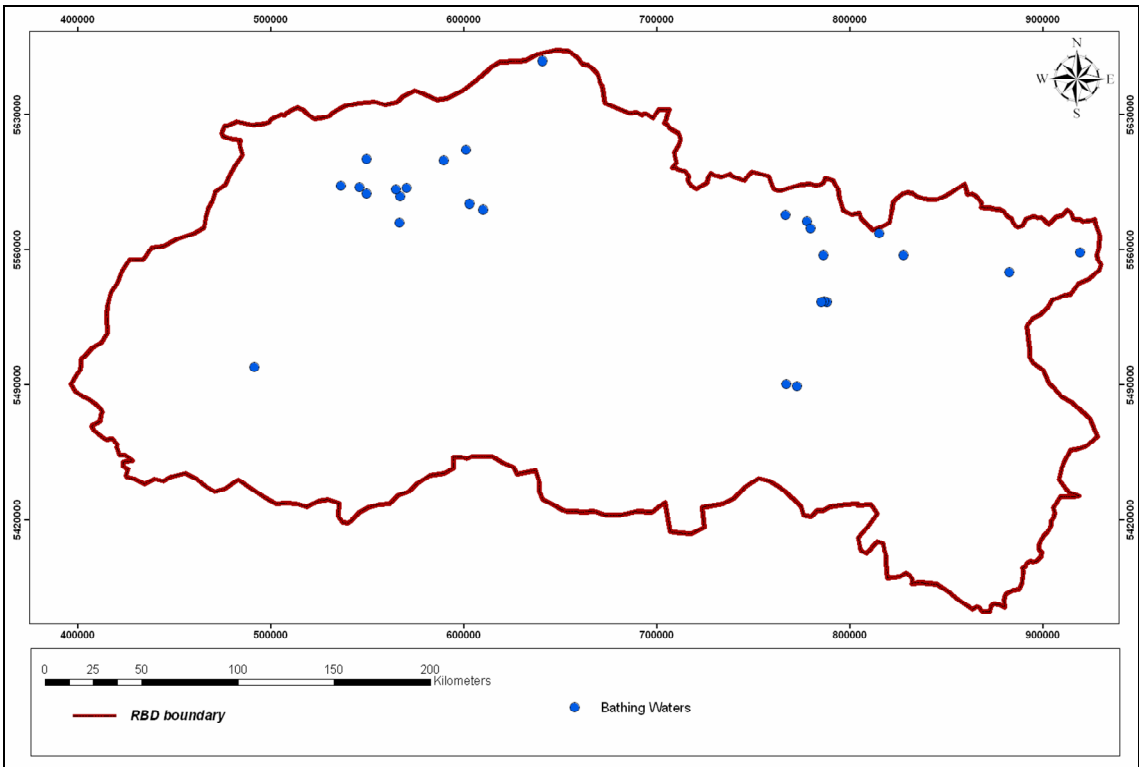
Map NU5 Groundwater dependent surface water bodies and terrestrial ecosystems



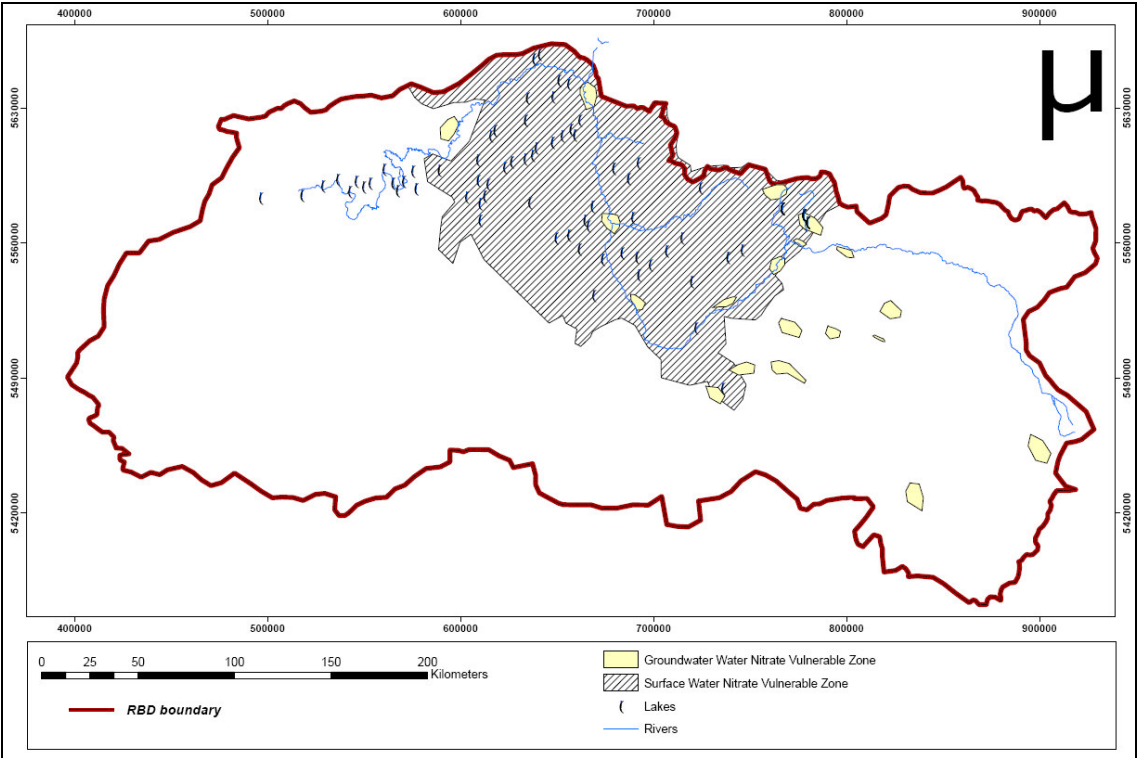
Map NU6 Waters used for the abstraction of drinking waters



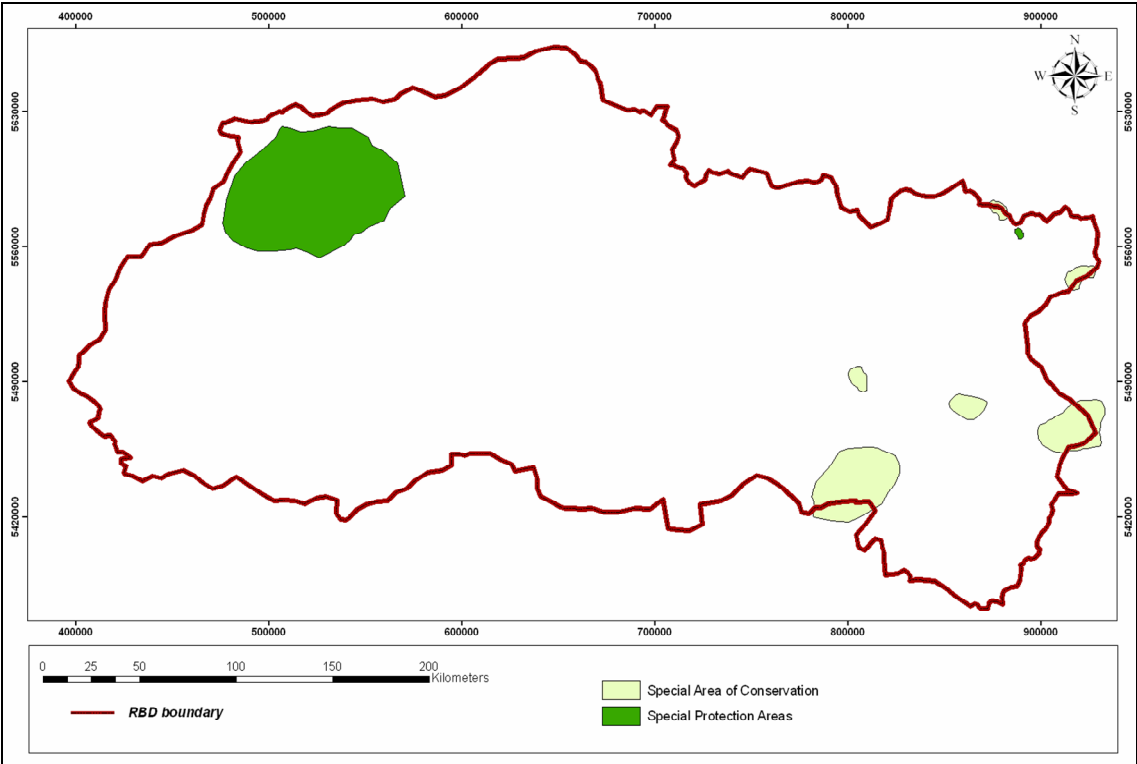
Map NU7 Areas designated to protect economically significant species



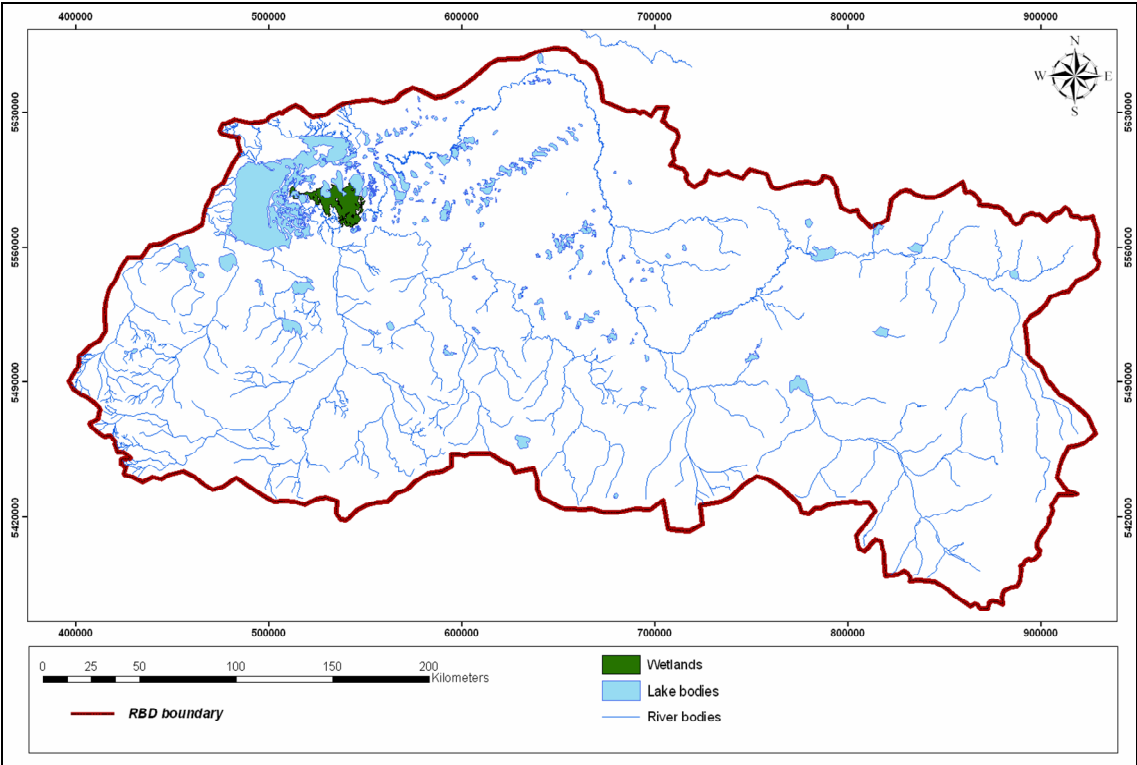
Map NU8 Recreational waters



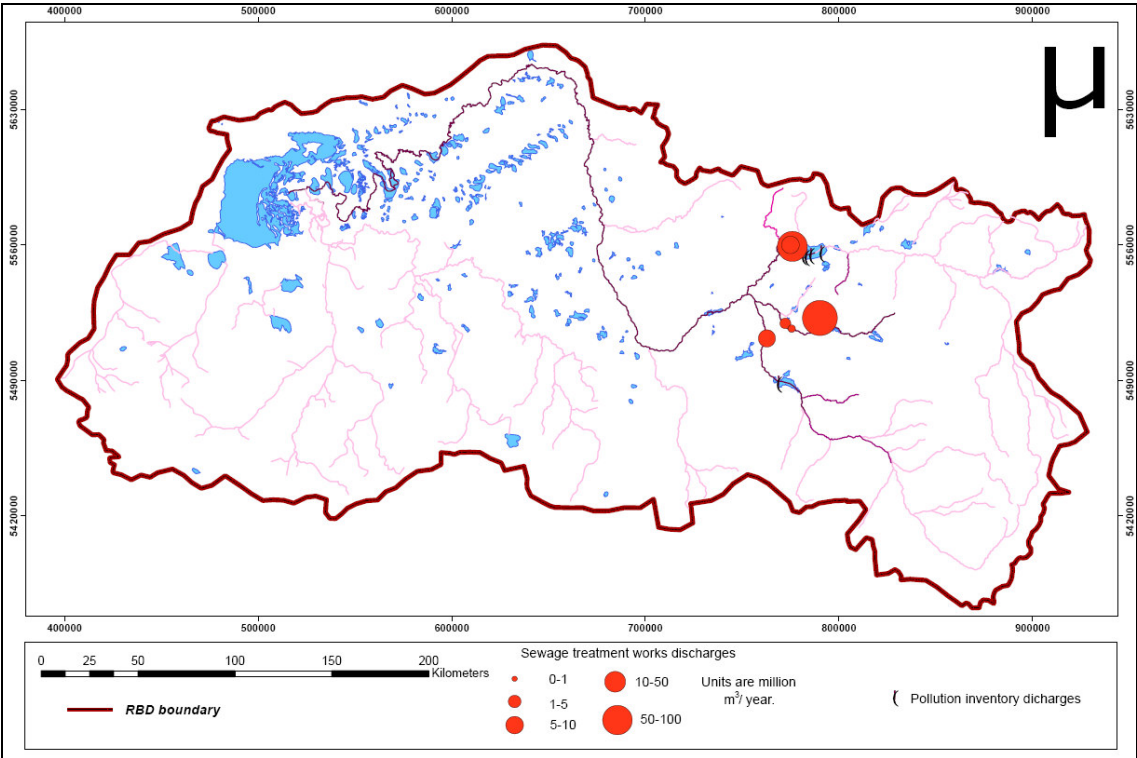
Map NU9 Nutrient-sensitive areas



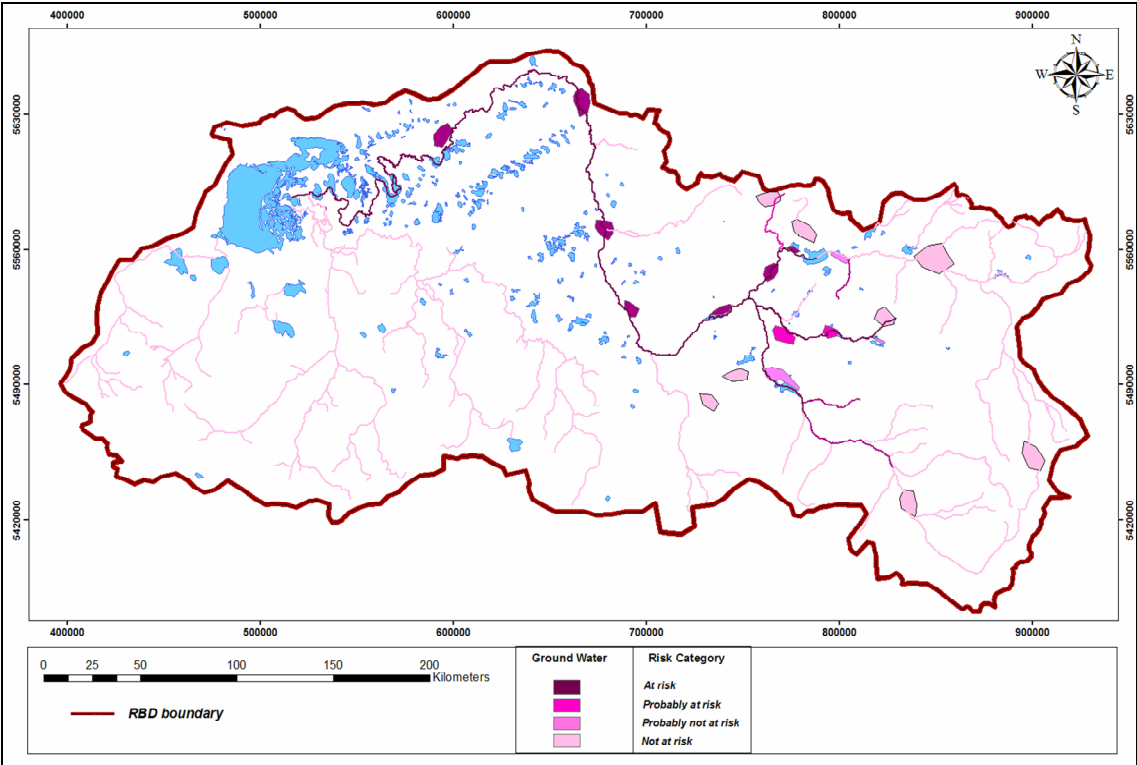
Map NU10 Water dependent conservation areas



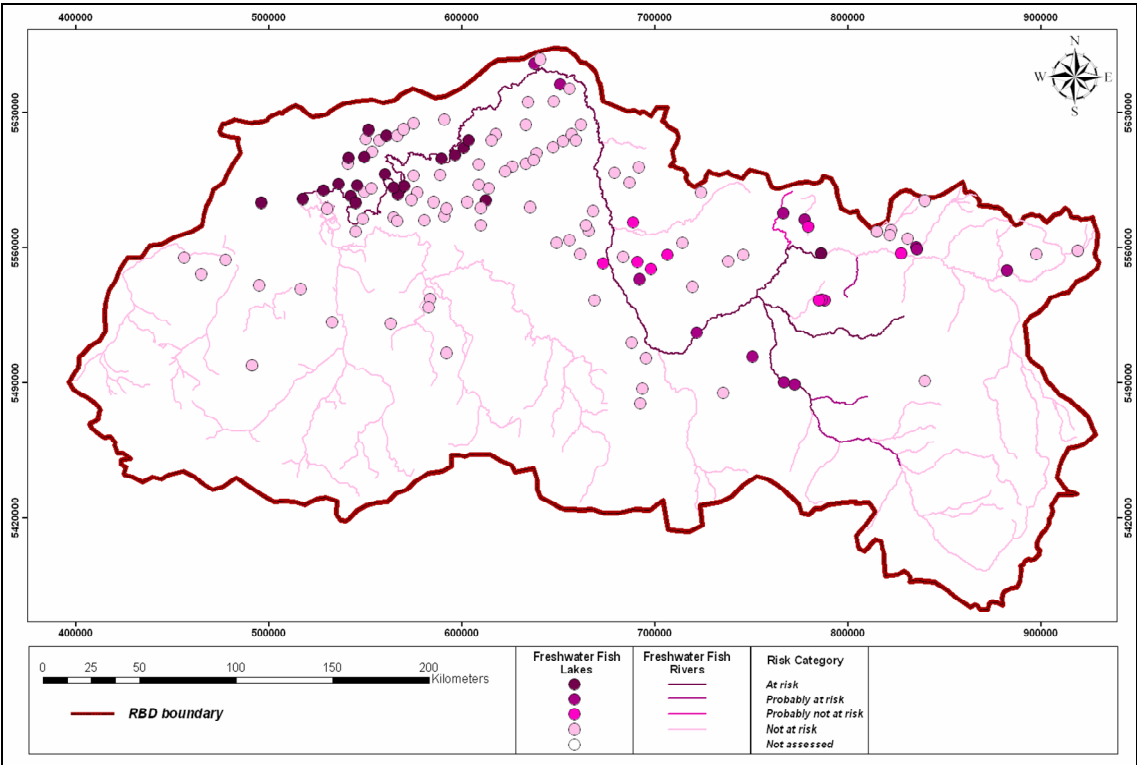
Map NU11 Wetlands



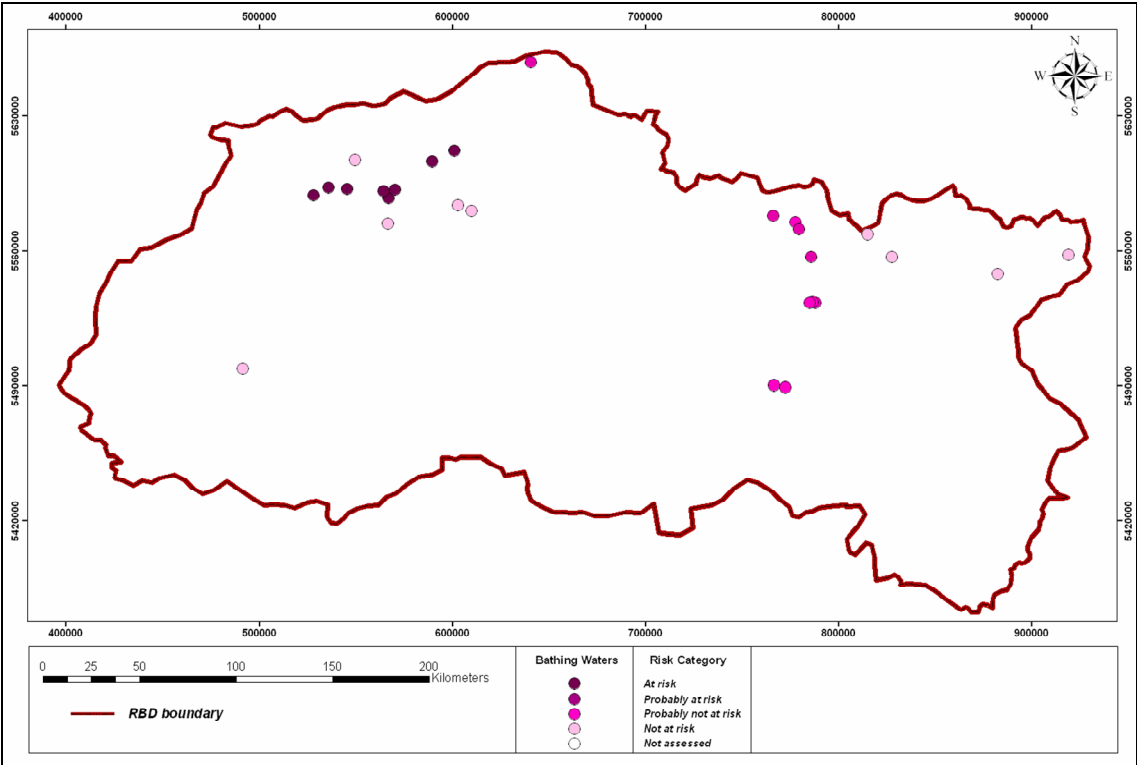
Map NU12 Point source pressures



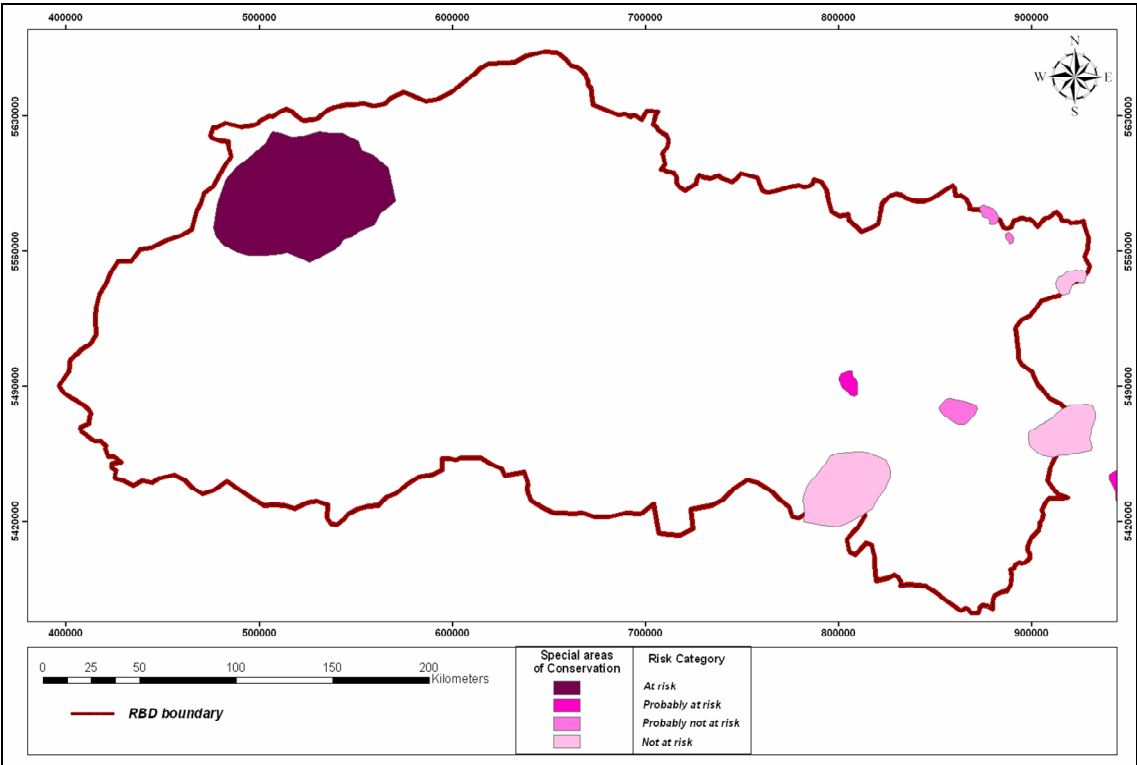
Map NU13 Groundwater water bodies at risk from diffuse source pollution pressures



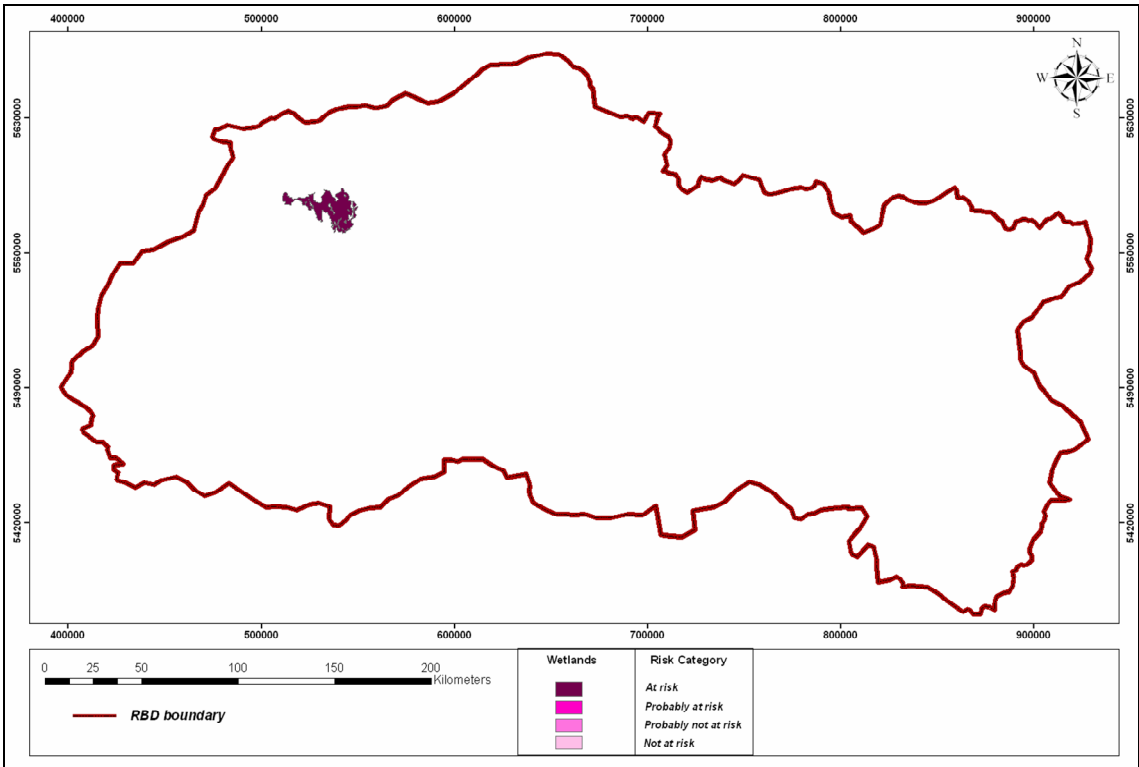
Map NU14 Assessment of areas protecting economically significant aquatic species



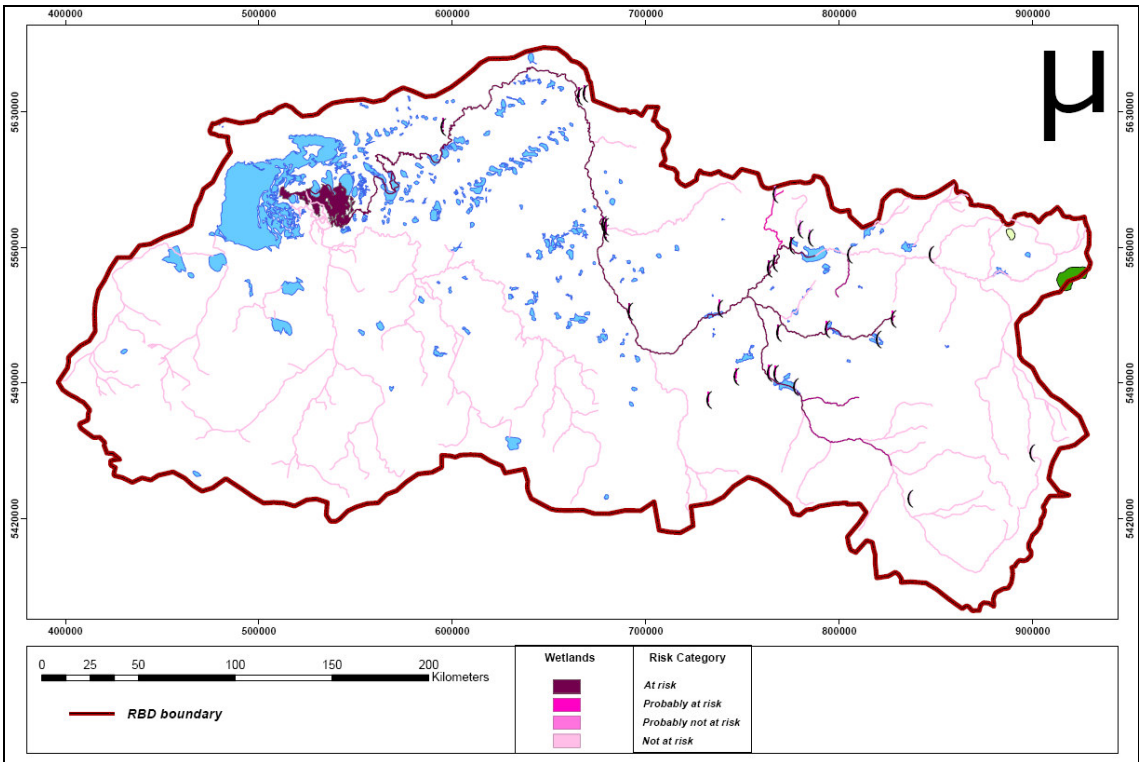
Map NU15 Assessment of recreational waters



Map NU16 Assessment of water dependent conservation areas



Map NU17 Assessment of wetlands



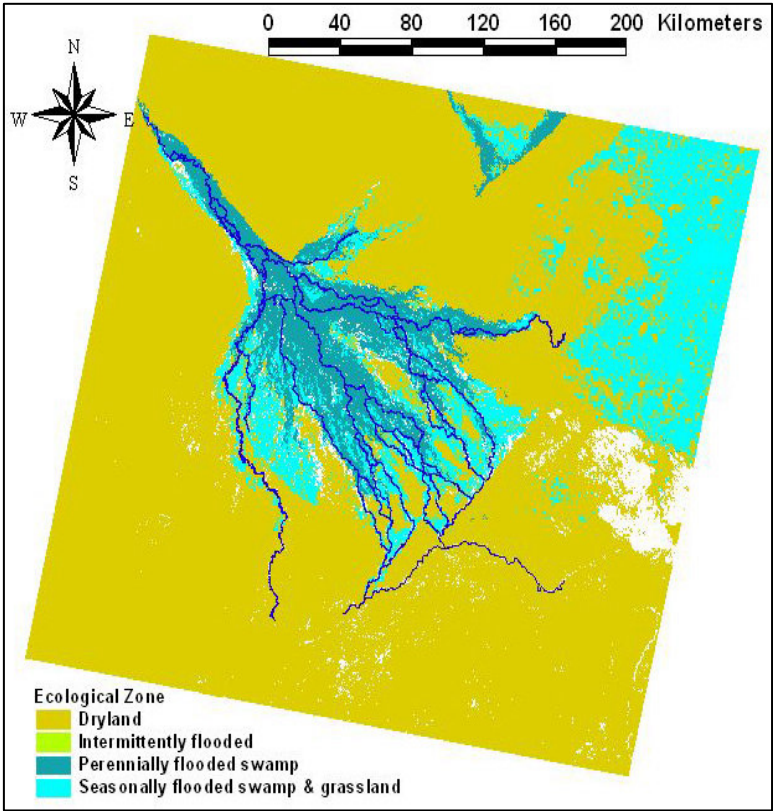
Map NU18 Assessment of wetland source pollution

Okavango

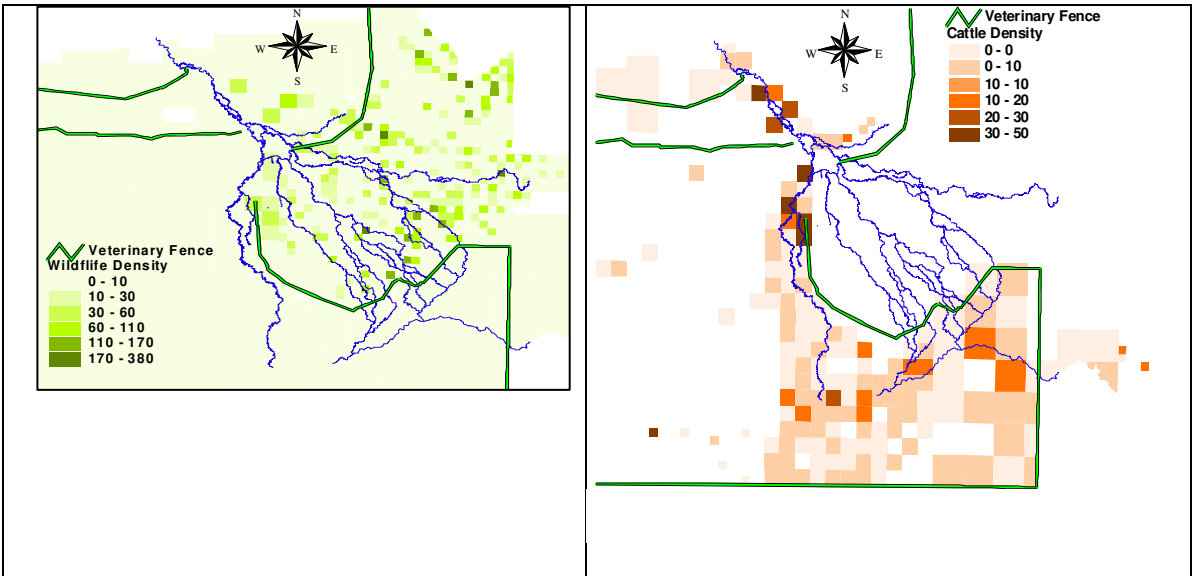
Map	Name	Page
OK1	Ecological zones of Okavango Delta	28
OK2	Distribution of (a) wildlife and (b) cattle, in the Okavango Delta	28
OK3	Locations of tourist camps and lodges in the delta	29
OK4	Main river catchments from 1 km DEM with 50 km ² threshold	29
OK5	Main river types (from Mendelsohn and el Obeid, 2004)	30
OK6	Okavango Delta areas	30
OK7	Okavango Delta flood zones	31
OK8	Okavango Delta soil types	31
OK9	Okavango Delta vegetation types	32
OK10	Combined vegetation and surface water classification	32
OK11	Impact of upstream irrigation on surface water	33
OK12	Impact of channel clearance on surface water	33

References

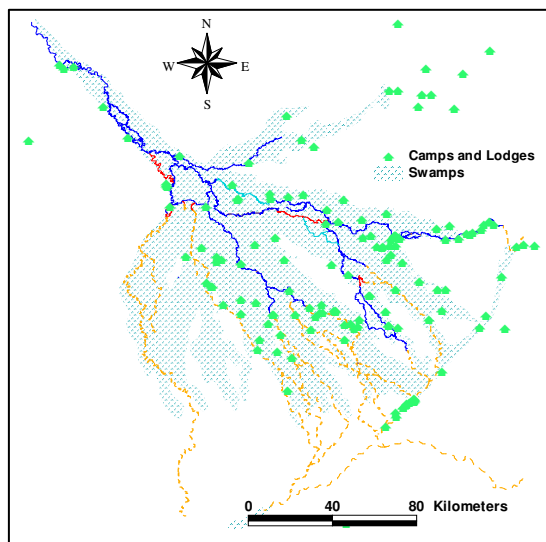
Mendelsohn, J. and el Obeid, S. 2004. Okavango River: The flow of a lifeline. Struik Publishers, South Africa.



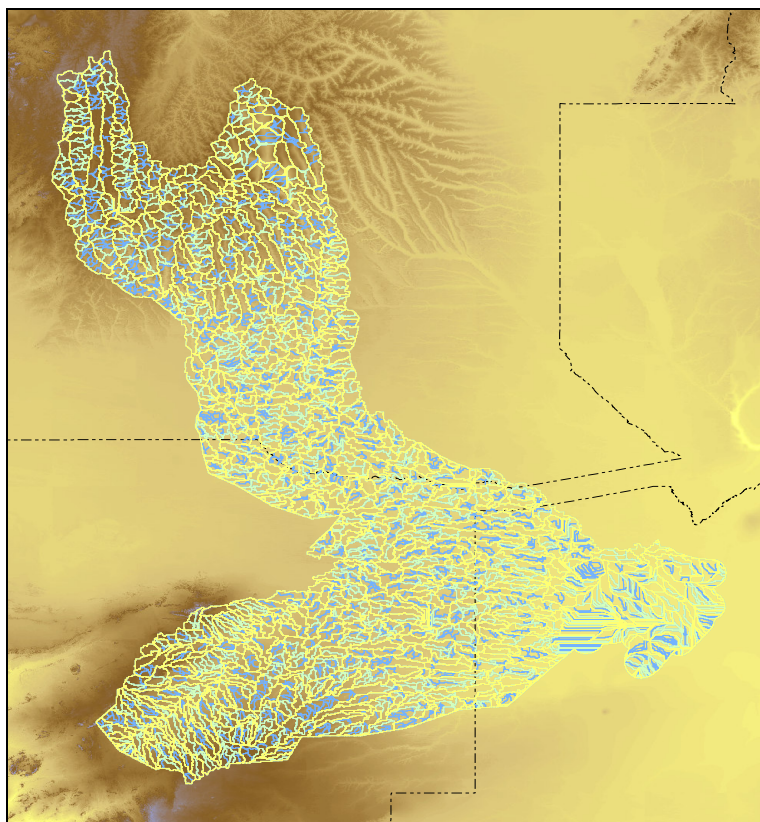
Map OK1 Ecological zones of Okavango Delta



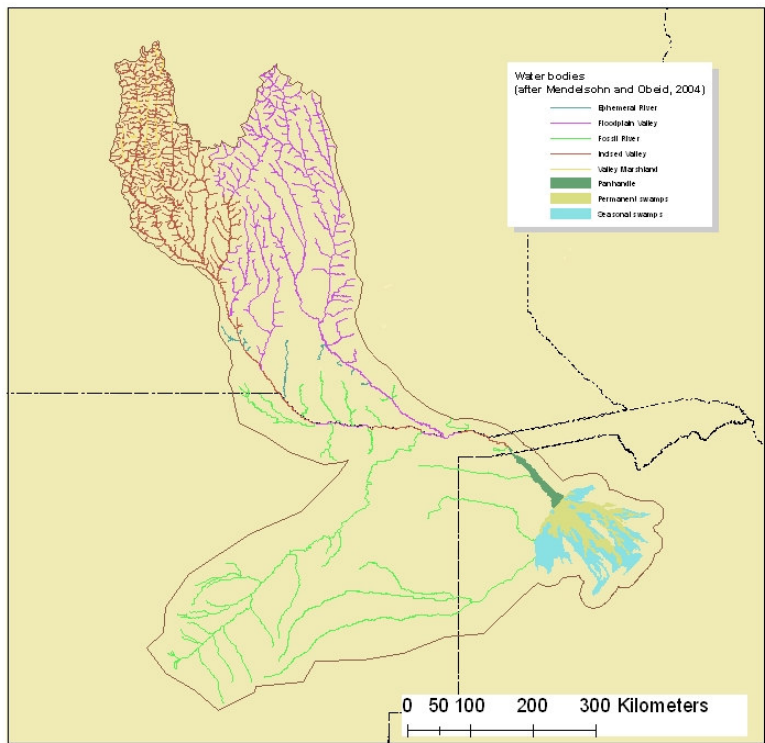
Map OK2 Distribution of (a) wildlife and (b) cattle, in the Okavango Delta



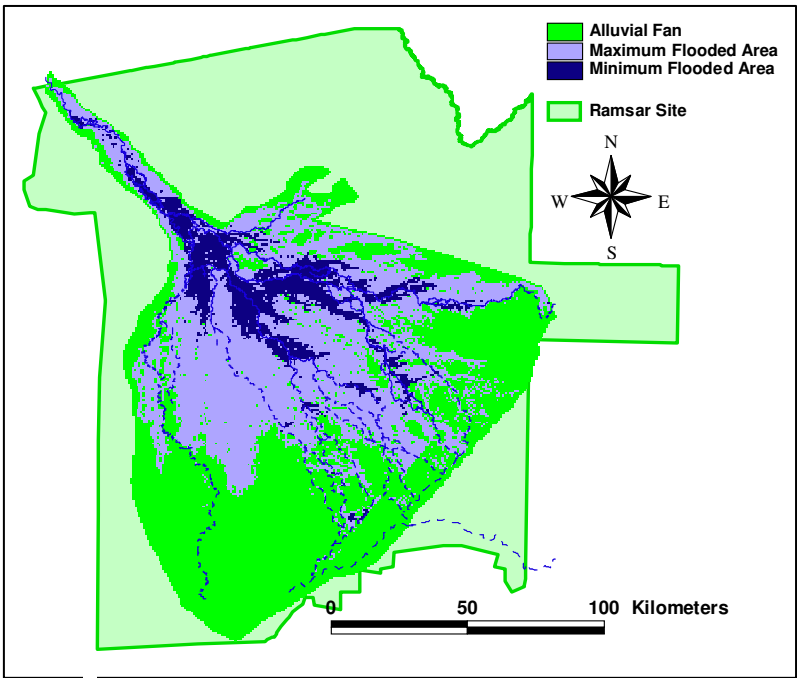
Map OK3 Locations of tourist camps and lodges in the delta



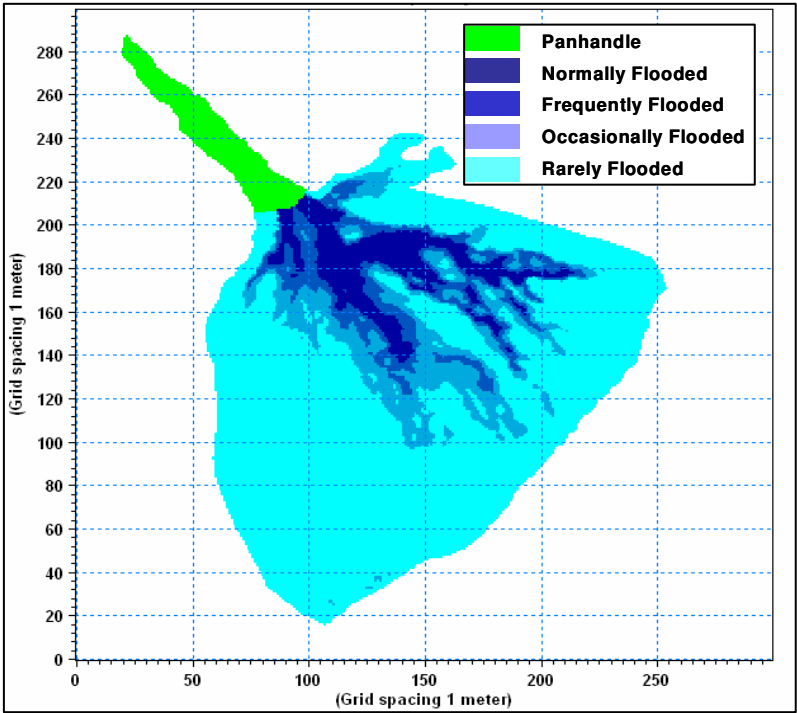
Map OK4 Main river catchments from 1 km DEM with 50 km² threshold



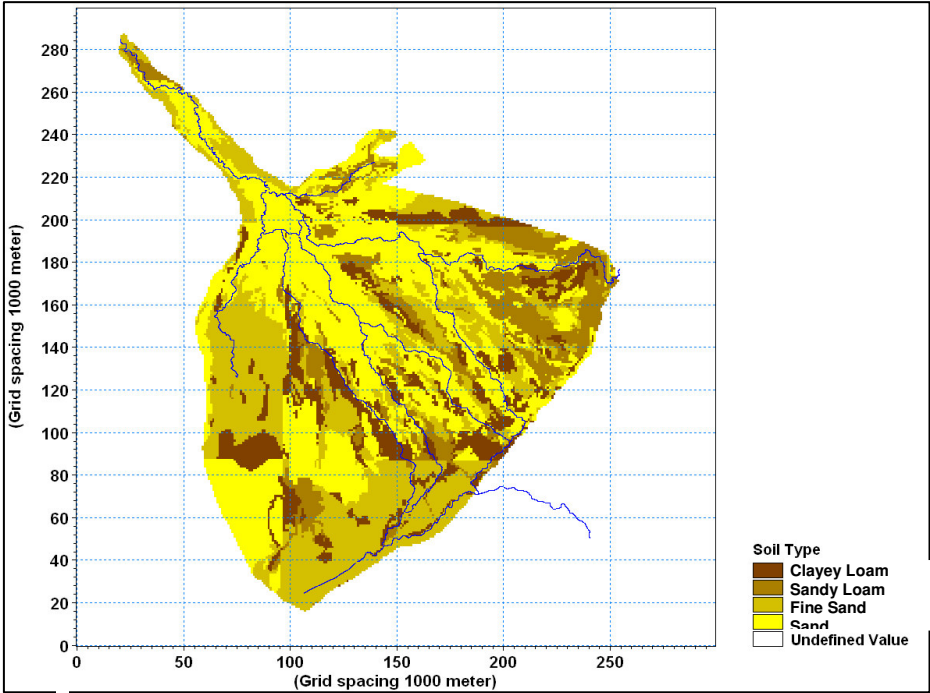
Map OK5 Main river types (from Mendelsohn and el Obeid, 2004)



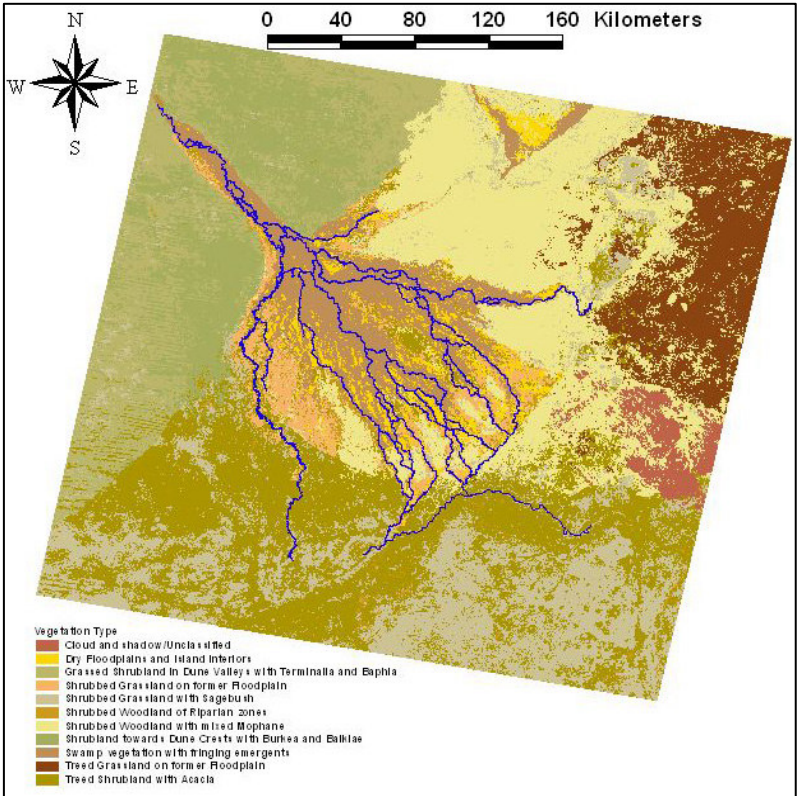
Map OK6 Okavango Delta areas



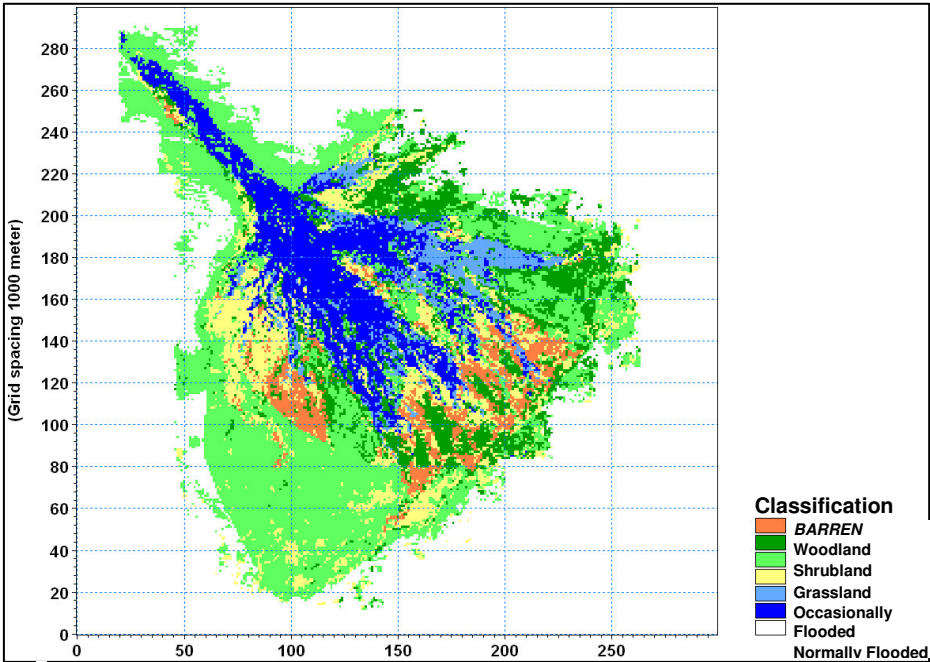
Map OK7 Okavango Delta flood zones



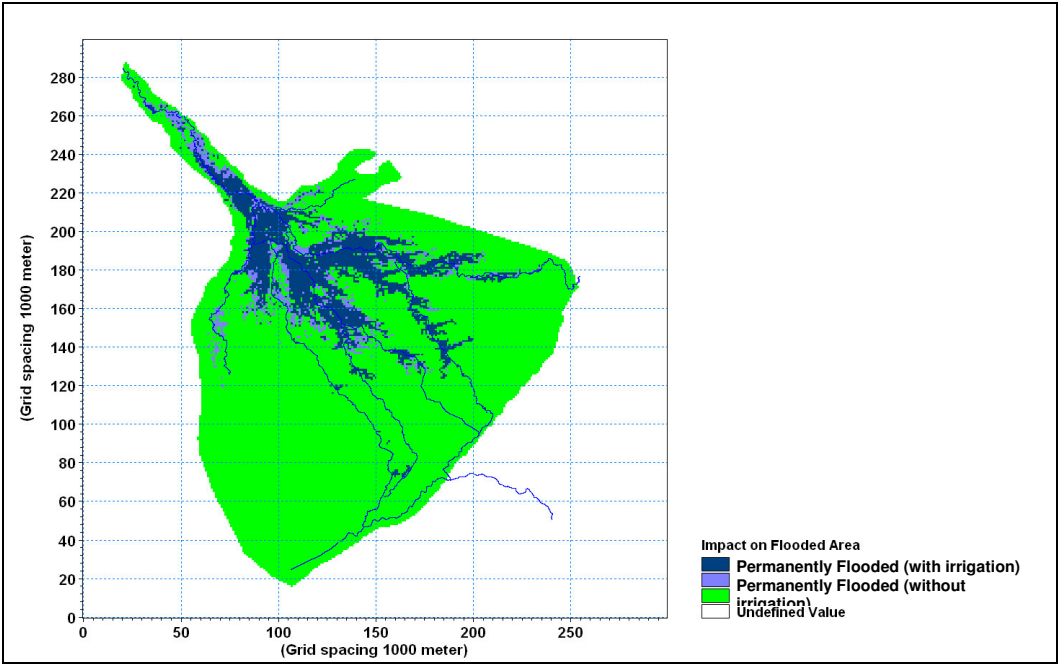
Map OK8 Okavango Delta soil types



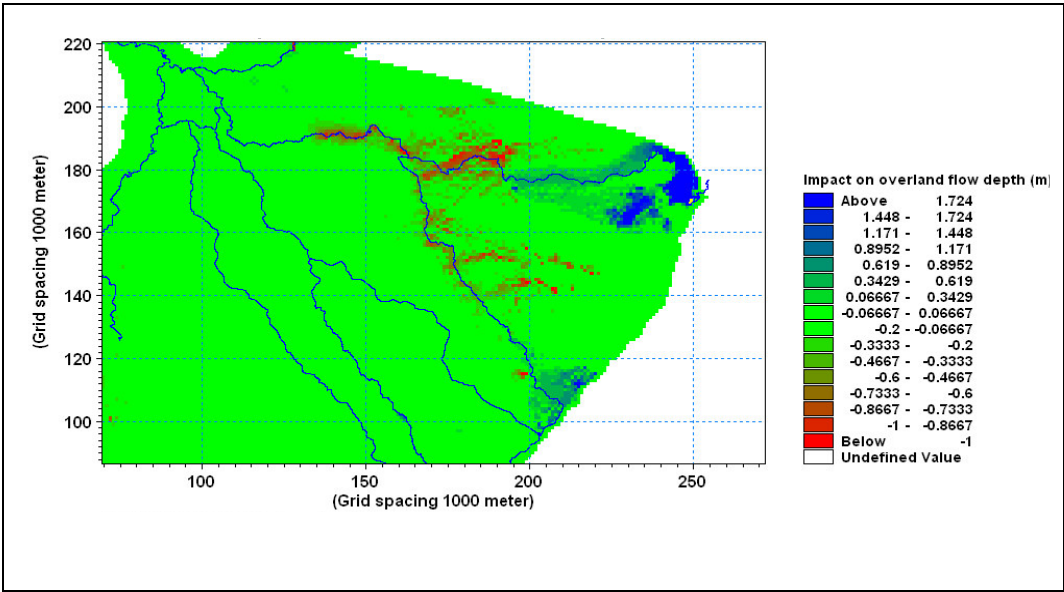
Map OK9 Okavango Delta vegetation types



Map OK10 Combined vegetation and surface water classification



Map OK11 Impact of upstream irrigation on surface water



Map OK12 Impact of channel clearance on surface water

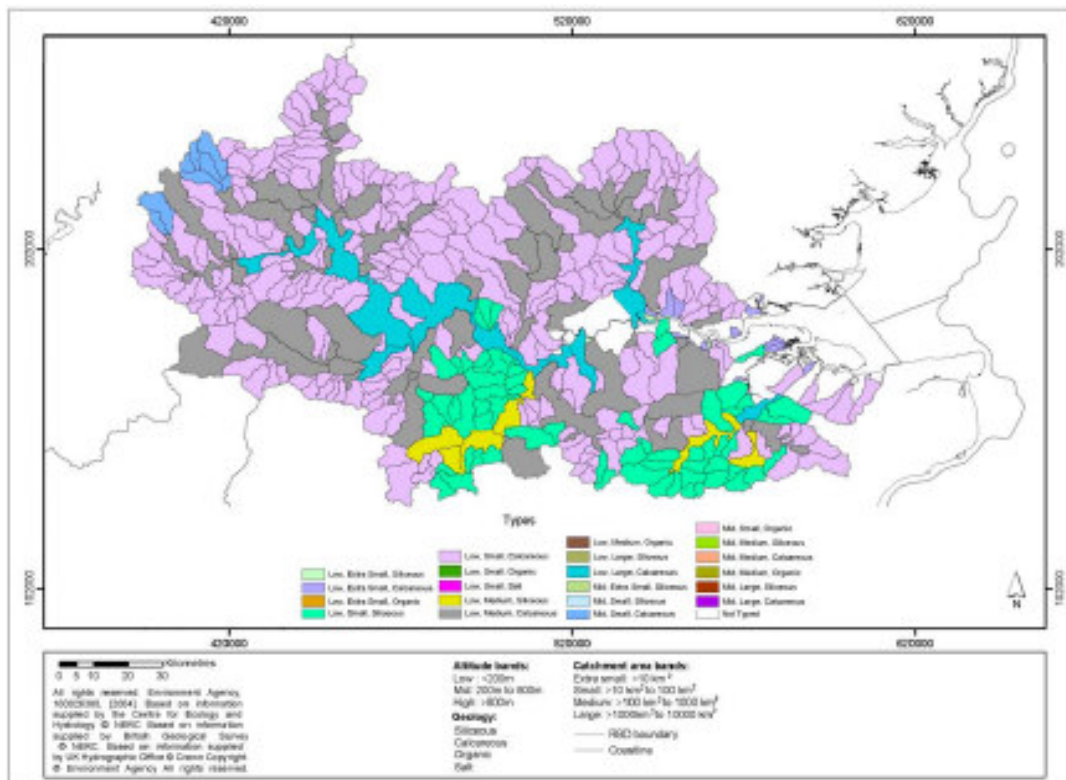
Thames

Map*	Name	Page
TH1	Main river catchments and types	36
TH2	Lake types	36
TH3	Provisional artificial water bodies, canals and water transfers	37
TH4	Groundwater water body types	37
TH5	Waters used for the abstraction of drinking water	38
TH6	Nutrient-sensitive areas	38
TH7	Water dependent conservation areas	39
TH8	Point source pressures	39
TH9	Abstraction and flow regulation pressures	40
TH10	General Quality Assessment biology assessment	40
TH11	Surface water bodies at risk from diffuse source pollution pressures	41
TH12	Groundwater water bodies at risk from diffuse source pollution pressures	41
TH13	Surface water bodies at risk from all pressure categories	42
TH14	Groundwater water bodies at risk from all pressure categories	42

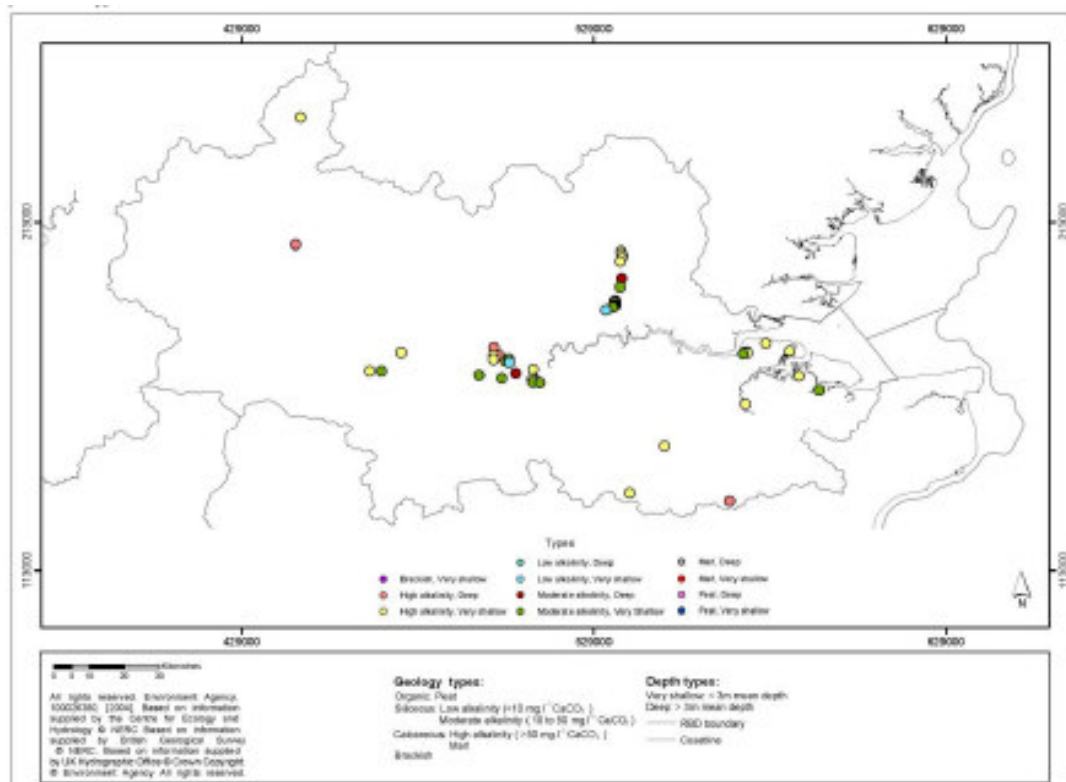
* All maps reproduced from Defra (2005b) with written permission of the Environment Agency for England and Wales

References

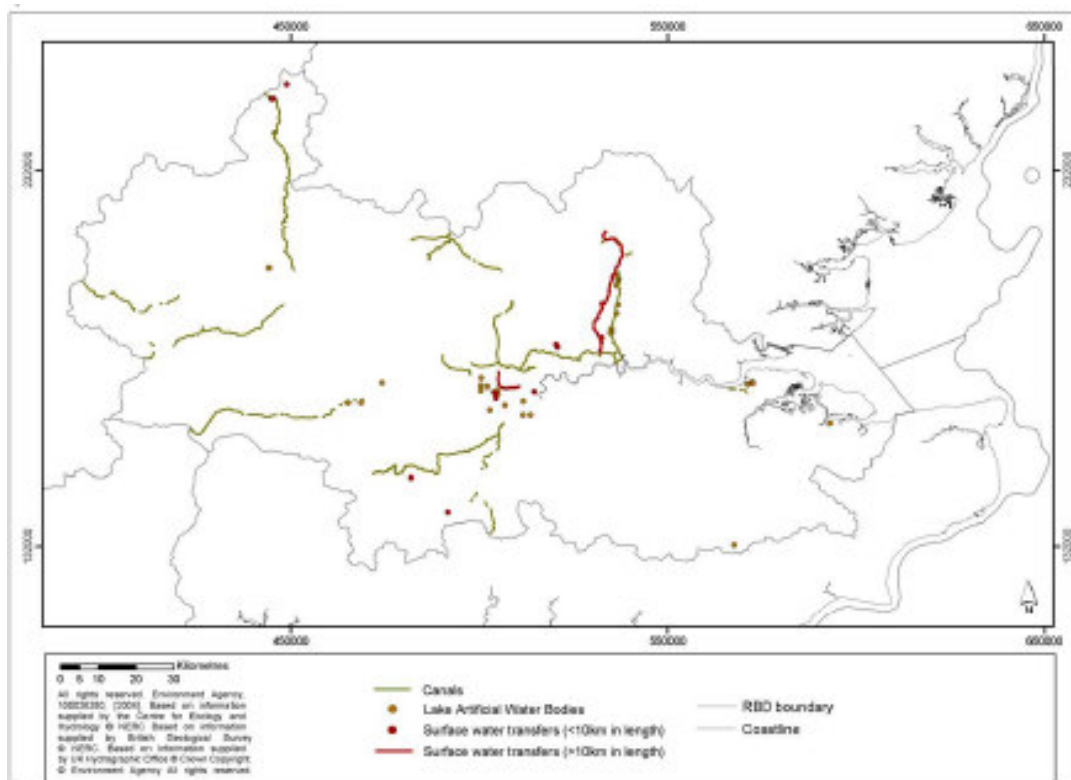
Department for Environment, Food and Rural Affairs (Defra). 2005b. *Maps to support the Summary report of the characterisation, impacts and economic analyses required by Article 5: Thames River Basin District*. Crown copyright 2005.
<http://www.Defra.gov.uk/environment/water/wfd/pdf/thamestext.pdf>



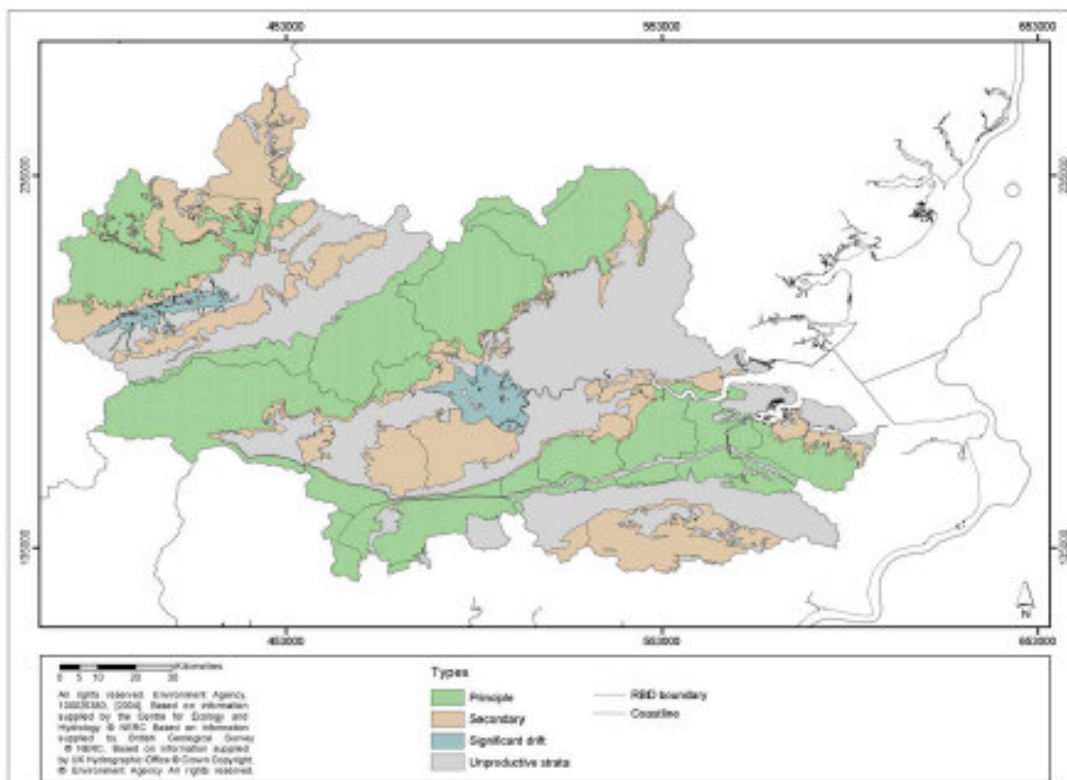
Map TH1 Main river catchments and types (Defra, 2005b)



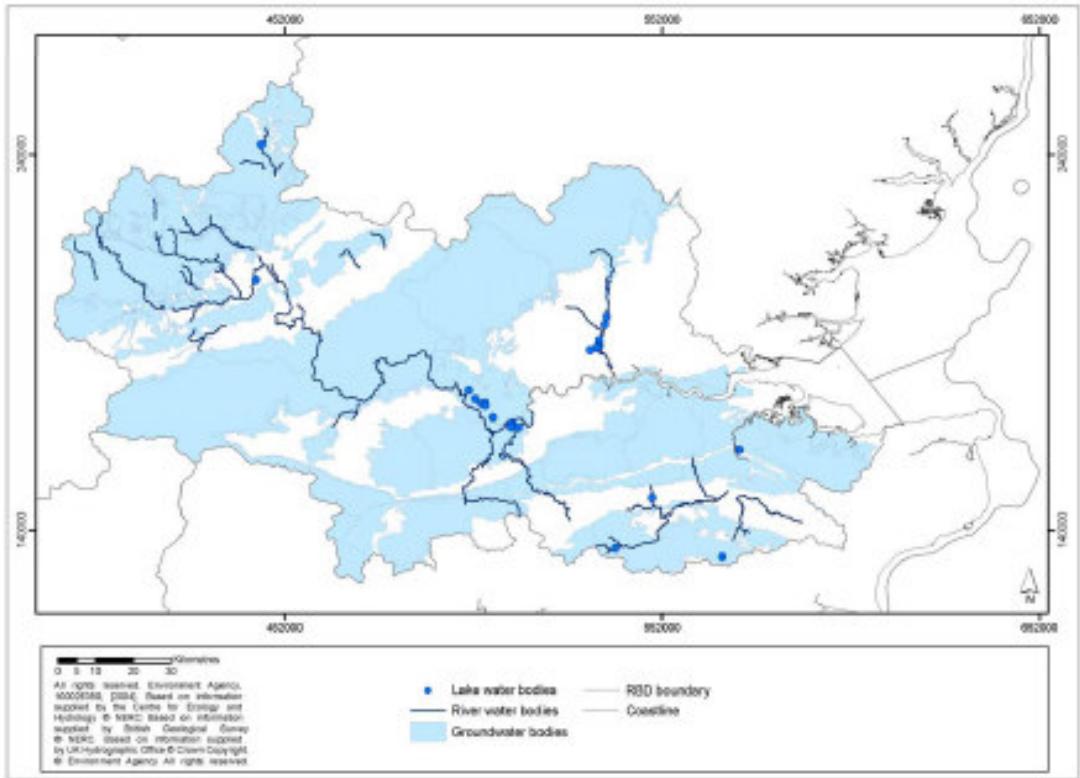
Map TH2 Lake types (Defra, 2005b)



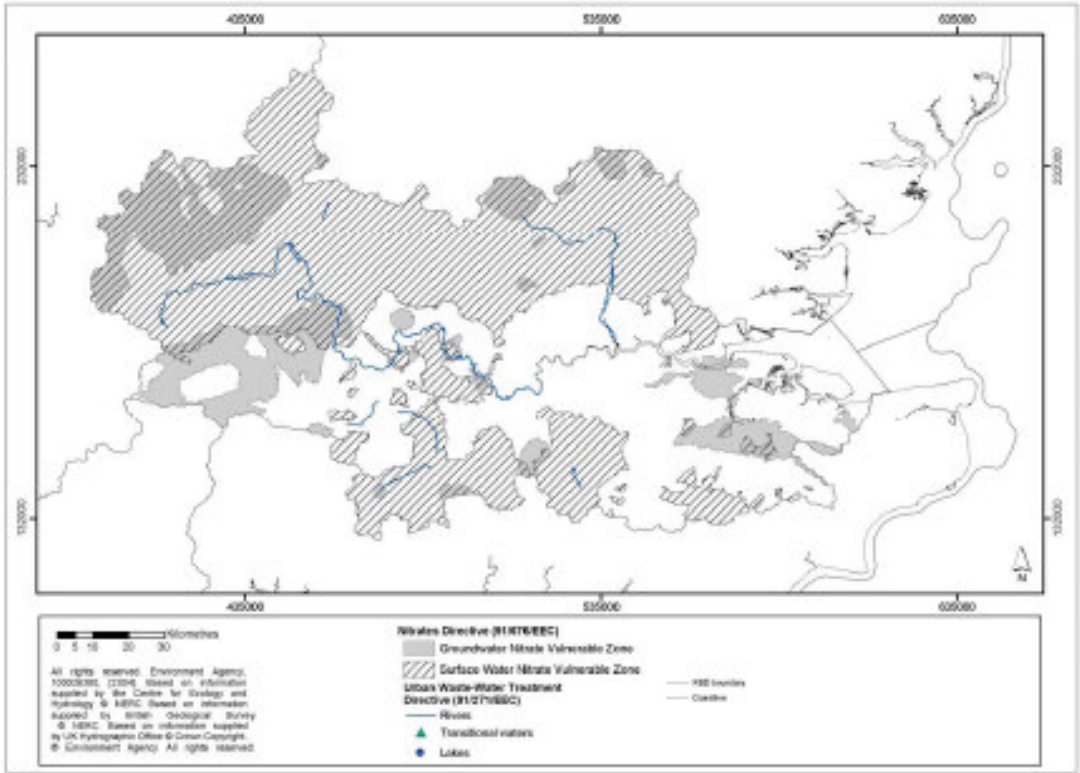
Map TH3 Provisional artificial water bodies, canals and water transfers (Defra, 2005b)



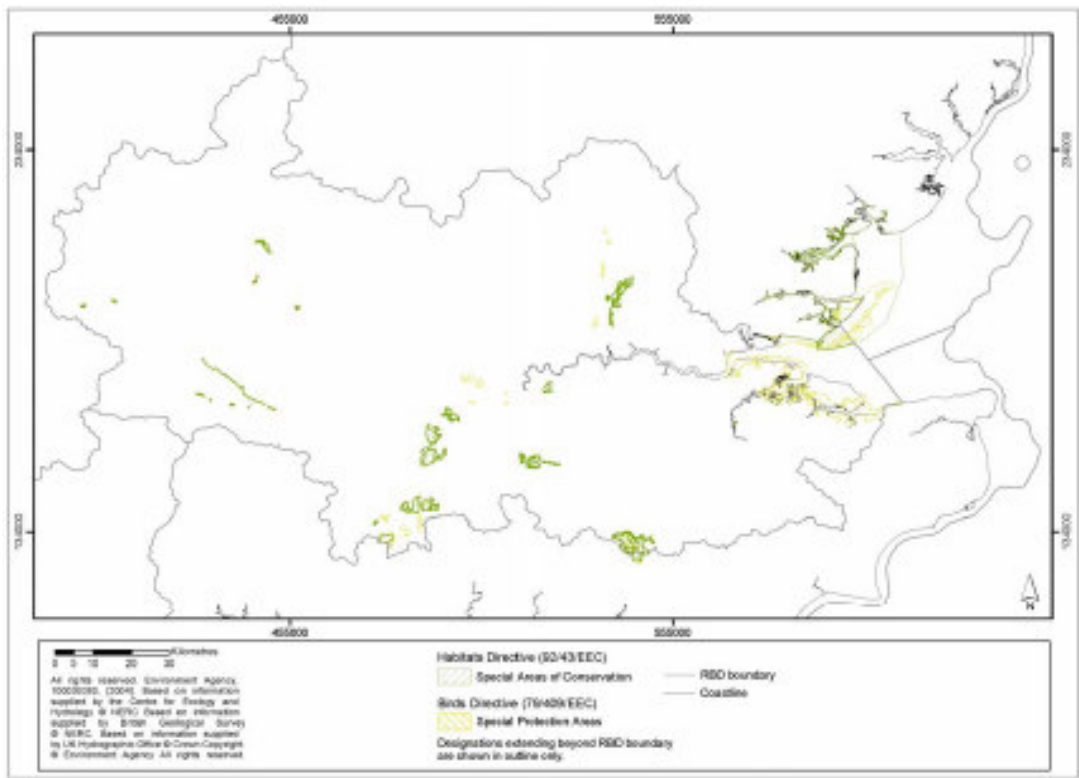
Map TH4 Groundwater water body types (Defra, 2005b)



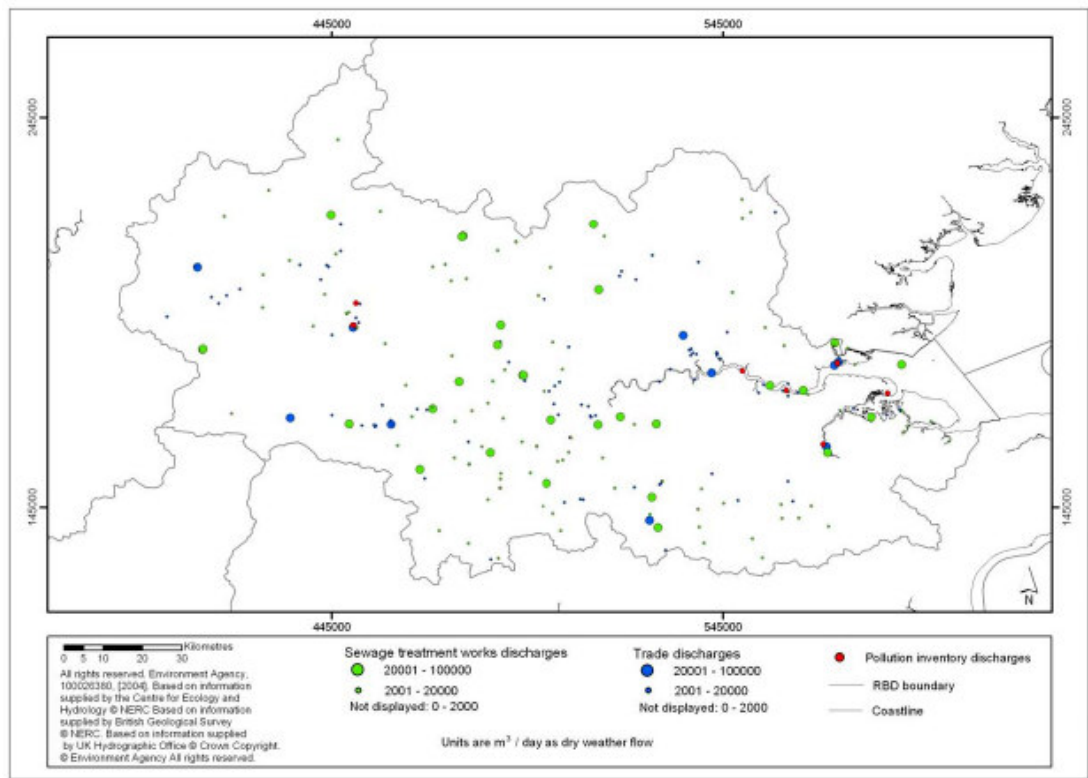
Map TH5 Waters used for the abstraction of drinking water (Defra, 2005b)



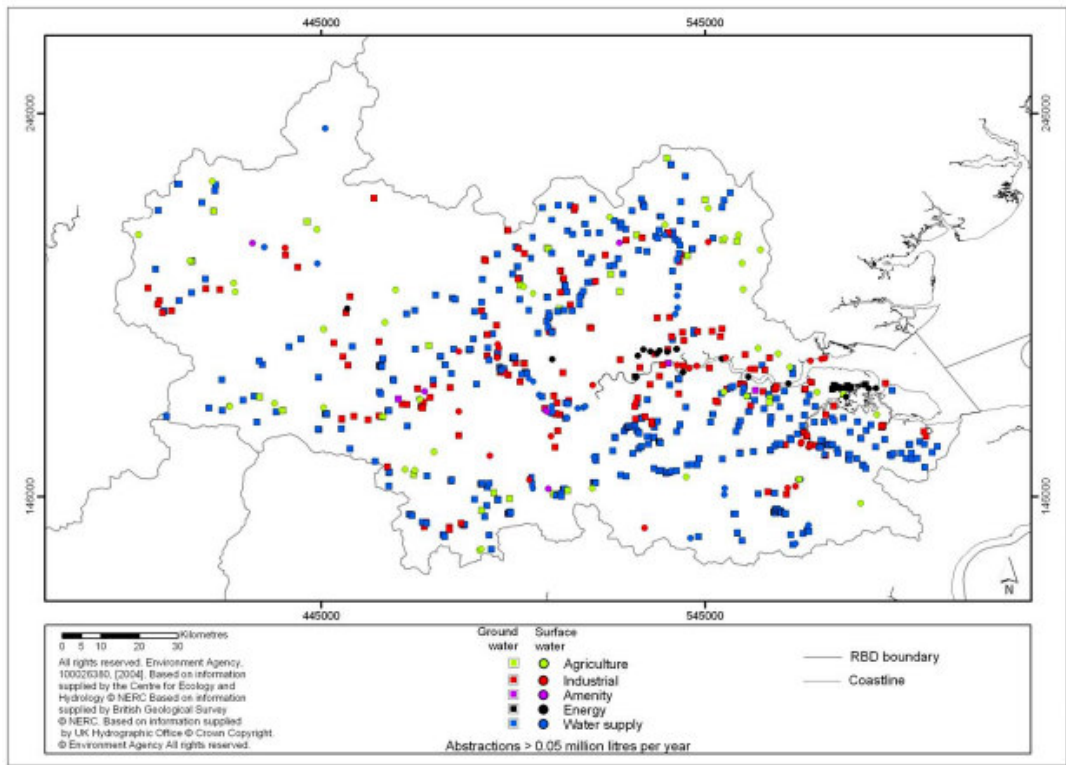
Map TH6 Nutrient-sensitive areas (Defra, 2005b)



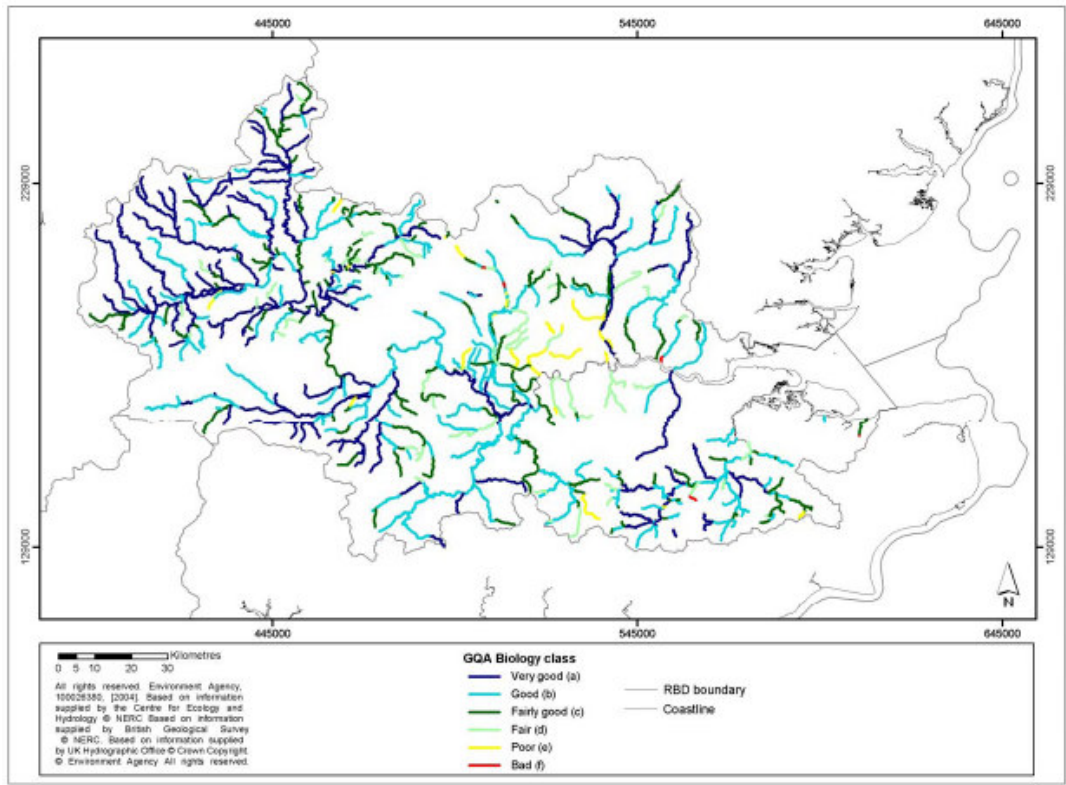
Map TH7 Water dependent conservation areas (Defra, 2005b)



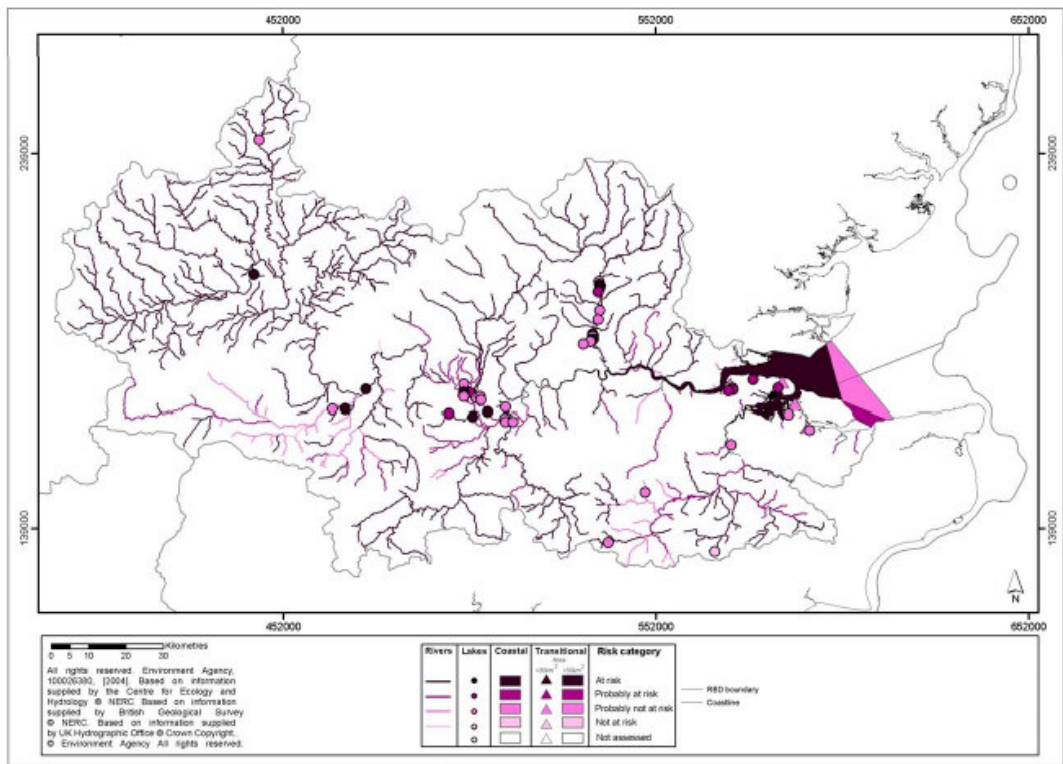
Map TH8 Point source pressures (Defra, 2005b)



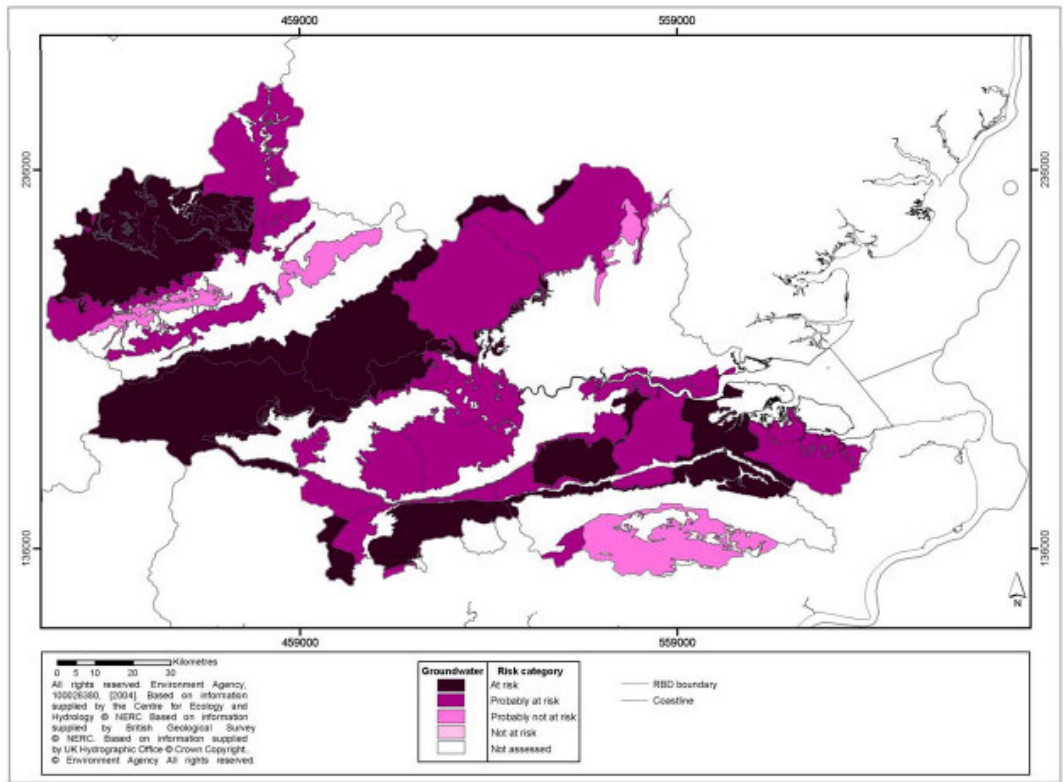
Map TH9 Abstraction and flow regulation pressures (Defra, 2005b)



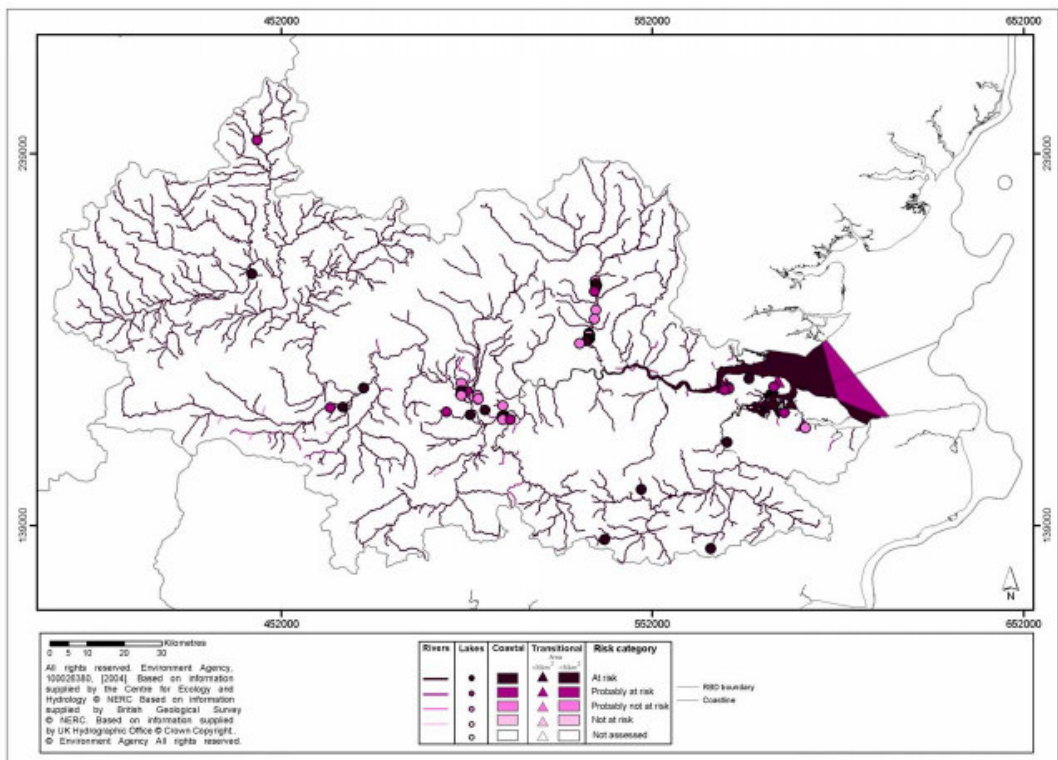
Map TH10 General Quality Assessment biology assessment (Defra, 2005b)



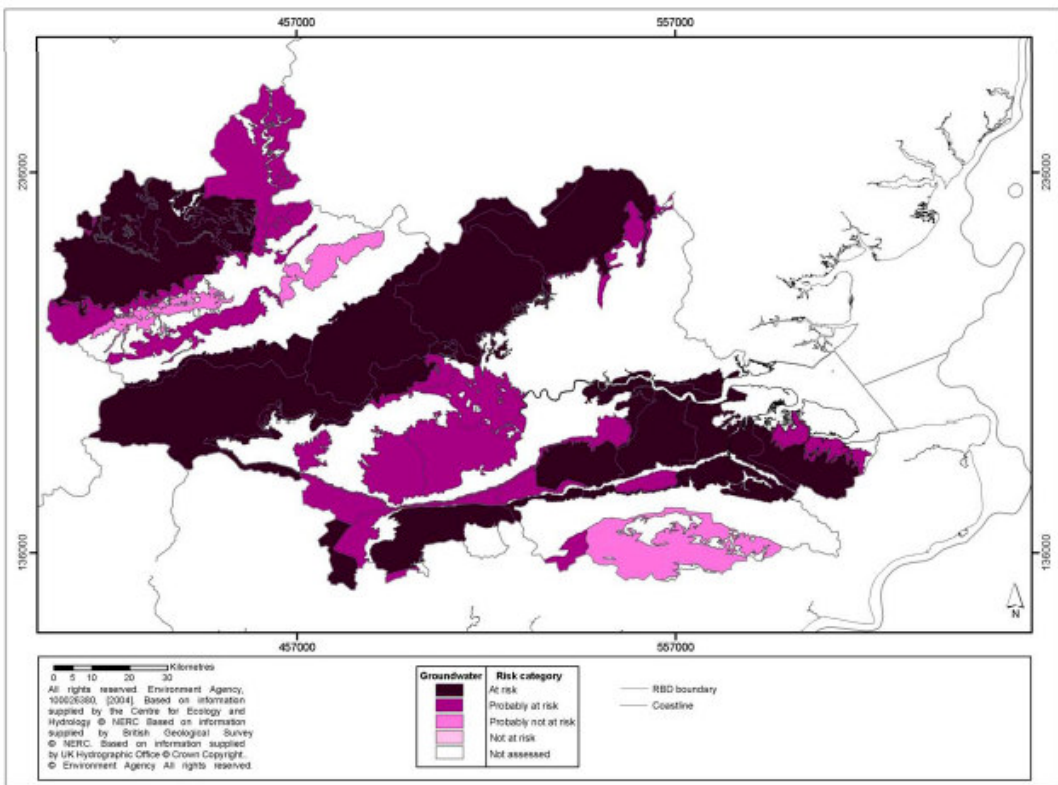
Map TH11 Surface water bodies at risk from diffuse pollution sources (Defra, 2005b)



Map TH12 Groundwater water bodies at risk from diffuse pollution sources (Defra, 2005b)



Map TH13 Surface water bodies at risk from all pressure categories (Defra, 2005b)



Map TH14 Groundwater water bodies at risk from all pressure categories (Defra, 2005b)