



Corrigendum

Corrigendum to ‘A national-scale preliminary overview study of poly- and perfluoroalkyl substances (PFAS) occurrence in aquatic environments of England, UK’ [Chemosphere 394 (2026) 144804]

R.J. Patel ^{a,*}, D.C. Goody ^b, B. Marchant ^a, D.J. Lapworth ^a, A. James ^c, M. Cook ^c, K. Darby ^d, T. Besien ^e

^a British Geological Survey, Nicker Hill, Keyworth, Nottinghamshire, NG12 5GG, UK

^b UK Centre of Ecology and Hydrology, Maclean Building, Crowmarsh Gifford, Wallingford, Oxfordshire, OX10 8BB, UK

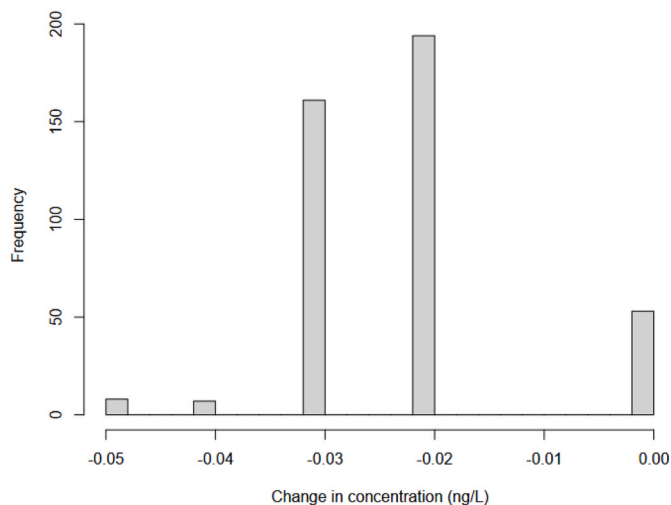
^c Environment Agency, National Laboratory Service, Starcross Laboratory, Staplake Mount, Exeter, Devon, Starcross, EX6 8FD, UK

^d Environment Agency, Lady Bay Bridge, West Bridgford, Nottingham, NG2 5FA, UK

^e Environment Agency, Riversmeet House, Northway Lane, Tewkesbury, GL20 8JG, UK

The authors regret that the tables in the Appendix associated with this journal entry contain a unit error. In Table S1, the unit in the heading for the Limit of Detection (LOD) should be reported as µg/L rather than ng/L. This error affects the calculations presented in the paper, as non-detects were treated as $0.5 \times \text{LOD}$.

We believe the most effective change is to revert all <LOD values to 0 (a widely accepted method, aligned with the Drinking Water Inspectorate (DWI) approach¹), since the existing < LOD values are very small. Therefore, the changes to the sum of all PFAS are fairly negligible. A histogram summarising the net change across all sites is provided below. An example of dummy data is provided below also.



Current version

PFAS	Below LOD?	LOD (ng/L)	Result (ng/L)
PFOA	No	2	10.00
PFOS	No	2	15.00
PFHxSA	Yes	0.5	0.00025
PFHxA	Yes	0.5	0.00025

Detection frequency: 50%

Sum (ng/L): 25.0005

Corrected version

PFAS	Below LOD?	LOD (ng/L)	Result (ng/L)
PFOA	No	2	10.00
PFOS	No	2	15.00
PFHxSA	Yes	0.5	0
PFHxA	Yes	0.5	0

Detection frequency: 50%

Sum (ng/L): 25.0

Given that these changes are consistent across all sites, the interpretation and discussion in the main text remain unchanged; only the numerical values reported in the text, tables, and figures will have minor changes. The calculations are also to do with the LOD only, which are treated as unknown values, so any samples with positive detections will remain the same.

All changes are listed below in the corrigendum. In summary, Fig. 4; Fig. 5; Table 2, Table S1; Table S3 and Table S4 are updated. Therefore, values reported within the text that reference these figures or tables are updated where required and are also listed within the corrigendum.

In addition to changing the units for the LOD column, Table S1 contains two classification typo errors in the functional group column. PFPeS and PFecHS are sulfonates but were incorrectly labelled as

DOI of original article: <https://doi.org/10.1016/j.chemosphere.2025.144804>.

* Corresponding author.

E-mail address: rpatel@bgs.ac.uk (R.J. Patel).

¹ As found here: [DWI_PFAS-Guidance_Mar_2025.pdf](#)

<https://doi.org/10.1016/j.chemosphere.2026.144879>

Available online 10 March 2026

0045-6535/© 2026 The Author(s). Published by Elsevier Ltd. This is an open access article under the CC BY license (<http://creativecommons.org/licenses/by/4.0/>).

carboxylates. This correction is also amended in the corrigendum, only in Fig. 3, where the boxplot colours for these compounds are updated accordingly.

The authors apologise for the inconvenience caused. These

corrections do not alter the trends or conclusions within the paper.

Updated figures and tables within journal article

Fig. 3 (PFPeS and PFeCHs have been reclassified; values have not changed)

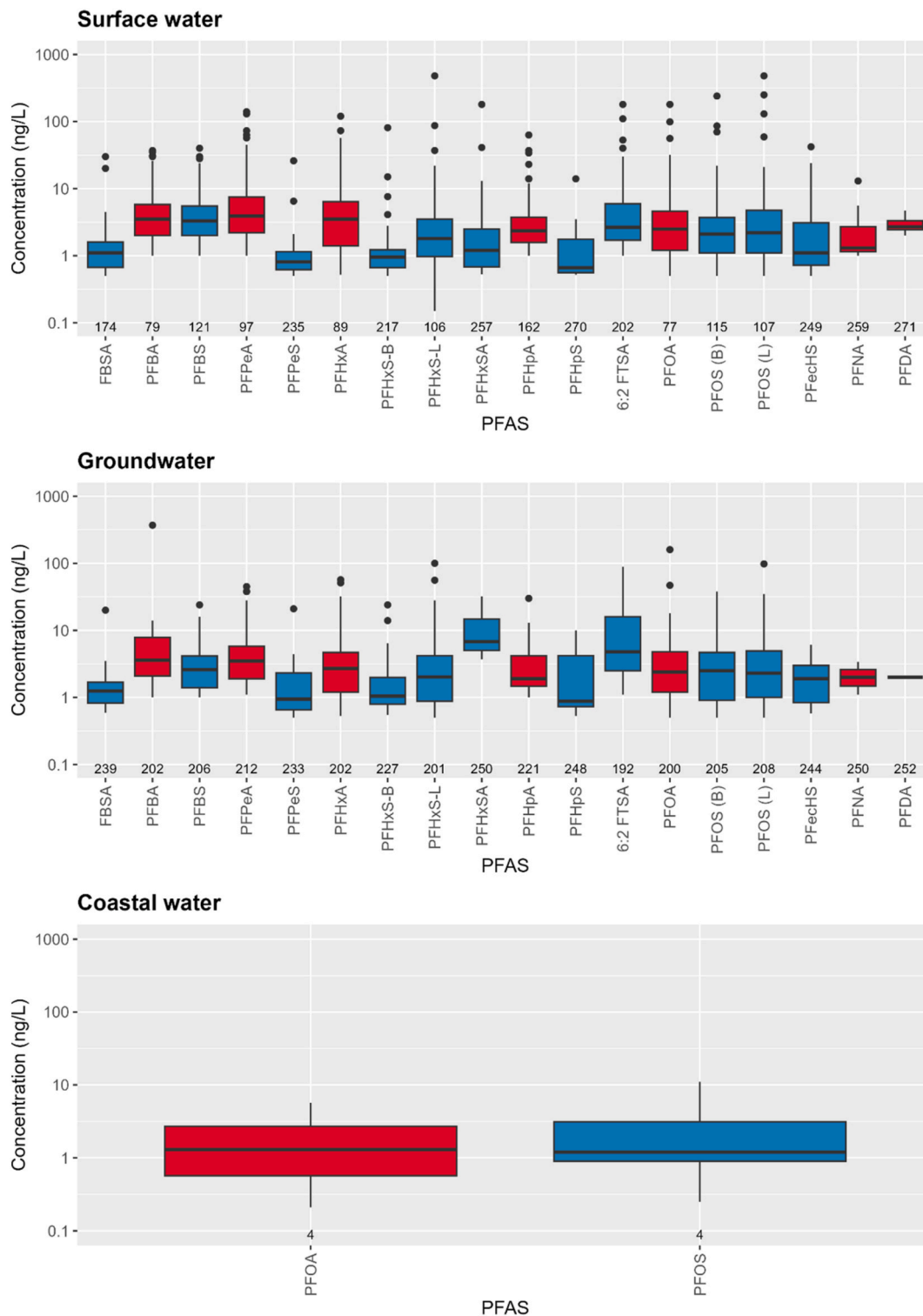
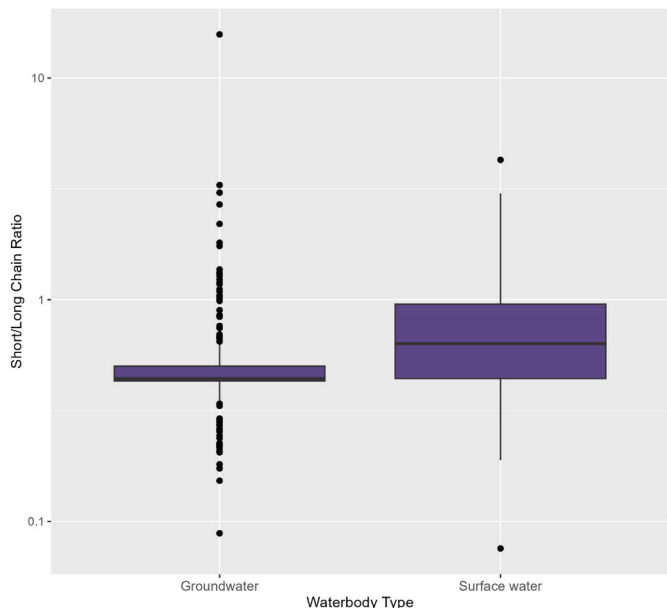


Fig. 4

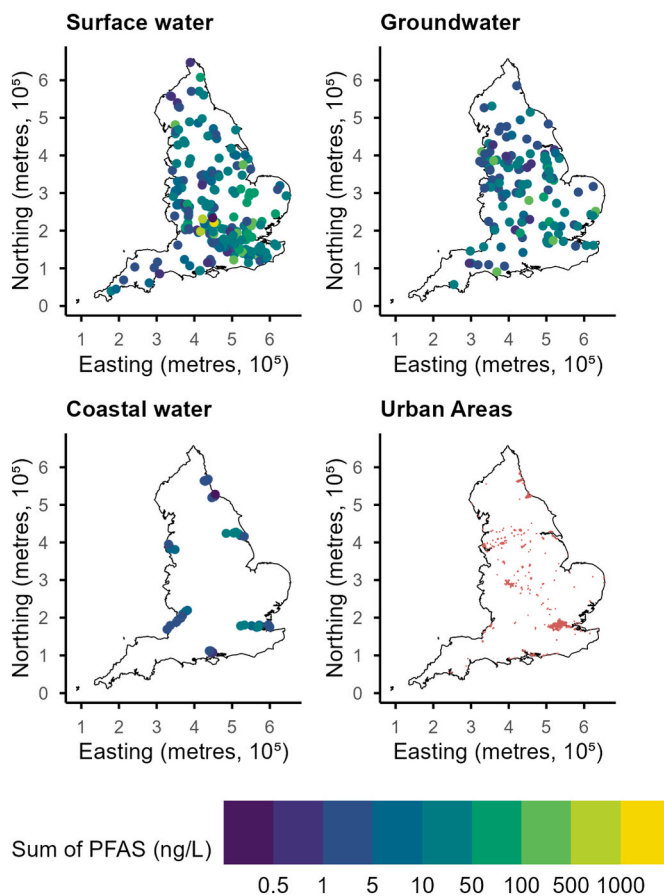


Effected text:

Section 4.1: “groundwater has a lower short/long chain ratio compared to surface waters (0.44 vs. 2.16)” changes to “groundwater has a lower short/long median chain ratio compared to surface waters (0.27 vs. 2.31).”

Fig. 5

(sites that are < LOD are removed)



Effected text:

Section 3.2: “reaching a maximum of approximately 720 ng/L” changes to “reaching a maximum of approximately 760 ng/L” (this was a typo and did not transform due to the < LOD change).

“The lowest concentrations reached 0.024 ng/L” changes to “The lowest concentrations reached 0.18 ng/L”

“where concentrations measured 8.0 ng/L, while the most downstream estuary sampling points had an average concentration of 1.25 ng/L” changes to “where concentrations measured 7.0 ng/L, while the most downstream estuary sampling points had an average concentration of 2.3 ng/L”

Abstract: “Individual PFAS concentrations at 475 sites ranged from 0.0052 to 480 ng/L while ΣPFAS concentrations per site ranged from 0.024 to 2021 ng/L.” changes to “Individual PFAS concentrations at 475 sites ranged from <LOD to 480 ng/L while ΣPFAS concentrations per site ranged from 0.18 to 2021 ng/L.”

Conclusion: “ΣPFAS concentrations per site ranges from 0.024 to 2021 ng/L” changed to “ΣPFAS concentrations per site ranges from 0.18 to 2021 ng/L”

Table 2

Changes for only (ng/L):
Coastal waters; this study
New median = 2.29 (from 1.95)
New SD = 2.41 (from 2.13)
Surface waters; this study
New median = 1.04 (from 1.05)
(Groundwater unchanged)

Updated tables within the Appendix (Supplementary Information)

Table S1

LOD unit changed from ng/L. Incorrect chain classifications have also been corrected here.

Determinand	Database abbreviation	Abbreviation	Carbon chain length	Chain classification	Molecular structure	Functional group	LOD (µg/L)
4,8-Dioxo-3H-perfluorononanoic acid (ADONA)	ADONA	ADONA	7	Short	C7H2F12O4	Carboxyl	0.005
N-Ethylperfluoro-octanesulfonamide	EtFOSA	EtFOSA	10	Long	C10H6F17NO2S	Sulfonate	0.002
2-(N-Ethylperfluorooctanesulfonamido)acetic acid (B)	EtFOSAA-B	EtFOSAA-B	12	Long	C12H8F17NO4S	Sulfonate	0.001
2-(N-Ethylperfluorooctanesulfonamido)acetic acid (L)	EtFOSAA-L	EtFOSAA-L	12	Long	C12H8F17NO4S	Sulfonate	0.001
N-Ethyl-N-(2-hydroxyethyl) perfluorooctanesulfonamide	EtFOSE	EtFOSE	12	Long	C12H10F17NO3S	Sulfonate	0.02
Perfluorobutylsulfonamide (perfluorobutane sulfonamide)	FBSA	FBSA	4	Short	C4H2F9NO2S	Sulfonate	0.0005
Perfluorooctanesulfonamide	FOSA	FOSA	8	Long	C8H2F17NO2S	Sulfonate	0.001
2-(N-Methylperfluorooctanesulfonamido)acetic acid (B)	MeFOSAA-B	MeFOSAA-B	11	Long	C11H6F17NO4S	Sulfonate	0.001
2-(N-Methylperfluorooctanesulfonamido)acetic acid (L)	MeFOSAA-L	MeFOSAA-L	11	Long	C11H6F17NO4S	Sulfonate	0.001
N-Methyl-N-(2-hydroxyethyl) perfluorooctanesulfonamide	MeFOSE	MeFOSE	11	Long	C11H8F17NO3S	Sulfonate	0.02
Perfluoro-3,6-dioxaheptanoic acid	NFDHA	NFDHA	5	Short	C5HF9O4	Carboxyl	0.0005
N-methylperfluorooctanesulfonamide	N-MeFOSA	N-MeFOSA	9	Long	C9H4F17NO2S	Sulfonate	0.002
Perfluorobutanoic acid	PFBA	PFBA	4	Short	C4HF7O2	Carboxyl	0.001
Perfluorobutanesulfonic acid	PFBS	PFBS	4	Short	C4HF9O3S	Sulfonate	0.001
Perfluorodecanoic acid	PFdecncAcid	PFDA	10	Long	C10HF19O2	Carboxyl	0.002
Perfluorododecanoic acid	PFdodencAcid	PFDoA	12	Long	C12HFF23O2	Carboxyl	0.002
Perfluorododecane sulfonic acid	PFDoS	PFDoS	11	Long	C12HF25O3S	Carboxyl	0.005
Perfluorodecanesulfonic acid	PFDS	PFDS	10	Long	C10HF21O3S	Sulfonate	0.002
Perfluoro-4-ethylcyclohexanesulfonic acid	PFecHS	PFecHS	8	Long	C8HF15O3S	Carboxyl	0.0005
Perfluoro(2-ethoxyethane)sulfonic acid	PFEESA	PFEESA	4	Short	C4HF9O4S	Sulfonate	0.0005
Perfluoroheptanoic acid	PFheptncAcid	PFHpA	7	Short	C7HF13O2	Carboxyl	0.001
Perfluorohexanoic acid	PFhexncAcid	PFHxA	6	Short	C6HF11O2	Carboxyl	0.0005
Perfluoroheptanesulfonic acid	PFHpS	PFHpS	7	Short	C7HF15O3S	Sulfonate	0.0005
Perfluorohexanesulfonamide	PFHxSA	PFHxSA	6	Short	C6HF13O3S	Sulfonate	0.0005
Perfluorohexanesulfonic acid (B)	PFHxS-B	PFHxS-B	6	Short	C6HF13O3S	Sulfonate	0.0005
Perfluorohexanesulfonic acid (L)	PFHxS-L	PFHxS-L	6	Short	C6HF13O3S	Sulfonate	0.004
Perfluoro(4-methoxybutanoic) acid	PFMOBA	PFMOBA	5	Short	C5HF9O3	Carboxyl	0.0005
Perfluoro-3-methoxypropanoic acid	PFMOPrA	PFMOPrA	4	Short	C4HF7O3	Carboxyl	0.0005
Perfluorononanoic acid	PFnonncAcid	PFNA	9	Long	C9HF17O2	Carboxyl	0.001
Perfluorononanesulfonic acid	PFNS	PFNS	9	Long	C9F19O3S	Carboxyl	0.0005
Perfluorooctanoic acid	PFoctncAcid	PFOA	8	Long	C8HF15O2	Carboxyl	0.002
Perfluorooctadecanoic acid	PFODA	PFODA	18	Long	C18HF35O2	Carboxyl	0.0004
Perfluorooctylsulphonate anion	PFOS	PFOS	8	Long	C8HF17O2-S	Sulfonate	0.0005
Perfluorooctanesulfonic acid (branched)	PFOS (B)	PFOS (B)	8	Long	C8HF17O3S	Sulfonate	0.0005
Perfluorooctanesulfonic acid (linear)	PFOS (L)	PFOS (L)	8	Long	C8HF17O3S	Sulfonate	0.0005
Perfluorooctanesulfonic acid (total)	PFOS (T)	PFOS (T)	8	Long	C8HF17O3S	Sulfonate	0.001
Perfluoropentanoic acid	PFpentncAcid	PFPeA	5	Short	C5HF9O2	Carboxyl	0.001
Perfluoropentanesulfonic acid	PFPeS	PFPeS	5	Short	C5HF11O3S	Carboxyl	0.0005
Perfluorotetradecanoic acid	PFtetdncAcid	PFTeA	14	Long	C14HF27O2	Carboxyl	0.005
Perfluorotridecanoic acid	PFTrDA	PFTrDA	13	Long	C13HF25O2	Carboxyl	0.005
Perfluoroundecanoic acid	PFundencAcid	PFUnA	10	Long	C11HF21O2	Carboxyl	0.002
Perfluoroundecane sulfonic acid	PFUnDS	PFUnDS	10	Long	C10HF21O3S	Sulfonate	0.004
Hexafluoropropylene oxide dimer acid	HFPO-DA	HFPO-DA	6	Short	C6H4F11NO3	Carboxyl	0.001
Hexafluoropropylene oxide trimer acid	HFPO-TA	HFPO-TA	9	Long	C9HF18O4	Carboxyl	0.001
9-chlorohexadecafluoro-3-oxanonane-1-sulfonic acid	9Cl-PF3ONS	F-53B	8	Long	C8ClF16KO4S	Sulfonate	0.0005
11-chloroicosafuoro-3-oxaundecane-1-sulfonic acid	11Cl-PF3OUdS	8:2 Cl-PFESA	10	Long	C10HClF20O4S	Sulfonate	0.001

Table S3

All minimum and median values changed to < LOD where applicable.

Determinand	Min	Median	95th percentile	Max	SD	Detection frequency (%)
PFOA	<LOD	1.2	3.99	5.7	1.42	91
PFOS	<LOD	1.2	8	11	2.96	91

Coastal waters:PFOS SD changed from 2.62 to 2.96 and 95th percentile from 7.58 to 8.00.

Determinand	Min	Median	95th percentile	Max	SD	Detection frequency (%)
FBSA	<LOD	<LOD	0.6	20	1.3	6
PFBA	<LOD	<LOD	7.82	370	23.34	20
PFBS	<LOD	<LOD	3.98	24	2.27	19
PFPeA	<LOD	<LOD	4.88	45	5.15	16
PFPeS	<LOD	<LOD	0.67	21	1.4	8
PFHxA	<LOD	<LOD	4.7	57	5.76	20
PFHxS-B	<LOD	<LOD	1.04	24	1.82	10
PFHxS-L	<LOD	<LOD	4.42	100	7.55	21
PFHxSA	<LOD	<LOD	<LOD	32	2.07	1
PFHpA	<LOD	<LOD	2.28	30	2.54	13
PFHpS	<LOD	<LOD	<LOD	10	0.68	2
6:2 FTSA	<LOD	<LOD	17	89	10.29	24
PFOA	<LOD	<LOD	4.96	160	10.66	21
PFOS (B)	<LOD	<LOD	6.16	38	3.25	25
PFOS (L)	<LOD	<LOD	6.37	98	6.64	24
PFecHS	<LOD	<LOD	<LOD	6.1	0.52	4
PFNA	<LOD	<LOD	<LOD	3.4	0.26	1

Groundwater:No other changes.

Determinand	Median	Min	95th percentile	Max	SD	Detection frequency (%)
FBSA	<LOD	<LOD	2	30	2.25	37
PFBA	2.25	<LOD	12	37	5.33	72
PFBS	1.4	<LOD	7.81	40	4.59	56
PFPeA	2.1	<LOD	16	140	13.93	65
PFPeS	<LOD	<LOD	1	26	1.63	15
PFHxA	1.5	<LOD	15	120	10.58	68
PFHxS-B	<LOD	<LOD	1.3	81	4.98	22
PFHxS-L	0.74	<LOD	7.41	480	29.32	62
PFHxSA	<LOD	<LOD	0.75	180	11.09	8
PFHpA	<LOD	<LOD	5.21	63	5.32	42
PFHpS	<LOD	<LOD	<LOD	14	0.87	3
6:2 FTSA	<LOD	<LOD	7.73	180	13.52	27
PFOA	1.6	<LOD	11	180	13.13	72
PFOS (B)	0.93	<LOD	7.02	240	15.11	63
PFOS (L)	1	<LOD	8.86	480	31.71	65
PFecHS	<LOD	<LOD	1.11	42	2.96	10
PFNA	<LOD	<LOD	1.11	13	0.98	7
PFDA	<LOD	<LOD	<LOD	4.7	0.49	3

Surface waters:Three 95th percentiles varied by ±0.01 (PFBS; PFHxS-L and PFHpA).

Table S4

Few concentrations decreased between 0 and 0.05 ng/L. See histogram in the beginning of the corrigendum for the summary of changes.

Easting	Northing	Waterbody	ΣPFAS (ng/L)	Log10 ΣPFAS
452233	221701	Surface water	2021	3.31
416395	198171	Surface water	763	2.88
421993	231166	Surface water	579	2.76
630410	251485	Groundwater	422	2.62
554950	221230	Surface water	392	2.59
343730	398540	Groundwater	376	2.58
349342	481437	Surface water	356	2.55
512190	169160	Surface water	330	2.52
359940	386040	Groundwater	298	2.47
368440	90490	Groundwater	265	2.42
328180	409710	Groundwater	219	2.34
572115	131702	Surface water	146	2.16
517828	173889	Groundwater	140	2.15
504400	122200	Surface water	137	2.14

(continued on next column)

(continued)

Easting	Northing	Waterbody	ΣPFAS (ng/L)	Log10 ΣPFAS
526970	143350	Surface water	125	2.10
551158	213121	Surface water	122	2.09
465656	168314	Surface water	119	2.07
453500	280350	Groundwater	116	2.06
451599	191495	Surface water	115	2.06
516360	155190	Surface water	113	2.05
512974	193261	Surface water	112	2.05
529251	375078	Surface water	111	2.05
505284	364340	Groundwater	98.0	1.99
433760	209035	Surface water	94.7	1.98
518352	150282	Surface water	91.5	1.96
503330	169073	Surface water	90.0	1.95
504393	236465	Surface water	89.5	1.95
546954	300696	Surface water	85.1	1.93
516342	174792	Surface water	82.8	1.92
544590	291234	Surface water	82.7	1.92
519340	334090	Groundwater	82.0	1.91
517297	177321	Surface water	81.7	1.91
552370	182620	Surface water	81.2	1.91
549660	212899	Surface water	79.7	1.90
539315	274729	Surface water	78.5	1.89
516196	156369	Surface water	77.4	1.89
541939	191565	Surface water	75.4	1.88
430320	193707	Groundwater	72.2	1.86
557268	299706	Surface water	71.4	1.85
491360	178670	Surface water	70.6	1.85
485350	171240	Surface water	70.5	1.85
382860	220890	Surface water	70.2	1.85
614900	244800	Surface water	69.2	1.84
522951	310658	Surface water	69.2	1.84
627372	243235	Groundwater	67.3	1.83
515330	168180	Surface water	67.1	1.83
375988	208885	Surface water	67.0	1.83
579001	224510	Surface water	67.0	1.83
473190	164670	Surface water	65.9	1.82
558900	300900	Surface water	62.1	1.79
507780	224030	Groundwater	62.1	1.79
582553	143944	Surface water	61.3	1.79
537833	176321	Surface water	61.0	1.79
381270	270790	Surface water	60.7	1.78
415940	607780	Surface water	60.1	1.78
537600	144900	Surface water	59.0	1.77
503949	183344	Surface water	58.2	1.77
538507	208136	Surface water	58.0	1.76
384470	256480	Surface water	56.9	1.76
537700	184500	Surface water	56.6	1.75
501930	172165	Surface water	54.7	1.74
492800	289400	Groundwater	50.7	1.71
458837	221580	Surface water	50.3	1.70
538725	200012	Surface water	49.6	1.70
431262	219724	Surface water	48.4	1.68
499924	389477	Groundwater	47.7	1.68
456783	164791	Surface water	46.9	1.67
512100	198100	Surface water	46.0	1.66
477880	176590	Surface water	45.3	1.66
495535	389471	Groundwater	44.1	1.64
537482	194974	Surface water	44.1	1.64
525580	174880	Surface water	41.4	1.62
465265	343653	Surface water	41.2	1.61
535642	150884	Surface water	40.7	1.61
521510	175540	Surface water	40.6	1.61
254470	56850	Groundwater	39.6	1.60
527510	145120	Surface water	39.5	1.60
509640	167510	Surface water	39.4	1.60
449985	215130	Surface water	39.3	1.59
488062	155936	Surface water	38.4	1.58
430849	265463	Surface water	38.4	1.58
452255	309802	Surface water	38.2	1.58
542481	390396	Surface water	37.7	1.58
502250	171820	Surface water	37.0	1.57
375171	432816	Surface water	36.8	1.57
363000	201680	Groundwater	36.7	1.57
342446	398603	Groundwater	36.6	1.56
425814	222160	Surface water	36.5	1.56
490830	212622	Groundwater	35.4	1.55
505200	186300	Surface water	35.4	1.55

(continued on next page)

(continued)

Easting	Northing	Waterbody	ΣPFAS (ng/L)	Log10 ΣPFAS
333418	157182	Groundwater	35.2	1.55
440440	262670	Surface water	35.1	1.55
546020	145950	Surface water	34.9	1.54
544870	171497	Groundwater	34.7	1.54
477697	178365	Surface water	34.4	1.54
441040	265070	Surface water	34.2	1.53
506914	167424	Surface water	34.0	1.53
552064	143822	Surface water	33.5	1.53
440700	269200	Surface water	32.8	1.52
413742	93532	Surface water	32.8	1.52
355110	531400	Groundwater	32.7	1.51
437109	319928	Groundwater	32.0	1.51
503300	171600	Surface water	31.9	1.50
300700	113300	Groundwater	31.9	1.50
526574	347543	Surface water	31.7	1.50
353017	378474	Surface water	31.4	1.50
421581	375850	Groundwater	31.3	1.49
400420	367760	Groundwater	31.1	1.49
579893	144438	Surface water	30.5	1.48
372927	436058	Surface water	30.1	1.48
420035	280254	Surface water	29.8	1.47
480465	203694	Surface water	29.4	1.47
501817	306026	Surface water	29.4	1.47
437299	322083	Groundwater	29.3	1.47
457200	404410	Groundwater	29.3	1.47
527000	272800	Groundwater	29.1	1.46
497350	418990	Surface water	28.9	1.46
362900	331600	Surface water	28.5	1.46
429020	386569	Groundwater	28.3	1.45
488190	149950	Surface water	28.3	1.45
588980	141839	Surface water	28.1	1.45
503966	168198	Groundwater	28.0	1.45
465590	392680	Surface water	28.0	1.45
533833	391976	Groundwater	27.6	1.44
505300	164100	Surface water	27.3	1.44
506506	168289	Groundwater	27.0	1.43
449262	324167	Groundwater	27.0	1.43
507500	299100	Surface water	26.8	1.43
438600	215520	Surface water	26.7	1.43
356434	427775	Surface water	26.4	1.42
349888	457409	Surface water	26.4	1.42
446113	240171	Surface water	26.3	1.42
575900	147800	Surface water	26.2	1.42
450958	213278	Surface water	25.8	1.41
382850	253950	Surface water	25.8	1.41
435897	451636	Surface water	25.7	1.41
427980	298900	Groundwater	25.7	1.41
538504	209875	Surface water	25.3	1.40
503208	169044	Groundwater	25.0	1.40
507034	167524	Groundwater	25.0	1.40
474830	159900	Surface water	25.0	1.40
575531	215354	Surface water	24.2	1.38
501049	173112	Surface water	24.0	1.38
436438	322497	Groundwater	24.0	1.38
473015	173702	Surface water	23.8	1.38
358081	468399	Surface water	23.7	1.38
376550	259930	Surface water	22.9	1.36
503496	170115	Groundwater	22.8	1.36
366542	313873	Surface water	22.3	1.35
623262	239869	Groundwater	22.0	1.34
509888	338197	Groundwater	22.0	1.34
449611	196748	Surface water	22.0	1.34
532080	192350	Groundwater	21.4	1.33
389705	390874	Surface water	21.3	1.33
593456	130156	Surface water	21.3	1.33
499697	345569	Groundwater	21.0	1.32
507480	165520	Surface water	20.8	1.32
499815	176180	Surface water	20.8	1.32
457048	515088	Groundwater	20.6	1.31
521180	213060	Groundwater	20.2	1.31
624617	160945	Groundwater	20.0	1.30
552207	136531	Surface water	20.0	1.30
612578	164460	Surface water	19.8	1.30
505100	186100	Groundwater	19.8	1.30
618048	159829	Surface water	19.7	1.29
529130	139690	Surface water	19.6	1.29

(continued on next column)

(continued)

Easting	Northing	Waterbody	ΣPFAS (ng/L)	Log10 ΣPFAS
617839	243544	Groundwater	19.3	1.29
298150	145852	Groundwater	19.3	1.28
444800	210200	Surface water	19.3	1.28
535200	214300	Surface water	19.1	1.28
605380	160720	Groundwater	19.0	1.28
348475	366108	Groundwater	18.9	1.28
386122	378821	Surface water	18.5	1.27
505700	136990	Surface water	18.5	1.27
382650	218140	Surface water	18.5	1.27
507074	358032	Groundwater	18.3	1.26
384250	264950	Groundwater	18.2	1.26
437187	224510	Groundwater	18.0	1.26
500600	173882	Surface water	17.7	1.25
499980	146260	Surface water	17.7	1.25
412851	570698	Surface water	17.5	1.24
454656	307756	Surface water	17.2	1.24
430026	272960	Surface water	17.2	1.24
430027	365132	Groundwater	17.0	1.23
401930	222880	Groundwater	17.0	1.23
502802	378284	Groundwater	17.0	1.23
179087	39436	Surface water	16.9	1.23
449500	229000	Surface water	16.5	1.22
543517	135035	Surface water	16.3	1.21
445625	171904	Surface water	16.2	1.21
570900	153300	Surface water	16.1	1.21
382536	297658	Groundwater	16.0	1.20
575900	155500	Surface water	15.5	1.19
444566	269837	Surface water	15.1	1.18
574892	158154	Surface water	15.0	1.18
501846	369640	Groundwater	15.0	1.18
503103	170125	Groundwater	14.9	1.17
384910	249030	Surface water	14.7	1.17
388000	379400	Groundwater	14.5	1.16
509567	467738	Surface water	14.2	1.15
503101	169981	Groundwater	13.7	1.14
502849	170007	Groundwater	13.6	1.13
505311	167299	Groundwater	13.5	1.13
420676	497846	Surface water	13.1	1.12
582758	211604	Groundwater	13.0	1.11
426845	366403	Groundwater	13.0	1.11
503939	168171	Surface water	12.9	1.11
383410	250680	Surface water	12.9	1.11
352700	315400	Groundwater	12.9	1.11
367850	387890	Groundwater	12.7	1.10
575761	152123	Surface water	12.4	1.09
643500	292700	Surface water	12.4	1.09
543300	114800	Surface water	12.3	1.09
502952	169790	Surface water	12.2	1.09
472670	205526	Surface water	12.2	1.08
387118	489270	Surface water	12.1	1.08
502824	187535	Surface water	12.1	1.08
347100	431600	Groundwater	12.1	1.08
344141	291071	Surface water	12.0	1.08
424465	560575	Surface water	12.0	1.08
505801	167562	Groundwater	11.9	1.08
374930	326770	Groundwater	11.9	1.07
548400	248500	Groundwater	11.6	1.07
444902	453680	Surface water	11.6	1.06
505454	167393	Surface water	11.5	1.06
507300	194300	Surface water	11.3	1.05
383780	237130	Surface water	11.2	1.05
503264	168819	Groundwater	10.8	1.03
504125	167725	Groundwater	10.8	1.03
502897	170179	Groundwater	10.8	1.03
530500	141900	Surface water	10.8	1.03
489003	358159	Surface water	10.7	1.03
496048	398591	Groundwater	10.6	1.02
505552	166798	Surface water	10.5	1.02
371560	438724	Surface water	10.4	1.02
440068	195626	Surface water	10.3	1.01
569040	148861	Surface water	10.1	1.00
349300	319500	Groundwater	9.90	1.00
572733	143138	Surface water	9.65	0.98
445783	359074	Surface water	9.43	0.97
503079	169599	Surface water	9.40	0.97
510936	400165	Surface water	9.40	0.97

(continued on next page)

(continued)

Easting	Northing	Waterbody	ΣPFAS (ng/L)	Log10 ΣPFAS
504629	167691	Groundwater	9.40	0.97
387050	263250	Surface water	9.16	0.96
505369	167514	Groundwater	9.10	0.96
450424	471109	Surface water	8.97	0.95
480500	156500	Surface water	8.91	0.95
397400	367500	Groundwater	8.90	0.95
467400	154600	Surface water	8.78	0.94
504087	167824	Surface water	8.70	0.94
531800	213000	Surface water	8.55	0.93
355241	309886	Surface water	8.52	0.93
354984	331222	Surface water	8.50	0.93
502872	167923	Groundwater	8.50	0.93
507389	166376	Groundwater	8.30	0.92
459334	444561	Surface water	8.28	0.92
357400	268300	Surface water	8.26	0.92
503683	166958	Surface water	8.20	0.91
506187	167479	Surface water	8.20	0.91
502952	169913	Groundwater	8.20	0.91
192102	44752	Surface water	8.15	0.91
504890	403100	Surface water	8.13	0.91
357568	272249	Surface water	8.02	0.90
503247	168724	Surface water	8.00	0.90
571698	128402	Surface water	7.97	0.90
626700	319800	Surface water	7.97	0.90
463620	158760	Surface water	7.93	0.90
365600	272400	Surface water	7.90	0.90
410500	195200	Surface water	7.81	0.89
331800	382120	Groundwater	7.56	0.88
543800	128900	Surface water	7.51	0.88
540023	215443	Surface water	7.50	0.88
505462	166716	Surface water	7.50	0.88
387717	106747	Surface water	7.44	0.87
280100	61220	Surface water	7.40	0.87
373710	123468	Surface water	7.30	0.86
450028	460207	Surface water	7.04	0.85
501514	172281	Groundwater	7.00	0.85
502839	169725	Groundwater	7.00	0.85
437554	142086	Groundwater	6.84	0.84
523988	406231	Groundwater	6.79	0.83
502187	167984	Surface water	6.70	0.83
503286	168774	Surface water	6.70	0.83
503689	170356	Surface water	6.60	0.82
538650	211770	Groundwater	6.60	0.82
439445	241249	Groundwater	6.54	0.82
433903	347729	Surface water	6.52	0.81
503110	167911	Surface water	6.50	0.81
588522	125816	Surface water	6.43	0.81
507178	166748	Surface water	6.40	0.81
353400	268300	Surface water	6.10	0.79
383690	291600	Groundwater	6.10	0.79
506789	167490	Surface water	6.00	0.78
504340	167712	Surface water	5.90	0.77
426780	217816	Surface water	5.89	0.77
503545	169991	Surface water	5.70	0.76
505448	166638	Surface water	5.70	0.76
349270	305854	Surface water	5.69	0.76
415461	93793	Surface water	5.67	0.75
430500	494500	Groundwater	5.60	0.75
409930	486151	Surface water	5.50	0.74
393264	297616	Groundwater	5.50	0.74
445202	331459	Surface water	5.39	0.73
504180	168103	Surface water	5.30	0.72
505420	167245	Surface water	5.30	0.72
408035	453664	Groundwater	5.18	0.71
534195	402113	Surface water	5.17	0.71
504270	167358	Surface water	5.10	0.71
379540	156370	Groundwater	5.10	0.71
507001	167423	Surface water	4.90	0.69
507941	165950	Surface water	4.90	0.69
447936	443502	Groundwater	4.87	0.69
341800	360100	Surface water	4.85	0.69
373550	464620	Groundwater	4.80	0.68
384900	240890	Surface water	4.79	0.68
507613	167305	Surface water	4.70	0.67
507546	165926	Surface water	4.70	0.67
516734	340003	Groundwater	4.70	0.67

(continued on next column)

(continued)

Easting	Northing	Waterbody	ΣPFAS (ng/L)	Log10 ΣPFAS
360780	209960	Groundwater	4.67	0.67
436020	181610	Groundwater	4.62	0.66
364592	320396	Groundwater	4.50	0.65
499670	207784	Surface water	4.44	0.65
350160	409640	Groundwater	4.30	0.63
335500	312700	Groundwater	4.30	0.63
620600	309500	Surface water	4.27	0.63
507504	166385	Surface water	4.20	0.62
432840	301400	Groundwater	4.20	0.62
502446	349802	Groundwater	4.13	0.62
336130	403760	Groundwater	4.10	0.61
422876	328744	Surface water	4.09	0.61
461808	168620	Surface water	4.06	0.61
393913	448983	Groundwater	4.06	0.61
449609	350563	Surface water	4.04	0.61
335800	558800	Surface water	3.94	0.60
503001	169665	Groundwater	3.90	0.59
329880	380030	Groundwater	3.80	0.58
463369	349090	Surface water	3.77	0.58
564700	135900	Surface water	3.74	0.57
350315	464630	Surface water	3.70	0.57
441997	123485	Surface water	3.65	0.56
347566	298554	Surface water	3.60	0.56
355800	305700	Surface water	3.60	0.56
383900	288800	Groundwater	3.60	0.56
346700	109700	Groundwater	3.53	0.55
360394	528201	Surface water	3.50	0.54
427250	324250	Groundwater	3.50	0.54
506352	195398	Surface water	3.46	0.54
370700	333329	Surface water	3.30	0.52
549198	363360	Surface water	3.30	0.52
501070	173088	Groundwater	3.30	0.52
382650	204550	Surface water	3.28	0.52
417713	346351	Surface water	3.24	0.51
423000	348900	Surface water	3.20	0.51
624267	317490	Groundwater	3.10	0.49
388670	105760	Groundwater	3.04	0.48
573908	215793	Groundwater	2.90	0.46
574244	119844	Surface water	2.86	0.46
448692	167433	Surface water	2.80	0.45
343620	384570	Groundwater	2.80	0.45
539200	224800	Surface water	2.63	0.42
456840	455364	Surface water	2.62	0.42
421180	585400	Groundwater	2.60	0.41
346322	224682	Groundwater	2.50	0.40
355986	335213	Groundwater	2.37	0.37
356019	161772	Surface water	2.36	0.37
434470	222770	Groundwater	2.29	0.36
386300	202810	Surface water	2.26	0.35
503214	154352	Surface water	2.23	0.35
378360	475670	Groundwater	2.20	0.34
394393	476924	Groundwater	2.10	0.32
504688	308080	Groundwater	2.04	0.31
357612	530431	Surface water	2.02	0.31
383550	252450	Surface water	2.01	0.30
323150	384420	Groundwater	2.00	0.30
376090	202250	Surface water	1.95	0.29
584617	302394	Groundwater	1.80	0.26
302294	116732	Surface water	1.70	0.23
419413	301138	Groundwater	1.70	0.23
440698	191619	Surface water	1.50	0.18
426385	362600	Groundwater	1.50	0.18
334750	526860	Groundwater	1.50	0.18
293608	101640	Surface water	1.48	0.17
391930	570555	Surface water	1.40	0.15
513377	372689	Surface water	1.40	0.15
375160	339880	Groundwater	1.40	0.15
350540	360740	Groundwater	1.40	0.15
372280	312520	Groundwater	1.40	0.15
445372	115634	Surface water	1.35	0.13
505100	483600	Groundwater	1.30	0.11
498034	199626	Surface water	1.23	0.09
242062	103390	Surface water	1.20	0.08
452303	261536	Surface water	1.20	0.08
384750	205550	Surface water	1.20	0.08
212422	68906	Surface water	1.20	0.08

(continued on next page)

(continued)

Easting	Northing	Waterbody	ΣPFAS (ng/L)	Log10 ΣPFAS
347803	238940	Surface water	1.20	0.08
407080	399420	Groundwater	1.20	0.08
318365	109418	Groundwater	1.20	0.08
577418	158908	Groundwater	1.20	0.08
361722	202298	Groundwater	1.10	0.04
476100	426800	Groundwater	1.07	0.03
398080	385300	Groundwater	1.02	0.01
307896	85282	Surface water	1.00	0.00
496126	403067	Groundwater	1.00	0.00
420676	321389	Surface water	0.90	-0.05
435130	115240	Surface water	0.81	-0.09
494704	197920	Surface water	0.77	-0.11
358020	428310	Groundwater	0.76	-0.12
339046	557146	Surface water	0.68	-0.17
435963	339797	Surface water	0.66	-0.18

(continued on next column)

(continued)

Easting	Northing	Waterbody	ΣPFAS (ng/L)	Log10 ΣPFAS
435294	115330	Surface water	0.64	-0.19
373856	270192	Surface water	0.62	-0.21
354993	540327	Surface water	0.58	-0.24
295490	113340	Groundwater	0.58	-0.24
417211	202017	Groundwater	0.58	-0.24
521280	414950	Groundwater	0.58	-0.24
392700	397640	Groundwater	0.58	-0.24
389025	647280	Surface water	0.56	-0.25
407200	201700	Surface water	0.55	-0.26
455600	229900	Groundwater	0.55	-0.26
487206	143517	Surface water	0.54	-0.27
459546	377703	Groundwater	0.53	-0.28
448900	368012	Groundwater	0.51	-0.29
448452	233912	Surface water	0.18	-0.74