

Temporal changes of headwater river surface microlayer characteristics during the dry to wet season transition in the tropical rainforest of Guyana

Received: 8 July 2025

Accepted: 12 November 2025

Published online: 28 November 2025

Cite this article as: Norouzi S., Spray J., Trojahn S. *et al.* Temporal changes of headwater river surface microlayer characteristics during the dry to wet season transition in the tropical rainforest of Guyana. *Sci Rep* (2025). <https://doi.org/10.1038/s41598-025-28843-4>

Sevda Norouzi, James Spray, Sara Trojahn, Juliane Bischoff, Julian Brasche, Thomas Wagner, Walter Hill, Alan MacDonald & Ryan Pereira

We are providing an unedited version of this manuscript to give early access to its findings. Before final publication, the manuscript will undergo further editing. Please note there may be errors present which affect the content, and all legal disclaimers apply.

If this paper is publishing under a Transparent Peer Review model then Peer Review reports will publish with the final article.

Temporal Changes of Headwater River Surface Microlayer Characteristics during the Dry to Wet Season Transition in the Tropical Rainforest of Guyana

Sevda Norouzi^{1*}, S.Norouzi_Alibabalou@hw.ac.uk

James Spray¹, J.Spray@hw.ac.uk

Sara Trojahn^{1 & 2}, Sara.Trojahn@hutton.ac.uk

Juliane Bischoff¹, J.Bischoff@hw.ac.uk

Julian Brasche³, Irlstaff@iwokrama.org

Thomas Wagner¹, T.Wagner@hw.ac.uk

Walter Hill¹

Alan MacDonald⁴, amm@bgs.ac.uk

Ryan Pereira^{1*}, R.Pereira@hw.ac.uk

¹The Lyell Centre, Heriot-Watt University, Edinburgh, United Kingdom

²Current Affiliation: The James Hutton Institute, Aberdeen, United Kingdom

³Iwokrama International Centre for Rainforest Conservation and Development, Georgetown, Guyana

⁴British Geological Survey, Edinburgh, United Kingdom

*Corresponding authors

Note: We deeply regret to inform that one of the authors, Walter Hill, has passed away during the preparation of this manuscript. His contributions were invaluable, and he will be greatly missed.

Abstract

The surface microlayer (SML) is a fundamental control of energy transfer, biogeochemical processes, and climate-active gases flux at the water-atmosphere interface. Organic matter in the SML has an important role in marine environments but inland waters have received far less attention. This results in large unknowns of SML variability and its impact on

boundary layer exchanges. In this study we investigate variations in dissolved organic carbon (DOC) and dissolved organic matter (DOM) composition in SML and subsurface water (SSW) using size exclusion chromatography in a Northern Amazonia rainforest headwater during the dry to wet season transition. During the dry season, we observed higher DOC concentrations with greater DOM compositional variability, characterized by lower humic substance (HS) abundance and elevated contributions of biopolymers (BP), building blocks (BB), and low-molecular-weight neutrals and acids (LMWN, LMWA). River discharge and DOC flux increased in the wet season. However, the overall DOC concentration decreased accompanied by DOM homogenisation, a dominance of HS, and the disappearance of LMWA.

The SML and SSW exhibited similar DOC concentrations but distinct compositional differences, evidenced by divergent HS-DOC relationships and HS nominal molecular weight (M_n) characteristics. In the dry season, high M_n variability in the SML suggested preferential accumulation of higher-molecular-weight HS, which diminished as wet-season conditions stabilized DOM distribution. Enrichment factors (EFs) for all DOM compound groups between the SML and SSW displayed strong temporal variability. These patterns likely reflect shifts in hydrodynamic regimes, terrestrial inputs, and microbial or photochemical processing. Notably, rainfall events did likely not directly trigger EF pulses but indirectly influenced DOM composition from local sources through terrestrial mobilization. Our results demonstrate that tropical river DOM dynamics are fundamentally controlled by seasonal hydrological regimes, with discharge-driven processes exerting stronger influence on molecular composition and vertical heterogeneity (particularly in the SML) than direct rainfall effects. This hydrologic dominance shapes DOM distribution through three interconnected mechanisms: source variability during low-flow periods, transport-mediated homogenisation during high discharge, and in-situ processing that differentially affects boundary layer composition.

Key words: Surface microlayer, headwater river, tropical rainforest, dissolved organic matter, wet season, dry season.

1. Introduction

The interface between the atmosphere and hydrosphere, known as the surface microlayer (SML), covers about 70% of the Earth's surface. The SML is an important biological habitat and a collection point for buoyant particles, and dissolved components from the underlying water [1-5]. Compared to subsurface water (SSW), the SML is subject to a broad set of unique physical and chemical properties [6-8] that are vulnerable to environmental and climatic variations [1]. However, to date, the majority of SML characterizations have been focussed on marine systems with relatively few investigations of freshwater systems [9-11] and a notable paucity in tropical rivers (Raymond et al., 2013). Organic matter compositional difference between SML and SSW have been shown to play a key role in the water-atmosphere transfer of climate active gases including carbon dioxide (CO₂), methane (CH₄) and nitrous oxide (N₂O) in marine systems [3, 12]. However, SML processes are poorly understood and rarely represented in marine and freshwater interactions with the atmosphere in numerical models [6, 13, 14].

Although the hydrodynamic energy of rivers and creeks is generally higher than that of marine systems, several mechanisms can still sustain a discrete microlayer at the air-water interface. In marine systems the accumulation of surfactants, exopolymeric substances, and surface-active organic matter can dampen small-scale turbulence and create surface-tension gradients that stabilise the SML even under moderate flow [15, 16]. Evidence from both natural and engineered freshwater systems further indicates that distinguishable microlayers can persist in reservoirs, and constructed wetland channels where surfactant and organic matter accumulation reduce near-surface turbulence [17]. However, to the best

of our knowledge, no previous studies have explicitly characterised the SML in headwater river systems or explored the potential for distinct SML to form in headwaters.

Material known to accumulate in the SML of marine, lake and wetland waters includes a range of naturally occurring organic matter, such as carbohydrates, proteins, lipids [5] and the key nutrients including nitrogen and phosphorous [18]. The enrichment factor (EF), defined as the ratio of the concentration of a specific substance or property in the SML to its corresponding value in the underlying SSW is a widely utilized metric for assessing the accumulation of substances and the distinct characteristics of the SML relative to the SSW [1, 19-22]. The primary sources of material to the SML are phytoplankton exudates, transported to the surface via rising bubbles and diffusion [23]. Additionally, hydrophilic polysaccharides, high molecular polysaccharides and complex glucans, major excretion productions of phytoplankton, can become enriched in the SML [5]. In rivers, the surfactant compositional variation between the SML and SSW has been shown in estuary of the Delaware Bay and the, Broadkill River [2] , the estuarine of Selangor River [24] and the Tyne Estuary [25]. An investigation of the Guangzhou segment of the Pearl River further confirmed the enrichment of nutrients (nitrogen, and phosphorus), heavy metals (Fe, Mn, Ni, Cr, and Pb), bacteria, and increased chemical oxygen demand [9, 11] in the SML. However, to our best knowledge, the organic matter SML properties in headwater tropical rainforest rivers is unknown.

The characteristics of dissolved organic matter (DOM) in aquatic environments vary depending on its source (terrestrial or aquatic) and diagenetic state [26]. Freshwater, estuarine, and marine ecosystems receive large quantities of dissolved organic carbon (DOC) from terrestrial ecosystems, altering their physical and chemical qualities and affecting their metabolic functioning [27]. Instream DOC mineralisation is a notable source of riverine carbon dioxide (CO₂) emission, particularly in tropical

132 rivers [e.g. 28, 29] with compositional changes of DOM widely observed
 133 using a variety of approaches including coloured and fluorescence DOM
 134 (CDOM and FDOM) techniques [e.g. 30, 31] liquid chromatography
 135 organic carbon and nitrogen detection [22, 32-34], high resolution mass
 136 spectrometry [6, 35] and nuclear magnetic resonance [36, 37].

137
 138 Tropical rivers are a major component of the global biogeochemical
 139 cycling [38], with headwaters estimated to account for 70-80% of the total
 140 river network [39] and connect the terrestrial and aquatic ecosystems as
 141 they are in direct contact with adjacent soils [40, 41]. The transition
 142 between dry and wet periods in these ecosystems can affect the water and
 143 atmospheric composition [42, 43]. Despite their importance, little is known
 144 about the temporal dynamics of DOM. Given the relatively high organic
 145 matter fluxes of these systems [44] this study questioned whether
 146 partitioning between SML and SSW exists in tropical headwaters.
 147 Therefore, this study aims to characterise temporal variations in DOC and
 148 DOM composition during the dry-to-wet season transition of the SML and
 149 SSW in a tropical rainforest headwater catchment within the Iwokrama
 150 Forest, Guyana. Specifically, we:

- 151 □ Assess the temporal variability of DOC and DOM compound groups
 152 during the dry-to-wet season transition, to determine how
 153 hydrological and biogeochemical changes (e.g., hydrological
 154 mobilisation, microbial or photochemical transformation) influence
 155 DOM composition and molecular characteristics.
- 156 □ Examine the relationships between DOC/DOM metrics, rainfall, and
 157 river discharge to identify how hydrological forcing and rainfall
 158 events regulate DOM sources, transport pathways, and
 159 compositional dynamics in tropical headwaters.
- 160 □ Quantify the differences in DOC concentration and DOM
 161 composition between the SML and SSW to evaluate enrichment
 162 processes and compositional differentiation at the air-water
 163 interface.

Through this approach, we explore how tropical headwater systems regulate carbon dynamics at the air-water interface and influence aquatic carbon cycling.

2. Methodology

2.1. Study Area

This study selected a previously characterised headwater of the Essequibo River located in the Iwokrama rainforest (Figure 1) in the deep rainforest interior of Guyana, South America [43-45]. The Iwokrama forest is in the heart of the Guiana Shield part of northern Amazonia, in tropical South America. The forest is bounded and drained by the Essequibo River to the East and the Siparuni River, a tributary of the Essequibo, to the west and north (See Pereira et al., 2014a for more details). Briefly, Iwokrama is located relatively isolated intact rainforest near a transition in the climate regime from the north (coastal) to south (savannah). The coastal region experiences two wet seasons (a primary wet season from May to July and a secondary wet season from December to January) and two dry seasons (a primary dry season centred around October and a secondary dry season around March). In contrast, the southern savannah region has a single wet season from May to August and a long dry season extending from September to March [45, 46]. Blackwater Creek (BC), a second-order headwater of the Essequibo River was chosen to study the temporal variability of riverine DOM concentration and composition in the SML and SSW to further our understanding on a dynamic headwater river systems.

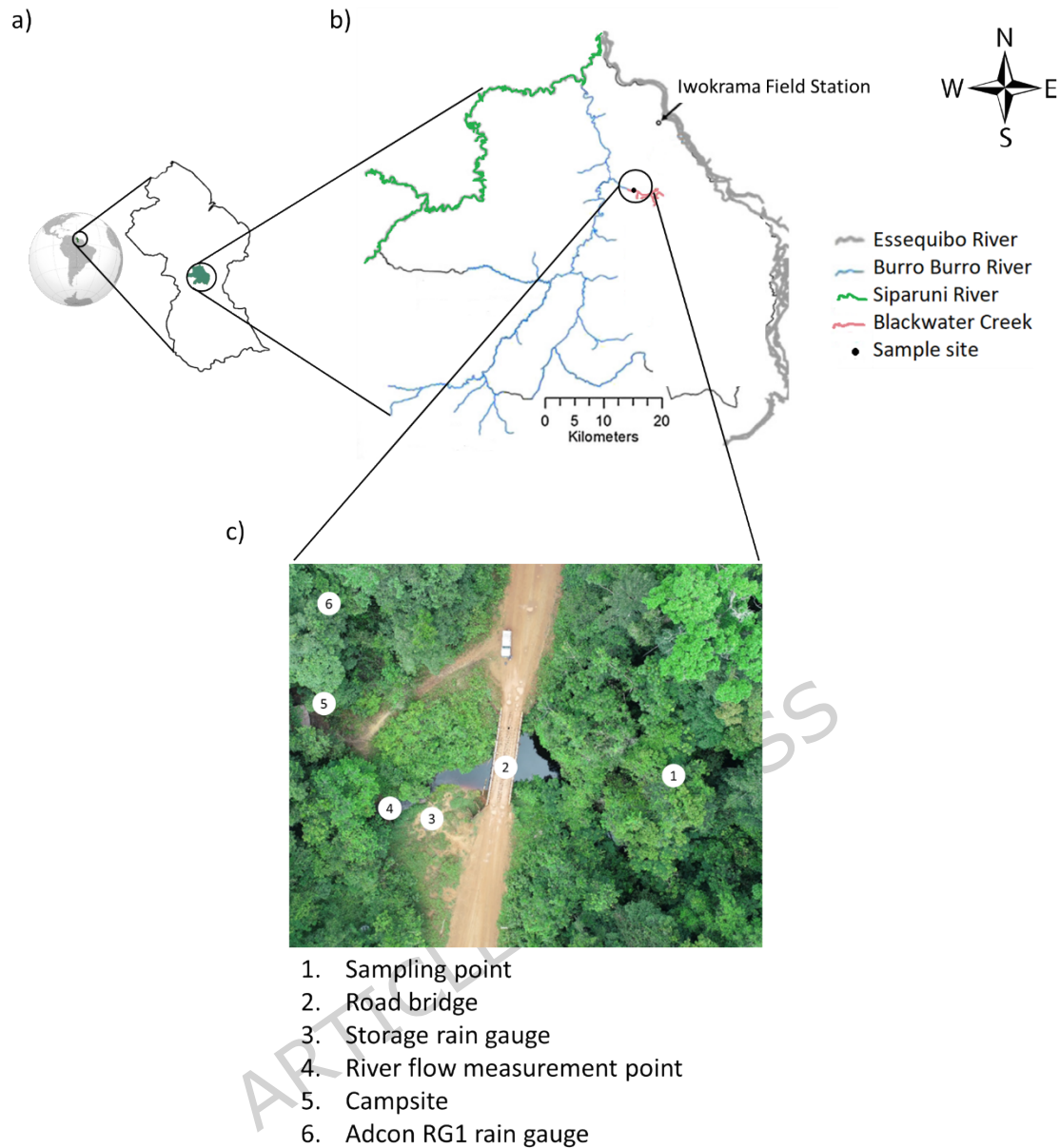


Figure 1: Study site map. The map of (a) Guyana, (b) the Iwokrama rainforest (modified from [45]), and (c) aerial view of Blackwater Creek study site (modified after [43]).

2.2. Hydrometeorological data collection

Rainfall was measured at the site using an Adcon RG1 rain gauge equipped with a 0.2 mm tipping bucket with a 200 cm² diameter from 3rd to 28th May 2019 (no data was recorded in the last 10 days of the study period due to

the rain gauge failure) and a storage rain gauge with a 127 mm diameter placed on the ground was used to record daily rainfall from 14th May to 7th June 2019 [45].

River stage was measured using sealed Solinst Levellogger Edge pressure transducers located in a stilling well recording every 1 minute from 3rd May to 7th June 2019. River stage was corrected for atmospheric pressure changes using a Solinst Barologger. River discharge for the whole study period was calculated from an empirical relationship between the measured discharge and river stage (rating curve) as follows:

$$Q = 2.309 (S - 0.57)^{1.575} \quad (1)$$

where Q is river discharge ($\text{m}^3 \text{s}^{-1}$) and S is the river stage (m). (For further details and complete data set used for rating curves please refer to [43].)

2.3. Sample Collection, Preservation and Analysis

SSW grab samples were collected [47] into 60 ml HDPE bottles from the top 50 cm of the river water column from 4th May until 7th June 2019 during four intensive sampling phases from 4th May 12:00 to 10th May 05:00 (First Phase), 13th May 14:00 to 18th May 05:00 (Second Phase), 21st May 11:00 to 28th May 05:00 (Third Phase) and 31st May 10:00 to 7th June 05:00 (Fourth Phase) 2019. SML samples were collected using a Garrett Screen [48] at the same time as SSW samples. The screen (mesh 16, 0.36 mm wire diameter with an opening of 1.25 mm, a frame width of 1.25 cm) had an effective surface area of 101 cm^2 . A 1.5 m stainless steel rod was attached onto the frame to minimise disturbing the SML. The screen was gently placed on the water's surface allowing it to capture the SML and then withdrawn slowly and drained directly into 60 ml HDPE bottles [49]. These steps were repeated until two sample bottles were filled (3.5 dips per bottle on average). Samples were collected every 6 hours at 05:00, 11:00, 17:00 and 23:00 (baseline samples) to capture diurnal variation and extra water samples were collected every 30 minutes during rainstorm events

in response to observed hydrological changes such as rainfall and/or increased river discharge (rainstorm event samples). In total, 238 SML samples (94 baseline and 144 rainstorm event samples) were collected from BC. The sampling team recorded whether it was raining at the time of each sample collection, categorizing samples into rain event samples (48 samples) collected during rainfall, and dry condition samples (190 samples) collected under non-rainy conditions. The identification of rain event samples was then cross-checked against rainfall data from the Adcon RG1 rain gauge, using a threshold of $>5 \text{ mL min}^{-1}$.

All water samples were collected following standard protocols outlined by previous work for Liquid chromatography-organic carbon detection-organic nitrogen detection (LC-OCD-OND) determination [50, 51]. Briefly, water samples were filtered immediately using pre-combusted GF-F filters (450 °C for 8 h) collected in 60 ml high density polyethylene (HDPE) bottles which were acid-washed (10 % HCl) and rinsed with deionised water (18.2 M $\Omega \text{ cm}^{-1}$, carbon-free) prior to use. All samples were transported to mobile laboratory in the Iwokrama river lodge under dark and cold conditions using a portable chiller (4–6 °C).

2.4. Field analysis and mobile laboratory

DOC analyses were completed on the same day as sample collection using a Sievers M5310C Portable TOC Analyzer, with attached GE Autosampler with a 0.03 to 50 mg L⁻¹ carbon range in the mobile laboratory in the Iwokrama River Lodge. DOC results were within the specification of < 1% RSD precision and $\pm 2\%$ accuracy. Deionised water was used as an analytical blank.

DOC EF were calculated as follows:

$$\text{DOC EF} = \frac{\text{DOC}_{\text{SML}}}{\text{DOC}_{\text{SSW}}} \quad \text{Equation (1)}$$

where DOC_{SML} (mg L⁻¹) is concentration of the substance or property in the SML and DOC_{SSW} (mg L⁻¹) is concentration of the substance or

property in the SSW. EF higher than 1 indicates enrichment of the substance or property in the SML relative to the SSW. EF less than 1 indicates enrichment of the substance or property in the SSW relative to the SML.

2.5. Liquid chromatography-organic carbon detection-organic nitrogen detection (LC-OCD-OND)

A second set of 60 ml HDPE bottles were sealed at the field sites, and then kept at -20 °C until analysed at the Lyell Centre at Heriot-Watt University, UK, for further DOM compositional analysis [34, 51, 52].

The DOM composition was measured using LC-OCD-OND for SML and SSW water samples. LC-OCD-OND is a size exclusion chromatography (SEC) technique, providing quantitative information regarding organic carbon compound groups [53]. LC-OCD-OND allows 1 mL of whole water to be injected onto a size exclusion column (2 mL min⁻¹; HW50S, Tosoh, Japan) with a phosphate buffer (potassium dihydrogen phosphate 1.2 g L⁻¹ plus 2 g L⁻¹ di-sodium hydrogen phosphate dihydrate, pH 6.58) and separated into five DOM compound groups. These include biopolymers (BP; high molecular weight polysaccharides and proteins), humic substances (HS), building blocks (BB; lower molecular weight HS), low molecular weight acids (LMWA), and low molecular weight neutrals (LMWN; amphiphilic/neutral compounds including alcohols, aldehydes, ketones, and amino acids) were measured [32, 53].

LC-OCD-OND can be used to determine the nominal molecular weight of HS (M_n) in natural waters [53], which can describe the apparent size or weight of the HS relative to the known molecular weight of IHSS HA and FA. This technique has been used in study of organic matter in SML and SSW of freshwater or marine systems [44, 54, 55]. The resulting compound groups were identified using detectors for organic carbon (OC), UV-amenable carbon and organic nitrogen (ON) [53]. All peaks were identified

and quantified with bespoke software (Labview, 2013) normalized to International Humic Substances Society (IHSS) humic and fulvic acid (HA and FA, respectively) standards, potassium hydrogen phthalate and potassium nitrate.

EFs were calculated for BP, HS, BB, LMWN, LMWA concentration and M_n following Equation (1). These were denoted as BP EF, HS EF, BB EF, LMWN EF, LMWA EF, and M_n EF, respectively.

2.6. Statistical analysis

All statistical analyses were performed using R software (version 4.3.3) and Microsoft Excel (version 365). Prior to analysis, Rosner's test for outliers was applied to identify and remove extreme values, ensuring the robustness of the results. Group differences were assessed using independent samples t -tests assuming unequal variances, with the t -statistic used to determine statistical significance at a threshold of $\alpha = 0.05$. Specifically, t -tests were used to compare (i) DOC concentrations between SML and SSW, (ii) DOC concentrations and DOM EFs between rain event and dry-period samples, and (iii) DOM compound group EFs (BP, HS, BB, LMWN, and LMWA) between rising and falling river discharge conditions.

To evaluate relationships between variables, linear regression analyses were conducted. These included (i) relationships between HS and DOC concentrations for SML and SSW during the drier (phases 1-2) and wetter (phases 3-4) periods, and (ii) relationships between DOC and other DOM compound groups (BP, BB, LMWN, and LMWA). The slopes and intercepts of regression models were compared using analysis of covariance (ANCOVA) to determine statistically significant differences between groups (e.g. between SML and SSW, and between dry and wet transition periods). The coefficient of variation (CV) was calculated to assess relative variability within each dataset and across sampling phases.

Temporal trends in DOC concentration, HS Mn, and DOM composition were evaluated using the non-parametric Mann-Kendall test, which detects monotonic trends in time-series data without assuming normality. A significance threshold of $\alpha = 0.05$ was applied to all tests.

3. Results

3.1. Medium-term Climate and hydrology

The total monthly rainfall in the study site for May 2019 was 421 mm. The river discharge ranged from 0.05 to 5.59 m³ s⁻¹ and the river water level ranged from 0.66 m to 2.32 m (SD=0.34) ((Figure 2 a and Figure 4 a). The distinction between wet and dry periods in this study follows the climatic characterisation reported elsewhere [43]. Briefly, monthly rainfall data recorded at the Iwokrama Field Station from January 2016 to December 2019 show a bimodal precipitation pattern with two wet and two dry seasons typical of the Guianas region [46]. Based on the Köppen-Geiger system for the Guianas (rainfall in the driest month is ≥ 60 mm or $< [100 \text{ mm} - (\text{mean annual rainfall}/25)]$), 2019 started with a wet season that began in April 2018.[56].

3.2. Temporal dynamics of DOC and DOM composition

3.2.1. Temporal variability of DOC concentration

DOC concentrations ranged from 9.33 to 26.41 mg L⁻¹ (20.01 ± 2.92 mg L⁻¹) for the SSW (Figure 2 c) and from 9.82 to 26.08 mg L⁻¹ (20.19 ± 2.89 mg L⁻¹) for the SML (Figure 2 b) over the study period. The DOC concentration during rainstorm event SML samples (n=144, ranging from 13.87 to 25.28 mg L⁻¹, 20.02 ± 2.91 mg L⁻¹) does not deviate from baseline samples (n=94, ranging from 9.82 to 26.08 mg L⁻¹, 20.36 ± 1.81 mg L⁻¹) (t-test: two-sample assuming unequal variances, t static =-1.08, t critical = 1.66). The enrichment of SML DOC concentration relative to the SSW, EF DOC ranged from 0.78 to 1.33 (1.00 ± 0.04) over the study period

(Figure 2d). The majority of samples (96 % of the total sample set) reported a DOC EF between 0.92 and 1.08 ($1 \pm 2 \times \text{SD} (=0.04)$). As both SML and SSW DOC were normally distributed, t-tests suggest that the SML DOC and SSW DOC are not statistically different ($t_{\text{static}}=0.36$, $t_{\text{critical}}=1.97$). The Mann-Kendall test further indicated a downward temporal trend in DOC concentration for both the SML and SSW ($z = -2.48$ and -2.75 , respectively; $p < 0.05$) (Table S9), suggesting a gradual decrease over the study period.

ARTICLE IN PRESS

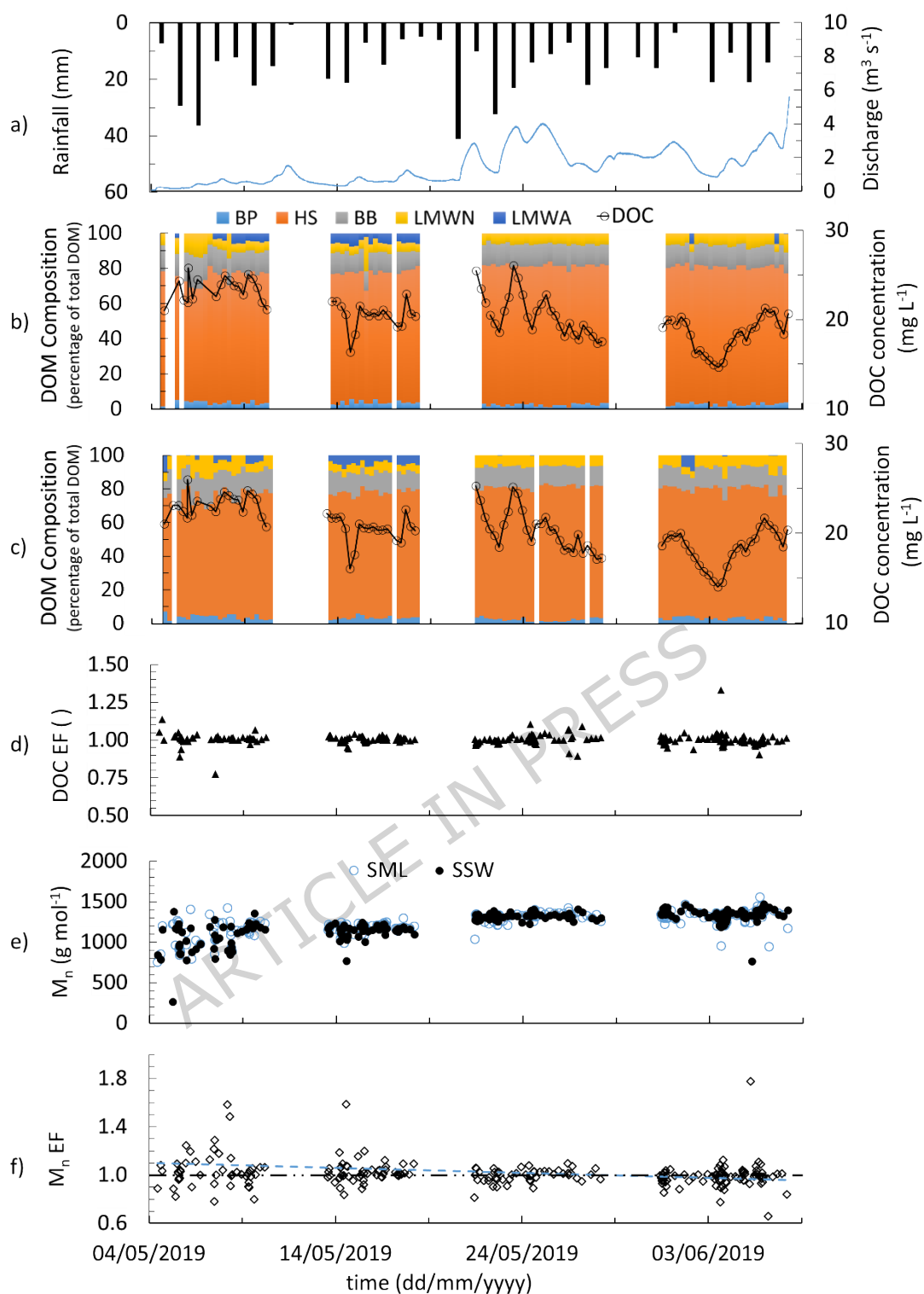


Figure 2: BC daily rainfall (black bar) and river discharge (blue line) (a), temporal variability of the percentage of the total DOM pool and DOC concentration in baseline SML (b) and SSW samples (c), DOC EF (d), M_n of HS in the SML and SSW (e), and the HS M_n EF (f). The black dashed line in (e) shows the general increase of M_n in the SML and SSW. The blue dashed line shows the general trend of M_n EF and the black dashed

line shows EF=1 in (f).

3.2.2. Temporal variability of DOM compound groups

The BP concentration ranged from 0.06 to 1.44 mg L⁻¹ (0.56 ± 0.30 mg L⁻¹) in SML and from 0.02 to 1.44 mg L⁻¹ (0.56 ± 0.29 mg L⁻¹) in the SSW. BP accounted for 2.8 ± 1.1 % of the total DOM present in the SML (0.6 to 5.8 %) (Figure 2 b) and 2.91 ± 1.1 % of the DOM in the SSW (0.5 to 6.7 %) (Figure 2 c). HS, which is the dominant compound group observed, ranged from 3.25 to 20.69 mg L⁻¹ (14.30 ± 3.50 mg L⁻¹) in the SML and from 0.27 to 21.66 mg L⁻¹ (14.08 ± 3.99 mg L⁻¹) in the SSW. Generally, the HS fraction increases in both SML and SSW waters ranging from 54.6 to 89.3 % in the SML ($73.7 \pm 6.3\%$; Figure 2 b) and 54.9 to 84.2 % in the SSW during the study period (73.5 ± 6.0 %; Figure 2 c). The BB concentrations ranged from 0.51 to 4.54 mg l⁻¹ (2.34 ± 0.67 mg L⁻¹) in the SML and from 0.07 to 4.50 mg L⁻¹ (2.31 ± 0.76 mg L⁻¹) in the SSW. The BB accounted for 9.1 to 18.5 % (12.4 ± 1.7 %) of DOM in the SML (Figure 2 b) and 7.2 to 18.7 % (12.1 ± 1.9 %) in the SSW (Figure 2 c). The LMWNs were found at concentrations of 0.08 to 5.09 mg L⁻¹ (1.30 ± 0.63 mg L⁻¹) in the SML and 0.01 to 3.82 mg L⁻¹ (1.29 ± 0.65 mg L⁻¹) in the SSW. The LMWNs contributed 0.0 to 22.0 % (6.6 ± 2.8 %) to the total DOM in the SML (Figure 2 b) and 0.0 to 26.1 % (6.8 ± 3.1 %) in SSW (Figure 2 c). The BP, BB and LMWN overall concentration and contributions to the total DOM pool generally decreased over the study period in both SML and SSW waters. The LMWAs concentration ranged from below detection to 1.48 mg L⁻¹ (0.92 ± 0.45 mg L⁻¹) and 1.59 mg L⁻¹ (0.80 ± 0.47 mg L⁻¹) in the SML and SSW, respectively. When present, LMWAs contributed 0.4 to 7.5 % (4.2 ± 2.2 %) to DOM in SML (Figure 2 b) and 7.2 to 10.2 % (4.9 ± 1.8 %) in SSW (Figure 2 c).

The LMWAs were detected inconsistently during the first phase of the study, appearing in 22 SML and 24 SSW samples (out of 50 total sample pairs). LMWAs were found in 11 SSW samples without corresponding detection in the SML and in 9 SML samples below detection in the SSW.

During the second phase, LMWAs were detected in all waters (100 samples in total). In the third and fourth phases, LMWAs were detected in both the SML and SSW for 5 sample pairs.

The Mann-Kendall trend analysis revealed statistically significant temporal patterns in several DOM compound groups (Table S8). In the SML and SSW, significant increasing trends were observed for HS percentage of total DOM ($z = 4.05$, $p < 0.01$ and $z = 4.27$, $p < 0.01$, respectively), whereas BB and LMWN percentages exhibited significant decreasing trends ($z = -3.07$, $p < 0.01$ and $z = -3.29$, $p < 0.01$, respectively), and LMWN percentage of total DOM ($z = -3.03$, $p < 0.01$, and $z = -3.03$, $p < 0.01$, respectively). BP showed a weak decreasing tendency in the SML ($z = -1.85$, $p = 0.06$) and a significant decline in the SSW ($z = -2.82$, $p < 0.01$), while LMWA showed no significant temporal change ($p > 0.9$) (Table S9).

3.2.3. Variations in HS and molecular characteristics

DOM data from this study were categorized into two groups: phase 1 and 2 (first half of the study period) and phase 3 and 4 (second half of the study period) based on earlier observations of DOM and river discharge by [43]. Notably HS represents a greater proportion of the DOC in the first half of the study compared to the latter half in both the SML and the SSW (Figure 3).

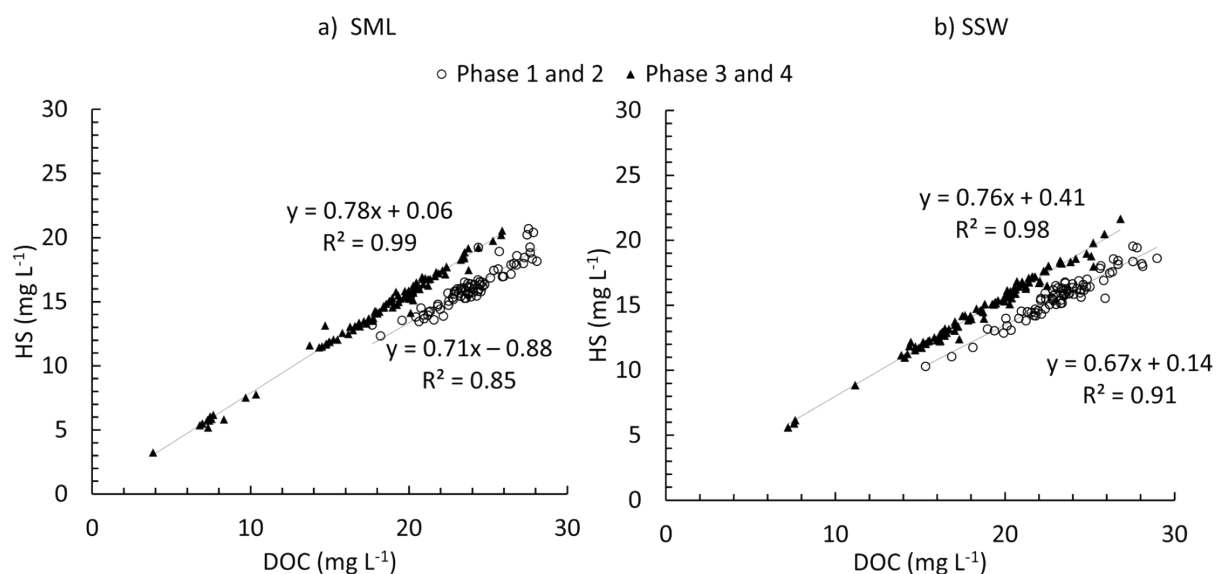


Figure 3: BC HS vs DOC concentration for the SML (a) and SSW (b) in the first (circles) and second (triangles) half of the study period.

Figure 3 further shows that the relationship of HS to the total DOC pool for phases 1 and 2 (first half of the study period and drier) and phases 3 and 4 (second half of the study period and wetter) follow different trends evidenced by two different sets of slopes and intercepts. The HS and DOC concentrations show a strong correlation in SML ($R^2=0.99$, $n=103$, $p < 0.0001$ in phase 1 and 2 and $R^2=0.85$, $n=135$, $p < 0.0001$ in phase 3 and 4) and SSW ($R^2=0.98$, $n=103$, $p < 0.0001$ in phase 1 and 2 and $R^2=0.91$, $n=135$, $p < 0.0001$ in phase 3 and 4). The comparative analysis of the linear regression slopes of HS and DOC relationship for two groups of data (group 1: phase 1 and 2, group 2: phase 3 and 4) suggests a significant but variable relationship between HS and DOC between these two groups (SML: $p < 0.0001$, $\alpha = 0.05$, SSW: $p < 0.0001$, $\alpha = 0.05$) despite the intercept not being significantly different in these two groups (SML: $p = 0.31$, SSW: $p = 0.23$). In addition, the interaction term (i.e. the statistical test of whether the slope of the HS-DOC relationship differs significantly between SML and SSW) suggests statistically significant differences in the second half of the study period ($p = 0.004$, $\alpha = 0.05$). However, no statistically significant difference was observed between the intercepts ($p = 0.21$, $\alpha = 0.05$) and no statistically significant difference was observed

between the intercept and interaction term in the first half of the study period (intercept: $p = 0.84$, $\alpha = 0.05$, interaction term $p = 0.48$, $\alpha = 0.05$). In addition, the linear relationship between DOC and other DOM compound groups (BP, BB, LMWN, and LMWA) were tested. For all groups, the correlations were weak ($R^2 < 0.8$) except for BB in the first half of the study period ($R^2 = 0.86$ for SML and $R^2 = 0.95$ for SSW).

HS M_n increases over the study period (ranges from 747 to 1553 (1236 ± 134) g mol^{-1} in the SSW and from 763 to 1465 (1232 ± 151) g mol^{-1} in the SML (Figure 2 e). In the first phase of the study period, HS M_n has a high SML and SSW variability (CV=15 and 15 % for the first phase, respectively), which decreases during the study period (for example, CV=7 and 7 % for the fourth phase, respectively). The M_n EF ranges from 0.66 to 1.70 (1.01 ± 0.11) with maximum variability in the first phase (CV=14 %, second phase CV=10 %, third phase CV=5 % and fourth phase CV=11 %) (Figure 2 f). The comparison of Humic substances diagram (HS-diagram, the SAC/ OC ratio (aromaticity) of aquatic humic substances plotted against M_n) [53] in different phases shows a gradual shift of the samples to higher molecularity and lower aromaticity from phase 1 to phase 4 (SI section H, Figure S28 to 32).

3.3. SML-SSW Compositional Differences and Enrichment Factors

The EF of the DOM compound groups is used for the compositional comparison of the SML and SSW. The BP EF ranges from 0.41 to 8.03 (1.24 ± 0.99) (Figure 4 b), HS EF ranges from 0.21 to 7.38 (1.16 ± 0.76) (Figure 4 c), BB EF ranges from 0.21 to 7.61 (1.16 ± 0.75) (Figure 4 d), LMWN fraction EF ranges from 0.05 to 5.97 (1.19 ± 0.78) (Figure 4 e) and LMWA fraction EF ranges from 0.09 to 2.63 (1.14 ± 0.43) (Figure 4 f). BP EF shows the maximum variability (CV=80 %) among DOM compound groups (HS EF (CV=66 %, BB EF CV=64 %, LMWN EF CV=66 %, and LMWA 38 %). BP, HS, BB, and LMWN EF are more variable in the second half of the

study period (CV=55, 48, 42, and 58 % in phase 1 and 2 and CV=91, 74, 73, and 70 % in phase 3 and 4, respectively). Weak linear relationships were observed between the EF of all DOM compound groups ($R^2 < 0.7$, $n=238$, $p < 0.0001$), except for BB and HS, which showed a strong correlation ($R^2=0.92$, $n=238$, $p < 0.0001$).

As such, the DOM EFs of these regimes were investigated to assess whether the rising or falling phases exert control over the compositional differences between the SML and SSW. Two categories of water samples collected during rising and falling river discharge in the second half of the study period (as it has distinct rising and falling period) were statistically compared. No statistically significant variation of DOM composition was observed in relation to river discharge trends (t critical = 2.00 and t static = 0.83, 0.82, 0.68, and 0.55 and 1.51 for BP EF, HS EF, BB EF, LMWN EF, and LMWA EF, respectively.).

To evaluate the relationship between rain events and compositional variations in the water column, rain event samples and dry condition samples were compared. Given the normal distribution of the data and the unequal variance between the groups, t -tests were performed. In all cases, the calculated t -statistics were lower than the corresponding critical t -values, indicating no statistically significant compositional variation in the water column between the samples collected during rain events and those collected during dry periods. (t critical = 1.98 and t static = 1.11, 0.94, 1.14, and 1.32 for BP EF, HS EF, BB EF, and LMWN, respectively.). To determine whether high EF values (spikes) are associated with rain events, EF values greater than two were filtered, and the proportion of samples with high EF values collected during rain events was compared to the total number of such samples. The percentages of high EF samples collected during rain events were 21% (6 out of 29 samples) for BP EF, 29% (4 out of 14 samples) for HS EF, 27% (4 out of 15 samples) for BB EF, 20% (4 out of 20 samples) for LMWN EF, and 62% (5 out of 8 samples) for LMWA EF. Since 26% of all samples were collected during rain events, these

percentages are generally close to or below the overall sampling proportion, except for LMWA. This distribution indicates that high EF values occurred in both rain and dry conditions at similar frequencies, suggesting no consistent or systematic increase in EF during rain events. Therefore, the data do not support a strong association between rain conditions and the occurrence of high EF values.

ARTICLE IN PRESS

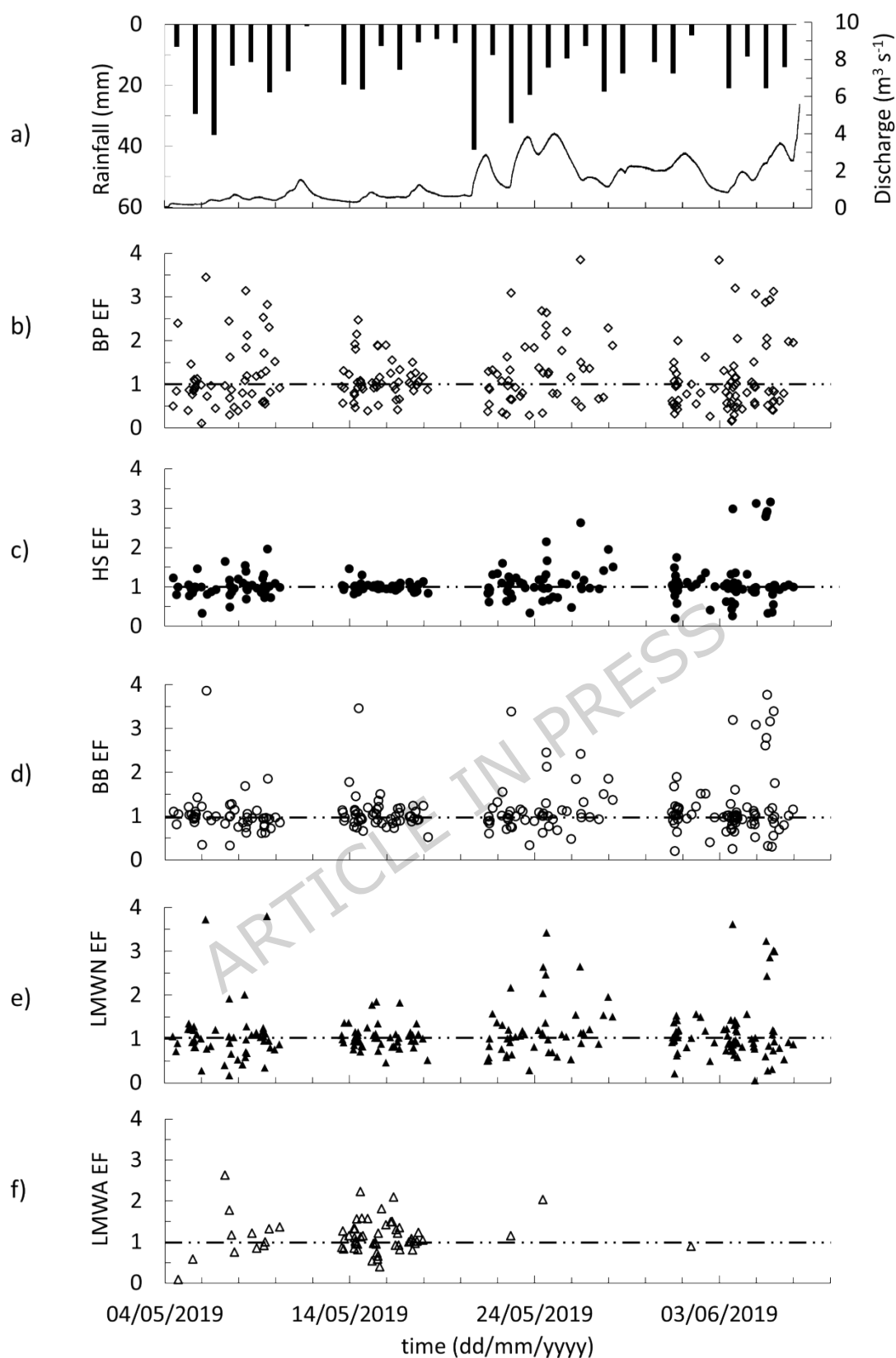


Figure 4: BC daily rainfall (black bar) and river discharge (line) (a) and the temporal variability of EF of DOM compound groups (b) to (f) (dashed lines mark EF=1).

4. Discussion

4.1. Seasonal hydrological connectivity and implications for DOM transport

The dry season typically occurs from February to April, and the wet season from May to August, with transitional periods in between. The present study was conducted in May 2019, during the onset of the major wet season, corresponding to the dry-to-wet transitional period [43]. To briefly place the study period in a broader context, monthly precipitation totals for the month of May at the Iwokrama field station from 2016 to 2019 were 283, 425, 898, and 421 mm, respectively [43]. The 2019 value therefore represents a typical early-wet-season rainfall for the region, neither unusually high nor low relative to interannual variability. This suggests that the catchment was transitioning from dry to wet season during the 35-day sampling period. The Iwokrama headwater catchment exhibits a clear and a rapid hydrological response to rainfall [43], which our study period captures. At the onset of the wet season, increasing rainfall likely mobilises shallow groundwater and near-surface flow paths, producing short-lived discharge peaks as the catchment becomes progressively hydrologically connected. During drier periods, river flow is likely sustained primarily by groundwater inputs, resulting in lower and more stable baseflow. This seasonal alternation between surface-dominated and groundwater-dominated conditions strongly influences DOC-discharge relationships and the type of organic matter exported from the catchment [57].

4.2. DOC and DOM through the dry to wet season transition

In the transition from the dry to wet season, we observed SSW DOC concentrations at the lower range of DOC values previously reported for this river that captured intense rain events [44]. However, here we observe that during the first phase of our study period, where drier conditions prevail, DOC concentrations are generally higher. As river discharge

increases, reflecting wet season conditions, DOC is less concentrated albeit with a greater overall flux that is responsive to fluctuations in river discharge [43]. Interestingly, when the river discharge is at its lowest in the dry season the variability in the composition of DOM in the SSW is at its greatest. At this time, LC-OCD-OND analysis demonstrates that DOM exhibits a lower presence of HS and a higher abundance of BP, BB, LMWN, and LMWA. However, as more water enters the catchment, the range in DOC concentration increases, with very little variability in DOM composition, a notable absence of LMWA, and a greater proportion of HS. The high variability of DOM composition during lower discharge indicates contributions from a more heterogeneous mix of organic matter sources within the catchment. This compositional variability is particularly evident in the HS fraction, with M_n showing higher variability early in the study period before declining over time and shift in the position of the samples in HS-diagram. As the catchment becomes wetter with higher river discharge it is likely that DOM sources become homogenised [43]. That earlier study demonstrated that during the onset of the wet season, DOC concentrations can decline even as total DOM flux increases, due to dilution and the mobilisation of more distal or humic-rich sources. Consistent with this, the observed decline in M_n variability supports the hydrological mobilisation of dry-season DOM sources by rainfall, followed by the increasing influence of a more dominant source, likely high-molecular-weight HS delivered via wet-season dynamics. However, DOM and in particular HS can absorb solar radiation, leading to significant reduction in abundance, and changes in composition and molecular size [58, 59]. Photochemical reactions mainly occur in the photic zone of the upper water column and have been observed to increase the molecular weight of DOM [60], while microbial degradation is ubiquitous and can consume up to 60% of DOM [61]. While HS is traditionally considered chemically stable and resistant to microbial degradation [62] there is evidence that bacteria can utilise DOM as a substrate [63]. The observed changes in HS molecular weight during the study are therefore consistent

with concurrent photochemical activity and microbial reworking processes acting on DOM within the water column.

4.3. SML and SSW Compositional Differences

We observe that turbulent river flow homogenises the water column in terms of DOC concentration between the SML and the SSW (DOC EF CV=10 %). The observation that these compound groups are not uniformly distributed between SML and SSW likely indicate a change in either the hydrodynamic regime of the river system, a change in the supply of organic matter to the river, compositional variation of the compound groups, or a change in the degradation pathway or rate of organic matter in the river.

The high temporal variability of EFs for all DOM compound groups demonstrates the dynamic nature of a headwater tropical river. The changing pattern of DOM compound enrichments in the SML throughout our time series is notable. The variability of EFs for BP, HS, BB, and LMWN is greater in the wet transition period with BP and LMWN compounds more frequently observed to fluctuate between depleted to enriched in the SML (Figure 4 b to e).

The weak EF relationships observed for LMWAs, LMWNs, and BPs suggests that these compound groups migrate independently between the SML and SSW. This may suggest that they are derived from different sources or are subjected to differing transformation process. It may also suggest that the chemical composition of these compound groups have notable differences in their relative buoyancy. Intriguingly the observed relationship with HS and BB EFs suggests these DOM compound groups may be coupled together when transported in the either the SML or SSW.

The significantly different slope and intercept of the relationship between HS and DOC in the SML and SSW, indicates compositional differences of HS further supported by M_n dynamics. The EFs demonstrate a higher variability early in the study period indicating preferential accumulation

of high-molecular-weight HS in the SML at this time. Towards the wet-season phase, HS variability decreases coincident with more uniform SML-SSW composition. Combined this may suggest that the supply, processing and/or migration of HS between the SML and SSW are in a quasi-steady state.

Our results show no immediate or consistent association between individual rain events and high EF values, indicating that direct rainfall does not lead to an EF pulse. Thus, the observed EF pulses may result from complex, rainfall-initiated processes or instream autochthonous processes rather allochthonous supply or direct rain effects. This is consistent with the idea that discrete and frequent rain events, such as those associated with tropical rainforests, deliver organic substances with variable buoyancy or surface activity potential to the river, as proposed for the Delaware basin [2]. While differentiating individual mechanisms of SML enrichments between organic matter supply and degradation is challenging due to intertwined and competing processes, the rising trend of higher molecular weight humic substances combined with a reduction in SML enrichment over our study period does suggest a change in source composition. Whether this is reflective of the other components of the DOM pool is unknown. The absence of LMWA in the second half of study may suggest reactions with humic substances in the SML generating volatile organic compounds [64]. The stabilization of HS EFs in the second phase, when LMWA was consistently present, further highlights the linkage between LMWA and HS in driving SML-SSW compositional differences. Alternatively, the increasing variability in the EFs of BP and LMWN coupled with the notable absence of LMWA in the wet transition period may indicate an increased microbial presence and activity in the SML [9, 49, 65]. Assuming that the compounds are predominantly derived from microbial sources, the absence of acids may be a result of higher demand than supply for this compound group as observed in microbial incubation systems [66].

5. Implications

In the paucity of freshwater studies, we note that marine systems have been shown to have SML enrichments of DOM in upwelling regions likely derived from autochthonous microbial release of DOM as a response to light exposure in this environment [67]. High-resolution observations of DOM in the coastal and open ocean have demonstrated that increasing wind speeds, solar radiation and photochemical degradation lower SML enrichments of organic material [20, 25]. However, organic enrichments within the SML can persist under high turbulence conditions [68] with bubbles in particular enriching the microlayer further [2]. Additionally, the presence of surfactants and humic substances in the SML may attenuate turbulence [69] with reductions in the exchange of gases including oxygen [70] and CO₂ [3, 12]. Importantly, the variable suppression of gas exchange at similar concentrations of surfactants in the SML suggests organic composition has a notable impact. However, whether these mechanisms are directly comparable to headwater river systems remains unknown [2, 67, 68]

Our study reveals compositional variation in the water column, even when DOC concentrations remain similar. The interplay between these compositional DOM changes demonstrates that rivers are never truly well-mixed with the surface microlayer a distinct chemical layer even in headwater river systems. The dynamic nature of the SML at the water-atmosphere interface likely contributes to highly variable gas exchange rates, similar to observations in marine environments [3, 12]. However, the uncertainty surrounding riverine greenhouse gas outgassing highlights the need for research across various scales of river catchments. In particular, mechanisms driving water column mixing in small headwaters may differ fundamentally from those in larger downstream systems. Expanding such studies in tropical rivers and other aquatic systems will enhance our understanding of the SML's role in global biogeochemical cycles.

704

705 **Funding**

706

707 British Geological Survey, the Natural Environmental Research Council
708 (Scholarship GA/18S/023), the Iwokrama International Centre for Rain
709 Forest Conservation and Development in Georgetown, Guyana, and
710 European Union's Horizon 2020 research and innovation programme
711 under grant agreement No 949495 (BOOGIE).

ARTICLE IN PRESS

References

1. Hardy, J.T., *The sea surface microlayer: biology, chemistry and anthropogenic enrichment*. Progress in Oceanography, 1982. **11**(4): p. 307–328.
2. Burdette, T.C., et al., *Organic Signatures of Surfactants and Organic Molecules in Surface Microlayer and Subsurface Water of Delaware Bay*. ACS Earth and Space Chemistry, 2022. **6**(12): p. 2929–2943.
3. Pereira, R., K. Schneider-Zapp, and R. Upstill-Goddard, *Surfactant control of gas transfer velocity along an offshore coastal transect: results from a laboratory gas exchange tank*. Biogeosciences, 2016. **13**(13): p. 3981–3989.
4. Södergren, A., *Role of aquatic surface microlayer in the dynamics of nutrients and organic compounds in lakes, with implications for their ecotones*. Nutrient Dynamics and Retention in Land/Water Ecotones of Lowland, Temperate Lakes and Rivers, 1993: p. 217–225.
5. Wurl, O., et al., *Formation and global distribution of sea-surface microlayers*. Biogeosciences, 2011. **8**(1): p. 121–135.
6. Lechtenfeld, O.J., et al., *The influence of salinity on the molecular and optical properties of surface microlayers in a karstic estuary*. Marine Chemistry, 2013. **150**: p. 25–38.
7. Wu, M.-h., et al., *Semivolatile organic compounds in surface microlayer and subsurface water of Dianshan Lake, Shanghai, China: implications for accumulation and interrelationship*. Environmental Science and Pollution Research, 2017. **24**(7): p. 6572–6580.
8. Wurl, O. and J.P. Obbard, *A review of pollutants in the sea-surface microlayer (SML): a unique habitat for marine organisms*. Marine pollution bulletin, 2004. **48**(11-12): p. 1016–1030.
9. Liu, Q., et al., *Comparison of the water quality of the surface microlayer and subsurface water in the Guangzhou segment of the Pearl River, China*. Journal of Geographical Sciences, 2014. **24**(3): p. 475–491.
10. Meyers, P.A. and O.E. Kawka, *Fractionation of hydrophobic organic materials in surface microlayers*. Journal of Great Lakes Research, 1982. **8**(2): p. 288–298.
11. Yu, J., et al., *Study on water quality and genotoxicity of surface microlayer and subsurface water in Guangzhou section of Pearl River*. Environmental monitoring and assessment, 2011. **174**(1): p. 681–692.
12. Pereira, R., et al., *Reduced air-sea CO₂ exchange in the Atlantic Ocean due to biological surfactants*. Nature Geoscience, 2018: p. 1.
13. Engel, A., et al., *The ocean's vital skin: Toward an integrated understanding of the sea surface microlayer*. Frontiers in Marine Science, 2017. **4**: p. 262783.
14. Raymond, P.A., et al., *Global carbon dioxide emissions from inland waters*. Nature, 2013. **503**(7476): p. 355.
15. Jenkinson, I.R., et al., *Biological modification of mechanical properties of the sea surface microlayer, influencing waves, ripples, foam and air-sea fluxes*. Elem Sci Anth, 2018. **6**: p. 26.
16. Barthelmeß, T. and A. Engel, *How biogenic polymers control surfactant dynamics in the surface microlayer: insights from a coastal Baltic Sea study*. Biogeosciences Discussions, 2022. **2022**: p. 1–42.
17. Rippey, M.A., et al., *Microlayer enrichment in natural treatment systems: linking the surface microlayer to urban water quality*. Wiley Interdisciplinary Reviews: Water, 2016. **3**(2): p. 269–281.
18. Hillbricht-Ilkowska, A. and I. Kostrzevska-Szlakowska, *Surface microlayer in*

- lakes of different trophic status: nutrients concentration and accumulation. Polish Journal of Ecology, 2004. **52**(4): p. 461-478.
19. Elzerman, A.W. and D.E. Armstrong, *Enrichment of Zn, Cd, Pb, and Cu in the surface microlayer of Lakes Michigan, Ontario, and Mendota 1*. Limnology and Oceanography, 1979. **24**(1): p. 133-144.
 20. Mustaffa, N.I.H., et al., *High-resolution observations on enrichment processes in the sea-surface microlayer*. Scientific reports, 2018. **8**(1): p. 13122.
 21. van Pinxteren, M., et al., *The influence of environmental drivers on the enrichment of organic carbon in the sea surface microlayer and in submicron aerosol particles-measurements from the Atlantic Ocean*. Elementa: Science of the Anthropocene, 2017. **5**.
 22. Triesch, N., et al., *Sea spray aerosol chamber study on selective transfer and enrichment of free and combined amino acids*. ACS Earth and Space Chemistry, 2021. **5**(6): p. 1564-1574.
 23. Žutić, V., et al., *Surfactant production by marine phytoplankton*. Marine Chemistry, 1981. **10**(6): p. 505-520.
 24. Alsalahi, M.A., et al., *Distribution of surfactants along the estuarine area of Selangor River, Malaysia*. Marine pollution bulletin, 2014. **80**(1-2): p. 344-350.
 25. Rickard, P.C., G. Uher, and R.C. Upstill-Goddard, *Photo-Reactivity of Surfactants in the Sea-Surface Microlayer and Subsurface Water of the Tyne Estuary, UK*. Geophysical Research Letters, 2022. **49**(4): p. e2021GL095469.
 26. Helms, J.R., et al., *Absorption spectral slopes and slope ratios as indicators of molecular weight, source, and photobleaching of chromophoric dissolved organic matter*. Limnology and Oceanography, 2008. **53**(3): p. 955-969.
 27. Lennon, J.T., et al., *Relative importance of CO₂ recycling and CH₄ pathways in lake food webs along a dissolved organic carbon gradient*. Limnology and Oceanography, 2006. **51**(4): p. 1602-1613.
 28. Richey, J.E., et al., *Outgassing from Amazonian rivers and wetlands as a large tropical source of atmospheric CO₂*. Nature, 2002. **416**(6881): p. 617-620.
 29. Davidson, E.A., et al., *Dissolved CO₂ in small catchment streams of eastern Amazonia: A minor pathway of terrestrial carbon loss*. Journal of Geophysical Research: Biogeosciences, 2010. **115**(G4).
 30. Spencer, R.G., K.D. Butler, and G.R. Aiken, *Dissolved organic carbon and chromophoric dissolved organic matter properties of rivers in the USA*. Journal of Geophysical Research: Biogeosciences, 2012. **117**(G3).
 31. Carter, H.T., et al., *Freshwater DOM quantity and quality from a two-component model of UV absorbance*. Water research, 2012. **46**(14): p. 4532-4542.
 32. Pereira, R., et al., *Investigating the role of hydrological connectivity on the processing of organic carbon in tropical aquatic ecosystems*. Frontiers in Earth Science, 2024. **11**: p. 1250889.
 33. Van Pinxteren, M., et al., *The influence of environmental drivers on the enrichment of organic carbon in the sea surface microlayer and in submicron aerosol particles-measurements from the Atlantic Ocean*. Elem Sci Anth, 2017. **5**: p. 35.
 34. Aukes, P.J. and S.L. Schiff, *Composition Wheels: Visualizing dissolved organic matter using common composition metrics across a variety of Canadian ecozones*. Plos one, 2021. **16**(7): p. e0253972.
 35. Dittmar, T., et al., *Tracing terrigenous dissolved organic matter and its photochemical decay in the ocean by using liquid chromatography/mass*

- spectrometry. *Marine Chemistry*, 2007. **107**(3): p. 378-387.
36. Li, S., et al., *Dearomatization drives complexity generation in freshwater organic matter*. *Nature*, 2024. **628**(8009): p. 776-781.
 37. Vemulapalli, S.P.B., C. Griesinger, and T. Dittmar, *A fast and efficient tool for the structural characterization of marine dissolved organic matter: Nonuniform sampling 2D COSY NMR*. *Limnology and Oceanography: Methods*, 2023. **21**(7): p. 401-413.
 38. Huang, T.-H., et al., *Fluvial carbon fluxes in tropical rivers*. *Current Opinion in Environmental Sustainability*, 2012. **4**(2): p. 162-169.
 39. Gomi, T., R.C. Sidle, and J.S. Richardson, *Understanding processes and downstream linkages of headwater systems: headwaters differ from downstream reaches by their close coupling to hillslope processes, more temporal and spatial variation, and their need for different means of protection from land use*. *BioScience*, 2002. **52**(10): p. 905-916.
 40. Argerich, A., et al., *Comprehensive multiyear carbon budget of a temperate headwater stream*. *Journal of Geophysical Research: Biogeosciences*, 2016. **121**(5): p. 1306-1315.
 41. Benstead, J.P. and D.S. Leigh, *An expanded role for river networks*. *Nature Geoscience*, 2012. **5**(10): p. 678-679.
 42. Bela, M., et al., *Ozone production and transport over the Amazon Basin during the dry-to-wet and wet-to-dry transition seasons*. *Atmospheric Chemistry and Physics*, 2015. **15**(2): p. 757-782.
 43. Norouzi, S., et al., *Dissolved organic matter quantity and quality response of tropical rainforest headwater rivers to the transition from dry to wet season*. *Scientific Reports*, 2024. **14**(1): p. 3270.
 44. Pereira, R., et al., *Mobilization of optically invisible dissolved organic matter in response to rainstorm events in a tropical forest headwater river*. *Geophysical Research Letters*, 2014. **41**(4): p. 1202-1208.
 45. Pereira, R., et al., *Seasonal patterns of rainfall and river isotopic chemistry in northern Amazonia (Guyana): From the headwater to the regional scale*. *Journal of South American Earth Sciences*, 2014. **52**: p. 108-118.
 46. Bovolo, C.I., et al., *Fine-scale regional climate patterns in the Guianas, tropical South America, based on observations and reanalysis data*. *International Journal of climatology*, 2012. **32**(11): p. 1665-1689.
 47. Facchi, A., C. Gandolfi, and M. Whelan, *A comparison of river water quality sampling methodologies under highly variable load conditions*. *Chemosphere*, 2007. **66**(4): p. 746-756.
 48. Garrett, W.D., *Collection of slick-forming materials from the sea surface*. *Limnology and Oceanography*, 1965. **10**(4): p. 602-605.
 49. Cunliffe, M., et al., *Sea surface microlayers: A unified physicochemical and biological perspective of the air-ocean interface*. *Progress in Oceanography*, 2013. **109**: p. 104-116.
 50. Aukes, P.J.K., *Use of liquid chromatography-Organic carbon detection to characterize dissolved organic matter from a variety of environments*. 2012, University of Waterloo.
 51. Heinz, M., et al., *Comparison of organic matter composition in agricultural versus forest affected headwaters with special emphasis on organic nitrogen*. *Environmental science & technology*, 2015. **49**(4): p. 2081-2090.
 52. Fonvielle, J.A., et al., *Assessment of sample freezing as a preservation technique for analysing the molecular composition of dissolved organic matter in aquatic systems*. *RSC advances*, 2023. **13**(35): p. 24594-24603.
 53. Huber, S.A., et al., *Characterisation of aquatic humic and non-humic matter with size-exclusion chromatography-organic carbon detection-organic nitrogen detection (LC-OCD-OND)*. *Water research*, 2011. **45**(2): p. 879-

- 873 885.
- 874 54. van Pinxteren, M., et al., *Marine organic matter in the remote environment*
- 875 *of the Cape Verde islands—an introduction and overview to the MarParCloud*
- 876 *campaign*. Atmospheric Chemistry and Physics, 2020. **20**(11): p. 6921–
- 877 6951.
- 878 55. Wang, X.-X., et al., *Characterization of algal organic matter as precursors*
- 879 *for carbonaceous and nitrogenous disinfection byproducts formation:*
- 880 *comparison with natural organic matter*. Journal of Environmental
- 881 Management, 2021. **282**: p. 111951.
- 882 56. Peel, M.C., B.L. Finlayson, and T.A. McMahon, *Updated world map of the*
- 883 *Köppen-Geiger climate classification*. 2007.
- 884 57. Norouzi, S., *Constraining the global climate-active gases flux between*
- 885 *atmospheric and water reservoirs*, in *Energy, Geoscience, Infrastructure and*
- 886 *Society*. 2023, Heriot-Watt University: Edinburgh, Scotland.
- 887 58. Cory, R.M., et al., *Sunlight controls water column processing of carbon in*
- 888 *arctic fresh waters*. Science, 2014. **345**(6199): p. 925–928.
- 889 59. Kellerman, A.M., et al., *Chemodiversity of dissolved organic matter in lakes*
- 890 *driven by climate and hydrology*. Nature communications, 2014. **5**(1): p.
- 891 3804.
- 892 60. Spray, J.F., et al., *Unravelling Light and Microbial Activity as Drivers of*
- 893 *Organic Matter Transformations in Tropical Headwater Rivers*.
- 894 Biogeosciences Discussions, 2021. **2021**: p. 1–26.
- 895 61. Hur, J., M.-H. Park, and M.A. Schlautman, *Microbial transformation of*
- 896 *dissolved leaf litter organic matter and its effects on selected organic matter*
- 897 *operational descriptors*. Environmental science & technology, 2009. **43**(7):
- 898 p. 2315–2321.
- 899 62. Allard, B., et al., *Degradation of humic substances by UV irradiation*.
- 900 Environment International, 1994. **20**(1): p. 97–101.
- 901 63. Lipczynska-Kochany, E., *Effect of climate change on humic substances and*
- 902 *associated impacts on the quality of surface water and groundwater: A*
- 903 *review*. Science of the total environment, 2018. **640**: p. 1548–1565.
- 904 64. Stirchak, L.T., et al., *Differences in photosensitized release of VOCs from*
- 905 *illuminated seawater versus freshwater surfaces*. ACS Earth and Space
- 906 Chemistry, 2021. **5**(9): p. 2233–2242.
- 907 65. Cunliffe, M., et al., *Dissolved organic carbon and bacterial populations in the*
- 908 *gelatinous surface microlayer of a Norwegian fjord mesocosm*. FEMS
- 909 microbiology letters, 2009. **299**(2): p. 248–254.
- 910 66. Shi, X., et al., *Microbial stratification and DOM removal in drinking water*
- 911 *biofilters: Implications for enhanced performance*. Water Research, 2024.
- 912 **262**: p. 122053.
- 913 67. Galgani, L. and A. Engel, *Changes in optical characteristics of surface*
- 914 *microlayers hint to photochemically and microbially mediated DOM*
- 915 *turnover in the upwelling region off the coast of Peru*. Biogeosciences, 2016.
- 916 **13**(8): p. 2453–2473.
- 917 68. Sabbaghzadeh, B., et al., *The Atlantic Ocean surface microlayer from 50 N*
- 918 *to 50 S is ubiquitously enriched in surfactants at wind speeds up to 13 m s⁻¹*.
- 919 Geophysical Research Letters, 2017. **44**(6): p. 2852–2858.
- 920 69. Esters, L., et al., *Turbulence scaling comparisons in the ocean surface*
- 921 *boundary layer*. Journal of Geophysical Research: Oceans, 2018. **123**(3): p.
- 922 2172–2191.
- 923 70. Goldman, J.C., M.R. Dennett, and N.M. Frew, *Surfactant effects on air-sea*
- 924 *gas exchange under turbulent conditions*. Deep Sea Research Part A.
- 925 Oceanographic Research Papers, 1988. **35**(12): p. 1953–1970.
- 926

Acknowledgement

This manuscript is based upon research funded by the British Geological Survey and the Natural Environmental Research Council (Scholarship GA/18S/023), and the Iwokrama International Centre for Rain Forest Conservation and Development in Georgetown, Guyana. Ryan Pereira acknowledges support from the European Union's Horizon 2020 research and innovation programme under grant agreement No 949495 (BOOGIE).

Authors' Contribution Statement

S. Norouzi (SN) led the writing of the manuscript. SN interpreted the results with the help of R. Pereira (RP), T. Wagner (TW), and A. Macdonald (AMM). SN, J. Bischoff (JB1), J. Brasche (JB2), S. Trojahn (ST), J. Spray (JS) and RP collected water samples on the field trip. SN, JB2, ST, and JS ran field measurements. SN, ST, JB1, JS, and Walter Hill (WH) performed the analytic calculations of LC-OCD-OND. SN calculated rainfall, river flux and discharge data. JB1, RP, and ST ran mobile lab experiments. JS collected hydrological data. RP supervised the field trip and the findings of this work. SN, TW, AMM, JB1, JB2, ST, JS, and RP provided critical feedback on the manuscript.

Data Availability Statement

The data utilized in this research study is available as supplemental material documents within this manuscript. Furthermore, these data is deposited in Mendeley repository ([here](#)) with the title of this manuscript and will be published upon acceptance of this manuscript for publication. For any further queries regarding the dataset, please contact the corresponding authors.

Competing Interests Statement

The author(s) declare no competing interests.

Figure Legends

Figure 1: Study site map. The map of (a) Guyana, (b) the Iwokrama rainforest (modified from Pereira et al. 2014), and (c) arial view of Blackwater Creek study site (modified after Norouzi et al. 2024).

Figure 2: BC daily rainfall (black bar) and river discharge (blue line) (a), temporal variability of the percentage of the total DOM pool and DOC concentration in baseline SML (b) and SSW samples (c), DOC EF (d), Mn of HS in the SML and SSW (e), and the HS Mn EF (f). The black dashed line in (e) shows the general increase of Mn in the SML and SSW. The blue dashed line shows the general trend of Mn EF and the black dashed line shows EF=1 in (f).

Figure 3: BC HS vs DOC concentration for the SML (a) and SSW (b) in the first (circles) and second (triangles) half of the study period.

Figure 4: BC daily rainfall (black bar) and river discharge (line) (a) and the temporal variability of EF of DOM compound groups (b) to (f) (dashed lines mark EF=1).

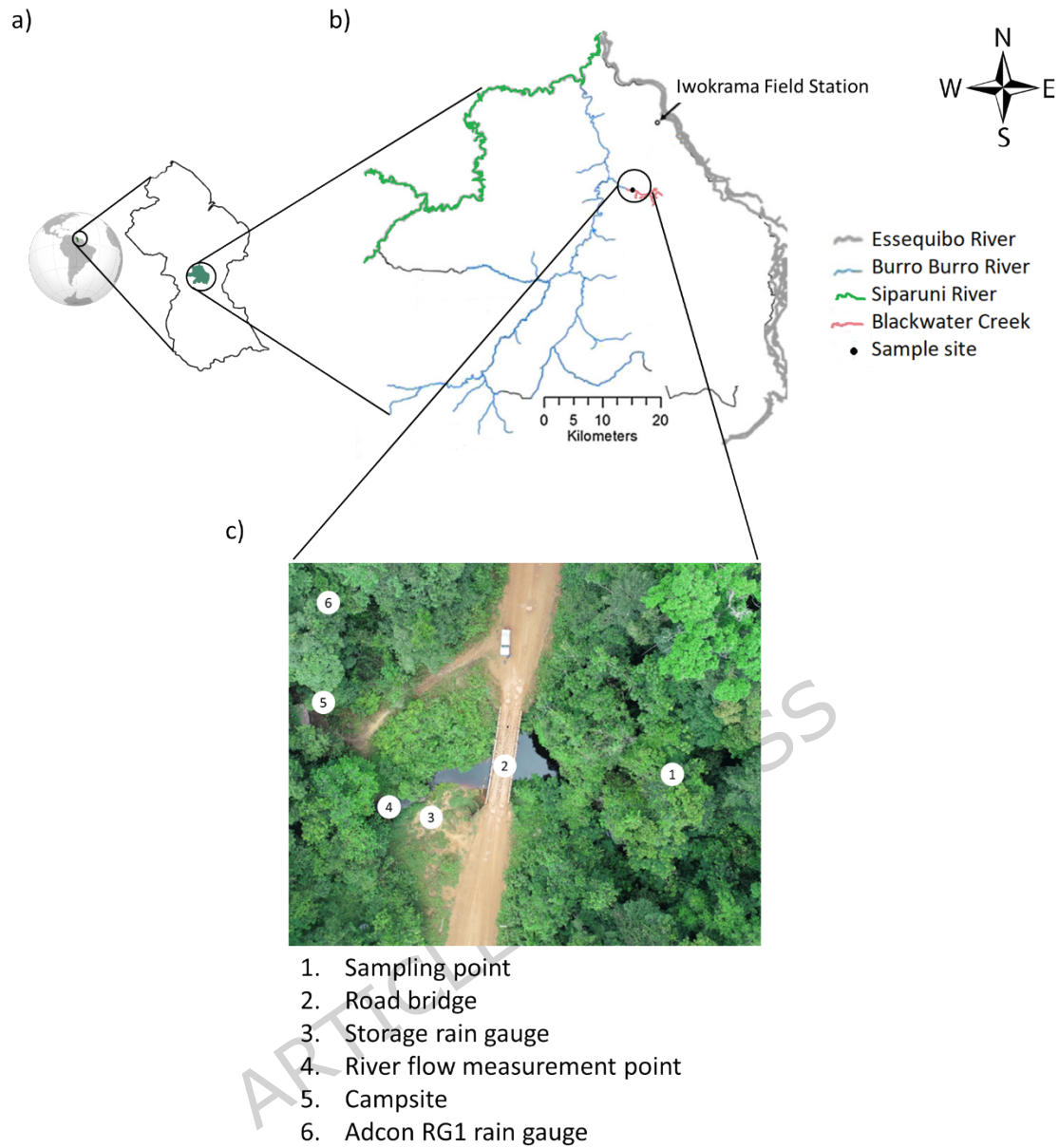
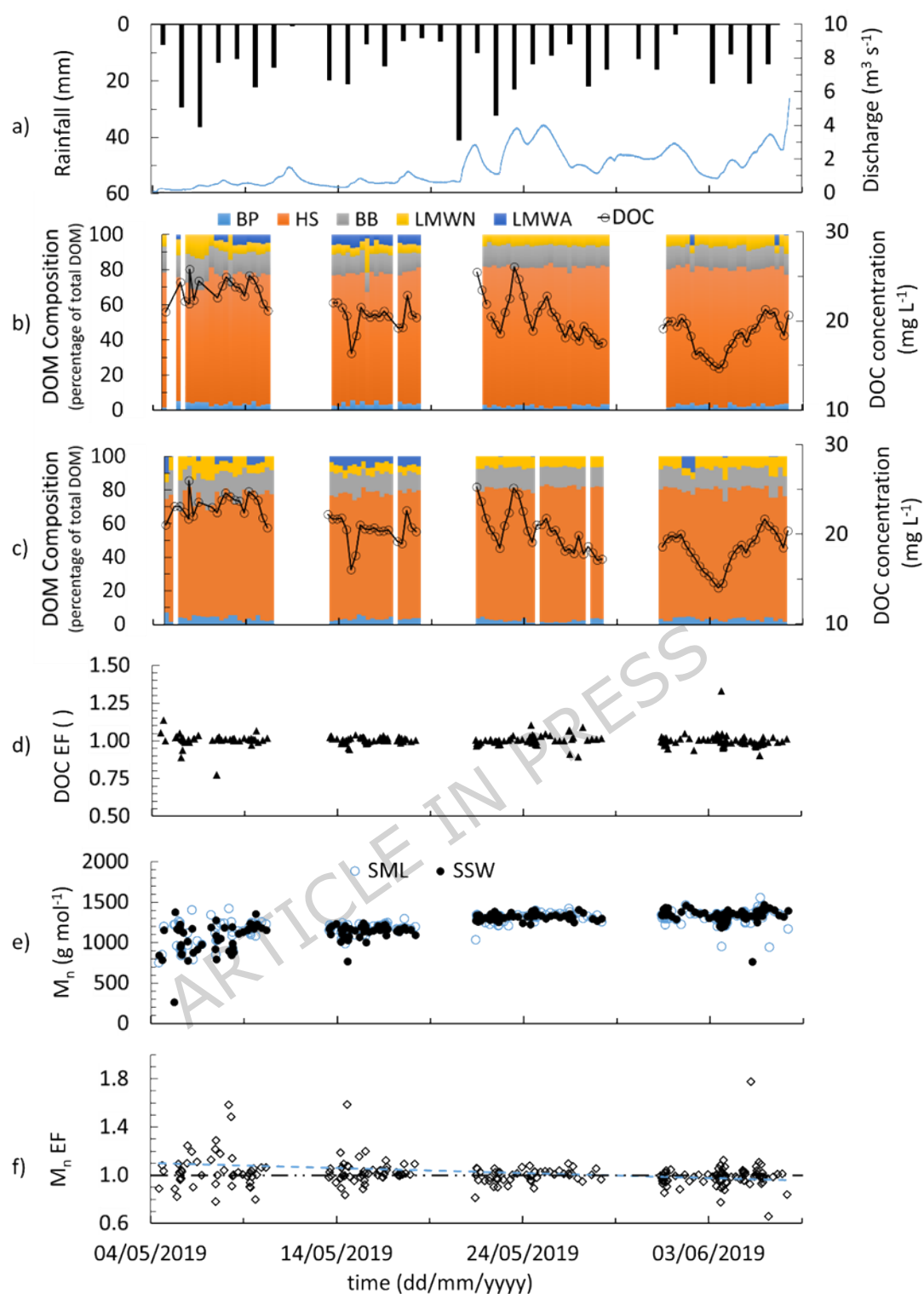


Figure 1: Study site map. The map of (a) Guyana, (b) the Iwokrama rainforest (modified from [45]), and (c) aerial view of Blackwater Creek study site (modified after [43]).



F Figure 2: BC daily rainfall (black bar) and river discharge (blue line) (a), temporal variability of the percentage of the total DOM pool and DOC concentration in baseline SML (b) and SSW samples (c), DOC EF (d), M_n of HS in the SML and SSW (e), and the HS M_n EF (f). The black dashed line in (e) shows the general increase of M_n in the SML and SSW. The blue dashed line shows the general trend of M_n EF and the black dashed

line shows $EF=1$ in (f).

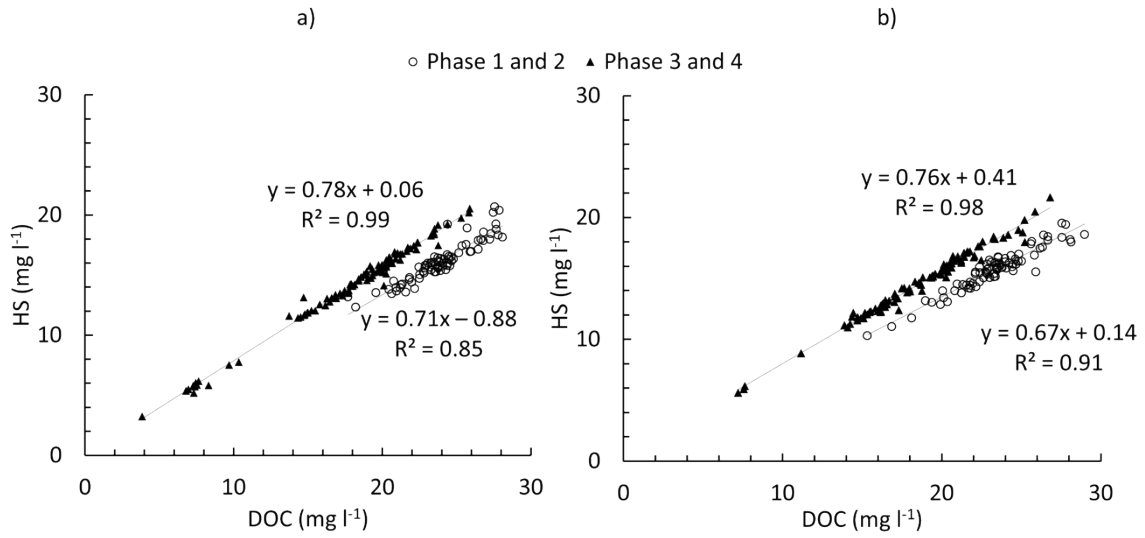


Figure 3: BC HS vs DOC concentration for the SML (a) and SSW (b) in the first (circles) and second (triangles) half of the study period.

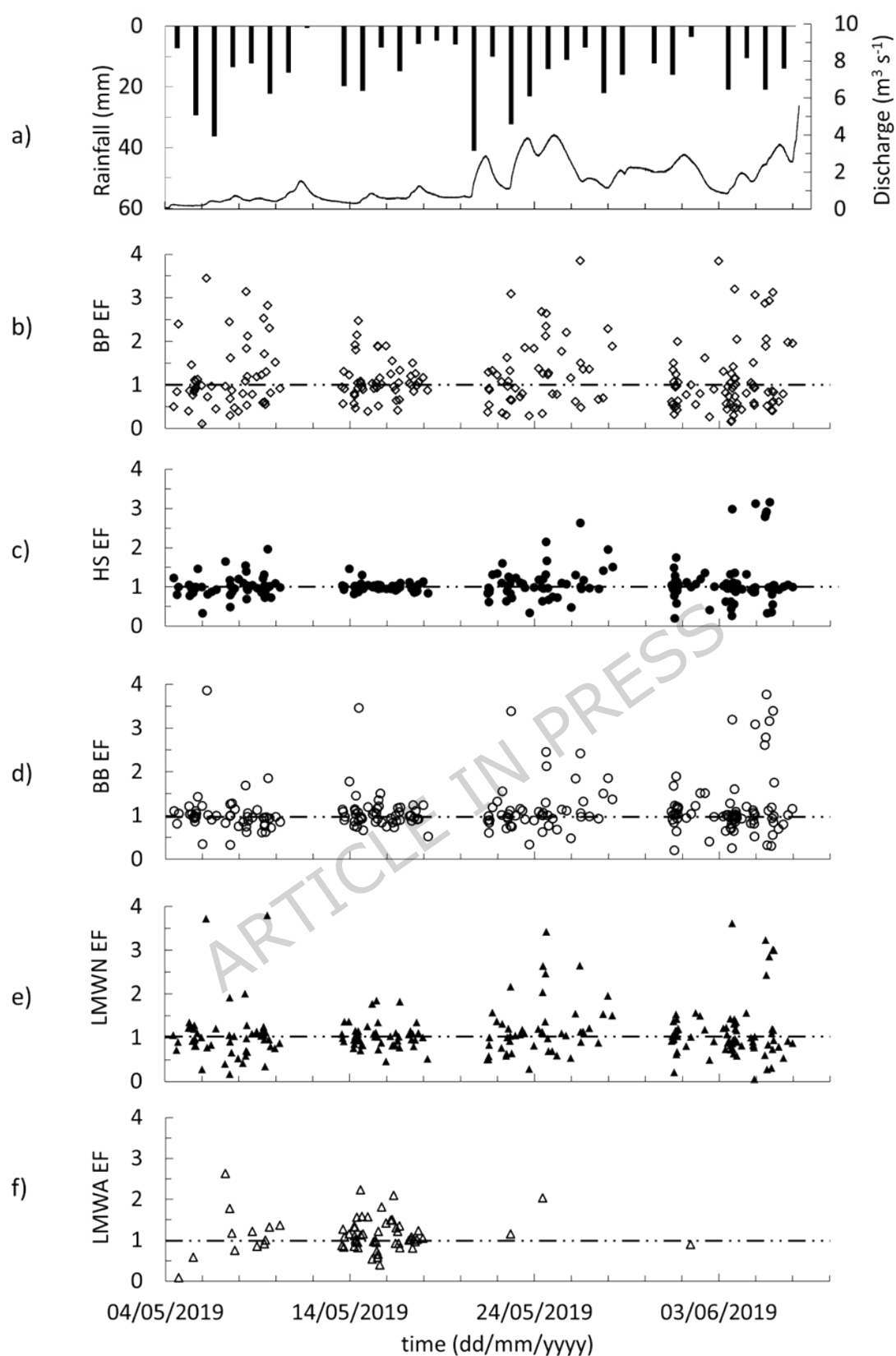


Figure 4: BC daily rainfall (black bar) and river discharge (line) (a) and the temporal variability of EF of DOM compound groups (b) to (f) (dashed lines mark $EF=1$).