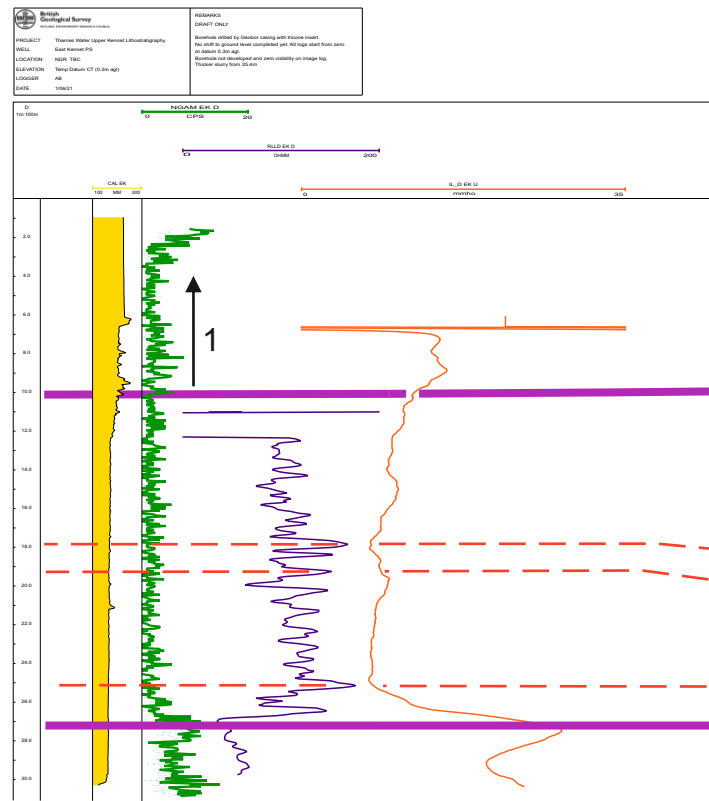
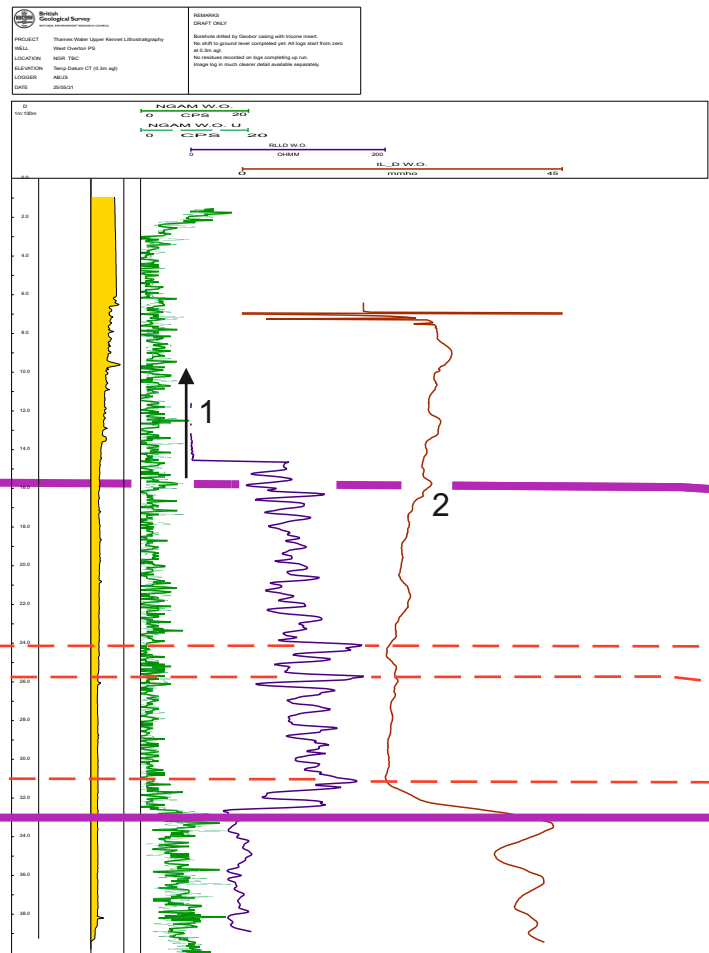


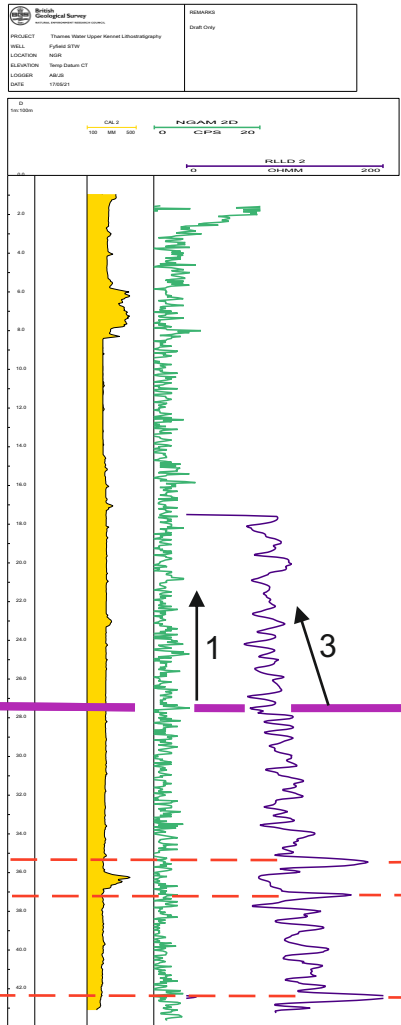
EAST KENNET



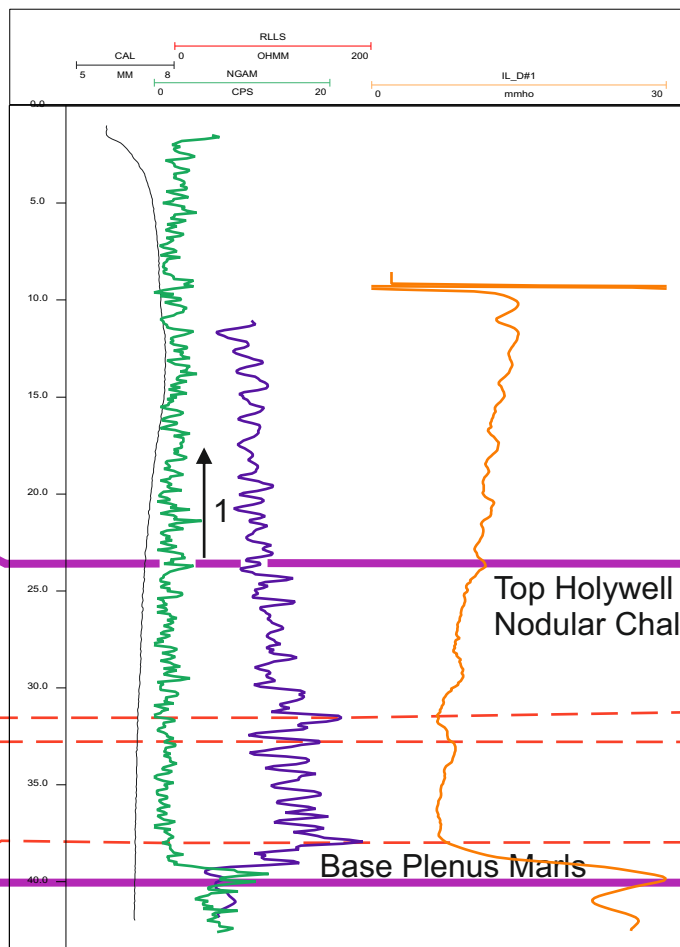
WEST OVERTON



FYFIELD

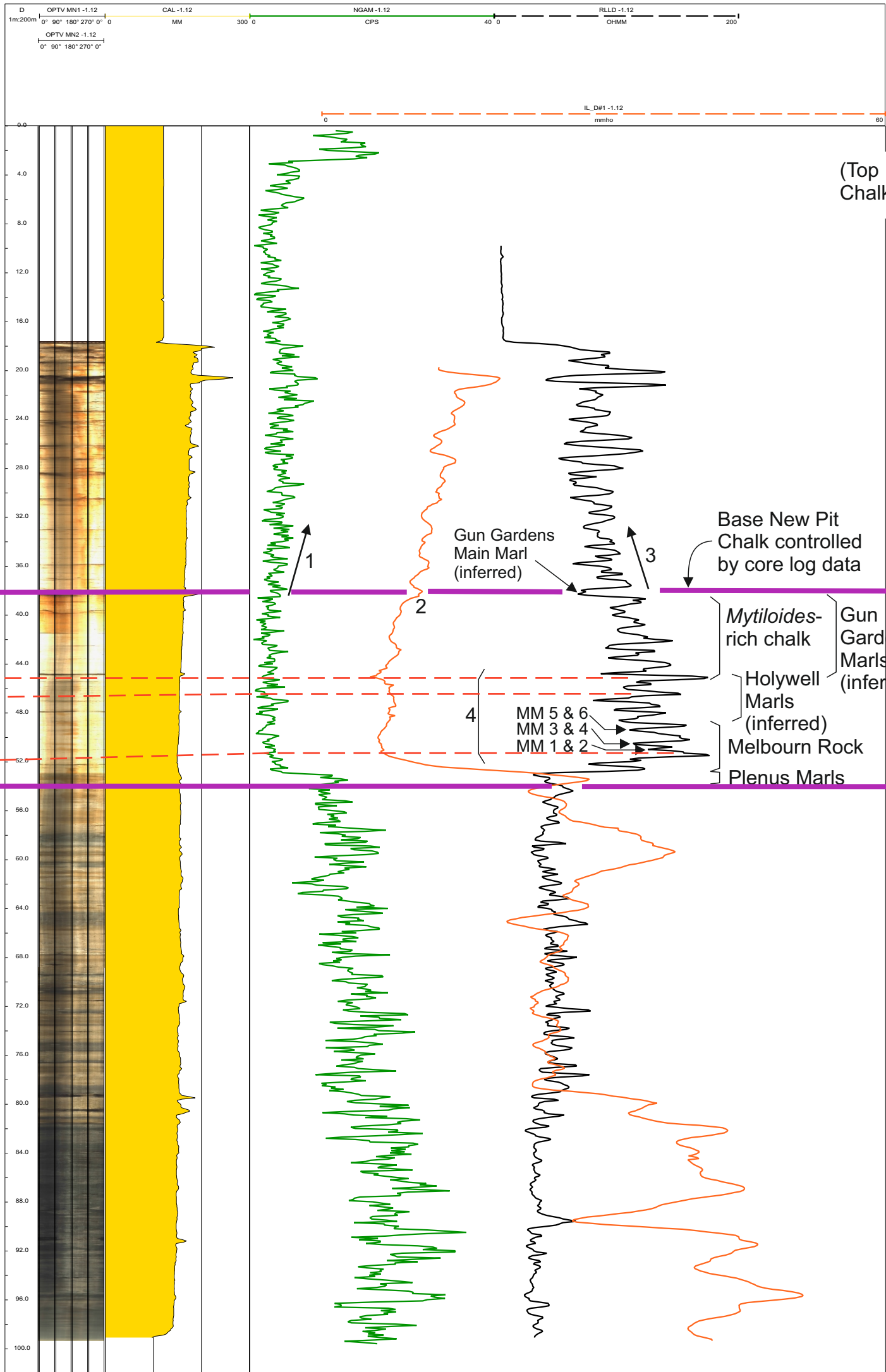


MANTON



MARLBOROUGH, RIVER KENNET

PROJECT	Thames Water Upper Kennet Lithostratigraphy	REMARKS	Updated Draft (removed depth markers on OPTV images and checked shift correct on all logs) Temporary Datum (Geobond casing top) 1.12m agl Logs have been shifted so depths start at apparent ground level Induction logs run down at 5m and up at 7m to compare
WELL	Marlborough STW		
LOCATION	NGM 100		
ELEVATION	Temp Datum CT		
LOGGER	ABIUS		
DATE	05/05/21		



STRATIGRAPHY

LEWES NODULAR CHALK
NEW PIT CHALK
HOLYWELL NODULAR CHALK
ZIG ZAG CHALK
WEST MELBURY MARLY CHALK

Geophysical log features used for correlation:

1= Increasing marl content / more frequent high amplitude gamma inflections reflecting increased marl content

2= Distinctive inflection in induction log

3= Fall in resistivity log values

4= Distinctive patterns of geophysical log inflections matched between boreholes

NB: Core log data controls the position of lithostratigraphical boundaries in the Marlborough (River Kennet) Borehole

Key:

MM= Meads Marls