 British Geological Survey NATURAL ENVIRONMENT RESEARCH COUNCIL		REMARKS
PROJECT	Thames Water Upper Kennet Lithostratigraphy	Updated Draft (removed depth markers on OPTV images and checked shift correct on all logs) Temporary Datum (GeoborS casing top) 1.12m agl Logs have been shifted so depths start at apparent ground level Induction logs run down at 5mpm and up at 7mpm to compare
WELL	Marlborough STW	
LOCATION	NGR tbc	
ELEVATION	Temp Datum CT	
LOGGER	AB/JS	
DATE	05/05/21	

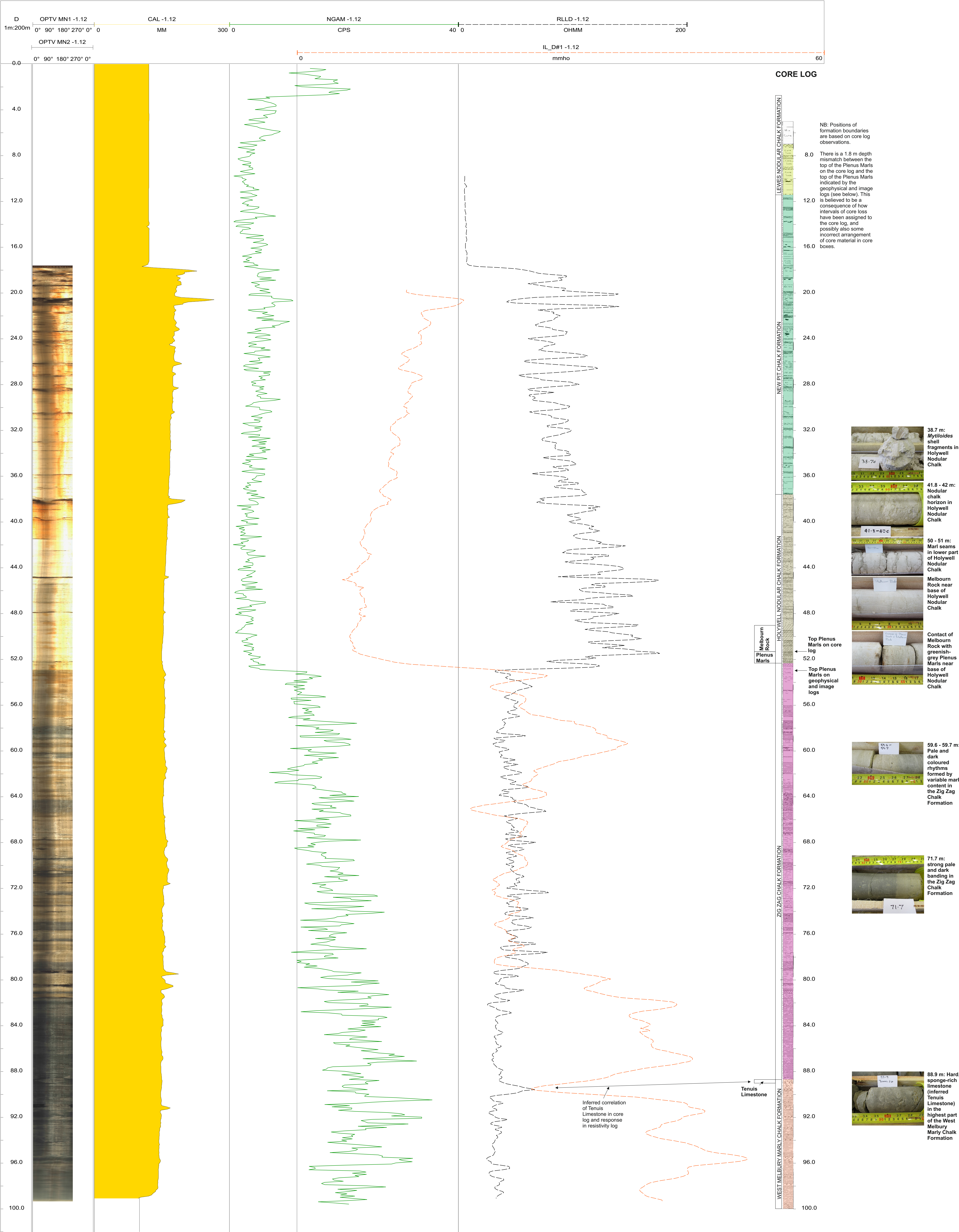


Figure 2. Geophysical and image log data for the River Kennet Borehole and relationship of these to core log data