

# A socio-material analysis of rural water supply performance in Africa

IAH Congress, Davos  
10<sup>th</sup> September 2024

DONALD JOHN MACALLISTER, L. WHALEY; D. NEDAW, S. KEBEDE, Y. TADESSE, E. MWATHUNGA, T. MKANDAWIRE,  
P. MAKULUNI, C. SHABA, S. BANDA, J. OKULLO, M. OWOR,, H. FALLAS, F. CLEVER, A.M. MACDONALD,  
DONMAC@BGS.AC.UK



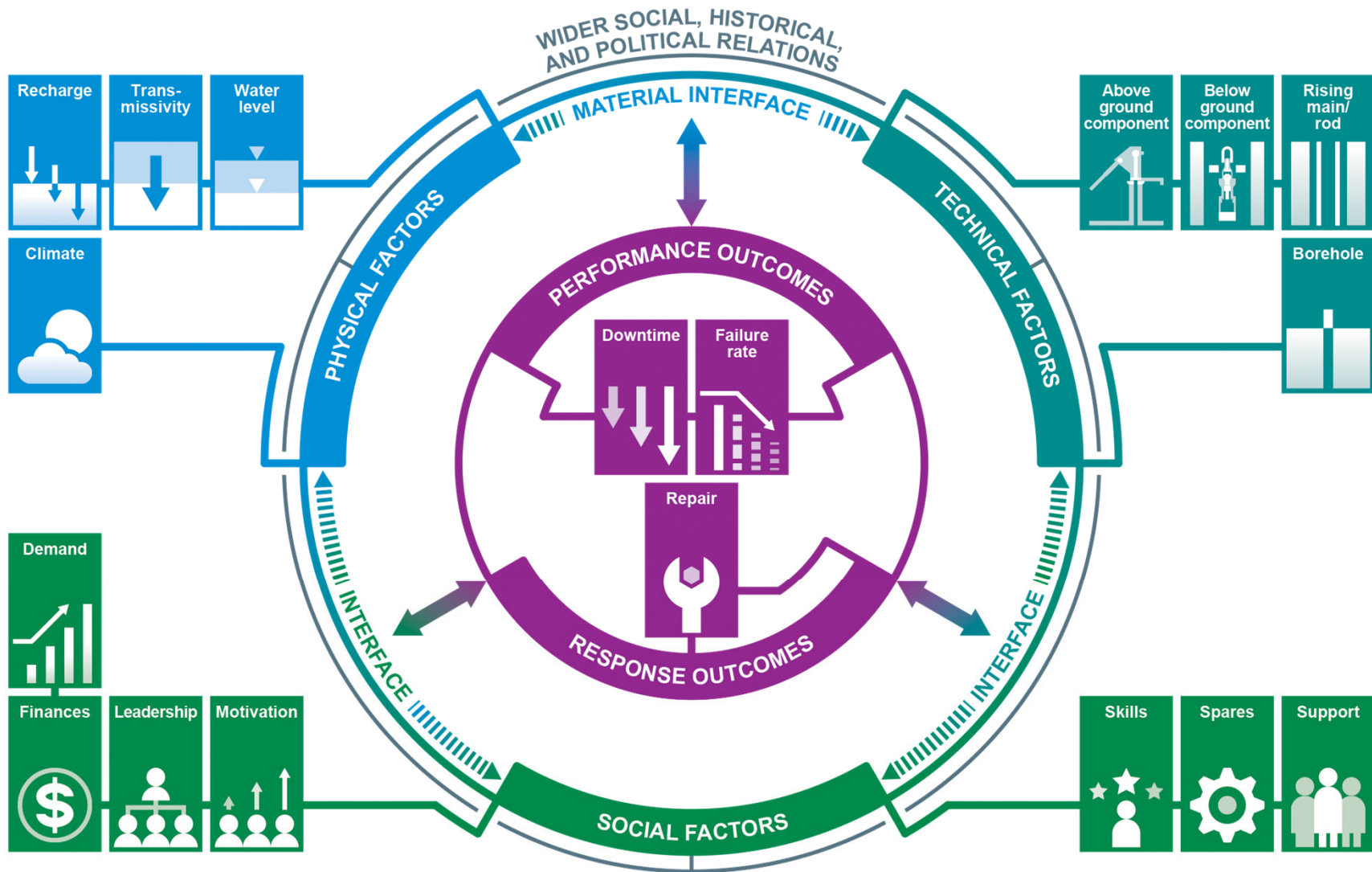


# Hidden Crisis: unravelling failures for future success

- Handpumps (HP) are widespread, c.200 million people use c.0.5 to 1.5 million HPs in SSA.  
(MacArthur, 2015, Foster et al., 2019, Danert, 2022).
- Millions will continue to rely on HPs in future.
- HPs can be a resilient form of water supply.
- 15 – 40% of rural water supplies are non-functional at any time.
- Interdisciplinary research in Ethiopia, Malawi, Uganda to better understand:
  - HP functionality status.
  - *Relationship between underlying socio-material factors and HP performance.*

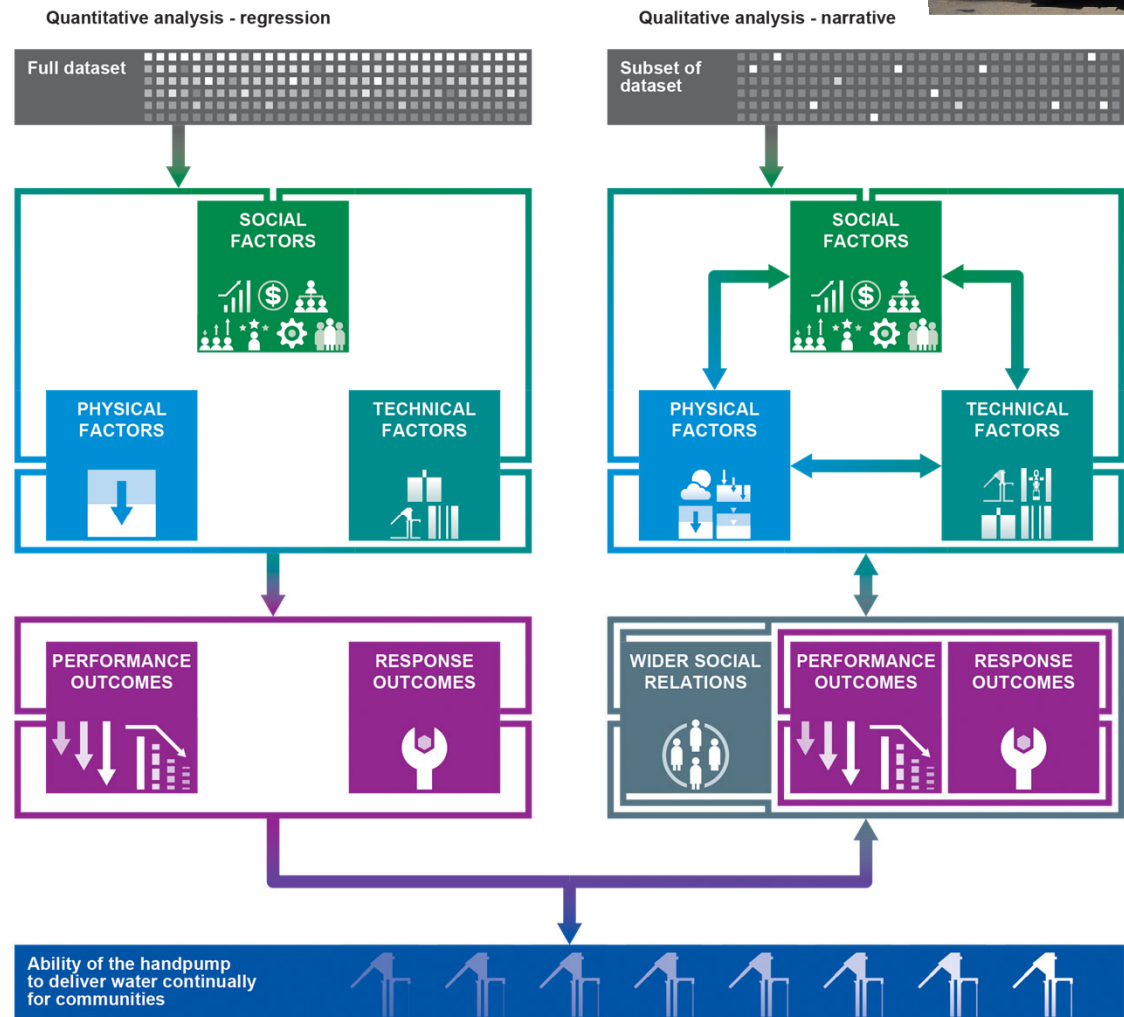


# The socio-material interface



# Investigating the socio-material interface

- Interdisciplinary fieldwork at 150 HPs in three countries.
- Quantitative: Logistic, ordinal, and multinomial regression.
- Qualitative: Small sub-set of sites selected for in-depth qualitative analysis.

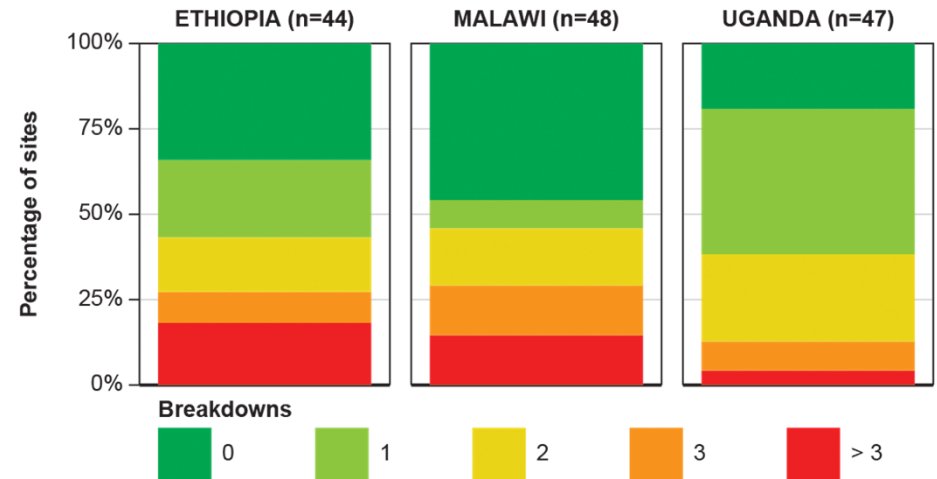




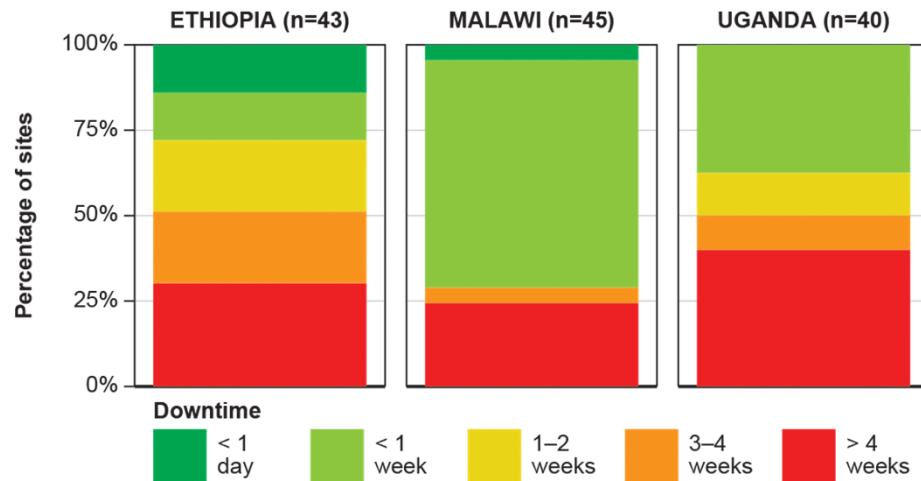
# Handpump borehole performance

- Up to two breakdowns per year is most common, more is rare.
- Highest proportion of HPs with > 3 breakdowns and > 3 weeks previous and cumulative downtime in Ethiopia.
- Highest proportion of HPs with previous and cumulative downtimes < 1 week in Malawi.

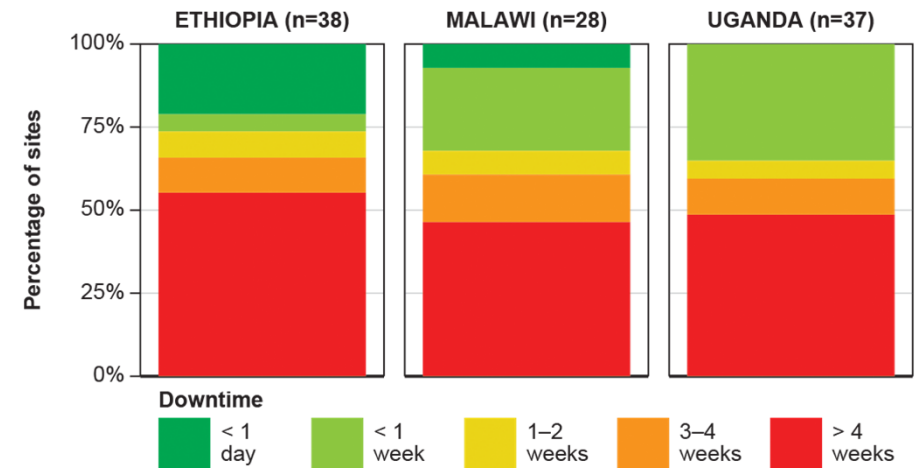
Cumulative number of breakdowns in last year



Duration of previous downtime

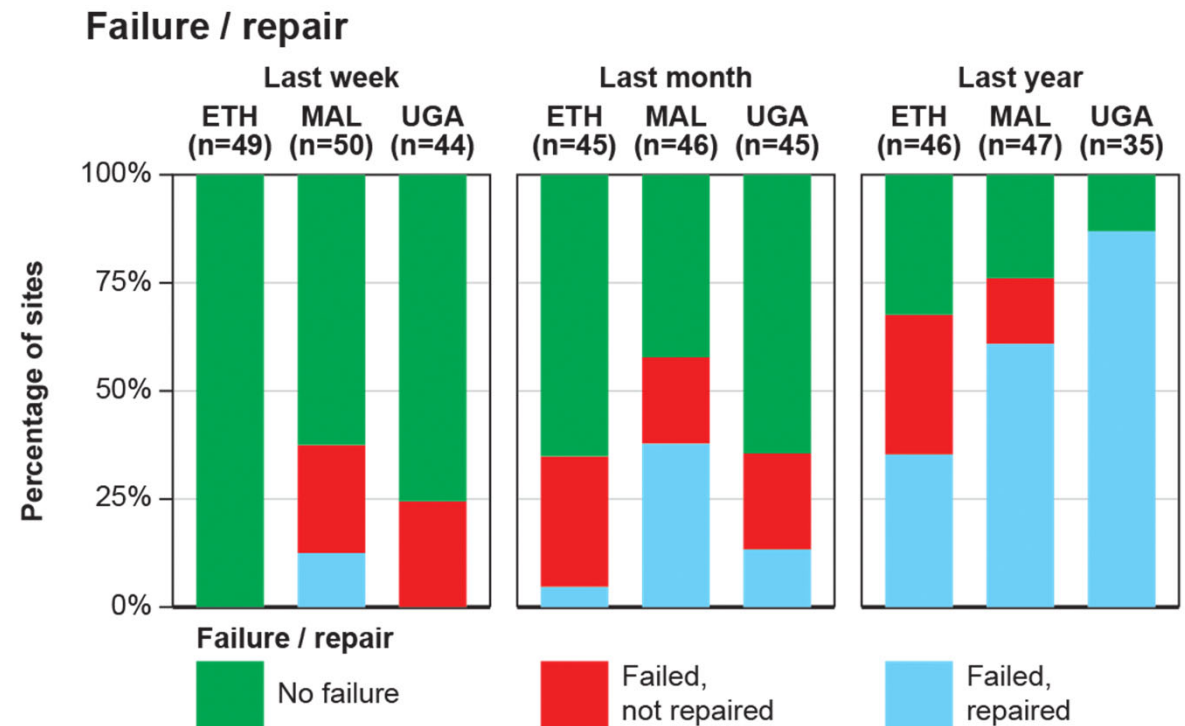


Cumulative downtime in last year



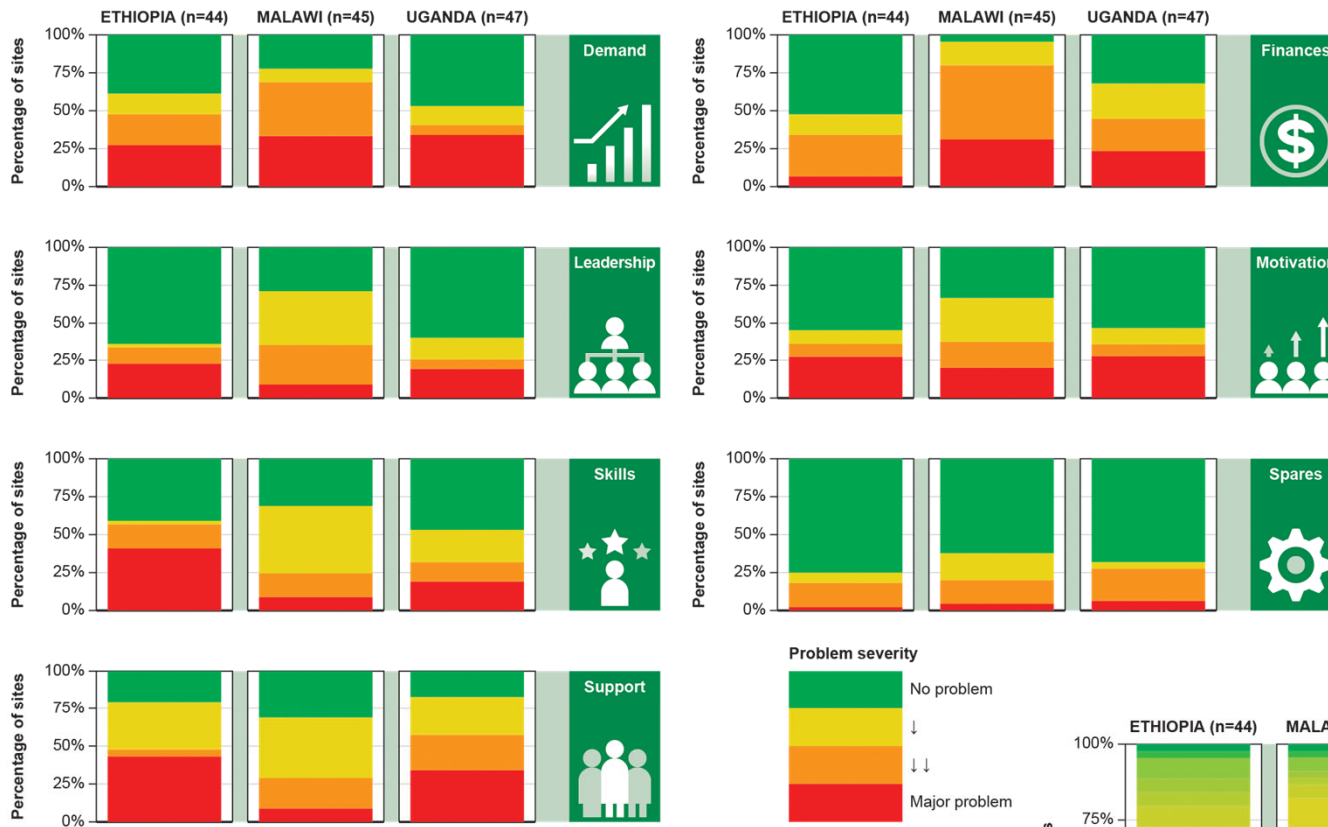
# Repair of handpump boreholes

- Malawi experienced quickest repair times (12% in one week, 38% within a month).
- Repairs least likely within a year in Ethiopia (35% needed repair only 51% repaired).
- In Uganda 87% of HPs that needed repair were repaired within a year.

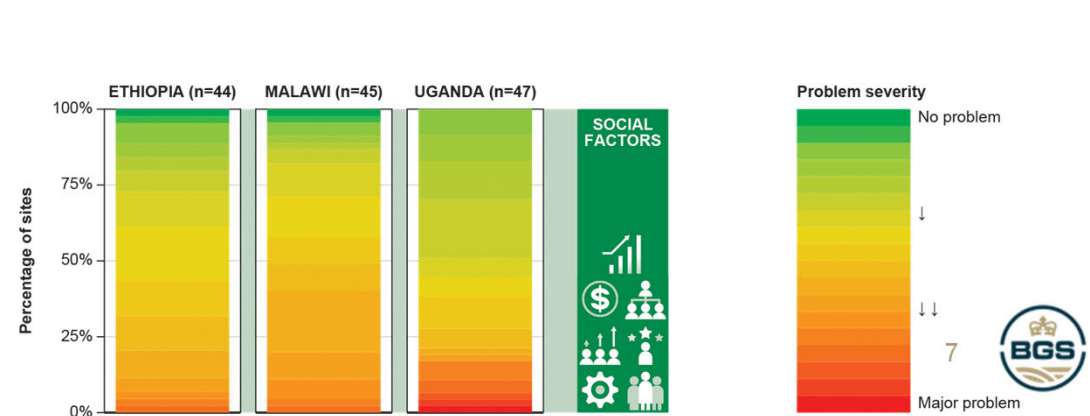




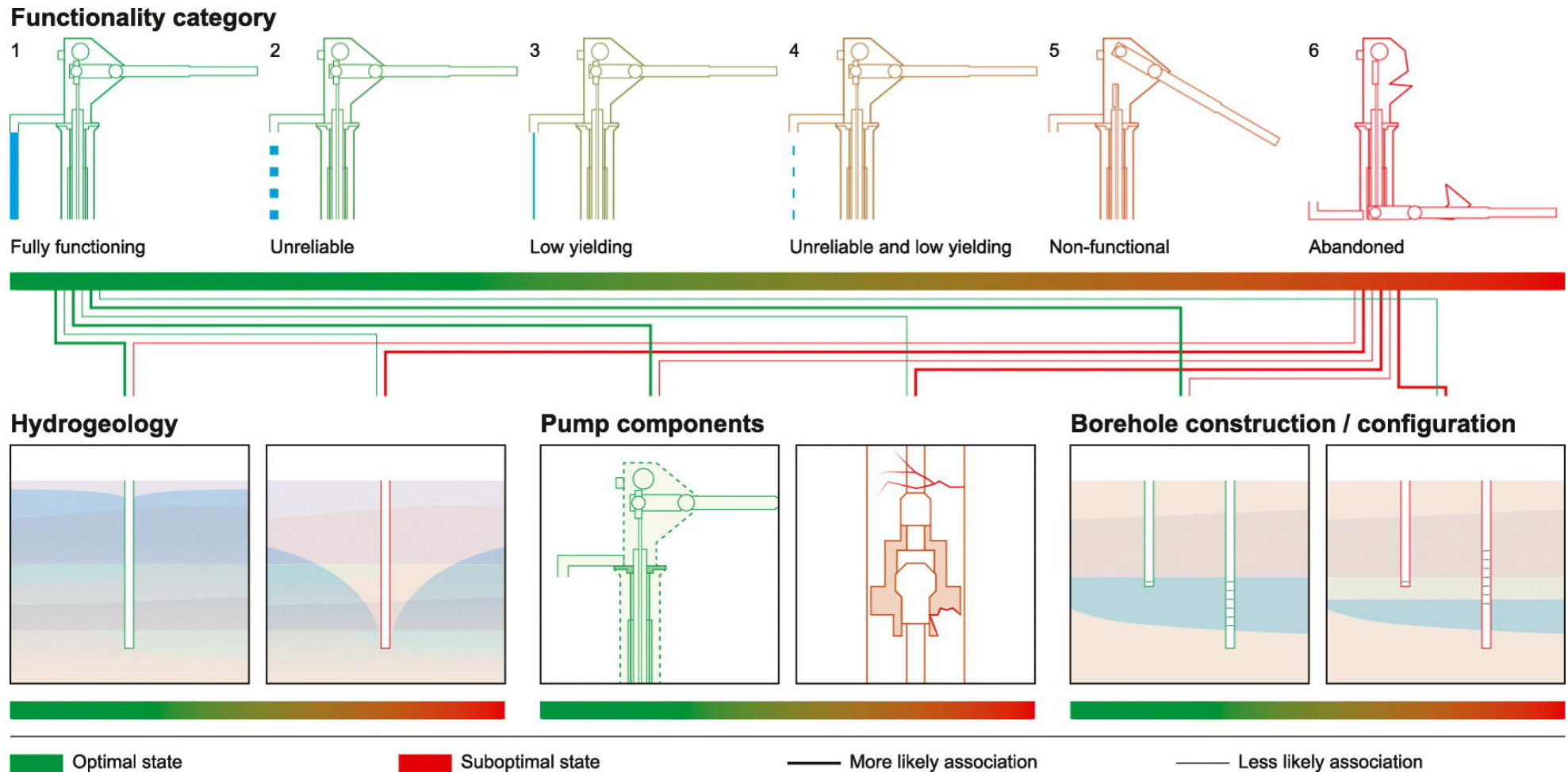
# Social factor state



- Malawi has weakest social context.
- Least problems across factors in Ethiopia.
- Access to spares is the least problematic issue.
- Access to external support, finance are the most problematic issues.



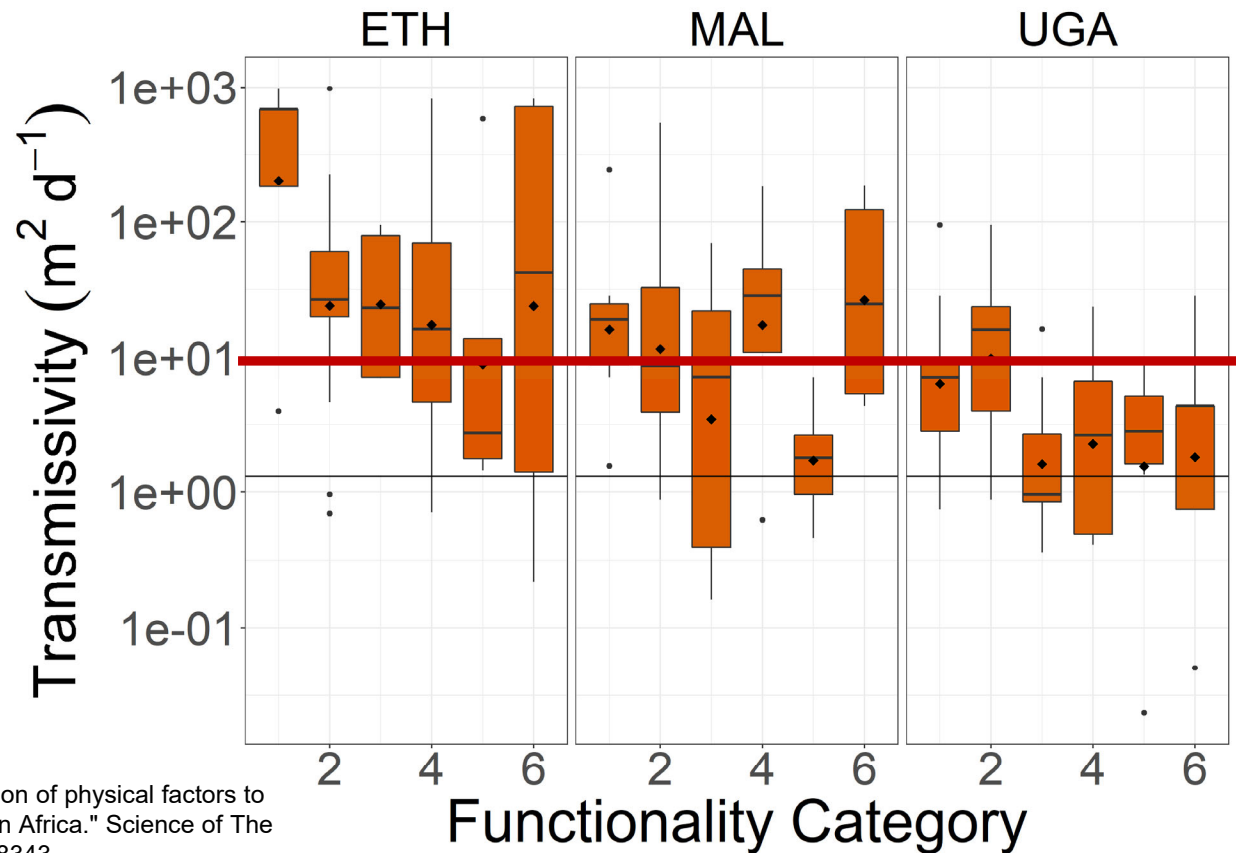
# Influence of physical and technical factors on functionality





# Hydrogeology – aquifer pumping test

- Transmissivity particularly problematic in Uganda.
- Transmissivity results have implications for larger reticulated systems (e.g. solar pumps).

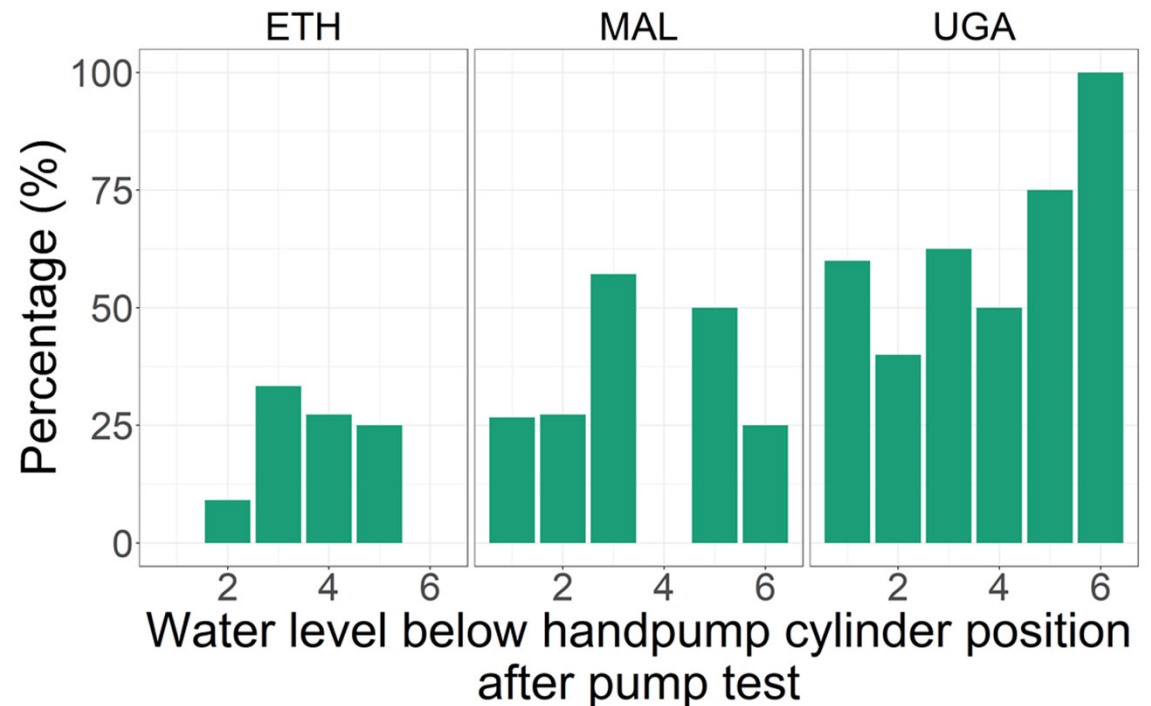
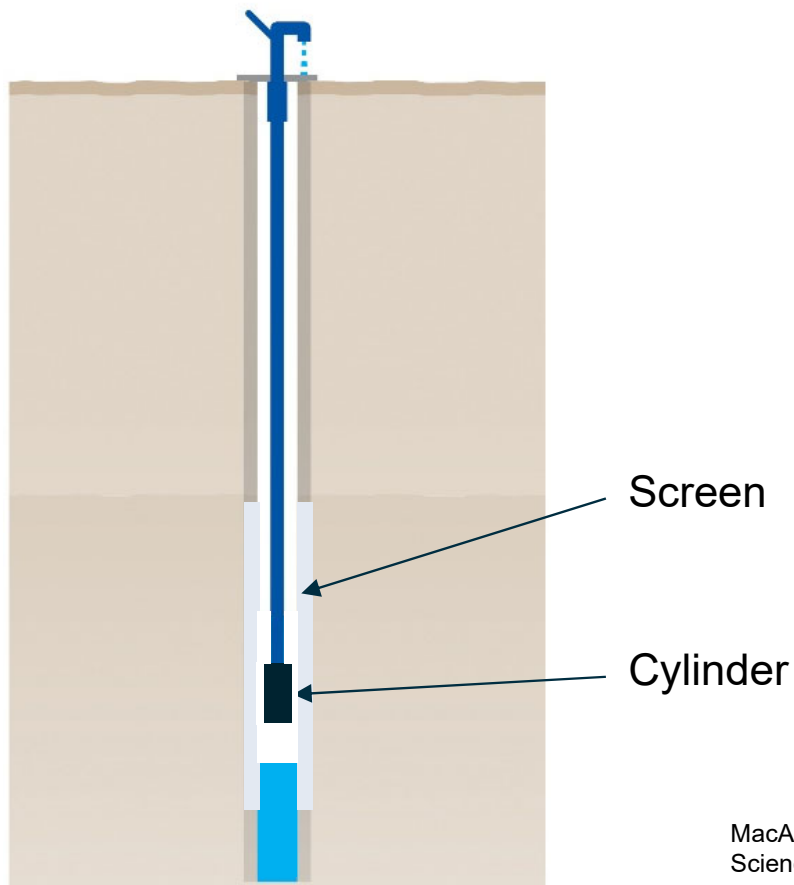


MacAllister, D. J., et al. "Contribution of physical factors to handpump borehole functionality in Africa." *Science of The Total Environment* 851 (2022): 158343.

<https://doi.org/10.1016/j.scitotenv.2022.158343>

# Borehole construction and configuration – CCTV survey

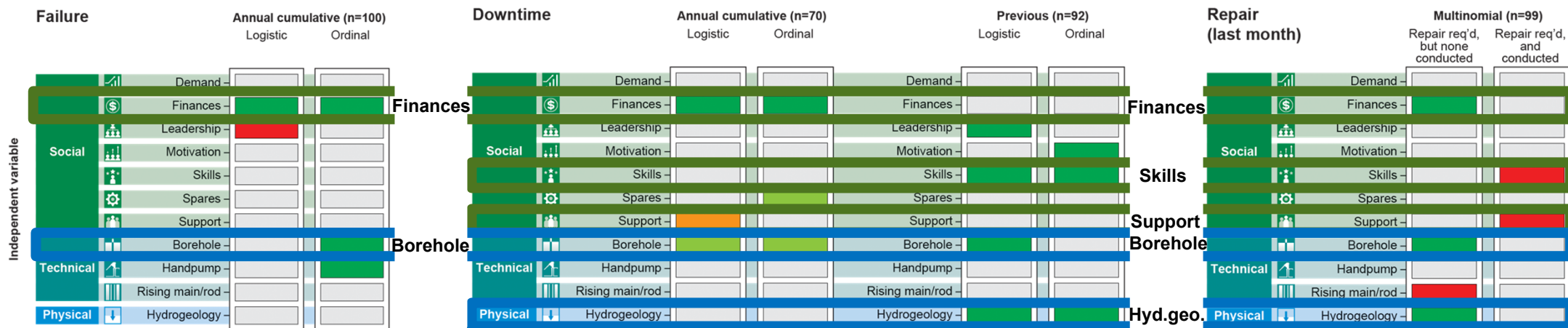
- Due to design or maintenance flaws, risk of water dropping below cylinder at many sites.
- In dry season this means handpump cannot extract water.





# Socio-material factors influence on performance

- **Finances:** important across all performance and response outcomes.
- **Skills:** increases probability of repair occurring and shorter downtimes.
- **Support:** increases probability of repairs occurring but results in longer cumulative downtime.
- **Borehole layout and construction** (cylinder position): increases probability of less failures and timely repairs *not* occurring.
- **Hydrogeology** (transmissivity): increases probability of shorter downtime and timely repairs *not* occurring.



Logistic = < 1 breakdown / > 1 breakdown

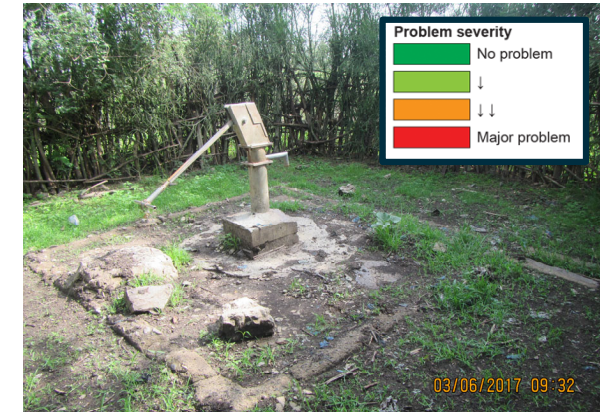
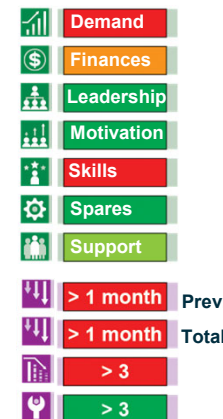
Ordinal = none / 1 / 2 / 3 / >3

Logistic = < 1 week / > 1 week

Ordinal = < 1 day / < 1 week / 2 – 4 weeks / > 4 weeks)

# Abeshge, Ethiopia (EAE01)

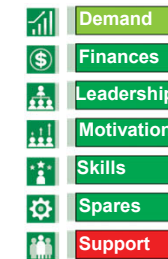
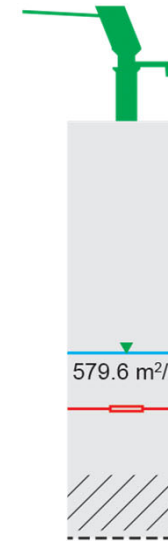
- Until recently technical **support** for the HP was provided by an NGO with equipment to remove pipes during repair. The community were happy.
- The NGO left and handed technical support over to the Woreda water office. They don't have the right equipment and must remove pipes by hand.
- As a result, Woreda staff are reluctant or unable to perform some repairs.
- Often repairs are followed quickly by breakdowns. In the previous instance, only two jerry cans were filled before the HP stopped working.
- This has created tension between the community and the Woreda, the community feel that their support is not being carried out in good faith.





# Abeshge, Ethiopia (EAE07)

- Strong governance within the community (HP committee, village council, and 'idir' – a traditional burial society) and good hydrogeological conditions, has resulted in good HP performance.
- This has allowed the governance structure to evolve beyond the waterpoint.
- The community increased HP fees (finance) from 10 to 25 cents to fund other projects, including piped water with tap stands.
- However, the HP can also be used as an instrument of control. The HP is locked to ensure community members attend meetings or contribute time and labour to projects.



# Oyam, Uganda (UOY08)

- Reasonable **hydrogeology** and an effective management arrangement, evidenced by minimal downtime, have resulted in the HP **finance** system evolving into an interest-accruing loan scheme.
- The need to finance this scheme, and the potential to accrue interest, has increased the impetus to collect user fees.
- The scheme has been accompanied by a harsher system of fines and rules relating to the use of the HP are strictly enforced.
- Good performance of this HP is implicated in the evolution of an institutional innovation that, despite enabling that good performance, has the potential to promote perverse incentives and is liable to abuse.



↓ ↓	None	Prev.
↓ ↓	None	Total
↓	1	
↓	1	

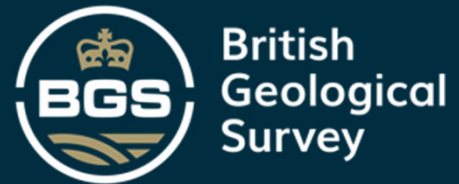


# Conclusions



- Handpumps (HP) can provide a reliable and resilient form of improved rural water supply.
- HP performance and response outcomes vary considerably between countries.
- Key factors influencing performance and response outcomes:
  - Social factors: Finance, Skills, Support
  - Analysis of social factors shows external support and finance are the most problematic issues.
  - Physical factors: Hydrogeology, Borehole construction and layout.
- Complex multidimensional interactions exist between social, physical and technical factors, and performance and response outcomes.
- Rural water programmes need to recognise and work with the unique and complex socio-material context encountered in individual communities (*going with the grain*).
- Understanding socio-material dynamics can increase likelihood of success of new technologies, e.g. solar, and improve access to water and resilience of communities.





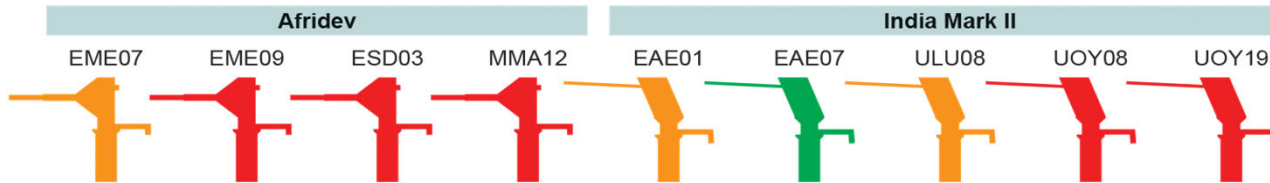
THANK YOU

Any questions?  
[donmac@bgs.ac.uk](mailto:donmac@bgs.ac.uk)

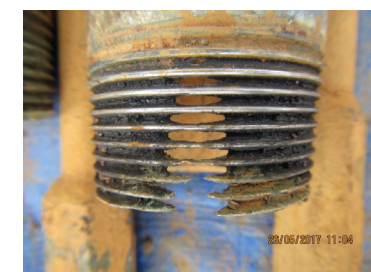




# Condition of handpump components



Component	Afridev				India Mark II					Condition
	EME07	EME09	ESD03	MMA12	EAE01	EAE07	ULU08	UOY08	UOY19	
Bearings	Damaged	Missing		Damaged					Damaged	Good
Body and handle				Damaged				Cor./dam.	Damaged	↓
Hanger and fulcrum	Damaged	Cor./dam.			Missing			Damaged	Damaged	Poor
Cylinder									Corroded	Not applicable
Flanges									Damaged	
Plunger		Damaged	Damaged	Cor./dam.						
Seals	Missing	Damaged		Missing	Damaged		Damaged	Damaged	Damaged	
Valves			Damaged	Damaged			Damaged			
Rising main	9 sections	9 sections	2 (of 7) sections damaged	15 sections	1 (of 20) corroded 9 (of 20) damaged	3 (of 10) sections damaged	12 (of 12) corroded 12 (of 12) damaged	8 (of 9) corroded 4 (of 9) damaged	3 (of 4) corroded 1 (of 4) damaged	
Rising main centralisers	9 present	2 (of 9) missing 1 (of 9) damaged	7 (of 7) missing	4 (of 15) missing 5 (of 15) damaged						
Rod	9 (of 9) corroded 1 (of 9) damaged	9 (of 9) sections corroded	7 sections	14 (of 15) sections corroded	20 sections	2 (of 10) sections damaged	10 (of 10) corroded 6 (of 10) damaged	9 (of 9) corroded 7 (of 9) damaged	4 (of 4) corroded 1 (of 4) damaged	
Rod centralisers	2 (of 9) missing 6 (of 9) damaged	2 (of 9) missing 7 (of 9) damaged	7 (of 7) missing	1 (of 15) missing 14 (of 15) damaged	20 (of 20) missing	10 (of 10) missing	10 (of 10) missing	9 (of 9) missing	4 (of 4) missing	
Average pipe thickness										Above specified standard
Average galvanising thickness										Below specified standard
Average rod diameter										Below specified standard



# Oyam, Uganda (UOY19)

- The only person to have received maintenance and repair training is the committee chair.
- **Borehole** siting influenced this because the HP is located near a school. The school headmaster drew upon its proximity to exert control by volunteering only his son for training.
- The dependency on the son's **skills**, and the link to his father as an authority figure, influenced decisions about the committee chair.
- Only having one trained mechanic makes the HP vulnerable to poor performance, evidenced by its classification as unreliable and low yielding.
- The community report that pipes commonly need repaired or replaced due to corrosion.

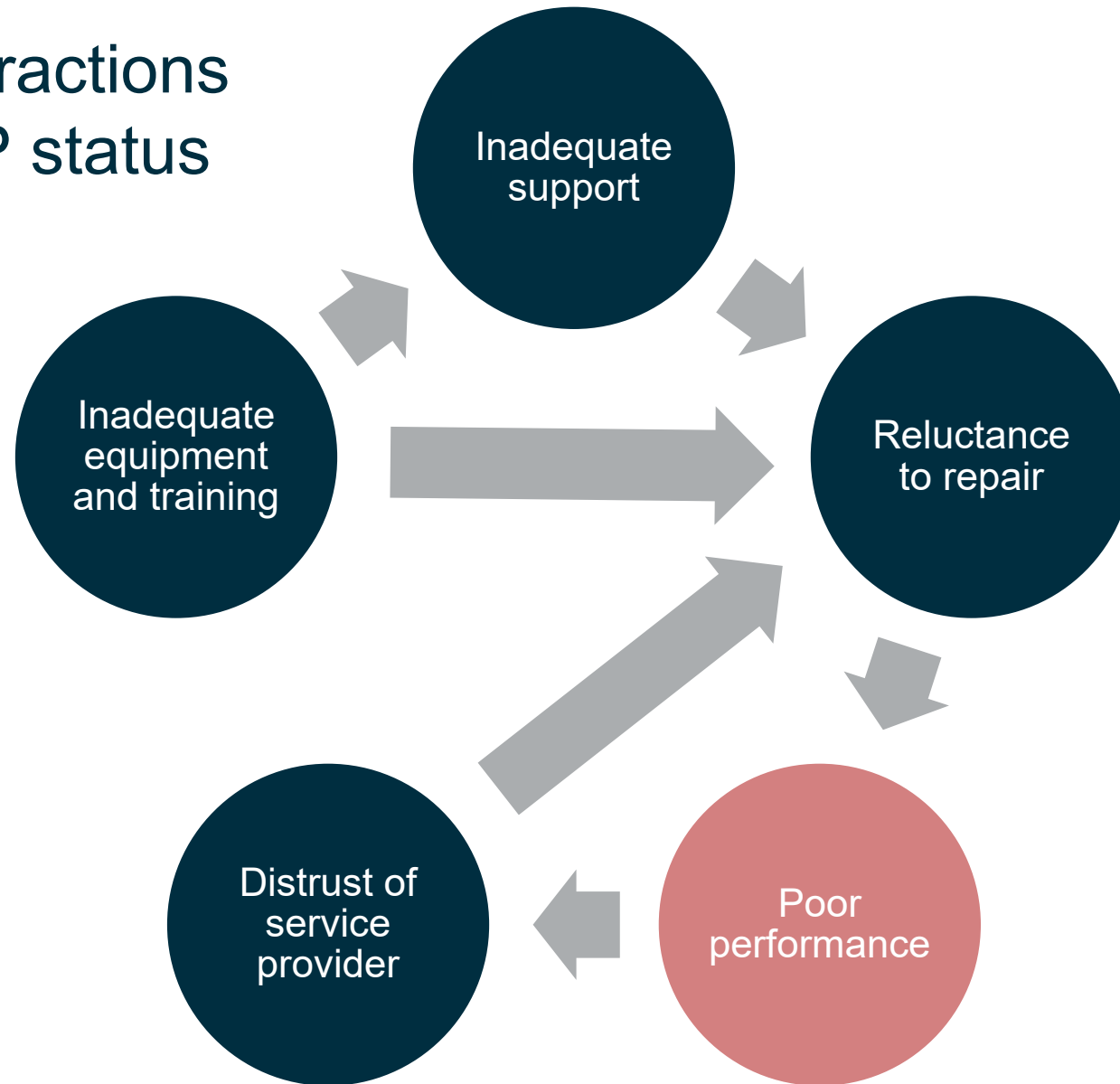


- Demand
- Finances
- Leadership
- Motivation
- Skills
- Spares
- Support

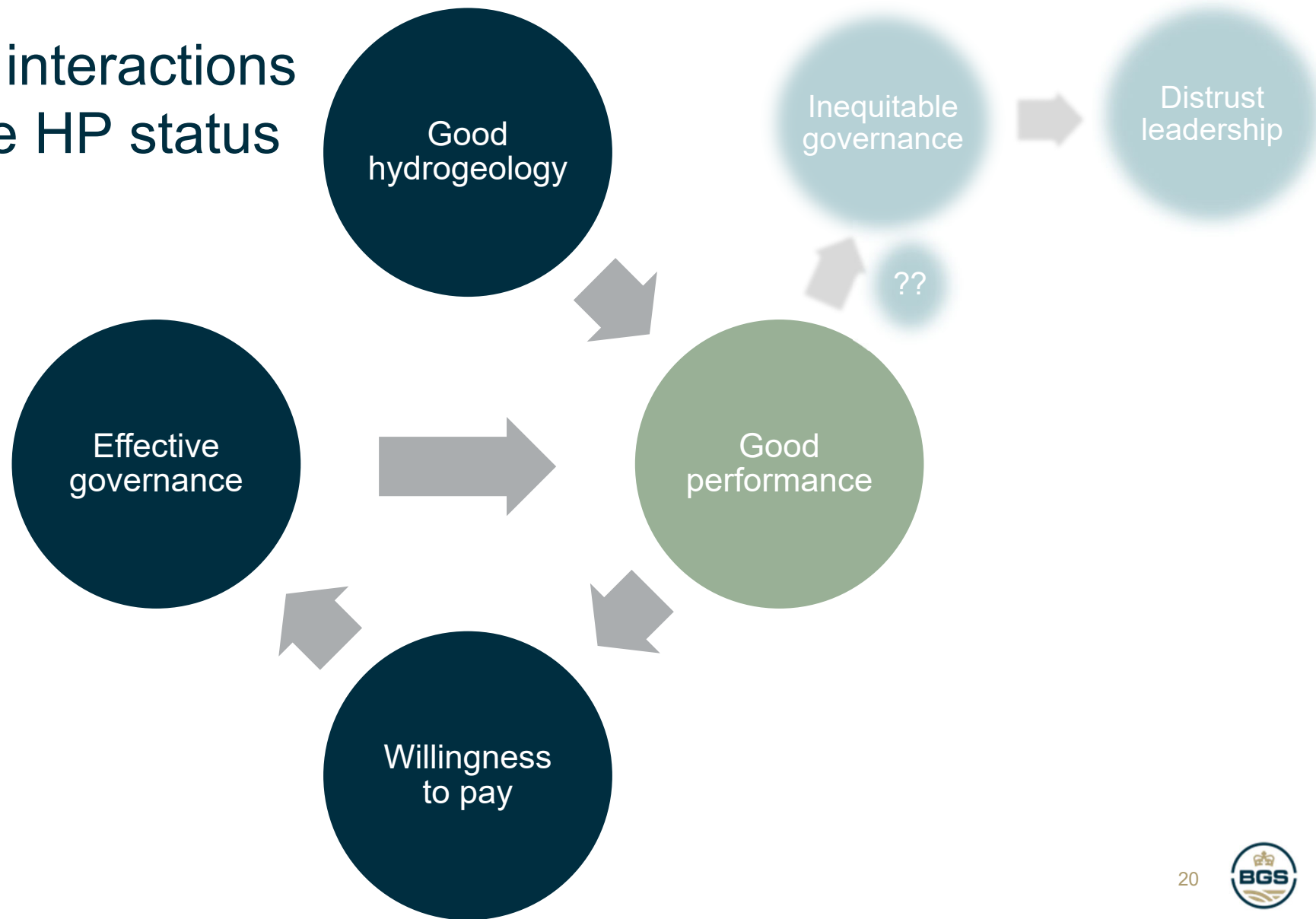
	1-2 weeks	Prev.
	1-2 weeks	Total
	1	
	1	



# Complex interactions determine HP status



# Complex interactions determine HP status





# Complex interactions determine HP status

