

World Data Centre for Geomagnetism, Edinburgh

Sarah Reay
British Geological Survey
sjr@bgs.ac.uk



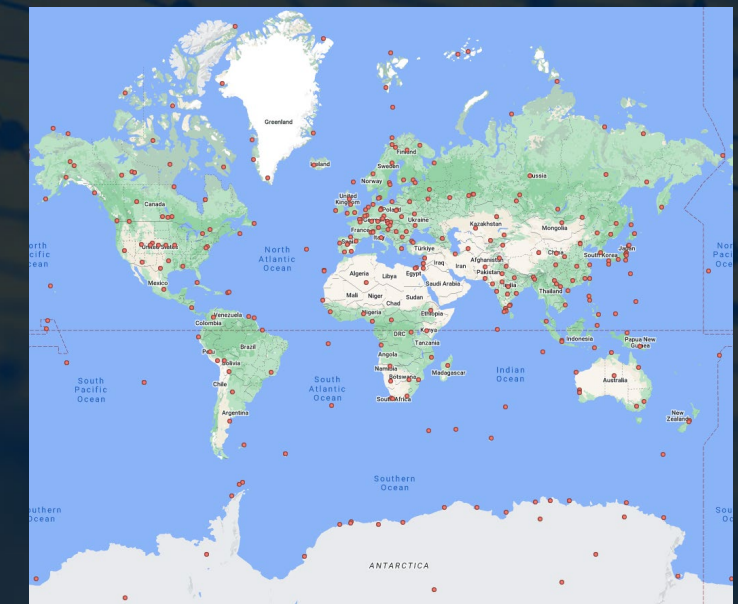
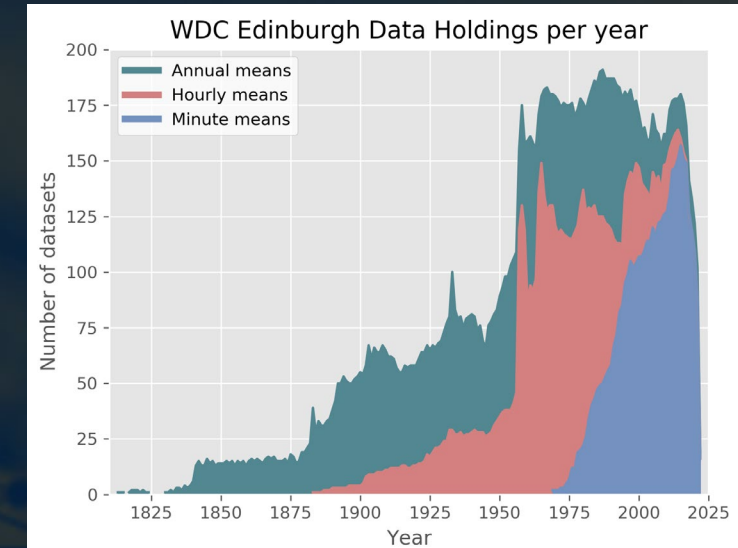
Introduction

The World Data Centre (WDC) for Geomagnetism, Edinburgh serves the geomagnetism community.

Operating since the 1960s it has been a Regular member of the World Data System since 2012.

The WDC for Geomagnetism, Edinburgh holds:

- Data and metadata for ~500 magnetic observatories worldwide.
- Geomagnetic observatory data: annual means (from 1813), hourly means (from 1883), minute means (from 1969).
- Magnetic field models & magnetic survey records.
- Historic UK magnetograms (from 1850), including an online archive of scans.
- Historic observatory yearbooks from UK and worldwide.



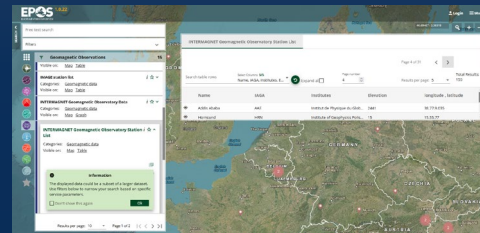
Temporal and spatial distribution of data held in the WDC Geomagnetism, Edinburgh

Recent developments

Community Metadata Database

- A Geomagnetism Observatory Metadata database has been created for the community.
- The metadata API is integrated into the WDC, INTERMAGNET and EPOS portals.

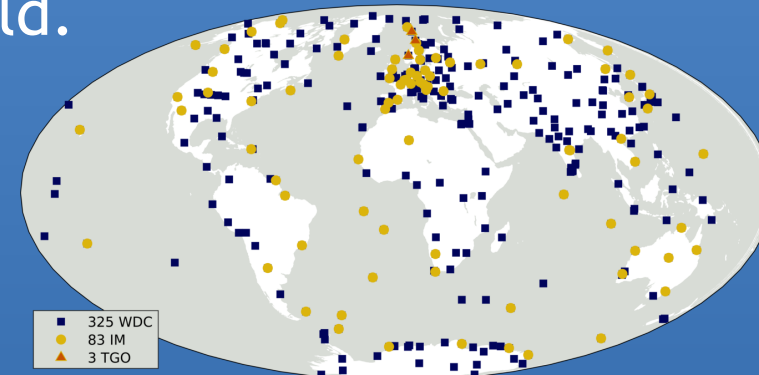
```
observatories:  
  0:  
    iaga_code: "LER"  
    name: "Lerwick"  
    opened: "1923-01-01"  
    closed: ""  
    latitude: "60.138"  
    longitude: "358.817"  
    altitude: "85.0"  
    country: "United Kingdom of Great Britain and N Ireland (GB)"  
    website_url: "https://geomag.bgs.ac.uk/operations/lerwick.html"  
    INTERMAGNET_member: "1991 - "  
    notes: "Yearbooks can be found h_hourly means recalculated"  
    contacts:  
      0:  
        name: "Chris Turbitt"  
        address: "British Geological Survey<br>The Lyell Centre<br>Research Avenue South<br>Edinburgh<br>United Kingdom<br>EH14 4AP"  
        email: "Cvtu@bgs.ac.uk"  
        fax: "+44 (0)131 650 0265"  
      1:  
        name: "Sarah Keay"  
        address: "British Geological Survey<br>The Lyell Centre<br>Research Avenue South<br>Edinburgh<br>United Kingdom<br>EH14 4AP"  
        email: "sjr@bgs.ac.uk"  
        fax: "+44 131 668 2683"  
    instruments: []  
    yearbooks:  
      0:
```



IAGA code	Name	Country	Latitude	Longitude	Status	GIN	Details
AAA	Alma Ata	Kazakhstan	43.25	76.92	closed	Edi	View
AAE	Addis Ababa	Ethiopia	9.035	38.77	closed	Par	View
ABG	Allbag	India	18.638	72.872	imo	Kyo	View
ABK	Abisko	Sweden	68.358	18.823	imo	Edi	View
AAA	Faraday Islan...	Antarctica	-65.245	295.742	imo	Edi	View

Monthly Means Database

- A new database of observatory monthly mean data has been created.
- These data are derived from all available hourly definitive observatory data in the WDC, plus other sources.
- These monthly means are a useful tool for the study Earth's core field.



Plans for next year / challenges ahead

Community metadata review

- We aim to launch a community consultation to review the BGS Geomagnetism Observatory Metadata Database.
- This will give data providers the opportunity to check and update metadata held.

A new data portal

- We intend to introduce a new integrated portal giving improved access to magnetic observatory data and metadata.
- New APIs to access data and metadata are in development. These will be OpenAPI compliant.

CoreTrustSeal accreditation

- We hope to be successful in CoreTrustSeal accreditation.
- Currently responding to feedback from second review round.





Hybrid

World Data System

Members
Forum

2023

Sunday, 22 October