



**British
Geological Survey**

NATURAL ENVIRONMENT RESEARCH COUNCIL

Emeritus Professor J.N. Hutchinson: Historical Landslide Collection – Great Britain

Land Use Planning and Development Programme

Internal Report IR/12/073

“There rolls the Deep where grew the tree
O Earth, what changes hast thou seen!
There where the long street roars, hath been
The stillness of the central sea

The hills are shadows, and they flow
From form to form, and nothing stands;
They melt like mist, the solid lands,
Like clouds they shape themselves and go”

Lord Alfred Tennyson

The Cliff-Founder and Landslide at Gore Cliff, Isle of Wight

G.W. Colenutt, FGS

Landslide at Gore Cliff, 1928

BRITISH GEOLOGICAL SURVEY

LAND USE PLANNING AND DEVELOPMENT PROGRAMME

INTERNAL REPORT IR/12/073

Emeritus Professor J.N. Hutchinson: Historical Landslide Collection – Great Britain

Page, J H. and Dashwood, C.

The National Grid and other Ordnance Survey data are used with the permission of the Controller of Her Majesty's Stationery Office.
Licence No: 100017897/2011.

Keywords

Report; John Hutchinson,
landslides, collections

Front cover

Lord Alfred Tennyson
The Cliff-Founder and Landslide
at Gore Cliff, Isle of Wight, 1928
G.W. Colenutt, FGS

Bibliographical reference

PAGE, J H, DASHWOOD, C. 2012.
All fields on the title and cover should be amended by using File/Properties/Custom. *British Geological Survey Internal Report, IR/12/073*. 126pp.

Copyright in materials derived from the British Geological Survey's work is owned by the Natural Environment Research Council (NERC) and/or the authority that commissioned the work. You may not copy or adapt this publication without first obtaining permission. Contact the BGS Intellectual Property Rights Section, British Geological Survey, Keyworth, e-mail ipr@bgs.ac.uk. You may quote extracts of a reasonable length without prior permission, provided a full acknowledgement is given of the source of the extract.

Maps and diagrams in this book use topography based on Ordnance Survey mapping.

BRITISH GEOLOGICAL SURVEY

The full range of our publications is available from BGS shops at Nottingham, Edinburgh, London and Cardiff (Welsh publications only) see contact details below or shop online at www.geologyshop.com

The London Information Office also maintains a reference collection of BGS publications, including maps, for consultation.

We publish an annual catalogue of our maps and other publications; this catalogue is available online or from any of the BGS shops.

The British Geological Survey carries out the geological survey of Great Britain and Northern Ireland (the latter as an agency service for the government of Northern Ireland), and of the surrounding continental shelf, as well as basic research projects. It also undertakes programmes of technical aid in geology in developing countries.

The British Geological Survey is a component body of the Natural Environment Research Council.

British Geological Survey offices

BGS Central Enquiries Desk

Tel 0115 936 3143 Fax 0115 936 3276
email enquiries@bgs.ac.uk

Environmental Science Centre, Keyworth, Nottingham

NG12 5GG

Tel 0115 936 3241 Fax 0115 936 3488
email sales@bgs.ac.uk

Murchison House, West Mains Road, Edinburgh EH9 3LA

Tel 0131 667 1000 Fax 0131 668 2683
email scotsales@bgs.ac.uk

Natural History Museum, Cromwell Road, London SW7 5BD

Tel 020 7589 4090 Fax 020 7584 8270
Tel 020 7942 5344/45 email bgs_london@bgs.ac.uk

Columbus House, Greenmeadow Springs, Tongwynlais, Cardiff CF15 7NE

Tel 029 2052 1962 Fax 029 2052 1963

Maclean Building, Crowmarsh Gifford, Wallingford OX10 8BB

Tel 01491 838800 Fax 01491 692345

Geological Survey of Northern Ireland, Colby House, Stranmillis Court, Belfast BT9 5BF

Tel 028 9038 8462 Fax 028 9038 8461
www.bgs.ac.uk/gsni/

Parent Body

Natural Environment Research Council, Polaris House, North Star Avenue, Swindon SN2 1EU

Tel 01793 411500 Fax 01793 411501
www.nerc.ac.uk

Website www.bgs.ac.uk

Shop online at www.geologyshop.com

Foreword

This report is a published product by the British Geological Survey (BGS) which details the archiving of a collection bequeathed by Professor John Hutchinson before his death in 2011.

Copyright

Any persons requiring to reproduce any photographic material contained in this report, should first contact the copyright right holder for permission to publish.

Contents

Foreword	i
Copyright	i
Contents	ii
Summary	iii
1 Introduction	1
1.1 J.N. HUTCHINSON: 1926-2011	1
1.2 J.N. HUTCHINSON: Chronology.....	2
2 Use of data	3
2.1 NORFOLK	3
2.2 ISLE OF WIGHT	4
2.3 KENT (Dover).....	8
2.4 KENT (Broadstairs).....	8
Appendix 1 Professor J.N. Hutchinson Data Collection	10
References	120

Summary

This report describes a collection of material, field documents, aerial photographs, reports, maps and reference material, which was bequeathed to the British Geological Survey by Professor J. N. Hutchinson. Any material pertaining to Great Britain was sorted into geographical regions and catalogued with the remaining material archived within the National GeoScience Data Centre to be catalogued at a later date.

1 Introduction

During a long and prestigious career Professor Hutchinson published numerous reports and journal articles. He gained international renown for his work on landslides and other forms of slope instability, and in the engineering importance of features remaining from the effects of freeze-thaw in the Pleistocene period. During 2010 the BGS was approached by Professor Hutchinson to take over his collection of reference material and field books. This material represented a vast collection of source material on landslides and other topics of interest to the engineering community. It was decided to catalogue the material pertinent to Great Britain in order to provide readily accessible reference material. Work during his time at the Building Research Station on the Isle of Wight and Kent/Sussex was used during the creation of the National Landslide Database. Data taken from the collection is being used to update the National landslide Database with examples of this given in Section 2.

The archive material contained in this report covers the following areas of Great Britain:

- Isle of Wight
- Kent
- Sussex
- Norfolk
- UK Miscellaneous (covers areas of Northern Ireland, Suffolk, Essex, London, Shropshire, Dorset, Yorkshire, Lincolnshire, Cambridgeshire, Wiltshire, Rutland, Scotland)
- Wales

1.1 J.N. HUTCHINSON: 1926-2011

Emeritus Professor of Soil Mechanics at Imperial College

Whilst John's academic contributions are many and varied, he focussed mainly on the importance of understanding geomorphology and earth surface processes in civil engineering, with a strong emphasis on slope processes. As such he was the pioneer of a discipline that has greatly gathered traction and momentum in recent years, and he continued to participate in research and in academic discussions to the very end. His work on Quaternary history, and in particular of periglacial processes, in contemporary ground conditions, will leave an enduring legacy. In the landslide field he will perhaps be best remembered for his work on undrained loading, but this is just one of many contributions.

Professor Hutchinson's breadth of knowledge, intellectual prowess and exquisite sense of insight were a remarkable combination, wrapped up in a personality that showed both warm and humility. His remarkable attention to detail and insight was often most evident in the reviews of papers submitted for publication.

Extracted from American Geophysical Union, Landslide Blogosphere

1.2 J.N. HUTCHINSON: CHRONOLOGY

- 1926 27th December: born in Coventry, England
- 1937-44 Pupil at Ballake School, Coventry
- 1944-47 Undergraduate, University of Birmingham
- 1947 BSc (1st class Honours) in Civil Engineering
- 1947-50 Engineer under Agreement with Robert M Douglas (Contractors) Ltd, Birmingham. Worked on open-cast mining and on the construction of Tinplate mills in South Wales
- 1950 Made three-month guideless traverse of the Alps
- 1952 Surveyor on mountaineering and glaciological expedition to Lyngen, Arctic Norway
- 1952 AMICE (now MICE)
- 1950-57 Joined Rendel, Palmer and Tritton, Consulting Engineers, Westminster to design Reinforced and pre-stressed concrete bridges, jetties, oil refineries and power stations
From 1955, Deputy Resident Engineer on the construction of South Denes. Generating Station, Great Yarmouth
- 1957-58 Joined the Swedish Geotechnical Institute, Stockholm. Worked on road and airport Foundations and, under Sten Odenstad, on the Göta slide of 1957 north of Gotenburg
- 1958-61 Moved to the Norwegian Geotechnical Institute, Oslo, as research engineer under Laurtis Bjerrum and Ove Eide. Worked initially on settlements and friction piles in soft clays. From 1959 onwards, led the investigations into two major quick clay slides, Furre and Vistad, in Central Norway
- 1961-65 Senior Research fellow at the Building Research Station, Watford and, jointly, research Student at Peterhouse, University of Cambridge
- 1965 PhD in Geotechnics & Engineering Geology (Cambridge)
- 1965-92 Joined staff of the Civil Engineering Department, Imperial College London: 1965, Senior Lecturer; 1970, University Reader in Soil Mechanics; 1977, Professor of Engineering Geomorphology
- 1992 Emeritus Professor, Senior Research Fellow
- 1982 FICE
- 1982-88 Chairman, IAEG Commission on Landslides and other Mass Movements
- 1985-88 President, Quaternary Research Association, then Honorary Member
- 1987 D Sc (Engineering) in Geotechnics and Engineering Geology (London)
- 1991 British Geotechnical Society Prize. Chartered Geologist
- 2001 4th Glossop Lecture & Glossop Medal, Geological Society of London Engineering Group
- 2004 Elected Fellow of the Royal Academy of Engineering, FRng

2 Use of data

Professor Hutchinson donated his archive of UK landslide material to the BGS in 2010. This is housed in the BGS National Geological Repository and can be viewed with permission from BGS Enquiries. Examples taken from the archive collection are detailed below to highlight how they have been used to supplement information within the National Landslide Database.

2.1 NORFOLK

REFERENCE: NORFOLK/KW2010452/001/001.28

Cromer Lighthouse 2 (Landslide ID4882)

A record for the Cromer Lighthouse 2 landslide was contained within the National Landslide Database. Newspaper records within the archive allowed a date to be added to the database as well as additional information on local weather conditions.

Taken from / EASTERN DAILY PRESS 20 DEC' 1973

1/2 m. CUBIC YARDS GO OVER CROMER CLIFF

AN estimated half a million cubic yards of sandy material is blocking the beach near the Cromer-Overstrand border, following a recent cliff fall.

The assessment of the size of the fall was made by Cromer U.D.C.'s surveyor, Mr. T. B. Adamson, who thought it was the largest

fall he had seen for over 12 years.

"There is about two acres of land lost near to the golf course, and it is creeping very close to one of the tees." He continued: "I imagine it will involve changing the layout of part of the golf course."

Tee closed

However, the secretary of the Royal Cromer Golf Club, Mr. G. Eyre Higgins, told a reporter: "We will not have to alter the layout of the course,

but the ladies' tee has had to be closed." He went on: "It has hit us, of course, but not too badly. It takes the right of way away."

Mr. Eyre Higgins explained that this meant walkers could no longer walk along the edge of the course, but now had to move on to the course itself.

Referring to the fall, and others that have occurred over the years, he commented: "The overall gnawing away of the cliff is quite worrying."

Certainly, the affected area has suffered a number of large and small falls in recent times.



2.2 ISLE OF WIGHT

REFERENCE: ISLE OF WIGHT/KW2010372/003/003/17

Rocken End 2 (Landslide ID1725)

An historic eye-witness statement and accompanying photographic evidence was contained in the archive for a landslide catalogued within the National Landslide Database. The following is a reproduced account of the landslide.

Gritnam,
Pear Tree Avenue,
Southampton,
18th January 1929

Mr G.W. Colenutt
Ryde,
Isle of Wight

Dear Sir

I am afraid you will find my remarks on the Landslide rather long and detailed, but as I am not very sure just what particular points are likely to attract you I am putting down pretty well all I know, in the hope that you will have the patience to sift out the items of greatest interest.

No doubt you are familiar with all the events immediately preceding the main collapse on July 26th, including the considerable fall of the previous week which closed the road, - so I will confine my remarks to such observations as may not have been made by others.

I was spending a holiday at Knowles Farm, St. Catherines, which of course is within a few hundred yards of Windy Corner; and on my arrival these some 10 days before the great fall. I was much impressed by the considerable movement which had taken place above the lower cliff along Chale beach since my visit of the previous year.

On the evening of July 25th I was sitting close by the stream below Windy Corner watching the curious movements taking place over a wide area of the soft ground: the turf was visibly breaking up and sliding down the slope, and in the course of an hour or so I noticed a small bush entirely uprooted.

I was about to commence lunch at the farm on the following day (July 26th) when our attention (there was a party of us) was arrested by a pronounced tremor and rumbling noise and we all looked towards the fireplace, where soot was falling and the screen shaking.

Of course we naturally came to the conclusion that the cliff had at last fallen and so we hurried through our meal so as to be on the scene as soon as possible.

The time would be about 1.45 p.m. As I think the actual time of this occurrence may be of importance to you I should like to point out that I cannot be sure of the time to within several minutes, since, with the holiday makers usual indifference, our watches were not accurately timed.

Regarding the tremor itself I should say it lasted 3 or 4 seconds and was characterised by one or two severe bumps. As I afterwards discovered, the noise and vibration was quite unlike that produced by the sliding material.

Well, lunch being finished, I hurried out towards Windy Corner and was astonished to find little change had taken place in the cliff since the previous day, but there was an almost continuous fall of fragments from the rock face.

I had a small telescope which I trained on the large crack at the eastern end of the fracture, and in the space of a quarter of an hour I observed a definite widening of this crack and an increase in the amount of falling debris.

Having bought a small hand camera with me I focussed it on the spot and carefully memorised all the movements necessary for a quick change of film. I had previously noted the exact number of turns required to bring a fresh film into play.

My first exposure was film, No. 1, taken shortly after 3.00, p.m.



Knight's Library, Ventnor 1928

About ten minutes elapsed, when the main crack gradually widened and without any warning report the whole cliff face swayed forwards, - there was a crackle of stones falling into crevices and the downward plunge commenced.

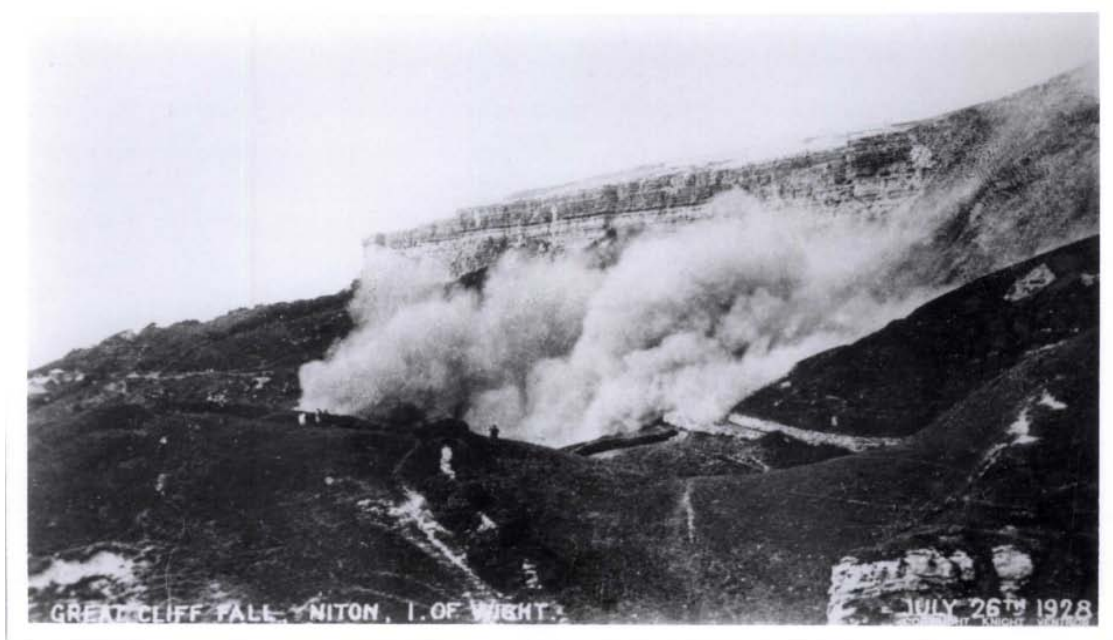
Exposure No. 2 was made.



Knight's Library, Ventnor 1928

With very little noise, but gradually increasing to a roar, the vast bulk swept down to the road and disintegrated during its course into comparatively small fragments; clouds of dust arose from the sweeping torrent of stones, the full extent of which was obscured by the rising ground on my left.

I now made exposure No. 3.



Knight's Library, Ventnor 1928

In another second or two all was still and quiet and the dust rapidly dispersed and was swept up over the cliff as shown in photograph No. 4.



Knight's Library, Ventnor 1928

Save for a few minor movements nothing further took place that day and I hurried away to have my films developed.

Regarding the two photographs enclosed, the one marked A was an attempt at obtaining a complete picture of the slide, but owing to the direct lighting of the afternoon sun the appearance is somewhat flat. So I made another attempt early the following morning with much greater success, as you will see from print B.

This latter photo would make a fine lantern slide and I shall be glad to lend you the negative if you think it of sufficient interest.

The photographs which I have numbered 1 to 4 above are those which you obtain from Mr Knight.

In conclusion, I shall be most interested to read your paper on this event, and if available, would regard the receipt of a copy as great favour.

Yours faithfully

H.J. Watson

2.3 KENT (DOVER)

(REFERENCE: KENT/KW2010452/002/0.10.15)

Guildford Battery, East Cliff (**Landslide ID18733**)

Landslides resulting in fatalities are rare in Britain and this historic newspaper cutting detailing the tragic consequences of a failure is an important addition to the National Landslide Database.

Despite the difficulties in detecting the exact location of the cliff fall, due to cliff erosion or changes to the names of buildings over the years, a record was added to the database.

14th December 1810

Mrs. Poole and her six children killed by fall of cliff

On the 14th December, 1810, seven persons of one family were killed by a fall of cliff near the Guildford Battery at East Cliff. The following record of the event is copied from a tombstone at Old St. James's churchyard: "Sacred to the memory of Eliza Poole, wife of John Poole, aged 48 years; also of John Poole, aged 13 years, Luke Poole; aged 11 years, Emma Poole, aged 9 years, Benjamin Poole, aged 6 years, William Poole, aged 4 years; and Sophia Jarvis, niece of Eliza Poole, aged 6 years; who, in the hours of sleep, were destroyed by a fall of cliff on the 14th December, 1810." John Poole was the master carpenter in the Ordnance Yard, where his house under the cliff was situated. Poole himself was caught in the midst of the ruins of his home when trying to arouse his family, but was taken out alive. His pig, which was kept in an adjoining cave in the cliff, was not dug out until the 23rd May in the following year, and strange to say, the animal, after its 160 days' fast, was still alive, and able to walk, although almost reduced to a skeleton.

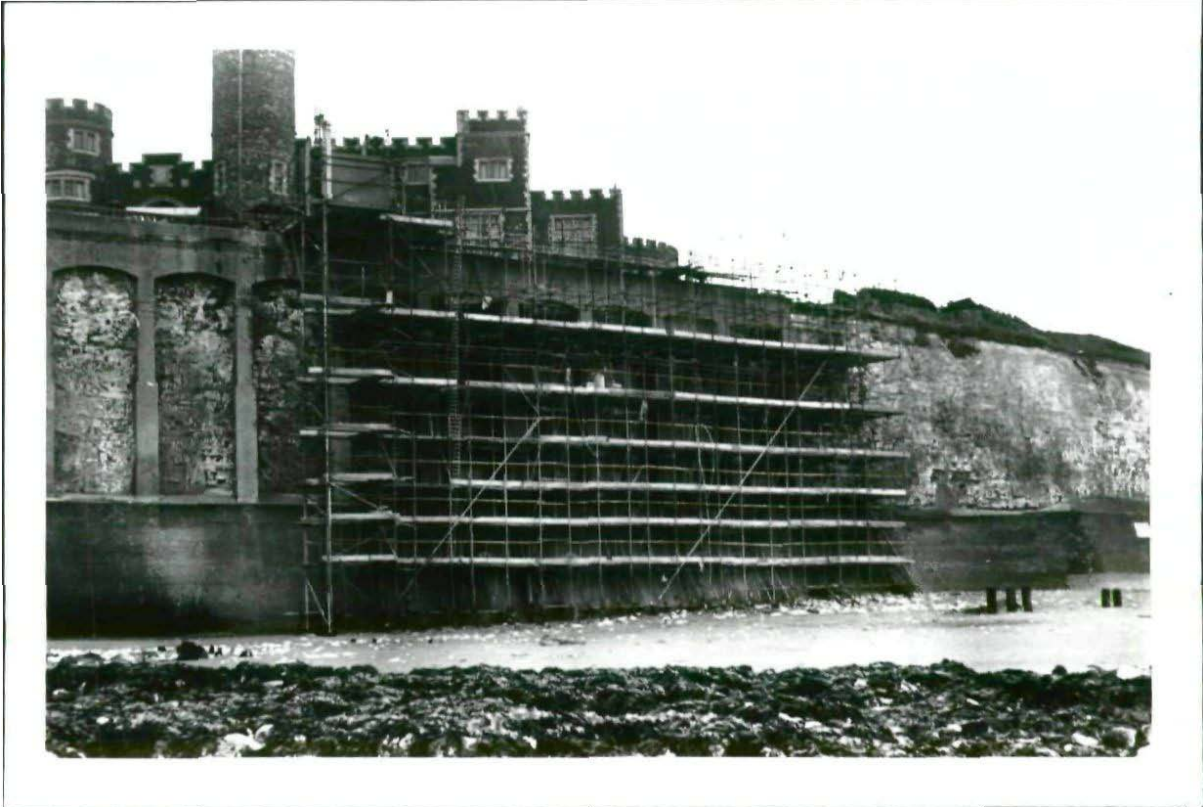
Dover Express

2.4 KENT (BROADSTAIRS)

REFERENCE: KENT/KW2010452/002/009

Hackemdown Point Joss Bay (**Landslide No. 1772**)

Photographs and Report on the stability of a cliff of upper chalk at Kingsgate Castle, Broadstairs, Kent. J.N. Hutchinson. 14.6.1967 and 31.12.1968. *Chalk fall February 1966*



Appendix 1 Professor J.N. Hutchinson Data Collection

AN EXPLANATION OF SPREADSHEET HEADINGS WITHIN THE REPORT									
PROFESSOR J.N. HUTCHINSON DATA COLLECTION – SUSSEX									
<i>(an example of geographical location header on each page)</i>									
KW2010452 NGRC Box Number	LUPD Reference Number	Item	Description	Quantity	Item Ref. (if given)	Date of publication (if given)	NLD landslide number and name	Grid ref Easting	Grid ref Northing
(For internal purposes only) KW2010452 - Deposit number with the National Geological Repository, followed by the NGRC Box Number	(For internal purposes only) Prefix NGRC Box Number followed by the Land Use Planning and Development reference number for each item	Details of the reference material contained in the collection, e.g. journal, photographs, press cutting	Title of the item and relevant associated information, e.g. authors and date of landslide (where applicable)	Amount of each item	Volume/issue number of publication	Date detailing when the item was published	National Landslide Database number and name. 'Grouping on GeolIndex' refers to more than one landslide associated with the collection item	Easting	Northing
Example	Example	Example	Example	Example	Example	Example	Example	Example	Example
001	013	Magazine article	Submerged and reclaimed Coastal Sussex. Sussex County Magazine. E. Harris. <i>Mention of landslide at Seven Sisters 14.4.1914</i>	x1	Vol. 17 pp. 260-262	1943	1279 - Seven Sisters	554000	96700
002	076	Journal	Investigation of a coastal landslip at Charmouth, Dorset. B. Denness, D.M. McCann and P. Grainger. QJEG	x1	Vol. 8, pp. 119-140, 11 figs.	1975	846 - Higher Sea Lane Cliff	336093	93209
001	001/002/04	Box of photographic reprints - Yellow Kodak box - Oblique photos	Cambridge University Collection - Coastal landslips between St Catherine's Point and Blackgang Chine, St Catherine's Point to Ventnor, Isle of Wight (cliffs, farmland, town)	x39 (different views)	ARS 13-51 (some missing)	13.6.1967			

PROFESSOR J.N. HUTCHINSON DATA COLLECTION – ISLE OF WIGHT

KW2010 374 NGRC Box Number	LUPD Reference Number	Item	Description	Quantity	Item Ref. (if given)	Date of publication (if given)	NLD landslide number and name	Grid ref Easting	Grid ref Northing
001	001/001	Box of photographic reprints - Yellow Kodak box - Oblique photos	Aerofilms Ltd. Coastal landslide - Isle of Wight	x31	A273189 - A273120	3.3.1974			
001	001/002/01	Box of photographic reprints - Yellow Kodak box - Oblique photos	Cambridge University Collection - Whale Chine to Binnel (A)	x3 (different views)	390188-390211, BJ 73, CFO 24	9.5.1980			
001	001/002/02	Box of photographic reprints and negatives- Yellow Kodak box - Oblique photos	Cambridge University Press - Bordwood Ledge to Steephill, Chale Bay, St. Catherine's Point	x10 (different views)	BJ65-69 (some missing), SZ 585789-554770	15.7.1948			
001	001/002/02	Box of photographic reprints - Yellow Kodak box - Oblique photos	Cambridge University Collection - Woody Point to Knowles (<i>outside copyright - approval given by CUPAP</i>)	x1	BJ70 - SZ537762-496753				
001	001/002/03	Box of photographic reprints - Yellow Kodak box - Oblique photos	Cambridge University Collection - Coast, Cliffs, Ventnor Pier, Isle of Wight	x23 (different views)	CFO 25-69 (some missing)	7.5.1978			
001	001/002/03	Box of photographic reprints - Yellow Kodak box - Oblique photos	Cambridge University Collection - St Catherine's Point, looking South East	x2	CFO 22-23, SZ 490763	7.5.1978			

PROFESSOR J.N. HUTCHINSON DATA COLLECTION – ISLE OF WIGHT

KW2010 374 NGRC Box Number	LUPD Reference Number	Item	Description	Quantity	Item Ref. (if given)	Date of publication (if given)	NLD landslide number and name	Grid ref Easting	Grid ref Northing
001	001/002/03	Box of photographic reprints - Yellow Kodak box - Oblique photos	Cambridge University Collection - St Catherine's Point	X6	CFO 24-29, SZ 483770 - 493758	7.5.1978			
001	001/002/03	Box of photographic reprints - Yellow Kodak box - Oblique photos	Cambridge University Collection - St Catherine's Point	x1	CFO 30, SZ 496753	7.5.1978			
001	001/002/03	Box of photographic reprints - Yellow Kodak box - Oblique photos	Cambridge University Collection - St Catherine's Point	x4	CFO 31-35, SZ 490763	7.5.1978			
001	001/002/03	Box of photographic reprints - Yellow Kodak box - Oblique photos	Cambridge University Collection - St Catherine's Point	x9	CFO 36-45, SZ 483770-493758	7.5.1978			
001	001/002/03	Box of photographic reprints - Yellow Kodak box - Oblique photos	Cambridge University Collection - Near Niton, looking ENE	x3	CFO 46-48, SZ 498754	7.5.1978			
001	001/002/03	Box of photographic reprints - Yellow Kodak box - Oblique photos	Cambridge University Collection - St Catherine's Point	x1	CFO 49, SZ 496753	7.5.1978			
001	001/002/03	Box of photographic reprints - Yellow Kodak box - Oblique photos	Cambridge University Collection - Looking NE to Ventnor	x2	CFO 50-51, SZ537764	7.5.1978			

PROFESSOR J.N. HUTCHINSON DATA COLLECTION – ISLE OF WIGHT

KW2010 374 NGRC Box Number	LUPD Reference Number	Item	Description	Quantity	Item Ref. (if given)	Date of publication (if given)	NLD landslide number and name	Grid ref Easting	Grid ref Northing
001	001/002/03	Box of photographic reprints - Yellow Kodak box - Oblique photos	Cambridge University Collection - St Lawrence	x1	CFO 52, SZ 537762	7.5.1978			
001	001/002/03	Box of photographic reprints - Yellow Kodak box - Oblique photos	Cambridge University Collection - WSW of Ventnor	x1	CFO 53, SZ 548767	7.5.1978			
001	001/002/03	Box of photographic reprints - Yellow Kodak box - Oblique photos	Cambridge University Collection – Ventnor	x4	CFO 54-58, SZ 564774	7.5.1978			
001	001/002/03	Box of photographic reprints - Yellow Kodak box - Oblique photos	Cambridge University Collection - Looking North to Shanklin	x1	CFO 59, SZ 587783	7.5.1978			
001	001/002/04	Box of photographic reprints - Yellow Kodak box - Oblique photos	Cambridge University Collection - Coastal landslips between St Catherine's Point and Blackgang Chine, St Catherine's Point to Ventnor, Isle of Wight (cliffs, farmland, town)	x39 (different views)	ARS 13-51 (some missing)	13.6.1967			
001	001/002/04	Box of photographic reprints - Yellow Kodak box - Oblique photos	Cambridge University Collection - Ventnor Town	x1	ARS16, SZ 565776	13.6.1967	Grouping on GeolIndex		
001	001/002/04	Box of photographic reprints - Yellow Kodak box - Oblique photos	Cambridge University Collection - Down land west of Ventnor	x1	ARS17, SZ 545777	13.6.1967	Grouping on GeolIndex		

PROFESSOR J.N. HUTCHINSON DATA COLLECTION – ISLE OF WIGHT

KW2010 374 NGRC Box Number	LUPD Reference Number	Item	Description	Quantity	Item Ref. (if given)	Date of publication (if given)	NLD landslide number and name	Grid ref Easting	Grid ref Northing
001	001/002/04	Box of photographic reprints - Yellow Kodak box - Oblique photos	Cambridge University Collection - Blackgang Chine to Atherfield Point	x18	ARS 34-51, SZ483768-451791	13.6.1967			
001	001/002/05	Box of photographic reprints - Yellow Kodak box - Oblique photos	Cambridge University Collection - Coastal cliffs, Chale Bay, St Catherine's Point, Isle of Wight	x27 (different views)	BMW 69-95	4.6.1973			
001	001/002/05	Box of photographic reprints - Yellow Kodak box - Oblique photos	Cambridge University Collection - Atherfield Point	x3	BMW 69-71, SZ 451791	4.6.1974			
001	001/002/05	Box of photographic reprints - Yellow Kodak box - Oblique photos	Cambridge University Collection - Chale Bay	x3	BMW 72-75, SZ 460787	4.6.1974			
001	001/002/05	Box of photographic reprints - Yellow Kodak box - Oblique photos	Cambridge University Collection - Whale Chine, Chale Bay	x1	BMW 76, SZ 468783	4.6.1974			
001	001/002/05	Box of photographic reprints - Yellow Kodak box - Oblique photos	Cambridge University Collection - Chale Bay	x3	BMW 77-79, SZ 476775	4.6.1974			

PROFESSOR J.N. HUTCHINSON DATA COLLECTION – ISLE OF WIGHT

KW2010 374 NGRC Box Number	LUPD Reference Number	Item	Description	Quantity	Item Ref. (if given)	Date of publication (if given)	NLD landslide number and name	Grid ref Easting	Grid ref Northing
001	001/002/05	Box of photographic reprints - Yellow Kodak box - Oblique photos	Cambridge University Collection - Chale Bay	x4	BMW 80-84, SZ 480771	4.6.1974			
001	001/002/06	Box of photographic reprints - Yellow Kodak box - Oblique aerial photos	Aerofilms Ltd - A coastal town, Isle of Wight	x7 (different views)	390247-290254	9.5.1980			
001	001/002/07	Box of photographic reprints - Yellow Kodak box - Oblique aerial photos	Aerofilms Ltd - Dunnose to Old Park, Isle of Wight	x14 (different views)	394016-394031 (some missing)	18.8.1980			
001	001/002/08	Box of photographic reprints - Yellow Kodak box - Oblique photos	Aerofilms Ltd - Monks Bay to Ventnor Bay, Isle of Wight	x22 (different views)	394000-15 390228 393994 393996- 393999	no date			
001	001/002/09	Box of photographic reprints - Yellow Kodak box -	Ventnor railway station. Rail track, tunnels and signal box. Backscar of the Undercliff. Building Research Station	x9 (different views)	Ref. No. 65-552-1 SZ456131 77976	no date, looks 1940s			
001	001/003 now in Box 003/017	Reprints of old B/W photographs (see 003/017 historical letter from H.J. Watson)	Commencement of Cliff Fall, Niton, Isle of Wight. Photographs moved to Box 003/017 to accompany letter and scanned	x4 (different views)	not given	26.7.1928			

PROFESSOR J.N. HUTCHINSON DATA COLLECTION – ISLE OF WIGHT

KW2010 374 NGRC Box Number	LUPD Reference Number	Item	Description	Quantity	Item Ref. (if given)	Date of publication (if given)	NLD landslide number and name	Grid ref Easting	Grid ref Northing
001	001/004/01	Box of photographic reprints and negatives - Yellow Kodak box	Blue negatives of presentation showing graphs and cross-section images, Isle of Wight	x20 (different images)	not given	not given			
001	001/004/02	Box of photographic reprints - Yellow Kodak box	Colour photographs M. Chandler. Chalk fall affecting coast road at Compton Down, Isle of Wight	x9 (different images)		24.1.81			
001	001/004/03	Box of photographic reprints and negatives - Yellow Kodak box	Imperial College - Chale – seepage, (negatives and photographs)	x12 (different images)		not given			
001	001/004/04	Deleted							
001	001/004/05	Box of photographic reprints Oblique photo - Yellow Kodak box	Coastal landslide with embankment feature	x1	390226	not given			
001	001/005	Box of photographic negatives - Yellow Kodak box	High altitude inland vertical photo shots	x3 (different images)	3116-3117	not given			
001	001/006	Reprints of B/W photographs	Aerofilms Ltd. Coastal views, Isle of Wight (mixture)	x3 (different images)	390277 390260	not given			
001	001/006	Reprints of B/W photographs	Old Park to Ventnor	x1	393986	9.5.1980			

PROFESSOR J.N. HUTCHINSON DATA COLLECTION – ISLE OF WIGHT

KW2010 374 NGRC Box Number	LUPD Reference Number	Item	Description	Quantity	Item Ref. (if given)	Date of publication (if given)	NLD landslide number and name	Grid ref Easting	Grid ref Northing
001	001/007	Aerial shot B/W photograph	Cambridge University Collection - Undercliff	x1	RC8-DS/05	1.4.1981			
		<i>Missing</i>	<i>Cambridge University Collection - St Catherine's Point to Woody Point</i>	x12	<i>RC8-DS 96-107</i>	<i>1.4.1981</i>			
		<i>Missing</i>	<i>Cambridge University Collection - Woody Point to Monks Bay</i>	x12	<i>RC8-DS 114-125</i>	<i>1.4.1981</i>			
		<i>Missing</i>	<i>Cambridge University Collection - Monks Bay to Shanklin</i>	x9	<i>RC8-DS 126-134</i>	<i>1.4.1981</i>			
		<i>Missing</i>	<i>Cambridge University Collection - Whale Chine to St. Catherine's Point</i>	x9	<i>RC8-DS 84-95</i>	<i>1.4.1981</i>			
001	001/008	Colour photographs and negatives - white envelopes	J.N. Hutchinson - Monks Bay, Isle of Wight	x7 (different images)	not given	24.7.1990			
001	001/009	Geol. Note book	Blue note book with Isle of Wight, detailing fieldtrips	x1	not given	1976-1983			
001	001/010	Geol. Note book	Buff note book, detailing references	x1	not given	Easter 1965			
001	001/011	Geol. Note book	Brown note book, detailing Monks Bay diagrams, St. Catherine's Point and Knowles Farm	x1	not given	From 1990			

PROFESSOR J.N. HUTCHINSON DATA COLLECTION – ISLE OF WIGHT

KW2010 374 NGRC Box Number	LUPD Reference Number	Item	Description	Quantity	Item Ref. (if given)	Date of publication (if given)	NLD landslide number and name	Grid ref Easting	Grid ref Northing
001	001/012	Vertical shot negatives	Cambridge University Collection - Coastal cliff vertical shots	x13 (different images)	RC CP series	4.5.1977			
001	001/012	<i>Missing</i>	<i>Cambridge University Collection - Binnel Point to Knowles Farm</i>	<i>x7</i>	<i>RC8-BS 78-84, SZ 529760 - 496753</i>	<i>4.5.1977</i>			
001	001/012	<i>Missing</i>	<i>Cambridge University Collection - Blackgang Chine</i>	<i>x1</i>	<i>RC8-BS 85, SZ 484771</i>	<i>4.5.1977</i>			
001	001/012	Vertical shot negative	Cambridge University Collection - Watershoot Bay	x1	RC8-BS 91, SZ 496753	4.5.1977			
001	001/013	IOW map: 1:50,000 sheet	Height flight showing flight runs and scale	x1	No. 196	2.3.1980			
001	001/014	Correspondence, invoices, yellow folder	Correspondence relating to photographs and copyright details of photographs taken - air surveys, sorties and photogrammetry - M.P. Chandler and Huntings Surveys Ltd, Fairey Surveys Ltd, Meridian Airmaps Ltd	x1	not given	1979-1981			
001	001/014	Correspondence, invoices, yellow folder	Correspondence relating to photographs and copyright details of photographs taken - air surveys, sorties and photogrammetry - M.P. Chandler and Huntings Surveys Ltd, Fairey Surveys Ltd, Meridian Airmaps Ltd	x1	not given	1979-1981			

PROFESSOR J.N. HUTCHINSON DATA COLLECTION – ISLE OF WIGHT

KW2010 374 NGRC Box Number	LUPD Reference Number	Item	Description	Quantity	Item Ref. (if given)	Date of publication (if given)	NLD landslide number and name	Grid ref Easting	Grid ref Northing
001	001/015	Historical photographic prints, B/W, brown envelopes	Blackgang Chine, Luccombe. Ventnor, Freshwater cliffs, Isle of Wight. British Library. M. Matthews comments on Luccombe chine at 1976. Luccombe 20.5.1839	x5 different views	not given	1840, 1846, 1976, 20.5.1839			
001	001/016	Colour photographs, scale 1:7000 approx map produced from air photographs and section	Luccombe Bay from Luccombe Chine landslip. Lower Greensand along the coast between Shanklin and Dunnose. Geol. and Geomorphological map of landslip. Detailing slope failure. M. Matthews	x2	not given	1968, 1975,			
001	001/017	Photographic prints and Ordnance Survey map	South View House, Undercliff. Engraving of the landslip. Map showing Gore Cliff. Letter from Isle of Wight County Council	x1	not given	1860. 1977.			
001	001/018/01	Box of photographic reprints - Yellow Kodak box - Oblique photos	Aerofilms Ltd - Ventnor to Shanklin (A)	x10	390248-390266	9.5.1980			
001	001/018/02	Box of photographic reprints - Yellow Kodak box - Oblique photos	Aerofilms Ltd - Whale Chine to Shanklin	x23 different views	390188-390211	9.5.1980			

PROFESSOR J.N. HUTCHINSON DATA COLLECTION – ISLE OF WIGHT

KW2010 374 NGRC Box Number	LUPD Reference Number	Item	Description	Quantity	Item Ref. (if given)	Date of publication (if given)	NLD landslide number and name	Grid ref Easting	Grid ref Northing
001	001/018/03	Box of photographic reprints - Yellow Kodak box - Oblique photos	Aerofilms Ltd - Coastal photographs - Whale Chine to Binnel (B)	x33 different views	390212-290247	9.5.1980			
001	001/018/04	Box of photographic reprints - Yellow Kodak box - Oblique photos	Aerofilms Ltd - Ventnor to Shanklin (B)	x16 different views	390267-390283	9.5.1980			
001	001/018/05	Box of photographic reprints - Yellow Kodak box - Oblique photos	Aerofilms Limited. Steephill to Binnel	x11 different views	393980-991	9.5.1980			
001	001/018/05	Box of photographic reprints - Yellow Kodak box - Oblique photos	Aerofilms Limited. Old Park to Ventnor		393980-394040	9.5.1980			
001	001/018/06	Box of photographic reprints - Yellow Kodak box - Oblique photos	Aerofilms Ltd. Dunnose to Old Park	x9 different views	394016-040	9.5.1980			
001	001/018/07	Box of photographic reprints - Yellow Kodak box - Oblique photos	Aerofilms Ltd. Cowleaze	x2 different views	393992-93	9.5.1980			
001	001/018/08	Box of photographic reprints - Yellow Kodak box - Oblique photos	Aerofilms Ltd. Ventnor to Shanklin	x1	390255	9.5.1980			

PROFESSOR J.N. HUTCHINSON DATA COLLECTION – ISLE OF WIGHT

KW2010 374 NGRC Box Number	LUPD Reference Number	Item	Description	Quantity	Item Ref. (if given)	Date of publication (if given)	NLD landslide number and name	Grid ref Easting	Grid ref Northing
001	001/019/01	Box of photographic reprints - Yellow Kodak box - vertical photos	Hunting Surveys Ltd. Atherfield Point to St. Catherine's Point	x8	7987-7995	3.3.80			
001	001/019/02	Box of photographic reprints - Yellow Kodak box - vertical photos	Hunting Surveys Ltd. Bonchurch to Shanklin	x6	8011-8016	3.3.80			
001	001/019/03	Box of photographic reprints - Yellow Kodak box - vertical photos	B.K.S. Surveys Ltd. commissioned by Hants County Council. West of Chale	x2	152782-83. Job. No. BKS/2300/569	11.5.1971			
001	001/019/04	Box of photographic reprints - Yellow Kodak box - vertical photos	B.K.S. Surveys Ltd. Commissioned by Hants County Council. Southern coastal area between Luccombe and Blackgang		152544-46, 152556-57, 152600-01, 152633-34, 152717-18, 152663-64, 152724-25. Job. No. BKS/2300/539	11.5.1971			
001	001/019/05	Box of photographic reprints - Yellow Kodak box - vertical photos	RAF. DOE. Location not known	x15	0043-0055. Ref: 543/RAF/964	20.6.1960			
001	001/019/06	Box of photographic reprints - Yellow Kodak box - vertical photos	Ordnance Survey. Undercliff, showing geomorphology changes. Study offshore-seashore-undercliff interactive environment	x44	Ref: APCG/51/48 13.3.1980. Sorties - OS.68.026, OS.69.084	8.4.1968, 8.4.1969			

PROFESSOR J.N. HUTCHINSON DATA COLLECTION – ISLE OF WIGHT

KW2010 374 NGRC Box Number	LUPD Reference Number	Item	Description	Quantity	Item Ref. (if given)	Date of publication (if given)	NLD landslide number and name	Grid ref Easting	Grid ref Northing
002	002/001	Report with colour and b/w photographs also drawing maps	Isle of Wight Rural District Council Coast protection West Wight. Report on Coastline Totland Bay to Norton, Isle of Wight Rural District Council. Lewis & Duvivier Consulting Engineers	x1	No. 1	1973	Grouping on GeolIndex		
002	002/002	Report with drawing maps	Coast protection Sandown Bay Report on coastline within the Urban District. Lewis & Duvivier Consulting Engineers	x1	No. 2	1.2.1974	Grouping on GeolIndex		
002	002/003	Report with colour and b/w photographs also drawing maps	Isle of Wight Rural District Council Coast erosion and cliff slides at Totland Bay Report. Lewis & Duvivier Consulting Engineers	x1	No. 3	1.2.1974	Grouping on GeolIndex		
002	002/004	Supplementary Report and drawing map	South Wight District Council Coast Protection West Wight - Supplementary Report on Further Investigation. Lewis & Duvivier. <i>Coast protection between Totland Bay and Norton Sewer Outfall</i>	x1	No. 4	1.7.1974	Grouping on GeolIndex		
002	002/005	Report and drawings	Report on a slope failure at Shanklin Cliff, February 1967 and recommended stabilisation works. Dr M.E. Barton, Lewis & Duvivier Consulting Engineers for Messrs. Roach Pittis & Co. <i>Slope failure February 1967</i>	x1	not given	1.2.1967	1769 - Shanklin Esplanade	458565	81437

PROFESSOR J.N. HUTCHINSON DATA COLLECTION – ISLE OF WIGHT

KW2010 374 NGRC Box Number	LUPD Reference Number	Item	Description	Quantity	Item Ref. (if given)	Date of publication (if given)	NLD landslide number and name	Grid ref Easting	Grid ref Northing
002	002/006	Reports and drawings	Report on observations at a treated section of the A3055 Military Road at Afton Down. Dr M.E. Barton, Lewis & Duvivier Consulting Engineers for Messrs. Roach Pittis & Co. for Isle of Wight County Council	x3	not given	12.1980- 01.1981	1760 - Afton Down	436043	85552
002	002/007	Reports and drawings	Report on the A3055 Military Road, Mudflow Development 3-400m N.W. Of Shippards Chine, Compton Bay. Dr M.E. Barton, Lewis & Duvivier Consulting Engineers for Isle of Wight County Council	x1	not given	1.11.1981	16185 - Shippards Chine	437776	84092
002	002/008	Guide	Transport in Hampshire and the Isle of Wight Pub. No. 2, A Guide to the Records	x1	No.2 pp.23	1973			
002	002/009	Report and b/w photographic prints	Solent bank, Pot bank and Prince Consort dredging, Hydraulics Research Station	x1	Report No. EX770	1.3.1977			

PROFESSOR J.N. HUTCHINSON DATA COLLECTION – ISLE OF WIGHT

KW2010 374 NGRC Box Number	LUPD Reference Number	Item	Description	Quantity	Item Ref. (if given)	Date of publication (if given)	NLD landslide number and name	Grid ref Easting	Grid ref Northing
002	002/010	Report on conference papers	Land Movement and Coast Protection, Sir A. Boxer. Solent Protection Society. Conference papers relating to the problems associated with the coastline, 50 year coast defence programme. 17-18 April 1985. <i>Report also covers Christchurch, Highcliffe-on-Sea, Christchurch, Holderness Coast Protection Project</i>	x1	not given	17 & 18.4.1985			
002	002/011	Site Investigation Report, borehole records, lab test results, drawings	Report on Site Investigation, West Wight Sewerage, Lemon & Blizard, Engineers for Isle of Wight Rural District Council	x1	not given	28.2.1977			
002	002/012	Newspaper cuttings	Military Road men keep eye on cliffs. Isle of Wight County Press. 9.1.1981. Military Road to Reopen. The News. 4.2.1981	x1	not given	9.1.1981 and 4.2.1981			
002	002/013	Field Guide	Some Coastal Landslide of the Southern Isle of Wight. J.N. Hutchinson. Wessex and the Isle of Wight Field Guide prepared to accompany the Annual Field Meeting held at Southampton and Cowes, Quaternary Research Association	x1	pp.123-135	21- 25.4.1987			

PROFESSOR J.N. HUTCHINSON DATA COLLECTION – ISLE OF WIGHT

KW2010 374 NGRC Box Number	LUPD Reference Number	Item	Description	Quantity	Item Ref. (if given)	Date of publication (if given)	NLD landslide number and name	Grid ref Easting	Grid ref Northing
002	002/014	Conference proceedings	Conference on problems associated with the coastline, Newport, Isle of Wight, A review of current research on the coastal landslides forming the undercliff of the Isle of Wight with some practical implications. J.N. Hutchinson, M.P. Chandler & E.N. Bromhead	x2	not given	1.4.1985			
002	002/015	Copy of paper Public Record Office and transcription	Public Record Office The Sanitary Acts Ventnor Local Board - relating to Esplanade and footpath in Bath Road	x1	11102	4.2.1875			
002	002/016	Journal and plates	The cliff-founder and landslide at Gore Cliff. G.W. Colenutt. Proceedings of the Isle of Wight History and Archaeological Society. Landslide at Gore Cliff, 26.7.1928	x1	Vol. 1, No. 9, pp.561-570	23.7.1929	1725 - Rocken End	449468	76016
002	002/016	Journal	Earth-falls at the Undercliff, Isle of Wight. Niton cliff fall 23.1.1840	x1	No. II	1.3.1840	Grouping on GeolIndex		
002	002/017	Paper	The harbour and piers of Ventnor 1843-1914. Example of the personalised studies in local history. E.D.G. Payne. Ventnor and District Local History Society	x1	pp. 1-8	1.5.1980	Grouping on GeolIndex		
002	002/018	Map	Isle of Wight sea defences at Totland Bay	x1	1412A/42	1.6.1969			

PROFESSOR J.N. HUTCHINSON DATA COLLECTION – ISLE OF WIGHT

KW2010 374 NGRC Box Number	LUPD Reference Number	Item	Description	Quantity	Item Ref. (if given)	Date of publication (if given)	NLD landslide number and name	Grid ref Easting	Grid ref Northing
002	002/018	Map	Isle of Wight Plan - Colwell Bay to Warden Point	x1	1412A/47/1	1.8.1973			
002	002/018	Map	Isle of Wight - Coast protection West Wight site investigation	x1	1412A/46/2	1.8.1973			
002	002/019	Book	Industrial archaeology in the Isle of Wight. A. Insole and A. Parker, Isle of Wight Museums Publication	x1	First edition pp. 1-48	1979			
002	002/019	Guide Book	The Isle of Wight. B. Daley and A. Insole. Geologists Association Guide	x1	No. 25	1984			
002	002/019	Guide Book	The Isle of Wight. D. Curry, F.A. Middemiss and C.W. Wright. Geologists Association Guide	x1	No. 26	1966			
002	002/019	Book with photographs	Back of the Wight. F. Mew. <i>Personal historical record circa 1933</i>	x1	not given	1953			
002	002/019	Book with drawings	Niton, Isle of Wight its Undercliff & neighbourhood. W.H. Bartlett, Royal Academy	x1	not given	1927	Grouping on GeolIndex		
002	002/020	Report and drawings red folder	Foothills by-pass, Tuen Mun. Introductory Report to Scott Wilson Kirkpatrick (Hong Kong) Ltd on geotechnical appraisal of slope works (Area 19 chiefly). J.N. Hutchinson	x1	not given	1996 & 1997			

PROFESSOR J.N. HUTCHINSON DATA COLLECTION – ISLE OF WIGHT

KW2010 374 NGRC Box Number	LUPD Reference Number	Item	Description	Quantity	Item Ref. (if given)	Date of publication (if given)	NLD landslide number and name	Grid ref Easting	Grid ref Northing
002	002/021	Rainfall data	Met. Office - M.P. Chandler	x1	not given	1980-1983			
002	002/022	Proceedings. Survey report & b/w photographs, buff envelope	A structural and lithostratigraphic survey of the Albian outlier forming the Southern Downs of the Isle of Wight - M.P. Chandler and R.D. Curtis. Paper for the Geologists Association	x1	not given	1985			
002	002/023	Book (showing reprints of the Great Cliff Fall)	Botany, birds, bugs and Barrows, Isle of Wight - showing the Great Cliff Fall at Windy Corner, 26 July 1928 - A.L. Hutchinson. Natural History and Archaeological Society. Great Cliff Fall at Windy Corner 26.7.1928	x1	not given	1969	1725 - Rocken End	449468	76016
002	002/024	Report, maps, drawings, correspondence red folder	Vibroseis survey 1981, CDP locations, coastal landslides forming the Undercliff Isle of Wight	x1	not given	1981			
002	002/025	Historical newspaper articles/press cuttings, orange folder	Isle of Wight newspaper articles dealing landslip damage to properties, landslip prone slopes, subsidence preventative and corrective measures, local opinions and solutions. Geological descriptions of the Isle of Wight	x1	not given	1872-1989			

PROFESSOR J.N. HUTCHINSON DATA COLLECTION – ISLE OF WIGHT

KW2010 374 NGRC Box Number	LUPD Reference Number	Item	Description	Quantity	Item Ref. (if given)	Date of publication (if given)	NLD landslide number and name	Grid ref Easting	Grid ref Northing
002	002/026	Proceedings	Simple and economical instrumentation and warning systems for landslides and other mass movements. Dr R.K. Bhandari. Fourth International Symposium, 16-21 September 1984	x1	VII (b)	1984			

PROFESSOR J.N. HUTCHINSON DATA COLLECTION – ISLE OF WIGHT

KW2010 374 NGRC Box Number	LUPD Reference Number	Item	Description	Quantity	Item Ref. (if given)	Date of publication (if given)	NLD landslide number and name	Grid ref Easting	Grid ref Northing
003	003/001	Correspondence, forms, fiscal information, NERC Diskette (orange folder)	Statistical information , research grant application with NERC, application with local authorities, Isle of Wight. Relating to Ventnor and the Undercliff. NERC research application entitled Engineering Geology and Geomechanics of the coastal landslides forming the Undercliff of the Isle of Wight	x1	not given	1982-1984			
003	003/002	Undergraduate project report with photographs and maps	Geological and geotechnical report on southeast Isle of Wight: geotechnical study of the eastern extremity of the Undercliff (The Landslip) Marcus C. Matthews. BSc. Dissertation, Portsmouth Polytechnic	x1	not given	1977	1717 - Ventnor	457378	77837
003	003/003	Sea level changes data	Sea level changes along the Atlantic coast of France	x1	not given	1973 & 1990			
003	003/004	Report and maps	A reconnaissance of coastal landslides in the Isle of Wight, J.N. Hutchinson. Building Research Station	x2	Note: EN 11/65	1965			
003	003/005	Report	The Pleistocene sea-level and neotectonic history of the eastern Solent, Southern England. Phil. Transactions of The Royal Society of London	x1	ISSN 0080-4622, Vol. 328, pp. 425-477 number 1249	15.6.1980			

PROFESSOR J.N. HUTCHINSON DATA COLLECTION – ISLE OF WIGHT

KW2010 374 NGRC Box Number	LUPD Reference Number	Item	Description	Quantity	Item Ref. (if given)	Date of publication (if given)	NLD landslide number and name	Grid ref Easting	Grid ref Northing
003	003/006	Report	Geological and shallow subsurface geophysical investigations in the Western Approaches to the English Channel , NERC Institute of Geological Sciences	x1	70/3	1970			
003	003/007	Confidential Report and diagrams	Report on an investigation, of the fundamental nature of the landslips, consequent on the development of deep fissures in Whitwell Road. A.H. Toms, British Transport Commission	x1	not given	1955	1719 - Steephill/Binnel Point	454789	77284
003	003/008	Conference proceedings	A review of current research on the coastal landslides forming the Undercliff of the Isle of Wight with some practical implications. J.N. Hutchinson, M.P. Chandler , E.N. Bromhead. Conference on problems associated with the coastline	x1	not given	1.4.1985	Grouping on GeolIndex		
003	003/009	Symposium report	Instrumentation and warning systems for research and complex slope stability problems, G. Pilot. IV International Symposium on Landslides, Toronto	x1	not given	1.9.1984			
003	003/009	Symposium report	Assessment of relative slide hazard within a large pre-existing coastal landslide at Ventnor, Isle of Wight. M.P. Chandler and J.N. Hutchinson. IV International Symposium on Landslides, Toronto	x1	Part 2, pp. 517-522	1.9.1984			

PROFESSOR J.N. HUTCHINSON DATA COLLECTION – ISLE OF WIGHT

KW2010 374 NGRC Box Number	LUPD Reference Number	Item	Description	Quantity	Item Ref. (if given)	Date of publication (if given)	NLD landslide number and name	Grid ref Easting	Grid ref Northing
003	003/010	Report paper	Molluscan and plant biostratigraphy of some Late Devonian and Flandrian deposits in Kent. M.P. Kerney, R.C. Preece and C. Turner	x1	Vol. 291 B1044	20.11.1984			
003	003/011	Report and photographs	The sedimentology and sequence stratigraphy of a Lower Cretaceous tide and storm-dominated clastic succession, Isle of Wight. G. Wach and A. H. Ruffell. IAS Field trip	x1	not given	1990			
003	003/012	Abstract	Waves at Shambles Light Vessel, Portland Bill, during 1968, L. Draper, Institute of Oceanographic Sciences	x1	Pergamon Press Ltd., Oxford	1977			
003	003/012	Proceedings	Evidence of a high Middle Pleistocene sea-level from estuarine deposits at Bembridge, Isle of Wight, D.T. Holyoak and R.C. Preece. Proc. Geological Association	x1	94, (3), pp. 321-244	1983			
003	003/012	Proceedings	The Free Degradation of London Clay Cliffs, J.N. Hutchinson. Imperial College. Proceedings of the Geotechnical Conference. Oslo 1967	x1	Vol. 1	1967			

PROFESSOR J.N. HUTCHINSON DATA COLLECTION – ISLE OF WIGHT

KW2010 374 NGRC Box Number	LUPD Reference Number	Item	Description	Quantity	Item Ref. (if given)	Date of publication (if given)	NLD landslide number and name	Grid ref Easting	Grid ref Northing
003	003/012	Journal	New discoveries concerning the geology of the central and eastern parts of the English Channel, D. Curry & A.J. Smith. Phil. Trans. Royal Society London	x1	279, pp. 155-167	1975			
003	003/012	Journal	Geological bibliography for the English Channel (Part 2), D. Hamilton, P. Hommeril, C. Larssonneur and A.J. Smith. Sphil. Trans. Royal Society London		279, pp. 289-295	1975			
003	003/012	Journal	The origin and sedimentary history of the Hurd Deep, English Channel with additional notes on other deeps in the Western English Channel, D. Hamilton and A. Smith. Bibliographie geologique de la Manche, BRGM	x1	not given	1972			
003	003/012	Journal	Bibliographie geologique de la Manche. A.J. Smith, D. Hamilton, D.N. Williams, P. Hommeril	x1	not given	1972			
003	003/012	Journal	The structure and geological evolution of the English Channel, A.J. Smith and D. Curry. Royal Society London	x1	279, pp. 3-20	1975			
003	003/012	Proceedings	Cliff Recession on the Isle of Wight SW Coast, J.N. Hutchinson, M.P. Chandler and E.N. Bromhead, Proc. 10th International. Conf. Soil. Mech. Found. Engrg. Stockholm	x1	Vol.1, pp. 429-434	1981			

PROFESSOR J.N. HUTCHINSON DATA COLLECTION – ISLE OF WIGHT

KW2010 374 NGRC Box Number	LUPD Reference Number	Item	Description	Quantity	Item Ref. (if given)	Date of publication (if given)	NLD landslide number and name	Grid ref Easting	Grid ref Northing
003	003/012	Proceedings	Earth Falls at the Undercliff in the Isle of Wight, W. Richman. Institute of Civil Engineers	x1	not given	1840	1716 - Ventnor (Undercliff)	456031	77787
003	003/012	Proceedings	The geology of the Western Approaches of the English Channel IV. A recently discovered Variscan granite west-north-west of the Scilly Isles. A.J. Smith, A.H. Stride and W.F. Whittard. 17th Symposium of the Colston Research Society held in the University of Bristol, 5-9 April 1965	x1	not given	1965			
003	003/013	Abstract	The high wave activity on the English Channel coasts Tuesday 13 February 1979. L. Draper. Institute of Oceanographic Sciences	x1	not given	22.2.1979			
003	003/013	Abstract	Geological Report on Road Subsidence at Whitwell Road, Ventnor Isle of Wight, F. Edmunds and G. Bisson. Geological Survey of Great Britain	x1	not given	1954	1719 - Steephill/Binnel Point	454789	77284
003	003/013	Abstract	Pier Street Ventnor, Isle of Wight. Geotechnical Consulting Group	x1	PK/1812	1.8.1983			

PROFESSOR J.N. HUTCHINSON DATA COLLECTION – ISLE OF WIGHT

KW2010 374 NGRC Box Number	LUPD Reference Number	Item	Description	Quantity	Item Ref. (if given)	Date of publication (if given)	NLD landslide number and name	Grid ref Easting	Grid ref Northing
003	003/014	Report, photographs and drawings	An investigation of a coastal landslip on the Undercliff, Isle of Wight, Final Year Project, D.C. Street, Dept of Civil Engineering, University of Surrey	x1	pp.22-69	1981	1716 - Ventnor (Undercliff)	456031	77787
003	003/015	Abstract	Assessment of relative landslide hazard of the Undercliff	x1	pp.464-480	1980?			
003	003/015	Report	Waves at the Owers Light Vessel, Central English Channel, L. Draper and H.C. Shellard. Meteorological Office, Bracknell	x1	Report No. 46	1971			
003	003/015	Proceedings	The stratigraphy of the post- Palaeozoic sequences in part of the western Channel. P. Andreieff, P. Boysee, D. Curry, B.N. Fletcher, D. Hamilton, C. Monciardini and A.J. Smith. Phil. Trans. Royal Society, London	x1	279. pp. 79-97	1975			
003	003/015	Journal	The Molluscan fauna of an early postglacial tufa at Totland, Isle of Wight. R.C. Preece. Imperial College, London.	x1	30, pp. 35-42	1979			
003	003/015	Journal	Volcanoes and Tectosphere, H. Aoki and S. Iizuka Takai University	x1	not given	1976			

PROFESSOR J.N. HUTCHINSON DATA COLLECTION – ISLE OF WIGHT

KW2010 374 NGRC Box Number	LUPD Reference Number	Item	Description	Quantity	Item Ref. (if given)	Date of publication (if given)	NLD landslide number and name	Grid ref Easting	Grid ref Northing
003	003/016	Symposium paper	Geological evolution of the western English Channel and its relation to the nearby continental margin, D. Curry, D. Hamilton and A.J. Smith. ICSU/SCOR Working Party 31 Symposium, Cambridge 1970. Institute of Geological Sciences Report	x1	No. 70/14, pp. 129-142	1971			
003	003/016	Proceedings	A coastal landslip. W.H. Ward. Proceedings of the 2nd International Conference on Soil Mechanics and Foundation Engineering, Rotterdam, 1948	x1	Vol. II, pp.33-38	1948			
003	003/016	Proceedings	Damage to slopes produced by seepage erosion in sands. J.N. Hutchinson. Landslides and Mudflows Reports of Alma ATA International seminar October 1981	x1	pp.250-268	1.10.1981			
003	003/017	Historical eye witness letter and b/w photographs	Recording eye witness account of landslide 26 July 1928 at Chale beach. Letter from H.J. Watson to G.W. Colenutt. Photographs detailed in letter. Landslide 26.7.1928	x1	not given	18.1.1929	1725 - Rocken End	449468	76016
003	003/017	Historical Book extract	Outlines of the geology of England and Wales. Rev. W.D. Conbeare and W. Phillips. <i>Section on the Isle of Wight</i>	x1	Part 1	1822			

PROFESSOR J.N. HUTCHINSON DATA COLLECTION – ISLE OF WIGHT

KW2010 374 NGRC Box Number	LUPD Reference Number	Item	Description	Quantity	Item Ref. (if given)	Date of publication (if given)	NLD landslide number and name	Grid ref Easting	Grid ref Northing
003	003/017	Historical record	The history of imbanking and draining of rivers fens and marshes. W. Dugdale. Records, manuscripts and other authentic testimonies. London.	x1	pp.16	1722			
003	003/018	Table	Comparison of levels, Ventnor. Taken from report by A. H. Toms	x1	not given	1955			
003	003/018	Table	Table 2 - Stratigraphic Outline for the Undercliff	x1	not given	not given			
003	003/018	Scale	Whitecliff Bay and Alum Bay. Coastal sections of Eocene and Oligocene Beds (after Geological Survey Memoir)	x1	not given	not given			
003	003/018	Table	Table 1: Main periods of periglacial activity (frost shattering, solifluction, thermal contraction cracking, etc.) in Britain (largely after West 1969 and Bowen et.al. 1986)	x1	not given	not given			
003	003/018	Table	Table 1 - Solid formations in the Isle of Wight	x1	not given	not given			
003	003/018	Scale	Scale of diagrams at 7 stages. Upper Greensand debris	x1	not given	not given			
003	003/019	Scaled drawings by hand	Knowle's Farm - Sites of Piezometers - lower slopes - (showing depths in metres)	x1	not given	27.10.1990			

PROFESSOR J.N. HUTCHINSON DATA COLLECTION – ISLE OF WIGHT

KW2010 374 NGRC Box Number	LUPD Reference Number	Item	Description	Quantity	Item Ref. (if given)	Date of publication (if given)	NLD landslide number and name	Grid ref Easting	Grid ref Northing
003	003/019	Scaled drawings by hand	Knowle's Farm - Sites of Piezometers 0 - upper slopes (depths in metres) - Project on Section from sites at St. Catherine's lighthouse	x1	not given	27.10.1990			
003	003/019	Handwritten note	Appendix: The most detailed descriptions of the Upper Greensand strata in the Ventnor area. "A popular guide to the geology of the Isle of Wight"	x1	not given	1882 & 1887			
003	003/020	Unidentified hand drawn map	no description	x2	not given	not given			
003	003/020	Gault and sandrock map	The Landslip, south Isle of Wight. East End, Isle of Wight, part of the Undercliff between Luccombe and Bonchurch. <i>Landslides 1810 and 1818</i>	x1	not given	1810 & 1818, 1862-1980	Grouping on GeolIndex		
003	003/020	Dyeline map	Chale Bay, Fig. 26, plotting landslip years	x1	not given				
003	003/021	Ordnance survey maps	Isle of Wight	x6	not given	1962			
003	003/021	Ordnance survey map	St. Catherine's Point 1:25K	x1	not given	1.10.1928			
003	003/022	Field note book (blue)	J.N. Hutchinson notebook relating to field study near A337	x1	not given	24.7.2001			

PROFESSOR J.N. HUTCHINSON DATA COLLECTION – ISLE OF WIGHT

KW2010 374 NGRC Box Number	LUPD Reference Number	Item	Description	Quantity	Item Ref. (if given)	Date of publication (if given)	NLD landslide number and name	Grid ref Easting	Grid ref Northing
003	003/023	Large pencil drawn maps	1st edition 1862		not given	not given			
003	003/024	Journal	Coastal management on the Isle of Wight, R.G. McInnes, S. Jewell and H. Roberts. The Geographical Journal	x1	Vol. 164, No.3, pp. 291-306	1.11.1998			
003	003/025	Field note book (blue)	J.N. Hutchinson notebook relating to field study and engineering field trip	x1	not given	6.10.1980			
003	003/026	Proceedings	The development of a ground behaviour model for the assessment of landslide hazard in the Isle of Wight Undercliff and its role in supporting major development and infrastructure projects. A.R. Clark, E.M. Lee and R. Moore. Rendel Geotechnics, London. Seventh International Congress International Association of Engineering Geology - Lisbon, Portugal	x1	pp.4901-4913. ISBN 90 5410 503 8	5-9.9.1994			
003	003/027	Report	Part of an account of the geomorphology and mechanics of failure of a stretch of coastal cliffs between Blackgang and St. Catherine's Point, Isle of Wight, C.J. Humphris, 1978/79. BHCE/4	x1	BHCE/4	1978/1979	Grouping on GeolIndex		

PROFESSOR J.N. HUTCHINSON DATA COLLECTION – ISLE OF WIGHT

KW2010 374 NGRC Box Number	LUPD Reference Number	Item	Description	Quantity	Item Ref. (if given)	Date of publication (if given)	NLD landslide number and name	Grid ref Easting	Grid ref Northing
003	003/028	Proposal	Proposal for research to assess coastal landslip potential, Isle of Wight Undercliff, Ventnor. Geomorphological Services Ltd. William Halcrow. J.N. Hutchinson and N.H. Noton	x1	not given	1.9.1987	1716 - Ventnor (Undercliff)	456031	77787

PROFESSOR J.N. HUTCHINSON DATA COLLECTION – ISLE OF WIGHT

KW2010 374 NGRC Box Number	LUPD Reference Number	Item	Description	Quantity	Item Ref. (if given)	Date of publication (if given)	NLD landslide number and name	Grid ref Easting	Grid ref Northing
004	004/001	Lever arch file - Draft paper	A reconnaissance of coastal landslides in the Isle of Wight. J.N. Hutchinson	x1	not given	1976			
004	004/002	Card Index system	Detailing journals, newspapers, maps	x1	not given	18th century-21st century			
004	004/003/01	Folder - Green box file - Conference Proceeding	Residual strengths of clays: comparison of values measured in the laboratory with those derived from the back-analysis of landslides. A.W. Skempton, J.N. Hutchinson, R.J. Chandler and J.F. Lupini. Imperial College. European Soil Mechanics Conference, Brighton, 1979	x1		30.10.1978			
004	004/003/02	Folder - Green box file - Proceeding	The Turbidite Concept in Britain. G. Kelling. University College of Swansea	x1		1978			
004	004/003/02	Folder - Green box file - Journal	An Experiment to Illustrate the Mode of Flow of a Viscous Fluid. W.J. Sollas. University of Dublin. Quat. Journal of the Geological Society	x1	Vol. li, pp. 363-368	August 1895			
004	004/003/03	Folder - Green box file -- Journal	Jointing in the Great Scar Limestone of Craven and its relation to the tectonics of the area. L.R. Wager. Quat. Journal of the Geological Society	x1	Vol. lxxxvii, pp. 392-424	25.8.1931			

PROFESSOR J.N. HUTCHINSON DATA COLLECTION – ISLE OF WIGHT

KW2010 374 NGRC Box Number	LUPD Reference Number	Item	Description	Quantity	Item Ref. (if given)	Date of publication (if given)	NLD landslide number and name	Grid ref Easting	Grid ref Northing
004	004/003/04	Folder - Green box file - Note	Note on "beheading" - near Cowleaze	x1					
004	004/003/05	Folder - Green box file - Proceedings	Calculations of rock-slide velocities. D.C. Banks and W.E. Strohm. Advances in Rock Mechanics. Proc. of Congress of Soils Rock Mechanics. Themes 3-4, Denver ,1974	x1		1.1.1974			
004	004/003/05	Folder - Green box file - Table	Debris Flow - a tentative morphological-behavioural classification prepared for the Engineering Group of the Geological Society of London. Symposium on Mudflows, 13 November 1973. J.N. Hutchinson and D. Bunsen, University of London	x1		1.1.1974			
004	004/003/06	Folder - Green box file - Report	Some considerations on the design of remedial works for unstable slopes with particular reference to the use of back calculated shear strengths. R.H. Beake. Imperial College of Science and Technology. (University of London)	x1		30.8.1978			
004	004/003/07	Folder - Green box file - Report	Coastal landslip potential assessment: Isle of Wight Undercliff, Ventnor. Prepared by Geomorphological Services Ltd for the Department of the Environment	x1		1989	1716 - Ventnor (Undercliff)	456031	77787

PROFESSOR J.N. HUTCHINSON DATA COLLECTION – ISLE OF WIGHT

KW2010 374 NGRC Box Number	LUPD Reference Number	Item	Description	Quantity	Item Ref. (if given)	Date of publication (if given)	NLD landslide number and name	Grid ref Easting	Grid ref Northing
004	004/003	Proposed draft papers	Draft papers	various					
004	004/004	Report	Managing ground instability in urban areas. A guide to best practice. R. McInnes, Centre for the Coastal Environment, Isle of Wight Council	x1	not given	1.9.2000			
004	004/005	Report	The Undercliff of the Isle of Wight. A review of ground behaviour. A summary of ground movement problems in Ventnor and St. Lawrence, 1995. Shows Landslide 1928 photographs and other landslide photos	x1	not given	1995	17816 - Ventnor (Central)	455512	77549
005	005/001/01	Proceedings	Palaeolithic archaeology of the Solent River. F.F. Wenban-Smith & R.T. Hosfield. Lithic Studies Society Occasional Paper	x1	Paper no. 7	2001			
005	005/001/02	Report	Landslide movements affecting the lighthouse at St. Catherine's Point, Isle of Wight. J.N. Hutchinson, E.N. Bromhead, M.P. Chandler	x1	not given	23.9.2001			

PROFESSOR J.N. HUTCHINSON DATA COLLECTION – ISLE OF WIGHT

KW2010 374 NGRC Box Number	LUPD Reference Number	Item	Description	Quantity	Item Ref. (if given)	Date of publication (if given)	NLD landslide number and name	Grid ref Easting	Grid ref Northing
005	005/001/03	Proceedings	A review of current research on the coastal landslides forming the Undercliff, Isle of Wight with some practical implications. Conferences on problems associated with coastline. J.N. Hutchinson, M.P. Chandler and E.N. Bromhead. Conferences on Problems Associated with the Coastline. Newport, Isle of Wight. 17-18 April, 1985	x1	not given	17-18.4.1985			
005	005/001/04	Scientific Report	Climate Change Scenarios for the UK. M. Hulme and G.J. Jenkins, UK Climate Impacts Programme	x1	UKCIP Technical Report No. 1	1.10.1998			
005	005/001/05	Proceedings	Engineering aspects of coastal landslides. A.M. Muir Wood	x1	7421	18.1.1972			
005	005/001/06	BBC web page article	Three injured in hotel landslide – Shanklin	x1	not given	22.3.2001			
005	005/001/07	Report	Drainage evolution of southern English rivers during the Pleistocene. P.L. Gibbard. University of Cambridge	x1	Version 16.5.01	not given			
005	005/001/08	Journal	Deformation, digenesis and the mechanical behaviour of chalk. C.R.I. Clayton and M.C. Matthews. Geol. Soc. Special Publication	x1	No. 29, pp. 55-62	1987			

PROFESSOR J.N. HUTCHINSON DATA COLLECTION – ISLE OF WIGHT

KW2010 374 NGRC Box Number	LUPD Reference Number	Item	Description	Quantity	Item Ref. (if given)	Date of publication (if given)	NLD landslide number and name	Grid ref Easting	Grid ref Northing
005	005/001/09	Paper	Borehole correlation difficulties in unstable coastal slopes between Cowes and Gurnard, Isle of Wight. W. Hodges	x1	pp. 1-10	22.11.2002			
005	005/001/10	Paper and map drawings (brown envelope)	Sediment archives and other sites of known or potential value to the study of the coastal and climatic change in the Solent region	x1	not given	2.9.2001			
005	005/001/10	Proceedings	The Rising Tide. Stress at the Seams: Assessing the Terrestrial and Submerged Archaeological Landscape on the Shore of the Magnus Portus. A. Aberg and C. Lewis. Archaeology and Coastal Landscapes	x1	Part 11. pp. 85-97	1997			
005	005/001/11	Displaced index cards	Referring to papers and journals	x1	not given	not given			
005	005/002/01	Incident correspondence and newspaper articles	Collapse of well at "The Grove" Southgrove Road, Ventnor, Isle of Wight. (J.N. Hutchinson at the inquest of Romaldas Ramunas Girenas (deceased)). Well collapse 4.6.1985	x1	not given	1985	17087 - Southgrove Terrace	456220	77768
005	005/002/02	Report	Wave climate change, indications of simple GCM outputs. A.H. Brampton and C.M. Harford. HR Wallingford	x1	Report TR80	1.3.1999			
005	005/002/03	Report	Bonchurch, Isle of Wight. A random wave physical model investigation. HR Wallingford	x1	Report EX 2347	1.10.1991			

PROFESSOR J.N. HUTCHINSON DATA COLLECTION – ISLE OF WIGHT

KW2010 374 NGRC Box Number	LUPD Reference Number	Item	Description	Quantity	Item Ref. (if given)	Date of publication (if given)	NLD landslide number and name	Grid ref Easting	Grid ref Northing
005	005/002/04	Report	Marine Aggregate dredging. The area involved - 3rd Annual Report. The Crown Estate	x1	not given	21.8.2001			
005	005/002/05	Report	Coastal change, climate and instability. Non-technical summary report. European Commission LIFE project	x1	Env.UK/000510	1997-2000	17803 - Wheelers Bay	456749	77627
005	005/002/06	Geotechnical Report	Undercliff Drive, site investigation data. Ventnor wastewater scheme. Geotechnical Report. Rendel Palmer & Tritton	x1	Volume 1: Report Text and Figures	28.9.2001			
005	005/002/07	Site Investigation Report	National Rivers Authority Bembridge River outfall and Road Bridge, Bembridge. National Rivers Authority. Foundation & Exploration Services Ltd	x1	9013/01	1.5.1992			
005	005/002/08	Conference Programme	International Conference on Instability - Planning and Management, Ventnor, Isle of Wight	x1	Bulletin number 3	20-23.5.1992			
005	005/003/01	Journal	Stratigraphic architecture, relative sea-level, and models of estuary development in southern England: new data from Southampton Water. A.J. Long, R.G. Scaife and R.J. Edwards. Geol. Soc. Publication	x1	0305-8719/00	2000			

PROFESSOR J.N. HUTCHINSON DATA COLLECTION – ISLE OF WIGHT

KW2010 374 NGRC Box Number	LUPD Reference Number	Item	Description	Quantity	Item Ref. (if given)	Date of publication (if given)	NLD landslide number and name	Grid ref Easting	Grid ref Northing
005	005/003/02	Journal	Wootton Quarry study. Solent sea-level record. D.J. Tomalin, R. Loader and R.G. Scaife. English Heritage Publication	x1	not given	not given			
005	005/003/03	Paper	Coastal landslides of the Isle of Wight. J.N. Hutchinson. Imperial College	x1	not given	not given			
005	005/003/04	Proceedings	Assessment of the probability of landslide reactivation: Isle of Wight Undercliff, UK. E.M. Lee, R. Moore and R. McInnes. IAEG Vancouver 1998	x1	not given	1998			
005	005/003/05	Paper	Isle of Wight Undercliff: Landslide Forecast. Isle of Wight Council. Rendel Geotechnics	x1	R/H922/1	1.6.1996			
005	005/003/06	Paper	Chalk-upper Greensand Groundwater Investigation. Report on Hydrogeological Investigation of the Southern Downs Aquifer. P.J. Shaw and M.J. Packman. Southern Water Authority, Isle of Wight Division	x1	not given	1.7.1988			
005	005/003/07	Journal	Drainage evolution in South and East England during the Pleistocene. P.L. Gibbard and L.G. Allen. University of Cambridge	x1	Terra Nova, 6, pp. 444-452	30.3.1974			

PROFESSOR J.N. HUTCHINSON DATA COLLECTION – ISLE OF WIGHT

KW2010 374 NGRC Box Number	LUPD Reference Number	Item	Description	Quantity	Item Ref. (if given)	Date of publication (if given)	NLD landslide number and name	Grid ref Easting	Grid ref Northing
005	005/003/08	Journal	Pleistocene evolution of the Solent River of Southern England. L.G. Allen and P.L. Gibbard. University of Cambridge. Quaternary Science Reviews	x1	Vol. 12, pp. 502-528	1993			
005	005/003/09	Technical Report	Rising to the Challenge. Impacts of Climate Change in the South East in the 21st Century. A Stakeholder Led Scoping Study	x1	not given	1.11.1999			
005	005/003/10	Summary Report	Rising to the Challenge. Impacts of Climate Change in the South East in the 21st Century. A Stakeholder Led Publication	x1	not given	1.11.1999			
005	005/003/11	Journal	Coastal cliff behaviour and management: Blackgang, Isle of Wight. R. Moore, A.R. Clark and E.M. Lee. Rendel Geotechnics. Geohazards in Engineering Geology. Geological Society	x1	15, pp. 49-59	1988	1768 - Blackgang	448973	76639
005	005/003/12	Journal	Coastal Management on the Isle of Wight. R.G. McInnes, S. Jewell and H. Roberts. Royal Geographical Society	x1	Vol. 164, pp. 291-306	3.11.1998			
005	005/003/13	Paper	Coastal stabilisation at Barton-on-Sea. A.M. Muir Wood, Halcrow and Partners. Civil Eng. and Public Works Review	x1	pp. 1401-1402	1.12.1967			

PROFESSOR J.N. HUTCHINSON DATA COLLECTION – ISLE OF WIGHT

KW2010 374 NGRC Box Number	LUPD Reference Number	Item	Description	Quantity	Item Ref. (if given)	Date of publication (if given)	NLD landslide number and name	Grid ref Easting	Grid ref Northing
005	005/003/14	Leaflet	Land stability in Ventnor and you. South Wight Borough Council and Geomorphological Services Ltd	x1	not given	1991			
005	005/003/15	Web site page	BBC web site on Ventnor Piers, Isle of Wight	x1	not given	25.8.2010			
005	005/003/16	Reference list	List of Isle of Wight publications	x1	not given				

PROFESSOR J.N. HUTCHINSON DATA COLLECTION – ISLE OF WIGHT

KW2010 374 NGRC Box Number	LUPD Reference Number	Item	Description	Quantity	Item Ref. (if given)	Date of publication (if given)	NLD landslide number and name	Grid ref Easting	Grid ref Northing
006	006/001	Report - Ring binder	European Commission LIFE project. Coastal change, climate and instability. Final Technical Report Volume 1. Isle of Wight Council	x1	97 EN/UK/00510	1997-2000			
006	006/002	Report - Ring binder	European Commission LIFE project. Palaeo-environmental study areas. Final Technical Report Volume 2. Isle of Wight Council		97 EN/UK/00510	1997-2000			

PROFESSOR J.N. HUTCHINSON DATA COLLECTION – KENT

KW2010452 NGRC Box Number	LUPD Reference Number	Item	Description	Quantity	Item Ref. (if given)	Date of publication (if given)	NLD landslide number and name	Grid Ref Easting	Grid Ref Northing
001	001	Article review	M. J. Bayley, Cliff stability at Herne Bay. Cliff Engineering and Public Works Review. Queens Avenue Slip 1937. Miramar hotel slip February 1953	x1		1.8.1972	1776 - Queen's Avenue 1937. 1777-Miramar	619478 619785	168457 168440
001	002	Journal	A study of a large landslide at Herne Bay, Kent. T. Bromhead, Arup. Landslide of 1883 and Landslide of February 1953	x1	Vol. 7	12- 14.9.1972	1777-Miramar slip	619785	168440
001	003	Folder - Diagrams, charts	Miramar Slip, near Herne Bay landslide. Laboratory measurements			1971-1972	1777- Miramar	619785	168440
001	004	B/W photographs	Aerofilms. Coastal landslip possible Miramar Herne Bay (no description)	x1	A130776	11.6.1964			
001	005	Maps	Herne Bay UDC - Coastal protection drawings	x4		1.5.1968			
001	006	Report	A study of the stability of a large landslide in the coastal London clay cliffs at Herne Bay, Kent. E.H. Bromhead. Landslide of 1883 and landslide February 1953	x1		1.2.1972	1777- Miramar	619785	168440
001	007	Folder - Correspondence, b/w photo, press cutting	Miramar Hotel, Coastal landslip Herne Bay Cliffs. Letters to the Editor. B/W photographs, Kent Messenger. Landslide February 1953	x1	19890/4 & 19890/2 photo refs	14.6.1965	1777 - Miramar	619785	168440

PROFESSOR J.N. HUTCHINSON DATA COLLECTION – KENT

KW2010452 NGRC Box Number	LUPD Reference Number	Item	Description	Quantity	Item Ref. (if given)	Date of publication (if given)	NLD landslide number and name	Grid Ref Easting	Grid Ref Northing
001	008	Folder - Stability analysis	Miramar, Coastal landslip, Herne Bay Cliffs.			4.9.1965	1777- Miramar	619785	168440
001	009	Correspondence	Miramar, Coastal landslip, Herne Bay Cliffs. Ove Arups correspondence, geotechnical investigations			1969-1970	1777-Miramar	619785	168440
001	010	List	Monthly rainfall, Herne Bay, Kent		Vol. 69-70.NS	1.1.1952- 28.2.1953			
001	011	Folder - Field work	Miramar fieldwork, Herne Bay East Cliff - Boreholes. Piezometer readings and street maps			23.1.1968 & 29.9.1967	1777-Miramar	619785	168440
001	012	Folder - sampling programme & correspondence	Site investigations, Boreholes, Miramar, Herne Bay			1963-1964	1777-Miramar	619785	168440
001	013	Folder - site investigation	Microfossil/micro paleontological investigations, Miramar, Herne Bay			1964-1965	1777-Miramar	619785	168440
001	014	Folder - sample results	Particle size distribution in soils, Herne Bay			1964-1965	Grouping in GeoIndex		
001	015	Folder - maps and surveys	Proposed sea defences, angle of landslip recordings. Herne Bay			1962			
001	016	Folder - graph -	Field failure envelope between south of Joss Bay to Abbotscliff			1971-1977			

PROFESSOR J.N. HUTCHINSON DATA COLLECTION – KENT

KW2010452 NGRC Box Number	LUPD Reference Number	Item	Description	Quantity	Item Ref. (if given)	Date of publication (if given)	NLD landslide number and name	Grid Ref Easting	Grid Ref Northing
001	016	B/W photographs	Aero Industrial Photographic/NERC Abbotscliff, Folkestone Warren, showing chalk collapse. Cliff Fall 1988	x2		6.2.1988 & 1.8.88	2022 - Abbots Cliff Fall 1988	627125	138589
001	016	Correspondence	Chalk Cliff Behaviour at Abbotscliff. List of published references	x1		6.12.1988	2022 - Abbots Cliff Fall 1988	627125	138589
001	017	Report	The 1955 landslip movements at Leas Cliff, Folkestone. J.N. Hutchinson	x1		30.8.1967	1871 - Leas Cliff Hall	621886	135307
001	018	Report, maps, plate	Investigation of ground movements at Leas Cliff, Folkestone, Soil Mechanics. Landslip 1955		Report No. 2194/1	1.9.1956	1871 - Leas Cliff Hall	621886	135307
001	019	Report	An investigation of ground movements at Leas Cliff, Folkestone. Soil Mechanics. Landslip 1955		Report No. 2415/1	1.4.1957	1871 - Leas Cliff Hall	621886	135307
001	020	Report and correspondence	A survey of coastal landslides of Kent. J.N. Hutchinson		EN 35/65	1965	Grouping on GeoIndex		
001	021	Report	Further studies of ground movements at Leas Cliff, Folkestone, Kent. Soil Mechanics		7948/02	1.6.1982	1871 - Leas Cliff Hall	621886	135307
001	022	Folder - stability analysis	Leas Cliff, Folkestone, Kent. Landslip 1955			10.2.1987	1871 - Leas Cliff Hall	621886	135307

PROFESSOR J.N. HUTCHINSON DATA COLLECTION – KENT

KW2010452 NGRC Box Number	LUPD Reference Number	Item	Description	Quantity	Item Ref. (if given)	Date of publication (if given)	NLD landslide number and name	Grid Ref Easting	Grid Ref Northing
001	023	Folder - corres and notes	Leas Cliff, Folkestone, Kent. Landslip 1955			1967-1987	1871 - Leas Cliff Hall	621886	135307
001	024	Damaged notes, borehole records, cross sections, report	Landslide Folkestone Warren - Abbotscliff, Kent. Reversal shear box tests on prepared surfaces of Middle Chalk and Gault from Folkestone Warren, Building Research Establishment, Soil Mechanics Division		Internal note no. In 4/65.	1970-1993	?		
001	025	B/W photograph	The Capel Lodge high cliff fall. West of end of High Cliff fall blocking railway cutting. Folkestone Warren subsidences. Geological Society and Museum Library. Cliff fall December 1915	x1		1.12.1915	1774 - Folkestone Warren	625536	138466
001	026	Press cutting	Earth Tremors felt in Hythe. Folkestone Herald. Tremor 18.6.1938	x1		18.6.1938	?		
001	026	Eye witness statement and press cutting	Relating to tidal wave Sandgate beach 20.7.1929		Grid reference 211351	14.9.1980			
001	026	Press cutting/graphs	Riviera area. Folkestone Hythe & District Herald. Rimagraph trace Encombe 1970			15.7.1977	1831 - Sandgate	619910	135294
001	027	Report and maps	Site investigation at Castle Bay, Sandgate Kent		3437/1	1.9.1960	1831 - Sandgate	619910	135294

PROFESSOR J.N. HUTCHINSON DATA COLLECTION – KENT

KW2010452 NGRC Box Number	LUPD Reference Number	Item	Description	Quantity	Item Ref. (if given)	Date of publication (if given)	NLD landslide number and name	Grid Ref Easting	Grid Ref Northing
001	027	B/W photographs	Castle Bay, Encombe, Spring House and Cottage. Landslide 1893. Historical record of slip	x6		1893	1831 - Sandgate	619910	135294
001	028	Conf. Proceedings	Field meeting on the coastal landslides of Kent. J.N. Hutchinson. Geologists Association	x2	Vol. 79, Part 2, pp. 227-237	1-3 July 1966			
001	029	Conf. Proceedings	Geological applications of early large-scale cartography. S.C.A. Holmes. Geologists Association	x1	Vol. 83, part 2, pp. 121-138	1972			
001	030	Journal	Some fields and farms in medieval Kent. A.R.H. Baker. Archaeologia Cantiana	x1	Vol. LXXX	1965			
001	031	Proceedings	Written discussion on a paper taken as read. S.C.A. Holmes. Geologists Association	x1	Vol. 80, part 2, pp. 269-270	1969			
001	032	Journal	Transactions of the South-Eastern Union of Scientific Societies. The denudation of the Weald. H. Dewey. Geological Section	x1		7.6.1929			
001	033	Proceedings	The rural landscape of Kent. S.G. McRae and C.P. Burnham. BA73	x1		1.8.1973			
001	Box file 034	Correspondence, diagrams, b/w photos	Miscellaneous items, relating to coastal landslides in Kent	x1		1916-1970			

PROFESSOR J.N. HUTCHINSON DATA COLLECTION – KENT

KW2010452 NGRC Box Number	LUPD Reference Number	Item	Description	Quantity	Item Ref. (if given)	Date of publication (if given)	NLD landslide number and name	Grid Ref Easting	Grid Ref Northing
001	Box file 034	Article	Sea defence works at Birchington. Extensive use of pre-cast material	x1	No. 504, vol. 43, pp. 189-190	1.10.1962			
001	Box file 034	Eyewitness statement	Subsidence of the ground near Folkestone. J. Lyon	x1		22.12.1785	?		
001	035	Report	Cliff profile development in the London Clay, Isle of Sheppey, Kent. P.J. Burrows	x1		1.5.1979	?		
001	035	B/W photographs - brown envelope	A mudflow in the London Clay of the North Coast of Sheppey. Selection of b/w photographs	x15		circa. 1970s	?		
001	035	Proceedings	The failure and repair of Ridham Dock. R.G. Thompson Lane and G.R. Gregorian. Institute of Civil Engineers	x1	Maritime Paper No.3, Vol 5, Pt II	11.10.1956	?		
001	035	Handwritten notes	Sheppey Cliffs Protection Association			24.6.1980			
001	035	Correspondence	Eastchurch slip, Minster. Cliff Fall on the Isle of Sheppey. Landslip/cliff fall 18.4.1979			24.4.1979	1816 - Barrows Brook W	600925	172946
001	036	B/W photographs	Holly Hill, Kent	x1	KA56	Summer 1965	?		
001	036	B/W photographs	Isle of Harty, Building Research Establishment	x7	65/531 and 65/532	1.8.1965	1825 - Isle of Harty SW	601080	166145

PROFESSOR J.N. HUTCHINSON DATA COLLECTION – KENT

KW2010452 NGRC Box Number	LUPD Reference Number	Item	Description	Quantity	Item Ref. (if given)	Date of publication (if given)	NLD landslide number and name	Grid Ref Easting	Grid Ref Northing
001	036	B/W photographs	High Halstow landslip. Building Research Establishment	x8	64/450	1.7.1965	1779 - High Halstow	577989	175513
001	036	B/W photographs	Landslip at Dunkirk, Kent. Building Research Establishment	x6	65/513	1.7.1965	1845 - Boughton Hill NW	607130	159140
001	037	B/W photographs	Hunting Surveys Ltd. Vertical. Showing landslides at Minster, Isle of Sheppey. <i>(near Paddy's Point and Cliff Cottage)</i>	x6	1270-1275. HSL/Kent/67/22, run 33, print number 1271	22.8.1967	Grouping on Geoindex		
001	038	Report	Sand drain trial High Halstow landslide. A.D.W. Smith, Kent County Council Materials Section	x1	11.RAG/LA49/1	1.6.1972	1779 - High Halstow	577989	175513
001	039	Report	Report on a landslip at High Halstow, Rochester. H. Bowdler, Kent County Council.	x1	11.RAP/LA49/1	1.11.1970	1779 - High Halstow	577989	175513

PROFESSOR J.N. HUTCHINSON DATA COLLECTION – KENT

KW2010452 NGRC Box Number	LUPD Reference Number	Item	Description	Quantity	Item Ref. (if given)	Date of publication (if given)	NLD landslide number and name	Grid Ref Easting	Grid Ref Northing
002	Box file 001	Draft report	A survey of coastal landslides in Kent. J.N. Hutchinson. Building Research Establishment	x1	EN/35/65	1965	Grouping on Geoindex		
002	002	Paper	Engineering aspects of coastal landslides. A.M. Muir Wood. Institute of Civil Engineers	x1	Vol 53, part 2, pp.401-416	1971			
002	003	Publication with b/w prints	East Kent. British landscapes through maps, one-inch sheet 173. A.M. Coleman and C.T. Lukehurst. Geographical Association. <i>B/W photographs showing cliff erosion</i>	x1		1967			
002	004	Report - Draft	A survey of falls in the chalk cliffs of Ramsgate. T.I. Longworth. Imperial College. Cliff Falls 1939-1945	x1		1.7.1970	1864 - Cliffs End, (Thanet)	635137	164279
002	004	Handwritten notes	Ramsgate Chalk Falls			20.3.1971	1864 - Cliffs End, (Thanet)	635137	164279
002	004	Annex of a report with b/w photos and maps	Joss Bay to Pegwell Cove. Maps and b/w photographs. Cliff Fall Pugin Arches, Ramsgate 5.3.1947, Cliff Fall, West Cliff, Ramsgate, 1939-45, Cliff Fall Regency Arches 1939-43, Cliff fall, Paragon, Ramsgate 13.10.1958. Collapse of Retaining Wall, Pegwell Cove 10.3.1943	x1			1772- Hackemdown Point Joss Bay, 1963- East Cliff Ramsgate	639778 639425	170500 166074

PROFESSOR J.N. HUTCHINSON DATA COLLECTION – KENT

KW2010452 NGRC Box Number	LUPD Reference Number	Item	Description	Quantity	Item Ref. (if given)	Date of publication (if given)	NLD landslide number and name	Grid Ref Easting	Grid Ref Northing
002	005	Folder - grafts	Tides in Kent/Sussex	x1		1891-1848, 1997			
002	006	Report - Appendix	Notes on chalk falls on the Kent Coast. <i>Details dates of chalk falls</i>	x1		not dated			
002	007	Press cutting and OS maps	Fall at cliff at St. Margaret's Bay. Dover Express and East Kent News. Cliff Fall 10.1.1905, also reference to Cliff Fall Shakespeare Cliff 5.2.1897			13.1.1905	1866 - South Foreland 1	636070	143246
002	008	Publication	Kingsgate to St. Margaret's Bay. Zone of Micrastrer cor-anginum. PGA	x1	16, 1900. Rowe pp. 289-368				
002	009	Folder. Report and photographs	Report on the stability of a cliff of upper chalk at Kingsgate Castle, Broadstairs, Kent. J.N. Hutchinson. Chalk fall February 1966			14.6.1967 and 31.12.1968	1772-Hackemdown Point Joss Bay	639778	170500
002	009	B/W Photographs	Photographs Geol. Survey 1927 and oblique photograph Aerofilms 1956		A3860 and A64106	1927 and 1956	1772-Hackemdown Point Joss Bay	639778	170500
002	009	Black and white photographs	Wall construction. Kingsgate Castle, Broadstairs, Kent. J.N. Hutchinson. Chalk Fall February 1966	x9	GY2972-GY2963	31.12.1968	1772-Hackemdown Point Joss Bay	639778	170500
002	Box file 010.01	Correspondence and press cutting	A landslide between Walmer Castle and Kingsdown, due to military activity during the war and cold weather. Dover Express.			7.3.1947	?		

PROFESSOR J.N. HUTCHINSON DATA COLLECTION – KENT

KW2010452 NGRC Box Number	LUPD Reference Number	Item	Description	Quantity	Item Ref. (if given)	Date of publication (if given)	NLD landslide number and name	Grid Ref Easting	Grid Ref Northing
			<i>Landslide 6.3.1947</i>						
002	Box file 010.02	Press cutting and map drawing	Sea turned white. Near a village, St Margaret's Bay. The Guardian. Chalk fall March 1970			1.3.1970	?		
002	Box file 010.02	Press cutting and map drawing	Heavy cliff fall at South Foreland lighthouse. Telegraph. Cliff fall 15.1.1979			16.1.1979	1866 - South Foreland 1	636070	143246
002	Box file 010.04	Proposal for rendering Dover port	An account of the stopping of Daggenham Breach. Proposals for rendering the Ports of Dover and Dublin commodious for entertaining large ships. Capt. John Perry	x1		c.1750			
002	Box file 010.05	Correspondence	R.E. Round Down and Seaford, near Dover. Kingston Polytechnic	x1		9.7.1980	?		
002	Box file 010.06	Professional papers	Account of the demolition and removal by blasting of a portion of the Round Down Cliff, near Dover, in January 1843. Lieut, G.R. Hutchinson, Royal Engineers		(Quarto Series), Vo. VI, pp. 188-203	1843	?		
002	Box file 010.07	Letter and references	Shakespeare Marine Works - Chalk cliff behaviour. Information on the Abbots Cliff Fall of January 1988. Transmache-link Channel Tunnel contractors			6.12.1988			

PROFESSOR J.N. HUTCHINSON DATA COLLECTION – KENT

KW2010452 NGRC Box Number	LUPD Reference Number	Item	Description	Quantity	Item Ref. (if given)	Date of publication (if given)	NLD landslide number and name	Grid Ref Easting	Grid Ref Northing
002	Box file 010.08	Book Extract	Slickensides in the chalk, between Deal and Dover. The Geologist		Vol. 3.	1860			
002	Box file 010.09	Book Extract	The middle chalk in Kent		The great rocks of Britain. Vol.2, pp. 371-374	1903			
002	Box file 010.10	Book Extract	The lower chalk of the Kent coast. The Cretaceous rocks of Britain		Vol. II.	1903			
002	Box file 010.11	Conf. Proceedings	Recent research into the coastal landslides at Folkestone Warren, Kent. A.H. Toms. 3rd Int. Conference (1953) Zurich		Vol. II: 288-293, Session 8/20	1953	Grouping on Geindex		
002	Box file 010.12	Proceedings	Folkestone Warren Landslip investigations 1948-1950, Folkestone Warren landslips remedial measures 1948-1954. N.E.V. Viner-Brady. ICE. June 1955	x1	Part II	1.6.1955			
002	Box file 010.13	Field meeting report	The chalk between Folkestone and Dover. Channel Tunnel Project. R.N. Mortimore, Brighton Polytechnic	x1		20.11.1988	Grouping on Geindex		
002	Box file 010.14	Confidential Report	Site investigation and instrumentation in an area of coastal instability near Folkestone, Kent. Soil Mechanics for British Rail	x1		1.3.1983	?		

PROFESSOR J.N. HUTCHINSON DATA COLLECTION – KENT

KW2010452 NGRC Box Number	LUPD Reference Number	Item	Description	Quantity	Item Ref. (if given)	Date of publication (if given)	NLD landslide number and name	Grid Ref Easting	Grid Ref Northing
002	Box file 010.15	Press Cutting	Cliff fall near the Guildford Battery at East Cliff, Dover. Mrs Poole and her six children killed by fall of cliff. Dover Express. Cliff fall 14.12.1810	x1		14.12.1810	18733	632598	141578
002	Box file 010.16	Photocopies of field notebook handwritten landslide entries	Reference of various landslides around Warren Cliff, Abbots Cliff				Grouping on Geoindex		
002	Box file 010.17	News article	An Ice Little Job. Freezing techniques constructing a storm water relief sewer in Folkestone. New Civil Engineer.	x1		9.11.1989			
002	Lever arch file 011.01	Journal	St. Margaret's Bay, Dover. Nature	x1	No. 1837, Vol. 71	12.1.1905			
002	Lever arch file 011.02	Report	The Report by John Smeaton Engineer, upon the Harbour of Dover	x1	pp. 6-8	1769			
002	Lever arch file 011.03	Journal	Erosion and Accretion. Coast South of the Thames. E.R. Matthews, Coast Erosion and Protection. London: Charles Griffin and Co. Ltd	x1	3rd edition	1934			
002	Lever arch file 011.04	Proceeding	Dover: The Ancient Cinque Port: A reminiscence of its history past and present. By An Ancient Freeman	x1	Part I and Part II	1903			

PROFESSOR J.N. HUTCHINSON DATA COLLECTION – KENT

KW2010452 NGRC Box Number	LUPD Reference Number	Item	Description	Quantity	Item Ref. (if given)	Date of publication (if given)	NLD landslide number and name	Grid Ref Easting	Grid Ref Northing
002	Lever arch file 011.05	Journal and Diagrams	Round-Down Cliff. Details of Batteries: used in the Demolition. Charges and Explosion of Mines	x1		?	Grouping on Geindex		
002	Lever arch file 011.06	Journal	Blasting of the Round Down Cliff. Lieut. G.R. Hutchinson Corp of Royal Engineers. Blast March 1843		Vol. VI, pp.188-203	1845	Grouping on Geindex		
002	Lever arch file 011.07	Press article	Great blast on the London and Dover Railway. Destruction of the Round Down cliff by gunpowder. The Illustrated London News. Blast March 1845	x1	Vol. 2, no.40	1.4.1843	?		
002	Lever arch file 011.08	Article	The demolishing of the Round Down Cliff. The New Illustrated Hand-book to Folkestone and its picturesque neighbourhood with a description of the South Eastern Railway. O.S. Nock, Railway Archaeology	x1	pp.187-189	1848			
002	Lever arch file 011.09	Journal	Chalk Falls between Folkestone and Dover. C.E. Lee	x1	pp.531-534	1.10.1940			
002	Lever arch file 011.10	Press article	Historic cinque port threatened by sea of mud. The Observer	x1		7.2.1988			
002	Lever arch file 011.14	Proceedings	The landslips of Folkestone Warren and thickness of the lower chalk and gault near Dover. C.W. Osman. Pr. Geol. Assoc.	x1	28, 59-84	1917	Grouping on GeIndex		

PROFESSOR J.N. HUTCHINSON DATA COLLECTION – KENT

KW2010452 NGRC Box Number	LUPD Reference Number	Item	Description	Quantity	Item Ref. (if given)	Date of publication (if given)	NLD landslide number and name	Grid Ref Easting	Grid Ref Northing
002	Lever arch file 0.11.15	Press article	The cliffs of Dover. The London Evening Standard. Cliff Fall 11.2.1947	x1		12.2.1947			
002	Lever arch file 011.16	Correspondence, colour photographs, maps, press cuttings. Confidential?	Cliffs between Folkestone and Dover. Abbots Cliff tunnel - major cliff fall, January 1988. Also Channel Tunnel project material. See Box 1 ref 001/016			6.2.1988 and 1.8.88			
002	Lever arch file 011.17	Table	Table of all cliff falls, location and dates between Folkestone Warren and St Margaret's Bay				Grouping on Geindex		
002	Lever arch file 011.18	Record	Record of landslips of Folkestone Warren, between 1765-1915	x1		1917	Grouping on Geindex		
002	Lever arch file 011.19	Press article	Fall of Cliff at Leathercoat Point. Dover Express. Cliff Fall 11.11.1918	x1		18.11.10	?		
002	Lever arch file 011.20	Paper with prints	Chalk in embankments and vegetation on the stability of chalk slopes	x1		1940-1963			
002	012	deleted							
002	013	Letter	Ship wreck, Hastings and Bexhill. 1749. P. Marsden	x1		28.3.1990			

PROFESSOR J.N. HUTCHINSON DATA COLLECTION – KENT

KW2010452 NGRC Box Number	LUPD Reference Number	Item	Description	Quantity	Item Ref. (if given)	Date of publication (if given)	NLD landslide number and name	Grid Ref Easting	Grid Ref Northing
002	014	Journal	Coast Erosion and Protection. R.R. Minikin. Chapman and Hall, London. <i>Folkestone Warren</i>	x1		1952			
002	015	Paper	Chalk in cuttings and embankments. A.H. Toms (Abbotscliff and Dover) Cliff fall Dover 1940	x1		1.9.1948			
002	016	Historical record	The history of Imbanking and Draining of Rivers Fens and Marshes both in foreign parts and in this Kingdom	x1		1752			
002	017	Report	Warden Point, Isle of Sheppey, Kent. D.L. Medley. Kingston Polytechnic	x1	BOCE/4	1974			
002	018	Tide Tables	Dover	x1		23.1.1979 & 1865			

PROFESSOR J.N. HUTCHINSON DATA COLLECTION - SUSSEX

KW2010452 NGRC Box Number	LUPD Reference Number	Item	Description	Quantity	Item Ref. If given	Date of publication (if given)	NLD landslide number and name	Grid ref. Easting	Grid ref. Northing
001	001	Report with b/w photographs, maps and diagrams	Cliff erosion in East Sussex. J. Cleeve and R. Williams. <i>Note: Photographs from 1910-1987 showing cliff erosion</i>	x1	Sussex Studies No. 5	16.12.1988	1265 - Birling Gap	555252	96082
001	002	Field excursion report with stratigraphy diagrams and maps	Fourth International Flint Symposium. Field Excursion. Seaford Head, Sussex, Beachy Head, Eastbourne. 10-15 April 1983	x1		15.4.1983			
001	003	Conference report	Visit to sites in the County of East Sussex, 11-13 September 1979. 7th European conference on soil mechanics and foundation engineering. D.B. Charnock	x1		11-13.9.1979			
001	003	Conference report	Visit to sites in the County of East Sussex, 11-13 September 1979. 7th European conference on soil mechanics and foundation engineering. Note for visit to the Lews Road Tunnel	x1		12.9.1979			

PROFESSOR J.N. HUTCHINSON DATA COLLECTION - SUSSEX

KW2010452 NGRC Box Number	LUPD Reference Number	Item	Description	Quantity	Item Ref. If given	Date of publication (if given)	NLD landslide number and name	Grid ref. Easting	Grid ref. Northing
001	004	Field meeting report	Stratigraphy and facies in the Upper Greensand and chalk of Sussex. R. Mortimore. <i>Including photocopy of engraving from mid 18 Century showing inland chalk cave</i>	x1		1.11.1988			
001	005	Report	Stratigraphy of the Upper Cretaceous White Chalk of Sussex. R. N. Mortimore	x1		4.11.1988			
001	006	Report	A guide to the chalk of Sussex and its correlation with the Isle of Wight and Kent. R. N. Mortimore, Brighton Polytechnic Civil Engineering	x1	ISBN 0 904167 37 2	circa 1988			
001	007	Handwritten notes, diagrams, graphs, correspondence	Beachy Head chalk falls			1988 & 1982	Grouping on Geolindex		
001	008	Press cutting	Changing face of Beachy Head. Eastbourne Gazette. <i>Autumn 1960 Cow Gap</i>	x1		12.8.1964	1266 - Cow Gap 1	559610	95916
001	008	Press cutting	Seawall tames the tide. 1974	x1		?	?		

PROFESSOR J.N. HUTCHINSON DATA COLLECTION - SUSSEX

KW2010452 NGRC Box Number	LUPD Reference Number	Item	Description	Quantity	Item Ref. If given	Date of publication (if given)	NLD landslide number and name	Grid ref. Easting	Grid ref. Northing
001	008	Press cutting	Cliffs area on the move again. Evening Argus. <i>Beachy Head</i>	x1		1.12.1966	Grouping on GeolIndex		
001	008	Press cutting	Turn of the century. Eastbourne Gazette. <i>Devil's chimney Beachy Head</i>	x1		17.11.1965	Grouping on GeolIndex		
001	008	Press cutting	Cliff top crashes into sea, Seaford. Cliff collapse 15.7.1986	x1		16.7.1986	17725 - Splash point, Seaford	548956	98128
001	008	Press cutting	Bronze age remains near lighthouse. Erosion over 57 years. Eastbourne Herald. <i>Belle Tout lighthouse OS before 1909</i>	x1		17.2.1968			
001	009	Professional papers	Papers on subjects connected with the duties of the Corps of Royal Engineers. Mining operations at Seaford. Landslide 19.9.1850	x1	Vol. I - New Series	1851	17725 - Splash point, Seaford	548956	98128
001	010	Magazine article	Seaford and the Sea. Sussex County Magazine. Landslide 19.9.1850	x1	Vol. 24, pp. 407-408	1950	17725 - Splash point, Seaford	548956	98128

PROFESSOR J.N. HUTCHINSON DATA COLLECTION - SUSSEX

KW2010452 NGRC Box Number	LUPD Reference Number	Item	Description	Quantity	Item Ref. If given	Date of publication (if given)	NLD landslide number and name	Grid ref. Easting	Grid ref. Northing
001	011	Proceedings	Seaford cliff as it appeared immediately after the explosion. East Sussex County Council: Lewes. F.W. Steer. Landslide 19.9.1850	x1	Vol. 1	1959	17725 - Splash point, Seaford	548956	98128
001	012	Book extract	Monkey's Island, Beachy Head and Birling Gap. Landslide 1848	x1	Tr. Earth. N.H. Soc. Part V, vol 1 (NS) pp.4-21	1884	Grouping on GeolIndex		
001	013	Magazine article	Submerged and reclaimed Coastal Sussex. Sussex County Magazine. E. Harris. Mention of landslide at Seven Sisters 14.4.1914	x1	Vol. 17 pp.260-262	1943	1279 - Seven Sisters	554000	96700
001	014	Book extract	The upper chalk in Sussex. The Cliffs from Beachy Head to Brighton. The Cretaceous rocks of Britain	x1	Jukes-Browne and Hill. Vol. III	1904	Grouping on GeolIndex		
001	015	Report	Changes in the coast-line, especially between Beachy Head and Hastings. Rev. H.E. Maddock. Eastbourne Natural History Society	x1	Vol. 1, pp. 1-6	19.2.1875	Grouping on GeolIndex		
001	016	Book extract	Beachy Head. Eastbourne. J. Royer. <i>Mentions the Charles cliffs</i>			1787	Grouping on GeolIndex		

PROFESSOR J.N. HUTCHINSON DATA COLLECTION - SUSSEX

KW2010452 NGRC Box Number	LUPD Reference Number	Item	Description	Quantity	Item Ref. If given	Date of publication (if given)	NLD landslide number and name	Grid ref. Easting	Grid ref. Northing
001	017	Magazine article	Perils of Beachy Head. A. Beckett. The Sussex County Magazine. <i>Plates and photographs of 1927 and 1787</i>	x1	No. 3, pp. 630-633	1927 & 1787	Grouping on GeolIndex		
001	018	Photocopy of b/w plate	Beachy Head in 1782 and the Charles cliffs 1787	x1		1782 & 1787	Grouping on GeolIndex		
001	019	B/W postcard	Sunset Beachy Head	x1		1920			
001	019	Correspondence	Cliff Falls at Beachy Head. R. Gilbert. 1850, 1895, 1931 Letter dated 1.10.1979. <i>Letter typed up on 'W' drive</i>	x1		1.10.1979	Grouping on GeolIndex		
001	019	B/W photograph	Crow link coastguard station. R. Gilbert, <i>photograph given to JNH</i>	x1		Circa 1895		553710	96822
001	019	B/W photograph	Crow link gap R. Gilbert, <i>photograph given to JNH</i>	x1		1931		553710	96822

PROFESSOR J.N. HUTCHINSON DATA COLLECTION - SUSSEX

KW2010452 NGRC Box Number	LUPD Reference Number	Item	Description	Quantity	Item Ref. If given	Date of publication (if given)	NLD landslide number and name	Grid ref. Easting	Grid ref. Northing
001	019	B/W plate	Beachy Head in the breeding season. Ornithological Rambles in Sussex. A.E. Knox	x1		1850	Grouping on GeolIndex		
001	019	Press article	Belle Tout earthworks. Digging up the past - before it falls into the sea	x1		?			
001	019	B/W plate	Nympha Americana enquiry shipwreck 1747 Seven Sisters	x1		29.11.1749	Grouping on GeolIndex		

PROFESSOR J.N. HUTCHINSON DATA COLLECTION - NORFOLK

KW2010452 NGRC Box Number	LUPD Reference Number	Item	Description	Quantity	Item Ref. (if given)	Date of publication (if given)	NLD landslide number and name	Grid ref Easting	Grid ref Northing
001	Box file 001.1	Report, diagrams	Report on a small landslide at Overstrand on the Norfolk Coast. Building Research Station. Landslide 28.11.1963	x2	Internal Note 15 (1964)	1964	Grouping on GeolIndex		
001	Box file 001.2	Map	OS Geological map Quarter-inch to one mile - Cambridge meeting 1938 - British Association for the Advancement of Science	x1		1938			
001	Box file 001.3	Note Summary	A coastal landslip between Cromer and Overstrand, Norfolk. Building Research Station. Landslide May 1962	x1	Note E1324. A.13/22/7. OS map ref. TG. 23554140	1.6.1963	Grouping on GeolIndex		
001	Box file 001.4	Bulletin	Some aspects of the glacial history of Central Norfolk. F.C. Cox and E.F.P. Nickless	x1	Bull.Geol.Surv GB No. 42, 1972	1972			
001	Box file 001.5	Bulletin	The Chalky Boulder Clays of Norfolk and Suffolk, The Glacial Succession D.F.W. Baden-Powell	x1	Geol. Mag. 1984 (NS) LXXV, pp. 279-296	1974			
001	Box file 001.6	Journal	The Gipping Till: a reappraisal of East Anglian glacial stratigraphy, C.R. Bistow and F.C. Cox	x1	Journal Geol.Soc.London. Vol. 129, 1973, pp. 1-37	1973			

PROFESSOR J.N. HUTCHINSON DATA COLLECTION - NORFOLK

KW2010452 NGRC Box Number	LUPD Reference Number	Item	Description	Quantity	Item Ref. (if given)	Date of publication (if given)	NLD landslide number and name	Grid ref Easting	Grid ref Northing
001	Box file 001.7	Proceedings	Vegetational history of the Early Pleistocene of the Royal Society Borehole at Ludham, Norfolk. R.G. West, University Subdepartment of Quaternary Research, Cambridge	x1	Royal Society. B, Volume 155, pp. 437-453, 1961	15.6.1961			
001	Box file 001.8	Bulletin	The glacial geomorphology of central and north Norfolk, A. Straw. East Midland Geographer	x1	EMG, 5, 1973, pp. 333-354	1973			
001	Box file 001.9	Bulletin	Danish Coastal Cliffs in glacial deposits. Marine shorelines and coastal cliffs in Denmark. A. Schou	x1	Geogr. Ann. Vol 31: 1949: pp. 357-364	1949			
001	Box file 001.10	Bulletin	Cromer Forest Bed Series. R.G. West and D. Gay, Wilson. University of Cambridge	x1	Nature. No. 5022. Vol. 209, pp. 497-498	29.1.1966			
001	Box file 001.11	Bulletin	An assessment of the glacial deposits of north-east Norfolk. G.P. Larwood. Geol. Soc. of Norfolk	x1	No. 16/1	1.12.1968			
001	Box file 001.12	Proceedings	On the cliffs of northern drift on the Coast of Norfolk between Weybourne and Happisburgh. J. Trimmer.	x1	Proc. Geol. Soc IV, Part II, pp. 435-436. 1844	1844			
001	Box file 001.13	Newsletter article - Eyewitness account	Encroachments of the Sea, Happisburgh and Eccles, The Athenaeum. Sea Encroachment 30.3.1867	x1	No. 2058	6.4.1867	?		
001	Box file 001.14	Article	Denudations of Norfolk - Fisher. Geological Magazine	x1	pp. 549	1868			

PROFESSOR J.N. HUTCHINSON DATA COLLECTION - NORFOLK

KW2010452 NGRC Box Number	LUPD Reference Number	Item	Description	Quantity	Item Ref. (if given)	Date of publication (if given)	NLD landslide number and name	Grid ref Easting	Grid ref Northing
001	Box file 001.15	Notices and Extracts	Notice respecting the appearance of fossil timber on the Norfolk Coast. Notices and Extracts from the Minute-book of the Geological Society. Cliff fall 5.2.1825	x1	Vol. 2, p.327	2.12.1825			
001	Box file 001.16	Journal	The storm floods of 1st February 1953. Geography. (Norfolk, Suffolk, North Kent, Thames, Nottingham, Lincs.)	x1	pp.132-189	1.2.1953			
001	Box file 001.17	Journal	On the geologic conditions affecting the coasts of England Wales, with special reference to the coast-line from Lynn to Wells (Norfolk) and from Yarmouth to Eastbourne (Suffolk, Essex, Kent). W. Whitaker. Geological Magazine.	x1	Decade V. Vol. VI	1.2.1909			
001	Box file 001.18	Journal	East Anglian Coast-line levels since Roman Times. C. Green. Antiquity	x1	Version XXXV, 1961, pp. 21-28	1961			
001	Box file 001.19	Article with b/w photographs	No description	x1		1960s??			
001	Box file 001.20	Bulletin	The penultimate of gipping glaciation in north Norfolk. A. Straw. Norfolk and Norwich Nat's Soc.	x1	21, part 1.	10.11.1967			

PROFESSOR J.N. HUTCHINSON DATA COLLECTION - NORFOLK

KW2010452 NGRC Box Number	LUPD Reference Number	Item	Description	Quantity	Item Ref. (if given)	Date of publication (if given)	NLD landslide number and name	Grid ref Easting	Grid ref Northing
001	Box file 001.21	Paper	The movement of beach material and wave action near Blakeney point, Norfolk. J.R. Hardy. Institute of British Geographers	x1	Pub. No.34	1964			
001	Box file 001.22	Geological elevations - diagrams	Geological elevations of the Norfolk Cliffs from Bacton to Cromer made between 1919 and 1931 G. Slater. Traced by J.N. Hutchinson 1963	x1		1919-1931 & 1963			
001	Box file 001.23	Report	The cliffed coastline of Norfolk W. Harper, University of Aberdeen. <i>(Cromer-Happisburgh) Details landslides between this area</i>	x1		1.5.1966	Grouping on GeoIndex		
001	Box file 001.24	Report	Observations on changes in the sea coast of the UK. E.W. Creak, L.F. Vernon-Harcourt, A. Walmesley, W. Whitaker. Rept. British. Ass. Adv.Sci (Southport)	x1	pp. 258-281	1903			
001	Box file 001.25	Newspaper articles. Letters.	Huge cliff fall blocks Cromer beach and Landslides on the Cromer/Overstrand Border. Letters Cromer Urban District Council. Landslides 1962, 1963, 1964, 1973	x1		1962,1963, 1964, 1973	Grouping on GeoIndex		
001	Box file 001.26	Old Map	Cromer lighthouse. Landslip 19.8.1832			19.8.1832	4871 - Lighthouse Hill	623115	341762

PROFESSOR J.N. HUTCHINSON DATA COLLECTION - NORFOLK

KW2010452 NGRC Box Number	LUPD Reference Number	Item	Description	Quantity	Item Ref. (if given)	Date of publication (if given)	NLD landslide number and name	Grid ref Easting	Grid ref Northing
001	Box file 001.27	Report	The coastal landslide of May 1962 in cliffs of pleistocene deposits near Cromer, Norfolk. <i>Landslide 17.5.1962 between Cromer lighthouse and Kirby Hill</i>	x1	Nat. Grid ref. TG 23554140	1962	15220 - Between Target Hill and Kirby Hall	623561	341417
001	Box file 001.27	Report	The coastal landslide of May 1962 in cliffs of pleistocene deposits near Cromer, Norfolk. <i>Detailing historic landslides 1799-1958</i>	x1		1962	15220 - Between Target Hill and Kirby Hall	623561	341417
001	Box file 001.28	Photographs, negatives and report	Photographs and negatives of Cromer landslide near golf course. Short visit report to Cromer. J.N. Hutchinson <i>Landslide 16.12.1973</i>	x1		7.1.1974	Grouping on GeolIndex		
001	Box file 001.28	Press cutting	Half metre cubic yards over Cromer Cliff Eastern Daily Press. <i>Cromer Landslide 16.12.1973</i>	x1		20.12.1973	4882 - Cromer Lighthouse 2	623387	341524
001	Box file 001.28	Press cutting	Huge cliff fall blocks Cromer beach. Eastern Evening News. Cromer <i>Landslide 16.12.1973</i>	x1		20.12.1973	4882 - Cromer Lighthouse 2	623387	341524
001	Box file 001.29	Press cutting	Cliff fall at Cromer. Eastern Daily Press. <i>Cliff fall, Summer 1962</i>	x1		15.1.1963	Grouping on GeolIndex		
001	Box file 001.29	Press cutting	Cromer cliff fall 'bulldozes' beach huts. Eastern Evening News. <i>Cliff fall 10.8.1965</i>	x1		11.8.1965	Grouping on GeolIndex		
001	Box file 001.29	Press cutting	Another Big Cliff Fall in Norfolk. Eastern Daily Press. <i>Cliff fall 23.4.1962 (Golf course)</i>	x1		25.4.1962	Grouping on GeolIndex		

PROFESSOR J.N. HUTCHINSON DATA COLLECTION - NORFOLK

KW2010452 NGRC Box Number	LUPD Reference Number	Item	Description	Quantity	Item Ref. (if given)	Date of publication (if given)	NLD landslide number and name	Grid ref Easting	Grid ref Northing
001	Box file 001.29	Press cutting	Norfolk's descending plateau. Golf course loses half an inch every hour. Eastern Daily Press. Cliff fall 23.4.1962	x1		16.5.1962	Grouping on GeolIndex		
001	Box file 001.29	Press cutting	Cromer golf course loses another slice. Eastern Daily Press. Cliff fall December 1964	x1		10.12.1964	Grouping on GeolIndex		
001	Box file 001.29	Press cutting	Helicopter crew spots cliff fall. Eastern Daily Press. Cliff fall 25.1.1965	x1		27.1.1965			
001	Box file 001.29	Press cutting	Fast underground springs cause big cliff fall. Eastern Daily Press. Cliff Fall 28.11.1963 - Overstrand promenade	x1		29.11.1963	Grouping on GeolIndex		
001	Box file 002 .01	Guide with b/w photographs	The coastline of Flegg from Casiter Point to Hemsby Gap, Norfolk. C. Green, G.P. Larwood and A.J. Martin. Naturalists Society	x1	Vol. XVII, Part V	1953	4894 - Casiter-on-Sea Coast	653000	312000
001	Box file 002.02	Guide with horizontal section	A guide to the pleistocene geology of the Mundesley Cliffs, P.H. Banham and C.E. Ranson, Norfolk & Norwich Naturalists Society	x2	Vol. 21, Part 6	1963-1965	4903 - Mundesley Cliffs	632400	335700
001	Box file 002.03	Guide	Short field meeting on the north Norfolk Coast and a Preliminary Note on the Pleistocene Stratigraphy of North-East Norfolk. R.G. West and P.H. Banham. Geologists Association	x1	Vol. 79, Part 4, 1968, pp. 493-512	1968			

PROFESSOR J.N. HUTCHINSON DATA COLLECTION - NORFOLK

KW2010452 NGRC Box Number	LUPD Reference Number	Item	Description	Quantity	Item Ref. (if given)	Date of publication (if given)	NLD landslide number and name	Grid ref Easting	Grid ref Northing
001	Box file 002.04	Index Cards	References	selection of cards					
001	Box file 002.05	Proceedings	Glacial structures on the North Norfolk Coast. T.J. Dhonau and N.B. Dhonau - Geologists Association	x1	Vol. 74, Part 4, pp. 433-439	1963			
001	Box file 002.06	Guide with diagrams	Ice Ages: Ancient and Modern. Glacitectonic Structures: a general discussion with particular reference to the contorted drift of Norfolk. P.H. Banham. Geological Society Special Issue: Liverpool	x1	No. 6, pp. 69-94	1975			
001	Box file 002.07	Paper	Incursions of the Sea in Norfolk. W. Rye. East Anglian Handbook	x1		1881			
001	Box file 002.08	Report with map since 1824	Report on the survey of coast erosion and reclamation 1953 with map reference since 1824. Norfolk County Council. (The Wash- Caister on Sea)	x1		1.10.1953			
001	Box file 002.09	Correspondence 1976. Maps 1906	Landslides between Cromer and Overstrand. Coastal landslide between Trimingham and Mundesley. Correspondence between J.N. Hutchinson and Dr. G.R. Cooper. Landslide Trimingham 1920	x1		July 1976. Maps 1906	4898 - Mundesley Trimingham Coast	628468	338628

PROFESSOR J.N. HUTCHINSON DATA COLLECTION - NORFOLK

KW2010452 NGRC Box Number	LUPD Reference Number	Item	Description	Quantity	Item Ref. (if given)	Date of publication (if given)	NLD landslide number and name	Grid ref Easting	Grid ref Northing
001	Box file 002.10	Confidential Note	The effect of pore water electrolyte concentration and adsorbed sodium and calcium ions on the liquid limit of a sample of Cromer Till. Building Research Station	x1	Note No. D773	1.11.1961			
001	Box file 002.11	Journal with b/w photos	The East Coast, Mundesley. J.B. Redman. ICE. Cliff fall October 1861	x1	pp.215-218	1864	Grouping on GeolIndex		
001	Box file 002.12	Journal with maps	The upper cretaceous of Norfolk. N.B. Peake and J.M. Hancock. The geology of Norfolk	x1	pp. 293-335	1.5.1974			
001	Box file 002.13	Journal with diagrams	On the Boulder Formation or drift and associated Freshwater Deposits composing of mud-cliffs of Eastern Norfolk. C. Lyell. The London and Edinburgh Philosophical magazine and Journal of Science	x1	Series 3. Vol.16, pp. 345-380	1.5.1840			
001	Box file 002.14	Paper with b/w photos	Coast Erosion in Smallburgh Rural District in Norfolk. C.W. English. Rural District Review.	x1		1.10.1966			
001	Box file 002.15	Proceedings	The glacial succession on the north Norfolk coast. J.D. Solomon. Cambridge: The University Press	x1	2nd edition	1932			
001	Box file 002.16	Handwritten paper	Applied Coastal Geomorphology. J.A. Steers	x1		1971			

PROFESSOR J.N. HUTCHINSON DATA COLLECTION - NORFOLK

KW2010452 NGRC Box Number	LUPD Reference Number	Item	Description	Quantity	Item Ref. (if given)	Date of publication (if given)	NLD landslide number and name	Grid ref Easting	Grid ref Northing
001	Box file 002.17	Journal with diagrams	Boulder clay cliffs. The cliffs between Weybourne and Happisburgh. J.A. Steers.	x1	? 2nd Edition, pp.371-663	1964			
001	Box file 002.18	Handwritten report, diagrams and maps	Report on the Geology 'field trip' to Norfolk and adjacent areas. O.A. Papageorgiou. Imperial College	x1	(unpublished)	23-28 March 1963			
001	Box file 002.19	Press Cuttings and list	Extracts from a book of press cuttings obtained from the Norwich Central Library	x1		1921-1976			
001	Box file 002.19	Press cutting	Holiday Home crashes down in cliff fall. Eastern Daily Press - Cliff fall 23.3.1965	x1		25.3.1965	4898 - Mundesley Trimingham Coast	628468	338628
001	Box file 002.19	Press cutting	Cliff top home threatened. Eastern Daily Press - Cliff fall 1.4.1970	x1		20.4.1970	4898 - Mundesley Trimingham Coast	628468	338628
001	Box file 002.19	Press cutting	House goes over Trimingham cliff - Cliff fall 23.6.1971	x1		24.6.1971	4898 - Mundesley Trimingham Coast	628468	338628
001	Box file 002.19	Press cutting	30,000 tons come down on minefield at Trimingham - Woman escapes by inches. Eastern Evening News. Cliff fall 29.6.1958	x1		30.6.1958	?		

PROFESSOR J.N. HUTCHINSON DATA COLLECTION - NORFOLK

KW2010452 NGRC Box Number	LUPD Reference Number	Item	Description	Quantity	Item Ref. (if given)	Date of publication (if given)	NLD landslide number and name	Grid ref Easting	Grid ref Northing
001	Box file 002.19	Press cutting	Anxiety as massive fall brings cliff edge closer to homes. The Journal. <i>Cliff fall March 1969</i>	x1		7.3.1969	4898 - Mundesley Trimmingham Coast	628468	338628
001	Box file 002.19	Press cutting	Hidden streams a problem. Norfolk News. <i>Overstrand</i>	x1		27.9.1968			
001	Box file 002.20	Paper and diagrams	The coastal changes in the area. J. Hardy. University of Reading. Diagram shows <i>Trimingham 1954. Blakeney-Caister</i>	x1		4.5.1976			
001	Box file 002.21	Paper	Cromer, considered as a watering place; with observations on the picturesque scenery in its neighbourhood. E. Bartell	x1	2nd edn., London: J. Taylor	1806			
001	Box file 002.22	Final Report	Cliff Falls at Trimmingham, Norfolk. J. N. Hutchinson. Dept. Of Civil Engineering, Imperial College	x1	Grid. Ref. 295382 to 271395	1976	Grouping on GeolIndex		
001	Box file 003.01	Map	OS map Mundesley to Happisburgh, pencil markings indicating coastal changes. 1:25K	x1	Sheet TG33				
001	Box file 003.02	Map	OS map Cromer to Overstrand, pencil markings indicating coastal changes. 1:10K	x1	Sheet TG24SW				
001	Box file 003.03	Map	OS map Hunstanton to Brancaster	x1	Sheet TF74				

PROFESSOR J.N. HUTCHINSON DATA COLLECTION - NORFOLK

KW2010452 NGRC Box Number	LUPD Reference Number	Item	Description	Quantity	Item Ref. (if given)	Date of publication (if given)	NLD landslide number and name	Grid ref Easting	Grid ref Northing
001	Box file 003.04	Drawing	Proposed sea defence works, Sheringham Urban District Council	x1		27.12.1967			
001	Box file 003.05	Drawing	Coastal protection schemes, Overstrand. Erpingham R.D.C.	x1		9.7.1958			
001	Box file 003.06	Drawing	Proposed cliff drainage to check erosion - Overstrand	x1		1966-1969			
001	Box file 003.07	Drawing	Trimingham Sea Defences, Record of cliff falls - Erpingham R.D.C. The Dredging and Construction. Co. Ltd	x1		31.10.1973			
001	Box file 003.08	Records list	Record of major slips. Trimingham Sea Defences from 16.10.1973- 16.4.1974	x1		1975	Grouping on GeoIndex		
001	Box file 003.09	Report	Cliff-sections on the north Norfolk coast between West Runton Gap and Weybourne Hope showing structures visible in 1928-32 (Slater) and in 1960 (Dhonau & Dhonau)	x1		1923-32, 1960	4877 - Overstrand- Trimingham Coastline	626070	340007
001	Box file 003.10	Press cuttings and B/W photograph	Cliff collapses Mundesley side of Overstrand. Eastern Daily Press and Eastern Evening News. B/W photograph Eastern Evening News. Cliff fall 24.9.1961			26.9.1961	Grouping on GeoIndex		
001	Box file 003.11	Map	OS map Winterton on Sea to Caister on Sea, pencil markings indicating coastal changes, 1:25K	x1	Sheet TG41				

PROFESSOR J.N. HUTCHINSON DATA COLLECTION - NORFOLK

KW2010452 NGRC Box Number	LUPD Reference Number	Item	Description	Quantity	Item Ref. (if given)	Date of publication (if given)	NLD landslide number and name	Grid ref Easting	Grid ref Northing
001	Box file 003.12	Maps and reference	OS map Sidestand and Trimingham pencil markings indicating coastal changes 1:10K	x1	Sheet TG3 NE				
001	Box file 003.13	Letter and diagram/map	Big collapse - Cromer promenade. Correspondence D.R. Stoddart Cambridge University to J.N. Hutchinson. Cliff fall April 1961	x1		20.7.1983	?		
001	Box file 003.14	News article	Norfolk coast work cost condemned - sea defence structure article. New Civil Engineer	x1		29.2.1996			
001	Box file 003.15	Handwritten notes	Dated landslips and slope failures in Norfolk	x1		1919-1931			
001	Box file 003.16	Handwritten notes	Kessingland Cliff. Scoring analysis done on fine mid-glacial sands	x1		23.10.1964			
001	Box file 003.17	Letter	Coastal landslips and Soil Creep. East Suffolk and Norfolk River Board. Maintenance of cliffed lengths	x1		22.11.1962			
001	Box file 003.18	Press cuttings	Cliff collapse at Overstrand, West Runton, Sidestrand, Mundesley. Cliff Fall: East Runton 22.7.1973; Mundesley 10.11.1929; Kessingland Dec 1961; East Runton 19.8.1970; Sidestrand 24.12.1975; Mundesley 65.9.1968; Frinton- on-Sea, Essex, 11.1.1969; Mundesley 5.9.1968; Gorleston 24.2.1969		No reference of newspaper	various			

PROFESSOR J.N. HUTCHINSON DATA COLLECTION - NORFOLK

KW2010452 NGRC Box Number	LUPD Reference Number	Item	Description	Quantity	Item Ref. (if given)	Date of publication (if given)	NLD landslide number and name	Grid ref Easting	Grid ref Northing
001	Box file. 003.18	Press cutting	Cliff fall puts lifeboat out of service. The Journal. Cliff fall 17.9.1968 <i>Sheringham</i>	x1		20.9.1968	13655 - Coast Lookout	615034	343477
001	Box file. 003.18	Press cutting	Sidestrand cliff collapse. Eastern Daily Press. Cliff fall 24.12.1974	x1		27.12.1974	Grouping on GeolIndex		
001	Box file. 003.18	Press cutting	Cliff fall endangers new sea defences R.D.C. told. Eastern Daily Press. Cliff fall 31.8.1969 <i>Hopton</i>	x1			?		
001	Box file 003.19	News article	Ice age 'drift' upsets the engineers. A Norfolk pipe-laying problem. C. Green	x1		17.3.1967			
001	Box file 003.20	Paper	Coast erosion and protection. E.R. Matthews. London: Charles Griffin and Co. Ltd <i>Cromer-Mundesley</i>	x1	3rd edition. pp. 20-23	1934			
001	Box file 003.21	Index Card	References	selection of cards					
002	001	Correspondence, listing of photographs, OS map showing aerial photo paths	Despatch notes from aerial supplies. Correspondence. Listings of photographs taken 17.7.1963. OS Map showing aerial photo paths. Selection of negatives. Prints of photographs, Cromer-Overstrand. Loose photograph of Cromer coastal landslips 1955	Various		1949-1969			

PROFESSOR J.N. HUTCHINSON DATA COLLECTION - NORFOLK

KW2010452 NGRC Box Number	LUPD Reference Number	Item	Description	Quantity	Item Ref. (if given)	Date of publication (if given)	NLD landslide number and name	Grid ref Easting	Grid ref Northing
002	002	B/W photographs	John Holden Aerial Photographer. Selection of b/w photographs, showing coast around Mundesley area, Happisburgh, North of Cart Gap, Ostend, Bacton	x11	A1885-1895	Circa 1950s			
002	003	Box set - B/W photographs	Cambridge University. Selection of oblique b/w photographs, Overstrand-Trimingham. Cliff falls 1963	Various	AHP 79-100. 286 387	17.7.1963	Grouping on GeolIndex		
002	003	B/W photographs - small box	Cambridge University. Selection of oblique b/w photographs. Cliffs near Weybourne W-E, Sheringham, W. Runton, W. Runton, Cromer-Trimingham. Cliff falls 1963	Various	AHP 6-84	17.7.1963	Grouping on GeolIndex		
002	004	B/W photographs - small box	Cambridge University. Selection of oblique b/w photographs, S.E. Sidestrand-Happisburgh Cliff falls 1963	Various	AHQ 33-79	17.7.1963	Grouping on GeolIndex		
002	004	B/W photographs	Cambridge University. Selection of oblique b/w photographs. Cliffs Trimingham-Mundesley. Cliff falls 1963	Various	AHQ 4-22	17.7.1963	Grouping on GeolIndex		
002	005	B/W photographs	Cambridge University. Selection of oblique b/w photographs. Cliffs between Cromer and Overstrand	Various	ANZ 26-42	17.7.1963			
002	006	B/W photographs	Cambridge University. Selection of oblique b/w photographs-Cliffs between Cromer and Overstrand	Various	BMO 68-86	17.5.1973			

PROFESSOR J.N. HUTCHINSON DATA COLLECTION - NORFOLK

KW2010452 NGRC Box Number	LUPD Reference Number	Item	Description	Quantity	Item Ref. (if given)	Date of publication (if given)	NLD landslide number and name	Grid ref Easting	Grid ref Northing
002	007	B/W photographs	RAF Selection of vertical b/w photographs, Winterton Ness, Sidestrand. Cromer to Overstrand <i>Cromer coastal landslips 1955</i>	x4	0223, 224, 228, 349	6.6.1955	Grouping on GeolIndex		
002	008	B/W photographs	Fairey Surveys Ltd. Selection of vertical b/w photographs, Cromer Overstrand Cliffs	x3	1821-1823	9.4.1968			
002	009	B/W photographs and negatives	J.N. Hutchinson selection of b/w photographs, Cromer-Overstrand	x6		19.5.1969			
002	010	B/W photographs	Photo flights Ltd, Ministry of Housing and Local Government. B/W oblique photographs. Cromer, Norfolk. Taken at high water and after high water. Showing landslides and narrow beach in foreground East of the <i>large landslide October 1947</i>	x4	D.323, D.229, D.321	18.5.1949	15220 - Between Target Hill and Kirby Hill	623570	341438
002	011	B/W photograph	Photo flights photograph, Oblique, Cromer, Norfolk. <i>Landslide October 1947</i>	x1	D.203	13.5.1949	15220 - Between Target Hill and Kirby Hill	623570	341438
002	012	B/W photograph	RAF. B/W photograph Oblique – Cromer	x1		6.8.1958			
002	013	B/W photographs	Hunting. B/W vertical photographs - Just NW of Overstrand to SE of Overstrand	x9	1593-1601	22.4.1963			

PROFESSOR J.N. HUTCHINSON DATA COLLECTION - NORFOLK

KW2010452 NGRC Box Number	LUPD Reference Number	Item	Description	Quantity	Item Ref. (if given)	Date of publication (if given)	NLD landslide number and name	Grid ref Easting	Grid ref Northing
002	014	B/W photographs	OS photographs. B/W vertical photograph - Cromer	x4	67 053	24.4.1967			
002	015	B/W photographs	RAF. B/W vertical photographs - Cromer	x3	3010-3012	27.12.1946			
002	016	B/W photograph	Ridian Airmap. B/W vertical photographs Cromer <i>(note: compare 19.9.1965 photo to photo 8049 at 30.5.1966)</i>	x7	80/65	19.9.1965			
002	017	B/W photographs	Hunting. B/W vertical photographs - Cromer	x5	HSLUK 66498 8047-8052	30.5.1966	4881 - Cromer Lighthouse 1	623304	341567
002	018	B/W photographs	OS. B/W vertical photographs - Cromer	x2	056-057	4.4.1969			
002	019	B/W photographs	Aerofilms. B/W oblique photographs. Trimingham, Norfolk. Landslide 1974	x12		3.3.1974	4898 - Mundesley-Trimingham	628468	338628
002	020	B/W photographs	RAF. B/W vertical photographs. Trimingham, Norfolk	x13	RAF/1140	18.6.1953			
002	021	B/W photographs	RAF. B/W vertical photographs. Trimingham Norfolk	x13	RAF/4692	20.9.1961			
002	022	Reports and figures	Cliff Falls at Trimingham, Norfolk, Reports Nos 1 and 2. With figures. Landslide 1974	x1		27.3.1974	4898 - Mundesley-Trimingham	628468	338628
002	023	Final report b/w photograph	Final report on Cliff Falls at Trimingham, Norfolk. Black and white vertical shot panoramic view. Landslide 1974	x1		1.7.1976 & 3.7.1973	4898 - Mundesley-Trimingham 4884 - Trimingham	628468 628000	338628 339000

PROFESSOR J.N. HUTCHINSON DATA COLLECTION - NORFOLK

KW2010452 NGRC Box Number	LUPD Reference Number	Item	Description	Quantity	Item Ref. (if given)	Date of publication (if given)	NLD landslide number and name	Grid ref Easting	Grid ref Northing
002	024	Letters and map	Overstrand. Letters relating to drawing	x1		24.9.1969			
002	025		deleted						
002	026	Letters	Coastal defences, relating to small landslide, Overstrand. Cliff fall 1963	x6	GS ref 11/131/89, 10/131/159, 19/131/118	11.5.1964	Grouping on GeoIndex		
002	027	Letters and b/w photographs	Cliff fall at Overstrand near Cromer Golf Club. Erpingham Rural District Council. Cliff fall 1962	x1	TG236416	13.1.1964	Grouping on GeoIndex		
002	028	List	Norfolk Maps before 1700	x1		1700			
002	029	Letters and Particle size distribution graph	Bacton to Mundesley Cliffs. Coastal protection scheme. Smallburgh Rural District Council	x3		15.1.1965			
002	030	Letters and minutes	Sidestrand and Trimmingham Cliffs, Norfolk. Proposals for sea defences	x1		26.5.1964			
002	031	Letters	Cromerstrand crag fossils. Norwich Castle Museum	x2		1.5.1964			
002	032	Letters and lists. B/W photo	Cromer to Overstrand landslip. B/W vertical photograph 1955. Correspondence relating to aerial photographs Cliff fall May 1962	x8	RAF/1214 (1955) - TG 236415	1963-1964, 6.6.1955			

PROFESSOR J.N. HUTCHINSON DATA COLLECTION - NORFOLK

KW2010452 NGRC Box Number	LUPD Reference Number	Item	Description	Quantity	Item Ref. (if given)	Date of publication (if given)	NLD landslide number and name	Grid ref Easting	Grid ref Northing
002	033	B/W photographs	Hunting Surveys Ltd. B/W vertical photographs. Sidestrand-Trimingham	x11	8041-8047	30.5.1966			
002	034	B/W photographs	A.E. Coe and Son. B/W oblique photographs. Area East of Shelbourne Contract	x8	C74-1164-1				
002	035	B/W photograph	Cambridge University. B/W oblique photograph. North Norfolk Coastline, possibly east of Cromer	x1	ARS 15	?			
002	036	Colour photographs	GGs Photography. Trimingham Sea Defence Works Phase 2. View of North-South showing landslip. Landslip 14.8.1974	Box		1974-1976	Grouping on GeoIndex		
002	037	B/W photographs	Cambridge University collection. B/W vertical photographs. Sidestrand to Trimingham	x20	RC8-AJ	17.5.1973			
002	037	B/W photographs	Cambridge University collection. B/W vertical photographs. Sidestrand to Trimingham	x9	RC8-AP 248	20.5.1974			
002	037	B/W photograph	RAF. B/W vertical photographs. Sidestrand to Trimingham	x10	RAF/4692	20.9.1961			
002	037	B/W photograph	RAF? B/W vertical photographs. Sidestrand to Trimingham	x6		3.7.1973			
002	038	Press cutting	The long easterly blow worries East Anglia. North Norfolk Coast. The Guardian	x1		21.1.1963			

PROFESSOR J.N. HUTCHINSON DATA COLLECTION - NORFOLK

KW2010452 NGRC Box Number	LUPD Reference Number	Item	Description	Quantity	Item Ref. (if given)	Date of publication (if given)	NLD landslide number and name	Grid ref Easting	Grid ref Northing
002	039	Journal	Slope stability and valley formation in glacial outwash deposits, North Norfolk. K.S. Richards and M.G. Anderson. Earth Surface Processes. (<i>West Runton</i>)	x1	Vol. 3, pp. 301-318 (1978)	1978			

PROFESSOR J.N. HUTCHINSON DATA COLLECTION – UK MISCELLANEOUS

KW2010452 NGRC Box Number	LUPD Reference Number	Item	Description	Quantity	Item Ref. (if given)	Date of publication (if given)	NLD landslide number and name	Grid ref Easting	Grid ref Northing
001	001	Folder - correspondence	Ironbridge C.E. School - landslip. Handwritten notes relating to minutes of meetings. Letters from Salop County Council. Diagrams and maps.	x1		9.6.1969	4336 - Ironbridge School	367453	303507
001	001	Folder - photographs	Vertical b/w aerial photographs. Ironbridge C.E. School	x1	111650, 111650	not given	4336 - Ironbridge School	367453	303507
001	001	Proceedings	The Ironbridge Landslide - A case history of instabilities in carboniferous sediments. B. Denness. Proceedings of a conference on Rock Engineering, Newcastle University. British Geotechnical Society	x1	pp.407-422	4-7.4.1977	4336 - Ironbridge School	367453	303507
001	001	Folder - Report	Quaternary glaciations in the Northern Hemisphere. Bellingham USA. INQUA	x1	Report no 3. project 73/1/24	6-19.7.1975			
001	001	Folder - Essays	Environment, Man and Economic Change. An appraisal of the glacial Lake Lapworth concept. A.D.M. Phillips and B.J. Turton. (<i>Ref. To Ironbridge</i>)	x1	pp. 98-118	1975			
001	001	Folder - photographs	B/W photographs. Ironbridge. J.N Hutchinson (no description)	x5		9.6.1969			
001	002	Letters	Lincolnshire coast. Cleethorpes till. Lincolnshire Archives Committee	x3		11.7.1962			
001	002	Letters and b/w photograph	Suffolk landslide at Bawdsey Cliff. B/W Photograph Landslide circa. 1945			19.12.1966	?		

PROFESSOR J.N. HUTCHINSON DATA COLLECTION – UK MISCELLANEOUS

KW2010452 NGRC Box Number	LUPD Reference Number	Item	Description	Quantity	Item Ref. (if given)	Date of publication (if given)	NLD landslide number and name	Grid ref Easting	Grid ref Northing
001	002	Letters	Suffolk landslide at Felixstowe, in the Spa Pavilion area. Letters from the general public. No local press release. Landslide 28.11.1901			14.4.1965	?		
001	002	Letters	Other Suffolk landslides. Correspondence from local authorities			1962			
001	002	Report	Report on visit to an unstable cliff at Robin Hood's Bay, Yorkshire. Cliff fall 1961	x2	C865	1962	17660 - Old Lance Cliff	495573	505797
001	002	Report	Geological report on the movement of the East Cliff, Whitby. J.E. Hemingway, University of Leeds	x1		27.4.1960	Grouping on GeolIndex		
001	002	Correspondence	East Cliff, Whitby			1960-1962			
001	002	Correspondence and Lab Report	Landslip at Water Trough, Otley A660. Osgodby slip. Laboratory report on a soils investigation. County Council of the West Riding of Yorkshire, Highways and Bridges Department		Grid Ref. 218488	1964	?		
001	002	Letters and diagram	Landslide of Hooks, Holderness, Yorkshire. J.N. Hutchinson		Grid ref. Ca. TA292348 (Sheet 99)	1962	6482 - Hilston	529885	433724
001	002	B/W photograph	ICI Agricultural Division. <i>No other information</i>	x1	712115	12.5.1971			
001	002	Colour photographs	Black Rock, Brighton. Marina Shopping Centre. <i>No other information</i>	x8		23.10.1995			

PROFESSOR J.N. HUTCHINSON DATA COLLECTION – UK MISCELLANEOUS

KW2010452 NGRC Box Number	LUPD Reference Number	Item	Description	Quantity	Item Ref. (if given)	Date of publication (if given)	NLD landslide number and name	Grid ref Easting	Grid ref Northing
001	002	Press cutting	West Lothian landslip, The Times. Landslip 25.11.1963	x1		26.11.1963	?		
001	002	Press cutting	Glenoglehead Perthshire. The Scotsman. Landslide 22.11.1963	x1		23.11.1963	?		
001	002	Letter and news articles.	Large flow slides. English China Clays, Cornwall. Health and Safety Executive			1.2.1993			
001	002	Report and diagrams	Stability and analysis of mudslides						
001	003	Ring binder. Letters, Reports, Particle size grid	Caister to Great Yarmouth. Proposal tidal control and impact to marine wildlife			1954-1964			
001	004	Handwritten notes	Skempton Ranlane decline			5.2.1964			
001	004	Handwritten notes and diagrams	Long-term stability of slopes in over- consolidated clays. F.A. De Lory			1957			
001	004	Handwritten notes and diagrams	The short term stability of slopes in London Clay. P. La Rochelle			1960			
001	004	Cross section and press cutting	Landslips Wenlock Edge. Quarrying threatens to start hillside landslip of forests. Guardian			1973 & 1974			

PROFESSOR J.N. HUTCHINSON DATA COLLECTION – UK MISCELLANEOUS

KW2010452 NGRC Box Number	LUPD Reference Number	Item	Description	Quantity	Item Ref. (if given)	Date of publication (if given)	NLD landslide number and name	Grid ref Easting	Grid ref Northing
001	004	Cross section	Dawes Road, Dunkirk			unknown			
001	004	Graph	Variation in pore pressure ration with time in cuttings in brown London Clay, (after Vaughan and Walbancke 1973)			?			
001	005	Cross sections and Report	Lyme Regis, East Cliff sea wall. Report on the condition of the sea walls at Church Cliffs East Cliff, Lyme Regis. J.N. Hutchinson for West Dorset District Council			16.7.1984	858 - Lyme Regis Church & 833 - East cliff Lyme Regis	334383 334482	92213 92522
001	006	Report and maps	Belfast. Slope problems on the north-east side of Cave Hill, Ban Madigan Heights, Belfast. J.N. Hutchinson and A.W. Skempton, Imperial College, London. For the Ministry of Development			20.3.1970			
001	007	Report and map	Gydynap, Amberley, Stroud, Gloucestershire. Stabilisation report on the site for a house. J.N. Hutchinson for Edward J. Wilson Consulting Engineers		Grid. Ref. S0(32) 845013	16.4.1984			
001	008	Folder - correspondence, diagrams, maps, notebooks	New Railway Underbridge - Raynes Park Station. Borehole records and excavation exposures. Area around Wimbledon Hill			mid 1976			
001	008	Folder - Report	Report on Exploration of Ground Conditions. Proposed J. Sainsbury Store, St. George's Road, Wimbledon. SW19. Ground Explorations Ltd	x1	7503/PT/IAB	1.2.1979			

PROFESSOR J.N. HUTCHINSON DATA COLLECTION – UK MISCELLANEOUS

KW2010452 NGRC Box Number	LUPD Reference Number	Item	Description	Quantity	Item Ref. (if given)	Date of publication (if given)	NLD landslide number and name	Grid ref Easting	Grid ref Northing
001	008	Brown envelope - Borehole records and maps	Kingston Road, Raynes Park. <i>Wimbledon</i>		Grid Ref. TQ 23700	mid 1976			
001	009	B/W photographs and maps	<i>Frinton</i> Essex. 'Cedars' slip Landslip. Sand hook slip. Civil Engineering Dept. Imperial College		GSY 1959-1964	10.1.1967	16868 - Frinton- on-Sea 6	624402	220265
001	009	B/W photographs	<i>Frinton</i> Essex. Seawall under construction. South Cliff, BRE photos			1.6.1962	1436 - Walton on the Naze South Cliffs 16872 - Walton on the Naze South Cliffs	625154 625150	221225 221200
001	010	Letter, cross section and map	East Cliffs, <i>Walton on the Naze</i> , Essex			27.4.1981	1436 - Walton on the Naze South Cliffs 16872 - Walton on the Naze South Cliffs	625154 625150	221225 221200
001	011	Handwritten notes, drawings and cross sections	Miscellaneous. Properties of debris flow, levels, stability analysis, competency, generation of excess, figures, remedial and control measures						
001	012	B/W photographs - envelope	Hadleigh Castle Essex, Building Research Establishment photos	x5		1964	1390 - Hadleigh Castle SE	581066	186044
001	013	B/W photographs - envelope	Southend slip Essex, Building Research Establishment photos	x10		23.12.1963	10669 - The Cliffs Grouping on Geindex	588300	185150

PROFESSOR J.N. HUTCHINSON DATA COLLECTION – UK MISCELLANEOUS

KW2010452 NGRC Box Number	LUPD Reference Number	Item	Description	Quantity	Item Ref. (if given)	Date of publication (if given)	NLD landslide number and name	Grid ref Easting	Grid ref Northing
002	001	Journal	Landslides in the Magho district of Fermanagh, Northern Ireland. D.B. Prior and J. Graham. Engineering Geology	x1	Volume 8, pp. 341-359	27.6.1974			
002	002	Paper/Journal	The analysis of the failure of an earth dam during construction. L.F. Cooling and H.Q. Golder	x1	Session 1942-1943	1.11.1942			
002	003	Paper	Landslides near Larne, Co. Antrim. 15-16 August 1970. D.B. Prior and G.R. Douglas. Irish Geography. Landslides 15-18.8.1970	x1	Vol. VI. No. 3 (1971)	16-16.8.1970			
002	004	Paper	Lias Clay: The long-term stability of cutting slopes. R.J. Chandler. Geotechnique	x1		1.3.1974			
002	005		deleted						
002	006	Proceedings	An investigation into the origin and engineering geology of periglacial slope deposits in Wenlock Shale, Ironbridge, UK using interactive digital terrain modelling. T.P. Gostelow. Sixth International Congress International Association of Engineering Geology. BGS	x1		6-10.8.1990			
002	007	Conf. Proceedings	Likely constraints on the stability of excavated slopes due to underground coal workings. G. Walton and R.K. Taylor. Rock Engineering. Central England	x1	pp. 329-349	4-7.4.1977			

PROFESSOR J.N. HUTCHINSON DATA COLLECTION – UK MISCELLANEOUS

KW2010452 NGRC Box Number	LUPD Reference Number	Item	Description	Quantity	Item Ref. (if given)	Date of publication (if given)	NLD landslide number and name	Grid ref Easting	Grid ref Northing
002	008	Proceedings	Some footwall failure modes in South Wales opencast workings. G. Walton and H. Coates. Ground Movements and Structures	x1	pp.435-451	1.4.1980			
002	009	Correspondence	Bedding-plane slip, residual strength and the Vaiont landslide. A.W. Skempton, ICE. Geotechnique	x1		1.3.1966			
002	010	Conf. Proceedings	The rate of softening in stiff fissured clays, with special reference to London Clay. A.W. Skepton. Imperial College London. (<i>Watford By-Pass, Walthamstow, Kensal Green, Mill Lane, Park Village East Wembley Hill</i>)	x1	vol. II	1948	?		
002	011	Conf. Proceedings	Strength along structural discontinuities in stiff clays. London clays. A.W. Skempton. Oslo Conference (<i>Guildford, Sevenoaks, Dedham, Sudbury Hill</i>)			20.9.1967			
002	012	Journal	Account of the land-slip in Ashley Cutting, on the line of the Great Western Railway. Ashley Cutting, Bath. J.G. Thomson. In. Proc. ICE. Landslide 2.11.1841	x1	Vol. 3, pp.129-173	1844	?		
002	013	Paper	Short-term slipping of a shallow excavation in gault clay. Gough Way, Cambridge. R.H.G. Parry. Ground Engineering Group. Proc. Instn. Civil Engineers	x1	Paper 9276. Part 1, 1988, 84, April pp. 337-353	1988	?		

PROFESSOR J.N. HUTCHINSON DATA COLLECTION – UK MISCELLANEOUS

KW2010452 NGRC Box Number	LUPD Reference Number	Item	Description	Quantity	Item Ref. (if given)	Date of publication (if given)	NLD landslide number and name	Grid ref Easting	Grid ref Northing
002	014	Conf. Proceedings	Slope stability of cuttings in Brown London Clay, A.W. Skempton. Conference on soil mechanics and foundations engineering, Tokyo. (New Cross, Wembley Hill, Kensal Green, Sudbury Hill)	x1		1977			
002	015		deleted						
002	016	Paper	Engineering geological case study of the site investigation and engineering design of a major trunk road cutting in carboniferous rocks. Unstone and Dronfield, Derbyshire. D.S. Buist. A.D. Burnett, M.K. Sanders	x1		16.10.1975			
002	017	Article	Cambridge North By Pass, A45. New Civil Engineer	x1		18.11.1976			
002	018		deleted						
002	019	Conf. Proceedings	The stability of slopes acted upon by parallel seepage. R. Haefeli. 2nd ICSMRE	x1	1:57-62	1948			
002	020		deleted						
002	021	Journal	Long-term stability of clay slopes. A.W. Skempton. The Rankine Lecture. Institute of Civil Engineers. Geotechnique. (Northolt) Landslide Jackfield, Shropshire, 1952	x1	Vol. 14. No.2	1964	4335 - Jackfield	368719	302632

PROFESSOR J.N. HUTCHINSON DATA COLLECTION – UK MISCELLANEOUS

KW2010452 NGRC Box Number	LUPD Reference Number	Item	Description	Quantity	Item Ref. (if given)	Date of publication (if given)	NLD landslide number and name	Grid ref Easting	Grid ref Northing
002	022	Conf. Proceedings	Soil mechanics and foundation engineering. Proceedings of the fourth international conference. Investigations of Two long-term failures in London Clay Slopes at Wood Green and Northolt. D.J. Henkel, Imperial College	x1		1.8.1957			
002	023	Conf. Proceedings	Slope monitoring and early warning systems: Application to coastal landslides on the south and east coast of England, UK. A.R. Clark, R. Moore & J.S. Palmer, Rendel Geotechnics. (<i>Holbeck Hill, Scarborough; Overstrand, nr. Cromer; Blackgang Chine, Ventnor; Kimmeridge Clay, Dorset</i>)	x1		17- 21.6.1996	Grouping on GeoIndex		
002	024	Article	Subsidence stopped by pattern of drains. Wimpey Laboratories. <i>A443 at Lindridge, Worcester</i>	x1		17.11.77			
002	025	Research article	Stabilization of landslips by installation of bored filter drains. Wimpey Central Laboratory. (A660, Otley Yorkshire)	x1		1967			
002	026	Research report	Air-photograph interpretation of road engineers in Britain. M.J. Dumbleton and G. West	x1	RRL Report LR 369	1970			
002	027	Report	Some geotechnical considerations in the planning of surface coal mines. G. Walton, T. Atkinson. Institution of Mining and Metallurgy	x1	Volume 87. MM	1978			

PROFESSOR J.N. HUTCHINSON DATA COLLECTION – UK MISCELLANEOUS

KW2010452 NGRC Box Number	LUPD Reference Number	Item	Description	Quantity	Item Ref. (if given)	Date of publication (if given)	NLD landslide number and name	Grid ref Easting	Grid ref Northing
002	028	Report	Development of the Severn Valley in the neighbourhood of Ironbridge and Bridgnorth. L.J Wills and E.L. Dixon QJGS	x1	QJGS Vol. 80 pp. 274-314	1924			
002	029	Journal	Stability of natural slopes in London Clay. A.W. Skempton, F.A. Delory. Proc. 4th Int. Conf.	x1	2: pp. 378-81	1957			
002	030		deleted						
002	031		deleted						
002	032	Research paper	Investigation of bank stability along the Caledonian Canal. Wimpey Central Laboratory	x1	No. 29	1966			
002	033	Conf. Proceedings	The rate of softening in stiff fissured clays, with special reference to London Clay. A.W. Skempton. Imperial College. (<i>Watford Bypass</i>), <i>Kensal Green</i> , <i>Walthamstow</i> , <i>Mill Lane</i> , <i>Park Village East</i> , <i>Wembley Hill</i>)	x1	IV c6	1948			
002	034	Conf. Proceedings	Slips in fissured clay. F.L. Cassel	x1	IV c5. Vol. II. 2nd Conf.	1948			
002	035	Conference paper	Carsington tops bill at ICE . New Civil Engineer	x1		14.3.1985			
002	036	Proceedings	Soil mechanics in relation to geology. A.W. Skempton. Yorkshire Geological Society	x1	Vol. 29, part 1, no.3, pp.33-62	27.4.1953			

PROFESSOR J.N. HUTCHINSON DATA COLLECTION – UK MISCELLANEOUS

KW2010452 NGRC Box Number	LUPD Reference Number	Item	Description	Quantity	Item Ref. (if given)	Date of publication (if given)	NLD landslide number and name	Grid ref Easting	Grid ref Northing
002	037	Journal	Investigations of the landslide at Walton's Wood, Staffs. K.B. Early and A.W. Skempton	x1	Vol. 5, 1972, pp.19-41	1972	Grouping on Geoindex		
002	038	Report	Short term slips - Deephams. T.R.M. Wakeling. Excavation in London Clay, located River Lea at Edmonton, Middlesex	x1		1970			
002	039	Proceedings	Failure of foundations and slopes on layered deposits in relation to site investigation practice. P.W. Rowe. Institute of Civil Engineers	x1	Paper 7057 S	1968			
002	040	Conf. Proceedings	The Ironbridge landslide - A case history of instabilities in carboniferous sediments. B. Denness. Rock Engineering, Newcastle University, 4-7 April 1977. British Geotechnical Society	x1	pp. 407-421	4-7.4.1977			
002	041	Record	A memoir of Colonel Sir Proby Cautley, Engineer and Palaeontologist. J. Brown. RS of London. (Ganges Canal)	x1	Vol. 34	2.3.1980			
002	042	Conf. Proceedings	Negative Skin Friction. B. Broms. Royal Institute of Technology, Stockholm, Sweden	x1		1.1.1979			
002	044	Report	Field measurement of pore pressure in high plasticity soils. E.W. Brooker & D.A. Lindberg, University of Alberta	x1		30.8-3.9.1965			

PROFESSOR J.N. HUTCHINSON DATA COLLECTION – UK MISCELLANEOUS

KW2010452 NGRC Box Number	LUPD Reference Number	Item	Description	Quantity	Item Ref. (if given)	Date of publication (if given)	NLD landslide number and name	Grid ref Easting	Grid ref Northing
002	045	Report	<i>In German.</i> Viskositätseigenschaften von Zementsuspensionen und-morteln sowie Betonen und dazu verwendete Meßgeräte. Gunter Brux	x1	pp. 239-245	1.10.1963			
002	046	Journal	Transducer Piezometer. Brooker et.al. University of Alberta	x1		3.4.1970			
002	047	Journal	Transvaal Karst: Some considerations of development and morphology, with special reference to sinkholes and subsidences on the far west rand. A.B.A. Brink and T.C. Partridge South African Geographical Journal	x1	Vol. XLVII	1.12.1965			
002	048	Journal	Cutans: Their definition, recognition and interpretation. R. Brewer. Journal of Soil Science	x1	Vol. 11, No.2,1960: 280-292	1960			
002	049	Paper	On the problem of measuring the permeability of the permo-trassic sandstones of parts of North West England. C.J. Bow, G.W. Hodkinson, F.T. Howell, C.J. Payne, P.J. Thompson	x1		(no date) circa 1970			
002	050	Paper	A new interpretation of the Pleistocene succession in the Bristol Channel area (abstract): D.Q. Bowen. Extract proceedings of the Ussher Society	x1	Volume Two, Part Two. p.86	1969			
002	051	Research report	Absorption and friction behaviour of minerals in vacuum. L.G. Bromwell. Phase Report. No. 2. Department of Civil Engineering, Massachusetts, USA	x1	Research report R64-42	1.3.1965			

PROFESSOR J.N. HUTCHINSON DATA COLLECTION – UK MISCELLANEOUS

KW2010452 NGRC Box Number	LUPD Reference Number	Item	Description	Quantity	Item Ref. (if given)	Date of publication (if given)	NLD landslide number and name	Grid ref Easting	Grid ref Northing
002	052	Conf. Proceeding	A comparison of laboratory and field values of cv for Boston Blue Clay. L.G. Bromwell, T.W. Lambe, 47th Annual Meeting of the Highway Research Board, Washington, D.C. January 1968	x1	Professional paper P68-3, No. 205	1968			
002	053	Conf. Proceedings	A theory of the mechanical behaviour of sand. E.H. Brown. 11th international congress of applied mechanics, Munich, Germany 1964	x1		1964			
002	054	Symposium paper	Laboratory shear testing of soils. The Vienna method of shear testing. H. Borowicka. Laboratory Shear Testing of Soils, Ottawa, 9-11 September 1963	x1		9.9.1963			
002	055	Report	<i>In German.</i> Mitteilungen. H. Borowicka, C. Abwesser, H. Borowicka.	x2		1.7.1961 & 1.6.1962			
002	056	Report	Shear stability of dumps and dams of gold mining waste. G.E. Blight. The Civil Engineer in South Africa	x1	Volume 11, Number 3.	1.3.1969			
002	057	Report	Observations on the shear testing of indurated fissured clays. G.E. Blight. Proceedings of the Geotechnical Conference. Oslo	x1	Vol. 1	1967			
002	058	Proceedings	The analysis of annual extreme sea levels at certain ports in southern England. D.L. Blackman and J. Graff. Proc. Instn. Civ. Engrs. (<i>Newlyn, Southampton, Portsmouth, Bembridge, Newhaven, Pevensey, Rye, Dover, Sheerness, Southend</i>)	x1	Part 2, 1978, 65, June, pp. 229-357	15.8.1978			

PROFESSOR J.N. HUTCHINSON DATA COLLECTION – UK MISCELLANEOUS

KW2010452 NGRC Box Number	LUPD Reference Number	Item	Description	Quantity	Item Ref. (if given)	Date of publication (if given)	NLD landslide number and name	Grid ref Easting	Grid ref Northing
002	059	Journal	Model experiments on sliding friction for application hydraulic conveying of solids. B.J. Briscoe, H. Radwan and M. Streat. The Canadian Journal of Chemical Engineering	x1	Volume 61, No. 6, pp. 769-775	1983			
002	060	Journal	An analytical solution to the problem of seepage into counter fort drains. E.N. Bromhead. Canadian Geotechnical Journal	x1	Volume 21, No.4, pp. 657-662	1984			
002	061	Proceedings	Subsidence from lowering of the ground water level. B. Broms. Eng. Foundations Conference on Evaluation and Prediction of subsidence.	x1		1978			
002	062	Journal	A note on field vane testing of silty soils. G.E. Blight. Canadian Geotechnical Journal	x1	Vol. V, No.3, pp. 142-9	3.8.1968			
002	063	Conf. Proceedings	Horizontal stresses in stiff and fissured lacustrine clays. G.E. Bright. Soil Mechanics and Foundation Engineering, South Africa.	x1		1.12.1967			
002	064	Conf. Proceedings	Predicted and measured strengths in soils. G.E. Blight. 4th Regional Conference for Africa on Soil Mechanics and Foundation Engineering	x1		1.12.1967			
002	065	Design Handbook	Stabilization of soil with lime columns. B. Broms and P. Boman. Royal Institute of Technology, Sweden	x1		1.6.1977			

PROFESSOR J.N. HUTCHINSON DATA COLLECTION – UK MISCELLANEOUS

KW2010452 NGRC Box Number	LUPD Reference Number	Item	Description	Quantity	Item Ref. (if given)	Date of publication (if given)	NLD landslide number and name	Grid ref Easting	Grid ref Northing
002	066	Philosophical transactions	A discussion on problems associated with the subsidence of south-eastern England. Royal Society of London	x1	Volume 272, no. 1221	not known. Circa 1970			
002	067	Proceedings	The coombes and embayments of the chalk escarpment. C.C. Fagg. The Croydon Natural History and Scientific Society Ltd	x1		1.1.1954			
002	068	Proceedings	The Ground upon which Croydon was built. A reappraisal of the Pleistocene history of the River Wandle and its basin. D.S. Peake, Croydon Natural History and Scientific Society Ltd	x1	Vol. 17. part 4. ISSN 0309-8656	1.6.1982			
002	069	Booklet	Books on the Fenland. Hereward's Isle. W.E. Dring. Isle of Ely	x1		1962			
002	070	Booklet	The floating church of Holme and Manea. J. Bennett. The Fenland Ark	x1		1983			
002	071	Booklet	A description of the Shippea Man. T. McKenny Hughes. Notes on the Fenland. A. Macalister	x1		1916			
002	072	Booklet	Wicken Sedge Fen. F.J. Bingley and S.M. Walters. National Trust	x1		1973			
002	073	Report	Study of Mudflows. J. Moody, Geography 215. (<i>Reference to London Clay</i>)	x1		not known. Circa. 1970			

PROFESSOR J.N. HUTCHINSON DATA COLLECTION – UK MISCELLANEOUS

KW2010452 NGRC Box Number	LUPD Reference Number	Item	Description	Quantity	Item Ref. (if given)	Date of publication (if given)	NLD landslide number and name	Grid ref Easting	Grid ref Northing
002	074	Design guide	Sea defence and coast protection works. R.B. Thorn & A.G. Roberts. (<i>Herne Bay</i>)	x1	pp. 190-197	1981	Grouping on GeoIndex		
002	075	Proceedings	Landslips near Lyme Regis. M.A. Arber. Geologists Association	x1	Vol. 84, part 2, 1973, pp. 121-133	2.3.1973	Grouping on GeoIndex		
002	076	Journal	Investigation of a coastal landslip at Charmouth, Dorset. B. Denness, D.M. McCann and P. Grainger. Quarterly Journal of Engineering Geology. London	x1	Vol. 8, pp. 119-140, 11 figs.	1975	846 - Higher Sea Lane Cliff	336093	93209
002	077	Journal	The contribution made to cliff instability by Head deposits in the West Dorset coastal area. B.W. Conway. Quarterly Journal of Engineering Geology	x1	Vol. 12, pp. 267-275	1979			
002	078	Proceedings	The geology of the Charmouth cliffs, beach and fore-shore. W.D. Lang. Geol. Ass.	x1	Vol. XXV, Part 5.	1914	Grouping on GeoIndex		
002	079	Proceedings	The valley system of Lyme Regis. M.A. Arber. Geol. Ass.	x1	Vol. LVII, Part 1, pp. 8-15	1946	Grouping on GeoIndex		
002	080	Map	Coastal terraine evaluation and slope stability of the Charmouth/Lyme Regis area of Dorset. Sheet 1	x1		1.4.1977			

PROFESSOR J.N. HUTCHINSON DATA COLLECTION – UK MISCELLANEOUS

KW2010452 NGRC Box Number	LUPD Reference Number	Item	Description	Quantity	Item Ref. (if given)	Date of publication (if given)	NLD landslide number and name	Grid ref Easting	Grid ref Northing
002	081	Proceedings	An historical survey of the landslips of the Exmouth-Lyme Regis Undercliffs, Devon. J. Pitts. Liverpool Polytechnic. Dorset Natural History and Arch. Society	x1	Vol. 103	1981			
002	082		deleted						
002	083	Abstract	Rapid design assessments from slope stability calculation results. E.N. Bromhead, A.J. Harris. Kingston upon Thames.	x1		17.3.1989			
002	084	Journal	Investigation of embankment failure in soft clay. E.W. Brand, P. Krasaasin. Geotechnical Engineering. Asian Institute of Technology, Bangkok	x1	Vol. 2	1971			
002	085	Technical notes	The field residual strength of London Clay and its correlation with laboratory measurements, especially ring shear tests. E.N. Bromhead and N. Dixon	x1		1987			
002	086	Report	The instrumented trial slope at Empingham Dam. R.C. Bridle, P.R. Vaughan and M.L.G. Wernek	x1		1.3.1989			
002	087	Proceedings	Stress-strain-strength characteristics of macroporous loess in Belgrade. 11th international conference on soil mechanics and foundation engineering. San Francisco	x1		12- 16.8.1985			

PROFESSOR J.N. HUTCHINSON DATA COLLECTION – UK MISCELLANEOUS

KW2010452 NGRC Box Number	LUPD Reference Number	Item	Description	Quantity	Item Ref. (if given)	Date of publication (if given)	NLD landslide number and name	Grid ref Easting	Grid ref Northing
002	088	Paper	Groundwater Control in Opencast mining. S.C. Brealey	x1	paper 18. pp. 390-415	not known			
002	089	Journal	Strain energy and behaviour of overconsolidated soils. E.W. Brooker. Canadian Geotechnical Journal	x1	Vol. IV, no.3	1.9.1967			
002	090	Report	Recent advances in the application of rock mechanics in mining excavation design. E.T. Brown. IMM, People's Republic of China	x1	Ferons Metals. Vol, 32, no.2, 1980, pp. 18-14 and no. 3, pp. 28-30	1.10.1979			
002	091	Proposal - level arch file	Research contract on cambering and valley bulging. J.N. Hutchinson. Imperial College	x1		1.11.1988			
002	092	Table and sample	Particle Size Distribution - Godalming and River Taff	x1		22.04.1980			
002	093	Journal	The evolution of the East Anglian River Stour. P.G.H. Boswell. Journal of the Ipswich and District Natural History Society	x1	Vol. 1., part I (1925) pp. 7-36	4.11.1916			
002	094	Journal	The age of the Suffolk Valleys, etc. P.G.H. Boswell. Quarterly Journal Geological Society	x1	Vol. 1xix	1.12.1913			
002	095	Reference Book	The English Coastal Counties. Notes on Field Trips and in slides referred to in the literature. J.N. Hutchinson	x1		not known			

PROFESSOR J.N. HUTCHINSON DATA COLLECTION – UK MISCELLANEOUS

KW2010452 NGRC Box Number	LUPD Reference Number	Item	Description	Quantity	Item Ref. (if given)	Date of publication (if given)	NLD landslide number and name	Grid ref Easting	Grid ref Northing
002	096	Reference Book	Coast Reconnaissance by air photographs. J.N. Hutchinson	x1		not known			
002	097	Press article	Brinkmanship where coast dwindles. Erosion threat to Spurn Head. The Times.	x1		8.8.1962			

PROFESSOR J.N. HUTCHINSON DATA COLLECTION - WALES

KW2010452 NGRC Box Number	LUPD Reference Number	Item	Description	Quantity	Item Ref. (if given)	Date of publication (if given)	NLD landslide number and name	Grid ref Easting	Grid ref Northing
001	Box file 001.01	Journal	Characteristics of cohesionless soils affecting the stability of slopes and earth fills. A. Casagrande. Journal of the Boston Society of Civil Engineers	x1	pp. 257-276	13.11.1935			
001	Box file 001.02	Journal with b/w photos	The stability of tips and spoil heaps. A.W. Bishop. The Quarterly Journal of Engineering Geology. Aberfan 1966	x1	Vol. 6, nos. 3 & 4	1973	3176 - Aberfan colliery waste slide	306334	200819
001	Box file 001.03	Report	Flowslides in coarse coal waste with a case study at Bedwellty, S. Wales. M.S. Hendy. Imperial College of Science and Technology, Department of Civil Engineering, Soil Mechanics	x1		1985			
001	Box file 001.04	Report	Liquefaction and slow slides. W. Heung and S. Mok King-sang	x1		1983-1984			
001	Box file 001.05	Photographs	Colour and black and white photographs showing density measurements at trial pits. J.N. Hutchinson photographs	10 colour, 39 b/w		unknown			
001	Box file 001.06	Press cutting	Coal tip rumours. Western Mail Aberfan 1966	x1		7.1.1993	3176 - Aberfan colliery waste slide	306334	200819
001	Box file 001.07	Letter	Flow slides from waste tips. English China Clays Aberfan inquiry 1966	x1		9.10.1999	3176 - Aberfan colliery waste slide	306334	200819

PROFESSOR J.N. HUTCHINSON DATA COLLECTION - WALES

KW2010452 NGRC Box Number	LUPD Reference Number	Item	Description	Quantity	Item Ref. (if given)	Date of publication (if given)	NLD landslide number and name	Grid ref Easting	Grid ref Northing
001	Box file 001.08	Journal	The stability of colliery spoilbanks. G.L. Watkins. Colliery Engineering.	x1	Vol. 43. 1966	1959	3176 - Aberfan colliery waste slide	306334	200819
001	Box file 001.09	Journal	Investigation of flow failures of tailings dams. J.K. Jeyapalan, J.M. Ducan and H. Bolton Seed. Journal of Geotechnical Engineering. (shows photo of Aberfan landslip 1966)	x1	Vol. 109, No.2 Proc. No. 17715	1.2.1983	3176 - Aberfan colliery waste slide	306334	200819
001	Box file 001.10	Folder - photographs	Surface level diagrams of disturbed ground, ground stability movement. Aerial b/w photograph of view of toe of slip showing village and two schools. B/W Photograph showing disturbed ground. Aberfan 1966	x1 - photos x 17		Spring 1966	3176 - Aberfan colliery waste slide	306334	200819
001	Box file 001.11	Handwritten notes, cross sections and diagrams	Diagrams showing flow slides of tips. Consolidation characteristics of spoil. Consolidation models for run-out Landslide at Aberfan 1966			9.11.1973	3176 - Aberfan colliery waste slide	306334	200819
001	Box file 002.01	Report	An integrated report on slope failure mechanisms at Goonyella. L.P. Gonano. Commonwealth Scientific and Industrial Research Organisation, Australia	x1	Technical Report No. 14	1.11.1976			
001	Box file 002.02	Report	Landslide Recognition. Identification, Movement and Courses. European Commission Environment Programme	x1	Report No. 1	1976			
001	Box file 002.03	Test sheets	Coal compaction test Worksheet data. Cardiff University	x1		9.9.1999			

PROFESSOR J.N. HUTCHINSON DATA COLLECTION - WALES

KW2010452 NGRC Box Number	LUPD Reference Number	Item	Description	Quantity	Item Ref. (if given)	Date of publication (if given)	NLD landslide number and name	Grid ref Easting	Grid ref Northing
001	Box file 002.04	Letters	Mines. 12 dangerous occurrences classified. HSE	x1		15.2.1993			
001	Box file 002.05	Proceedings	The stability of waste tips. J.K.T.L Nash. 4th Asian Reg. Conf. Bangkok	x1		1971			
001	Box file 002.06	Proceedings	Slopes in mining and industrial waste. G. Blight. Tokyo Conference	x1		1977			
001	Box file 002.07	Journal	Geotechnical aspects of coal waste embankments. I. Holubec. Geocon., 1975	x1		19.11.1975			
001	Box file 002.08	Journal	Stability in coal mining. Performance of a waste rock dump on moderate to steeply sloping foundations. D.B. Campbell & W.H. Shaw. Preparation plant refuse and waste disposal	x1	pp. 395-405	1978			
001	Box file 002.09	Technical paper	Flowslides - susceptibility and consequence. J.D. Eckersley. Queensland Division Technical Papers	x1		1987			
001	Box file 002.10	Journal	Analyses of flow failures of mine tailings dams. J.K. Jeyapalan, J.M. Duncan and H. Bolton Seed. Journal of Geotechnical Engineering	x1	Vol. 109, No. 2, Proc. No. 17714	1.2.1983			

PROFESSOR J.N. HUTCHINSON DATA COLLECTION - WALES

KW2010452 NGRC Box Number	LUPD Reference Number	Item	Description	Quantity	Item Ref. (if given)	Date of publication (if given)	NLD landslide number and name	Grid ref Easting	Grid ref Northing
001	Box file 002.11	Research paper	An investigation into spoil stability at Moura. C.J. O'Regan, M. Dunbavan and C.W. Mallett. The Aus. I.M.M. Central Queensland Branch. Symposium on strip mining	x1	Paper No. 394	1981			
001	Box file 002.12	Press release	Some properties of South Wales Colliery Discards. J.A. Lawrence. Colliery Guardian	x1		1.6.1972			
001	Box file 002.13	Article	<i>In German.</i> Das Ausflieben der Richswasserstraßenverwaltung	x1		1933			
001	Box file 002.14	Proceedings	Liquefaction response of coal - mine tailings to earthquakes. R.K. Taylor, G.R. Morrell, G.L. MacMillian. Int. Ass. Engin. Geol. Madrid			4-8.9.1978			
001	Box file 002.15	Paper	Physical modelling of sequential slope failure. M. Dunbavan. Geomechanics. New Zealand	x1	Vol.2, pp. 2-41 and 2-45 Paper no. 373	1.5.1980			
001	Box file 002.16	Journal	Geologic factors in waste bank stability. W.E. Davies. Mining Congress Journal	x1	Vol. 59 No.1	1973			
001	Box file 002.17	Journal	Spoil pile instability with reference to the Goonyella Mine, Queensland. M. Dunbavan. The Aus. I.M.M. Central Queensland Branch. Symposium on strip mining	x1	RP341	18.6.1981			

PROFESSOR J.N. HUTCHINSON DATA COLLECTION - WALES

KW2010452 NGRC Box Number	LUPD Reference Number	Item	Description	Quantity	Item Ref. (if given)	Date of publication (if given)	NLD landslide number and name	Grid ref Easting	Grid ref Northing
001	Box file 002.18	Journal	Coal waste bank stability. W.E. Davies. Mining Congress Journal	x1	Vol. 54.No.7.	1968			
001	Box file 002.19	File. Handwritten notes. B/W photographs. Graphs	Flow slides from natural slopes and waste tips. National symposium on landslides – Spain			21.10.1992			
001	Box file 002.20	Results	Insitu densities. Trail pit testing summary, Trail pit logs. Cardiff University						
001	Box file 002.21	Handwritten notes	Selection of handwritten notes. Density, test pits						
001	Box file 002.22	Letter	Fly ash in a valley near Brynllwarch. Dr H. Evans, Imperial College	x1		18.7.1995			
001	Box file 003.01	Abstract	Distribution of ramparted ground-ice depressions, Llanpumsaint, southwest Wales. N. Ross, C. Harris, P. Brabham and S. Campbell. 8th international conference on permafrost extended abstracts on current research and newly available information	x1		1994			
001	Box file 003.02	Proceedings	Landslides in South Wales Valleys. Prof. G. Knox. Proceedings of the South Wales Institute of Engineers	x1	pp. 260-264. Vol. XLIII	1927			

PROFESSOR J.N. HUTCHINSON DATA COLLECTION - WALES

KW2010452 NGRC Box Number	LUPD Reference Number	Item	Description	Quantity	Item Ref. (if given)	Date of publication (if given)	NLD landslide number and name	Grid ref Easting	Grid ref Northing
001	Box file 003.03	Proceedings	Special general meeting, Cardiff. Proceedings of the South Wales Institute of Engineers.	x1	pp. 257247. Vol. XLIII	1927			
001	Box file 003.04	Paper	The Heads of the Valleys Road. A.S. Coombs, L.W. Hinch.	x1	Paper 7237	9.12.1969			
001	Box file 003.05	Journal	Possible late Quaternary pingo remnants in central London. J.N. Hutchinson. Imperial College.	x2	Vol. 284, No. 5753, pp.253-255	20.3.1980			
001	Box file 003.06	Proceedings	Excavations and slopes. Description of a flow slide in loose sand, East Chicago, Indiana. R.B. Peck and W.V. Kaun. Proceedings 21C. Rotterdam	x1	pp.31-33	1948			
001	Box file 003.07	Field meeting	Joint Field Meeting, South Wales. The British Geotechnical Society. Geol. Soc. Eng. Group	x1		25- 27.4.1986			
001	Box file 003.08	Proceedings	The Welsh Landscape. T. Neville George. Science Progress	x1	Vol. XLIX, No. 194	1.4.1961			
001	Box file 003.09	Abstract/References	Slope stability seminar. Landslide classifications, the influence line approach to slide stabilisation and the importance of tectonically produced shears. J.N. Hutchinson. South Wales Association - Ground Engineering Group	x1		17.4.1996			

PROFESSOR J.N. HUTCHINSON DATA COLLECTION - WALES

KW2010452 NGRC Box Number	LUPD Reference Number	Item	Description	Quantity	Item Ref. (if given)	Date of publication (if given)	NLD landslide number and name	Grid ref Easting	Grid ref Northing
001	Box file 003.10	Flow slide summaries	Flow slide summaries in Wales. W.J. Searle. Deputy Inspector of Mines and Quarries. Dates of flow slides and mechanism	x1	Appendix 1 and 2	11.9.1972			
001	Box file 003.11	Memorandum	Aberfan. Note on liquefaction slides. Scott Wilson Kirkpatrick and partners	x1		2.12.1966	3176 - Aberfan colliery waste slide	306334	200819
001	Box file 003.12	Interim report	Landslide at Blaina. W. Brynmor Davies, M. Nachshen. Nantyglo and Blaina Urban District Council	x1		1.3.1954			
001	Box file 003.13	Report	Report on Borings. Nantyglo and Blaina Urban District Council. Blaina, Monmouthshire	x1	55/180	1.4.1954			
001	Box file 003.14	Correspondence	Distribution of ground-ice depressions. Pingos in Wales. Cledlyn valley. N. Ross and J.N. Hutchinson			2003-2004			
001	Box file 003.15	Press article	The Pentre Disaster. Rubbish tip overwhelms cottages. The Rhondda Leader. Landslide 11.2.1909	x1		13.2.1909			
001	Box file 003.16	B/W photo print	Effect of the rains at Bedwellty. South Wales Echo. Flow slide November 1926	x1		20.11.1926	?		
001	Box file 003.17	Report	A study of Pingo Scars at Bwlch-Derwin, North Wales. J.W. Moore. Birkbeck College	x1		1980			

PROFESSOR J.N. HUTCHINSON DATA COLLECTION - WALES

KW2010452 NGRC Box Number	LUPD Reference Number	Item	Description	Quantity	Item Ref. (if given)	Date of publication (if given)	NLD landslide number and name	Grid ref Easting	Grid ref Northing
001	Box file 003.17	Correspondence	Relict Ice Mounds, Bwlch-Derwin, North Wales			14.10.1997			
001	Box file 003.17	Report	A preliminary investigation of a number of geomorphological features and other characteristics of a site on the, Bwlch Derwyn, Lleyn Peninsula, North Wales. V. Rogers, Countryside Council	x1		1.2.1998			
001	Box file 003.18	Correspondence and colour vertical photos	Relating to Cwm Cilio and Bwlch Derwin. Llanpumsaint/Pontarsais N. Ross and J.N. Hutchinson. Relating to Llanpumsaint Pingo field Colour prints from Getmapping			20.10.2003			
001	Box file 003.18	Colour photos	Llanpumsaint/Pontarsais vertical photos	x3		24.6.2003			
001	Box file 003.19	Diagrams and handwritten notes	Colva pingo - Cardiff			13.7.1990			
001	Box file 003.20	Letter	Published references to the River Capture at Quakers Yard. Capture of the River Bargoed Taff. Welsh Water Authority			8.5.1979			
001	Box file 003.21	Letter	Failure of tailings dam. A.D. Penman			12.10.1984			

PROFESSOR J.N. HUTCHINSON DATA COLLECTION - WALES

KW2010452 NGRC Box Number	LUPD Reference Number	Item	Description	Quantity	Item Ref. (if given)	Date of publication (if given)	NLD landslide number and name	Grid ref Easting	Grid ref Northing
001	Box file 003.22	Report	Sliding and toppling failures in an open strip mine Highway. M. Dunbavan. Geomechanics of coal mining report	x1	Report No. 43	1983			
001	Box file 003.23	Report	Program Wederg - a slope stability wedge analysis. M. Dunbavan. Geomechanics of coal mining report	x1	Report No. 25				
001	Box file 003.24	Report	Spoil pile instability, South Blackwell Mine Queensland. M. Dunbavan and T.C. Welsh. Geomechanics of coal mining report	x1	Report No. 35	1982			
001	Box file 003.25	Field trip notes	Landslides in Rhondda, Field trip notes. Engineering Group of the Geological Society Annual Meeting, Cardiff	x1		1993	Grouping on GeolIndex		
001	Box file 003.26	Report	Llyn Brianne Dam. R.J. Lillicrap. Civil Engineering	x1		1.12.1969			
001	Box file 003.27	Report	The River Towy scheme for the West Glamorgan water board. R.J. Lillicrap. Water and Water Engineering	x1		1968			
001	Box file 003.28	Summary Report	Blaencwm Landslide, British Coal Corporation	x1		1.5.1995			
001	Box file 003.29	Report	The design and construction of the Taff Vale Trunk Road between Tongwynlais and Abercynon. K.E. Ainscow, J.D. Palmer, J.S. Mott, J.P.V. Crean	x1		1.3.1972			

PROFESSOR J.N. HUTCHINSON DATA COLLECTION - WALES

KW2010452 NGRC Box Number	LUPD Reference Number	Item	Description	Quantity	Item Ref. (if given)	Date of publication (if given)	NLD landslide number and name	Grid ref Easting	Grid ref Northing
001	004		deleted						
001	005	Journal	On the predication of the Reach and Velocity of Catastrophic Landslides. A.E. Scheidegger. Rock Mechanics	x1	Vol. 5, pp. 231-236 (1973)	10.07.1973			
001	006	B/W photograph	Ebbw Fach Valley (Bournville slip of Knox 1927), S. Wales. BKS Surveys. Landslip 1927			4.5.1971	2641 - Darren Ddu	319820	206060
001	007	Press article	Grave peril to the mining township of Cwm. South Wales Echo. Landslide 12.11.1926			13.11.1926	?		
001	007	Press article	Mountain on the move. Serious landslide at Cwm. River bed forced up. South Wales Echo. Landslide 12.11.1926			20.11.1926			
001	008	Conference paper	Industrial spoil tips. G.A. Jones, A.D.N. Penman, C.R.V. Tandy. Conference on civil engineering problem of the South Wales Valleys. ICE	x1	pp.61-71	1969			
001	009	Article	The landslide in the Rhydney valley, Wales. Nature	x1	Vol. LXXIII. No. 1896. Vol. 73	1.3.1906			
001	010	Article	Viaduct vaults Ebbw Valley Slips, Wales. NCE	x1		12.5.1983			
001	011	Press cutting	Colliery tip slide near Cilfynydd. Free Press and Rhondda Leader. 5.12.1939	x1		9.12.1939	3145 - Cilfynydd	308945	193639

PROFESSOR J.N. HUTCHINSON DATA COLLECTION - WALES

KW2010452 NGRC Box Number	LUPD Reference Number	Item	Description	Quantity	Item Ref. (if given)	Date of publication (if given)	NLD landslide number and name	Grid ref Easting	Grid ref Northing
001	012	Press cutting	Mine memorial saves school in slurry landslide. Independent	x1		3.12.1992			
001	013	Press cutting	Hourly checks on threatening slag tip. <i>Publication unknown</i>	x1		20.2.1990			

References

British Geological Survey holds most of the references listed below, and copies may be obtained via the library service subject to copyright legislation (contact libuser@bgs.ac.uk for details). The library catalogue is available at: <http://geolib.bgs.ac.uk>.

HUTCHINSON, J.N., 2008. *Selected Papers on Engineering Geology and Geotechnics*. AIGA Associazione Italiana di Geologia Applicata e Ambientale. ISBN 9 788890328206

American Geophysical Union, Landslide Blogosphere, 4 January 2012