

Figure 1 Map showing the location of samples considered in this survey. Lincolnshire Limestone data are from Bishop and Lloyd (1990).

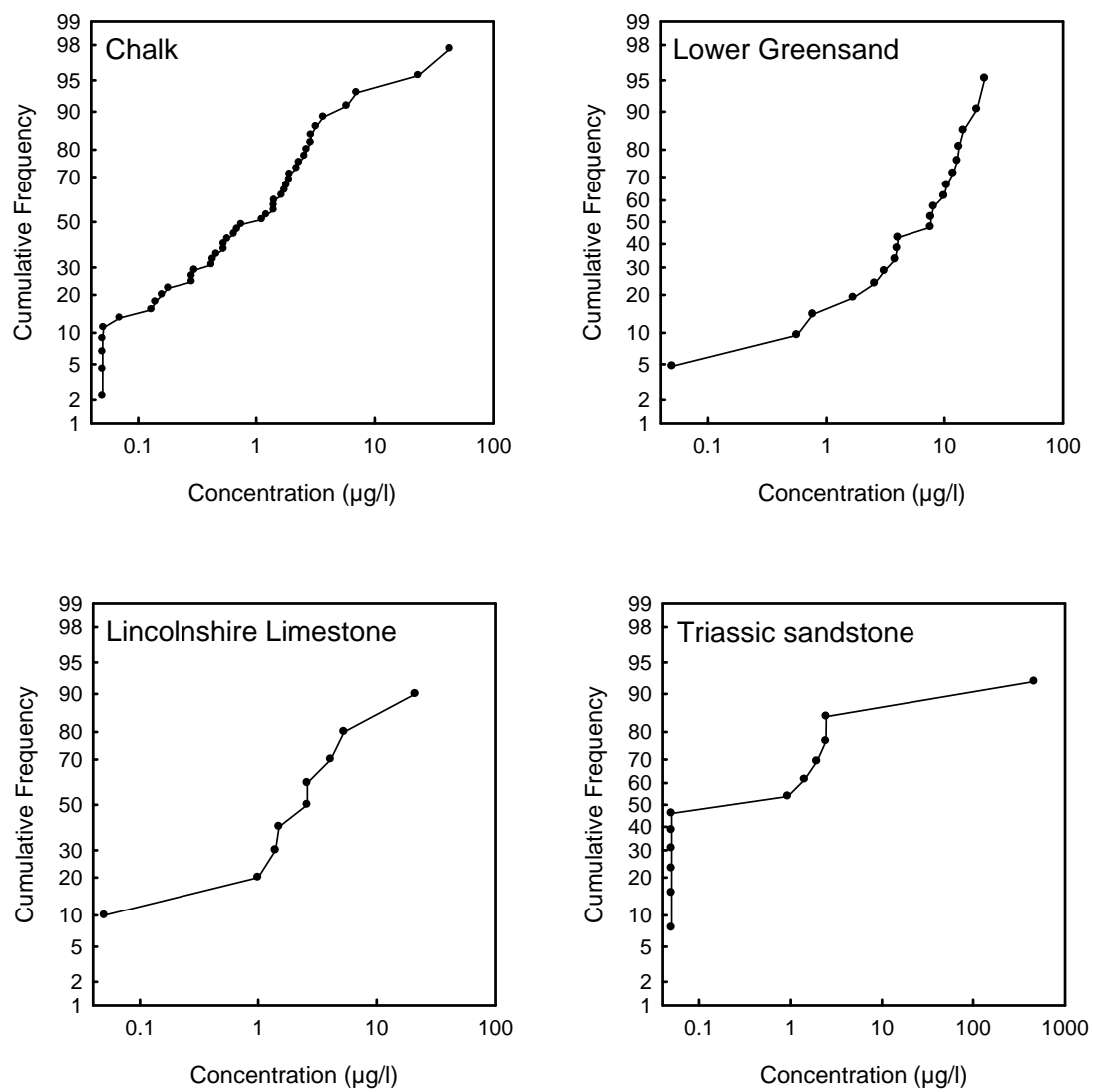


Figure 2 Cumulative probability plots for methane concentration data from major aquifers

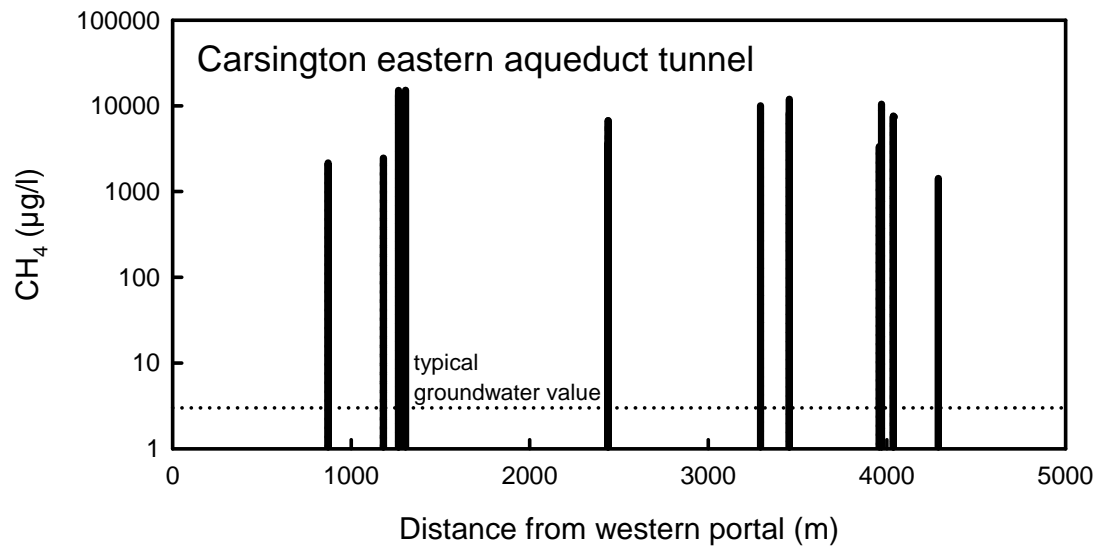
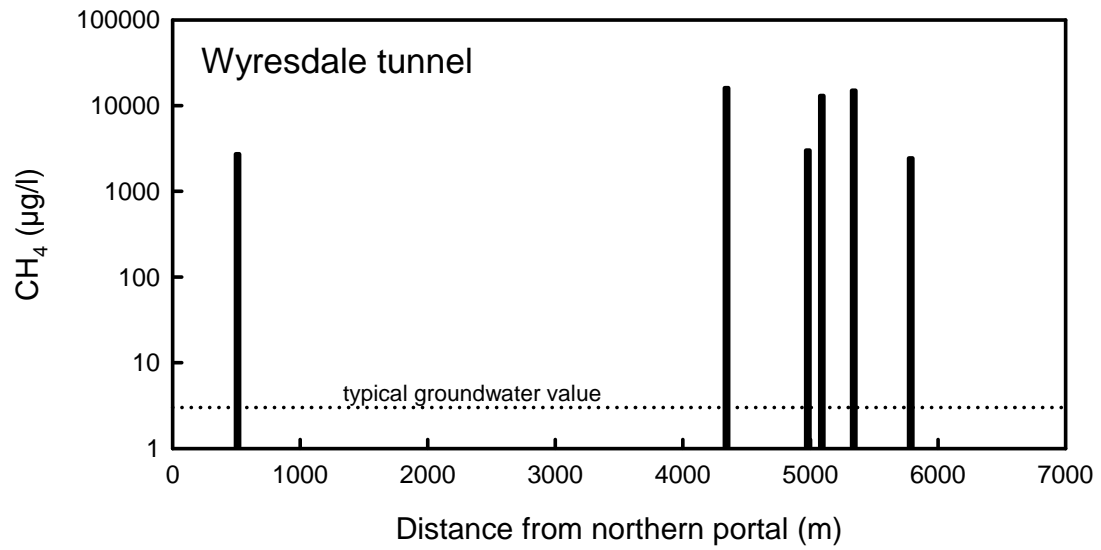


Figure 3 Dissolved methane concentrations of inflows to transfer tunnels bored in Namurian (upper Carboniferous) strata at Carsington (Derbyshire) and Wyresdale (Lancashire). Note Log scale. Data from Pearson and Edwards (1991) and Bath *et al.* (1988).