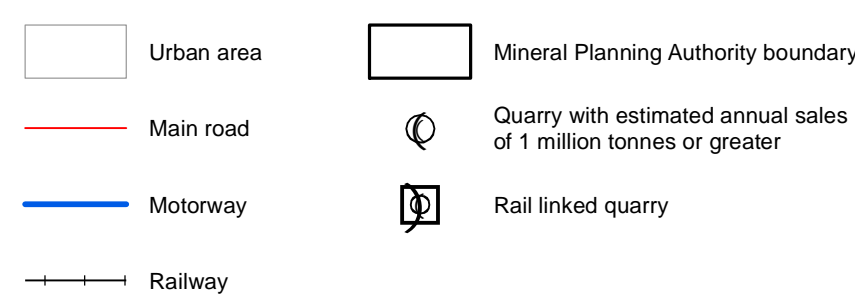
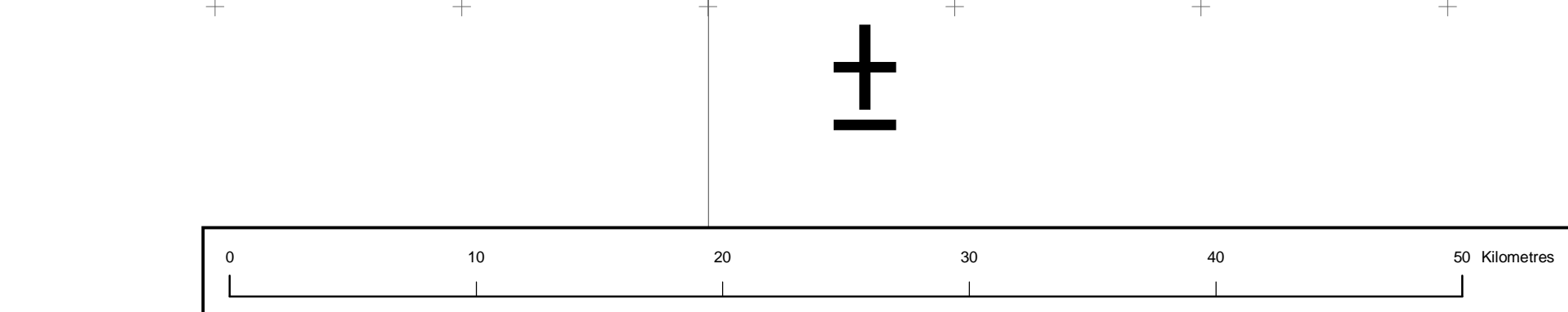
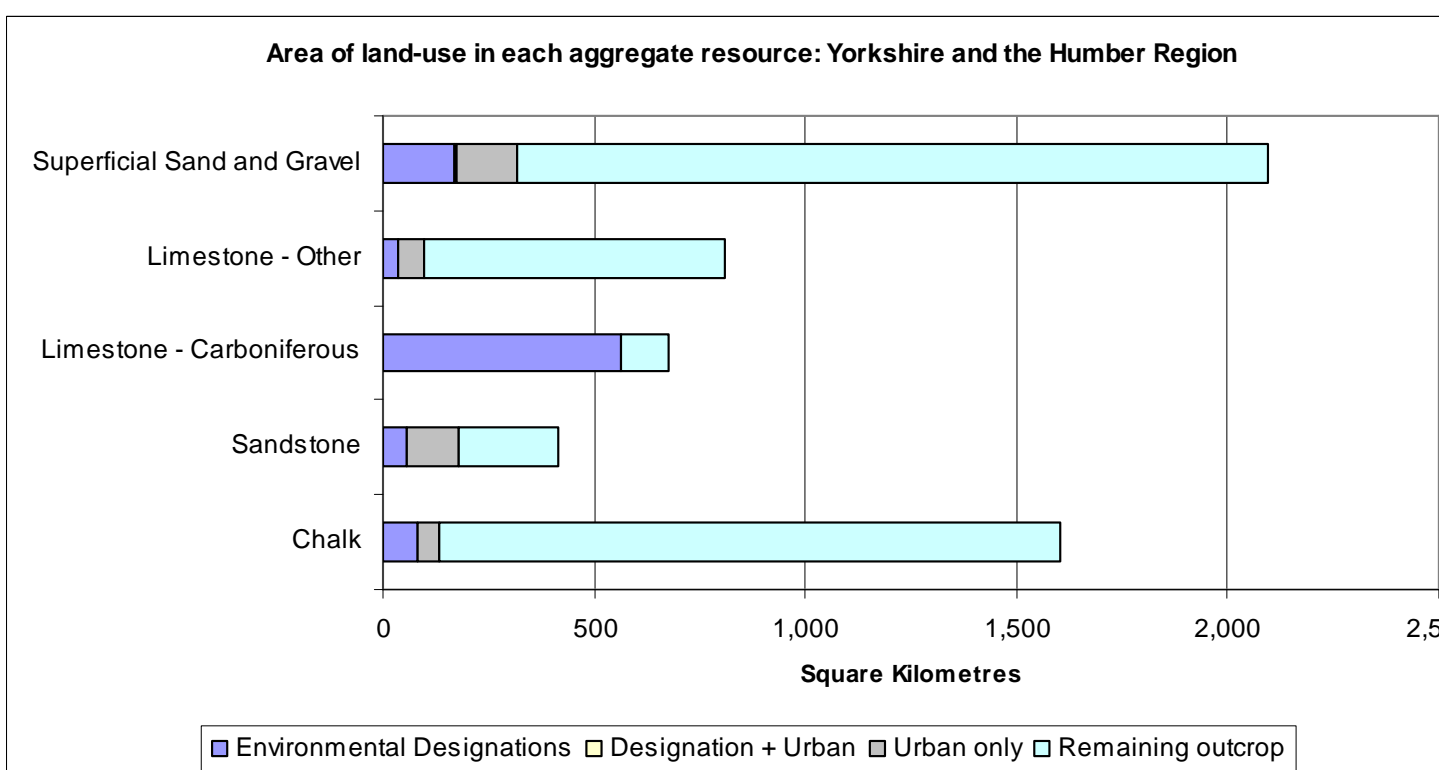
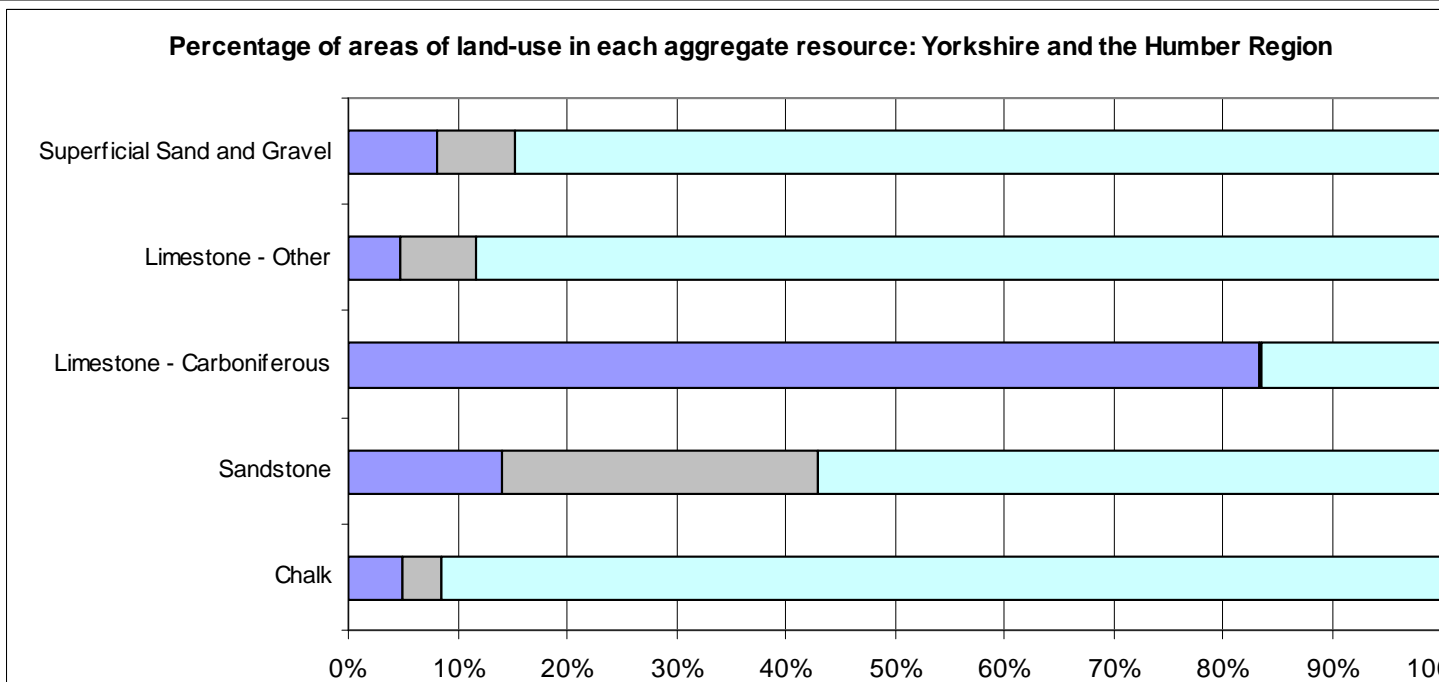


Abbreviation descriptions:

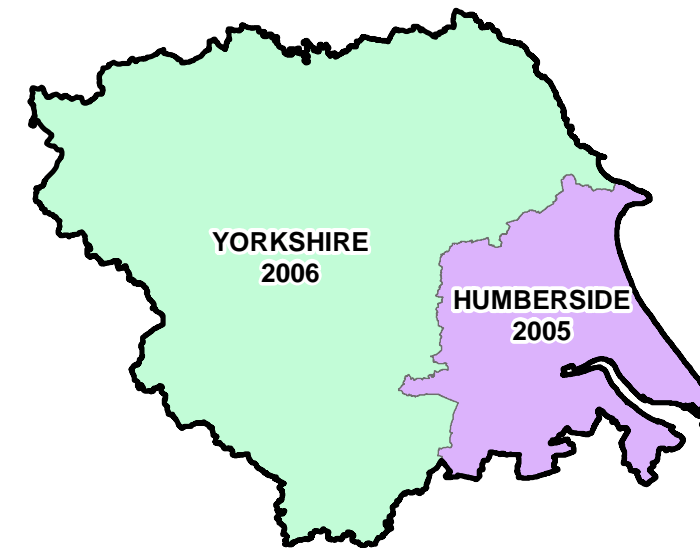
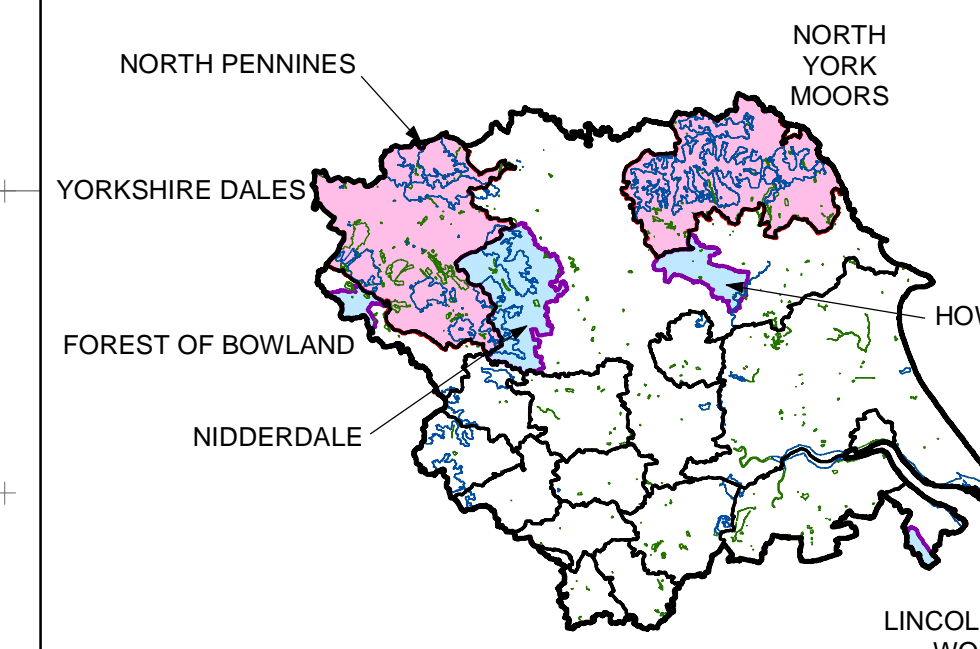
Ch	Chalk
CR	Crushed Rock
Lst	Limestone/Dolomite
MSG	Marine Sand and Gravel



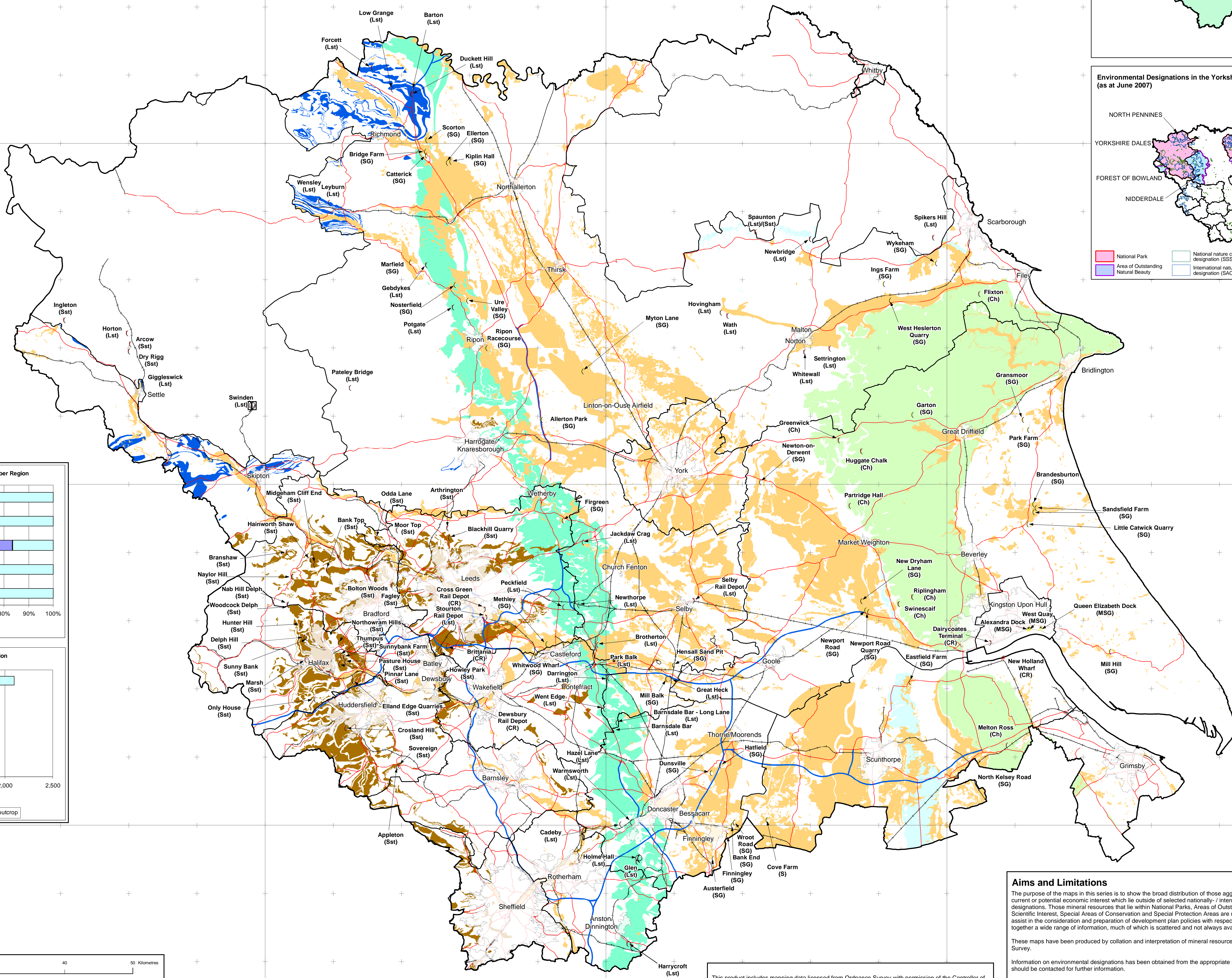
Mineral resources within selected environmental designations are not shown (see Aims and Limitations)
Mineral resources covered by urban areas are shown as transparent



"Your use of any information provided by the British Geological Survey (BGS) is at Your own risk. Neither BGS nor the Natural Environment Research Council gives any warranty, condition or representation as to the quality, accuracy or completeness of the information or it's suitability for any use or purpose. All implied conditions relating to the quality or suitability of the information, and all liabilities arising from the supply of the information (including any liability arising in negligence) are excluded to the fullest extent permitted by law."

Environmental Designations in the Yorkshire and Humber Region
(as at June 2007)

	National Park		National nature conservation designation (SSSI)
	Area of Outstanding Natural Beauty		International nature conservation designation (SACs & SPA)



Aims and Limitations

The purpose of the maps in this series is to show the broad distribution of those aggregate mineral resources that may be of current or potential economic interest which lie outside of selected nationally-/internationally-recognised environmental designations. Those mineral resources that lie within National Parks, Areas of Outstanding Natural Beauty, Sites of Special Scientific Interest, Special Areas of Conservation and Special Protection Areas are not shown. The maps are intended to assist in the consideration and preparation of development plan policies with respect to aggregates extraction. They bring together a wide range of information, much of which is scattered and not always available in a convenient form.

These maps have been produced by collation and interpretation of mineral resource data held by the British Geological Survey.

Information on environmental designations has been obtained from the appropriate statutory body (Natural England) who should be contacted for further information.

The aggregate mineral resource data presented are based on the best available information, but are not comprehensive and their quality is variable. The inferred boundaries shown are, therefore, approximate. Mineral resources defined on the map delineate areas within which potentially workable minerals may occur. These areas are not of uniform potential and take no account of planning constraints that may limit their working. The economic potential of specific sites can only be proved by a detailed evaluation programme. Such an investigation is an essential precursor to submitting a planning application for mineral working. Extensive areas are shown as having no aggregate mineral resource potential, but some isolated mineral workings may occur in these areas.

The locations of those quarries active in 2005 and extracting aggregate either as a primary product or as a by-product of other mineral extraction are shown (including those that lie within the selected environmental designations). The locations of those wharves and rail depots active in 2005 and where known, are also shown. While the compilers have tried to ensure that the site details are as accurate as possible, any map of active quarries is a snapshot in time. Moving the extraction location as reserves become exhausted or a new extension starts production, and renaming of sites are regular occurrences. Also sites may cease to be active at any time.

This product includes mapping data licensed from Ordnance Survey with permission of the Controller of Her Majesty's Stationery Office © Crown Copyright and / or database right 2008. All rights reserved.
100037272

Digital AONB, SSSI, SPA, SAC boundaries © Natural England 2008.
Contact address:
Natural England, Northminster House, Northminster, Peterborough, PE1 1UA
Tel: 01733 455000, Fax: 01733 455103, Web page: www.naturalengland.org.uk

This publication has been produced by the British Geological Survey. Unless otherwise stated, British Geological Survey © NERC 2008. All rights reserved.

This publication (excluding logos) may be reproduced free of charge in any format or medium for research, private study or circulation within an organisation. This is subject to it being reproduced accurately and not used in a misleading context. The material must be acknowledged as © NERC copyright and the title of the publication specified.