

## **Integrated Environmental Modeling: A Vision and Roadmap for the Future**

Author List: Gerard F. Laniak<sup>1\*</sup>, Gabriel Olchin<sup>2</sup>, Jonathan Goodall<sup>3</sup>, Alexey Voinov<sup>4</sup>, Mary Hill<sup>5</sup>, Pierre Glynn<sup>5</sup>, Gene Whelan<sup>1</sup>, Gary Geller<sup>6</sup>, Nigel Quinn<sup>7</sup>, Michiel Blind<sup>8</sup>, Scott Peckham<sup>9</sup>, Sim Reaney<sup>10</sup>, Noha Gaber<sup>11</sup>, Robert Kennedy<sup>12</sup>, Andrew Hughes<sup>13</sup>

<sup>1</sup>US Environmental Protection Agency, Office of Research and Development

<sup>2</sup>US Environmental Protection Agency, Office of the Science Advisor

<sup>3</sup>University of South Carolina, Department of Civil and Environmental Engineering, USA

<sup>4</sup>University of Twente, Faculty of Geo-Information Science and Earth Observation (ITC), Netherlands

<sup>5</sup>US Geological Survey, National Research Program

<sup>6</sup>Jet Propulsion Laboratory, California Institute of Technology, USA

<sup>7</sup>Berkeley National Laboratory, USA

<sup>8</sup>Deltares, Netherlands

<sup>9</sup>INSTAAR, University of Colorado – Boulder, USA

<sup>10</sup>Durham University, Department of Geography, UK

<sup>11</sup>US Environmental Protection Agency, Office of the Administrator

<sup>12</sup>US Army Corps of Engineers, Engineer Research and Development Center

<sup>13</sup>British Geological Survey, Keyworth, UK

\* Corresponding Author. Tel +1 706 355 8316; fax +1 706 355 8302. E-mail address:

[laniak.gerry@epa.gov](mailto:laniak.gerry@epa.gov)

U.S. Environmental Protection Agency

960 College Station Road

Athens, Georgia 30605 USA

**Abstract:**

Integrated environmental modeling (IEM) is inspired by modern environmental problems, decisions, and policies and enabled by transdisciplinary science and computer capabilities that allow the environment to be considered in a holistic way. The problems are characterized by the extent of the environmental system involved, dynamic and interdependent nature of stressors and their impacts, diversity of stakeholders, and integration of social, economic, and environmental considerations. IEM provides a science-based structure to develop and organize relevant knowledge and information and apply it to explain, explore, and forecast the behavior of environmental systems in response to human and natural sources of stress. During the past several years a number of workshops were held that brought IEM practitioners together to share experiences and discuss future needs and directions. In this paper we organize and present the results of these discussions. IEM is presented as a landscape containing four interdependent elements: applications, science, technology, and community. The elements are described from the perspective of their role in the landscape, current practices, and challenges that must be addressed. Workshop participants envision a global scale IEM community that leverages modern technologies to streamline the movement of science-based knowledge from its sources in research, through its organization into databases and models, to its integration and application for problem solving purposes. Achieving this vision will require that the global community of IEM stakeholders transcend social, political, and organizational boundaries and pursue greater levels of collaboration. Among the highest priorities for community action are the development of standards for publishing IEM data and models in forms suitable for automated discovery, access, and integration; education of the next generation of environmental stakeholders, with a focus on transdisciplinary research, development, and decision making; and providing a web-based platform for community interactions (e.g., continuous virtual workshops).

Keywords: integrated environmental modeling, community of practice, roadmap, model integration

## **1.0 Introduction**

Integrated environmental modeling (IEM) is a discipline inspired by the need to solve increasingly complex real-world problems involving the environment and its relationship to human systems and activities (social and economic). The complex and interrelated nature of real-world problems has led to a need for higher-order systems thinking and holistic solutions (EPA, 2008b; Jakeman and Letcher, 2003; MEA, 2005; Parker et al., 2002). IEM provides a science-based structure to develop and organize multidisciplinary knowledge. It provides a means to apply this knowledge to explain, explore, and forecast environmental-system response to natural and human-induced stressors. By its very nature, it breaks down research silos and brings scientists from multiple disciplines together with decision makers and other stakeholders to solve problems for which the social, economic, and environmental considerations are highly interdependent. This movement toward transdisciplinarity (Tress et al., 2005) and participatory modeling (Voinov and Bousquet, 2010) fosters increased knowledge and understanding of the system, reduces the perception of ‘black-box’ modeling, and increases awareness and detection of unintended consequences of decisions and policies.

IEM concepts and early models are now more than thirty years old (Bailey et al., 1985; Cohen, 1986; Mackay, 1991; Meadows et al., 1972; Walters, 1986). With the emergence of problems related to regional-scale land-use management, impacts of global climate change, valuation of ecosystem services, fate and transport of nanomaterials, and life-cycle analysis, the application of IEM is growing. National and international organizations have commissioned studies to determine research directions and priorities for integrated modeling (Blind et al., 2005a, 2005b; EC, 2000; ICSU, 2010; NSF; Schellekens et al., 2011). Senior managers in government, academia, and commercial organizations are restructuring operations to facilitate integrated and transdisciplinary approaches (EPA, 2008b). Mid-level managers who realize that no single group has the comprehensive expertise needed for integrated modeling are actively pursuing inter-organization collaborations (e.g. Delsman et al., 2009, ISCMEM; OpenMI, 2009).

Environmental assessors are utilizing IEM science and technologies to build integrated modeling systems that will address specific problems at varying scales (Akbar et al., 2012, Bergez et al., 2012, Linker et al., 1999, Mohr et al., 2012, Quinn and Jacobs, 2006). Finally, policy developers

and decision makers are asking for and processing information synthesized from holistic systems-based modeling approaches (EPA, 2008b; ABARE-BRS, 2010).

The primary motivation and input for this paper are drawn from a series of workshops held during the past several years (Table 1). The workshops were open forums convened to share knowledge, experience, and future visions related to IEM. The workshops were attended by a cross-section of IEM practitioners including environmental modelers, software technologists, decision analysts, and managers. Participants represented government, academia, and the private sector.

The principal message from the workshops is a call to elevate solutions to key IEM issues and challenges to a level of community above individual groups and organizations. In effect, to establish an open international community environment for pursuing the ability to share and utilize the broad science of IEM by communicating ideas, approaches, and utilizing modern technologies and software standards. The purpose of this paper is to synthesize the knowledge and perspectives shared during the workshops and present a holistic view of the IEM landscape and a roadmap, consisting of goals and activities, to guide its navigation. The remainder of this introduction is intended to provide a definition of IEM relative to several similar terms, describe the role of IEM in the decision making and policy development<sup>1</sup> process, and establish a conceptual view of IEM as a landscape with interdependent elements. Sections 2 through 5 then present each element of the IEM landscape, including an integrated roadmap of activities that addresses the associated collection of issues and challenges. Conclusions and a summary are presented in Section 6.

---

<sup>1</sup> For efficiency, in this paper when we refer to decision making alone we intend to include policy development as well.

**Table 1. IEM Workshops**

Workshop Title	Sponsor	Date	Organizations Represented	Outputs
Environmental Software Systems Compatibility and Linkage Workshop	US NRC DOE	March 2000	▪ >40 attendees <sup>a,b,c,d,e</sup>	Report: NRC (2002)
Integrated Modeling for Integrated Environmental Decision Making	US EPA	January 2007	▪ >100 attendees <sup>b,f,g</sup>	Report: EPA (2007) White Paper: EPA (2008b)
Collaborative Approaches to Integrated Modeling: Better Integration for Better Decision making	US EPA	December 2008	▪ >50 attendees <sup>b,h,i,j,k,l,m,n,r,t,v</sup>	Report: EPA (2008a)
<u>iEMSs 2010 Conference</u> <u>Science session</u> : Integrated Modeling Technologies <u>Workshop</u> : The Future of Science and Technology of Integrated Modeling	iEMSs	July 2010	▪ >75 attendees <sup>b,e,j,m,n,p,v</sup> ▪ International Conference (most organizations listed below and others)	This roadmap paper
The International Summit on Integrated Environmental Modeling	BGS USGS US EPA	December 2010	▪ >50 attendees <sup>a,b,d,e,h,l,m,o,v</sup> ▪ International Conference (most organizations listed below and others)	Report ( <a href="https://iemhub.org/resources/386/supportingdocs">https://iemhub.org/resources/386/supportingdocs</a> )

<sup>a</sup>US NRC: US Nuclear Regulatory Commission (<http://www.nrc.gov/>)

<sup>b</sup>US EPA: US Environmental Protection Agency (<http://www.epa.gov/>)

<sup>c</sup>DOE: Department of Energy (US) (<http://energy.gov/>)

<sup>d</sup>US ACoE: US Army Corps of Engineers (<http://www.usace.army.mil/>)

<sup>e</sup>NGO: Non-Governmental Organizations

<sup>f</sup>EC: Environment Canada (<http://www.ec.gc.ca/>)

<sup>g</sup>EU: European Union (<http://europa.eu/>)

<sup>h</sup>ISCMEM: Interagency Steering Committee for Multi-media Environmental Modeling (US Federal Agencies) (<http://iemhub.org/topics/ISCMEM>)

<sup>i</sup>CEH UK: Center for Ecology and Hydrology, UK (<http://www.ceh.ac.uk/>)

<sup>j</sup>iEMSs: International Environmental Modeling and Software Society (<http://www.iemss.org/society/>)

<sup>k</sup>OGC: Open Geospatial Consortium (<http://www.opengeospatial.org/>)

<sup>l</sup>CUAHSI: Consortium of Universities for the Advancement of Hydrologic Science, Inc. (<http://www.cuahsi.org/>)

<sup>m</sup>OpenMI: Open Modeling Interface (Association) (<http://www.openmi.org/>)

<sup>n</sup>USDA: US Department of Agriculture (<http://www.usda.gov/>)

<sup>o</sup>CSDMS: Community Surface Dynamics Modeling System ([http://csdms.colorado.edu/wiki/Main\\_Page](http://csdms.colorado.edu/wiki/Main_Page))

<sup>p</sup>NRC (Italy): National Research Council (Italy) (<http://www.cnr.it/sitocnr/Englishversion/Englishversion.html>)

<sup>q</sup>NSF: National Science Foundation (<http://www.nsf.gov/>)

<sup>r</sup>ONR: Office of Naval Research (US) (<http://www.onr.navy.mil/>)

<sup>s</sup>NASA: National Aeronautics and Space Administration (US) (<http://www.nasa.gov/>)

<sup>t</sup>USGS: US Geological Survey (<http://www.usgs.gov/>)

<sup>v</sup>NOAA: National Oceanic and Atmospheric Administration (US) (<http://www.noaa.gov/>)

<sup>v</sup>BGS: British Geological Survey (<http://www.bgs.ac.uk/>)

## 1.1 Related Terms

Within the literature, multiple terms related to “integrated environmental modeling” create a distracting confusion for practitioners and users alike. From our view, the terms are more similar than dissimilar; and are collectively defined within the greater context of environmental decision making and policy development (see Box 1). In any of the definitions, we perceive the term **integrated** to convey a message of holistic or systems thinking (*sensu* Tress et al., 2005) and **assessment** as a message of decision or policy relevance (Tol and Vellinga, 1998), while **modeling** indicates the development and/or application of computer based models.

### Box 1: Terms Related to Integrated Environmental Modeling

- **Conventional Modeling:** a process of creating a simplified representation of reality to understand it and potentially predict and control its future development. Models are generally single purpose (i.e., represent a single modeling discipline) and can come in a variety of forms and implementations, including mental, verbal, graphical, mathematical, logical, physical, etc. (Voinov, 2008).
- **Integrated Modeling:** includes a set of interdependent science-based components (models, data, and assessment methods) that together form the basis for constructing an appropriate modeling system (EPA, 2008b; 2009).
- **Integrated Assessment:** seeks to provide relevant information within a decision making context that brings together a broader set of areas, methods, styles of study, or degrees of certainty, than would typically characterize a study of the same issue within the bounds of a single research discipline (Parson, 1995; Weyant et al., 1996; Jakeman and Letcher, 2003).
- **Integrated Assessment Modeling:** an analytical approach that brings together knowledge from a variety of disciplinary sources to describe the cause-effect relationships by studying the relevant interactions and cross-linkages (Rotmans and van Asselt, 2001; Rosenberg and Edmonds, 2005).
- **Integrated Environmental Decision Making:** an approach for evaluating complex environmental problems holistically by integrating resources and analyses to address the problems as they occur in the real-world; including input from appropriate stakeholders (EPA, 2000).
- **Participatory Modeling:** a generic term used for modeling strategies that rely upon stakeholder involvement and participation in various forms. In various applications also known as group model building, mediated modeling, companion modeling, shared vision planning, participatory simulation, etc. (Voinov and Bousquet, 2010).

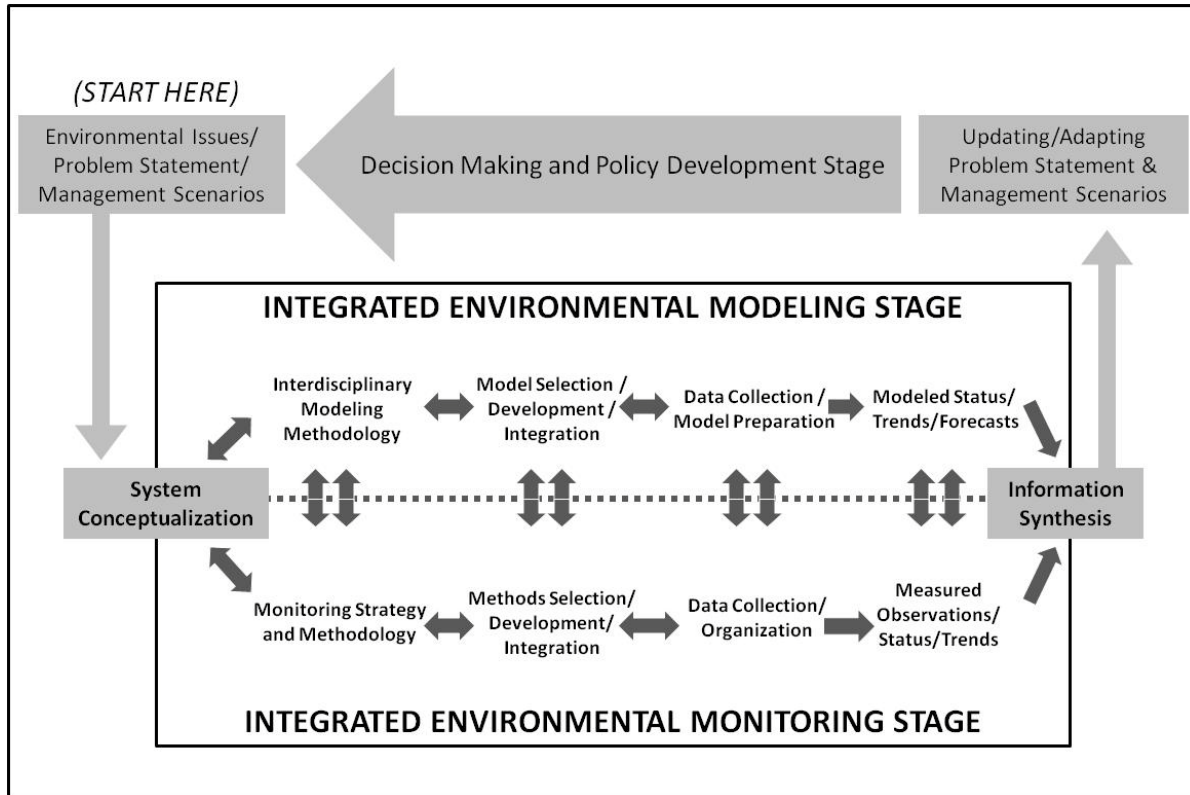
## 1.2 The Environmental Decision and Policy Development Process and the Role of IEM

The environmental decision and policy development process is illustrated in Figure 1; similar descriptions are presented by others (CMP, 2007; Jakeman et al., 2006; Liu et al., 2008; van Delden et al., 2011; Zagonel, 2002). The process can be described as a loop containing two principal stages: decision/policy and modeling/monitoring. Stakeholders in this process can be grouped by stage. *Decision stakeholders* are primarily concerned with the problem, its impacts, representation of interests/concerns, management scenario development, and decisions related to solving the problem. *Science stakeholders* are primarily concerned with the organization and application of science-based knowledge in the form of data, models, and methods for the purpose of informing decisions.

The process begins in the decision/policy stage with the formulation of a problem statement that defines the causes of concern, policy or decision context, boundaries and objectives, management scenarios and options, solution criteria (including tolerance for uncertainty), and resource constraints. The decision stage is coupled to the modeling/monitoring stage by the system conceptualization, which represents a high level view of the social-economic-environmental system within which the problem occurs. It represents the common view of the system constructed jointly by all stakeholders. Formulating the system conceptualization requires the merging of often different world views held by the stakeholders. The conceptualization forms the basis for developing a detailed modeling- and/or monitoring-based solution. The relevant science, in the form of models, data, and assessment strategies, is organized and executed in the modeling stage. The modeling stage is coupled back to the decision stage by a process of information synthesis which consolidates and interprets modeling results for use by decision makers. Feedback and iteration within and across these stages are essential aspects of the modeling (Jakeman, et al., 2006) and stakeholder-driven IEM and decision processes.

The role of the IEM modeler in the decision/policy process is often not limited to the modeling stage or the technical details of the modeling effort. Kragt et al., (2012) presents an in depth discussion of the various roles modelers may play in structuring and executing integrative research projects. Because of the modelers natural systems orientation he/she may perform roles

that include facilitator, knowledge broker, technical specialist, and leader. These roles are equally applicable in the larger decision/policy context.



**Figure 1: The Integrated Environmental Modeling and Decision Process**

### 1.3 IEM Landscape

To organize the myriad of topics discussed during the workshops and provide an intuitive structure for presenting the roadmap, we characterize IEM as a landscape and recognize four interdependent elements: applications, science, technology, and community. These elements are presented in Box 2 with descriptions that reflect the current and envisioned future of IEM. In the following sections, we briefly discuss these elements from the perspective of current practices and the issues and challenges that must be addressed to advance IEM. To address the issues and challenges, a set of activities in the form of a roadmap are organized and presented.

**Box 2. Envisioned IEM Landscape**

**1. IEM Applications** reflect problem formulations and solution approaches that are transparent and holistic,



establishing a view of the human-environmental system that recognizes the interdependent relationships among responsible organizations, management scenarios (decision options), co-occurring stressors, the environment, and socio-economic structures. This integrative systems approach engages all stakeholders throughout the decision process.

**2. IEM Science** is transdisciplinary, involving the integration of social, economic, and environmental science into modeling systems that describe and forecast the behavior of the human-environmental system in response to natural and human induced stress. The science provides methods for model evaluation, including the characterization and communication of model sensitivities and uncertainty to inform both decision and science stakeholders according to their role and related needs for information. IEM is recognized as a science discipline and is taught in schools and universities.

**3. IEM Technology** provides the means to express, integrate, and share the science of IEM. It provides standards and tools to facilitate the discovery, access, and integration of science components (data, models, and assessment strategies) by stakeholders worldwide. Integrated modeling systems are constructed and executed on a variety of platforms serving research, applications, and education at a variety of spatial, temporal and complexity scales.

**4. A Community** of IEM stakeholders and associated organizations engages in, invests in, and contributes to, the shared and open development of integrated environmental science and related computer-based technologies. The community is open and grows to further engage scientists, engineers and educators, as well as interested or concerned citizens, decision makers, and their associations and gains their support for the development and application of IEM.

## 2.0 IEM Applications

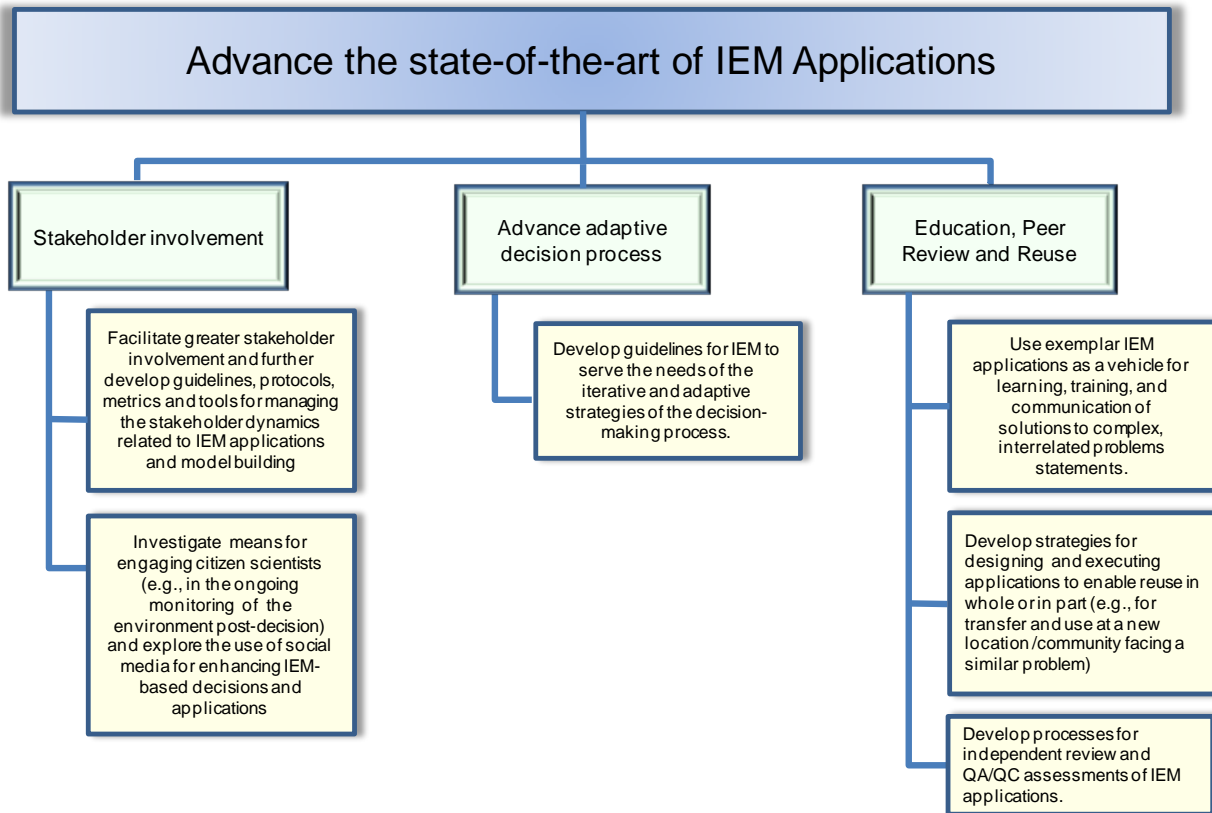
IEM applications are the stakeholder community's methods for defining, selecting, integrating, and processing the combination of environmental, social, and economic information needed to inform decisions and policies related to the environment (i.e., implementation of the process shown in Figure 1). During the past two decades, there has been a steady evolution toward IEM in the range and complexity of environmental issues and problems, related decisions and policies, and the modeling performed to inform the decisions. While decision makers will continue to address traditional problem sets involving environmental quality standards and compliance, management challenges are now framed in ecological, social, and economic terms (MEA, 2005). The literature contains a growing number of studies involving the application of integrated environmental modeling concepts and approaches. Table 2 lists a number of such examples organized by dominant IEM characteristics.

Dominant themes throughout workshop discussions concerning IEM applications included stakeholder involvement, adaptive management strategies, education, peer review, and

reusability. In the following sections we discuss these topics from the perspective of current practices, issues, and challenges that lead to the IEM science roadmap presented first, in Figure 2.

**Table 2. Examples of IEM Applications.**

Characteristics	Context	Examples and References
Inter-dependent relationships among multiple stressors, multiple environmental compartments, and multiple endpoints	San Joaquin River Deep Water Ship Channel, Stockton, CA USA	Jassby and Cloern (2000); Lehman et al., (2001); Quinn and Jacobs, (2006)
	Venice Lagoon, Italy	Sommerfreund et al., 2010
	Life-cycle analyses of chemical-based stressors at a global scale	Sleeswijk and Heijungs, 2010
	Pinios River, Greece	Makropoulos et al., 2010
	Groundwater-surface water flooding in United Kingdom basins	Hughes et al., 2011
Ecological applications focused on decision/policy objectives with alternative management strategies	Quantifying the trade-offs among ecosystem services in complex, dynamic systems.	Farber et al. (2006)
	Agent-based modeling of land use and land cover.	Bolte et al. (2006) and Guzy et al. (2008)
	Willamette River Basin, Oregon, USA	Hulse et al. (2008)
	Unified metamodel of the biosphere	Boumans et al. (2002)
		See also: Maxwell and Costanza (1995); Daniels (1999); Noth et al., (2000); Costanza et al. (2002); Sengupta and Bennet (2003); Schaldach et al. (2011)
Applications involving a diverse set of stakeholders	Multi-criteria integrated resource assessment with science and decision stakeholders	Stahl et al., 2011 and 2002
Solutions requiring holistic systems-based approaches that involve integration of multidisciplinary data, models, and methods and facilitate adaptive management strategies	Emergency preparedness	Akbar et al., (2012)
	National scale risk policy	Babendreier and Castleton (2005)
	Natural resource management	Johannes 1998, Shea et al., 2002, McCarthy and Possingham, 2007



**Figure 2 : IEM Applications Roadmap**

### 2.1 Stakeholder involvement

Stakeholders have become an intrinsic part of the systems analytical approach, which is essential for environmental management. The idea of transdisciplinarity is based on stakeholder involvement in solving multi-disciplinary problems, where stakeholders are used to improve the understanding across formal and informal knowledge bases and to glue together the data and theories originating from different disciplines. The definition of stakeholders in this case is quite broad (Krueger et al., 2012) and in the case of IEM applications includes experts (scientists, engineers, educators, and decision makers) as well as non-experts (in the traditional sense). An often overlooked but potentially valuable group of stakeholders is represented by citizen-science networks. Citizen-science networks can contribute in many different ways, including direct

monitoring of natural resources and environmental conditions<sup>2</sup>, facilitate knowledge transfer between scientists and lay public, test IEM and monitoring technologies and processes (e.g. Smartphone apps), and provide historical knowledge and local stakeholder continuity to ensure persistence and improvement of IEM application efforts.

While the importance and value of involving the full stakeholder community in the decision and application process is recognized there remains a significant need for guidelines for managing, facilitating, and reporting the dynamic interactions among stakeholders (Arciniegas et al., 2012). These interactions are critically important in establishing a common understanding and appreciation of the problem, the relevant social-economic-environmental system, the role of modeling, and the information provided by the modeling. The process of merging differing world views, priorities, and value systems into a unifying and objective approach to problem elucidation and resolution will require social science expertise (Kalaugher et al., 2012). Additional issues related to the science content of these interactions are discussed in Section 3.1.

## **2.2 Adaptive Decision Process**

Adaptive management (AM) refers to the realization that with respect to the complexities of the human-environmental system we are “learning as we go”. IEM-based decisions and policies are based on existing knowledge, understanding, and observations and often prove to fall short in terms of intended outcomes. There is, therefore, an intrinsic need for iteration and adaptation in the decision process. Combined with integrated modeling, adaptive management provides the stakeholder community with a means to jointly build an understanding of the system, conduct experiments related to the exercise of management options, and refine and update management strategies when coupled with ongoing monitoring.

According to Stankey et al. (2005), the specific idea of AM, as a strategy for natural resource management, can be traced to the seminal work of Holling (1978), Walters (1986), and Lee (1993). It is a framework that promotes iterative learning-based decision making (Holling, 1978) from management outcomes and making adjustments as understanding improves (Williams, 2011) and will probably never converge to a state of equilibrium involving full knowledge and

---

<sup>2</sup> <http://creekwatch.researchlabs.ibm.com/>

optimum productivity (Walters, 1986). Walters (1986) defined AM as consisting of three essential tasks: structured synthesis and analysis, use of formal techniques that consider uncertainties and result in optimal decisions and policies, and design and implementation of monitoring programs to collect data needed to measure the effectiveness of decisions and advance system understanding. Bormann et al. (1994) defined four phases (plan, act, monitor, and evaluate), whereas CMP (2007) identified five steps (conceptualize, plan and monitor, implement and monitor, analyze/use/adapt, capture/share learning), where monitoring is an important component in each approach.

Implementing adaptive management strategies is complicated by the involvement of a diverse stakeholder community and the idea that complex problems have many potential solutions, each perhaps appealing to a subset of the stakeholder community. The challenge for IEM is to reflect this adaptive management process in the design and execution of applications and, in particular, building modeling systems that can elucidate these solutions and the implications of choosing one versus another (Van Delden et al., 2011, Voinov and Bousquet, 2010).

### **2.3 Education, peer review, and reuse**

A review of current applications shows a wide range of approaches for designing, executing, and documenting applications, making it difficult to understand, review, and reuse applications. Rouwette et al., 2002 review the system dynamics literature in an attempt to characterize the effectiveness of such stakeholder driven model building exercises. They found a similarly wide variation in approaches and present guidelines for reporting the process and assessing effectiveness. To improve this situation for IEM, there is a need to move toward conceptual standardization of the application process (i.e., defining and documenting the elements of IEM applications according to a community recognized process and set of practices).

IEM applications are resource intensive, and thus, the ability to reuse an application, in part or in whole, can result in significant resource savings and more problems and decisions served. To achieve reusability of applications will require formal documentation and archiving strategies that preserve not only the software technology utilized (data, models, etc.) but also the expertise that sets up, executes, and interprets the results of the modeling system. Assumptions and model

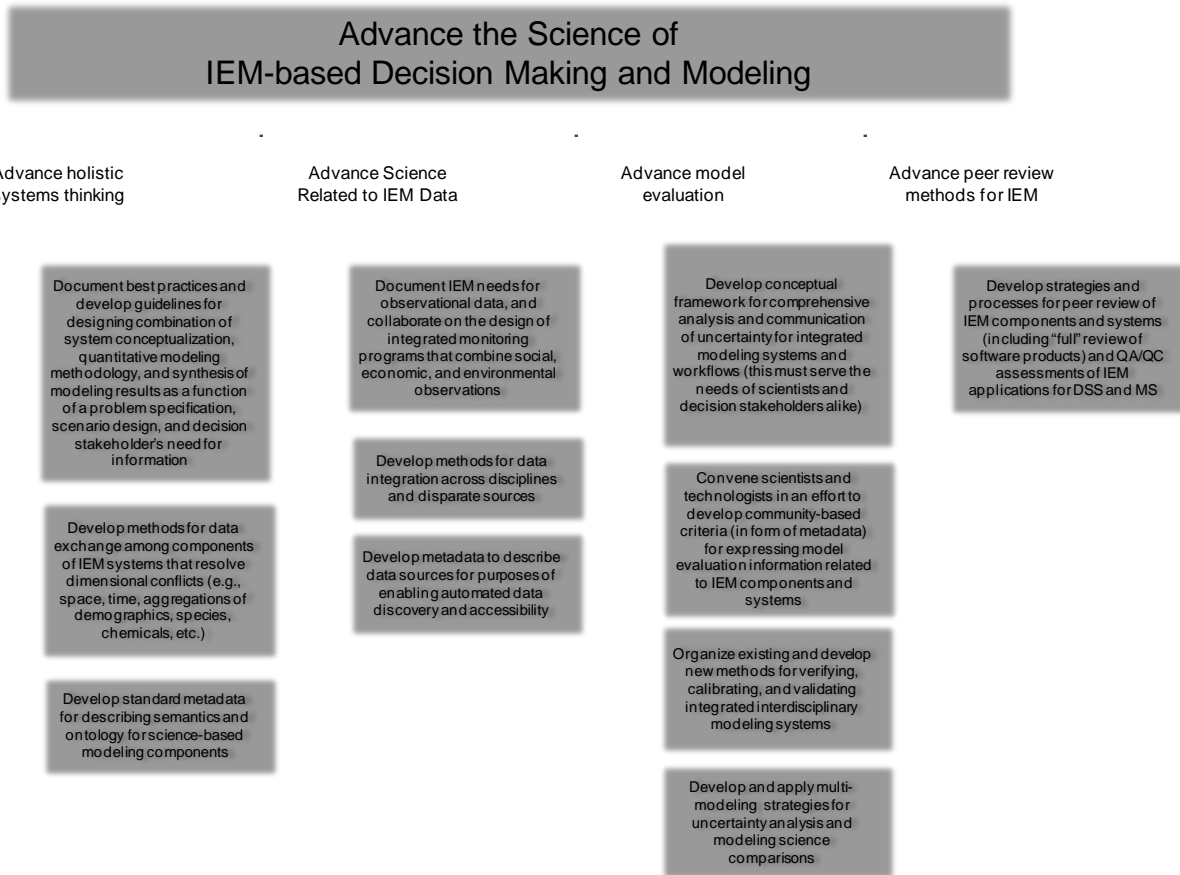
parameterization schemes should be documented in machine readable formats. Janssen et al., 2009 discuss these issues and propose the use of assessment project ontologies for describing and documenting scenarios and assessments. This level of documentation and transparency is also necessary to facilitate quality assurance and peer review.

### **3.0 IEM Science**

The science of IEM provides the knowledge and integrative strategies that support the decision process. In conducting the IEM process, scientists do not directly pursue new knowledge within individual disciplines, but rather concern themselves with issues that arise when domain-specific knowledge bases must be integrated. The goal is to construct and apply systems-based approaches to explore, explain, and forecast system response to changes in natural or managed environmental systems. Workshop discussions related to IEM science focused on several areas including holistic systems thinking and integrated modeling, data, model evaluation, and peer review. In the following sections we discuss these topics from the perspective of current practices, issues, and challenges that lead to the IEM science roadmap presented in Figure 3.

#### **3.1 Holistic Systems Thinking and Integrated Modeling**

At the core of IEM science is the concept of holistic thinking (i.e., assessing a problem in the context of the larger system - of systems - within which it occurs). This systems approach is necessary to serve the decision makers' needs to understand the working system, compare impacts among decision scenarios, analyze trade-offs among options, ask "What if?" questions, avoid the creation or transfer of problems in pursuing solutions to the problem at hand, adapt strategies based on future monitoring of the system, and respond to unintended consequences.



**Figure 3: IEM Science Roadmap**

A primary challenge for IEM is the merging of knowledge domains into coherent and appropriately complex representations of the relevant system (Kragt et al., 2011; Lancaster, 2007; Otto-Banaszak et al., 2011; Voinov and Bousquet, 2010; Voinov and Gaddis, 2008; Zagonel, 2002). Coherence exists when modeling components are scientifically consistent across the system with respect to complexity, data requirements, and uncertainty (EPA, 2008b). Complexity is a direct function of the problem statement, decision objectives, system understanding, and data availability. It is not possible (and unnecessary) to include all known science related to the social, economic, and environmental disciplines (Liu et al., 2008; Oreskes 2003). The challenge is to determine which of the detailed processes are important in simulating the system behavior at an appropriate scale of application (Sidle, 2006). These challenges must be addressed in a consistent manner across each step of the modeling process, beginning with the formulation of a problem statement and followed by the system conceptualization, an integrated modeling methodology, and the synthesis of the modeling results (Hinkel, 2009; Liu et al.,

2008). We discuss each of these modeling steps to emphasize the manner in which IEM issues and challenges manifest and also to point out that to efficiently share IEM science products across the global community we will need to be more explicit and compartmentalized in our implementations.

A problem statement is a question that requires the application of a structured approach to a solution. A problem statement contains a targeted interest or concern, context, objectives, questions to be answered, scenarios, solution criteria (i.e., tolerance for uncertainty), and available resources (Arnold, 2012 presents an interesting discussion of this topic from the perspective of the resource manager). The purpose of the problem statement is to provide the information needed to guide the subsequent steps of an IEM application. Decision stakeholders are primarily responsible for the content of the problem statement and the science stakeholders must ensure that the content is sufficiently focused and detailed to achieve its purpose. Currently, there are no widely accepted protocols for developing and documenting problem statements. A challenge for IEM is to establish appropriate guidelines for defining and documenting the full expression of a problem statement.

System conceptualization captures the essence of the real-world problem including the processes, cycles, and flows that characterize the relevant social-economic-environmental components of the system (Fischenich, 2008). System conceptualization serves as a basis for communication between decision and science stakeholders. Several methods for creating and documenting a conceptual model have been developed. Luna-Reyes (2003) presents examples of mapping tools used to graphically represent dynamic systems. Other methods, based upon specific quantitative modeling approaches, include systems dynamics (Boumans et al., 2002; Fenner et al., 2005; Muetzelfeldt and Masheder, 2003), fuzzy cognitive mapping (Özesmi and Özesmi, 2004; Samarasinghe et al., 2012), and Bayesian inference (Reckhow, 2003).

Despite the availability of methods and evidence that engaging stakeholders in the system conceptualization process is a growing priority (Voinov and Bousquet, 2010) their wide spread use across the community of IEM remains an issue. There is a need to promote best practices



with respect to the social process of eliciting and merging the array of stakeholder mental models.

The integrated modeling methodology is a combination of a modeling system and an implementation strategy. The modeling system represents an integration of data and knowledge from across relevant science domains and represents the quantitative and computational form of the conceptual model. The mathematical form of the modeling system may be empirical, statistical, process-based, or a combination of the above (Linker et al., 1999; Hart et al., 2009; Schwarz et al., 2006). The implementation strategy specifies how the modeling system will be deployed in the context of an IEM application. Deployment may include such strategies as applying the modeling system to representative locations across a regional or national landscape (Marin et al., 2003), executing the modeling system within a Monte Carlo simulation protocol to address uncertainty (Johnston et al., 2011), or applying the modeling system repeatedly within an adaptive management strategy (Akbar et al., 2012). Multiple implementation strategies may be applied with the same modeling system.

Key science aspects of these integrated systems are ensuring the conceptual compatibility among the components (ontology) and specification of the information to be exchanged between components (semantics). Achieving semantic and ontological consistency is particularly challenging for IEM system design due to the transdisciplinary nature of components and the common practice of linking existing modeling components (e.g., legacy models) not originally designed for such integration. Voinov and Cerco (2010) and Voinov and Shugart (2012) discuss these issues and point out several challenges and potential pitfalls regarding the construction of IEM systems.

No general guidelines, best practices, or standards exist for defining and harmonizing the semantic and ontological information. In practice, these issues are resolved either implicitly or explicitly by the development team responsible for the integration of modeling components. For example, Akbar et al., 2012, in building an emergency response modeling system, select a fixed set of models on the basis of ontological consistency and specify a mapping of variables from one model to another. FRAMES (Johnston et al., 2011) defines data dictionaries that contain

semantics that reflect controlled vocabularies and relationships among the variables. Each dictionary represents a standard set of information either produced or consumed by a type of model (e.g., watershed model) and thus allows for application specific configuration of models. Ontological consistency is enhanced with the data dictionaries but not ensured. Finally, SEAMLESS (van Ittersum et al., 2008) defines formal expressions of the combined semantics and ontologies associated with the modeling components needed to construct workflows for agricultural based modeling assessments. Any modeling component that conforms to these definitions can be used in the workflows with assurance of both semantic and ontological consistency.

The challenge for the IEM community is to expose and standardize the model integration process and explicitly express a model’s semantics and ontology, thus facilitating the ability to interoperate with a wider array of available models. To guide this movement toward higher degrees of interoperability, we look to Wang et al. (2009), who describe six levels of interoperability (Table 3) in order of increasing capacity for interoperation. Differences between these levels reflect the type and content of information to be exchanged, not the technology that implements the exchange. While some standards are available for expressing this information in software technology, until this science-based information is defined and standardized, it will not be possible to address the technology issues of software reuse and interoperability, which we will discuss further in Section 5.

**Table 3. Levels of Conceptual Interoperability Model (Adapted from Wang et al., 2009).**

<b>Level of Interoperability</b>	<b>Information Defined</b>	<b>Content Defined</b>
L6: Conceptual	Assumptions, constraints, etc.	Documented conceptual model
L5: Dynamic	Effect of data	Effect of information exchanged
L4: Pragmatic	Use of data	Context of information exchanged
L3: Semantic	Meaning of data	Content of information exchanged

L2: Syntactic	Structured data	Format of information exchanged
L1: Technical	Bits and bytes	Symbols of information exchanged
L0: None	NA	NA

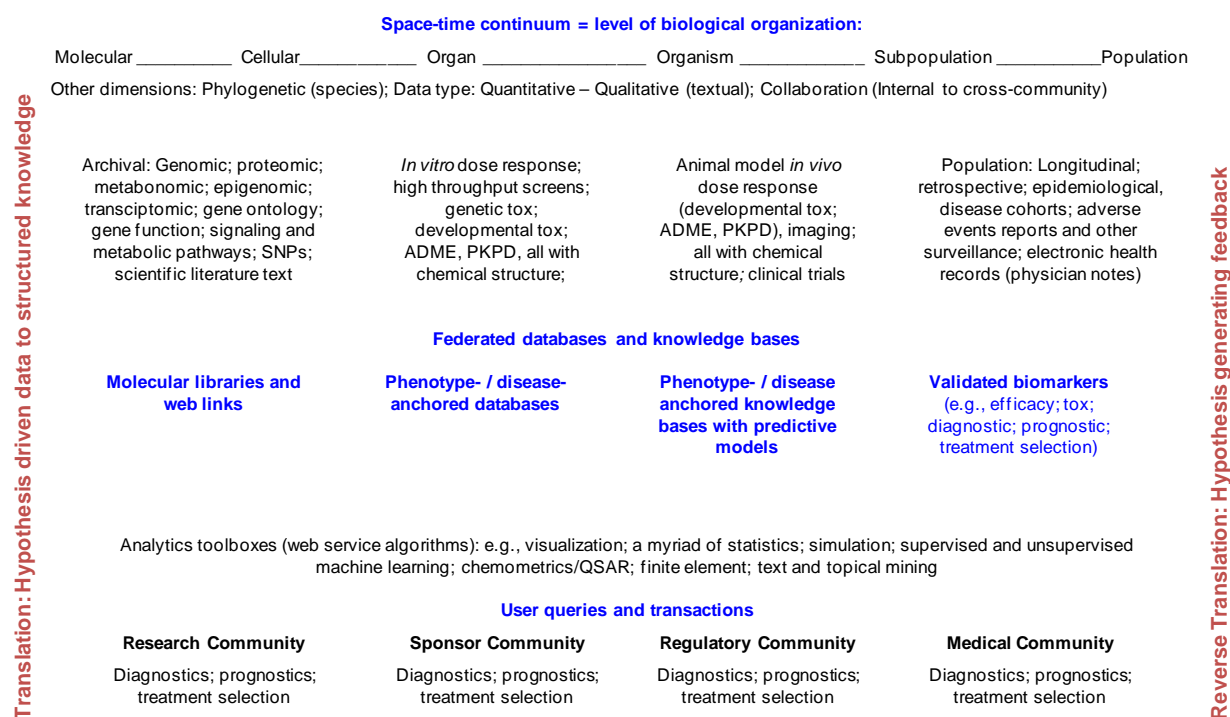
The final step of the modeling process, synthesis of modeling results, represents a key interface between science and decision stakeholders. The objective is to interpret, consolidate, and present the results of complex integrated modeling to stakeholders and decision makers. Synthesis must produce information that is not only of high scientific quality but also useful to the decision makers. McNie (2006) discusses the challenges of “reconciling the supply and demand” of scientific information between scientists and decision makers, defining “useful” as a combination of salient, credible, and legitimate information. Salience implies contextual relevance, credibility refers to scientific veracity, and legitimacy refers to a lack of bias. While scientists routinely synthesize results via scientific journals, the synthesis of scientific information for decision making is not well understood and executed (NRC, 2005). The challenge for IEM is to serve diverse users and stakeholders who may require multiple synthesization streams designed hierarchically to move seamlessly from very general displays of overall results to highly detailed, component-based visualizations (Ellarby and Kite, 2006; Liu et al., 2008).

Marin et al. (2003) and Babendreier and Castleton (2005) provide an example of a successful synthesis involving the application of 17 science-based models to predict national-scale human and ecological exposure and risk due to chemical releases from waste disposal facilities. The effort included hundreds of thousands of individual simulations and resulted in output too voluminous to store, much less hand to the decision makers. A database of modeling results was constructed along with a graphical user interface to allow decision makers to ask and receive answers to very specific policy questions related to risks, protection levels, human versus ecological impacts, etc. Identifying and promoting exemplars will help focus attention on this important science issue.

### **3.2 Data for IEM**

Environmental, social, and economic data drive model development, application, and evaluation. Discovering, accessing, processing, and preparing data for IEM tasks is particularly challenging due to a combination of cross-disciplinarity, volume, and disparate sources presenting data with varying formats and semantics.

Figure 5 describes an integration framework that illustrates the typical data and processing needs for an agency like the US Food and Drug Administration. In this example, data reflecting biological levels ranging from molecular to population are contained in a series of databases owned and maintained by a variety of institutions. Viewed generically, this example illustrates the IEM data challenge described above.



**Figure 5. Integration framework for FDA Scientific Computing Strategic Plan (After Perkins 2012).**

Recognizing these issues and the importance of data to decision making, many government agencies and offices are consolidating access to environmental data. Table 4 summarizes several such efforts from the United States, Europe, and Australia.

**Table 4. Examples of data access initiatives of relevance to IEM**

<b>Initiative</b>	<b>Scope</b>	<b>Description</b>
Global Earth Observation System of Systems (GEOSS) <sup>a</sup>	Global	An international effort to coordinate a comprehensive monitoring of the state of the earth, study large scale processes, and predict behavior of the earth system
Infrastructure for Spatial Information in the European Community (INSPIRE) <sup>b</sup>	EU	The stated purpose is to assist in environmental policy making across national boundaries. The spatial information considered includes seventeen topical and technical themes originating from numerous sources throughout the EU
European Shared Environmental Information System (SEIS) <sup>c</sup>	EU	A web based system where public information providers share environmental data and information. In implementing SEIS, the EEA is building on existing reporting systems and tools: the INSPIRE directive, Global Monitoring for Environment and Security (GMES), and (GEOSS.)
Water Information Service for Europe (WISE) <sup>d</sup>	EU	Gateway to information on European water issues. It comprises a wide range of of data and information collected by EU institutions to serve several stakeholders.
Environmental Resources Information Network (ERIN) <sup>e</sup>	Australia	The objective is to organize environmental information from many sources and provide standards based tools for discovery, access, and use. The information includes maps, species distributions, documents and satellite imagery, and covers environmental themes ranging from endangered species to drought and pollution
Environmental Dataset Gateway (EDG) <sup>f</sup>	US	A gateway developed by the US EPA to web-based information and services. It enables data consumers to discover, view and access data sets, as well as geospatial tools. Users also have the ability to catalog and maintain their geospatial metadata contributions via the EPA Metadata Editor Tool
National Ecological Observation Network (NEON) <sup>g</sup>	US	Collection of data across the United States on the impacts of climate change, land use change and invasive species on natural resources and biodiversity. Designed to detect and enable forecasting of ecological change at continental scales over multiple decades.
US based Consortium of Universities for the Advancement of Hydrologic Science, Inc. (CUAHSI) <sup>h</sup>	US	Developing the Hydrologic Information System (HIS), an internet-based system that provides for sharing hydrologic time series data contributed by a wide range of providers, including the National Water Information

		System of the US Geological Survey.
--	--	-------------------------------------

<sup>a</sup> <http://www.earthobservations.org/index.shtml>

<sup>b</sup> <http://inspire.jrc.ec.europa.eu/index.cfm/pageid/48>

<sup>c</sup> <http://ec.europa.eu/environment/seis/>

<sup>d</sup> <http://water.europa.eu/>

<sup>e</sup> <http://www.environment.gov.au/erin/about.html>

<sup>f</sup> [https://iaspub.epa.gov/sor\\_internet/registry/edgreg/home/overview.do](https://iaspub.epa.gov/sor_internet/registry/edgreg/home/overview.do) & <https://edg.epa.gov/EME/>

<sup>g</sup> <http://neoninc.org>

<sup>h</sup> <http://his.cuahsi.org>

As seamless access to data becomes available, the next challenge is to process and transform the data for use in IEM systems. The gateways, like IEM systems, are designed with internal semantic and ontological consistency but not for seamless integration across systems. This data integration task requires reconciliation of varying semantics and establishing a system's level operational ontology that honors the relationship among physical, chemical, and biological entities across the components. This may include such procedures as statistical processing (e.g., averaging, interpolation, etc.), geo-processing (e.g., re-projection, clipping overlays, merging, etc.), and processing specific to physical interfaces between elements of the modeling domain (e.g., catchment and stream segment connectivity). Currently, the execution of this process for individual applications can be characterized as a semi-automated task of discovering data sources and subsequently cutting and pasting file fragments to form a single coherent dataset.

Enhanced solutions to this issue are beginning to emerge. The GEON<sup>3</sup> (Ludascher et al., 2003) is an open collaborative project funded by the US National Science Foundation to develop cyberinfrastructure with the ultimate goal of linking heterogeneous scientific data and information for the purposes of knowledge discovery, sharing, and integration into scientific workflows. Data for Environmental Modeling (D4EM - Johnston et al., 2011) is an open source software system developed expressly to access, retrieve, and process data for IEM. D4EM is currently linked to several US Government databases and performs all data processing required to serve data directly to an integrated modeling system designed to simulate interactions among watersheds and aquatic ecosystems. CUAHSI (Maidment et al., 2009) has designed and implemented standards for exchanging hydrologic data over the web including the WaterOneFlow web services and the Water Markup Language (WaterML). These were used to

---

<sup>3</sup> <http://www.geongrid.org/>

construct a Hydrologic Information System with a service-oriented architecture and able to integrate hydrologic observational data from international, federal, state, local, and academic data providers (Tarboton, 2011). The design principle is to keep databases separate and autonomous while providing standards that allow software programs to query and extract data from them using standardized approaches (Goodall et al., 2008; Horsburgh, 2009). Other important efforts include the development of controlled vocabularies that promote common referencing and facilitate variable matching across sources. Examples include the NetCDF Climate and Forecast (CF) Metadata Convention<sup>4</sup> and the Consortium of Universities for the Advancement of Hydrologic Science, Inc - Hydrologic Information System (CUAHSI- HIS) Controlled Vocabulary<sup>5</sup> for hydrology data (Beran and Piasecki, 2009). Applying and integrating these techniques and technologies to the larger data domains of IEM is an important need.

### **3.3 Model Evaluation**

Model evaluation combines quantitative and qualitative information about a modeling system's appropriateness and effectiveness for the problem and ability to characterize the uncertainty of model predictions. Key attributes of model evaluation are transparency, refutability, and uncertainty quantification. Together, they establish the scientific veracity and stakeholder confidence/acceptance of an application and the information it produces. Transparency requires that all aspects of the application design and execution be accessible to facilitate understanding and reproducibility. Refutability requires a hypothesis-testing framework in which data are used in specific ways to test the model's ability to simulate the system of interest. This may require the involvement of decision stakeholders because the ultimate test of a model is always its utility and usability by end users. Refutability is difficult for any model of an environmental system, and evaluating an IEM system is even more challenging.

Challenges related to uncertainty quantification of predictions in integrated modeling were experienced in recent climate change modeling (e.g. IPCC, 2007). In Table 5, we describe basic model evaluation methods developed for conventional modeling that have characteristics advantageous to IEMs. Several textbooks on these subjects have been produced in recent years

---

<sup>4</sup> <http://cf-pcmdi.llnl.gov/>

<sup>5</sup> <http://his.cuahsi.org/mastercvdata.html>

(Menke, 2012 and Aster et al., 2005 from geophysics; Beven, 2009; Clark et al., 2011; and Hill and Teideman, 2007 from hydrology; and Saltelli et al., 2008 from econometrics), and an active scientific community continues to explore new methods. Further, Matott et al. (2009) note that a great deal of literature has been published on model evaluation ranging from introductory descriptions to uncertainty analyses to methodological applications. They cataloged 65 different model evaluation tools for applicability across seven thematic model evaluation methods including data analysis, identifiability analysis, parameter estimation, uncertainty analysis, sensitivity analysis, multimodel analysis, and bayesian networks. They evaluated these tools based on the number of literature citations, robustness of documentation, and form of software distribution.

Application of these ideas to more complicated IEMs is only beginning to emerge, (Ascough et al., 2008; Bastin et al., 2012; Beven, 2007; McIntosh et al., 2011; Refsgaard et al., 2007), and there is still much to learn in developing methods and case studies. It is expected that the growing use of IEMs will test the limits of these existing methods and lead to additional innovations.

### **3.4 Peer Review**

An important consideration discussed during the workshops is the challenge related to peer review of IEM integrated science as expressed through technology and applications. The transdisciplinary nature of the modeling challenges presents challenges to individual peer reviewers representing a particular science domain. Certainly, this level of review is necessary; however, there is concern whether it is sufficient with respect to integration issues, especially given the implicit manner in which integration issues are resolved and documented. Peer review of applications involving a wide array of stakeholders, each capable of varying degrees of understanding, also represents a challenge. Each application should be reviewed from the perspective of each stakeholders knowledge base and perspective. Finally, the peer review of implementation technologies represents a significant time resource requirement. Verifying that the science has been implemented correctly in software presents significant issues in an IEM world, where the technological implementations vary widely in terms of design, software/hardware, documentation, and testing. New means of ensuring the veracity of the



science-based products and applications represents a prime challenge to the IEM science community.

**Table 5. Summary of methods used for model evaluation**

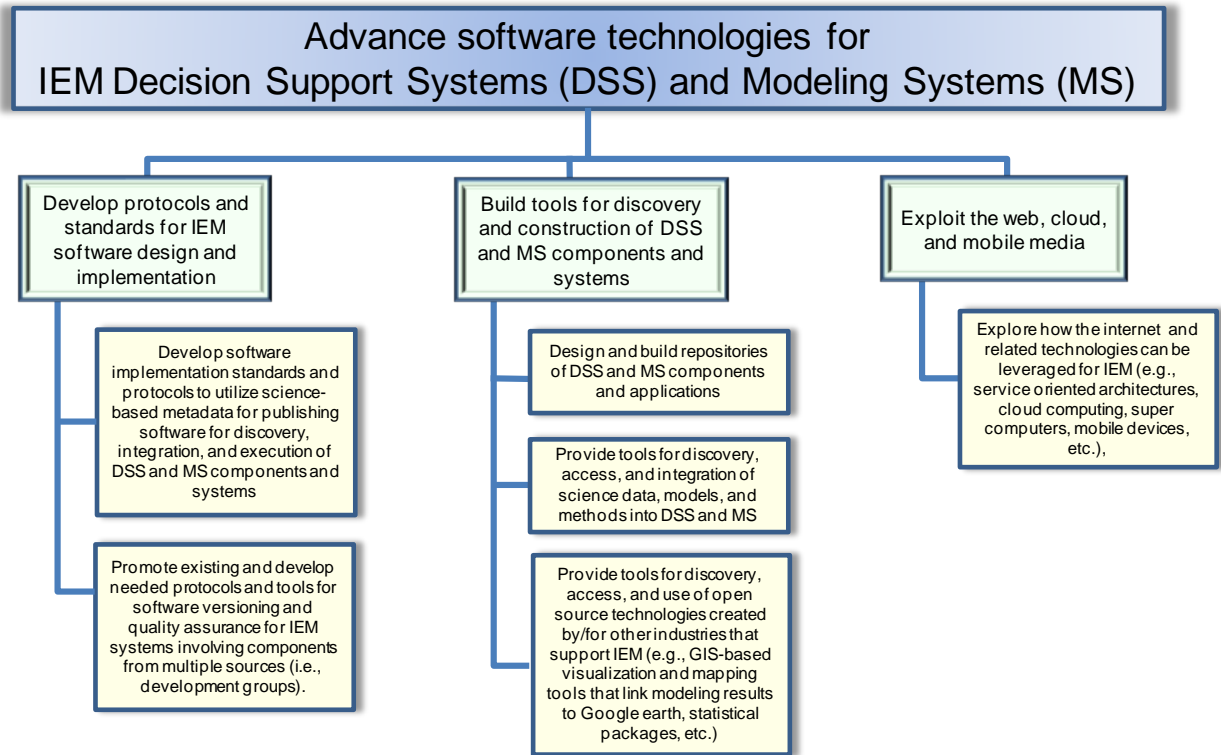
<b>Technique</b>	<b>Description</b>
Error evaluation and propagation	Starts with data used to construct the component and IEM models, and proceed to the analysis of predictions relative to observations. This is critical to IEMs because data availability and errors in one part of the system invariably affect uncertainties in other parts.
Error-based weighting	Critical to integrated use of data in IEMs; is complicated by need to synchronize weights among various disciplines since variations in the importance of processes and data may occur.
Sensitivity analysis	This can be conducted by combining computationally efficient local linear methods, efficient global screening methods, and computationally expensive global variance methods. Linear methods are attractive for IEMs with relatively few parameters they may require only on the order of 10s of model runs to obtain useful results.
Alternative models	Important in IEM model development to assess effects of conceptual model uncertainty. Alternative conceptualizations often affect more than one aspect of the system. Integrated models allow consequences to be represented realistically throughout the system simulation (e.g., the hydrologic cycle, Clark et al., 2011).
Automated calibration methods	These are used to improve objectivity and reproducibility. The optimization process can identify the information content of a given set of observations and, along with sensitivity analysis methods, can identify important new data. For IEMs, this can be particularly challenging because of the number of linked/coupled component models involved.
Uncertainty Quantification	IEM models require both knowledge and uncertainty from different system components to be integrated into a unified expression of uncertainty quantification. Existing methods should be reviewed and applied considering the computational demands of the model and requirements of end users of model results.
Model Tests	Should be undertaken against alternative data sets. In IEM, it is important to test component models; integration requires additional tests throughout the IEM.
Post-Audits	Comparing model predictions to the observed results (a true post-audit) requires monitoring. IEMs provide important opportunities for post-audits because simulated results can affect resources important to large ecological systems and many people. These opportunities are not easily pursued however, as post-audits of IEMs can also be very difficult because of long delays in observing impacts, confounding variables, changes in forcing drivers etc.
Calibration and testing in data scarce conditions	The likelihood of having complete datasets for extensive IEM analysis is low. Building representative data sets and uncertainty analyses have to be performed in data-scarce conditions. The models and theories can suggest specific monitoring to collect the most important data to help decrease uncertainty and facilitate adaptive management strategies.

## **4.0 IEM Technology**

Technology represents the primary means by which the science of IEM is expressed and applied. In this section we present two key topics that emerged as critical technological drivers for IEM from the workshop discussions. First is a discussion of modeling frameworks and standards for IEM software design and implementation. This section (4.1) provides background and context to inform the reader about the state-of-the-art, issues, and challenges associated with IEM modeling frameworks. It concludes with an argument for a universal standard for model integration that is compatible with framework-specific standards that already exist, but provides much needed interoperability across modeling frameworks. Second is a discussion of leveraging the World Wide Web for IEM. This section (4.2) presents modern and visionary work using concepts such as Cloud-based computing and web services to achieve a higher level of functionality in next generation IEM modeling frameworks. The section argues that a key goal of the IEM community must be to more effectively leverage the Web for publication, discovery, access, and integration of IEM information and software in order to achieve the ambitious goals set by the IEM community. Figure 6 presents the IEM technology roadmap, whose elements are discussed in the following sections.

### **4.1 Modeling Frameworks and Standards for IEM Software Design and Implementation**

Conventional environmental modeling systems include science models, user interfaces, data analysis and visualization tools (including GIS), and calibration and optimization tools. Within this ecosystem of software tools required to perform IEM, there is a strong need to provide interoperability between tools to simplify and automate data transfer across applications. Not only is interoperability required across the tools used for environmental modeling, but at a deeper level interoperability is required between the individual science models used to address specific environmental concerns. It is this interoperability – between individual science models used in IEM – that has attracted much of the attention within the community because of the inherent challenges of properly translating and transferring knowledge between multiple science domains.



**Figure 6: IEM Technology Roadmap**

Interoperability in this sense means the ability of different information technology components, systems, and software applications to communicate and exchange data accurately, effectively, and consistently, and to use the information that has been exchanged (Heubusch, 2006; IEEE, 1989). Thus, focusing on individual science models, the interoperability challenge is to enable communication and exchange of data between two scientific models that may be from different scientific domains. This problem is multifaceted, and we discussed the issues of coherence, complexity, semantics, and ontologies related to model integration as scientific goals for IEM in Section 2. Therefore in this section we focus the discussion on technological issues in achieving interoperability between scientific models.

Mattot et al. (2009) note several software technology-based barriers to interoperability, such as different programming languages, compilers, and development platforms; inconsistent separation of system and model components (e.g., user and model interface code, executables, algorithmic code, execution management code, warning and error handling, and statistical functionality); and different input/output (I/O) file formats. Collectively these heterogeneities complicate the

process of IEM because they limit the number and variety of tools available for integrated modeling and assessment. As a result, small communities have evolved, each with its own modeling framework and internal standards for integrating model components. Table 6 provides a list of some of the modeling frameworks that exist within the IEM community.

**Table 6 – A sampling of the modeling frameworks with connections to the IEM community.**

<b>Name</b>	<b>Brief Description</b>	<b>Reference(s)</b>
LHEM	Flexible landscape model structures, easily modified or extended for different goals.	Voinov et al., 2004
OMS	Provides the ability to construct models and applications from a set of components.	David, et al., 2002 and 2012; Ahuja, et al., 2005
MIMOSA	A model simulation platform for building conceptual models and running the simulations.	Müller, 2010
FRAMES	A modeling system that includes a collection of models as well as data retrieval and analysis tools.	Johnston et al., 2011; Babendreier and Castleton, 2005
SHEDS	A modeling system for simulating human activity patterns and related chemical exposures.	Zartarian et al., 2012
ARAMS	Used to estimate impacts and risks associated with military relevant compounds.	Dortch et al., 2007
GENII	For calculating radiation dose and risk from radionuclides released to the environment.	Napier, 2007
IWRMS	Integrates a collection of water resource models (watersheds, rivers, lakes, estuaries) to support decision makers.	Thurman et al., 2004
AMBER	Designed to explore the benefits of making scientific modelling tools available on the internet.	Quintessa, 2012
GoldSim	For dynamically modeling complex systems including but not limited to IEM systems.	GoldSim, 2012
GMS/WMS/SMS	Groundwater, watershed, and surface water modeling systems	Aquaveo, 2012
BASINS	Integrates modeling and assessment tools with national watershed data using a GIS	EPA, 2001
ESMF	For building climate and weather prediction models as interlinked components	Hill et al., 2004
CSDMS	Component-based modeling framework targeting the earth surface dynamics community	Peckham, 2010
SEAMLESS	Integrated framework for linking models, data, and indicators in support of environmental, economic and social analysis for agricultural systems	van Ittersum et al., 2008

HydroModeler	Integrated modeling environment plug-in to CUAHSI HydroDesktop application and built on OpenMI standard.	Castronova et al., 2012
ARIES	Tool for assessing and validating ecosystem services in decision-making.	ARIES, 2012
EvoLand/ENVISION	Regional planning and environmental assessment tool; spatially explicit and multi-agent based.	Bolte et al, 2006, <a href="http://envision.bioe.orst.edu/">http://envision.bioe.orst.edu/</a>

Many of the modeling frameworks listed in Table 6 have advanced over several years of development effort to become sophisticated tools. Many are also widely used tools within segments of the IEM community. The adoption of specific modeling frameworks within local communities is understandable and unlikely to change in the near future because maintaining local control over the user experience, in particular the design and implementation of the Graphical User Interface (GUI), is important for buy-in and effective use within specialized communities. The protocols and standards employed locally by individual frameworks to facilitate interoperability, while important within the framework itself, do not directly address the challenge of achieving interoperability across frameworks. This may be counterintuitive, but when one considers the vast variety of ways for achieving interoperability between models, it becomes reasonable that no two modeling frameworks have independently settled on the same standard for achieving interoperability. As stated earlier, this lack of cross-framework interoperability is a significant technical challenge facing the IEM community because, even though different frameworks may focus on different problem domains, the science (data, models, and methods) expressed within each framework is often the same. The frameworks themselves are therefore repetitive causing additional work in terms of code development and maintenance. But it is not only this additional work that is a cause for concern; more important is the fact that modeling frameworks, because they tend to focus on specific problem domains, do not always include the state-of-art scientific models for problem domains that are tangential to their own area of focus. For example, a groundwater model must include a way of modeling river hydraulics to provide a boundary condition to the subsurface environment, but this is not the primary focus of the groundwater model, so the tangential river hydraulics code is less likely to be kept up to date compared to the core groundwater code. Therefore the need for interoperability across frameworks is deep and far reaching and a solution to this problem would be a great benefit to the IEM vision.

Given these technical challenges, we believe a near-term goal of the IEM community should be to work on protocols and standards that are appropriate to be elevated to a level higher than individual frameworks, thus facilitating access to a much wider inventory of models and components. This challenge is gaining recognition and progress toward increased interoperability is occurring. Workshop participants agreed that, to date, groups involved in modeling framework development have “discovered by doing” that the technological issues described above are common across frameworks and that the required functionality can be abstracted and standardized at a higher level, i.e., a global standard. For example, it is clear that a core set of properties that each model within a modeling system must follow exists. These properties include a structure that enables the modeling system to initialize, execute (e.g., step through time and update state), retrieve and provide data to other models, and close the model on demand through a standardized Application Programming Interface (API). Models that can provide these interface functions are able to provide their caller with fine-grained control of their functionality, which is a key step to achieving interoperability across frameworks. In effect, this process of standardization is one of separating framework functionality from the science components contained within them, rendering the components framework independent. If well designed, the standardization process can be done in a way that minimizes potential negative impacts including placing unreasonable burdens on scientists or inhibiting creativity due to the need to adhere to onerous standards.

To move forward, the IEM community would be well served to look at examples of past work that offer more generic solutions for interoperability across modeling components. One example is the Common Component Architecture (Larson et al., 2004), which is a set of component and framework standards developed within high-performance, scientific computing. CCA-compliant components can be reused in any CCA-compliant framework (e.g., Ccaffeine<sup>6</sup>, XCAT<sup>7</sup>). CCA is used as the underlying architecture for modeling frameworks such as the CSDMS (Peckham et al, 2012). Another example is from the OpenMI<sup>8</sup> Association, which has proposed a global standard for exchanging data among linked models at run time (Moore and Tindall, 2005, Moore

---

<sup>6</sup> <http://www.cca-forum.org/software/index.html>

<sup>7</sup> <http://grid.cs.binghamton.edu/projects/xcat.html>

<sup>8</sup> <http://www.openmi.org/>

et al., 2005). The OpenMI standard has been the subject of many recent studies and movement of existing frameworks to accommodate the standard is occurring (Fotopoulos et al., 2010; Castronova and Goodall, 2010; Elag et al., 2011; Betrie et al., 2011; Janssen et al., 2011; Bulatewicz et al., 2010; Ewert et al., 2009; Reussner et al., 2009).

On a more general level, the challenge of interoperability present in IEM is similar to interoperability issues addressed by the World Wide Web, which would not be possible without broad agreement on standards for data and information (knowledge) storage and exchange (e.g., HTTP, HTML, etc.). The World Wide Web Consortium<sup>9</sup> (W3C) and the Open Geospatial Consortium<sup>10</sup> (OGC) are international consortia involving companies, government agencies and universities, committed to a consensus process for development of standards that empower development of a vast array of applications. The W3C pursues open standards related to every aspect of the web, from its basic architecture to the provision of data and information storage and access services, to enabling web functionality on all manner of devices. One path forward for IEM is to embrace and build from standards and technologies for representing structured data and the Semantic Web technologies for representing knowledge and linking information sources (e.g., RDF, SPARQL, OWL, and SKOS). The OGC focuses on standards that facilitate access to and use of spatial information and related services (e.g., WFS, WPS, WCS, SOS, WNS), as will be discussed further in Section 4.2. Other standards relevant to IEM include the development of several science domain markup languages based on XML, including the GeographyML<sup>11</sup>, the Earth ScienceML<sup>12</sup>, the WaterML<sup>13</sup>, the NetCDFML<sup>14</sup>, and the Systems BiologyML<sup>15</sup>. Examples of ontology applications based on OWL include the Semantic Web for Earth and Environmental Terminology<sup>16</sup> (SWEET), the Environment Ontology<sup>17</sup> (EnvO), and the Exposure

---

<sup>9</sup> <http://www.w3.org/>

<sup>10</sup> <http://www.opengeospatial.org/>

<sup>11</sup> <http://www.opengeospatial.org/standards/gml/>

<sup>12</sup> <http://esml.itsc.uah.edu/index.jsp>

<sup>13</sup> <http://www.opengeospatial.org/projects/groups/waterml2.0swg>

<sup>14</sup> <http://www.unidata.ucar.edu/software/netcdf/ncml/>

<sup>15</sup> [http://sbml.org/Main\\_Page](http://sbml.org/Main_Page)

<sup>16</sup> <http://sweet.jpl.nasa.gov/ontology/>, E

<sup>17</sup> <http://environmentontology.org/>

Ontology<sup>18</sup> (ExO). Each of these applications focuses on a particular science domain. The challenge for the IEM community is to bring these concepts and standards to bear on IEM systems in an effort to establish a unifying publishing capability for software that facilitates discovery and utilization of individual IEM components and systems independent of the source of their development.

#### **4.2 Leveraging the World Wide Web for IEM**

A second theme that emerged from the workshops concerns the leveraging of the World Wide Web for building next generation IEM modeling systems. Clear momentum exists in the broader information technology domain toward storing data and tools in the Cloud. Much work has been done in IEM communities to create Web-based analysis tools and portals (e.g., Booth et al., 2011), expose large databases as web services (e.g., Goodall et al., 2008), and for creating workflows to coordinate data flow between databases, analysis tools, and models (e.g., Granell et al., 2010, Kepler, 2012). Recent work has focused on service-oriented and resource-oriented paradigms for organizing model software architectures suggesting that model frameworks themselves could be integrating computational and data resources that are distributed across the Web (Goodall et al., 2011, Nativi et al., 2012, Granell et al., 2012). Commercial investment in cloud-based computing resources, which allows users to rent computing resources, opens new doors for dynamically-scaling compute intensive tasks or web applications with temporarily high demands, as discussed later in this section. Collectively, these Web-based initiatives offer potentially transformative changes to the technological approaches available to the IEM community, but much work is needed to understand how to effectively and efficiently leverage these approaches for specific applications within IEM.

A key challenge to the IEM community for achieving the full potential of the web is to advance our understanding of how to optimize data and operations between traditional personal computer (PC) environments and remote computers on the Web. This is because, while the Web is a promising tool that could be better leveraged in IEM applications, there remain issues that must be addressed. For example, IEM applications often require the use of large volumes of data, and moving these datasets effectively and efficiently over the Web is challenging. Second, in some

---

<sup>18</sup> <http://obofoundry.org/cgi-bin/detail.cgi?id=exo>



cases IEM workflows may require dynamic and complex interaction between components of the workflow. An example might be coupled model components within a workflow that have a time-step dependent feedback loop for data exchanges. The challenge facing the IEM community is how to allow for such functionality while still maintaining sufficient reliability and serviceability of the IEM software systems.

Moving forward, the community should be aware of the different ways in which the Web can be leveraged when building IEM software systems. In one scenario, the entire IEM solution might be hosted on a single web server and the user would then interact with the application through a Web browser. This is the typical solution and has been widely leveraged for providing data, visualization tools, and basic analysis tools in the IEM community. A second scenario is for the IEM solution to be a Desktop application that has built-in capabilities for leveraging remote data or processing resources directly through the Desktop application itself. In this case, the remote resources would ideally be made available to the Desktop application as web services using a public and well described API. An example of this approach is the CUAHSI HydroDesktop application that provides access to remote data archives made available using the CUAHSI WaterOneFlow web service (Ames et al., 2012; Tarboton et al, 2009). In HydroDesktop, the functionality for both searching and downloading data is executed on remote servers that have their own databases. The software architecture involves a network of servers, with each server having its own database and software stack that allow it to be a node within the network (Horsburgh et al., 2009; Horsburgh et al., 2011). The user executes data search and download tools directly from the HydroDesktop application instead of through a Web browser. Because the web services remote servers have been built using a standardized API, it is possible to ingest data from any server that adopts the API into a local database on the machine running HydroDesktop. This local data is then available for performing data analysis, visualization, and modeling activities.

This approach is in the spirit of 'Cloud Computing', although recent investment by the public and private sectors has grown the Cloud computing concept into a powerful new paradigm for building Web systems. A key idea of the cloud computing concept is that a user can rent computer resources (processing, storage, software) from a vender rather than buying and

maintaining their own computing resources. Commercial-based cloud services are offered from a range of providers, e.g., Amazon, Google, and Rackspace. The advantage is that a user has access to a theoretically unlimited amount of computing resources to accomplish a task. Therefore applications can more dynamically scale as more or less resources are needed over time.

Governmental agencies have begun exploring cloud-computing and offering tools as Web resources made available through the Cloud. The British Geological Survey has initiated the Environmental Virtual Laboratory<sup>19</sup> project and is exploring the provisioning of data services, web-enabled environmental models, and a suite of on-line local community tools in the spirit of the Cloud paradigm of software as a service. The US Department of Agriculture Natural Resources Conservation Service is developing the Cloud Services Innovation Platform<sup>20</sup> to offer data and modeling services for use in the field, and the US Environmental Protection Agency has developed the WATERS<sup>21</sup> program that provides services that perform various data services and related analyses like watershed delineation. These applications suggest a certain momentum in the community toward moving more of the tasks needed to support IEM, such as running environmental simulation models or large databases, to remote computer servers on the Cloud rather than on PCs.

The approach of using cloud computing and web services has several advantages over traditional modeling approaches, including the potential to greatly reduce the cost and time required for the development of an IEM solution through the re-use of modeling components. Each component in the modeling chain maintained can be rapidly distributed to the community and sharing of services can be a catalyst for building a stronger integrated environmental modeling community. Furthermore, the process of designing services would break down the different aspects of environmental modeling into a set of interoperable services that can be dynamically configured to create custom solutions to environmental problems. Another advantage is that moving resource intensive tasks to servers opens the possibility of performing sophisticated IEM

---

<sup>19</sup> <http://www.evo-uk.org/>

<sup>20</sup> <http://www.eucalyptus.com/sites/all/files/cs-usda.en.pdf>

<sup>21</sup> <http://www.epa.gov/waters/geoservices/index.html>

operations on mobile devices as well. Such tools could have large benefit in engaging stakeholders, and for this reason the US Environmental Protection Agency issued a challenge for the public to develop environmental applications for mobile devices<sup>22</sup> and the British Geological Survey has developed the iGeology application that combines GPS functionality with informational databases related to geology across Britain.

Despite access to these new tools and resources available in the Web-domain, the fundamental challenge of establishing common standards for data and modeling services outlined in Section 2.1 (science content) and 4.1 (technology) are only amplified as one attempts to capture the potential of the web for providing interoperability across a wide community of end users. The IEM community would be well served by identifying how existing science and technology standards can be leveraged, integrated, and extended to serve the broader needs and interests of IEM. As stated several times in this paper these standards must be guided through an approval process that includes sufficient representation from the community. Without such effort, the IEM tools built for the Web will suffer from the same interoperability challenges faced by modeling frameworks built for Desktop environments.

## **5.0 IEM Community**

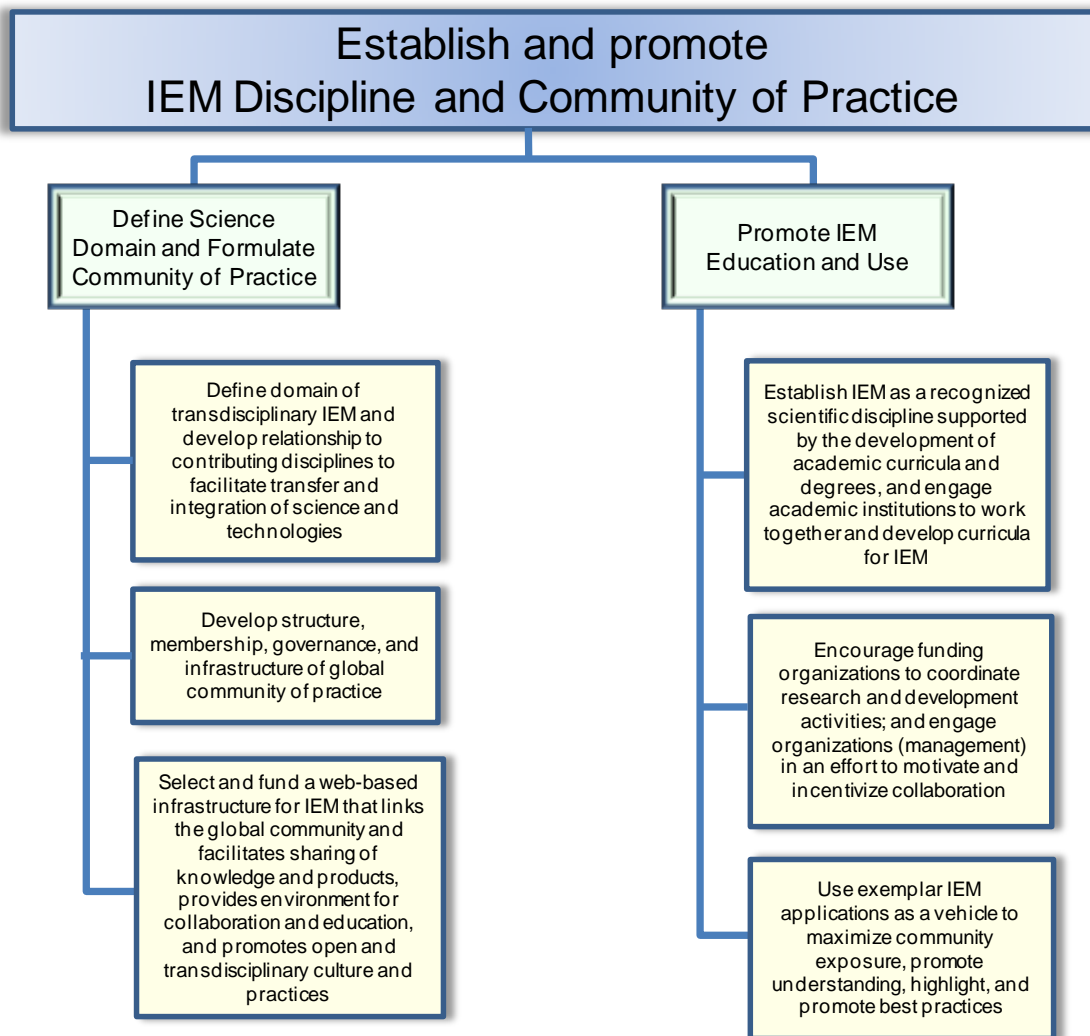
In many fields and sectors, openness, collaboration, sharing, and social learning have been shown to drive innovation and growth (Tapscott and Williams, 2006). These behavioral attitudes and characteristics are often expressed through formal communities of practice (Lave and Wagner, 1991). Structured community processes can reduce duplication of efforts and increase leveraging of resources and overall efficiency. IEM is transdisciplinary and, as such, involves a “community”. The members of the community include the full array of decision and science stakeholders described earlier. During the workshops, discussions of community focused on establishing and promoting a community of practice, IEM education, and a web-based community center. The resulting roadmap of IEM community activities is presented in Figure 7 with related workshop discussions of the specific topics in the following sections.

### **5.1 Communities of Practice**

---

<sup>22</sup> <http://www.epa.gov/appsfortheenvironment/>

The early phases of IEM development were conducted by disparate groups working on science and applications (e.g., EPA, 1992; Onishi et al., 1985; Whelan and Nicholson, 2002; Whelan et al., 1986; Yu et al., 1993), mostly independent of one another. Results of these efforts were disseminated through traditional outlets, such as conference presentations, technical reports, journal articles, and websites. These groups advanced the science and application of IEM, but their efforts and products typically were neither coordinated nor compatible. The challenge is to foster and promote participation in a coordinated manner across the full community, which is often easier said than done (Voinov and Bousquet, 2010).



**Figure 7: IEM Community Roadmap**

In recent years, a community of practice approach has emerged as a paradigm within IEM. Several formal groups relevant to the IEM community have formed. Table 7 lists several of these groups and describes the focus and scope of their activities. These groups have formed around particular IEM sub-domains, such as multimedia modeling, surface dynamics models, earth systems modeling, and hydrology. Operationally, these groups act as communities of practice growing their knowledge base and developing solutions to common problems together.

More recently, communities have begun to form at levels higher than the sub-domain. For example, the U.S. National Science Foundation's EarthCube<sup>23</sup> initiative aims to support the development of community-guided cyber infrastructure to integrate data and information for knowledge management across the geosciences by fostering community collaboration. In this initiative, community groups, consortia, researchers, and educators share ideas, introduce concepts, and find and develop collaborative efforts focused on solving issues common to all. The International Environmental Modelling and Software Society (iEMSs) was formed to develop and use environmental modelling and software tools to advance the science and improve decision making, □promote contacts among physical, social and natural scientists, economists and software developers from different countries, □improve the cooperation between the sciences and decision makers/advisors on environmental matters, and □exchange information in the field of environmental modelling and software among scientific and educational organizations and private enterprises. iEMSs sponsors a biennial conference and focuses attention on several areas of importance to IEM. Another approach to addressing broader participation is being pursued by the Community of Practice for Integrated Environmental Modeling (CIEM). CIEM has formed as a community of communities with several goals in mind including formalization of the discipline of IEM, linking of the growing number of sub-domain communities, and development and promotion of best practices and standards at the global scale. As part of its strategy, CIEM has developed the iemHUB<sup>24</sup> web portal to 1) enhance IEM learning and education (establish best practices and produce and share educational tools), 2) leverage IEM solutions (make them accessible and reusable), 3) facilitate scientific collaboration, and 4) allow efficient use of resources (limit duplication in technology

---

<sup>23</sup> <http://earthcube.ning.com/page/intro>

<sup>24</sup> <http://www.iemHUB.org>

development). Engaging this level of community has proven to be quite challenging. Organizations or groups have a mission, which defines its work, needs, and priorities. There are many fundamental differences in the types of inter- or intra-organizational responsibilities, including regulatory/enforcement, resource management, scientific research/monitoring, education and outreach, issue advocacy, community engagement, commercial or private sector development, etc. Even when there is a joint interest among several organizations or groups (e.g., working together to develop or apply an IEM), differences in priorities or alignment of perspectives can create barriers to effective collaborations. Organizations can be the greatest facilitators or barriers to a community of practice approach. For the IEM community of communities concept to be successful, organizations must come to terms with the need to collaborate in a joint effort to develop and promote the best practices and standards that will enable efficient sharing of the myriad of valuable IEM science products being produced.

**Table 7. IEM Relevant Communities or Communities of Practice.**

Name	Scope
ISCMEM <sup>1</sup>	Formal effort of modeling groups at nine U.S. federal agencies to share ideas, models, and projects.
CSDMS <sup>2</sup>	Convenes experts to facilitate development and dissemination of integrated software modules that simulate dynamics of the earth's surface, focusing on the interface between lithosphere, hydrosphere, cryosphere, and atmosphere
ESMF <sup>3</sup>	Produces shareable software for climate, weather, and related applications by building high-performance, flexible infrastructure that increases ease of use, performance portability, interoperability, and reuse in climate, numerical weather prediction, data assimilation, and other earth science applications.
OpenMI <sup>4</sup>	Community of organizations that has proposed a standard for exchanging data between environmental models.
CUAHSI <sup>5</sup>	Community that facilitates discovery and access to hydrologic data (Hydrologic Information System, HIS), sharing of hydrologic models and codes (Community Hydrologic Modeling Platform, CHyMP), and a web portal for interactive access to widely used simulation codes and high performance computing (HydroHub).

<sup>1</sup>ISCMEM: Interagency Steering Committee for Multi-media Environmental Modeling (<http://iemhub.org/topics/ISCMEM>)

<sup>2</sup>CSDMS: Community Surface Dynamics Modeling System ([http://csdms.colorado.edu/wiki/Main\\_Page](http://csdms.colorado.edu/wiki/Main_Page))

<sup>3</sup>ESMF: Earth System Modeling Framework (<http://www.earthsystemmodeling.org/index.shtml>)

<sup>4</sup>OpenMI: Open Modeling Interface (Association) (<http://www.openmi.org/>)

<sup>5</sup>CUAHSI: Consortium of Universities for the Advancement of Hydrologic Science, Inc. (<http://www.cuahsi.org/>)

## 5.2 IEM Education and Use

Workshop participants consistently expressed the need for a specific focus on education. To promote and improve IEM within the stakeholder community, a symbiotic relationship needs to exist between academic, government, non-government institutions and the general public. Academic institutions train the next generation of scientists and engineers, so developing an appreciation of and skill sets that deal with multi-dimensional problems, allows for a more holistic and systematic understanding. Academic curricula could be designed that not only develops IEM science and tools (e.g., modeling frameworks) but are also structured to clearly articulate how the various disciplines can connect and contribute to transdisciplinary solutions or approaches. The subject of IEM is beginning to see inroads within academic institutions (Ramaswami et al., 2005), especially those associated with civil, environmental, and computer engineering.

Workshop participants also supported the idea of identifying exemplar applications of IEM and utilizing them as a vehicle for education and to promote best practices.

## **7.0 Summary**

From discussions held during a series of workshops and the literature review performed for this paper, it is clear that integrated environmental modeling (IEM) represents a critically important approach for providing science-based information to environmental decision makers and policy developers. It is also clear that there is significant ongoing effort from many groups across the world to address the issues and challenges related to IEM. These efforts collectively represent a natural progression of the science and application of IEM. In this paper, we have stepped back and taken a holistic view of IEM, its role in decision making, its elemental parts, the manner in which it is currently practiced, and the issues and challenges that remain to be addressed. With the perspective afforded from this view, we present a roadmap to provide direction and context for the continued advancement of IEM.

IEM provides a science-based structure to assimilate and organize multidisciplinary knowledge. It provides a means to apply this knowledge to explain, explore, and forecast environmental-system response to natural and human-induced stressors. Its structure serves as a unifying vehicle of communication among stakeholders holding diverse perspectives, values, and priorities. It

serves the decision makers' needs to understand the dynamic workings of systems involving social, economic, and environmental components, compare impacts among decision scenarios, analyze trade-offs among options, ask "What if?" questions, avoid the creation or transfer of problems in pursuing solutions to the problem at hand, adapt strategies based on ongoing monitoring of the system, and respond to unintended consequences.

In all of the workshop discussions leading up to the roadmap presented in this paper, there were several omnipresent themes that related to how we think about complex problems and how we should conduct the science and application of IEM. These are not new ideas; most have been part of the modeling conversation and literature for quite some time. The intent of sharing them here is to state that they remain not only relevant but critically important to the future value and acceptance of IEM. They should be explicitly considered and applied to IEM activities articulated in the roadmap. They are:

- *Systems Thinking*: Intrinsic to solutions of complex problems is the idea that an appropriate decision (i.e., one that is science-based, cost effective, socially responsible, adaptive, and sustainable) requires a systems framework and approach. All activities should reflect awareness of the larger system into which they fit.
- *Stakeholder Involvement*: Ensuring appropriate stakeholder participation, assimilating the range of stakeholder perspectives, contributions and needs, and developing a consensus understanding of the problem, decision goals, conceptualized system, and solutions must be viewed as an essential ingredient for the conduct of IEM from individual components to complete decision support systems and applications.
- *Community Development*: Sponsoring, nurturing, and participating in a global community that transcends individual groups and organizations will facilitate learning, sharing (knowledge and tools), and communication.
- *Openness*: Openness is a combination of transparency, cooperation, and collaboration. Openly sharing the products of individual research and development efforts will allow a wider access to and enable innovation with respect to IEM science, technology, and applications.



- *Reusable products:* Community wide acceptance and use of globally recognized best practices and standards in the design and implementation of software-based science products is fundamental to long term IEM value and acceptance.
- *Investment:* Virtually any effort to develop a portion of an IEM solution for a problem has value beyond its original need. To realize this value (e.g., make it available to the larger community) requires an investment beyond that necessary for the problem at hand. This investment must be shared among those organizations that sponsor and fund IEM.

In developing the IEM roadmap, we organized the discipline of IEM as a landscape containing a set of interdependent elements including applications, science, technology, and community. IEM applications are the stakeholder community's methods for selecting, organizing, integrating, and processing the combination of environmental, social, and economic information needed to inform decisions and policies related to the environment. The science of IEM provides the knowledge and integrative strategies that support and serve applications and related decisions. Technology represents the primary means by which the science of IEM is expressed and applied. Integrated modeling systems are constructed and executed on a variety of platforms serving research, applications, and education. Community reflects the fundamental nature of modern complex problems (i.e., problems affect communities and are solved by communities). In an equally important way, the community of IEM practitioners plays a fundamental role in the research and development of IEM science and technology. The roadmap presented in this paper is organized by IEM landscape element and includes a series of activities that represent a holistic approach to addressing the issues and challenges discussed throughout the workshops and summarized in this paper. Here we summarize the major activity areas for each element, whose details are captured in Figures 2, 3, 6, and 7.

**IEM Applications:** The roadmap related to IEM applications focuses on three principal activity areas. First, with respect to stakeholder involvement, roadmap activities include further development of methods and guidelines for elucidation and integration of diverse knowledge bases, perspectives, values, and priorities. Secondly, activities are focused on the use of IEM in a fully adaptive decision and policy formulation context. And finally, activities are focused on the

identification and promotion of best practices, the use of applications as a tool for education, and the ability to reuse applications.

**IEM Science:** The roadmap related to IEM science focuses on four principal activity areas. The first area involves developing awareness and guidelines related to holistic systems thinking and the design of integrated modeling systems for coherence and complexity. A second area of activity includes advancing the design of data monitoring studies to reflect the needs of IEM for cross-disciplinary data for model setup and evaluation. In the area of model evaluation, activities include the development of systems-levels methods for calibration and sensitivity and uncertainty characterization. Finally, peer review of complex IEM systems and their applications require attention.

**IEM Technology:** There are three principal areas of activity for IEM technology. First, activities are included that focus on the development of protocols and standards for software design and implementation for reuse and interoperability. Secondly, activities are included that focus on building tools to enable automated discovery and utilization of IEM components and systems. The final technology activity area focuses on methods for further exploiting the World Wide Web and related technologies.

**IEM Community:** A principal activity related to IEM community includes the articulation of the IEM science domain and its relationship to contributing disciplines. Additional activities include further developing and energizing a global community of practice for IEM, establishing IEM as a formal academic discipline, and encouraging funding organizations to coordinate funding efforts related to IEM.

Finally, discussions have recently begun concerning the implementation of this roadmap and activities. A key aspect of the implementation is that solutions to common issues and challenges reflect community-wide participation and acceptance. As such, implementation of the roadmap faces several challenges, principle among them is the need to transcend individual problem needs and organizational mandates and pursue solutions to core issues and challenges of IEM (i.e., the

roadmap), as a well connected, cooperative, and collaborative global community. We encourage all IEM practitioners and stakeholders to contribute to this global awareness and effort.

## **Disclaimer**

The views expressed in this paper are those of the authors and do not necessarily reflect the views or policies of the affiliated organizations. The use of trade, product, or firm names is for descriptive purposes only and does not imply endorsement by the U.S. Government. This manuscript is published with the permission of the Executive Director of the British Geological Survey (Natural Environmental Research Council).

## **Acknowledgements**

We wish to acknowledge the contribution to the numerous workshop participants who shared their knowledge and perspective concerning IEM. The research described in this paper was in part carried out at the Jet Propulsion Laboratory, California Institute of Technology, under contract with the National Aeronautics and Space Administration.

## References

- ABARE-BRS (Australian Bureau of Agricultural and Resource Economics – Bureau of Rural Sciences), 2010. Assessing the regional impact of the Murray–Darling Basin Plan and the Australian Government’s Water for the Future Program in the Murray–Darling Basin. ABARE–BRS Project 43051. Commonwealth of Australia. Canberra, ACT, Australia.
- Akbar, M., Aliabadi, S., Patel, R., Marvin, W., 2011. Fully Automated and Integrated Multi-Scale Forecasting Scheme for Emergency Preparedness. *Environ. Model. Software (this issue)*.
- Ahuja, L.R., Ascough II, J.C., David, O., 2005. Developing natural resource models using the object modeling system: feasibility and challenges. *Adv. Geosci.* 4, 29–36.
- Ames, D.P., Horsburgh, J.S., Cao, Y., Kadlec, J., Whiteaker, T., Valentine, D., 2012. HydroDesktop: Web services-based software for hydrologic data discovery, download, visualization, and analysis. *Environmental Modelling & Software.* 37, 146–156.
- Aquaveo. 2012. Water Modeling Solutions, Aquaveo, Provo, UT (<http://www.aquaveo.com/>, last accessed June 8, 2012)
- ARIES. 2012. Artificial Intelligence for Ecosystem Services (ARIES): ARIES white paper. (last accessed June 8, 2012, <http://esd.uvm.edu/uploads/media/ARIES.pdf>).
- Arnold, T.R., 2012. Procedural knowledge for integrated modelling: Towards the Modelling Playground, *Environmental Modelling & Software*, Available online 26 May 2012. DOI: [10.1016/j.envsoft.2012.04.015](https://doi.org/10.1016/j.envsoft.2012.04.015)
- Ascough II, J.C., Maier, H.R., Ravalico, J.K., Strudley, M.W., 2008. Future research challenges for incorporation of uncertainty in environmental and ecological decision-making. *Ecological Modelling* 219, 383-399.
- Aster, R.C., Borchers, B., Thurber, C. H., 2005. *Parameter Estimation and Inverse Problems*. Amsterdam, Elsevier Academic Press.
- Babendreier, J. E., Castleton, K. J., 2005. Investigating uncertainty and sensitivity in integrated, multimedia environmental models: tools for FRAMES-3MRA. *Environ. Model. Software* 20 (8), 1043-1055.
- Bailey, G.W., Mulkey, L.A., Swank, R.R., 1985. Environmental Implications of Conservation Tillage: A System Approach, in: D’Itri, F.M. (Ed.), *A System Approach to Conservation Tillage*. Lewis Publishers, Inc., Chelsea, MI pp. 239-265.

- Bastin, L., Cornford, D., Richard, J.M., Heuvelink, G.B., Pebesma, E., Stasch, C., Nativi, S., Mazetti, P., Williams, M., 2012. Managing Uncertainty in Integrated Environmental Modelling: The UncertWeb Framework. *Environmental Modelling & Software*. (this issue).
- Beran B., Piasecki M., (2009), Engineering New Paths to Hydrologic Data, *Computers and GeoSciences*, 35(4): 753-760, April 2009, Elsevier, doi:10.1016/j.cageo.2008.02.017.
- Betrie, G.D., van Griensven, A., Mohamed, Y.A., Popescu, I., Mynett, A.E., Hummel, S. 2011. Linking SWAT and SOBEK using open modeling interface (OpenMI) for sediment transport simulation in the Blue Nile River Basin. *Transactions of the ASABE*. 54(5): 1749-1757.
- Beven, K., 2007. Towards integrated environmental models of everywhere: uncertainty, data and modelling as a learning process. *Hydrol. Earth Syst. Sci.* 11 (1), 460-467.
- Beven, K., 2009. *Environmental Modelling: An Uncertain Future?* Taylor & Francis, London, UK.
- Blind, M.W., Moore, R.V., Scholten, H.M., Refsgaard, J.C., Borowski, I., Giupponi, C., Estrela, M. and Vanrolleghem, P.A., 2005a. Current results of the EC-sponsored catchment modelling (CatchMod) cluster: Part 1: "Cross-cutting issues", IWA 2005 Watershed & River Basin Management Specialist Group Conference, Calgary, Alberta, Canada.
- Blind, M.W., Borgvang, S.A., George, D.G., Froebrich, J., Zsuffa, I., Vanrolleghem, P., Jørgensen, L.F. & de Lange, W.J., 2005b. Current results of the EC-sponsored catchment modelling (CatchMod) cluster: Part 2: "Water topics and synthesis" IWA 2005 Watershed & River Basin Management Specialist Group Conference, Calgary, Alberta, Canada.
- Bolte, J.P., Hulse, D.W., Gregory, S.V., Smith, C., 2006. Modeling biocomplexity - actors, landscapes and alternative futures. *Environ. Model. Software* 22, 570-579.
- Booth, N.L., Everman, E.J., I-Lin, K., Sprague, L., Murphy, L., 2011. A Web-based decision support system for assessing regional water-quality conditions and management actions. *Journal of the American Water Resources Association*. 47 (5), 1136-1150.
- Bormann, B.T., Cunningham, P.G., Brookes, M.H., Manning, V.W., Collopy, M.W. 1994. Adaptive ecosystem management in the Pacific Northwest. Gen. Tech. Rep. PNW-GTR-341. Portland, OR: U.S. Department of Agriculture, Forest Service, Pacific Northwest Research Station. 22p.
- Boumans, R., Costanza, R., Farley, J., Wilson, M.A., Portela, R., Rotmans, J., Villa, F., Grasso, M., 2002. Modeling the dynamics of the integrated earth system and the value of global ecosystem services using the GUMBO model. Special Issue: The Dynamics and Value of Ecosystem Services: Integrating Economic and Ecological Perspectives. *Ecol. Econ.* 41, 529-560.

- Bulatewicz T.; Yang X.; Peterson J. M., Staggenborg, S., Welch, S.M., Steward, D.R., 2010. Accessible integration of agriculture, groundwater, and economic models using the Open Modeling Interface (OpenMI): methodology and initial results. *Hydrology and Earth System Sciences*. 14 (3), 521-534.
- Castronova, A.M., Goodall, J.L., 2010. A generic approach for developing process-level hydrologic modeling components. *Environmental Modelling & Software*. 25 (7), 819–825.
- Castronova, A.M., Goodall, J.L., Ercan, M.B., 2012. Integrated modeling within a Hydrologic Information System: An OpenMI based approach, *Environmental Modelling & Software*, Available online March 9, 2012 <http://dx.doi.org/10.1016/j.envsoft.2012.02.011>.
- Clark, M.P., Kavetski, D., Fenicia, F., 2011. Pursuing the method of multiple working hypotheses for hydrological modeling. *Water Resour. Res.* 47, W09301.
- CMP, Conservation Measures Partners, 2007. Open Standards for the Practice of Conservation. <http://www.conservationmeasures.org> (last accessed July 9, 2012).
- Cohen, Y., 1986. *Pollutants in a Multimedia Environment*. Plenum Press, New York.
- Costanza, R., A. Voinov, R. Boumans, T. Maxwell, F. Villa, H. Voinov and Wainger, L. 2002. Integrated ecological economic modeling of the Patuxent river watershed, Maryland. *Ecological Monographs*, 72 (2), pp.203-231.
- Daniels, M., 1999. *Integrating Simulation Technologies with Swarm, Agent Simulation: Applications, Models and Tools Conference*. University of Chicago.
- David, O., Markstrom, S.L., Rojas, K.W., Ahuja, L.R., Schneider, W., 2002. The object modeling system, in: Ahuja, L.R., Ma, L., Howell, T.A. (Eds.), *Agricultural System Models in Field Research and Technology Transfer*. Lewis Publishers, Boca Raton, FL, USA, pp. 317-344.
- David, O., Ascough II, J.C., Lloyd, W., Green, T.R., Rojas, K.W., Leavesley, G.H., Ahuja, L.R. 2012. A software engineering perspective on environmental modeling framework design: The Object Modeling System. *Environmental Modelling & Software*, Available online 13 June 2012 (this issue).
- Delsman, J., Kukuric, N., Veldhuizen, A., Tiktak, A., Kroon, T., 2009. Netherlands Hydrological Modeling Instrument - Coupling groundwater and surface water for national policy analysis. In: IAHS-IAH Conference Hyderabad, 7 September 2009
- Dortch, M.S., S. Fant, and J.A. Gerald. 2007. "Modeling Fate of RDX at Demolition Area 2 of the Massachusetts Military Reservation," *J. of Soil and Sediment Contamination*, 16(6), 617-635.

- Elag M. M., Goodall, J. L., Castronova, A. M. 2011. Feedback loops and temporal misalignment in component-based hydrologic modeling. *Water Resources Research*. 47, W12520.
- Ellarby, M.J., Kite, S.S., 2006. Are Rich Visual Environments a Gimmick or a Real Aid in the Understanding and Acceptance of Simulation Models and Results, in: Robinson, S., Taylor, S., Brailsford, S., Garnett, J. (Eds.), *Proceedings of the 2006 Operations Research Society Simulation Workshop*. Leamington Spa, UK, March 28-29, 2006, pp. 295-299.
- EPA. 1992. MMSOILS: Multimedia Contaminant Fate, Transport, and Exposure Model. Documentation and User's Manual, EPA-600-X-92\_148. U.S. Environmental Protection Agency, Office of Research and Development, Washington, D.C.
- EPA (US Environmental Protection Agency). 2000. *Toward Integrated Environmental Decision-making*. EPA-SAB-EC-00-011. Washington, DC. Science Advisory Board.  
<http://www.epa.gov/sab/pdf/ecirp011.pdf>
- EPA. 2001. *Better Assessment Science Integrating Point and Nonpoint Sources, BASINS 3.0, User's Manual*, EPA-823-B01-001, U.S. Environmental Protection Agency, Washington, DC., 343 pp.
- EPA (US Environmental Protection Agency), 2007. *Workshop Report: Integrated Modeling for Integrated Environmental Decision Making Workshop*. January 30–February 1, 2007. Research Triangle Park, NC [http://www.epa.gov/crem/crem\\_integmodelwkshp.html](http://www.epa.gov/crem/crem_integmodelwkshp.html)
- EPA (US Environmental Protection Agency), 2008a. *Workshop Report: Collaborative Approaches to Integrated Modeling: Better Integration for Better Decision-Making*. December 10–12, 2008. Phoenix, AZ <http://www.epa.gov/crem/integrated-modeling-workshop2008.html>
- EPA (US Environmental Protection Agency), 2008b. *Integrated Modeling for Integrated Environmental Decision Making*. EPA-100-R-08-010. Washington, DC. Office of the Science Advisor.  
[http://www.epa.gov/CREM/library/IM4IEDM\\_White\\_Paper\\_Final\\_\(EPA100R08010\).pdf](http://www.epa.gov/CREM/library/IM4IEDM_White_Paper_Final_(EPA100R08010).pdf)
- EPA (US Environmental Protection Agency). 2009. *Guidance on the Development, Evaluation, and Application of Environmental Models*. EPA/100/K-09/003. Washington, DC. Office of the Science Advisor. [http://www.epa.gov/CREM/library/cred\\_guidance\\_0309.pdf](http://www.epa.gov/CREM/library/cred_guidance_0309.pdf)
- European Commission, 2000, *Directive of the European Parliament and of the Council 2000/60/EC Establishing a Framework for Community Action in the Field of Water Policy*, Official Journal 2000 L 327/1, European Commission, 73pp., Brussels, Belgium.
- Ewert, F., van Ittersum, M.K., Bezlepkina, I., Therond, O., Andersen, E., Belhouchette, H., Bockstaller, C., Brouwer, F., Heckeley, T., Janssen, S., Knapen, R., Kuiper, M., Louhichi, K., Olsson, J.A., Turpin, N., Wery, J., Wien, J.E. and Wolf, J. 2009. A methodology for

- enhanced flexibility of integrated assessment in agriculture, *Environmental science & policy*, 12, pp. 546-561.
- Farber, S., Costanza, R., Childers, D.L., Erickson, J., Gross, K., Grove, M., Hopkinson, C.S., Kahn, J., Pincetl, S., Troy, A., Warren, P., Wilson, M., 2006. Linking Ecology and Economics for Ecosystem Management. *BioScience* 56 (2), 117-129.
- Fenner, K., Scheringer, M., MacLeod, M., Matthies, M., McKoone, T.E., Stroebe, M., Beyer, A., Bonnell, M., Le Gall, A.-C., Klasmeier, J., Mackay, D., van de Meent, D.W., Pennington, D., Scharenberg, B., Suzuki, N., Wania, F., 2005. Comparing Estimates of Persistence and Long-Range Transport Potential among Multimedia Models. *Environ. Sci. Technol.* 39 (7), 1932-1942.
- Fischenich, J.C. 2008. The Application of Conceptual Models to Ecosystem Restoration. U.S. Army Corps of Engineers. ERDC/EBA TN-08-1. ERDC Environmental Laboratory, Vicksburg, MS.
- Fotopoulos, F., Makropoulos, C., Mimikou, M.A., 2010. Flood forecasting in transboundary catchments using the Open Modeling Interface. *Environmental Modelling & Software*. 25 (12), 1640–1649.
- GoldSim. 2012. GoldSim (<http://www.goldsim.com/>, last accessed June 8, 2012).
- Goodall, J.L., Horsburgh, J. S., Whiteaker, T.L., Maidment, D.R., Zaslavsky, I., 2008. A first approach to web services for the National Water Information System, *Environmental Modeling & Software*, 23(4): 404-411, doi:10.1016/j.envsoft.2007.01.005.
- Goodall, J.L., Robinson, B.F., Castronova, A.M., 2011. Modeling water resource systems using a service-oriented computing paradigm. *Environmental Modelling & Software*. 26, (5), 573–582.
- Granell, C., Diaz, L., Gould, M., 2010. Service-oriented applications for environmental models: Reusable geospatial services. *Environmental Modelling & Software*. 25 (2) 182-198.
- Granell, C., Diaz, L., Shade, S., Ostlander, N., Huerta, J. 2012. Enhancing Integrated Environmental Modelling by Designing Resource-Oriented Interfaces. *Environmental Modelling & Software* (this issue).
- Guzy, M. R., Smith, C.L., Bolte, J.P., Hulse, D.W., Gregory, S.V., 2008. Policy research using agent-based modeling to assess future impacts of urban expansion into farmlands and forests. *Ecol. Soc.* 13 (1), 37.
- Hart, B.T., Shenton, W., Chan, T., 2009. Bayesian Network Models for Environmental Flow Decision-Making. Interim Final Report. Land & Water Australia Project UMO49. Available online at <http://www.sci.monash.edu.au/wsc/publications/docs/2009-interim-final-report.pdf>. Accessed December 5, 2011)
- Heubusch, K. 2006. Interoperability: What it Means, Why it Matters. *J. AHIMA* 77 (1), 26-30.



- Hill, C., DeLuca, C., Balaji, Suarez, M., da Silva, A., 2004. The architecture of the earth system modeling framework. *Comput. Sci. Eng.* 6 (1), 18-28.
- Hill, M.C., Tiedeman, C.R., 2007. Effective calibration of groundwater models, with analysis of data, sensitivities, predictions, and uncertainty. John Wiley and Sons, New York.
- Hinkel, J., 2009. The PIAM approach to modular integrated assessment modelling. *Environmental Modelling & Software*, 24 (6), 739-748
- Holling, C.S. (ed.). 1978. *Adaptive Environmental Assessment and Management*. Wiley, New York.
- Horsburgh, J.S., D.G. Tarboton, M. Piasecki, Maidment, D.R., Zaslavsky, I., Valentine, D., Whitenack, T., 2009. An integrated system for publishing environmental observations data, *Environmental Modelling & Software*, 24(8): 879-888, <http://dx.doi.org/10.1016/j.envsoft.2009.01.002>.
- Horsburgh, J.S., Tarboton, D.G., Maidment, D.R., Zaslavsky, I., 2011. Components of an environmental observatory information system. *Computers & Geosciences*. 37 (2) 207-218
- Hughes, Andrew; Jackson, Chris; Mansour, Majdi; Bricker, Stephanie; Barkwith, Andrew; Williams, Ann; Abesser, Corinna; Wang, Lei. 2011 Integrated modelling within the Thames Basin: examples of BGS work. [Poster] In: *Cities, catchments and coasts: applied geoscience for decision-making in London and the Thames Basin*, London, UK, 13 May 2011. (<http://nora.nerc.ac.uk/14267/>)
- Hulse, D., Branscomb, A., Enright, C., Bolte, J., 2008. Anticipating floodplain trajectories: a comparison of two alternative futures approaches. *Landsc. Ecol.* 24 (8), 1067-1090.
- ICSU (International Council for Science), 2010. *Regional Environmental Change: Human Action and Adaptation*. International Council for Science, Paris.
- IEEE (Institute of Electrical and Electronics Engineers), 1989. IEEE Standard 610.3-1989 – IEEE Standard Glossary of Modeling and Simulation Terminology, Institute of Electrical and Electronics Engineers Standards Association, New York, New York.
- IPCC (Intergovernmental Panel on Climate Change), 2007. *Climate Change 2007: The Physical Science Basis. Contribution of Working Group I to the Fourth Assessment Report of the Intergovernmental Panel on Climate Change*, in: Solomon, S., Qin, D., Manning, M., Chen, Z., Marquis, M., Averyt, K.B., Tignor, M., Miller, H.L. (Eds.), Cambridge University Press, Cambridge, United Kingdom and New York, NY.
- ISCMEM. Interagency Steering Committee for Multi-media Environmental Modeling (<http://iemhub.org/topics/ISCMEM>, last accessed July 1, 2012)
- Jakeman, A. J., Letcher, R. A., 2003. Integrated assessment and modelling: features, principles and examples for catchment management. *Environ. Model. Software* 18 (6), 491-501.

- Jakeman, A. J., Letcher, R. A., Norton, J. P., 2006. Ten iterative steps in development and evaluation of environmental models. *Environ. Model. Software* 21 (5), 602-614.
- Janssen, S., Ewert, F., Li, H., Athanasiadis, I.N., Wirn, J.J.F., Therond, O., Knapen, M.J.R., Bezlepkina, I., Alkan0Olsson, J., Rizzoli, A.E., Belhouchette, H., Svensson, M., van Ittersum, M.K., 2009. Defining assessment projects and scenarios for policy support: Use of ontology in Integrated Assessment and Modelling. *Environmental Modelling & Software*, 24 (12), 1491-1500.
- Janssen, S., Athanasiadis, I.N., Bezlepkina, I., Knapen, R., Li, H., Domínguez, I.P., Rizzoli, A.E., Van Ittersum, M.K., 2011. Linking models for assessing agricultural land use change. *Computers and Electronics in Agriculture*. 76 (2), 148-160.
- Jassby, A. D., Cloern, J. E., 2000. Organic Matter Sources and Rehabilitation of the Sacramento-San Joaquin Delta (California, USA). *Aquat. Conserv: Mar. Freshw. Ecosyst.* 10, 323-352.
- Johannes, R.E. 1998. The case for data-less marine resource management: examples from tropical nearshore fisheries, *Trends in Ecology and Evolution*, 13:243-246.
- Johnston, J. M., McGarvey, D. J., Barber, M. C., Laniak, G., Babendreier, J. E., Parmar, R., Wolfe, K., Kraemer, S. R., Cyterski, M., Knightes, C., Rashleigh, B., Suarez, L., Ambrose, R., 2011. An integrated modeling framework for performing environmental assessments: Application to ecosystem services in the Albemarle-Pamlico basins (NC and VA, USA). *Ecol. Model.* 222 (14), 2471-2484.
- Kepler. The kepler project, 2012. Obtained through the Internet: " <https://kepler-project.org/> " [last accessed 7-1-2012].
- Kragt, M.E., Newham, L.T.H., Bennett, J., Jakeman, A.J., 2011. An integrated approach to linking economic valuation and catchment modelling. *Environmental Modelling & Software*, 26 (1), 92-102
- Krueger, T, Page, T., Hubacek, K., Smith, L., and Hiscock, K. 2012. "The role of expert opinion in environmental modelling." *Environmental Modelling & Software*. 36, 4-18.
- Lancaster, J.J., 2007. Integrated Monitoring, Modeling, and Management (IM3) Methodology Applied to Governance of Global Energy Resources and Global Energy Use. Proceedings of the Amsterdam Conference on the Human Dimensions of Global Environmental Change 'Earth System Governance: Theories and Strategies for Sustainability'. Amsterdam, The Netherlands. May 2007.
- Larson, J.W., Norris, B., Ong, E.T., Bernholdt, D.E., Drake, J.B., Elwasif, W.R., Ham, M.W., Rasmussen, C.E., Kumfert, G., Katz, D.S., Zhou, S., Deluca, C., Collins, N.S. 2004. Components, the common component architecture, and the climate/weather/ocean community. In 84th American Meteorological Society Annual Meeting.
- Lave, J., Wenger, E., 1991. *Situated Learning: Legitimate Peripheral Participation*. Cambridge University Press, Cambridge.

- Lee, Kai N. 1993. *Compass and Gyroscope: Integrating Science and Politics for the Environment*, Island Press, Washington, D.C., 243 p.
- Lehman, P. W., Giulianotti, J., Sevier, J., 2001. *The Contribution of Algal Biomass to Oxygen Demand in the San Joaquin River Deep Water Channel, Fall 2000 (Draft Report)*,” Department of Water Resources, Environmental Services Offices, Sacramento, CA.
- Linker, L.C., Shenk, G.W., Dennis, R.L., Sweeney, J.L., 1999. *Cross-Media Models for the Chesapeake Bay Watershed and Airshed*. Chesapeake Bay Program Office, Annapolis, MD.
- Liu, Y., Gupta, H., Springer, E., Wagener, T., 2008. Linking science with environmental decision making: Experiences from an integrated modeling approach to supporting sustainable water resources management. *Environ. Model. Software* 23 (7), 846-858.
- Ludascher, B., Lin, K., Brodaric, B., Baru, C., 2003. *GEON: Toward a Cyberinfrastructure for the Geosciences—A Prototype for Geologic Map Integration via Domain Ontologies*. . U.S. Geological Survey Open-File Report 03-071.
- Luna-Reyes, L.F., 2003. *Model Conceptualization: A Critical Review*, in: Eberlein, R., Diker, V., Langer, R., Rowe, J. (Eds.), *Proceedings of the 21st International Conference of the System Dynamics Society*. July 20 - 24, 2003 New York City, NY <http://www.systemdynamics.org/conferences/2003/proceed/PAPERS/236.pdf> (last accessed December 6, 2011)
- Maidment, D.R., Hooper, R.P., Tarboton, D.G., Zaslaksky, I., 2009. Accessing and sharing data using CUAHSI Water Data Services. . *Hydroinformatics in Hydrology, Hydrogeology and Water Resources* (Proc. of Symposium JS.4 at the Joint IAHS & IAH Convention, Hyderabad, India, September 2009). IAHS Publ. 331, 213-223.
- Marin, C.M., V. Guvanasen, Z.A. Saleem. 2003. The 3MRA Risk Assessment Framework - A Flexible Approach For Performing Multimedia, Multipathway, and Multireceptor Risk Assessments Under Uncertainty. *Hum. & Eco. Risk Assessment*, 9(7):1655-1677.
- Matott, L.S., J.E. Babendreier, and S.T. Purucker. 2009. Evaluating uncertainty in integrated environmental models: A review of concepts and tools, *Water Resour. Res.*, 45, W06421, doi:10.1029/2008WR007301.
- Maxwell, T., Costanza, R., 1995. Distributed modular spatial ecosystem modelling. *Int. J. of Comp. Simul.* 5 (3), 247-262.
- Mackay, D. 1991. *Multimedia Environmental Models: The Fugacity Approach*. Lewis Publishers, Michigan.
- Makropoulos, C., E. Safiolea, S. Baki, E. Douka, A. Stamou, and M. Mimikou, 2010. An integrated, multi-modelling approach for the assessment of water quality: lessons from the Pinios River case in Greece. *International Environmental Modelling and Software Society (iEMSs)*. 2010 International Congress on Environmental Modelling and Software Modelling for Environment's Sake, Fifth Biennial Meeting, Ottawa, Canada.

- McCarthy, M.A. and H.P. Possingham. 2007. Active adaptive management for conservation. *Conservation Biology*, 21:956-963.
- McIntosh, B.S., Ascough, J.C., Twery, M., Chew, J., Elmahdi, A., Haase, D., Harou, J.J., Hepting, D., Cuddy, S., Jakeman, V., Chen, S., Kassahun, A., Lautenbach, S., Matthews, K., Merritt, W., Quinn, N.W.T., Rodriguez-Roda, I., Sieber, S., Stavenga, M., Sulis, A., Ticehurst, J., Volk, M., Wrobel, M., van Delden, H., El-Sawah, S., Rizzoli, A.E. and Voinov, A.A. (2011) Environmental Decision Support Systems EDSS development: challenges and best practices. In: *Environmental Modelling and Software*, 26, 1389-1402.
- McNie, E. C., 2006. Reconciling the supply of scientific information with user demands: an analysis of the problem and review of the literature. *Environ. Sci. Pol.* 10, 17 - 38.
- MEA (Millenium Ecosystem Assessment), 2005. *Ecosystems and Human Well-being: Synthesis*. Island Press, Washington, D.C.
- Meadows, D.H., Meadows, D. L., Randers, J., Behrens, W., 1972. *The Limits to Growth*. Universe Books, New York.
- Moore, R.V., Tindall, C., 2005. An overview of the open modelling interface and environment (the OpenMI). *Environ. Sci. Pol.* 8 (3), 279-286.
- Moore R., Gijbbers, P., Fortune, D., Gergersen, J., Blind, M., 2005. *OpenMI Document Series: Part A Scope for the OpenMI (Version 1.0)*, HarmonIT.
- Muetzelfeldt, R., Masheder, J., 2003. The Simile visual modeling environment. *Eur. J. Agron.* 18, 345 – 358.
- Müller J.P. 2010, A framework for integrated modeling using a knowledge-driven approach, in: *Proceedings of the International Congress on Environmental Modelling and Software*, Ottawa, Canada.
- Napier, B.A. 2007. *GENII Version 2 Users' Guide*. PNNL-14583, Pacific Northwest National Laboratory, Richland, WA.
- Nativi, S., Mazzetti, P., Geller, G.N., 2012. Environmental Model Access and Interoperability: the GEO Model Web Initiative. *Environmental Modelling & Software* (this issue).
- Noth, M., Borning, A., Waddell, P., 2000. *An Extensible, Modular Architecture for Simulating Urban Development, Transportation and Environmental Impacts*. Technical Report 2000-12-01. University of Washington, Department of Computer Science.
- NRC (National Research Council), 2005. *Decision Making for the Environment: Social and Behavioral Science Research Priorities*. National Academies Press, Washington, DC.
- NRC (US Nuclear Regulatory Commission), 2002. *Proceedings of the Environmental Software Systems Compatibility and Linkage Workshop*. NUREG/CP-0177, PNNL-13654. Hosted by The U.S Nuclear Regulatory Commission, Professional Development Center.

- Rockville, MD March 7–9, 2000. <http://www.nrc.gov/reading-rm/doc-collections/nuregs/conference/cp0177/> (last accessed: December 6, 2011).
- NSF. US National Science Foundation(NSF) Science, Engineering, and Education for Sustainability (SEES) portfolio of activities ([http://www.nsf.gov/funding/pgm\\_summ.jsp?pims\\_id=504707](http://www.nsf.gov/funding/pgm_summ.jsp?pims_id=504707), last accessed July 1, 2012)
- Onishi, Y., A.R. Olsen, M.A. Parkhurst, and G. Whelan. 1985. Computer-Based Environmental Exposure and Risk Assessment Methodology for Hazardous Materials. *J. Haz. Mat.* 10:389-417.
- OpenMI, 2009. The Open-MI life project website <http://www.openmi-life.org/> (last accessed: December 6, 2011).
- Oreskes, N., 2003. The role of quantitative models in science, in: Canham, C.D., Cole, J.J., Lauenroth, W.K., (Eds.) *Models in Ecosystem Science*. Princeton University Press, Princeton. pp. 13-31.
- Otto-Banaszak, I., Matczak, P., Wesseler, J., Wechsung, F., 2011. Different perceptions of adaptation to climate change: a mental model approach applied to the evidence from expert interviews. *Reg. Environ. Change* 11, 217–228.
- Özesmi, U., Özesmi, S.L. 2004. Ecological models based on people’s knowledge: A Multi-step Fuzzy Cognitive Mapping Approach, *Ecol. Model.* 176, 43–64.
- Parker, P., Letcher, R., Jakeman, A., Beck, M.B., Harris, G., Argent, R.M., Hare, M., Pahl-Wostl, C., Voinov, A., Janssen, M., Sullivan, P., Scoccimarro, M., Friend, A., Sonnenshein, M., Barker, D., Matejicek, L., Odulaja, D., Deadman, P., Lim, K., Larocque, G., Tarikhi, P., Fletcher, C., Put, A., Maxwell, T., Charles, A., Breeze, H., Nakatani, N., Mudgal, S., Naito, W., Osidele, O., Eriksson, I., Kautsky, U., Kautsky, E., Naeslund, B., Kumblad, L., Park, R., Maltagliati, S., Girardin, P., Rizzoli, A., Mauriello, D., Hoch, R., Pelletier, D., Reilly, J., Olafsdottir, R., Bin, S., 2002. Progress in integrated assessment and modelling. *Environ. Model. Software* 17 (3), 209-217.
- Parson, E. A., 1995. Integrated assessment and environmental policy making: In pursuit of usefulness. *Energy Policy* 23 (4-5), 463-475.
- Peckham, S.D., 2010. Valuation of Model Coupling Frameworks for Use by the Community Surface Dynamics Modeling System (CSDMS). [http://csdms.colorado.edu/mediawiki/images/Peckham\\_2008\\_IGWMC.pdf](http://csdms.colorado.edu/mediawiki/images/Peckham_2008_IGWMC.pdf) (last accessed December 6, 2011).
- Peckham, S., E. Hutton, and B. Norris. 2012. A Component-based Approach to Integrated Modeling in the Geosciences: The Design of CSMDs. *Computers and Geosciences: Modeling for Environmental Change*. (in press)

- Perkins, R. 2012. FDA Perspective on Multi-Scale data Integration. National Center for Toxicological Research, U.S. Food and Drug Administration. Presented at the Society of Toxicology, Contemporary Concepts in Toxicology Meeting: Building For Better Decision: Multi-Scale Integration of Human Health and Environmental Data, US Environmental Protection Agency, Research Triangle Park, North Carolina, May 8-11, 2012 (last accessed July 12, 2012, [https://www.toxicology.org/ai/meet/cct\\_b4bd.asp](https://www.toxicology.org/ai/meet/cct_b4bd.asp)).
- Quinn, N.W.T., Jacobs, K.C., 2006. An Emergency Environmental Response System to Protect Migrating Salmon in the Lower San Joaquin River. *Environ. Model. Software* 22, 416-422.
- Quintessa. 2012. Amber (<http://www.quintessa.org/software/index.html?amber.html>, (last accessed June 8, 2012).
- Ramaswami, A., J.B. Milford, and M.J. Small. 2005. *Integrated Environmental Modeling: Pollutant Transport, Fate, and Risk in the Environment*. John Wiley & Sons, New York, 678 pp.
- Reckhow, K.H., 2003. Bayesian approaches to ecological analysis and modeling, in: Canham, C.D., Cole, J.J., Lauenroth, W.K., (Eds.), *Models in Ecosystem Science*. Princeton Univ Press, 168-183
- Refsgaard, J.C., van der Sluijs, J.P., Hojberg, A.L., Vanrolleghem, P.A., 2007. Uncertainty in the environmental modeling process – A framework and guidance. *Environmental Modelling & Software* 22, 1543-1556.
- Reussner F., Alex J.; Bach M., Schütze, M., Muschalla, D., 2009. Basin-wide integrated modelling via OpenMI considering multiple urban catchments. *Water Science and Technology*. Volume 60, Issue: 5, 1241-1248 DOI: 10.2166/wst.2009.471.
- Rotmans, J., van Asselt, M.B.A., 2001. Uncertainty Management in Integrated Assessment Modeling: Towards a Pluralistic Approach. *Environ. Monit. Assess.* 69 (2), 101-130.
- Rosenberg, N. J., Edmonds, J.A., 2005. Climate Change Impacts for the Conterminous USA: An Integrated Assessment: From Mink to the 'Lower 48'. *Clim. Chang.* 69 (1), 1-6.
- Rouwette, E.A.J.A, Vennix, J.A.M., van Mullekom, T., 2002. Group model building effectiveness: a review of assessment studies. *System Dynamics Review*, 18 (1), 5-45.
- Saltelli, A., Ratto. M., Andres, T., Campolongo, F., Cariboni, J., Gatelli, D., Saisana, M., Tarantola, S., 2008. *Global sensitivity analysis, the primer*: John Wiley and Sons, Hoboken, New Jersey.
- Samarasinghe, S., Strickert, G., 2012. Mixed-method Integration and Advances in Fuzzy Cognitive Maps for Computational Policy Simulations for Natural Hazard Mitigation. *Environ. Model. Software* (this issue).

- Schaldach, R., Alcamo, J., Koch, J., Kolking, C., Lapola, D.M., Schungel, J., Priess, J.A. 2011. An integrated approach to modelling land-use change on continental and global scales Original Research Article. *Environmental Modelling & Software*, 26 (8), 1041-1051.
- Schellekens, J., Veldhuizen, A.A., Manders, A.M.M., Winsemius, H.C. M., van Verseveld, W.J., te Linde, A.H., van Uft, L.H., van Meijgaard, E., Schaap, M., Barendregt, A., Schot, P.P., Wassen, M.J., Ward, P. J., Veldkamp, T. I. E., Mulder, H.M., Verkaik, J., 2011. KKK-Model platform coupling. Summary report KKF01b. Deltares, TNO, Alterra, VU Amsterdam, Universiteit Utrecht, KNMI, The Netherlands, Final Report KFC/038A/2011, ISBN 978-94-90070-00-7.
- Schwarz, G.E., Hoos, A.B., Alexander, R.B., and Smith, R.A., 2006. The SPARROW surface water-quality model: Theory, application and user documentation: U.S. Geological Survey Techniques and Methods. Book 6, Section B, Chapter 3 <http://pubs.usgs.gov/tm/2006/tm6b3/>. (last accessed December 6, 2011).
- Sengupta, R., Bennett, D.A., 2003. Agent-based modeling environment for spatial decision support. *Int. J. of Geogr. Inf. Sci.* 17 (2), 157-180.
- Shea, K., H.P. Possingham, W.W. Murdoch, and R. Roush. 2002. Active adaptive management in insect pest and weed control: intervention with a plan for learning. *Ecological Applications*, 12:927-936.
- Sidle, R.C., 2006. Field observations and process understanding in hydrology: essential components in scaling. *Hydrological Processes* 20: 1439-1445.
- Sleeswijk, A.W., Heijungs, R., 2010. GLOBOX: A spatially differentiated global fate, intake, and effect model for toxicity assessment in LCA. *Sci. Total Environ.* 408, 2817–2832.
- Sommerfreund, J.K., Gandhi, N., Diamond, M.L., Mugnai, C., Frignani, M., Capodaglio, G., Gerino, M., Bellucci, L.G., Giuliani, S., 2010. Contaminant fate and transport in the Venice Lagoon: Results from a multi-segment multimedia model. *Ecotoxicol. Environ. Saf.* 73, 222–230.
- Stahl, C.H., Cimorelli, A., Chow, A., 2002. A new Approach to Environmental Decision Analysis: Multi-criteria Integrated Resource Assessment (MIRA). *Bull. Sci. Tech. Soc.* 22 (6), 443-459.
- Stahl, C., Cimorelli, A., Mazzarella, Jenkins, B., 2011. Toward sustainability: A case study demonstrating trans-disciplinary learning through the selection and use of indicators in a decision making process, *Integr. Environ. Assess. Manag.* 7, 483–498.
- Stankey, G.H., R.N. Clark, and B.T. Bormann. 2005. Adaptive management of natural resources: theory, concepts, and management institutions. Gen. Tech. Rep. PNW-GTR-654. Portland, OR: U.S. Department of Agriculture, Forest Service, Pacific Northwest Research Station, 73 p.

- Tapscott, D., Williams, A.D., 2006. *Wikinomics: How Mass Collaboration Changes Everything*, Portfolio, New York, NY.
- Tarboton, D. G., Horsburgh, J.S., Maidment, D. R., Whiteaker, T., Zaslavsky, I., Piasecki, M., Goodall, J., Valentine, D., Whitenack, T. 2009. Development of a Community Hydrologic Information System, 18th World IMACS Congress and MODSIM09 International Congress on Modelling and Simulation, ed. R. S. Anderssen, R. D. Braddock and L. T. H. Newham, Modelling and Simulation Society of Australia and New Zealand and International Association for Mathematics and Computers in Simulation, 988-994, [http://www.mssanz.org.au/modsim09/C4/tarboton\\_C4.pdf](http://www.mssanz.org.au/modsim09/C4/tarboton_C4.pdf).
- Tarboton, D.G., D. Maidment, D., Zaslavsky, I., Ames, D., Goodall, J., Hooper, R.P., Horsburgh, J., Valentine, D., Whiteaker, T., Schreuders, K., 2011. Data Interoperability in the Hydrologic Sciences, The CUAHSI Hydrologic Information System, Proceedings of the Environmental Information Management Conference 2011, 132-137, <http://eim.ecoinformatics.org/eim2011/eim-proceedings-2011/view>.
- Thurman, D.A., A.J. Cowell, R.Y. Taira, and J. Frodge. 2004. Designing a collaborative problem solving environment for integrated water resource modeling. In: G. Whelan (ed.) *Brownfields: Multimedia Modeling and Assessment*, WIT Press, Southampton, UK.
- Tol, R.S.J., Vellinga, P., 1998. The European Forum on Integrated Environmental Assessment. *Environ. Model. Assess.* 3 (3), 181-191.
- Tress, G., Tress, B., Fry, G., 2005. Clarifying Integrative Research Concepts in Landscape Ecology. *Landsc. Ecol.* 20 (4), 479-493.
- Van Delden, H., Seppelt, R., White, R., Jakeman, A.J. 2011. A methodology for the design and development of integrated models for policy support. *Environmental Modelling & Software*, 26 (3), 266-279.
- van Ittersum, M. K., Ewert, F., Heckeley, T., Wery, J., Olsson, J.A., Andersen, E., Bezlepkina, I., Brouwer, F., Donatelli, M., Flichman, G., Olsson, L., Rizzoli, A.E., van der Wal, T., Wien, J.E., Wolf, J., 2008. Integrated assessment of agricultural systems – A component-based framework for the European Union (SEAMLESS). *Agricultural Systems* 96, 150-165.
- Voinov, A., Fitz, C., Boumans, R., Costanza, R. 2004. Modular ecosystem modeling, *Environmental Modelling & Software*, 19 (3), 285–304.
- Voinov, A., Gaddis, E., 2008. Lessons for Successful Participatory Watershed Modeling: A Perspective from Modeling Practitioners. *Ecological Modelling*: 216, p. 197–207.
- Voinov A. 2008. *Systems Science and Modeling for Ecological Economics*. Academic Press, 430 p.



- Voinov, A., Bousquet, F., 2010. Modelling with stakeholders. *Environ. Model. Software* 25 (11), 1268-1281.
- Voinov, A., and Cerco, C., 2010. Model integration and the role of data. *Environmental Modelling & Software* 25, no. 8: 965-969.
- Voinov, A., Shugart, H., 2012. “Integronsters”, integral and integrated modeling. *Environmental Modelling and Software (this issue)*.
- Walters, C.J., 1986. *Adaptive Management of Renewable Resources*. New York: Macmillan Publishing Co.
- Wang, W.G., Tolk, A., Wang, W.P. 2009. The Levels of Conceptual Interoperability Model: Applying Systems Engineering Principles to Modeling and Simulation, in: *Proceedings of the Spring Simulation Multiconference*. Society for Modeling & Simulation International (SCS), San Diego, CA.  
(<http://arxiv.org/ftp/arxiv/papers/0908/0908.0191.pdf>)
- Weyant, J. P., Davidson, O., Dowlatabadi, H., Edmonds, J.A., Grubb, M., Parson, E.A., Richels, R., Rotmans, J., Shukla, P.R., Tol, R.S.J., Cline, W.R., Fankhauser, S., 1996. Integrated assessment of climate change: An overview and comparison of approaches and results, in: Bruce, J.P., Lee, H., Haites, E.F., (Eds.), *Climate Change 1995: Economic and Social Dimensions of Climate Change Contribution of Working Group III to the Second Assessment Report of the Intergovernmental Panel on Climate Change*. Cambridge University Press, New York City, NY, pp. 368-396.
- Whelan, G., D.L. Streng, J.G. Droppo, Jr., and B.L. Steelman. 1986. Overview of the Remedial Action Priority System (RAPS). In: *Pollutants in a Multimedia Environment*. Y. Cohen (ed.). Plenum Press, New York, pp. 191-227.
- Whelan, G. and T. Nicholson (eds). 2002. *Proceedings of the Environmental Software and Systems Compatibility and Linkage Workshop*. NUREG/CP-0177, PNNL-13654, U.S. Nuclear Regulatory Commission, Rockville, MD.
- Williams, B.K. 2011. Passive and active adaptive management: Approaches and an example. *J. of Environmental Management*, 92:1371-1378.
- Yu, C., A. J. Zielen, J.-J. Cheng, Y. C. Yuan, L. G. Jones, D. J. LePoire, Y. Y Wang, C. O. Loureiro, E. Gnanapragasm, E. Faillace, A. Wallo III, W. A. Williams, and H. Peterson. 1993. *Manual for Implementing Residual Radioactive Material Guidelines Using RESRAD, Version 5.0, ANL/EAD/LD-2*, Argonne National Laboratory.
- Zagonel, A.A., 2002. Model Conceptualization in Group Model Building: A Review of the Literature Exploring the Tension Between Representing Reality and Negotiating a Social Order. *Proceedings of the 2002 International Conference of the System Dynamics Society*. Palermo, Italy (July 28 – August 1).

Zartarian V., J. Xue, G. Glen, L. Smith, N. Tolve, and R. Tornero-Velez. 2012. Quantifying children's aggregate (dietary and residential) exposure and dose to permethrin: application and evaluation of EPA's probabilistic SHEDS-Multimedia model. *J. Exposure Sci. and Environ. Epidemiology*, 22:267-273.