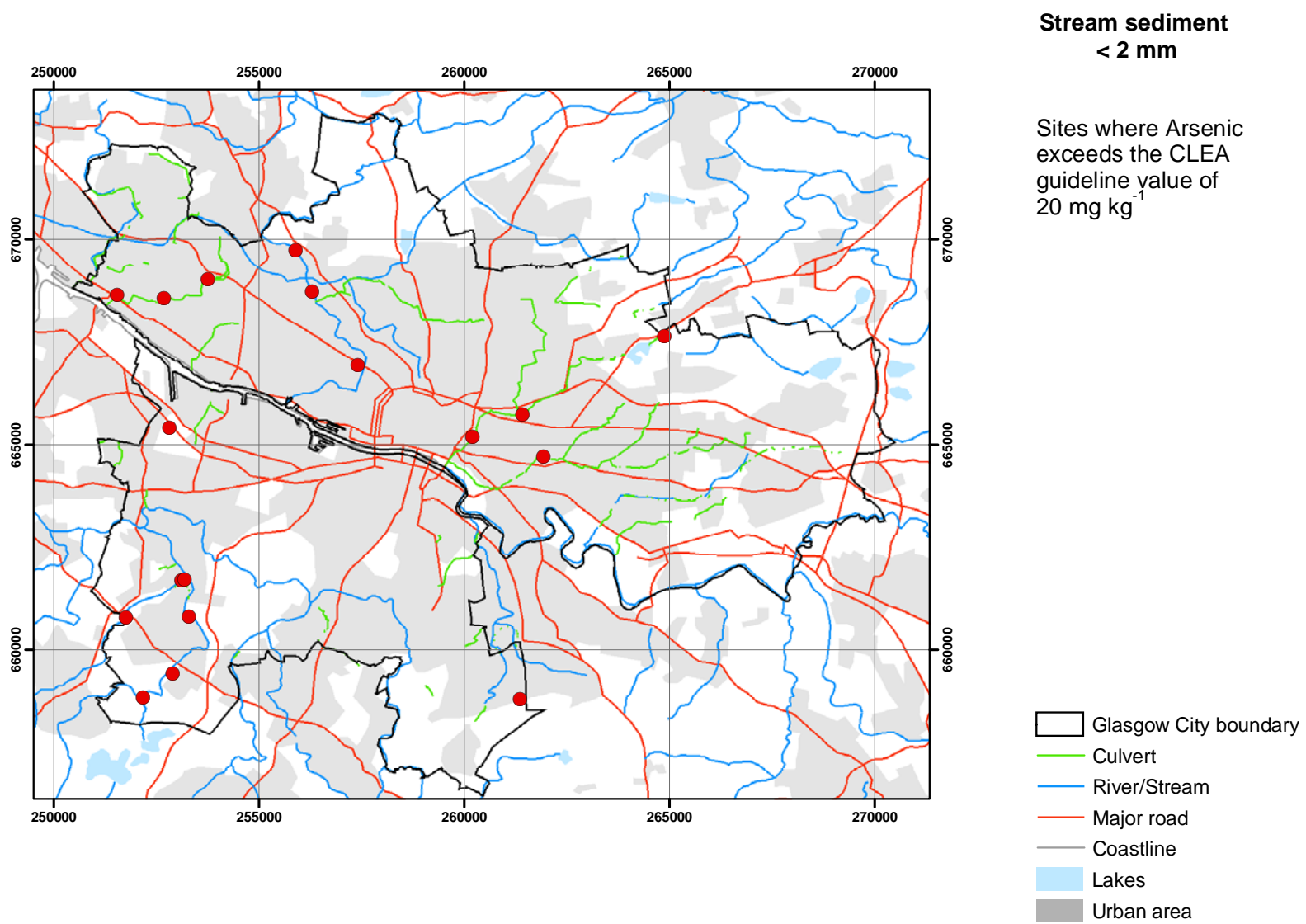
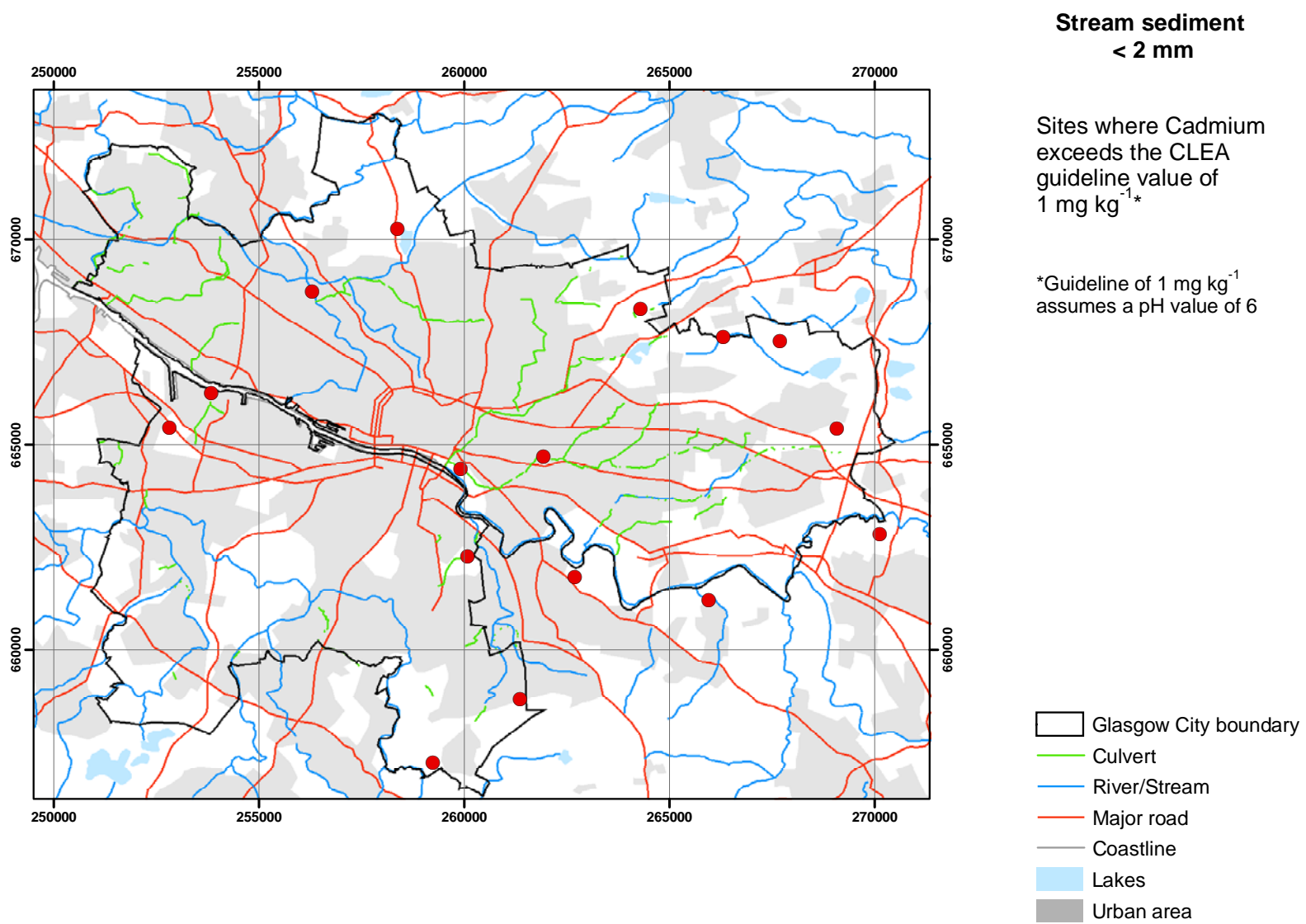


Annex 5

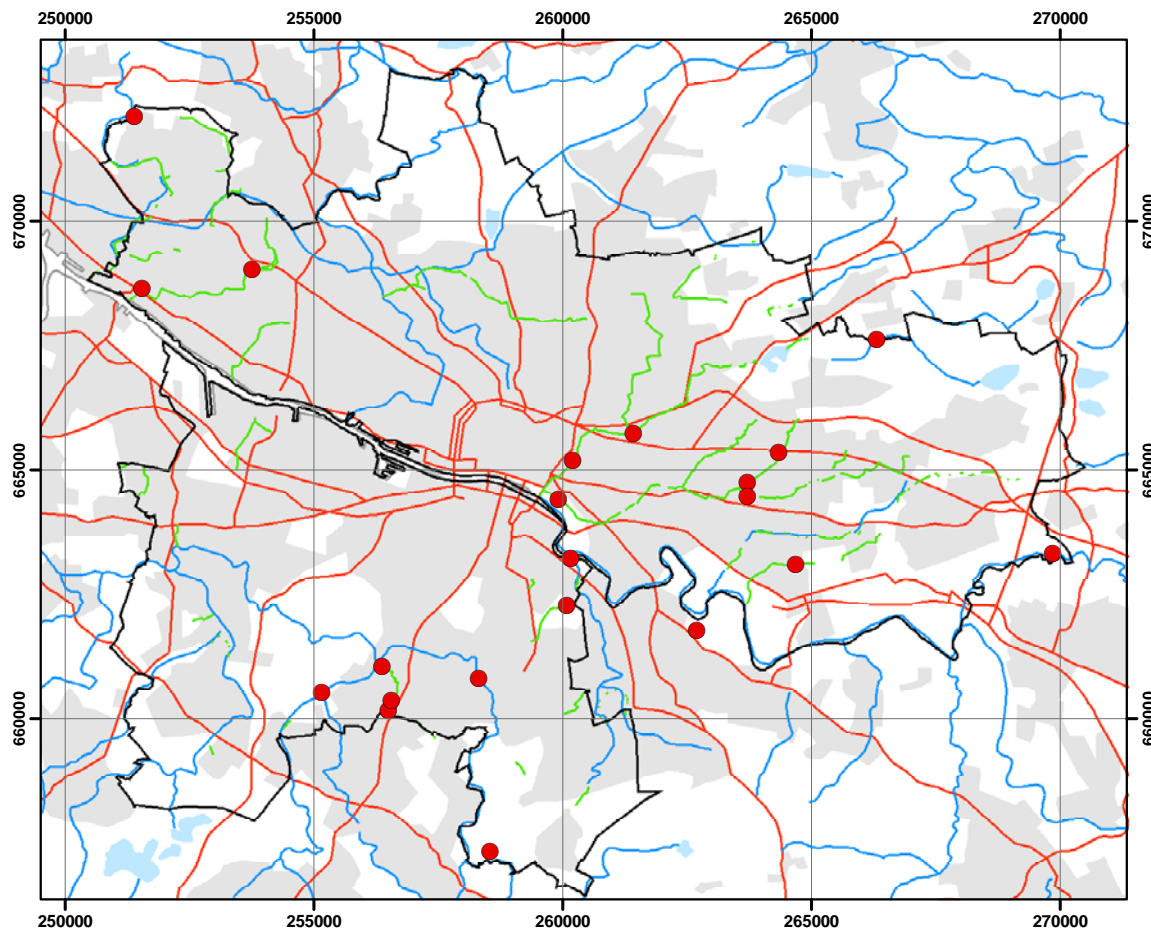
Urban <2mm Stream Sediment Where CLEA Guidelines are Exceeded





Stream sediment < 2 mm

Sites where Chromium
exceeds the CLEA
guideline value of
 130 mg kg^{-1}



- Glasgow City boundary
- Culvert
- River/Stream
- Major road
- Coastline
- Lakes
- Urban area

