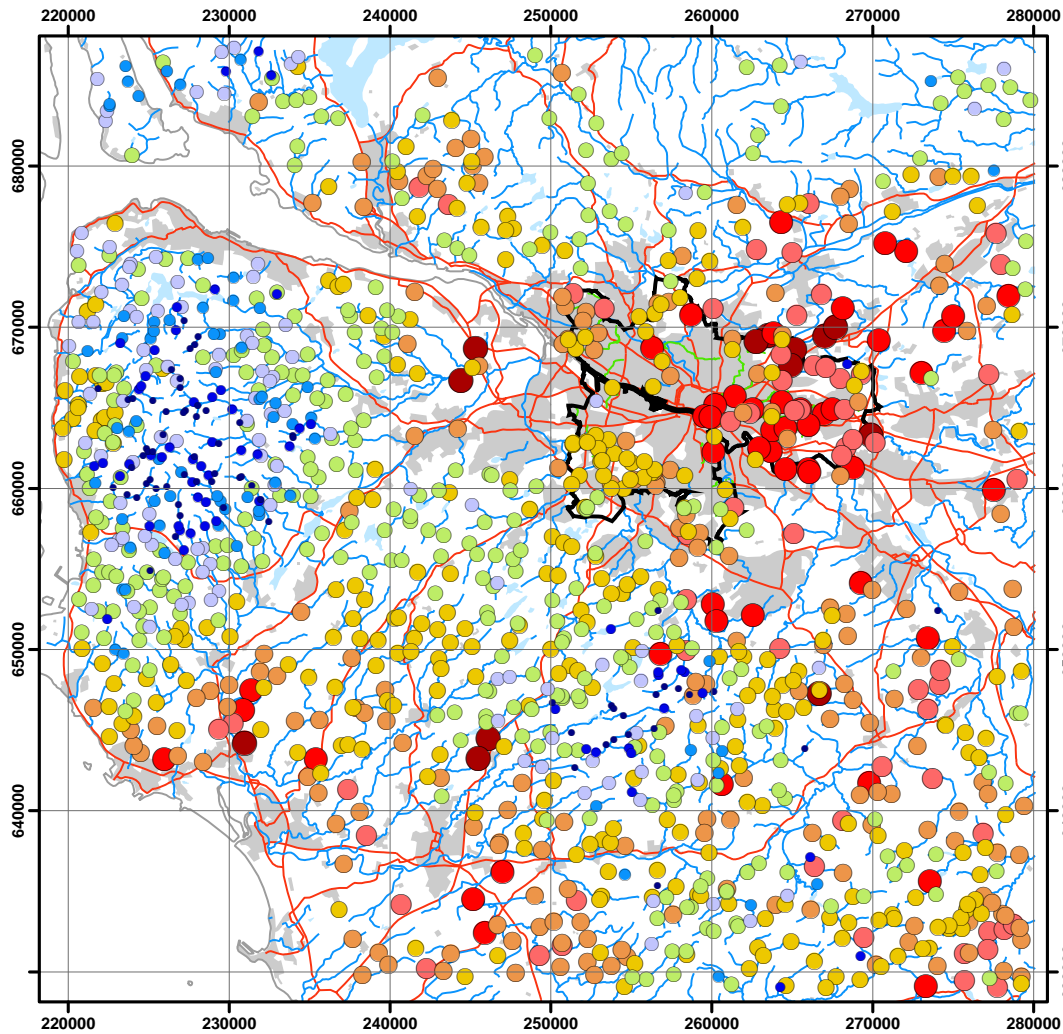


## **Annex 2**






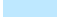

## **Urban and Rural Surface Water Geochemical Maps**

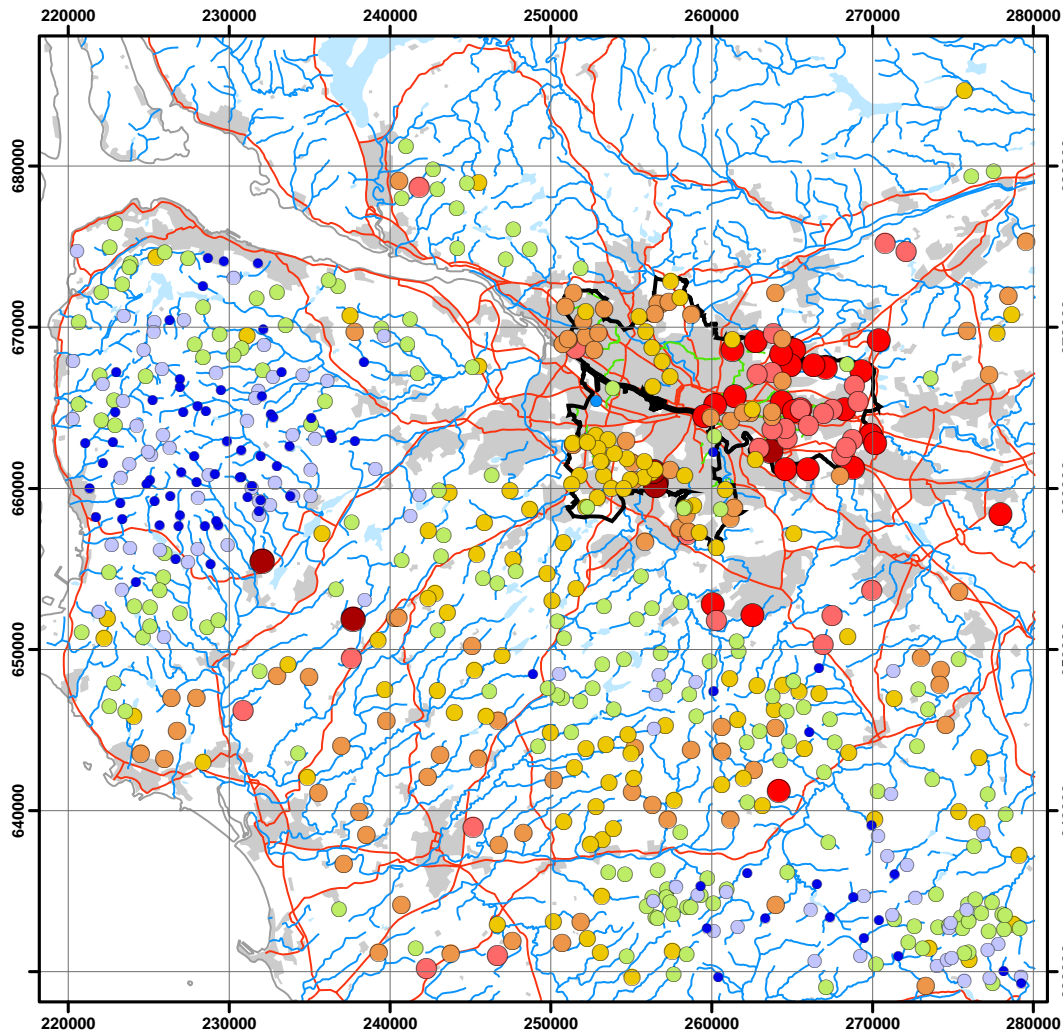


## Urban and Rural Surface Water

### Conductivity

Percentile	Value $\mu\text{S cm}^{-1}$
100%	1003 - 2700
99%	709 - 1002
95%	522 - 708
90%	368 - 521
75%	222 - 367
50%	118 - 221
25%	76 - 117
15%	61 - 75
10%	45 - 60
5%	5 - 44
0%	







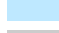
-  Glasgow City boundary
-  Culvert
-  River/Stream
-  Major road
-  Coastline
-  Lakes
-  Urban area

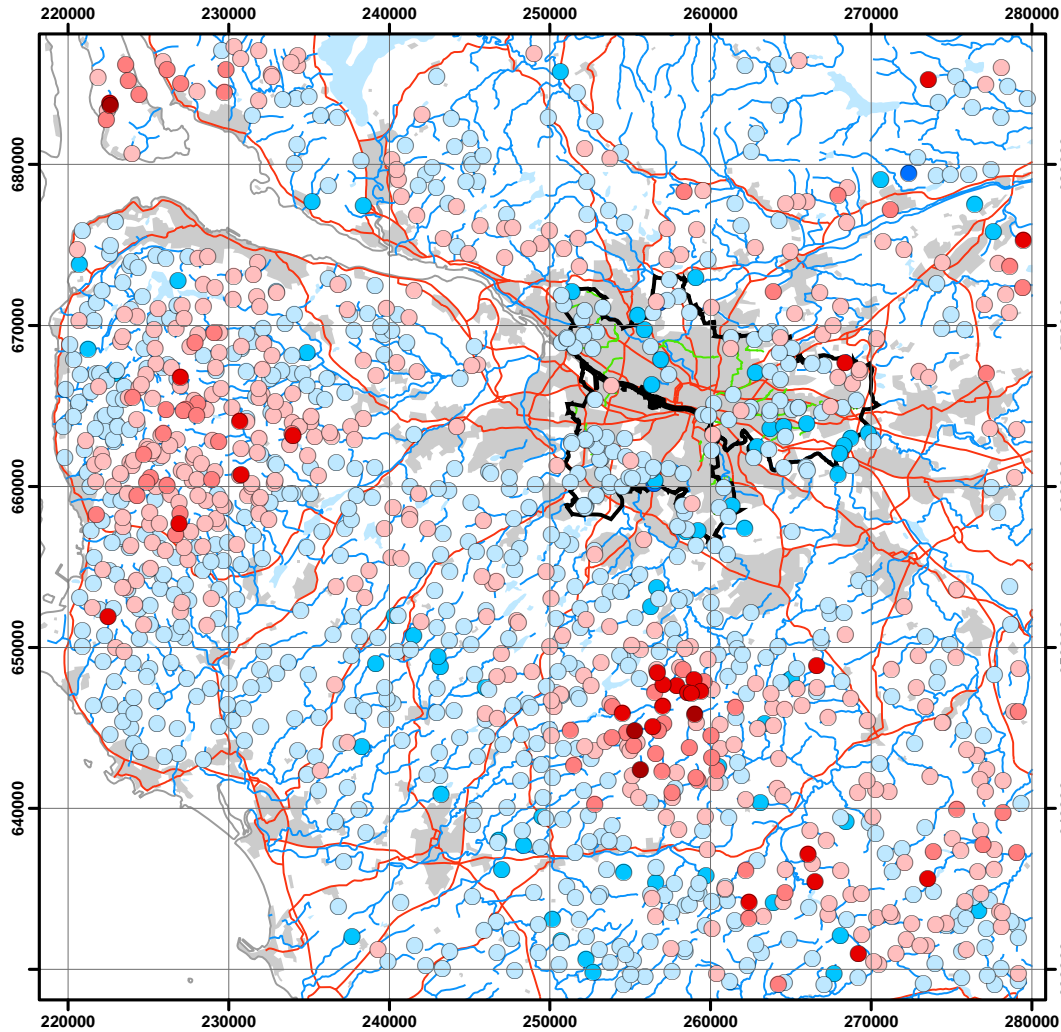


## Urban and Rural Surface Water

### Fluoride

Percentile	Concentration mg L <sup>-1</sup>
100%	0.4301 - 1.0500
99%	0.2371 - 0.4300
95%	0.1901 - 0.2370
90%	0.1201 - 0.1900
75%	0.0801 - 0.1200
50%	0.0501 - 0.0800
25%	0.0491 - 0.0500
15%	0.0401 - 0.0490
10%	0.0050 - 0.0400
0%	

-  Glasgow City boundary
-  Culvert
-  River/Stream
-  Major road
-  Coastline
-  Lakes
-  Urban area



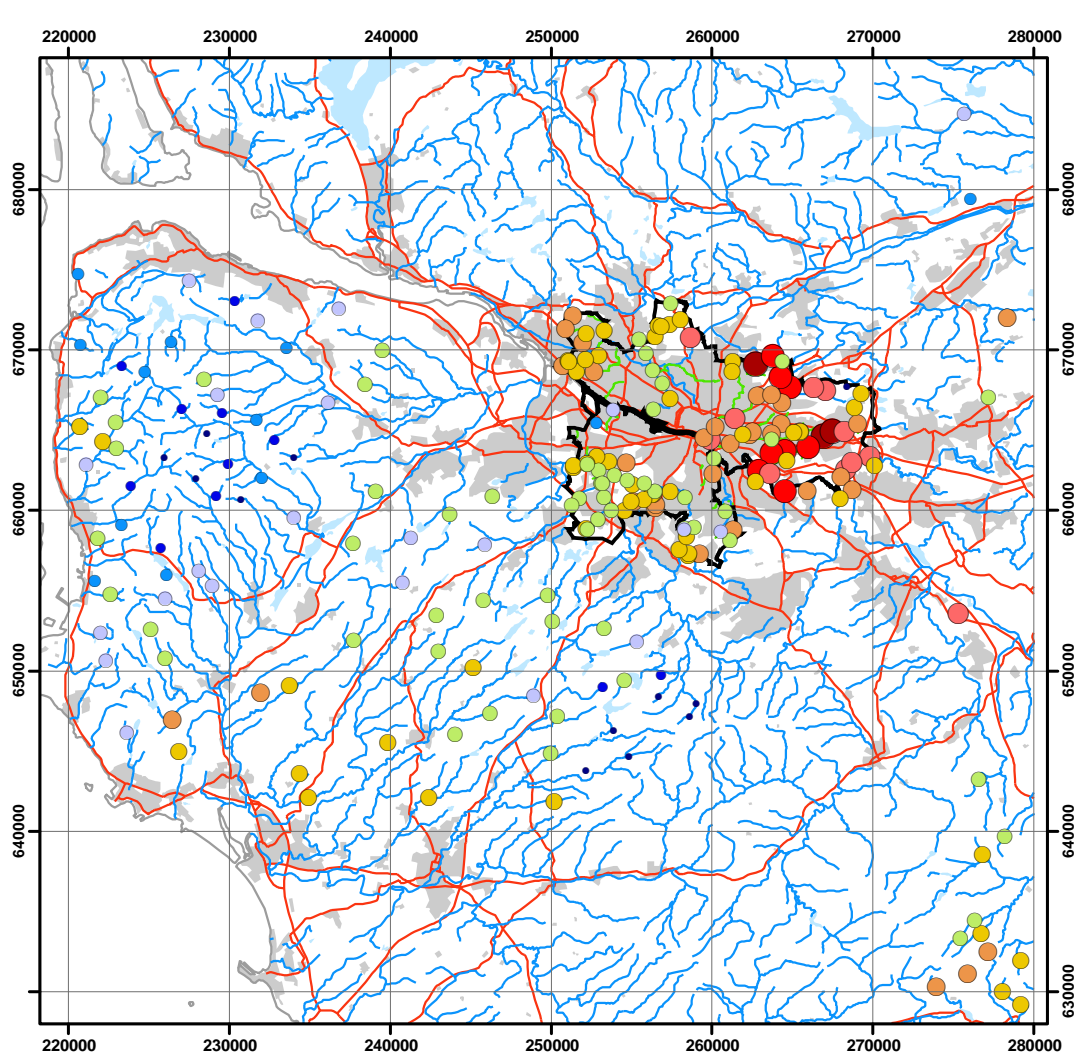
### Urban and Rural Surface Water

pH

Value

- 9.01 - 9.30
- 8.01 - 9.00
- 7.01 - 8.00
- 6.01 - 7.00
- 5.01 - 6.00
- 4.01 - 5.00
- 3.60 - 4.00






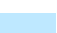

- ▭ Glasgow City boundary
- Culvert
- River/Stream
- Major road
- Coastline
- Lakes
- Urban area



## Urban and Rural Surface Water

### Total Alkalinity

Percentile	Concentration mg L <sup>-1</sup>
100%	436.694 - 451.104
99%	334.184 - 436.693
95%	259.934 - 334.183
90%	152.401 - 259.933
75%	96.001 - 152.400
50%	47.001 - 96.000
25%	30.001 - 47.000
15%	16.601 - 30.000
10%	8.301 - 16.600
5%	0.012 - 8.300
0%	

-  Glasgow City boundary
-  Culvert
-  River/Stream
-  Major road
-  Coastline
-  Lakes
-  Urban area