

Article (refereed) - postprint

Welch, D.. 2016. **The floristic changes of Scottish moorland dominated by heather (*Calluna vulgaris*, Ericaceae) but unburnt for 50 years and kept checked by moderate grazing.**

© 2016 Botanical Society of Britain & Ireland

This version available <http://nora.nerc.ac.uk/515261/>

NERC has developed NORA to enable users to access research outputs wholly or partially funded by NERC. Copyright and other rights for material on this site are retained by the rights owners. Users should read the terms and conditions of use of this material at

<http://nora.nerc.ac.uk/policies.html#access>

This is an Accepted Manuscript of an article published by Taylor & Francis Group in *Bird Study* on 21/06/2016, available online:

<http://www.tandfonline.com/doi/full/10.1080/20423489.2016.1178061>

Contact CEH NORA team at
noraceh@ceh.ac.uk

1 **The floristic changes of Scottish moorland dominated by heather (*Calluna***
2 ***vulgaris*) but unburnt for 50 years and kept checked by moderate grazing.**

3
4 **David Welch**

5
6 Centre for Ecology & Hydrology, Edinburgh Research Station, Bush Estate, Penicuik,
7 Midlothian, EH26 0QB, UK.
8

9 Vegetation and herbivore usage have been monitored since 1969/1970 at four moorland
10 sites where heather (*Calluna vulgaris*) remained the main species under moderate levels
11 of grazing. Much of the annual growth of the heather was regularly consumed by this
12 grazing, but no burning occurred to remove heather biomass. Two sites were on acidic
13 base-poor soils and had only minor cover of grasses and herbs, their vegetation having
14 most affinity to H10 heath in the National Vegetation Classification of British plant
15 communities. The other two sites were on more base-rich soils, and grasses and herbs
16 had substantial cover; their vegetation showed most affinity to NVC CG11a grassland.
17 One of the latter sites lies at 700 m and *Calluna* grew poorly being close to its
18 altitudinal limit; the other three sites were at lower altitude and *Calluna* grew strongly
19 creating dense swards. Over the 43-44 years of observation *Calluna* increased
20 moderately in height but many subordinate higher plants declined in cover, as measured
21 by point-quadrat recording. Bryophytes increased at three sites largely due to
22 substantial gains of *Hylocomium splendens*, but other pleurocarpous mosses suffered
23 some declines. At the three lower-altitude sites species number fell by 20 - 35%
24 between the first and last recordings, but at the high-altitude site there was negligible
25 change in species number. The main drivers of change were the grazing received and
26 the performance of *Calluna*, and no evidence was found of species composition
27 reacting to climate change or nitrogen deposition. To maintain diversity, timely
28 burning is recommended.
29

30 **Keywords:** Floristics, Grazing, Heather moorland, Long-term monitoring, NVC plant
31 communities, Vegetation change
32
33

34 **Introduction**

35 Heathlands with dominant heather (*Calluna vulgaris*) occur extensively in upland
36 Britain, and nine National Vegetation Classification (NVC) communities of this type,
37 excluding mires, are recognised in Scotland (Rodwell, 1991). These communities are
38 differentiated most importantly by altitude and soil type, but in reality there is a
39 continuum of compositional variation and the communities are simply convenient
40 reference points (Averis *et al.*, 2004). Moreover there are many transitional
41 communities to the different types of grassland that develop when heather moorland is
42 heavily grazed by large herbivores (Welch, 1984a). In Europe heathland is an
43 endangered habitat being listed in the EC Habitats Directive 92/43/EEC (Newton *et al.*,
44 2009), and the heather moors of upland Britain are important due both to their large
45 extent and high conservation value (Thompson *et al.*, 1995).

1
2
3
4
5
6
7
8
9
10
11
12
13
14
15
16
17
18
19
20
21
22
23
24
25
26
27
28
29
30
31
32
33
34

Most heather moorland in Britain is maintained by burning, this management being carried out at approximately 20-year intervals to create suitable habitat for red grouse and nutritious forage for livestock (Hester & Sydes, 1992; Yallop *et al.*, 2006); unless burnt the moors would often be colonised by trees and eventually develop into woodlands. Burning much affects the botanical composition of heathland, and some experimental studies have recorded post-fire successions e.g. Hobbs & Gimingham (1984) for NE Scotland and Vandvik *et al.* (2005) for Norwegian coastal heathland. This latter study also assessed the impact of sheep grazing by having fenced-off control ground for each of three habitat types, but in both these studies composition was observed for only a short time (5-6 years) after burning. Other workers have examined vegetation in known-age burnt patches of moorland, e.g. Harris *et al.* (2011), without recording the grazing received since the fires. But to fully understand the determinants of heathland composition it is necessary to monitor the period following the initial post-fire recovery especially because this phase may last for over forty years, thereby making small one-direction changes become important.

Long-term vegetation changes have been assessed in some Scottish upland sites, notably over 50 years by Ross *et al.* (2012), but the grazing pressures allowing or causing these changes have not been monitored, and the lack of intermediate observations has meant that persistent steady change cannot be distinguished from short-term variation. Moreover short-term fluctuations immediately prior to final observations may lead to misleading assessments of long-term trends. The inadequacy of knowledge on post-fire moorland successions in Britain is now widely recognised, e.g. by Harris *et al.* (2011) who comment that the lack of reliable predictive information to inform conservation has resulted in controversy about best management policies.

The state of approximate heather balance (annual growth increment being balanced by the combined losses from die-back and herbivore offtake, so that cover stays unchanged) is currently quite rare in Scotland, since besides the widespread regularly-burnt moorlands there are many moorlands that have recently been so heavily grazed as to become grasslands (Thompson *et al.*, 1995). However burning management of heathland is often less intensive in Scotland than England (Hester & Sydes, 1992; Yallop *et al.*, 2006), the former study finding that only c. 2% of heather moorland was burnt each year up to 1988; more recently the extent of long-unburnt heathland has probably increased in Scotland due to a decline in the profitability of

1 grouse shooting and shortages of manpower to carry out the necessary burning. Also
2 red deer doubled in number from the 1960s to the late 1980s in Scotland (Clutton-
3 Brock, 1999), so more of the annual growth of heather is being consumed in many
4 upland areas and hence there is less need for burning to keep heather short. Heather-
5 in-balance sites used to be valued as grazing for livestock and were probably more
6 extensive in past centuries, as shown by 1807-09 estate maps for west Aberdeenshire
7 (RHP 3897, National Archives of Scotland) having annotations such as “short heath,
8 pretty good grazing”.

9 A study monitoring continually both vegetation composition and grazing began
10 on heather moorland in north-east Scotland in 1969/1970, and provides some definite
11 information on long-term moorland compositional change. Some 32 sites being grazed
12 by cattle, sheep and red deer were established on a range of soil types at a range of
13 altitudes (Welch, 1984b); at 15 sites the monitoring lasted for 20 years at which time
14 the findings were reported in Welch & Scott (1995). Herbivore usage was found to
15 have been the main driver controlling trends in heather cover: at four sites with heavy
16 grazing heather declined sharply, at four sites with moderate grazing its cover changed
17 little, and at the other seven sites with lighter grazing the cover of heather increased.
18 Monitoring continues at most of the sites, but now a further assessment of the nature
19 and rate of long-term compositional change is being made for each of the three different
20 grazing-intensity states. Change from heathland to grassland at three sites with dry
21 soils was reported in Welch (2013) and the present paper reports observations over 43-
22 44 years at four sites not burned in that period but at which moderate grazing from large
23 herbivores kept heather cover and height checked.

24 Major disturbances to heathland like burning and heavy grazing have been
25 found to cause short-term increases in species richness (Harris *et al.*, 2011; Hancock &
26 Legg, 2012), so to counterbalance these increases a decline in species richness in little-
27 disturbed heathland could be expected during the period following post-fire recovery,
28 otherwise each burning cycle would produce a rise in biodiversity. So for the four sites
29 now reported the hypotheses to be tested are first that species number declines over
30 several decades when only moderate grazing occurs, and second that the flux in species
31 occurrence leads to the vegetation at the sites changing in its NVC affinity.

32 33 **Study sites**

1 The sites chosen for monitoring when the original study began in 1969/1970 were all
2 being grazed and with vegetation not in the initial phase of recovery after burning. This
3 was ascertained from aerial photographs taken in the early 1960s and from consultation
4 with local farmers, gamekeepers and owners. All four of the sites now reported are
5 situated in the eastern Grampians, with altitudes ranging between 107 m and 701 m
6 (Table 1 - site codes are retained from Welch (1984b)). The sites lie 25 to 70 km from
7 the coast (Fig. 1), so have a hemi-oceanic climate; for the closest meteorological
8 stations, Aboyne (207 m altitude) and Braemar (340 m altitude), respectively 10 km
9 distant to site D2 and 6-13 km distant to sites L1, L2 and O2, averages for the 1981-
10 2010 period were: January mean temperature 2.5 and 1.5 deg. C, July mean temperature
11 14.4 and 13.1 deg. C, annual days air frost 86 and 102, and annual rainfall 780 and 932
12 mm.

13 The soils of all four sites are derived from drift, and at the start of the study
14 ranged in pH from 3.8 to 5.3 (Table 1). Site D2 was well drained with a podsol soil, L2
15 was wetter with a peaty gley soil, and sites L1 and O2 had brown earths richer in
16 cations. Initially *Calluna* was dominant at sites D2, L1 and L2 as a carpet with low
17 height, but at the highest-altitude site, O2, *Calluna* occurred only in low patches, with
18 grasses prominent both within and between the patches.

19 Grazing management and type differed between sites (Table 1). At site D2
20 there was a large tract of heather moorland over which the sheep flock could graze at
21 will, but the monitored ground was quite near a gate through which livestock were
22 brought onto the moorland from improved pasture, and sometimes the gate was left
23 open allowing the pasture and moorland to be grazed in tandem. The other three sites
24 were in a block of uplands some 200 square kilometres in area that had no improved
25 grassland. Sheep flocks were grazed there from May to October each year, and red
26 deer were present year-round; they mostly utilised sites L1 and L2 during the winter
27 months November to April and moved up to higher ground in summer. Site O2
28 attracted considerable use from sheep despite its high altitude, and usage by red deer
29 was only sporadic although year-round.

30 Definite dates for when the four sites were last burnt are not available.
31 However the upland containing sites L1, L2 and O2 was being managed primarily as a
32 grouse moor in the 1950s and 1960s, with all lower ground being periodically burnt.
33 Hence L1 and L2 are likely to have been burnt in the period 15 to 30 years before the
34 observations began; the 1960s aerial photographs merely indicate that any burning was

1 not recent either at them or site O2. At site D2 the moorland had long been primarily
2 managed for a winter grazing for sheep, its owner believing in 1970 that it had not been
3 burnt for over 50 years and many old heather bushes were present then despite the low
4 sward height (Welch & Kemp, 1973).

6 **Methods**

7 The four sites were set up within tracts of relatively homogenous vegetation, and were
8 0.5-1.0 ha in extent. Within each site eight 15 m x 1 m permanent monitoring plots
9 were laid out; measurements on herbivore occupancy were made within the plots and
10 measurements on vegetation alongside the plots. Monitoring began at L1, L2 and O2 in
11 summer 1969 and at D2 in summer 1970. For this paper the final recordings were
12 obtained in 2013 and 2014, although monitoring continues.

13 Occupancy of cattle, sheep, red deer, hares + rabbits, and red grouse was
14 assessed separately, by collecting all dung newly deposited on the plots at 3-week
15 intervals and measuring its volume from the water displaced in a cylinder. This was
16 done for the first seven years of the study; thereafter volume equivalents were estimated
17 from the standing crop of dung present in April and September each year using a six-
18 point index scale: e.g. scale points 3 and 5 for sheep were assigned for 12 to 30 and 60
19 to 180 pellet groups respectively lying in the eight plots, and were deemed to contribute
20 14.5 and 83 ml m² of dung respectively. To produce the yearly totals of herbivore
21 occupancy (Fig. 2), totals for the five types were added, the volume for cattle being first
22 divided by 1.8 to allow for its low dry-matter content (Welch, 1982).

23 *Calluna* shoot utilisation and height were recorded at 16 permanent positions, in
24 two 1-m² squares per plot. For utilisation the percentage of the main shoots present that
25 had been browsed was assessed in each 1-m² position on a 4-point index scale and then
26 averaged from the 16 assessments; recording was done each September and also each
27 April, giving a maximum estimate at the end of winter before new growth started.
28 Height was recorded each September by 10 spot measures at each permanent position, a
29 mean being obtained from the 160 measures. The annual means for *Calluna* utilisation
30 and height during the whole study period are shown in Fig. 2.

31 Plant cover was estimated by point-quadrat recording mostly at two or three-
32 year intervals. A 10-pin frame 1 m long was placed in 10 positions alternately parallel
33 and normal to the long axes of the monitoring plots and 1 m apart, giving 800 points
34 per site. The pins were held vertically, and for each pin every species contacted was

1 recorded. Recordings were made between late June and the start of August, the timing
2 at each site being kept within a few days of its initial date.

3 For a basic assessment of change in vegetation composition (Fig. 3), the species
4 were grouped according to type: bryophytes, lichens, ericoids (*Calluna*, *Erica*,
5 *Vaccinium*), unpalatable graminoids (*Juncus*, *Molinia*, *Nardus*, *Trichophorum*) and
6 graminoids-herbs (all other angiosperms). A group was recorded for a pin if any
7 member species was hit. To examine the behaviour of individual main species, those
8 with cover exceeding 10% in at least one recording, the first step was regression against
9 time of their cover in all recordings, so species for which time explained a significant
10 part of cover change were recognised. Then for these reactive species, the directions of
11 change in all 8 plots at each site were compared to the overall site change. Next for all
12 main species, counts were made of cover gains and losses for all intervals between
13 successive analyses, so the incidence of short-term direction reversals against overall
14 change could be calculated. To display the overall behaviour of these main species,
15 cover averages were calculated for two successive recordings at the start, middle and
16 end of observations, and are presented in Table 3, which also reports regression
17 significances and the incidences of reversal in change direction. New species and
18 species apparently lost from the sites were identified (Tables 4 and 5), and changes in
19 species richness are presented in Figs. 4a and 4b, respectively of the total number of
20 species encountered in 800 points and the mean number of species hit at a single point.

21 The affinity of the four moorlands to NVC types in the British National
22 Classification (Rodwell *et al.*, 1992) was assessed using TABLEFIT (Hill, 1996). This
23 was done both for the composition of the sites in year 1 of the observations and for their
24 final composition in year 43/44. When all species were used in the assessments there
25 was a long tail of species that had negligible cover and were only intermittently
26 recorded, which tended to make the vegetation fit more species-rich NVC types. So
27 further assessments were made including only species with mean cover greater than 1%
28 in the diagnoses.

29 Nomenclature follows Stace (2010) for vascular plants, Smith (2006) for
30 mosses, Paton (1999) for liverworts, and Purvis *et al.* (1992) for lichens. However
31 *Hypnum cupressiforme* possibly includes other segregate species from the complex so
32 named by Smith (1978).

34 **Results**

1 *Vegetation composition*

2 Vegetation composition reflected the differences in soil type, sites D2 and L2 being
3 poor in species, whereas sites L1 and O2 were quite rich in species especially
4 dicotyledonous ones (Table 2). Grasses particularly *Agrostis capillaris* and *Festuca*
5 *ovina* had greater cover at the latter two sites. The main mosses also differed between
6 sites, with *Pleurozium schreberi* prominent at the two base-poor sites and *Hylocomium*
7 *splendens* prominent at L1 and O2. For all four sites, the mean number of dicots and
8 lichen species present in individual recordings was low compared to the total observed
9 in all recordings (Table 2), many of these species having mean cover less than 1% and
10 only being recorded intermittently.

11

12 *The grazing received and its impact*

13 Herbivore occupancy was greater in most years at sites L1 and L2 than sites D2 and O2
14 (Fig. 2). At L1 and L2 some variability resulted from the extent to which deep snow on
15 nearby higher ground brought down red deer to graze the sites in winter. At site D2
16 sheep were the only large herbivore until 2002, when cattle grazing began after the
17 farm lease changed. The sharp reduction in occupancy here from 1988/89 onwards was
18 associated with a run of mild winters during which the sheep could utilise grasslands
19 elsewhere on the farm; it was paralleled at D2 by a fall in *Calluna* utilisation and a
20 steady rise in *Calluna* height (Fig. 2). At the other three sites *Calluna* height rose more
21 gradually and by less in total amount, by 5 cm at site O2, 7 cm at L1 and 11 cm at L2
22 (Table 1); for 44-year periods these height increments are minor compared to the 25-cm
23 rises expected over 20 years on many moorlands managed on burning rotations for
24 grouse shooting.

25 At site O2 the combined occupancy from red deer, sheep and mountain hares
26 was less than half as great as at the nearby L1 and L2 sites, which probably resulted
27 from its more exposed situation and higher altitude (Table 1). But *Calluna* percentage
28 utilisation was little different from that at L1 and L2, reflecting the year-round presence
29 of mountain hares and their year-round preference for grazing on *Calluna*. In contrast,
30 the May-October presence of sheep at sites L1 and L2 results in little utilisation of
31 *Calluna* since they prefer to graze grasses and herbs at this time of year. The small
32 increase in *Calluna* height at O2 during the study also resulted from its smaller annual
33 increment there (Table 1), and the browning or die-back of the bushes observed in some
34 years after severe winters.

1

2 *Changes in vegetation composition*

3 The ericoid species group, with *Calluna* its main species, stayed dominant at the base-
4 poor sites D2 and L2 throughout the study and showed only minor variations in cover
5 (Fig. 3). The graminoids-herbs group had initially only half the cover of ericoids at
6 these sites and lost cover erratically during the study, its final contribution being 26% at
7 D2 and just 16% at L2. At both these base-poor sites bryophytes were abundant and
8 increased, so latterly they formed a nearly continuous carpet below the *Calluna* canopy.
9 At sites L1 and O2 with richer soils graminoids-herbs initially had more total cover
10 than ericoids, but gradually lost cover; at L1 this probably resulted from the increase in
11 *Calluna* height to 21 cm in 2013 (Table 1). Unpalatable graminoids had substantial
12 cover only at site L2, and declined sharply there, their main species (*Juncus squarrosus*
13 and *Nardus stricta*) being constrained by the increasing height of *Calluna*. Lichens
14 were rare at L1, L2 and O2, never exceeding 2% cover, and are only shown in Fig. 3 for
15 site D2. Here they tolerated the sheep grazing and maintained substantial cover until
16 cattle began to use the site in 2002; they then suffered trampling damage and were
17 reduced to 4% cover by 2010.

18 *Calluna* and some other major individual species changed little in cover during
19 the study, but significant declines were experienced by 22 of the 46 main species that
20 had cover > 10% in at least one recording (Table 3). On single plots the direction of
21 species change differed very rarely from the overall direction occurring at their site
22 (incidence of 3%), hence only site means are used here. The significantly-declining
23 species had on average final cover just one third of their initial cover, and only two of
24 them, *Agrostis capillaris* and *Festuca ovina* at site L1, retained more than 60% of their
25 initial cover. Despite many declines being highly significant over 43/44 years, none
26 occurred consistently between every successive recording without a reversal; the
27 species most consistently declining, *Hypnum cupressiforme* at L1, had 3 reversals in 14
28 intervals hence 21% reversal in Table 3. The stable species shown in bold in the table
29 had almost as many direction reversals as direction holds, as could be expected,
30 averaging 46% reversal of direction compared to 36% reversal of direction for species
31 changing significantly. Two cover increases, those of the hypnoid moss *Hylocomium*
32 *splendens* at the base-poor sites, were very great since its initial cover was negligible.
33 *Hylocomium* also increased markedly at the base-rich sites, partially replacing *Hypnum*
34 *cupressiforme* and *Pleurozium schreberi* in the moss carpet there. The only higher

1 plant showing a large gain in cover was *Deschampsia flexuosa* at site D2, where it
2 appeared to be replacing *Festuca ovina* in a niche utilising small gaps in the dense
3 heather sward.

4 New species were very few, mostly at site O2, and had attained very little cover
5 by the final observations (Table 4); at O2 they may well have been present sparsely
6 before the study began but not touched in the first two recordings. Lost species were
7 more numerous especially at site D2 (Table 5). The ones last recorded early in the
8 study or with average cover greater than 1%, are very likely to have become locally
9 extinct, but of the 23 species in Table 5 just three bryophytes and two lichens fall into
10 this group, four of them at site D2.

11 Total species number (Fig. 4a) and mean number of species hit per point (Fig.
12 4b) both fell slowly and rather erratically at sites D2, L1 and L2, with the sharpest fall
13 in species number at D2 and in species hit per point at L1. As a result, the vegetation is
14 now notably species-poor at these three sites. But at O2 species number has remained
15 high, being 66 and 64 in the first and last recordings respectively. This doubtless
16 reflected the low cover and height of *Calluna* here and consequent lack of competition
17 and shading, much of the fall in species hit per point occurring in the 40% of points that
18 lay within the *Calluna* patches. For sites D2, L1 and L2 there was a significant
19 difference ($P < 0.05$) in t tests between species number in the first three and last three
20 analyses, the declines in species number ranging from 22 to 36%.

21

22 *Affinities of the moorlands*

23 The top goodness-of-fit values obtained for both initial and final compositions of the
24 four sites mostly rated good (70-79%) or very good (80% plus) in TABLEFIT (Table
25 6). Including all species in the analyses gave somewhat poorer fit than when species
26 with less than 1% cover were omitted. Initially only site D2 had its closest affinity to a
27 heathland type (*Calluna vulgaris-Erica cinerea* heath, NVC H10) rather than a
28 grassland type. But due to the decline and loss of graminoids and herbs over the 43/44
29 years of the study (Tables 3 and 5) site L2 also came to have best allegiance to NVC
30 H10. The presence of *Leucobryum glaucum* at D2 and *Plagiothecium undulatum*,
31 *Rhytidiadelphus loreus* and *Sphagnum* spp. at L2 probably explains their affinities to
32 the rather moister NVC H18 (*Vaccinium myrtillus-Deschampsia flexuosa* heath) and
33 H21 (*Calluna vulgaris-Vaccinium myrtillus-Sphagnum capillifolium* heath) types.

1 At the two base-rich sites, L1 and O2, there was initially best fit to NVC
2 CG11a (*Festuca ovina-Agrostis capillaris-Alchemilla alpina* grass heath), the abundance
3 of *Alchemilla alpina*, initially with cover 8% at L1 and 17% at O2, explaining the
4 poorer fit then to NVC CG10a (*Festuca ovina-Agrostis capillaris-Thymus praecox*
5 grassland). At O2 species number remained high (Fig. 4a) and the best-fit community
6 remained CG11a. Species present at O2, and found by Rodwell *et al.* (1992) to occur
7 in CG11 but not in CG10, included *Anemone nemorosa*, *Carex bigelowii*,
8 *Coeloglossum viride*, *Polytrichum alpinum* and *Viola palustris*. For L1 the reduction in
9 cover of *Alchemilla alpina* to only 0.4% in 2012, thereby causing its omission in the
10 TABLEFIT assessments that had species with < 1% cover excluded, contributed to the
11 best fits for that class changing to NVC U4a (*Festuca ovina-Agrostis capillaris-Galium*
12 *saxatile* grassland, typical sub-community).

13

14 **Discussion**

15 The major findings of the study were the decline in cover of many graminoid and herb
16 species at the three sites where *Calluna* remained dominant for over 40 years (Fig. 3,
17 Table 3), the fall in species richness at these sites (Fig. 4a) and the frequent occurrence
18 of short-term reversals to the overall direction of changes in cover and species richness
19 (Table 3, Fig. 4a). The slowness of the changes and their short-term fluctuation make it
20 clear that long-term consistent measurements are needed to assess heathland
21 composition change after the initial phase of post-fire recovery.

22 Fluctuations in cover arise from many causes such as damage from snow-lie,
23 disease, drought, frost incidence, growing conditions in the weeks before the analyses
24 with bryophytes for example attaining more cover in wet than dry years, and the
25 resulting variability can easily obscure any slow changes over short periods. For
26 species richness there is also an intrinsic problem caused by the long “tails” of species
27 having little cover in many plant communities; at the study sites a quarter to a third of
28 all the species present had <1% cover, increasing the chance of the point quadrats
29 missing them. But given that the present monitoring continued for over 40 years, it
30 seems very likely that the two conclusions on graminoid and herb decline and on
31 species impoverishment are a reality in sites with a constant high *Calluna* cover.

32 The decline in species richness was greatest at site D2 and correlated with an
33 increase in *Calluna* height. This site had long been grazed quite heavily by sheep,
34 keeping sward height down to c. 8 cm (Fig. 2). But a decrease in grazing occupancy in

1 the late 1980s let *Calluna* height increase to 15 cm and coincided with a fall in the
2 cover of graminoids-herbs (Fig. 3). Species lost, never recorded after 1990, included
3 several bryophytes and lichens (Table 5) and also *Dactylorhiza maculata*, *Gymnadenia*
4 *conopsea*, *Polygala serpyllifolia* and *Poa pratensis* too rare in the first twenty years of
5 monitoring to appear in Table 5. Although bryophytes as a group gained cover at D2
6 (Fig. 3) due to a spread of pleurocarpous mosses especially *Hylocomium splendens*
7 (Table 3), the number of bryophyte species declined. Total species number averaged
8 38 for the first three recordings but then fell as *Calluna* height rose (Fig. 4a). That
9 diversity had remained moderately high despite perhaps 50 years having elapsed
10 without burning, is an important result that shows it is the combination of *Calluna*
11 dominance and height that impacts on graminoids and herbs.

12 Sites L1 and L2 also remained *Calluna*-dominant (Fig. 3, Table 3), the greatest
13 change being the decline in unpalatable graminoids especially *Nardus stricta* at L2.
14 The impact of taller *Calluna* swards on *Juncus squarrosus* and *Nardus* at the original
15 study sites was reported in Welch (1986), where for *Nardus* substantial declines
16 occurred when the product of *Calluna* height (cm) and cover % exceeded 1000, e.g. 18
17 x 55% or 20 x 50%; the trends at L2 since 1983 were consistent with these earlier
18 findings. Other big changes in cover at L1 and L2 came from interplay between
19 bryophytes, notably *Hypnum cupressiforme* being ousted by *Hylocomium splendens* in
20 the moss carpets. At site L1 five graminoid and herb species showed large declines
21 (Table 3), explaining the sharp fall in species hit per point there (Fig. 4b). These
22 species were not lost from the site and hence species number declined only modestly
23 (Fig. 4a).

24 Site O2 stayed rich in species throughout the study (Fig. 4) and its close affinity
25 to NVC *Festuca ovina*-*Agrostis capillaris*-*Alchemilla alpina* grassland remained
26 unchanged (Table 6). Evidently the cover and height of *Calluna*, ranging from 29 to
27 41% and 9 to 17 cm respectively over the 44-year period (Tables 1 & 3, Fig. 2), was
28 insufficient to cause more than a minor decline in graminoids-herbs cover (Fig. 3) and
29 only three bryophytes that had tiny cover were classed as lost during the study (Table
30 5). That species number stayed high at O2 gives a control that implies the declines in
31 species number at the other sites were real and not caused by method changes or
32 recorder failure to observe species.

33 For all four sites just five species were new, entering after observations began
34 (Table 4). In contrast there were 23 new species observed by identical recording

1 methods over a similar period at three sites where *Calluna* stands became grasslands
2 (Welch, 2013). Moreover at the present sites with *Calluna* checked but still dominant
3 the number of species lost far exceeded new species, with 20 altogether for D2, L1 and
4 L2 (Table 5), and another 16 angiosperm species were probably lost but not given in
5 Table 5 having less than four occurrences; these included *Achillea ptarmica*, *Alchemilla*
6 *filicaulis* and *Succisa pratensis* besides the two orchids already mentioned for D2. This
7 indicates that conditions in taller dense *Calluna* swards are hostile for many
8 angiosperms that are otherwise adapted to the local climate and soil conditions. It can
9 be concluded that at sites with *Calluna* dominant and over 15 cm tall, species richness
10 will slowly decline to a very low level unless some major event damages the heather,
11 e.g. attack by heather beetles (*Lochmaea suturalis*), fire, or heavy grazing.

12 Similar species poverty was reported for the moorland community called
13 *Callunetum vulgaris* by McVean & Ratcliffe (1962), now considered a main component
14 of NVC H10 heath (Rodwell *et al.*, 1991). In 4-m² quadrats the mean number of
15 species was just 17 for *Callunetum vulgaris*, lower than for any other of the moorland
16 and grassland communities described by McVean & Ratcliffe in the Scottish Highlands.
17 Very low numbers of species were found in related *Calluna* moorland (Hobbs &
18 Gimingham, 1984; Harris *et al.*, 2011), though the communities in the Peak District
19 studied in the latter paper were rather moister than the present four sites. In both these
20 studies declines of graminoid and herb species were observed after burning, being
21 inversely related to vegetation height (Harris *et al.*, 2011). However no study on
22 heathland botanical composition has yet reported changes through an entire post-fire
23 succession. Also change in NVC affinity such as occurred at site L2 has not
24 previously been demonstrated for moderately grazed, unburnt moorland in Britain.

25 Species of conservation concern in Britain occurred at sites D2, L2 and O2.
26 Cheffings & Farrell (2005) class *Coeloglossum viride* (O2) as “Vulnerable”, the third-
27 highest threat category in the IUCN Scheme, and *Genista anglica* (D2 and L2) is “Near
28 Threatened”, the fourth-highest category. Also *Potentilla crantzii* (O2) is classed as
29 “Nationally Scarce”. British NVC plant communities have not been categorised on
30 rarity or threat of decline, but two of the present sites do have conservation value in
31 their communities being relatively scarce. NVC U4a and NVC CG11a grasslands have
32 quite limited distribution (Rodwell *et al.*, 1992) and our particular communities at L1
33 and O2 with abundant *Calluna* are not given a separate status in NVC that they
34 probably merit. Opinion is divided on how best to conserve heathlands (Newton *et al.*,

1 2009), with managers e.g. English Nature often believing that burning has resulted in
2 moorland being in “unfavourable” condition (Stewart *et al.* (2005), but researchers e.g.
3 Bartoleme *et al.* (2005) report that burning is more effective than grazing alone at
4 maintaining diversity. The present study does show that grazing alone is insufficient to
5 maintain species richness in many lower-altitude situations, giving support to the
6 conclusions of Harris *et al.* (2011) that in them prescribed burning should be regularly
7 employed. However, heavy grazing that caused a major decline of *Calluna* at another
8 site in NE Scotland did result in species diversity rising (Welch, 2013).

9 The present long-term observations have provided no evidence that
10 thermophilous plants with a Southern distribution in Britain are moving north or to
11 higher altitudes, although the closed nature of the swards and lack of bare ground
12 clearly reduce the chances of colonisation. Also the observed trends do not give
13 support to either explanation suggested by Maskell *et al.* (2010) for the association of
14 declines in species richness with increased nitrogen deposition, that 1) enhanced growth
15 of dominants suppresses subordinate species, or 2) acidification or direct N toxicity
16 damages some species. Relevant to 1), the annual growth increment of *Calluna* fell at
17 three of the present sites after 1990 compared to its initial average; the exception was
18 high-altitude site O2, for which the most likely explanation was higher summer
19 temperature in recent years than before 1990. Relevant to 2), Maskell *et al.* showed a
20 correlation between increased N deposition and lower cover of several herbs and
21 mosses including *Hylocomium splendens*, but that moss increased very sharply at all the
22 present sites. With intermediate levels of nitrogen deposition in upper Deeside (14-20
23 kg ha⁻¹ recently estimated for nearby Glas Maol (Pearce *et al.*, 2003; Armitage *et al.*,
24 2011), and N deposition rates having remained fairly constant over the past forty years,
25 the clear gains of *Hylocomium splendens* at the expense of *Hypnum cupressiforme* seem
26 not to be caused by N deposition.

27

28 **Conclusion**

29 The main factors affecting the floristics of heathland once the initial recovery after
30 burning has occurred, are the grazing received and the sward height and dominance of
31 *Calluna*. The hypothesis that species diversity declines in the long term during the
32 succession stage after initial post-fire recovery under moderate grazing was shown
33 correct, but qualified by this occurring only when *Calluna* swards reach heights of 15
34 cm or more. The second hypothesis that the changes in composition in heathlands

1 during a prolonged post-fire stage can be sufficiently great as to change NVC affinity
2 was shown true at two of the four sites, due to declines in number and cover of herbs
3 and graminoids. To maintain floral diversity in heathlands there needs to be regular
4 burning, so that the succession stage when *Calluna* sward heights exceed 20 cm is
5 minimised.

7 **Acknowledgements**

8 I am grateful to the estate owners and their farmers for permission to visit the sites and
9 frequent conversations over the years. Many staff of the former Banchory Research
10 Station of the Institute of Terrestrial Ecology assisted with the fieldwork early in the
11 study, then David Scott and more recently my wife, Muriel Welch, have patiently
12 recorded my point-quadrat observations. Dr Ruth Mitchell of the James Hutton
13 Institute, Aberdeen, and Dr Colin Legg, Edinburgh University School of Geo Sciences,
14 commented on earlier versions of this paper, and Dr Micheline Sheehy Skeffington and
15 two anonymous referees have made valuable improvements.

18 **References**

- 20 Armitage, H. F., Britton, A. J., Woodin, S. J. & van der Wal, R. 2011. Assessing the
21 recovery potential of alpine moss-heath: reciprocal tranplants along a nitrogen
22 deposition gradient. *Environmental Pollution*, **159**: 140-147.
- 24 Averis, A. M., Averis, A. B. G., Birks, H. J. B., Horsfield, D., Thompson, D. B. A. &
25 Yeo, M. J. M. 2004. *An illustrated guide to British upland vegetation*. Peterborough:
26 JNCC.
- 28 Bartolome, J., Plaixats, J., Fanlo, R & Boada, M. 2005. Conservation of isolated
29 Atlantic heathlands in the Mediterranean region: effects of land-use changes in the
30 Montseny biosphere reserve (Spain). *Biological Conservation* **122**: 81-88.
- 32 Cheffings, C. & Farrell, L. (eds.) 2005. *The Vascular Plant Red Data List for Great*
33 *Britain*. Peterborough: JNCC.
- 35 Clutton-Brock, T. H. 1999. *Variation in red-deer density in the Highlands*.
36 Information & Advisory Note No. 100, Scottish Natural Heritage, Inverness.
- 38 Hancock, M. H. & Legg, C. J. 2012. Diversity and stability of ericaceous shrub cover
39 during two disturbance experiments; one on heathland and one in forest. *Plant*
40 *Ecology & Diversity* **5**: 275-287.

- 1 Harris, M. P. K., Allen, K. A., McAllister, H. A., Eyre, G., Le Duc, M. G. & Marrs, R.
2 H. 2011. Factors affecting moorland plant communities and component species in
3 relation to prescribed burning. *Journal of applied Ecology* **48**: 1411-1421.
4
- 5 Hester, A. J. & Sydes, C. 1992. Changes in the burning of Scottish heather moorland
6 since the 1940s from aerial photographs. *Biological Conservation* **60**: 25-30.
7
- 8 Hill, M. O. 1996. *TABLEFIT V1.0, for identification of vegetation types*. Huntingdon:
9 Institute Terrestrial Ecology.
10
- 11 Hobbs, R. J. & Gimingham, C. H. 1984. Studies on fire in Scottish heathland
12 communities. II. Post-fire vegetation development. *Journal of Ecology* **72**: 585-610.
13
- 14 Maskell, L. C., Smart, S. M., Bullock, J. M., Thompson, K. & Stevens, C. J. 2010.
15 Nitrogen deposition causes widespread loss of species richness in British habitats.
16 *Global Change Biology* **16**: 671-679.
17
- 18 McVean, D. N. & Ratcliffe, D. A. 1962. *Plant Communities of the Scottish Highlands*.
19 Monographs of the Nature Conservancy No 1. London, H. M. S. O.
20
- 21 Newton, A. C., Stewart, G. B., Myers, G., Diaz, A., Lake, S., Bullock, J. M. & Pullin,
22 A. S. 2009. Impacts of grazing on lowland heathland in north-west Europe. *Biological*
23 *Conservation* **142**: 935-947.
24
- 25 Paton, J. A. 1999. *The liverwort flora of the British Isles*. Colchester: Harley Books.
26
- 27 Pearce, I. S. K., Woodin, S. J. & van der Wal, R. 2003. Physiological and growth
28 responses of the montane bryophyte *Racomitrium lanuginosum* to atmospheric nitrogen
29 deposition. *New Phytologist* **160**: 145-155.
30
- 31 Purvis, O. W., Coppins, B. J., Hawksworth, D. L., James, P. W. & Moore, D. M. 1992.
32 *The lichen flora of Great Britain and Ireland*. London: The British Museum (Natural
33 History).
34
- 35 Rodwell, J. S., ed. 1991. *British Plant Communities. 2. Mires and heaths*. Cambridge:
36 Cambridge University Press.
37
- 38 Rodwell, J. S., ed. 1992. *British Plant Communities. 3. Grassland and montane*
39 *communities*. Cambridge: Cambridge University Press.
40
- 41 Ross, L. C., Woodin, S. J., Hester, A. J., Thompson, D. B. & Birks, H. J. 2012. Biotic
42 homogenization of upland vegetation patterns and drivers at multiple spatial scales over
43 five decades. *Journal of Vegetation Science* **23**: 755-770.
44
- 45 Smith, A. J. E. 1978. *The Moss Flora of Britain and Ireland*. Cambridge: Cambridge
46 University Press.
47
- 48 Smith, A. J. E. 2006. *The Moss Flora of Britain and Ireland*. Cambridge: Cambridge
49 University Press.
50

- 1 Stace, C. A. 2010. *New Flora of the British Isles*. 3rd edition. Cambridge: Cambridge
2 University Press.
3
- 4 Stewart, G. B., Coles, C. F. & Pullin, A. S. 2005. Applying evidence-based practice in
5 conservation management: lessons from the first systematic review and dissemination
6 projects. *Biological Conservation* **126**: 270-278.
7
- 8 Thompson, D. B. A., MacDonald, A. J., Marsden, J. H. & Galbraith, C. A. 1995.
9 Upland heather moorland in Great Britain: a review of international importance,
10 vegetation change and some objectives for nature conservation. *Biological*
11 *Conservation* **71**: 163-178.
12
- 13 Vandvik, V., Heegaard, E., Maren, I. E. & Aarrestad, P. A. 2005. Managing
14 heterogeneity: the importance of grazing and environmental variation on post-fire
15 succession in heathlands. *Journal of applied Ecology* **42**: 139-149.
16
- 17 Welch, D. 1982. Dung properties and defecation characteristics in some Scottish
18 herbivores, with an evaluation of the dung-volume method of assessing occupancy.
19 *Acta Theriologica* **27**: 191-212.
20
- 21 Welch, D. 1984a. Studies in the grazing of heather moorland in north-east Scotland.
22 III. Floristics. *Journal of applied Ecology* **21**: 209-225.
23
- 24 Welch, D. 1984b. Studies in the grazing of heather moorland in north-east Scotland. I.
25 Site descriptions and patterns of utilisation. *Journal of applied Ecology* **21**: 179-195.
26
- 27 Welch, D. 1986. Studies in the grazing of heather moorland in north-east Scotland. V.
28 Trends in *Nardus stricta* and other unpalatable graminoids. *Journal of applied Ecology*
29 **23**: 1047-1058.
30
- 31 Welch, D. 2013. The floristics of contrasting grazed-down Scottish moorland sites
32 initially dominated by heather (*Calluna vulgaris*). *New Journal of Botany* **3**: 169-177.
33
- 34 Welch, D. & Kemp, E. 1973. A Callunetum subject to intensive grazing by mountain
35 hares. *Transactions of the Botanical Society of Edinburgh* **42**: 89-99.
36
- 37 Welch, D. & Scott, D. 1995. Studies in the grazing of heather moorland in north-east
38 Scotland. VI. 20-year trends in botanical composition. *Journal of applied Ecology* **32**:
39 596-611.
40
- 41 Yallop, A. R., Thacker, J. I., Thomas, G., Stephens, M., Clutterbuck, B., Brewer, T. &
42 Sannier, C. A. D. 2006. The extent and intensity of management burning in the English
43 uplands. *Journal of applied Ecology* **43**: 1138-1148.
44
45
46
47
48
49
50

1
2
3
4
5
6
7
8
9
10
11
12
13
14
15
16
17
18
19
20
21
22
23
24
25
26
27
28
29
30
31
32
33
34
35
36
37
38
39
40
41
42
43
44
45
46
47
48
49
50

Figure Captions

Fig. 1 Location of the four study sites and two meteorological stations (+, A = Aboyne, B = Braemar) within inset from a map of Scotland.

Fig. 2 Herbivore occupancy as measured by total dung deposited ($\text{ml m}^{-2} \text{yr}^{-1}$) for April-April periods, mean % *Calluna* shoot utilisation recorded in April at the end of these periods, and mean heights of *Calluna* recorded each September during the study, for the four sites.

Fig. 3 Changes in mean % cover for main species groups at the four sites. Key: red = ericoids, blue = bryophytes, green = graminoids-herbs, black = unpalatable graminoids, ochre = lichens.

Fig. 4a Change in total number of species number observed at recordings at the four sites. Key: black = D2, red = L2, blue = L1, green = O2.

Fig. 4b Change in mean number of species hit point in recordings at the four sites. Key: black = D2, red = L2, blue = L1, green = O2.

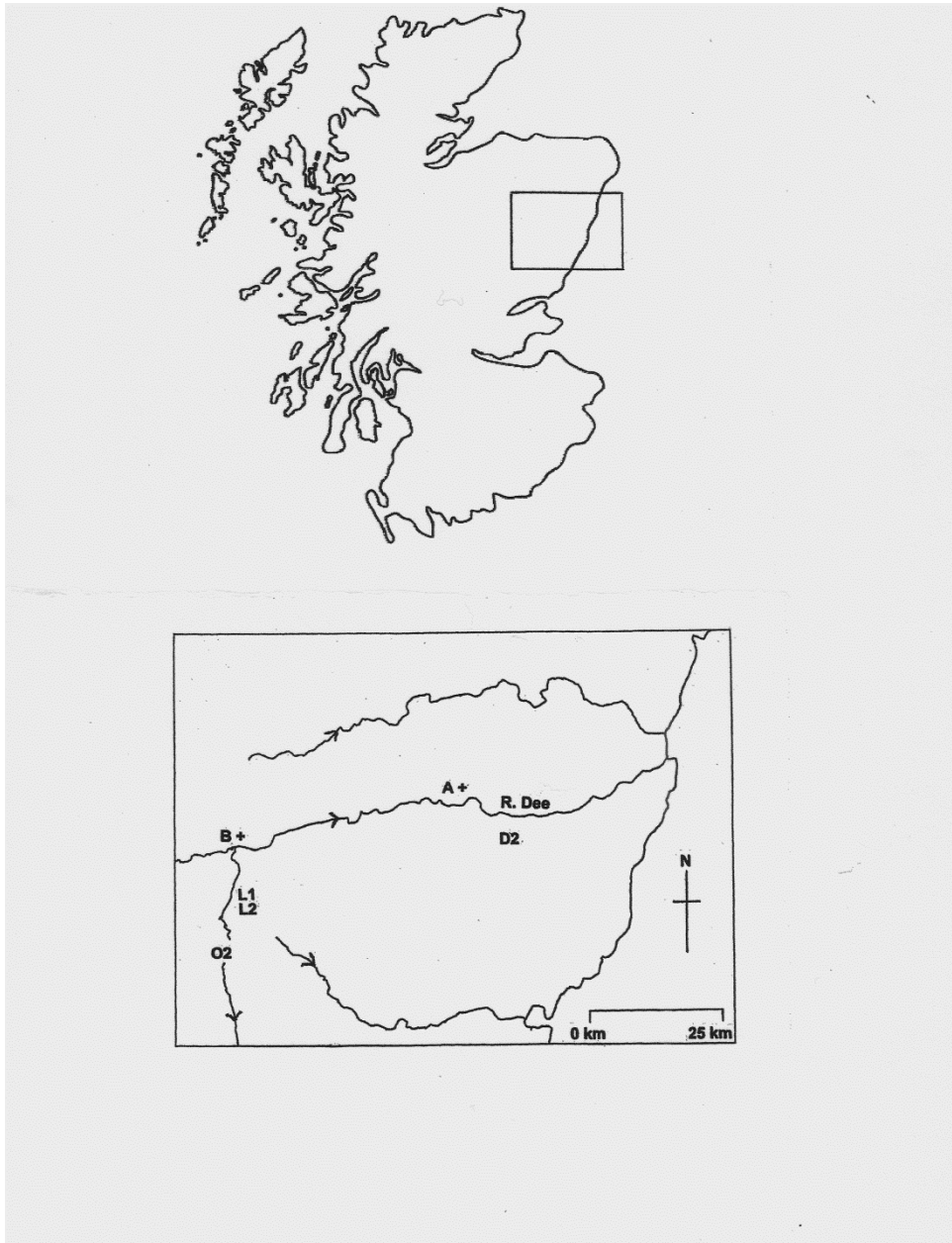
Table 1 Site information (soil data (means of eight plots) from measurements in autumn 1971; heather growth is the overall mean calculated from means measured in every year of the study and with a standard error based on year means; % cover, with standard errors based on mean cover in the eight plots; heather height, with standard errors based on mean heights in the eight plots).

	Site D2	Site L1	Site L2	Site O2
Location	Ennochie, Aberdeenshire	Newbigging, Aberdeenshire	Clunie Lodge, Aberdeenshire	Cairnwell Perthshire
Grid reference	NO627914	NO147851	NO140828	NO140772
Initial year observed	1970	1969	1969	1969
Altitude (m)	107	426	426	701
Topography	flat	8° W slope	1° N slope	5° E slope
Soil type	podsol	brown earth	peaty gley	brown earth
Initial pH	4.6	5.1	3.8	5.3
Extractable K [^]	14	12	9	11
Extractable Ca [^]	14	21	16	103
Grazing regime and situation	unrestricted, improved grassld rarely available	unrestricted, no access to improved grassld	unrestricted, no access to improved grassld	unrestricted, no access to improved grassld
Main herbivore	sheep	sheep	sheep	sheep
Subsidiary herbivores	cattle, rabbits	red deer, rabbits	red deer, mountain hares	mountain hares
Initial % cover in year 1				
<i>Calluna</i>	86±2	65±4	60±6	29±6
<i>Agrostis + Festuca</i>	27	98	16	68
Annual mean growth of <i>Calluna</i> shoots (cm)	3.5±0.1	3.9±0.1	4.0±0.1	2.5±0.1
Height <i>Calluna</i> (cm)				
Year 0	7.4±0.4	14.1±1.0	11.1±0.5	9.6±0.6
Year 21	16.2±1.3	16.7±0.9	19.0±1.3	15.0±0.6
Year 44	20.3±0.9	21.2±0.9	21.7±2.0	14.9±1.0

[^] expressed as mg dry weight 100 ml⁻¹

1
2
3
4
5
6
7
8
9

Fig. 1 Location of the four study sites and two meteorological stations (+, A = Aboyne, B = Braemar) within inset from a map of Scotland.



10
11
12
13
14
15
16
17

Table 2 Vegetation composition at the four sites, a) main species (i.e. species with overall mean cover > 20%) and b) mean and total species number, based on all point-quadrat recordings made during the 43/44 years of study. Standard errors are given for the means of species number.

a) main species

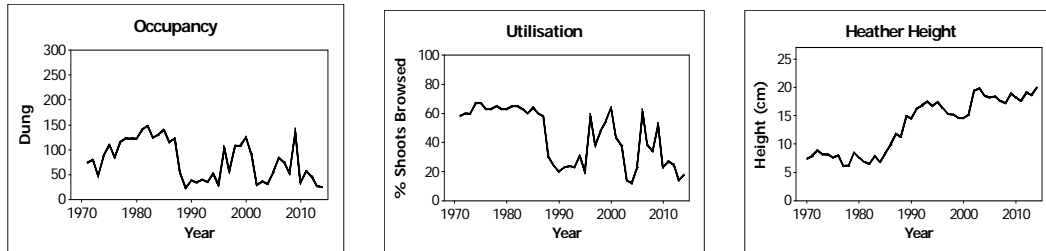
Site D2	Site L1
<i>Calluna vulgaris</i>	<i>Agrostis capillaris</i>
<i>Pleurozium schreberi</i>	<i>Calluna vulgaris</i>
	<i>Festuca ovina</i>
	<i>Hylocomium splendens</i>
Site L2	Site O2
<i>Calluna vulgaris</i>	<i>Agrostis capillaris</i>
<i>Deschampsia flexuosa</i>	<i>Calluna vulgaris</i>
<i>Hypnum cupressiforme</i>	<i>Deschampsia flexuosa</i>
<i>Pleurozium schreberi</i>	<i>Festuca ovina</i>
	<i>Hylocomium splendens</i>

b) species number

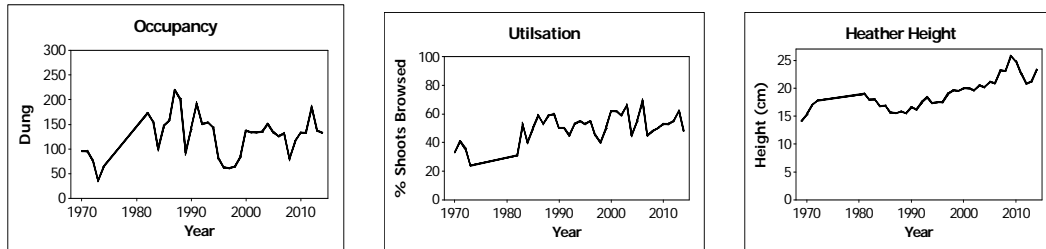
	Mean No. Species observed in all recordings over 43/44 years at sites				Total No. Species seen over 43/44 years at sites			
	D2	L1	L2	O2	D2	L1	L2	O2
Dicots	6.4±0.3	21.3±0.8	6.8±0.3	27.6±0.8	10	34	10	43
Monocots	9.9±0.3	9.8±0.2	11.0±0.3	18.4±0.2	14	11	14	23
Bryophytes	8.9±0.4	9.6±0.3	14.9±0.5	15.4±0.5	18	17	26	30
Monocots	4.7±0.4	1.6±0.3	2.1±0.2	3.3±0.3	12	5	5	11
All Species	30.1±1.2	42.3±1.1	34.8±1.6	64.6±1.3	54	67	55	107

1
2
3
4 **Figure 2** Herbivore occupancy as measured by total dung volume deposited ($\text{ml m}^{-2} \text{yr}^{-1}$) for April-April periods, mean % *Calluna* shoot utilisation recorded in
5 *April* at the end of these periods, and mean heights of *Calluna* swards recorded
6 each September during the study, for the four sites.
7
8
9

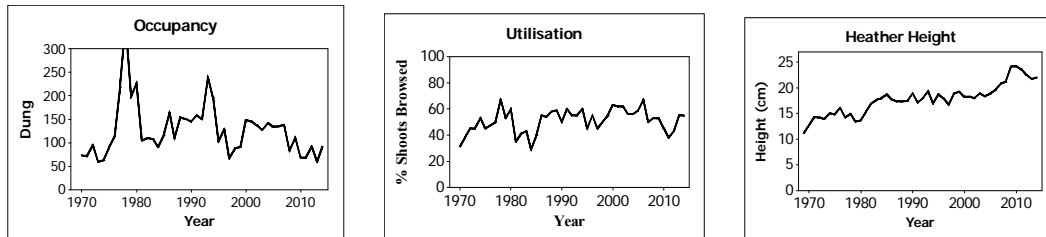
10 Site D2



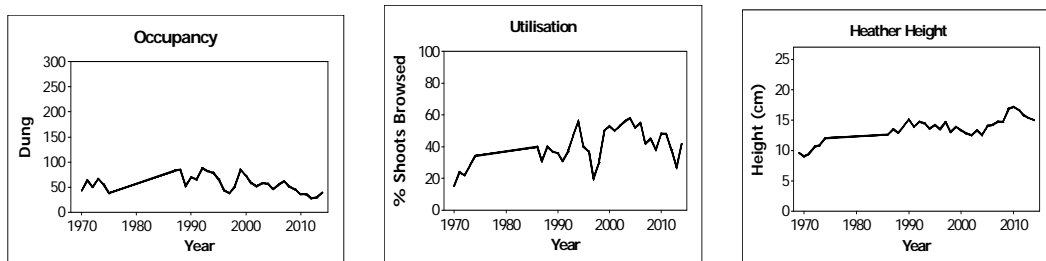
11
12
13 Site L1



14
15
16 Site L2

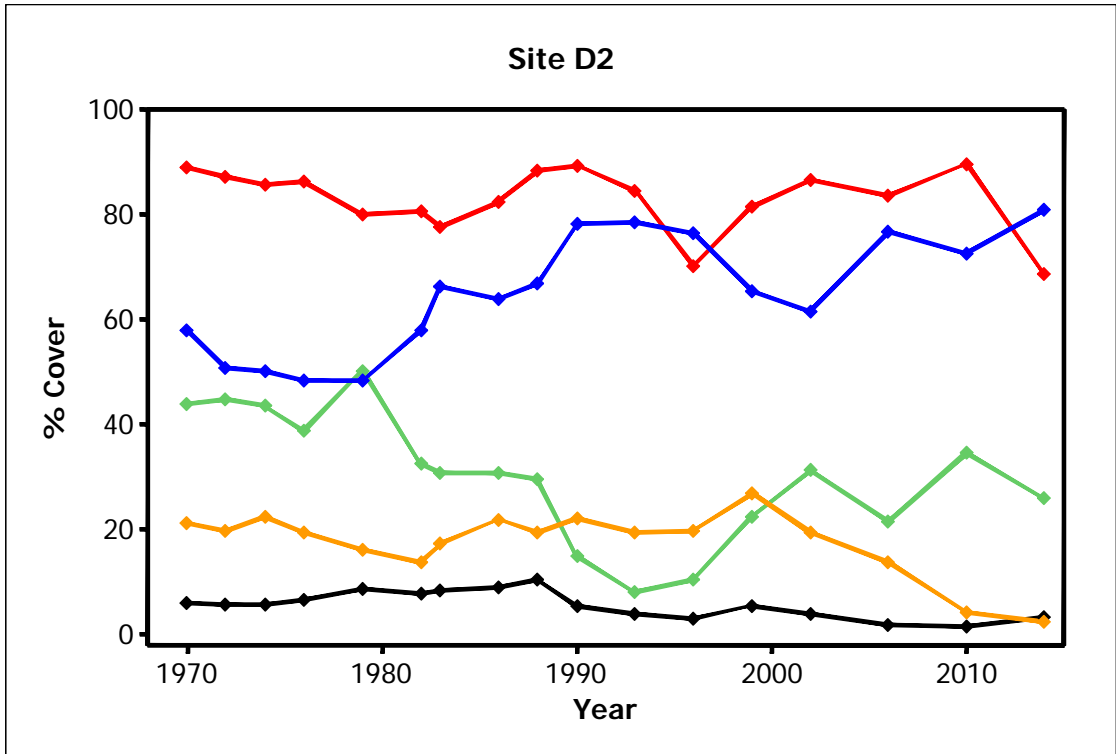


17
18
19 Site O2

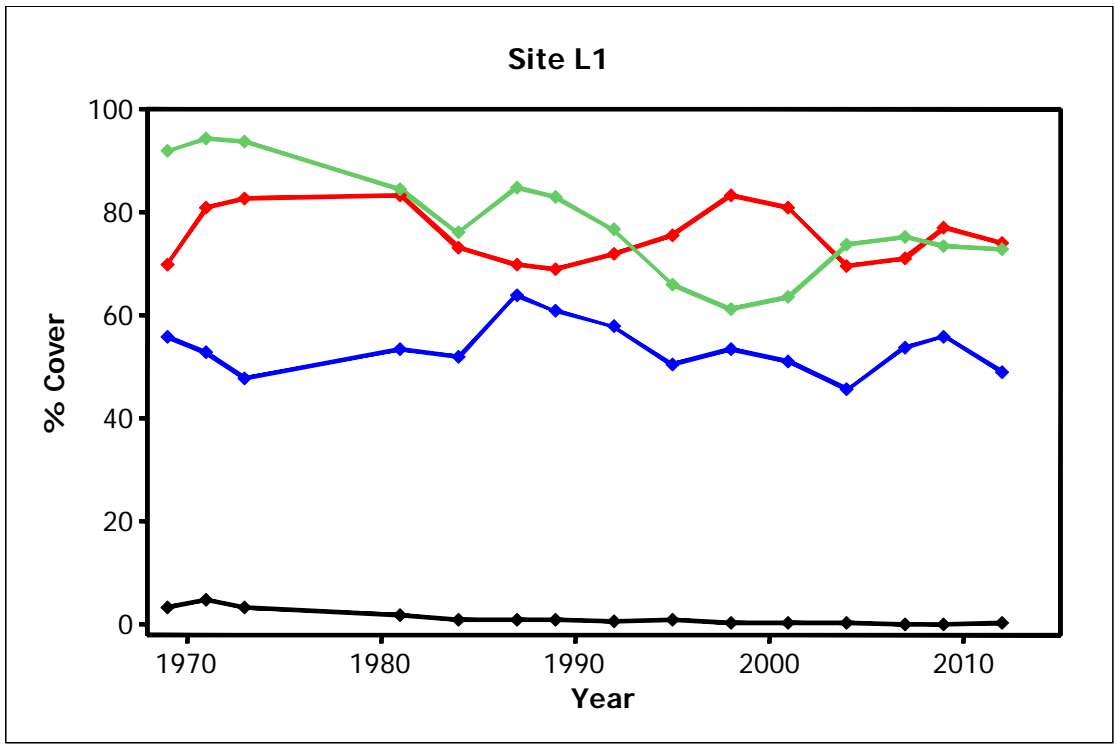


1
2
3
4
5
6
7
8

Figure 3 Changes in mean % cover for main species groups at the four sites.
Key: red = ericoids, blue = bryophytes, green = graminoids-herbs, black = unpalatable graminoids, ochre = lichens.

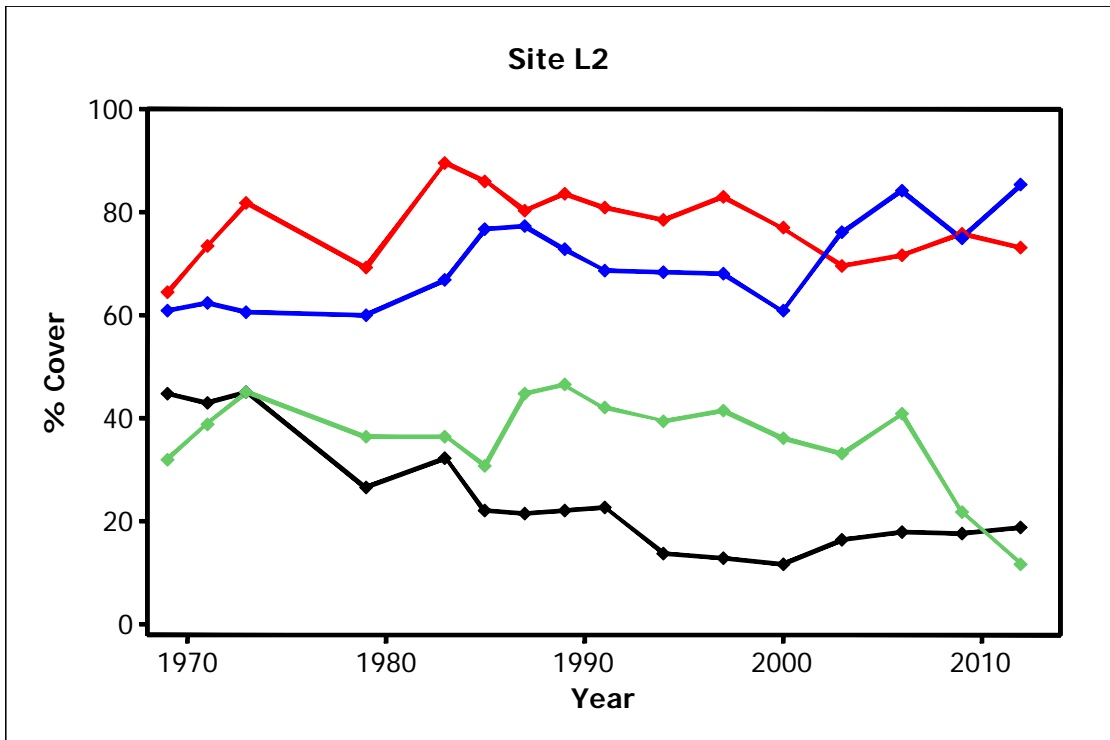


9
10
11

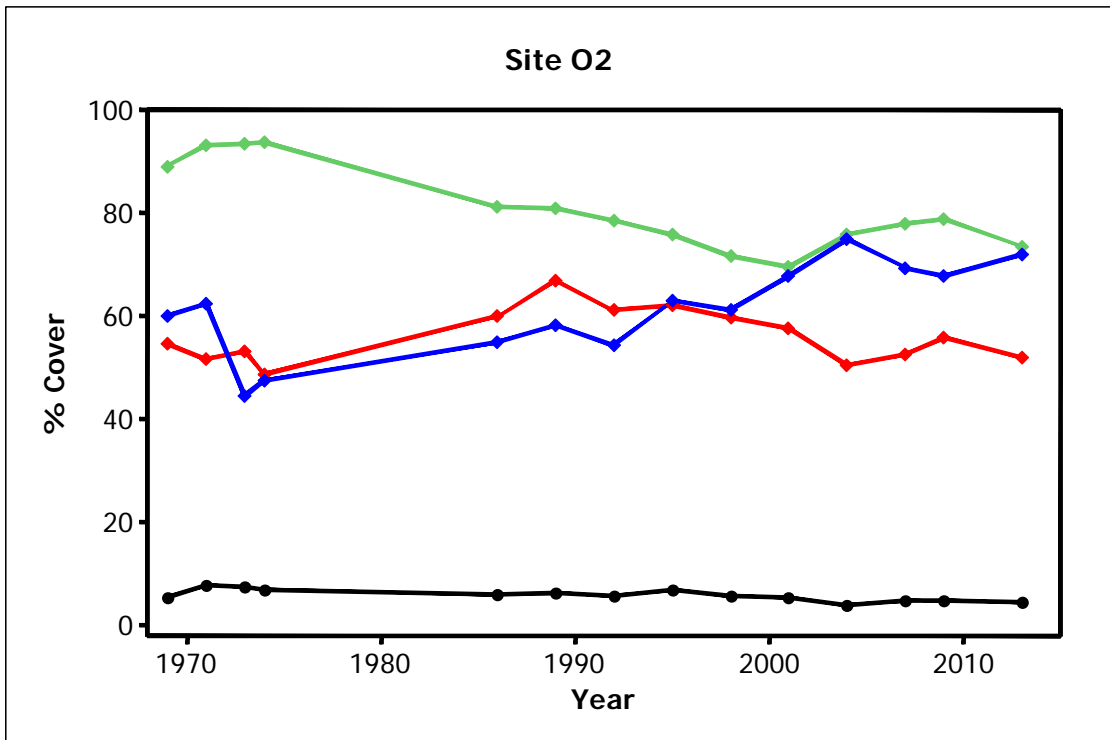


12

1
2
3
4



5
6
7
8



9
10
11
12

1
2
3
4 **Table 3** Change in cover of main species (those exceeding 10% cover in at least
5 one recording), as shown by mean cover at the start (years 0 and 2), middle (years
6 20 and 22/23) and final (years 40 and 43/44) of observations. Stable species not
7 having significant changes over time in linear regression are in bold; for other
8 species regression significances and direction are shown: *** $P<0.001$, ** $P<0.01$, *
9 $P<0.05$, + positive, – negative. For every species the far-right column gives %
10 occurrence in all recordings of reversals to overall direction of change.

	% Cover Start	% Cover Middle	% Cover Final	Change Significance	% Direction Reversals
Site D2					
<i>Calluna vulgaris</i>	84.4	85.9	78.8		44
<i>Hypnum cupressiforme</i>	9.8	2.1	14.5		38
<i>Leucobryum glaucum</i>	11.8	10.4	8.8		50
<i>Pleurozium schreberi</i>	34.0	65.1	35.1		50
<i>Cladonia impexa</i>	14.4	18.8	3.3		44
<i>Deschampsia flexuosa</i>	1.1	6.2	16.3	+ ***	38
<i>Hylocomium splendens</i>	0.1	3.4	26.3	+ ***	19
<i>Carex panicea</i>	10.9	0.7	0.7	– ***	31
<i>Erica cinerea</i>	12.6	4.4	0.2	– ***	31
<i>Festuca ovina</i>	22.0	2.1	10.0	– **	44
<i>Nardus stricta</i>	5.3	4.4	2.2	– *	50
Site L1					
<i>Calluna vulgaris</i>	71.4	66.5	73.4		43
<i>Galium saxatile</i>	15.9	16.8	16.2		43
<i>Rhytidiadelphus squarrosus</i>	9.5	13.6	8.5		50
<i>Vaccinium myrtillus</i>	5.6	7.4	6.7		36
<i>Hylocomium splendens</i>	16.5	18.8	32.3	+ ***	43
<i>Festuca ovina</i>	54.3	41.8	34.3	– ***	36
<i>Hypnum cupressiforme</i>	15.9	9.3	3.5	– ***	21
<i>Potentilla erecta</i>	16.6	8.6	7.9	– ***	36
<i>Anthoxanthum odoratum</i>	13.6	4.4	3.6	– **	36
<i>Erica cinerea</i>	8.4	6.6	3.3	– **	43
<i>Agrostis capillaris</i>	52.9	39.6	39.4	– *	29
<i>Carex pilulifera</i>	18.9	7.4	7.8	– *	29
<i>Pleurozium schreberi</i>	16.1	22.3	6.4	– *	36
Site L2					
<i>Calluna vulgaris</i>	65.5	81.6	73.7		53
<i>Deschampsia flexuosa</i>	18.1	31.0	11.0		47
<i>Juncus squarrosus</i>	11.0	5.7	8.7		40
<i>Hylocomium splendens</i>	1.2	5.3	37.0	+ ***	33
<i>Pleurozium schreberi</i>	9.8	27.2	24.0	+ *	40
<i>Hypnum cupressiforme</i>	36.9	33.3	20.9	– ***	33
<i>Nardus stricta</i>	33.1	15.7	6.8	– ***	53
<i>Festuca ovina</i>	8.6	8.4	2.7	– **	27
Site O2					
<i>Agrostis capillaris</i>	30.4	19.3	31.0		38
<i>Empetrum nigrum</i>	11.8	19.3	12.7		69
<i>Festuca ovina</i>	27.6	25.2	26.0		46
<i>Galium saxatile</i>	10.9	7.2	10.0		46

1	<i>Rhytidiadelphus squarrosus</i>	6.6	6.9	5.2			46
2	<i>Hylocomium splendens</i>	33.6	35.3	56.1	+	***	31
3	<i>Calluna vulgaris</i>	29.7	40.6	39.3	+	**	31
4	<i>Deschampsia flexuosa</i>	31.2	20.9	11.4	-	***	38
5	<i>Festuca rubra</i>	16.5	3.6	1.5	-	***	46
6	<i>Alchemilla alpina</i>	17.4	20.4	8.3	-	**	38
7	<i>Vaccinium myrtillus</i>	19.2	19.9	9.0	-	**	38
8	<i>Anthoxanthum odoratum</i>	9.1	4.4	4.0	-	*	46
9	<i>Pleurozium schreberi</i>	19.3	13.5	9.4	-	*	38
10	<i>Thymus polytrichus</i>	12.8	10.1	5.9	-	*	23

- 11
- 12
- 13
- 14
- 15
- 16
- 17
- 18
- 19
- 20
- 21
- 22
- 23
- 24
- 25
- 26
- 27
- 28
- 29
- 30
- 31
- 32
- 33
- 34
- 35
- 36
- 37
- 38
- 39
- 40
- 41
- 42
- 43
- 44
- 45
- 46
- 47
- 48
- 49
- 50
- 51

1
2
3 **Table 4 Average and final % cover of new species and timing of their entry in**
4 **years from the start of observations. New species were defined as ones not**
5 **occurring at the first and second recordings, and to qualify for the table they**
6 **needed 3 or more occurrences at a site and presence in both the last 2 recordings**
7 **there. No species qualified at sites L1 and L2. Standard errors are given.**
8

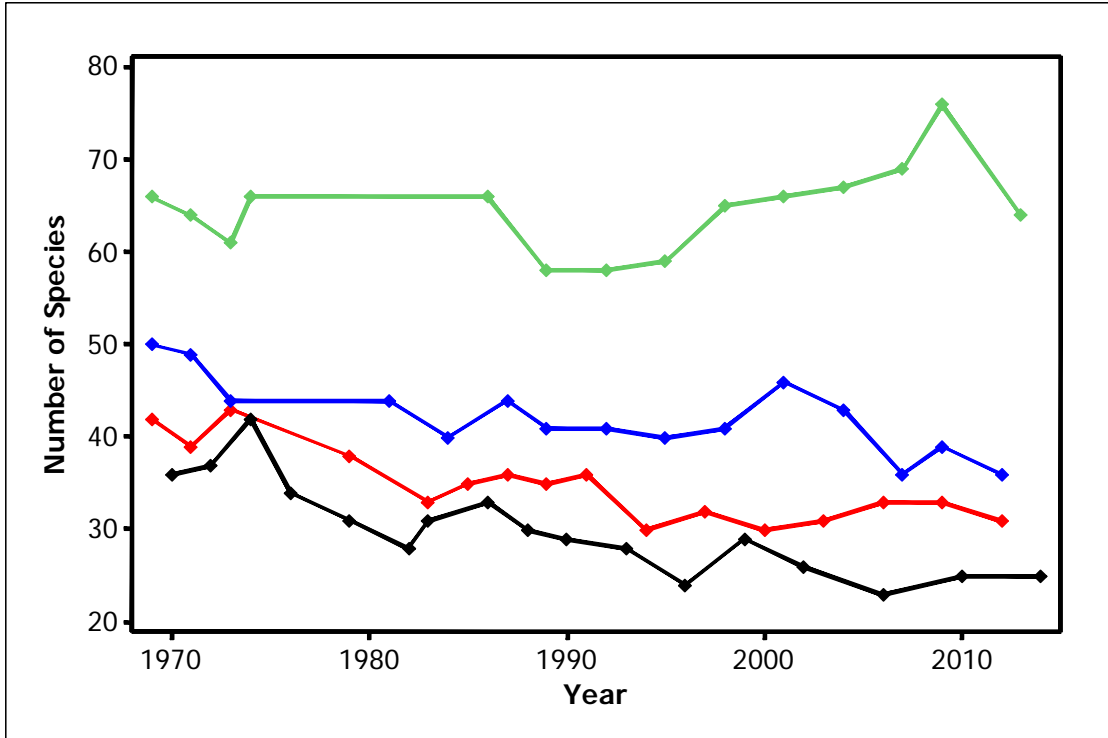
	% Average Cover	% Final Cover	Year of Entry
Site D2 qualifying species			
<i>Rhytiadelphus squarrosus</i>	0.4	1.2±0.5	16
Site O2 qualifying species			
<i>Helianthemum nummularium</i>	0.2	0.4±0.3	17
<i>Lathyrus linifolius</i>	0.1	0.1±0.1	26
<i>Lophocolea bidentata</i>	0.3	0.3±0.2	20
<i>Pseudoscleropodium purum</i>	0.2	0.3±0.3	26

Table 5 Initial and average % cover of lost species and timing of their last occurrence in years from the start of observations. Species were considered lost if absent in the final three recordings but having at least 4 earlier occurrences at a site. Initial % cover was the mean of cover in the first two recordings, and average cover was calculated from cover in all recordings from the first up to the last in which the species was recorded. Standard errors are given.

	% Initial Cover	% Average Cover	Final Year recorded
Site D2			
<i>Trichophorum germanicum</i>	0.1±0.1	0.1	13
<i>Aulacomnium palustre</i>	0.1±0.1	0.2	6
<i>Calypogeia fissa</i>	0.1±0.1	0.2	6
<i>Lophocolea bidentata</i>	0.8±0.3	0.4	32
<i>Pohlia nutans</i>	0.1±0.1	0.1	16
<i>Polytrichum commune</i>	0.4±0.2	0.3	26
<i>Cladonia uncialis</i>	3.3±0.9	1.6	26
<i>Cornicularia aculeata</i>	0.7±0.3	0.4	13
<i>Parmelia physodes</i>	3.6±0.5	1.9	20
Site L1			
<i>Blechnum spicant</i>	0.3±0.1	0.1	18
<i>Euphrasia officinalis</i> agg.	0.3±0.1	0.1	32
<i>Plagiomnium undulatum</i>	0.1±0.1	0.1	32
<i>Plantago lanceolata</i>	0.1±0.1	0.1	32
<i>Thuidium tamariscinum</i>	0.1±0.1	0.1	15
<i>Cladonia impexa</i>	0.1±0.1	0.1	35
Site L2			
<i>Carex panicea</i>	0.6±0.2	0.3	31
<i>Erica tetralix</i>	0.1±0.1	0.2	22
<i>Genista anglica</i>	0.1±0.1	0.1	31
<i>Campylopus flexuosus</i>	1.3±0.4	0.7	14
<i>Pohlia nutans</i>	0.3±0.1	0.1	22
Site O2			
<i>Calliargonella cuspidata</i>	0.3±0.2	0.3	5
<i>Plagiomnium rostratum</i>	0.0±0.0	0.1	29
<i>Warnstorffianum fluitans</i>	0.0±0.0	0.1	35

1
2
3
4
5
6

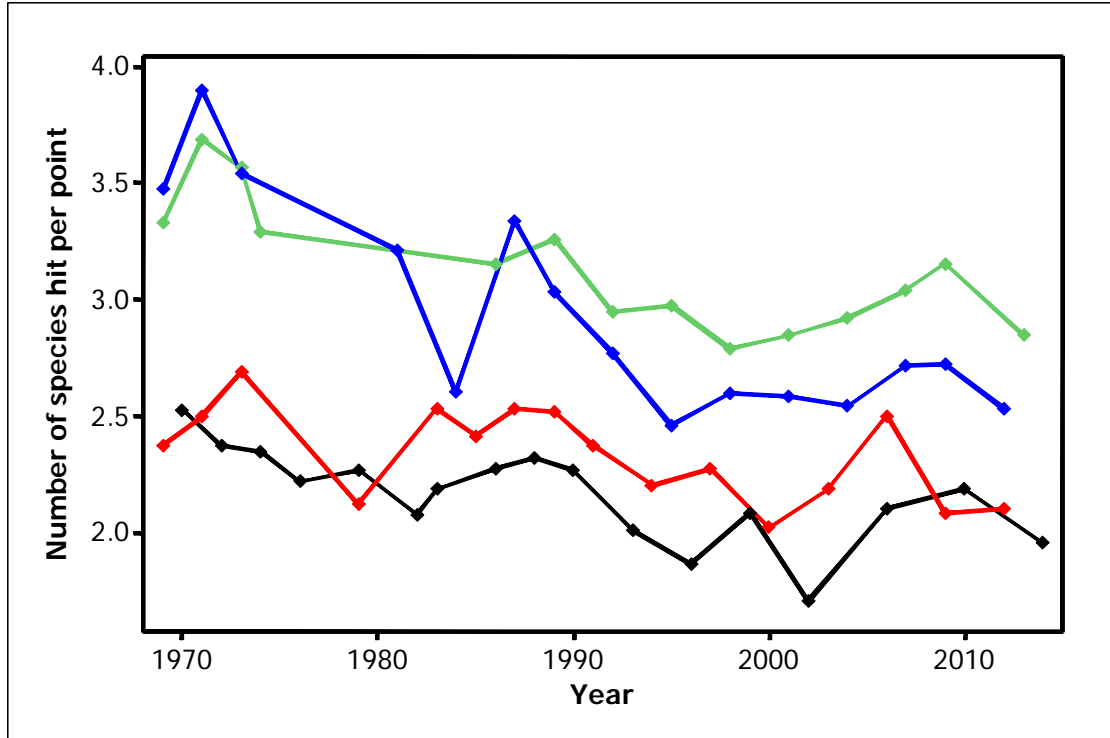
Figure 4a Change in total number of species observed at recordings at the four sites. Key: black = D2, red = L2, blue = L1, green = O2.



7
8
9
10
11
12
13
14
15
16
17
18
19
20
21
22
23
24
25
26
27
28
29
30
31

1
2
3
4
5
6

Figure 4b Change in mean number of species hit per point in recordings at the four sites. Key: black = D2, red = L2, blue = L1, green = O2.



7
8
9
10
11
12
13
14
15
16
17
18
19
20
21
22
23
24
25
26
27
28
29
30
31

1 **Table 6 Affinities to NVC types in *British Plant Communities* of the**
 2 **moorland communities at the four sites, for a) composition at the start of**
 3 **observations, and b) at the final recordings in years 43/44 of the study. The**
 4 **three most-closely related NVC types are given together with goodness-of-**
 5 **fit X^2 values obtained in TABLEFIT analyses; for a) the analyses used only**
 6 **species with cover > 1%, but for b) second analyses used all species present.**

Site	a		b			
	Composition in year 1		Final Composition in year 43/44			
	Spp < 1% excluded NVC type	X^2	Spp < 1% excluded NVC type	X^2	All spp included NVC type	X^2
D2	H10	79	H10	64	H10	60
	H10a	66	H21a	60	H18a	60
	H10c	65	H18a	58	H21	60
L1	CG11a	80	U4a	81	U4a	71
	U4a	77	U4d	75	CG10a	70
	CG10a	72	U5d	72	CG11a	69
L2	U5	74	H10	64	H21	62
	U5d	69	H18a	59	H18a	61
	U5e	68	H21	59	H21a	59
O2	CG11a	82	CG11a	78	CG11a	64
	H18b	78	H18b	71	H18b	53
	CG11	77	CG10b	67	CG10b	53