

1:250 000 Scale

# Geological Map of South Georgia

BAS GEOMAP 2 Series, Sheet 4, Edition 1

Geological interpretation and map compilation by M.L. Curtis. Geological cross section compiled by M.L. Curtis. Data preparation, digital cartography, design, and layout by M.L. Curtis and T.R. Riley. Geological mapping and digital mapping production was undertaken as part of the BAS Environmental Change and Evolution (ECE) programme.

Base map data for coastlines, rock outcrops and ice shelves from Landsat ETM+ Path: 206 Row: 098 7 February 2003, Landsat ETM+ Path: 207 Row: 098 2 May 2002.

Elevation data from NASA Shuttle Radar Topography Mission (SRTM) February 2000.

Bathymetry: Fretwell, P.T., Tate, A.J., Deen, T.J. and Belchier, M. (2009). Compilation of a new bathymetric dataset of South Georgia. Antarctic Science, 21, 171-174.

Preferred reference for the map:

CURTIS, M.L. 2011. Geological Map of South Georgia (1:250 000 scale). BAS GEOMAP 2 Series, Sheet 4, British Antarctic Survey, Cambridge, UK.

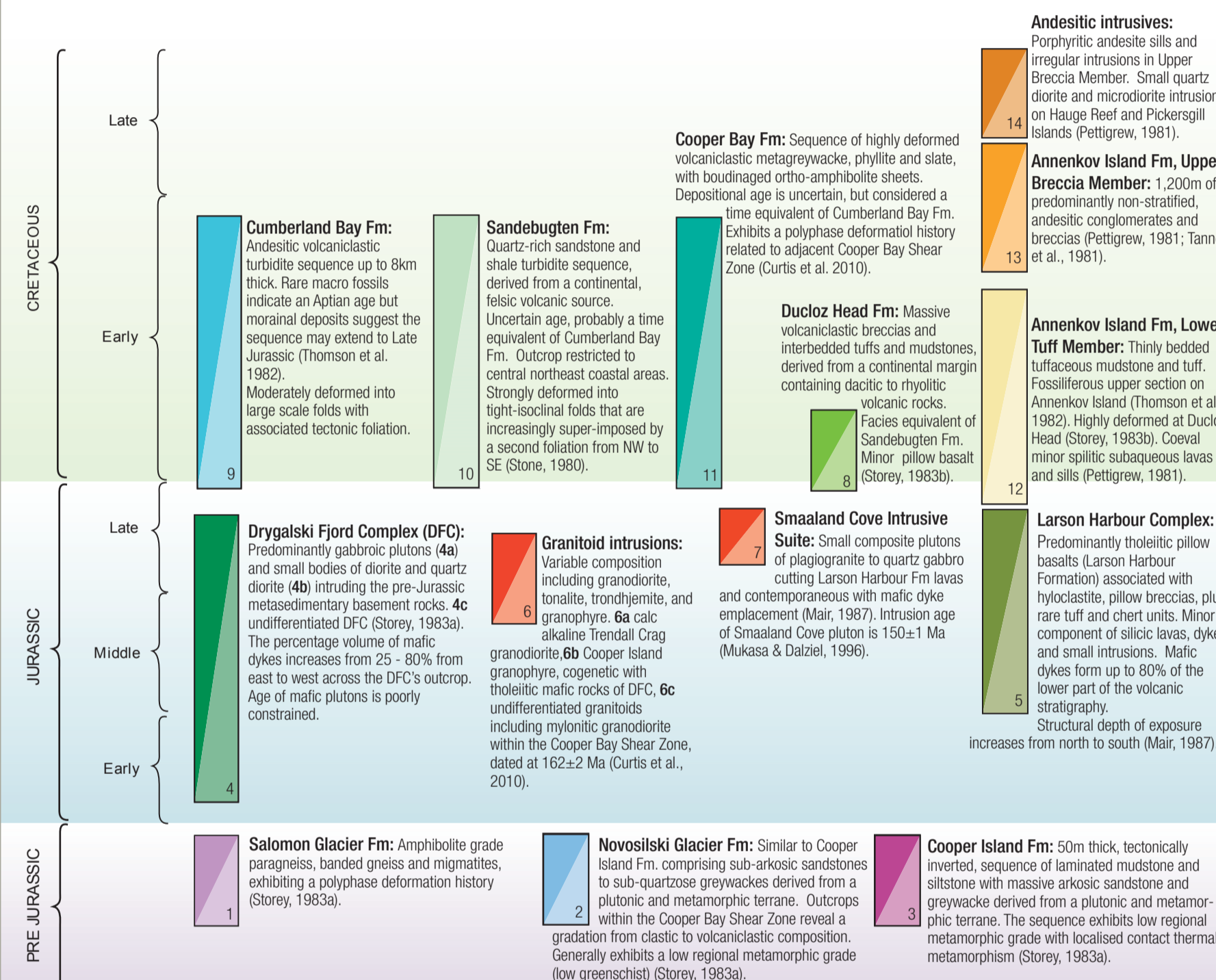
Projection: Lambert Conformal Conic, standard parallels at 54°S and 54°45'S.

Horizontal datum: WGS 84.

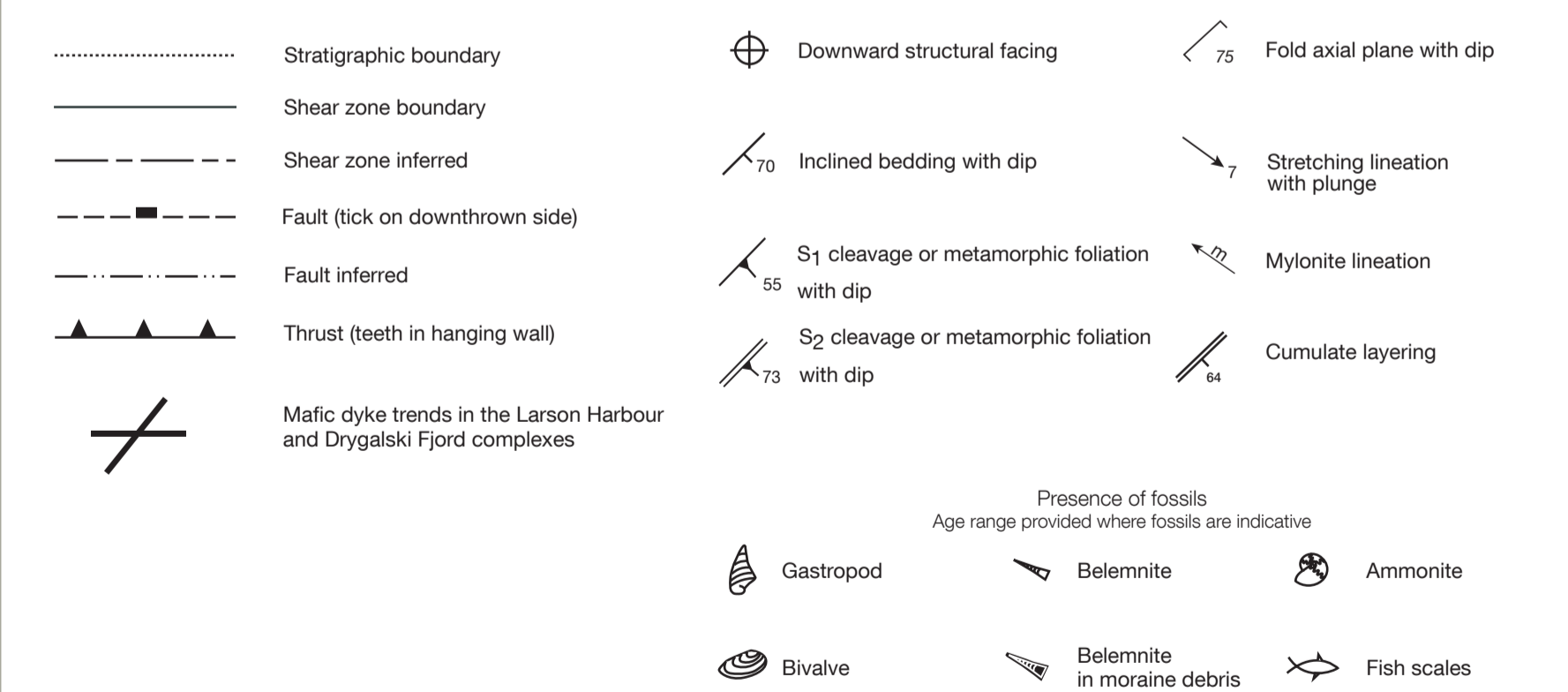
Published by BRITISH ANTARCTIC SURVEY, High Cross, Madingley Road, Cambridge, CB3 0ET, United Kingdom. This geological map is copyright © British Antarctic Survey, Natural Environment Research Council, 2011. All rights reserved.

## GEOLOGICAL LEGEND

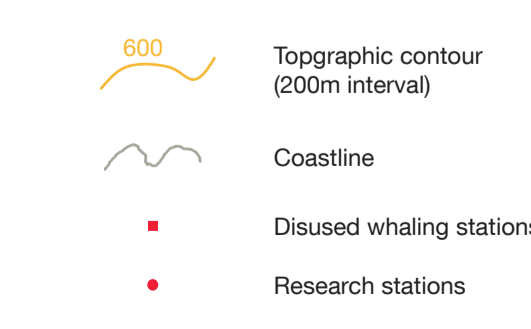
Geological units are coloured as dark and light tints representing exposed (mountains or nunataks) or inferred geology (under ice, snow, vegetation)



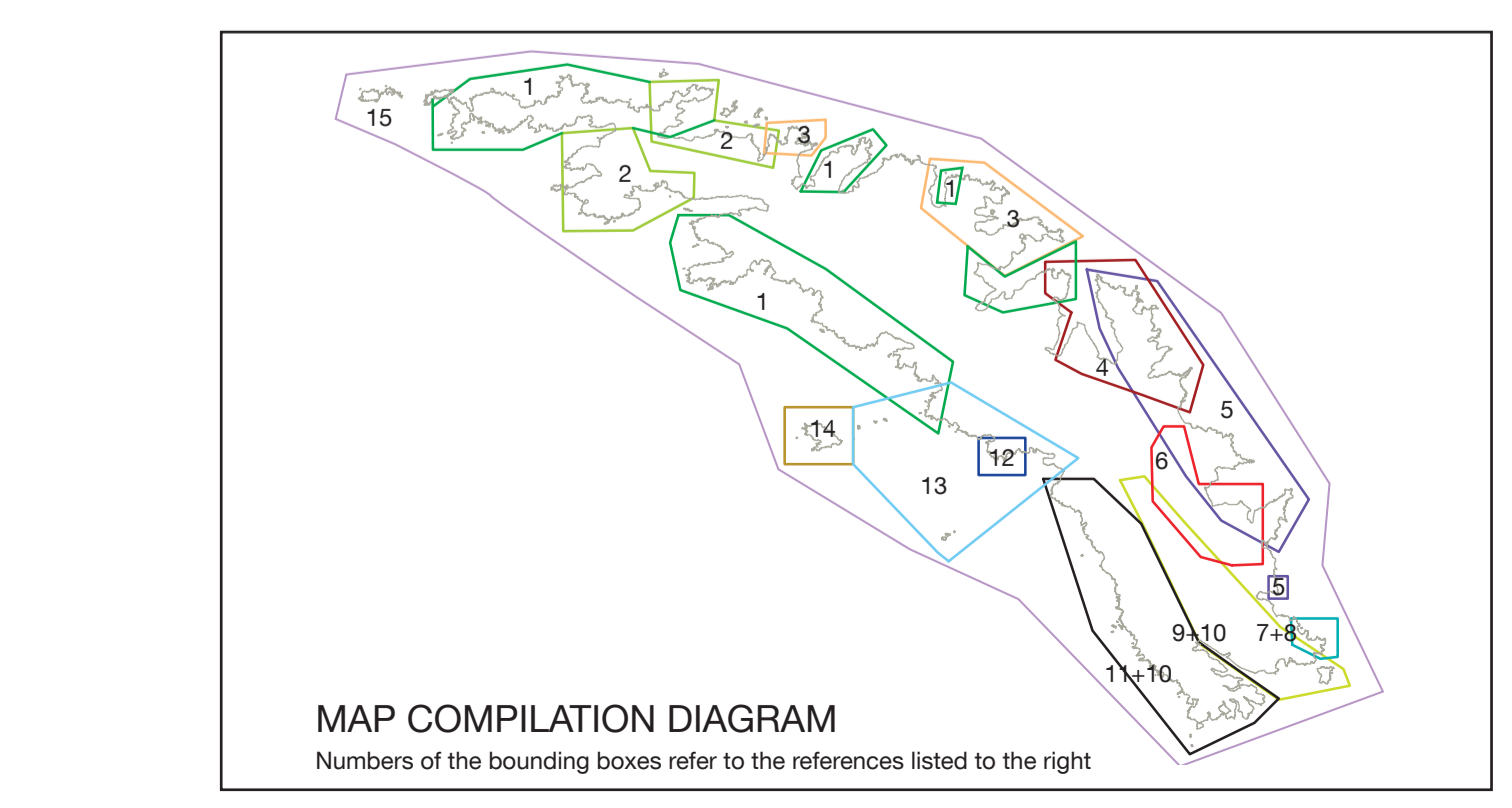
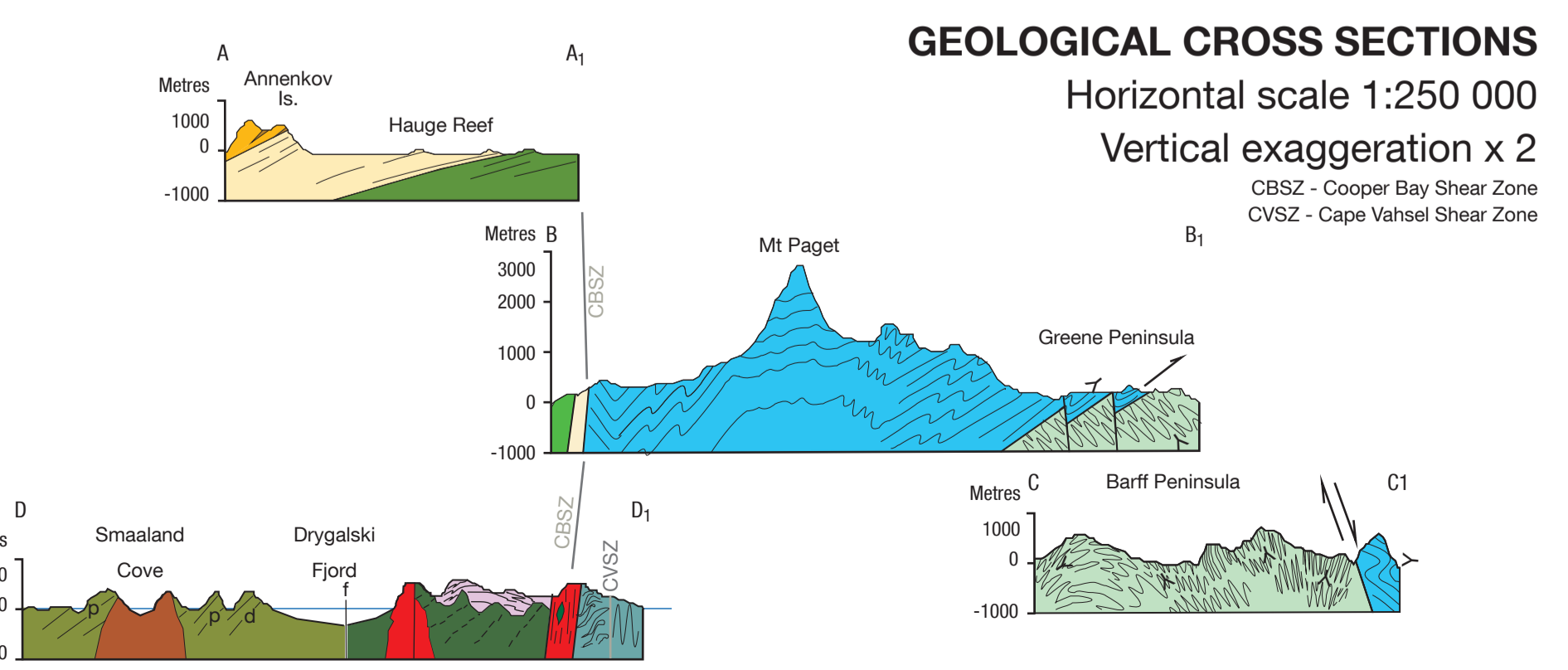
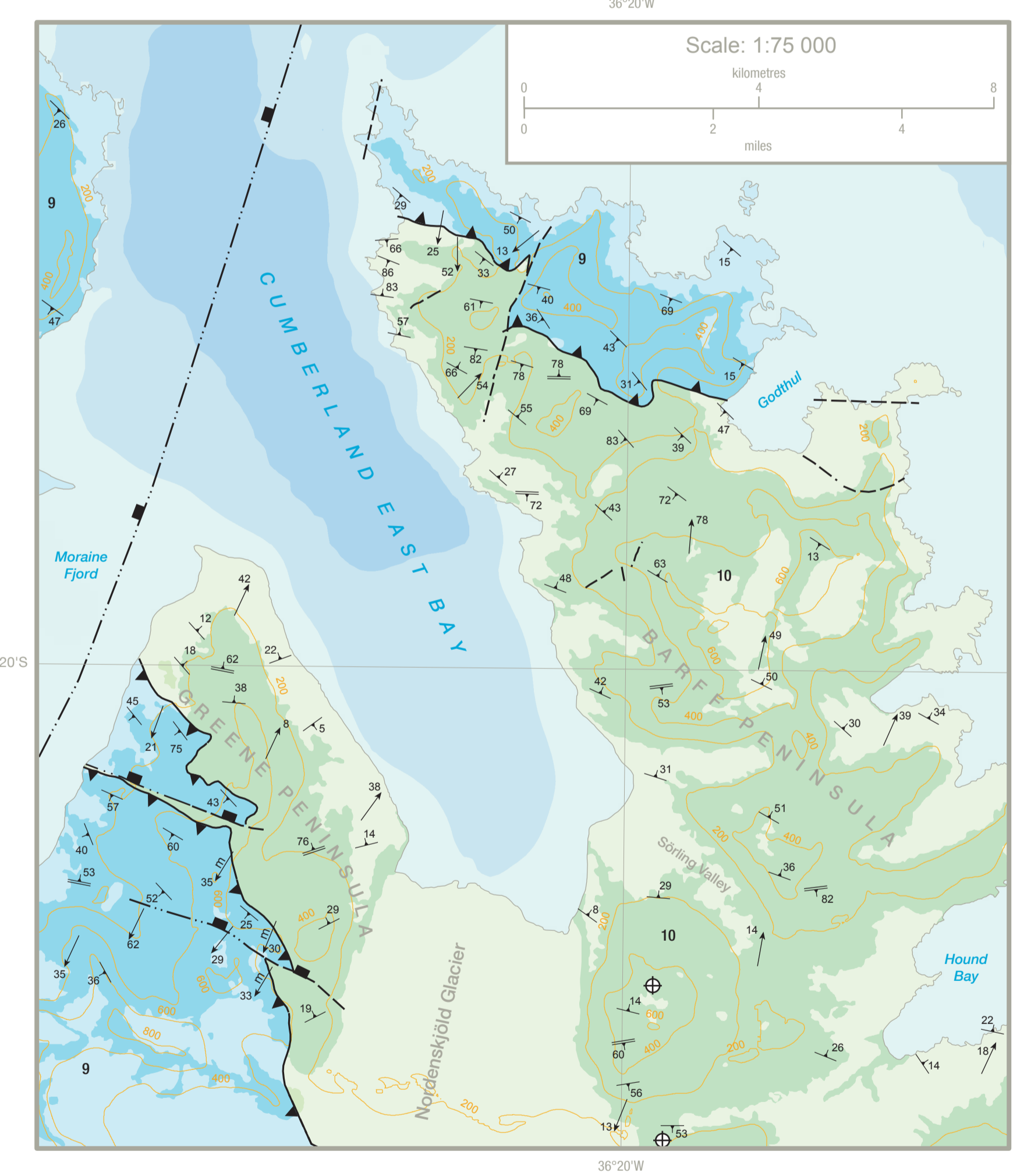
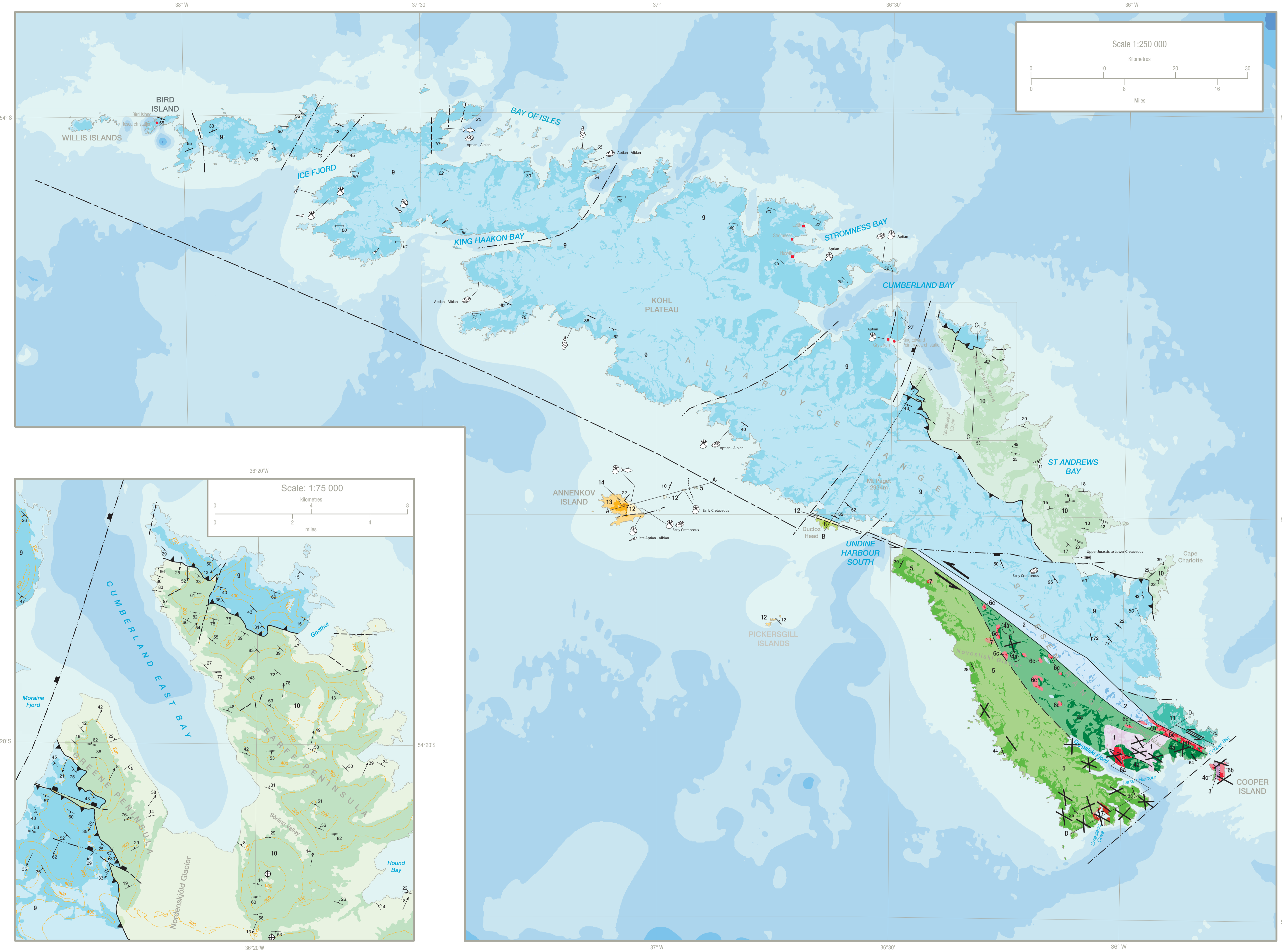
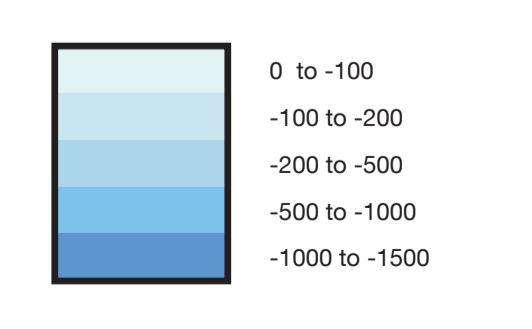
## GEOLOGICAL SYMBOLS



## OTHER SYMBOLS



## BATHYMETRY



### REFERENCES

1. Macdonald, D.I.M. 1982. The sedimentology, structure and palaeogeography of the Cumberland Bay Formation, South Georgia. PhD thesis, University of Cambridge, 155pp.
2. Clayton, R.A.S. 1983. The geology of north-western South Georgia. IV. Structural Geology. British Antarctic Survey Bulletin, 52, 187-204.
3. Skidmore, M.J. 1972. The Geology of South Georgia. III. Prince Olav Harbour and Stromness Bay areas. British Antarctic Survey Scientific Reports, 73, 50pp.
4. Curtis, M.L. 2007. Geological field report for South Georgia: Field season 2, BIOPEARL project. British Antarctic Survey unpublished report. AD6/2R/2007/GL1.
5. Storey, P. 1980. The geology of South Georgia: IV. Barff Peninsula and Royal Bay areas. British Antarctic Survey Scientific Reports, 98, 45pp.
6. Crow, D. & Turnbull, I.M. 1986. Geological observations in the Ross Glacier area, South Georgia. British Antarctic Survey Bulletin, 71, 1-10.
7. Curtis, M.L. 2005. Geological field report for South Georgia: Field season 1, BIOPEARL project. British Antarctic Survey unpublished report. AD6/2R/2005/GL3.
8. Storey, P. 1980. Geological observations in the Cooper Bay - Wink Bay area, South Georgia. British Antarctic Survey Bulletin, 51, 43-53.
9. Storey, P. 1983a. The Geology of South Georgia: V. Drygalski Fjord Complex. British Antarctic Survey Scientific Reports, 107, 88pp.
10. Storey, P. & Mair, B.F. 1982. The composite floor of the Cretaceous back-arc basin of South Georgia. Journal of the Geological Society, London, 139, 729-738.
11. Mair, B.F. 1987. The Geology of South Georgia: VI. Larsen Harbour Formation. British Antarctic Survey Scientific Reports, 111, 60pp.
12. Storey, P. 1983b. The geology of the Ducloz Head area, South Georgia. British Antarctic Survey Bulletin, 52, 33-46.
13. Tanner, P.W.G., Storey, P. & Macdonald, D.I.M. 1981. Geology of an Upper Jurassic-Lower Cretaceous island arc assemblage in Hauga Reef, the Pickersgill Islands and adjoining areas of South Georgia. British Antarctic Survey Bulletin, 53, 213-254.
14. Macdonald, D.I.M., Storey, P. & Thomson, J.W. 1987. South Georgia. BAS GEOMAP series, sheet 1, 1:250 000. Geological map and supplementary text, 63pp.

Other referenced sources  
Curtis, M.L., Flowerdew, M.J., Riley, T.R., Whitehouse, M.J. & Daly, S. 2010. Andean sinistral transpression and kinematic partitioning in South Georgia. Journal of Structural Geology, 32, 464-477.  
Mukasa, S.B. & Dalziel, I.W.D. 1998. Southernmost Andes and South Georgia Island, North Scotia Ridge: Zircon U-Pb and muscovite 40Ar/39Ar age constraints on tectonic evolution of Southwestern Gondwanaland. Journal of South American Earth Sciences, 9, 349-365.  
Thomson, M.R.A., Tanner, P.W.G. & Rex, D.C. 1982. Fossil and radiometric evidence for ages of deposition and metamorphism of sedimentary sequences on South Georgia. In: Antarctic Geoscience, ed. C. Craddock, 177-184. University of Wisconsin Press, Madison.