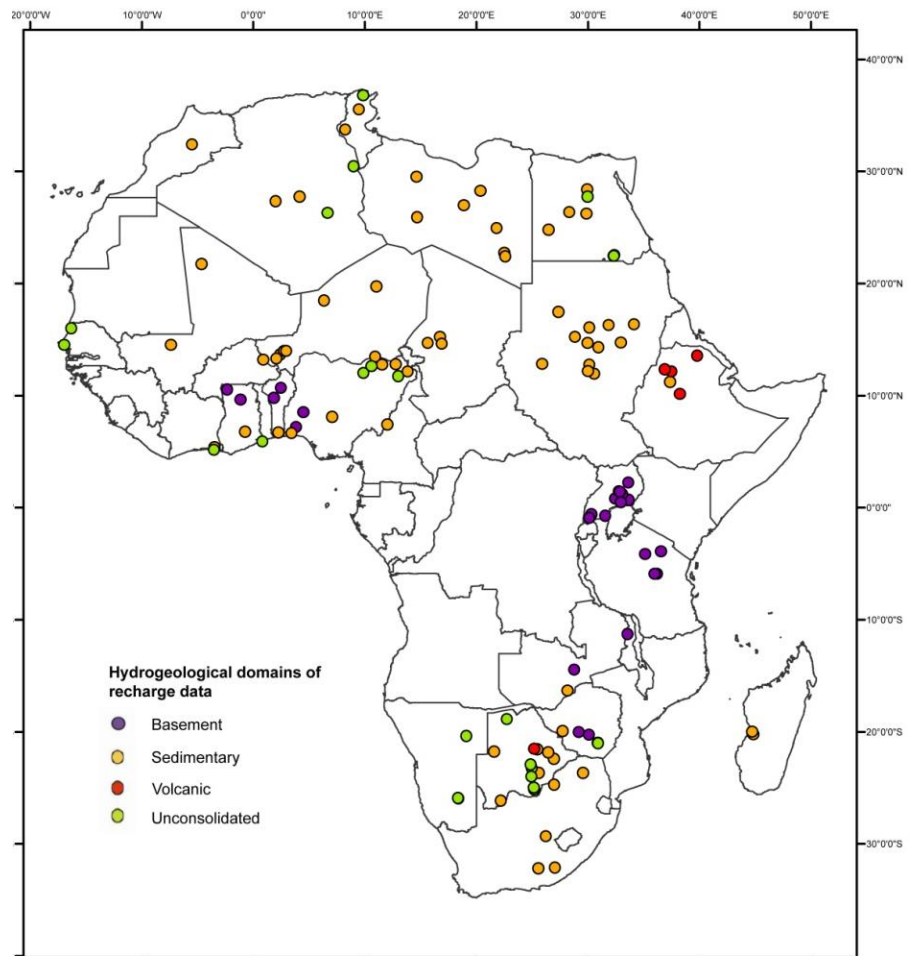




Groundwater and climate change in Africa: review of recharge studies

Groundwater Science Programmes

Internal Report IR/10/075



BRITISH GEOLOGICAL SURVEY

GROUNDWATER SCIENCE PROGRAMME

INTERNAL REPORT IR/10/075

Groundwater and climate change in Africa: review of recharge studies

H C Bonsor and A M MacDonald

The National Grid and other Ordnance Survey data are used with the permission of the Controller of Her Majesty's Stationery Office.
Licence No: 100017897/2010.

Keywords

Africa; recharge; systematic data review.

Bibliographical reference

BONSOR H C, AND MACDONALD A M. 2010. Groundwater and climate change in Africa: review of recharge studies. *British Geological Survey Internal Report, IR/10/075*. 30pp.

Copyright in materials derived from the British Geological Survey's work is owned by the Natural Environment Research Council (NERC) and/or the authority that commissioned the work. You may not copy or adapt this publication without first obtaining permission. Contact the BGS Intellectual Property Rights Section, British Geological Survey, Keyworth, e-mail ipr@bgs.ac.uk. You may quote extracts of a reasonable length without prior permission, provided a full acknowledgement is given of the source of the extract.

Maps and diagrams in this book use topography based on Ordnance Survey mapping.

BRITISH GEOLOGICAL SURVEY

The full range of our publications is available from BGS shops at Nottingham, Edinburgh, London and Cardiff (Welsh publications only) see contact details below or shop online at www.geologyshop.com

The London Information Office also maintains a reference collection of BGS publications, including maps, for consultation.

We publish an annual catalogue of our maps and other publications; this catalogue is available online or from any of the BGS shops.

The British Geological Survey carries out the geological survey of Great Britain and Northern Ireland (the latter as an agency service for the government of Northern Ireland), and of the surrounding continental shelf, as well as basic research projects. It also undertakes programmes of technical aid in geology in developing countries.

The British Geological Survey is a component body of the Natural Environment Research Council.

British Geological Survey offices

BGS Central Enquiries Desk

Tel 0115 936 3143 Fax 0115 936 3276
email enquiries@bgs.ac.uk

Kingsley Dunham Centre, Keyworth, Nottingham NG12 5GG

Tel 0115 936 3241 Fax 0115 936 3488
email sales@bgs.ac.uk

Murchison House, West Mains Road, Edinburgh EH9 3LA

Tel 0131 667 1000 Fax 0131 668 2683
email scotsales@bgs.ac.uk

Natural History Museum, Cromwell Road, London SW7 5BD

Tel 020 7589 4090 Fax 020 7584 8270
Tel 020 7942 5344/45 email bgs_london@bgs.ac.uk

Columbus House, Greenmeadow Springs, Tongwynlais, Cardiff CF15 7NE

Tel 029 2052 1962 Fax 029 2052 1963

Maclean Building, Crowmarsh Gifford, Wallingford OX10 8BB

Tel 01491 838800 Fax 01491 692345

Geological Survey of Northern Ireland, Colby House, Stranmillis Court, Belfast BT9 5BF

Tel 028 9038 8462 Fax 028 9038 8461

www.bgs.ac.uk/gsni/

Parent Body

Natural Environment Research Council, Polaris House, North Star Avenue, Swindon SN2 1EU

Tel 01793 411500 Fax 01793 411501
www.nerc.ac.uk

Website www.bgs.ac.uk

Shop online at www.geologyshop.com

Foreword

In 2010 the Department for International Development (DFID) commissioned a BGS-led team to undertake a one-year study aimed to improve understanding of the resilience of groundwater in Africa to climate change and links to livelihoods. As part of this project, the research team undertook hydrogeological field studies in West and East Africa, examined the linkages between water use and household economy, and developed an aquifer resilience map for Africa using existing hydrological maps and data. This is one of a series of progress reports written for the project partners and steering group to help discussion.

This report describes the methodology and results of a systematic review of recharge studies in Africa, undertaken within the one-year project. The aim of this review of recharge studies was to: strengthen the evidence base between climate change and aquifer resilience, alongside the other project outputs; and, to provide a review of recharge studies to help with calibration of future hydrological models in Africa.

Acknowledgements

As with all projects we would like to thank a number of BGS and external colleagues for their help and assistance:

Mike Edmunds (UoOx), of the Project Steering Group for providing expert peer review of the systematic recharge review.

George Darling (BGS) for his help and advice on developing the inclusion and confidence criteria within the review

The Project Steering Group, for their general comments and helpful insight with this work – Guy Howard (DFID); Stephen Foster (GWMATE); Mike Edmunds (UoOx), Declan Conway (UAE); Richard Carter (WaterAid); Vincent Casey (WaterAid); Richard Harding (CEH) and Tamiru Abiye (University of Witwatersrand, Johannesburg).

Contents

Foreword	i
Acknowledgements	ii
Contents	i
1 Introduction	2
2 The review of recharge studies in Africa	3
2.1 A comprehensive review	3
2.2 The inclusion criteria	3
2.3 The confidence criteria	4
3 Recharge data identified	11
4 Preliminary analysis of recharge data	12
References	15
Appendix 1	16
Appendix 2	19

FIGURES

Figure 1 – Distribution of recharge data identified within Africa from peer-reviewed and grey literature.....	5
Figure 2 Spatial and geological distribution of reviewed recharge data within Africa.....	11
Figure 3 Recharge with respect to average annual rainfall, irrespective of geology.....	12
Figure 4 – Recharge with respect to average annual rainfall, and the main Hydrogeological domains in Africa.....	13
Figure 5 – (a) relationship between recharge and rainfall within Basement hydrogeological domains; (b) recharge and rainfall within sedimentary hydrogeological domains.....	13

TABLES

Table 1 Confidence criteria applied to recharge studies.....	5
Table 2 Applicability of recharge methods within Africa	8

1 Introduction

The review of recharge studies was conducted as part of a one year DFID-funded research programme, aimed at improving understanding of the impacts of climate change on groundwater resources and local livelihoods – see <http://www.bgs.ac.uk/GWResilience/>. The review is one of a series of components within the project. The overall outputs of the project are:

- **Two hydrogeological case studies in West and East Africa** – which assess the storage and availability of groundwater in different aquifers across different climate zones in Africa
- **A water use and livelihood case study** (analysis of Water Economy and Livelihoods (WELs) data, Ethiopia) – examining the linkages between water use and household economy
- **A review** of hydrogeological data for Africa
- **A map** of groundwater resilience to climate change in Africa

The aim of the review of recharge studies is to: strengthen the evidence base of the resilience of groundwater to climate change (alongside the other project outputs); and to provide a review of recharge data to help with validation of future hydrological models in Africa. Individual data from the review should not be over-interpreted, however, due to the strong spatial variability in recharge at a local-scale.

In total, 132 recharge studies from Africa have been identified in the review from 94 published and grey literature reports. This report is a progress report for the project partners and steering group to help discussion. The report describes the criteria used to identify and systematically review the studies. An initial analysis of the data is also provided in this report.

2 The review of recharge studies in Africa

2.1 A COMPREHENSIVE REVIEW

Information on recharge is found in published papers and in grey literature. Although there are other reviews of recharge data in Africa, they tend to focus on specific areas and groups of data. In this review we aimed to be comprehensive for Africa, bringing in as many recharge studies as possible and applying systematic inclusion and confidence criteria to the data. We have also included reviews on the applicability and use of different recharge estimation techniques in Africa, as these often included some recharge data, as well as providing the basis to the review of other studies.

2.2 THE SEARCH CRITERIA

Most of the studies identified by the review were found from a systematic web search using several of the main search engines – Web of Science, Science Direct, Google, Google scholar and Google books. The web search criteria utilised are outlined in Appendix 1. Each search generally pulled up between 5000 and 30 000 hits (up to 100 000 hits), from which 1-4 recharge studies might be sourced. Recharge studies were selected from the web search results, using the following search criteria:

- the title of item included the word “recharge” or relates to recharge
- the title of item includes, or refers to, a geographic location, or aquifer, in Africa
- the item is within published scientific literature, or downloadable grey literature (e.g. a United Nations report, or a USGS technical document)

In general, only the first 100 hits were found to be relevant to any one search.

An initial sift of the studies identified was used to exclude any reports which did not:

- contain at least some information (qualitative or quantitative) relating to recharge
- include some description of the geology

In addition to the web, recharge studies were identified within grey literature (e.g. BGS field data reports, country water ministry reports) and through individual researchers and organisations known to the project team. The same inclusion criteria were applied to the results of these more focused searches, as were to the web searches (see above).

In total 132 recharge studies were identified from 94 reports in peer-reviewed and grey literature – see Fig. 1.

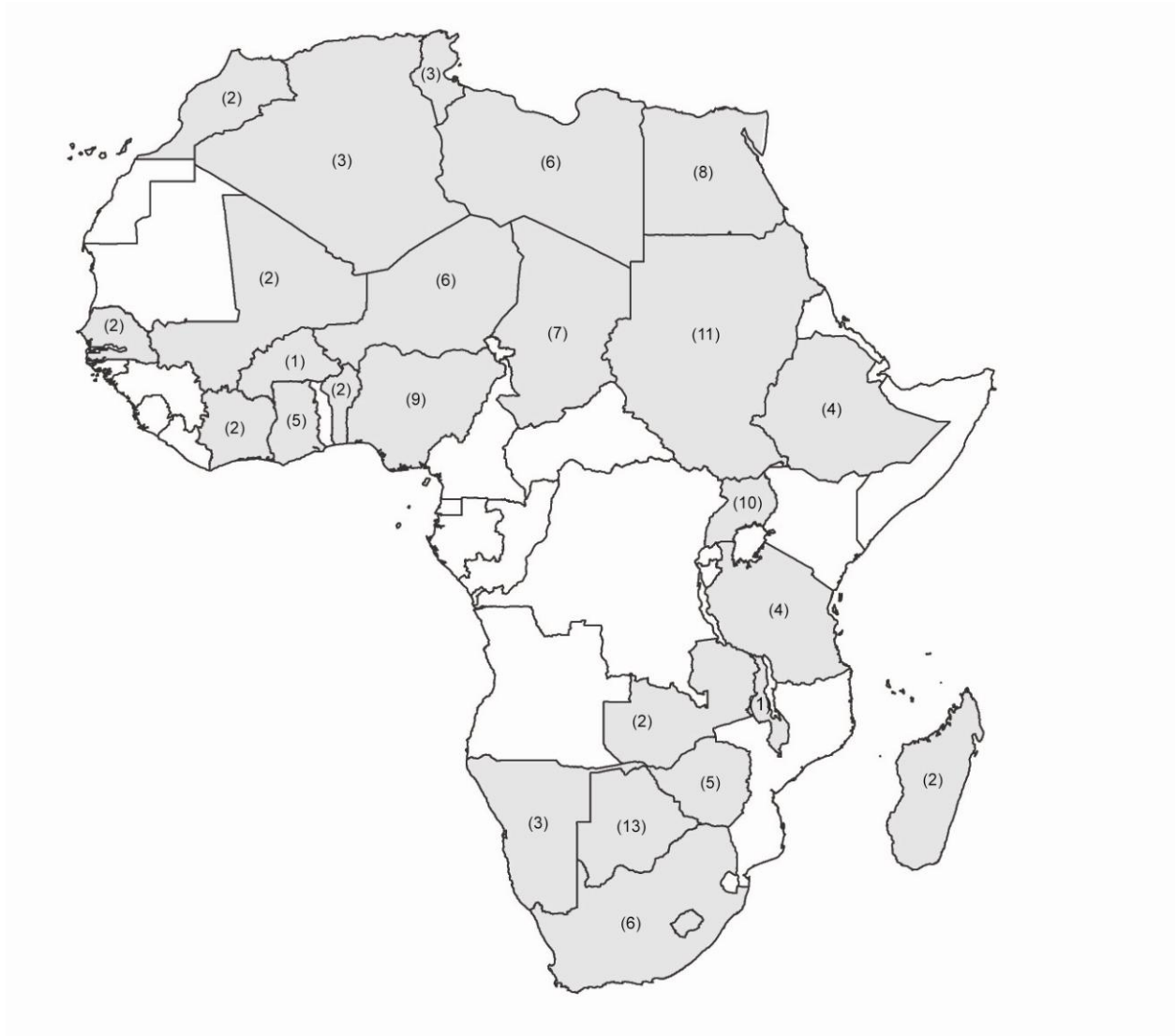


Fig. 1 – Distribution and number of recharge data identified from peer-reviewed and grey literature in Africa.

2.3 THE CONFIDENCE CRITERIA

A confidence rank was assigned to all studies included within the review using set criteria (see Table 1). In general, highest confidence was assigned to the data studies which provide direct recharge estimates. Qualitative recharge estimates (e.g. from groundwater dating studies), and review studies are assigned a lower confidence.

1. *Data studies*

High confidence (1-2) was assigned to the data studies which include more than 2 recharge estimation techniques appropriate to the geology and climate of the study area (see Applicability of methods section below); include sufficient hydrogeological and climatic data required by the estimation techniques (see Applicability of methods section below); base the recharge estimate from a large sample base; and include description of the regional geology. Generally, observational-based recharge estimates are considered to be more reliable than estimates that rely solely on modelling.

Recharge studies which use appropriate techniques to the geology and climate of the recharge area, but use a small sample base, or include insufficient information to the geology or methodology were assigned a confidence of 3.

Studies were only assigned a low confidence rating (4-5) if one of the techniques used in the study is inappropriate to the climate and geology (if all are inappropriate, the study is excluded), or there is limited information to the methodology, or geology of the study area.

2. Qualitative studies

Studies providing qualitative recharge data (e.g. groundwater dating studies) were some of the most common information sources identified by the review. These tend to be high quality studies which give a quantitative indication of groundwater age and residence time. The studies do not, however, provide quantifiable estimates of modern recharge rates, and as a result the studies are assigned a moderate confidence level (3-4) within this data review.

3. Review studies

Review studies, by their nature, are based on a wide range of data and field experience and as a result can provide more reliable recharge information than a small sampling survey. The identified studies all include some raw data, but very few describe explicit inclusion or confidence criteria for the data reviewed, or contain sufficient information to the methodology of the recharge estimates. Due to this, review studies were assigned a moderate confidence level (3-4) and original data studies were preferred.

Confidence	Confidence rank	Criteria
High	1	<ul style="list-style-type: none"> • Recharge estimate is based on observational data from at least 2 techniques appropriate to geology and climate; • Large sample base within recharge area (>20); • Good description of field methods, including raw data; • Description of site including geology and land-use <p><i>Plus either of the following:</i></p> <ul style="list-style-type: none"> • Inclusion of long-term, reliable hydroclimatic data; • Recent study (recharge estimate <30 years old)
High-Medium	2	<ul style="list-style-type: none"> • Recharge estimate is based on observational data from at least 2 techniques appropriate to geology and climate; • Large sample base within recharge area (>20); • Description of geology <p><i>Plus 2 of the following:</i></p> <ul style="list-style-type: none"> • Good description of field methods, including raw data; • Comparison of study results, to other recharge estimates within region; • Inclusion of long-term, reliable hydroclimatic data, or qualitative estimate of recharge from groundwater dating study; • Recent study (recharge estimate <30 years old)

Medium	3	<ul style="list-style-type: none"> • Single field-data based recharge estimation technique is used, which is appropriate to the climate and geology; • Comparison of study results, to other recharge work within region; <p><i>And/or:</i></p> <ul style="list-style-type: none"> • Recharge review with a good evidence base, or approximate recharge data from groundwater dating studies. <p><i>Plus 2 of the following:</i></p> <ul style="list-style-type: none"> • Small sample base within recharge area (<20) • Description of field methods and geology; • Inclusion of long-term, reliable hydroclimatic data; • Modelled recharge estimate, using sufficient accurate hydrogeological field-data, or qualitative estimate of recharge from groundwater dating study
Medium-Low	4	<ul style="list-style-type: none"> • Single recharge estimation technique is used, which is appropriate to the climate and geology, but results are not compared to other recharge work within region. <p><i>Or:</i></p> <ul style="list-style-type: none"> • Recharge review with poor evidence-base <p><i>Plus 2 of the following:</i></p> <ul style="list-style-type: none"> • Small sample base within recharge area (<20) • Limited description of field methods or geology; • No inclusion of long-term, reliable hydroclimatic data; • Modelled recharge estimates, based on little, or no, hydrogeological field-data, but are validated to other recharge studies based on observational data; • study (>30 years)
Low	5	<ul style="list-style-type: none"> • The recharge estimate is modelled, based on little, or no, accurate hydrogeological field-data • No comparison of study results, to other recharge work within region; <p><i>Plus 1 of the following:</i></p> <ul style="list-style-type: none"> • No inclusion of long-term, reliable historical hydroclimatic data; • Poor description of model • Limited description of the geology

Table 1 – Confidence criteria applied to recharge studies.

Applicability of methods

The applicability of recharge estimation techniques can vary with climate and geology in Africa (Checkley 2009; Xu and Beekman 2003). Table 2 sets out the main factors to the applicability of different recharge estimation techniques within Africa. All methods have different strengths and weaknesses as highlighted below for the primary techniques, and it is important to ensure the methods are applied to the appropriate terrain and climate. Confidence in recharge estimates can be increased by using several methods in conjunction.

Chloride mass balance technique – is suitable to most types of natural permeable terrain where there is no geological (e.g. from evaporite sequences) or contamination input of chloride to groundwater. The technique is particularly applicable in areas with low rainfall (e.g. where annual rainfall <600 mm/yr), as chloride accumulation is inversely proportional to the amount of recharge. In wetter areas, some of the chloride mass leaves the catchment as runoff. One of the major benefits of the CMB technique is that it gives a long-term estimate, integrating recharge inputs at a decadal scale, which water balance studies cannot do.

Water balance methods – are most applicable in high rainfall areas (e.g. where annual rainfall >500 mm/yr) where recharge can occur mostly through diffuse soil moisture approaches. In semi-arid areas a greater proportion of recharge is through focussed recharge and bypass flow (Xu and Beekman, 2003). Another limitation to water balance and soil moisture studies is that the techniques often measure output from the soil zone, rather than actual input to the aquifer. The applicability of water balance methods can therefore depend strongly on the availability of data on land-use, which influences the depth of the zero flux plane; depth of zero flux plane is dependent on temperature, soil structure, rooting depth, and seasonality and amount of rainfall (Wellings and Bell, 1982).

Water-table fluctuation method – is most applicable within: high rainfall areas (e.g. where annual rainfall >500 mm/yr) where there are large differences in large amounts of rainfall and evaporation; and, within low storage geologies, where changes in the water-level can be related to inputs of rainfall. However, a very good understanding of the storage coefficient of the hydrogeology is required to be able to interpret the water-table fluctuations. Care needs to be taken that the method is not applied in areas affected by local abstractions.

The applicability of recharge methods within Africa also varies according to the availability of accurate climatic data (Xu and Beekman; Scanlon et al. 2002). Groundwater models, and other water balance approaches, are also reliant on primary field data (e.g. values of hydraulic conductivity and specific yield). The scarcity of quantitative hydrogeological field-data for Africa means that there is often insufficient data to validate the models at an appropriate scale.

Recharge estimation technique	Principles of technique	Applicability of method	
		Advantages	Disadvantages
Primary techniques			
Chloride mass balance (CMB)	Chloride mass is conserved - therefore the chloride concentration in groundwater indicates effective rainfall.	<ul style="list-style-type: none"> • Suitable in many areas, particularly areas of low rainfall (where annual rainfall <600 mm/yr). • Widely suitable to natural permeable terrain. • Provides a long term recharge estimate, integrating recharge inputs at a decadal scale. • Data requirements not extensive. 	<ul style="list-style-type: none"> • Method is less applicable where geological input of chloride to groundwater –e.g. in sedimentary sequences with significant evaporite rocks • Care needs to be taken when applying technique to high rainfall areas (e.g. >600 mm/yr rainfall).
Water balance methods (WB) – soil moisture balance, saturated volume methods	Recharge estimated from numerical calculation of soil water balance using current climatic data and hydrological data.	<ul style="list-style-type: none"> • Most appropriate within wet climate zones (e.g. rainfall >500 mm/yr) where difference between rainfall and evaporation is small. • Widely suitable to natural permeable terrain. 	<ul style="list-style-type: none"> • Methods often measure output from the soil zone rather than actual input to the aquifer • Applicability depends strongly on the surrounding land-use. • Less applicable in semi-arid regions (e.g. rainfall <500 mm/yr)
Water table fluctuations (WTF); cumulative rainfall departure method (CRD)	Water-level fluctuations are proportional to the recharge or discharge	<ul style="list-style-type: none"> • Most appropriate within wet climate zones (e.g. rainfall >500 mm/yr) where difference between rainfall and evaporation is small. • Water level fluctuations easily measured 	<ul style="list-style-type: none"> • Requires detailed information on aquifer storage • Applicability depends strongly on no local abstractions of groundwater. • Less applicable in semi-arid regions (e.g. rainfall <600 mm/yr), and in high storage geologies, or where depth to groundwater is significant
Modern groundwater residence time – Tritium ($^3\text{H}/^3\text{He}$) and CFC/SF ₆	<p>Recharge date can be estimated from the dissolved concentration of tracers within groundwater – age gradient.</p> <p>Tritium provides accurate validation to historical recharge, and CFC/SF₆ validation to current recharge estimates.</p>	<ul style="list-style-type: none"> • Provide unrivalled accurate independent validation of other recharge estimates/techniques. Special value of ^3H profiles to validate CMB method. • Widely suitable to natural permeable terrain and climates. • IAEA studies and database available. 	<ul style="list-style-type: none"> • SF₆ concentrations often naturally contaminated in basement areas. • CFC concentrations can degrade leading to overestimation of residence time. • Analysis is expensive and conducted in specialist laboratories – mainly in Europe and USA.
Secondary technique			

Distributed groundwater modelling (GM)	Recharge derived from numerical simulation of water balance	<ul style="list-style-type: none"> • Easy to carry out and cover large areas. 	<ul style="list-style-type: none"> • Models are data intensive – often insufficient hydrogeological data to calibrate models at an appropriate scale. • Recharge estimates from large-scale models (hundreds of km) cannot be downscaled to local data. • Often unreliable
Qualitative techniques			
Palaeo-groundwater residence time indicators– (^{14}C)	Recharge date of palaeo-groundwaters can be estimated from the dissolved concentration of tracers– age gradient. ^{14}C is the main technique, providing semi-quantitative residence time values.	<ul style="list-style-type: none"> • Widely suitable to natural permeable terrain and climates. • Provide unrivalled accurate independent validation of other recharge estimates/techniques. • IAEA studies and database available. 	<ul style="list-style-type: none"> • Analysis is expensive and conducted in specialist laboratories – mainly in Europe and USA. Often water balance methods used instead of isotope studies in wet climates due to the expense of the technique. • ^{14}C is less applicable within fractured systems, where groundwater residence times are very short.
Palaeo-groundwater residence time indicators– (^2H , ^{18}O)	^2H and ^{18}O provide qualitative estimates, supporting the ^{14}C method.	<ul style="list-style-type: none"> • Relatively inexpensive to sample and analyse 	<ul style="list-style-type: none"> • Ambiguous and often only useful in support of other methods.

Table 2 – Applicability of recharge estimation methods in Africa.

3 Recharge data identified

In total, 132 recharge studies from Africa were identified from 94 published and grey literature reports by this review. The studies provide data for many of the major sedimentary basins in Africa, but there are limited recharge data (quantitative or qualitative) for central Africa and from basement rock types across the continent – see Fig. 2. High confidence (1-2) data are scarce (only 10% of studies reviewed), with most (40%) of the identified recharge studies containing either moderate confidence (3) recharge data or qualitative recharge estimates. Appendix 2 shows the full reference list of recharge studies reviewed, with assigned confidence values.

The review aimed to be comprehensive for Africa, and as a result was inclusive of both high and low quality data to ensure the best spatial coverage of data. Low quality data can be useful, particularly within regions where there is very little data. The confidence rank, systematically assigned to the data, ensures appropriate emphasis is placed on the different quality data.

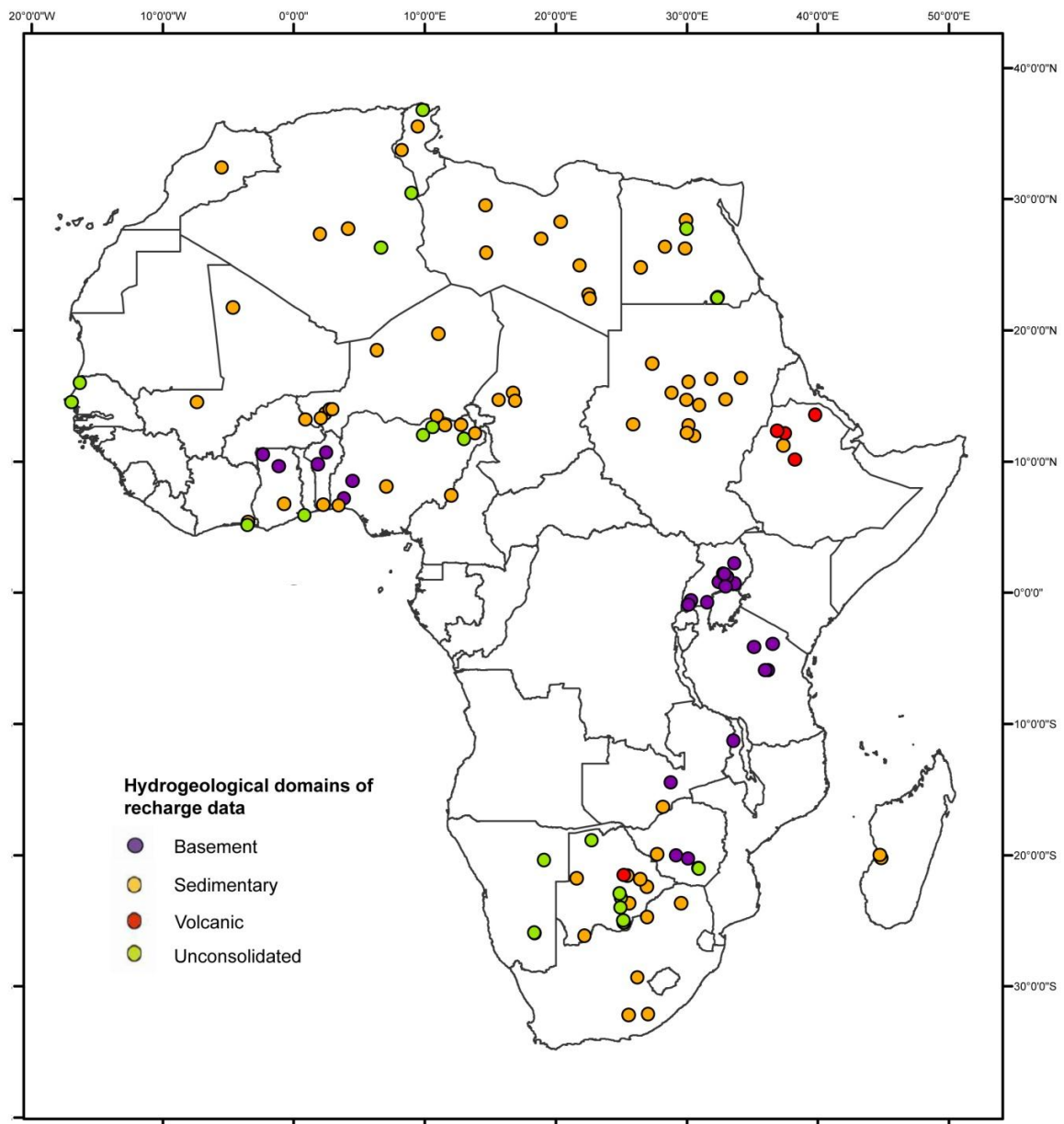


Fig. 2 – Spatial and geological distribution of reviewed recharge data within Africa.

4 Preliminary analysis of recharge data

Below we set out a preliminary analysis of the recharge data identified in the review.

Recharge and climate

Looking at the entire dataset collated, a broad range of modern annual recharge is identified across Africa – Fig.3. Taking into account data from all of the hydrogeological domains in Africa, a broadly linear relationship rainfall and recharge is indicated by the data – see Fig. 3. The correlation is moderately strong – R^2 coefficient calculated to be 0.75.

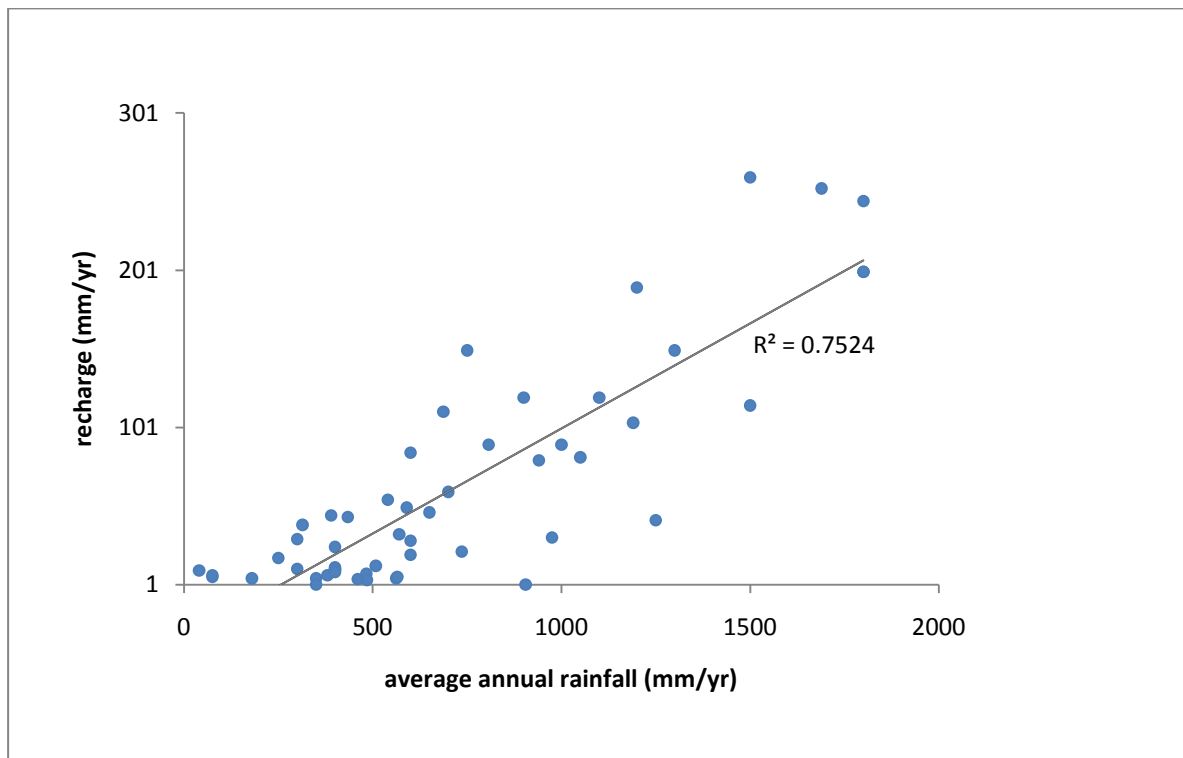


Fig. 3 – Recharge with respect to average annual rainfall for Africa.

Recharge, climate and geology

Fig. 4 shows how recharge varies with both climate and the aquifer geology.

In basement geology, a strong linear relationship between rainfall and recharge is displayed in the data reviewed (R^2 coefficient of 0.73) – see Fig. 5. In contrast, in sedimentary aquifers a non-linear relationship is observed between rainfall and recharge – Fig. 5. In these aquifers low recharge can be observed even in areas of wet seasonal climate (average annual rainfall 500-1000 mm/yr) – Fig. 5.

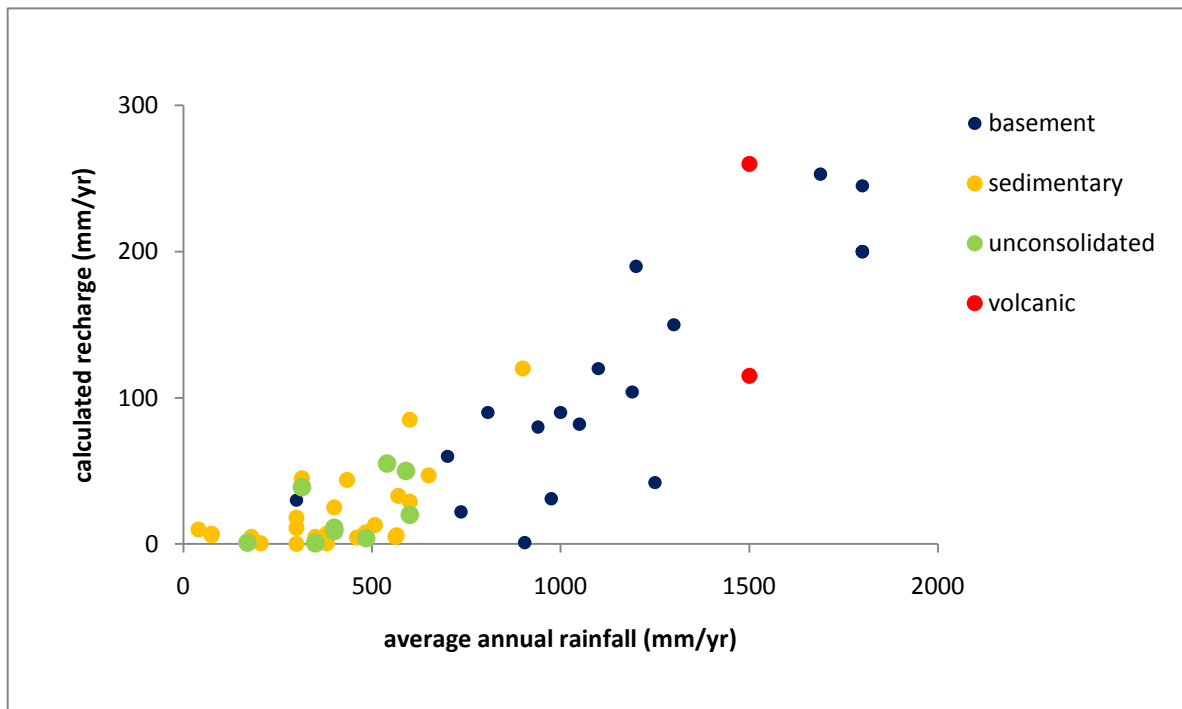


Fig. 4 – Recharge with respect to average annual rainfall and the main hydrogeological domains in Africa.

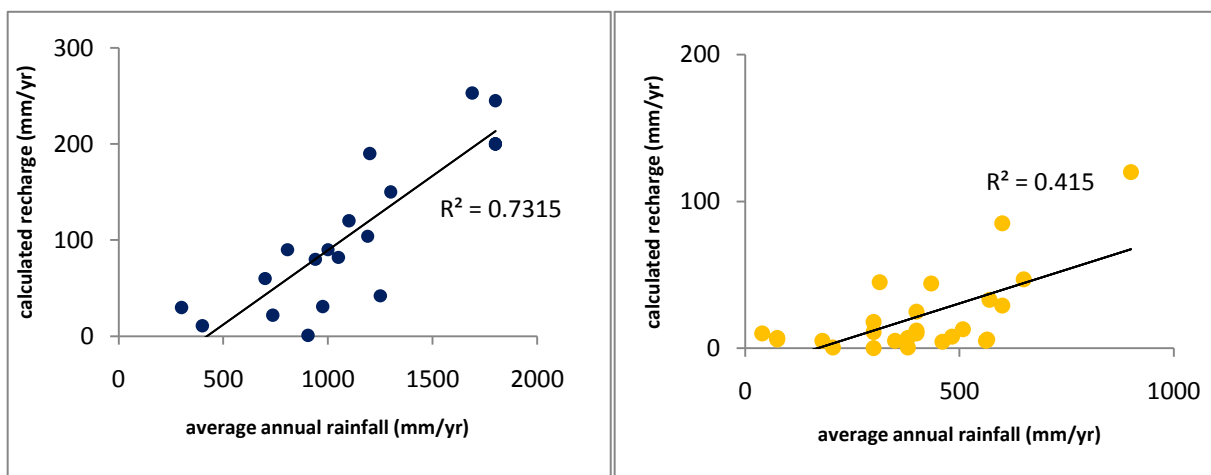


Fig. 5 – (a) relationship between recharge and rainfall within Basement hydrogeological domain; and (b) recharge and rainfall within sedimentary hydrogeological domains.

Ignoring the difference in geology shown in Figure 4, the recharge data from across Africa indicate that: where annual rainfall is <200 mm/yr minimal active recharge occurs (i.e. groundwater resources are finite); where annual rainfall is between *ca.* 200-500 mm/yr region recharge shows a complex non-linear relationship with rainfall; and where rainfall is above 500 mm/yr, a more linear relationship between recharge and climate is observed.

Sampling bias

Results from this analysis should not be over-interpreted. Whilst the data provide a useful insight into the broad range of recharge at a continental scale, there is a clear sampling bias to the data. As shown in Figs. 2 and 4, recharge estimates for each hydrogeological domain are derived predominantly from a single climate zone. For example, recharge data for basement geology are derived largely from seasonally wet climate zones in Africa, whilst recharge data from

sedimentary geology is from semi-arid and arid regions – see Fig. 4. As a result, inferences cannot be drawn to the controls on recharge.

The sampling bias is in part reflective of the natural outcrop of the different geologies in Africa, but it also reflects the difficulty in accessing parts of Africa in the last 50 years, and the general lack of systematic hydrogeological work in Africa.

References

British Geological Survey holds most of the references listed below, and copies may be obtained via the library service subject to copyright legislation (contact libuser@bgs.ac.uk for details). The library catalogue is available at: <http://geolib.bgs.ac.uk>.

CHECKLEY, C (2009), Mapping groundwater recharge in sub-saharan Africa: a review of groundwater recharge, Undergraduate Study, University College London.

SCANLON BR, HEALY RW and COOK PG (2002) Choosing appropriate techniques for quantifying groundwater recharge, *Hydrogeology Journal*, 10; 18-39.

WELLINGS, S.R. and BELL, J. P. (1982) Physical controls of water movement in the unsaturated zone, *Quarterly Journal of Engineering Geology and Hydrogeology*, 15; 3; 235-241.

XU, Y, and BEEKMAN, H E. (2003) Review of groundwaterwater recharge estimation in arid and semi-arid southern Africa, in XU and BEEKMAN (eds) *Groundwater recharge estimation in Southern Africa*, UNESCO, Paris pp. 3-18.

Appendix 1

Table of search criteria used to identify recharge data studies within web searches.

Search engine	Search criteria
Google, Google Scholar, and Google Books	<p>Groundwater + Chad basin Aquifer + Chad Basin Recharge + Chad Basin Isotopes + Chad basin</p> <p>Groundwater + Kufra Basin Recharge + Kufra Basin Recharge + Sirte Basin Isotopes + Kufra basin Groundwater model + Kufra Basin</p> <p>Groundwater + Upper Nile Basin Recharge + Upper Nile Basin Isotopes + Upper Nile basin</p> <p>Groundwater + Senegal basin Recharge + Senegal Basin Isotopes + Senegal basin Senegal Basin aquifer</p> <p>Groundwater + Volta basin Recharge + Volta Basin Isotopes + Volta basin</p> <p>Groundwater + Taoudeni basin Recharge + Taoudeni Basin Isotopes + Taoudeni basin Groundwater + Iullemeden basin Recharge + Iullemeden Basin Isotopes + Iullemeden basin Groundwater + Sokoto Basin Recharge + Sokoto Basin Isotopes + Sokoto basin</p> <p>Groundwater + Congo Basin Recharge + Congo Basin Isotopes + Congo basin Groundwater + DRC basin Recharge + DRC Basin Isotopes + DRC basin Groundwater + Zaire Basin Recharge + Zaire Basin Isotopes + Zaire basin Congo aquifer Central Africa + groundwater Central Africa aquifers</p> <p>Groundwater + West African Coastal Basin West Africa coastal aquifers Recharge + West Africa Isotopes + West Africa Groundwater + East Africa coastal basins</p>

	<p>East Africa coastal aquifers Recharge + East Africa Isotopes + East Africa</p> <p>Groundwater + Kalahari basin Recharge + Kalahari Isotopes + Kalahari Kalahari recharge Kalahari water supplies</p> <p>Groundwater + Karoo basin Recharge + Karoo Basin Isotopes + Karoo basin Karoo aquifer + groundwater Karoo aquifer basin</p>
Web of Science and Science Direct	<p>Groundwater + Chad basin Aquifer + Chad Basin Recharge + Chad Basin Isotopes + Chad basin</p> <p>Groundwater + Kufra Basin Recharge + Kufra Basin Recharge + Sirte Basin Isotopes + Kufra basin Groundwater model + Kufra Basin</p> <p>Groundwater + Upper Nile Basin Recharge + Upper Nile Basin Isotopes + Upper Nile basin</p> <p>Groundwater + Senegal basin Recharge + Senegal Basin Isotopes + Senegal basin Senegal Basin aquifer</p> <p>Groundwater + Volta basin Recharge + Volta Basin Isotopes + Volta basin</p> <p>Groundwater + Taoudeni basin Recharge + Taoudeni Basin Isotopes + Taoudeni basin Groundwater + Iullemeden basin Recharge + Iullemeden Basin Isotopes + Iullemeden basin Groundwater + Sokoto Basin Recharge + Sokoto Basin Isotopes + Sokoto basin</p> <p>Groundwater + Congo Basin Recharge + Congo Basin Isotopes + Congo basin Groundwater + DRC basin Recharge + DRC Basin Isotopes + DRC basin Groundwater + Zaire Basin Recharge + Zaire Basin Isotopes + Zaire basin Congo aquifer Central Africa + groundwater Central Africa aquifers</p> <p>Groundwater + West African Coastal Basin</p>

	<p>West Africa coastal aquifers Recharge + West Africa Isotopes + West Africa Groundwater + East Africa coastal basins East Africa coastal aquifers Recharge + East Africa Isotopes + East Africa</p> <p>Groundwater + Kalahari basin Recharge + Kalahari Isotopes + Kalahari Kalahari recharge Kalahari water supplies</p> <p>Groundwater + Karoo basin Recharge + Karoo Basin Isotopes + Karoo basin Karoo aquifer + groundwater Karoo aquifer basin</p>
--	--

Appendix 2

References of the recharge studies reviewed listed according to confidence rank. Some references are assigned multiple confidence values – these are review papers or regional studies which contain recharge data relating to more than one aquifer.

Confidence rank	Study reference
1	<p>Abdalla O A E (2009) GW recharge/discharge in semi-arid regions interpreted from isotope and chloride concentrations in the White Nile Rift, Sudan, <i>Hydrogeology J.</i>, 2009, 17; 679-692.</p> <p>Acheampong SY & Hess JW (1998) Hydrogeologic and hydrochemical framework of the shallow groundwater system in the southern Voltaian Sedimentary Basin, Ghana, <i>Hydrogeology J.</i>, 6; 527-537.</p> <p>Beekman H.E., Selalo, E.T, Van Elswijk, R.C, Lenderink, N and Obakeng, O.T.O. 1997. Chloride and isotope profiling studies in the Letlhakeng- Botlhapatlou area and the central Kalahari. (finalise reference)</p> <p>Edmunds WM, Darling WG, Kinniburgh DG, Kotoub S & Mahgoub S (1992) Sources of recharge at Abu Delaig, Sudan, <i>J. of Hydrol.</i>, 131; 1-24.</p> <p>Edmunds, Dodo, Djoret, et al. (2004) Groundwater as an archive of climatic and environmental change: Europe to Africa, In Batterbee, Gasse & Stickley (eds) <i>Past Climate Variability through Europe and Africa</i>. Dev in Palaeoenv Research series, Kluwer, 279-306</p> <p>Edmunds, Fellman & Goni (1999) Lakes, groundwater and palaeohydrology in the Sahel of NE Nigeria: evidence from hydrochemistry, <i>J. of Geol Soc London</i>, 156; 345-355.</p> <p>Edmunds, Guendouz, Mamou et al. (2003) GW evolution in the Continental Intercalaire aquifer of southern Algeria and Tunisia: trace element and isotopic indicators, <i>Applied Geochemistry</i>, 18; 805-822</p> <p>Edmunds. W. M. (2008) Groundwater in Africa - palaeowater, climate change, in Adelen&MacDonald (eds) <i>Applied GW studies in Africa</i>, IAH selected papers, 13; 305-322.</p> <p>Edmunds, W. M. and Tyler S. W. (2002) Unsaturated zones as archives of past climates: toward a new proxy for continental regions, <i>Hydrogeology Journal</i>, 10; 216-228.</p> <p>Gaye, C.B. and Edmunds, W. M. (1996) Intercomparison between physical, geochemical and isotopic methods for estimating groundwater recharge in northwestern Senegal, <i>Environmental Geology</i>, 27; 246-251.</p> <p>Gieske, Selaolo & McMullan (1990) Groundwater recharge through the unsaturated zone of southeastern Botswana: a study of chlorides and environmental isotopes, <i>Regionalisation in Hydrology</i>, Proceedings of the Ljubljana Symposium, April 1990, IAHS Publ, 191</p> <p>IAEA TECDOC-1246 Isotope based assessment of groundwater renewal in water scarce areas (2001) IAEA.</p> <p>Larsen F, Owen R, Dahlin T, Mangeya P & Barmen G (2002) A preliminary analysis of the groundwater recharge to the Karoo Fms, mid-Zambezi basin, Zimbabwe, <i>Physics and Chemistry of the Earth</i>, 27; 765-772.</p> <p>Obuobie E (2008) Estimation of groundwater recharge in the context of future climate change in the White Volta Basin, W Africa, PhD Thesis, University of Bonn, 2008</p> <p>Taylor and Howard (1996) Groundwater recharge in the Victoria Nile basin of east Africa: support for the soil moisture balance approach using stable isotope tracers and flow modelling, <i>J. of Hydrol.</i>, 180; 31-35.</p>

	<p>Taylor and Howard (1999) The influence of tectonic setting on the hydrological characteristic of deeply weathered terrains: evidence from Uganda, <i>J. of Hydrol.</i>, 218; 44-71.</p>
2	<p>Alker M (2008) The Lake Chad Basin Aquifer system, in Scheumann&Harrfahrtdt-Pahle (eds) <i>Conceptualising Cooperation for Africa's transboundary Aquifer systems</i>, d.i.e, German Dev Institute, 2008, Bonn</p> <p>Dabous & Osmond (2001) Uranium isotopic study of artesian and luvial contributions to the Nubian Aquifer, Western Desert, Egypt, <i>J. of Hydrol</i>, 243; 242-253.</p> <p>de Vries, Selaolo and Beekman (2000) GW recharge in the Kalahari, with reference to paleo-hydrologic conditions, <i>J. of Hydrol</i>, 238; 110-123.</p> <p>Edmunds, Fellman, Goni and Prudhomme (2002) Spatial and temporal distribution of gw recharge in northern Nigeria, <i>Hydrogeology Journal</i>, 10; 205-215.</p> <p>Foster SSD, Bath AH, Farr JL & Lewis WJ (1984) The likelihood of active groundwater recharge in the Botswana Kalahari, <i>J. of Hydrol.</i>, 55; 113-136.</p> <p>Houston, J (1992) RWS: comparative case histories from Nigeria nad Zimbabwe, in Wright and Burgess (eds) <i>The Hydrogeology of Crystalline Basement Aquifers in Africa</i>, Geological Society Speical Publication No 66.</p> <p>Kebebe, Travi, Alemayehu & Ayenew (2005) GW recharge, circulation & geochemical evolution in the source region of the Blue Nile River, Ethiopia, <i>Applied Geochemistry</i>, 20; 1658-1676.</p> <p>Le Gal La Salle C, Marlin C, Leduc C, Taupin JD, Massault M, Favreau G (2001) Renewal rate estimation of groundwater based on radioactive tracers (3H, 14C) in a unconfined aquifer in a semi-arid area, Iullemeden Basin, Niger, <i>J. of Hydrology</i>, 254; 145-156</p> <p>Nkotagu (1996) Application of environmental isotopes to gw recharge stuides in semi-arid fractured basement area of Dodoma, Tanzania, <i>J. of African Earth Sciences</i>, 22; 4, 443-457.</p> <p>Sami (2003) A comparison of Recharge Estimates in a Karoo Aquifer from a CMB in GW and an integrated Surface-Subsurface model, in in Xu&Beekman (eds) <i>GW recharge estimation in Southern Africa</i>, UNESCO, Paris.</p> <p>Sami K & Hughes DA (1996) A comparison of recharge estimates to a fractured sedimentary aquifer in South Africa from a chloride mass balance and ana integrated surface-subsurface model, <i>J. of Hydrol.</i>, 179; 111-136.</p> <p>Selaolo, Beekman, Gieske and de Vries (2003) Multiple Tracer Profiling in Botswana - GRES findings, in Xu&Beekman (eds) <i>GW recharge estimation in Southern Africa</i>, UNESCO, Paris.</p> <p>Van Tonder GJ & Kirchner J (1990) Estimation of natural groundwater recharge in the Karoo Aquifers of South Africa, <i>J. of Hydrol.</i>, 121, 395-419.</p> <p>Vrbka, Bussert and Abdalla (2008) GW in North and Central Sudan, in Adelena&MacDonald (eds) <i>Applied GW studies in Africa</i>, IAH selected papers, 13;</p> <p>Wright EP (1992) the hydrogoeology of crystalline basement aquifers in Africa, in Wright & Burgess (eds) <i>Hydrogeology of Crystalline Basement Aquifers in Africa</i>, Geological Socitey Special Publication, No 66, 1-27.</p> <p>Xu&Beekman, (2003) A box model for estimating recharge, in Xu&Beekman (eds) <i>GW recharge estimation in Southern Africa</i>, UNESCO, Paris.</p>
2-3	<p>Bredenkamp and Xu (2003) Perspectives on recharge estimation in Dolomitic Aquifers in South Africa in Xu&Beekman (eds) <i>GW recharge estimation in Southern Africa</i>, UNESCO, Paris.</p> <p>Brunner, Bauer, Eugster and Kinzelbach (2004) Using remote sensing to regionalise local precipitation recharge rates from the Chloride Method, <i>Journal of Hydrology</i>, 294; 241-250.</p>

	<p>Edmunds WM & Gaye CB (1994) Estimating the spatial variability of groundwater recharge in the Sahel using chloride, <i>J. of Hydrol.</i>, 156; 47-59.</p> <p>Houston, J (1992) RWS: comparative case histories from Nigeria nad Zimbabwe, in Wright and Burgess (eds) <i>The Hydrogeology of Crystalline Basement Aquifers in Africa</i>, Geological Society Speical Publication No 66</p> <p>Nkotagu (1996) Application of environmental isotopes to gw recharge stuides in semi-arid fractured basement area of Dodoma, Tanzania, <i>J. of African Earth Sciences</i>, 22; 4, 443-457.</p>
3	<p>Agyekum and Dapaah-Siakwan (2008) The occurrence of GW in northeastern Ghana, in Adelena&MacDonald (eds) <i>Applied GW studies in Africa</i>, IAH selected papers, Vol 13, 199-214.</p> <p>Alker M (2008) <i>The Stampriet Artesian Basin</i>, in Scheumann&Harrfahrtdt-Pahle (eds) <i>Conceptualising Cooperation for Africa's transboundary Aquifer systems</i>, d.i.e, German Dev Institute, 2008, Bonn</p> <p>Aynew, T (2004) the movement and occurrence of groundwater in the Ethiopian volcanic terrain, In <i>GW climate conference proceedings</i>, www.gwclim.org</p> <p>Bannerman & Ayibotele (1984) Some critical issues with monitoring crystalline rock aquifers for GW management in rural areas, In <i>Challenges in African Hydrology and Waert Resources</i>, Proceedings of the Harare Symposium July 1984, IAHS Publ 144.</p> <p>Bromley J, Edmunds WM, Fellman E, Brouwer J, Gaze SR, Sudlow J & Taupin JD (1997) Estimation of rainfall inputs and direct recharge to the deep unsaturated zone of southern Niger using the chloride profile method, <i>J. of Hydrology</i>, 188-189; 139-154.</p> <p>Butterworth, MacDonald DMJ, Bromley et al. (1999) Hydrological processes and water resources management in a dryland environemnt III: groundwater recharge and recession in shallow weathered aquifer, <i>HESS</i>, 3; 3, 345-352.</p> <p>Doll and Fiedler (2008) Global-scale modelling of GW recharge, <i>Hydrol Earth System Sci</i>, 12; 863-885.</p> <p>Farah, Mustafa & Kumai (2000) Sources of groundwater recharge at the confluence of the Niles, Sudan, <i>Environmental Geology</i>, 39; 6, 667-675.</p> <p>Fass T and Reichert B (2005) <i>Geochemical and Isotopic characterization of a local catchment within Crystalline Basement in Western African Benin</i>, University of Bonn Report, Institute of Geology, Germany: AND Bormann et al. (2005) <i>Physics&Chem Earth</i>; 30,347</p> <p>Faye, Diaw, Nodoye, Malua & Faye (2009) Impacts of CC on gw recharge and salinization of gw resources in Senegal, in <i>Proceedings of the Kampala Conference</i>, June 2008, IAHS Publ. 334, 2009</p> <p>Gavigan, Mackay & Cuthbert (2009) CC impacts on gw recharge in semi-arid Uganda and the role of GW in livelihood adaptation and peacebuilding, in <i>Proceedings of the Kampala Conference</i>, June 2008, IAHS Publ. 334, 2009</p> <p>Goni (2006) Tracing stable isotope values from meteoric water to groundwater in the southwestern part of the Chad Basin, <i>Hydrogeology J</i>, 14; 742-752.</p> <p>Guendouz, Moulla, Reminin & Michelot (2003) Hydrochemical & isotopic behaviour of a Saharan phreatic aquifer suffering severe natual and anthropic constraints (case of Oued-Souf region, Algeria), <i>Hydrogeology J.</i>, 14; 955-968.</p> <p>Heilweil, V. M. and Plummer L. N. (2010) Environmental tracers for elucidating vadose-zone and groundwater processes in the volcanic Cape Verde Islands, Conference abstract, GSA Denver Annual Meeting, 31 October – 3 November 2010.</p> <p>Houston JFT (1982) Rainfall and recharge to a dolomite aquifer in a semi-arid climate at Kabwe, Zambia, <i>J. of Hydrol.</i>, 59; 173-187.</p>

Howard KWF & Karundu J (1992) Constraints on the exploitation of basement aquifers in East Africa - water balance implications and the role of the regolith, *J. of Hydrol.*, 139; 183-196

Isiorho SA, Matisoff G & Wehn KS (1996) Seepage relationships between Lake Chad and the Chad aquifers, *Ground Water*, 34; 5, 819-827.

Jorgensen & Banoeng-Yakubo (2001) Environmental isotopes (^{18}O , ^2H , $^{87}\text{Sr}/^{86}\text{Sr}$) as a tool in gw investigations in the Keta Basin, Ghana, *Hydrogeology Journal*, 9; 190-201.

Leblanc M, Favreau G, Tweed S, Leduc C, Razack M and Mofor L (2007) Remote-sensing for groundwater modelling in large semi-arid areas, Lake Chad Basin, Africa, *Hydrogeology J.*, 15; 97-100

Leduc, Favreau & Schroeter (2001) Long-term rise in a Sahelian water-table: the Continental Terminal in South-West Niger, *J. of Hydrol.*, 243; 43-54.

Loehnert EP (1988) Major chemical and isotope variations in surface and subsurface waters of West Africa, *J. of African Earth Sciences*, 7; 3, 579-588.

MacDonald et al. 2002, Groundwater recharge in the Singida region of northern Tanzania, *unpublished*

Mileham, Taylor, Todd, Tindimugaya & Thompson (2008) The impact of CC on gw recharge and runoff in a humid, equatorial catchment; *Hydrol. Sci. J.*, 54; 4, 727-738.

Oga, Marlin, Dever, Filly, and Njitchoua (2008) Hydrochemical and isotopic characteristics of coastal GW near Abidjan, in Adelena&MacDonald (eds) *Applied GW studies in Africa*, IAH selected papers, 13;

Osenbruck, Stadler, Sultenfuss et al. (2009) Impact of recharge variations on water quality as indicated by excess air in groundwater of the Kalahari, Botswana, *Geochimica et Cosmochimica Acta*, 73; 911-922.

Owor, Taylor, Tindimugaya & Mwesigwa (2009) Rainfall intensity and gw recharge: empirical evidence from Upper Nile Basin, *Env. Research Letters*, 3.

Rajaobelison, Ramaroson, Randrianasolo et al. (2004) ^2H , ^3H & ^{18}O tracers used for a preliminary study of GW vulnerability to contaminants in the southwest of Madagascar, HEPMAD 2004 Conference Proceedings, Antanarivo, Madagascar, Sept-Oct 2004.

Scanlon BR, Keese, KE, Flint AL, Flint LE, Gaye CB, Edmunds WM & Simmers I (2006) Global synthesis of groundwater recharge in semiarid and arid regions, *Hydrological Processes*, 20; 3335-3370.

Shata (1982) Hydrogeology of the Great Nubian Sandstone basin, Egypt, *Quat. J. of Eng. Geology*, Mondon, 15; 127-133.

Sultan, Yan, Sturchio et al. (2007) Natural discharge: a key to sustainable utilization of fossil groundwater, *J of Hydrol.*, 335; 25, 36.

Swaiem FM, Hamza MS & Aly AIM (1983) Isotopic composition of groundwater in Kufra Libya, *International Journal of Water Resources Development*, 1; 4, 331-341.

Taylor and Howard (2002) GW recharge in the Victoria Nile Basin of East Africa: support for the soil-moisture balance method using stable isotope and flow modelling studies

Tijani MN (2008) Hydrochemical and stable isotopes compositions, in Adelena&MacDonald (eds) *Applied GW studies in Africa*, IAH selected papers, 13; p351

Verhagen B (2003) Recharge quantified with Radiocarbon in 3 studies of Karoo Aquifers in the Kalahari and Independent Corroboration, in Xu&Beekman (eds) *GW recharge estimation in Southern Africa*, UNESCO, Paris.

Verhagen BTH, (1994) Semi-arid zone groundwater mineralization processes as revealed by environmental isotopes, *Proceedings of the Vienna Symposium August 1994, on 'Application of Tracers in Arid Zone Hydrology*, p245-267.

	<p>Walraevens, Vandecasteele, Martens, Nyssen, Moeyersons, Gebreyohannes, De Smedt, Poesen, Deckers & Van Camp (2009) GW recharge and flow in a small mountain catchment in n Ethipoia, Hydrol. Sci. J. 54; 4, 739-753.</p> <p>Wright, Benfield, Edmunds and Kitcing (1982) Hydrogeology of the Kufra and Sirte Basins, eastern Libya, Q. J. of Eng. Geology, London, 15; 83-103.</p> <p>Zuppi & Sacchi (2004) Hydrogeology as a climate recorder: Sahara-Sahel (North Africa) and the Po Plain (N Italy), Global & Planetary Change, 40; 79-91.</p>
3-4	<p>Carter and Alkali (1996) Shallow groundwater in the northeast arid zone of Nigeria, Quarterly J. Of Engineering Geology and Hydrogeology, 29; 341.</p> <p>Carter RC (1994) The groundwater hydrology of the Manga grasslands, NE Nigeria: importance to agricultural development strategy for the area: Quarterly J. of Engineering Geology, 27; S73-S83.</p> <p>Mpamba NH, Hussen A, Kangomba S, Nkhuwa DCW, Nyambe IA, Mdala C, Wohnlich S & Shibusaki N (2008) Evidence and implications of groundwater mining in the Lusaka urban aquifers, Physics and Chemistry of the Earth, 33; 648-654.</p> <p>Nyenje & Batelaan (2009) Estimating the effctcs of climate change on GW recharge and baseflow in the upper Ssezibwa catchment, Uganda, Hydrol. Sci J. 54; 4, 713-726.</p>
4	<p>Ahmad (1984) A quantitative model to predict a safe yield for well fields in Kufra and Sarir Basin, Libya, Ground Water, 21; 1, 58-67.</p> <p>Alenaw & Chaoka (2003) A continental scale water balance model: a GIS approach for Southern Africa, Physics and Chemistry of the Earth, 28; 957-966.</p> <p>Alker M (2008) The Stampriet Artesian Basin, in Scheumann&Harrfahrtdt-Pahle (eds) Conceptualising Cooperation for Africa's transboundary Aquifer systems, d.i.e, German Dev Institute, 2008, Bonn</p> <p>Bouchaou, Michelot, Vengosh et al. (2008) Application of multiple isotopic and geochemical tracers for investigation of recharge, salinization and residence time of water in the Souss-Massa aquifer, southwest of Morocco, J. of Hydrol., 352; 267-287.</p> <p>Butterworth, Mugabe, Simmonds & Hodnett (1999) Hydrological processes and water resources management in a dryland environemnt II: surface redistribution of rainfall within fields, HESS, 3; 3, 333-343.</p> <p>Dassi L, Zouari K & Faye S (2005) Identifying sources of groundwater recharge in the Merguellil basin (Tunisia) using isotopic methods: implication of dam reservoir water accounting, Environmental Geology, 49; 114-123.</p> <p>Dincer T, Al-Mugrin AL & Zimmerman U (1974) Study of the infiltration and recharge through the sand dunes in arid zones with special reference to the stable isotopes and thermonuclear tritium, J. of Hydrol., 23; 79-109.</p> <p>Filippi C, Milville F & Thiery D (1990) Evaluation of natural recharge to aquifers in the Sudan-Sahel climate using global hydrogeological modelling: application to ten sites in Burkina Faso, Hydrological Sciences, 35; 1, 2, 29-49.</p> <p>Gheith & Sultan (2002) Construction of a hydrologic model for estimating Wadi runoff and groundwater recharge in Eastern Desert, Egypt, J. of Hydrol, 36-55.</p> <p>Gossel, Sefelnasr, Wycisk and Ebraheem (2008) A GIS based flow model for GW resources management in Eastern Sahara, Africa, in Adalena&MacDonald 2008 (eds) Applied GW studies in Africa, IAH selected papers, Vol13/AND Gossel et al. Hydrogeology J.,2004,12;</p> <p>Hamza, Added, Rodriguez, et al. (2007) A GIS-based DRASTIC vulnerability and net recharge assessment in an aquifer of a semi-arid region (Metline Jebel Raf aquifer, N Tunisia),</p>

	<p>J. of Env Managment, 84; 12-19.</p> <p>Heinl M & Brinkman PJ (1989) A groundwater model of the Nubian aquifer system, Hydrological sciences, 34; 4; 8, 425-449.</p> <p>Kigobe M (2009) Application of a semi-distributed SWAT model to estimate gw recharge in the Lake Kyoga basin of Uganda, in Proceedings of the Kampala Conference, June 2008, IAHS Publ. 334, 2009</p> <p>Mazor E (1982) Rain recharge in the Kalahari - a note on some approaches to the problem, J. of Hydrol., 55; 137-144.</p> <p>Mileham, Taylor, Thompson, et al. (2008) Impact of rainfall distribution on the parameterisation of a soil moisture balance model of groundwater recharge in equatorial Africa, J. of Hydrol., 359; 46, p58.</p> <p>Sandstrom K (1995) Modeling the effects of rainfall variability on groundwater recharge in semi-arid Tanzania, Nordic Hydrology Journal, 26; 313-330</p> <p>Totin, Boko & Boukari (2009) GW recharge mechanisms and water management in the coastal sedimentary basin of Benin, in Proceedings of the Kampala Conference, June 2008, IAHS Publ. 334, 2009</p>
5	<p>Kuells C, Adar E & Udluft P (2000) Resolving patterns of groundwater flow by inverse hydrochemical modelling in a semiarid Kalahari basin, in Tracers and Modelling in Hydrogeology, Proceedings, Belgium, May 2000 , IAHS Publ no.262.</p>