

ISSN 0308-3675

MERLEWOOD RESEARCH AND DEVELOPMENT PAPER

No 93

MERLEWOOD PUBLICATIONS 1974-1985

3rd edition, compiled by

J BECKETT & A NELSON

Institute of Terrestrial Ecology
Merlewood Research Station
Grange-over-Sands
Cumbria
England
LA11 6JU

February 1986



INTRODUCTION

Merlewood Research Station became part of the Institute of Terrestrial Ecology when the latter was formed at the end of 1973. This publication contains a record of the written work of the Station since that time.

The records are taken from the complete database of ITE Staff publications, and are arranged in three sections:

1. Publications in the 'open' literature;
2. Research and Development papers, produced mainly as discussion documents for limited circulation, but also available on request;
3. Contract reports, produced exclusively for customer organisations.

The list has been compiled by John Beckett, of ITE, and by Allan Nelson, of NERC Computing Service, who will be happy to supply information on the programming involved in storing and retrieving the references. The ITE database can be searched by author, title-words, date, location (or any combination of these); requests for searches should be made to either of the above, at Merlewood.

S E ALLEN
Head of Station

February 1986



PUBLICATIONS



- ADAMSON, J.K. 1984.
Land classification as a basis for stratified soil survey:
a study in Cumbria.
Appl. Geogr. (Sevenoaks), 4, 309-320.
- ALLEN, S.E., GRIMSHAW, H.M., PARKINSON, J.A. & QUARMBY, C. 1974.
Chemical analysis of ecological materials.
London: Blackwell Scientific.
- ALLEN, S.E., ed. 1975.
Natural history of the district around Grange-over-Sands.
Grange-over-Sands: Grange and District Natural History Society.
- ALLEN, S.E. 1975.
Soils. In: Natural history of the district around
Grange-over-Sands, edited by S.E. Allen, 10-11.
Grange-over-Sands: Grange and District Natural History Society.
- ALLEN, S.E., GRIMSHAW, H.M., PARKINSON, J.A., QUARMBY, C. &
ROBERTS, J.D. 1976.
Chemical analysis. In: Methods in plant ecology, edited by
S.B. Chapman, 411-466.
Oxford: Blackwell Scientific.
- ALLEN, S.E. 1978.
Chemistry in the Institute of Terrestrial Ecology.
Cambridge: Institute of Terrestrial Ecology.
- ALLEN, S.E. 1984.
The historical development of analytical chemistry in ITE.
Annu. Rep. Inst. terr. Ecol. 1983, 94-97.
- ALLEN, S.E. 1984.
Radionuclides in natural terrestrial ecosystems.
Sci. Total Environ., 35, 285-300.
- (ANDERSON, J.M.), INESON, P. & (HUIISH, S.A.). 1983.
The effects of animal feeding activities on element release from
deciduous forest litter and soil organic matter. In: New trends
in soil biology, edited by P. Lebrun and others, 87-100.
Ottignies-Louvain-la-Neuve: Dieu-Brichart.
- (ANDERSON, J.M.) & INESON, P. 1983.
Interactions between soil arthropods and microorganisms in
carbon, nitrogen and mineral element fluxes from decomposing
leaf litter. In: Nitrogen as an ecological factor, edited by
J.A. Lee, S. McNeill & I.H. Rorison, 413-432.
Oxford: Blackwell Scientific.
- (ANDERSON, J.M.), INESON, P. & (HUIISH, S.A.). 1983.
Nitrogen and cation mobilization by soil fauna feeding on
leaf litter and soil organic matter from deciduous woodlands.
Soil Biol. & Biochem., 15, 463-467.
- (ANDERSON, J.M.) & INESON, P. 1984.
Interactions between microorganisms and soil invertebrates
in nutrient flux pathways of forest ecosystems. In:
Invertebrate / microbial interactions, edited by J.M. Anderson,
A.D.M. Rayner & D.W.H. Walton, 59-88.
Cambridge: Cambridge University Press.

- (ANDERSON, J.M., LEONARD, M.A.), INESON, P. & (HUIISH, S.). 1985.
Faunal biomass: a key component of a general model of nitrogen mineralization.
Soil Biol. Biochem., 17, 735-737.
- (ANDERSON, J.M., HUIISH, S.A.), INESON, P., (LEONARD, M.A. & SPLATT, P.R.). 1985.
Interactions of invertebrates, microorganisms and tree roots in nitrogen and mineral element fluxes in deciduous woodland soils. In: Ecological interactions in soil: plants, microbes and animals, edited by A.H.Fitter, 377-391. (British Ecological Society special publication no.4).
Oxford: Blackwell Scientific.
- BACON, P.J. 1980.
A possible advantage for the "Polish" morph of the mute swan.
Wildfowl, 31, 51-52.
- BACON, P.J. 1980.
Status and dynamics of a mute swan population near Oxford between 1976 and 1978.
Wildfowl, 31, 37-50.
- BACON, P.J. & (MACDONALD, D.W.). 1980.
To control rabies: vaccinate foxes.
New Scientist., 87, 640-645.
- BACON, P.J. 1981.
The consequences of unreported fox rabies.
J. environ. Manage., 13, 195-200.
- BACON, P.J. & (MACDONALD, D.W.). 1981.
Habitat and the spread of rabies.
Nature, Lond., 289, 634-635.
- BACON, P.J. 1981.
Population genetics of *Cygnus olor*. In: Proc. 2nd International Swan Symposium, Sapporo, 1980, 389-394.
Slimbridge: International Waterfowl Research Bureau.
- BACON, P.J. 1981.
Why the Polish swan survives.
Times, 2 Jan.
- BACON, P.J., (BALL, F.G. & MOLLISON, D.). 1984.
Review of a model of rabies control in wild foxes: the "Ontario" model. Report on a workshop.
Rabies Bull. Europe, 8(2), 14-15.
- BACON, P.J. 1985.
Discrete time temporal models of rabies. In: Population dynamics of rabies in wildlife, edited by P.J.Bacon, 147-196.
London: Academic Press.
- BACON, P.J. 1985.
Grebes. In: The encyclopaedia of birds, edited by C.M.Perrins & A.L.A.Middleton, 42-43.
London: Allen & Unwin.
- BACON, P.J., ed. 1985.
Population dynamics of rabies in wildlife.
London: Academic Press.

BACON, P.J. 1985.

Roosting. In: A dictionary of birds, edited by B. Campbell & E. Lack, 517-519.
Calton: Poyser.

BACON, P.J. 1985.

Sensitivity coefficients - a reply to Huson.
Ecol. Model., 27, 153-160.

BACON, P.J. 1985.

A systems analysis of wildlife rabies epizootics. In: Population dynamics of rabies in wildlife, edited by P.J. Bacon, 109-130.
London: Academic Press.

BAILEY, A.D. & (WYNN-WILLIAMS, D.D.). 1982.

Soil microbiological studies at Signy Island, South Orkney Islands.
Bull. Br. antarct. Surv., no.51, 167-191.

BALL, D.F., DALE, J., SHEAIL, J., DICKSON, K.E. & WILLIAMS, W.M. 1981.

Ecology of vegetation change in upland landscapes. Part I: General synthesis. (Bangor occasional paper no.2).
Bangor: Institute of Terrestrial Ecology.

BALL, D.F., DALE, J., SHEAIL, J. & HEAL, O.W. 1982.

Vegetation change in upland landscapes.
Cambridge: Institute of Terrestrial Ecology.

BELL, M. & (ELLIOTT, H.). 1985.

Changing agricultural policy and the countryside: for better or worse? In: Environmental issues, Seminar D, 13th Summer Annual Meeting, 1-9. (Publication P261).
London: Planning and Transportation Research and Computation Ltd (PTRC).

BELL, M. 1985.

Farm diversification in the EEC: report of the Rural Life Conference 1984.
London: National Council for Voluntary Organisations.

BELL, M. 1985.

Look to the land.
Fmrs' Wkly, 103(6), 79.

BELL, M. 1985.

New CAP angles from the EEC.
Chart. Surv. Wkly, 12, 373-374.

BENEFIELD, C.B., HOWARD, P.J.A. & HOWARD, D.M. 1977.

The estimation of dehydrogenase activity in soil.
Soil Biol. & Biochem., 9, 67-70.

BENHAM, D.G. & (MELLANBY, K.) 1978.

A device to exclude dust from rainwater samples.
Weather, Lond., 33, 151-154.

BENHAM, D.G. & HARRISON, A.F. 1980.

Modification of a concrete mixer for the sieving of soils.
J. appl. Ecol., 17, 203-205.

- BENHAM, D.G. & GEORGE, D.G. 1981.
A portable system for measuring water temperature, conductivity, dissolved oxygen, light attenuation and depth of sampling.
Freshwat. Biol., 11, 459-471.
- BENHAM, D.G. 1985.
A freeze concentrator for dewatering aqueous samples.
Lab. Pract., 34(9), 126-128.
- (BIGNELL, D.E., OSKARSSON, H., ANDERSON, J.M.), INESON, P. & (WOOD, T.G.). 1983.
Structure, microbial associations and function of the so-called "mixed segment" of the gut in two soil-feeding termites, *Procubitermes aburiensis* and *Cubitermes severus* (Termitidae, Termitinae).
J. Zool., 201, 445-480.
- (BIRKHEAD, M.), BACON, P.J. & (WALTER, P.). 1983.
Factors affecting the breeding success of the mute swan *Cygnus olor*.
J. Anim. Ecol., 52, 727-741.
- (BLISS, L.C.), HEAL, O.W. & (MOORE, J.J.), eds. 1981.
Tundra ecosystems: a comparative analysis. (International Biological Programme 25).
Cambridge: Cambridge University Press.
- BOCOCK, K.L., JEFFERS, J.N.R., LINDLEY, D.K., ADAMSON, J.K. & (GILL, C.A.) 1977.
Estimating woodland soil temperature from air temperature and other climatic variables.
Agric. Meteorol., 18, 351-372.
- BOCOCK, K.L. 1979.
Radionuclides in terrestrial ecosystems.
Annu. Rep. Inst. terr. Ecol., 1978, 12-14.
- BOCOCK, K.L. 1981.
Radionuclides in terrestrial ecosystems; a review of their distribution and movement.
Cambridge: Institute of Terrestrial Ecology.
- BOCOCK, K.L., BAILEY, A.D. & HORNUNG, M. 1982.
Variation in soil temperature with microrelief and soil depth in a newly planted forest.
J. Soil Sci., 33, 55-62.
- (BRIDSON, J.N.). 1985.
Lipid fraction in forest litter: early stages of decomposition.
Soil Biol. Biochem., 17, 285-290.
- BROWN, A.H.F. 1974.
Nutrient cycles in oakwood ecosystems in N.W. England. In: The British oak, edited by M.G. Morris & F.H. Perring, 141-161. Faringdon: Classey for the Botanical Society of the British Isles.
- BROWN, A.H.F. 1975.
Woods and trees. In: Natural history of the district around Grange-over-Sands, edited by S.E. Allen, 12-14. Grange-over-Sands: Grange and District Natural History Society.

BROWN, A.H.F. 1976.

Coppice woods and changes in management: some aspects of their ecology. An interim review. (CST report no.86).

Banbury: Nature Conservancy Council.

BROWN, A.H.F. & (OOSTERHUIS, L.). 1977.

Management effects in coppice woodlands - the buried seed flora of overgrown coppicewoods. (CST report no.99).

Banbury: Nature Conservancy Council.

BROWN, A.H.F. 1978.

Management effects in lowland coppice woods: summary of progress 1977/78. (CST report no.172).

Banbury: Nature Conservancy Council.

BROWN, A.H.F. 1981.

The recovery of ground vegetation in coppicewood: the significance of buried seed. In: Forest and woodland ecology: an account of research being done in ITE, edited by F.T.Last & A.S.Gardiner, 41-44. (ITE symposium no.8).

Cambridge: Institute of Terrestrial Ecology.

BROWN, A.H.F. & (OOSTERHUIS, L.). 1981.

The role of buried seed in coppicewoods.

Biol Conserv., 21, 19-38.

BROWN, A.H.F. & HARRISON, A.F. 1983.

Effects of tree mixtures on earthworm populations and nitrogen and phosphorus status in Norway spruce (*Picea abies*) stands. In: New trends in soil biology, edited by P.Lebrun and others, 101-108.

Ottignies-Louvain-la-Neuve: Dieu-Brichart.

BUNCE, R.G.H. & (GOODIER, R.) 1974.

Scots pine where it should be: defending the highlands' native forests.

Ctry Life, 156, 1358-1359.

BUNCE, R.G.H., MORRELL, S.K., & STEL, H.E. 1975.

The application of multivariate analysis to regional survey.

J. environ. Manage., 3, 151-165.

BUNCE, R.G.H. 1975.

Vegetation and plants. In: Lake District, 2nd ed. edited by the Countryside Commission, 17-35.

London: HMSO.

BUNCE, R.G.H. 1976.

Native pinewoods in Scotland.

Scott. Wildl., 11(1), 15-18.

BUNCE, R.G.H. 1976.

The present position of the Scots pine seedling studies 1975/76. Interim report. (CST report no.83).

Banbury: Nature Conservancy Council.

BUNCE, R.G.H. 1976.

The range of variation within the pinewoods. (CST report no.85).

Banbury: Nature Conservancy Council.

- BUNCE, R.G.H. & PROCTER, J.E.A. 1977.
Deciduous woodland survey of Scotland. Progress report.
(CST report no.94).
Banbury: Nature Conservancy Council.
- BUNCE, R.G.H. & JEFFERS, J.N.R. eds. 1977.
Native pinewoods of Scotland.
Cambridge: Institute of Terrestrial Ecology.
- BUNCE, R.G.H. 1977.
The range of variation within the pinewoods. In: Native pinewoods of Scotland, edited by R.G.H. Bunce & J.N.R. Jeffers, 10-25.
Cambridge: Institute of Terrestrial Ecology.
- BUNCE, R.G.H., MUNRO, R.C. & PARR, T.W. 1978.
Deciduous woodland survey of Scotland. (CST report no.173).
Banbury: Nature Conservancy Council.
- BUNCE, R.G.H. & (SMITH, R.S.) 1978.
An ecological survey of Cumbria.
Kendal: Cumbria C.C. & Lake District Special Planning Board.
- BUNCE, R.G.H. 1978.
Land classification for ecological survey. In: The assessment of ecological and recreational resources at the regional and national scales, edited by G.C. Barrow, 11-14.
Recreation Ecology Research Group.
- BUNCE, R.G.H., MUNRO, R.C. & PARR, T.W. 1979.
Deciduous woodland survey of Scotland: final report.
(CST report no.250).
Banbury: Nature Conservancy Council.
- BUNCE, R.G.H. & (BUNCE, F.) 1980.
Land classification for ecological survey.
Bainbridge: Yorkshire Dales National Park Committee.
- BUNCE, R.G.H., (PEARCE, L.H. & MITCHELL, C.P.) 1981.
The allocation of land for energy crops in Britain. In: Energy from biomass, edited by W. Palz, P. Chartier & D.O. Hall, 103-109.
London: Applied Science.
- BUNCE, R.G.H. 1981.
British woodlands in an European context. In: Forest and woodland ecology: an account of research being done in ITE, edited by F.T. Last & A.S. Gardiner, 7-11. (ITE symposium no.8).
Cambridge: Institute of Terrestrial Ecology.
- BUNCE, R.G.H. & LAST, F.T. 1981.
How to characterize the habitats of Scotland.
Annu. Rep. Edinburgh Cent. Rural Econ., 1980/81,
(insert) 1-14.
- BUNCE, R.G.H., BARR, C.J. & WHITTAKER, H.A. 1981.
An integrated system of land classification.
Annu. Rep. Inst. terr. Ecol., 1980, 28-33.

BUNCE, R.G.H. 1981.

The scientific basis of evaluation. In: Values and evaluation, edited by C.I. Rose, 22-27. (Discussion paper in conservation no. 36).
London: University College of London.

BUNCE, R.G.H. 1982.

A field key for classifying British woodland vegetation. Part 1.
Cambridge: Institute of Terrestrial Ecology.

BUNCE, R.G.H. 1982.

An integrated approach to landscape ecology. In: Perspectives in landscape ecology: contributions to research, planning and management of our environment, edited by S.P. Tjallingii & A.A. de Veer, 305-306.
Wageningen: Centre for Agricultural Publishing and Documentation.

BUNCE, R.G.H. 1982.

Some effects of man on the structure and composition of Atlantic deciduous forests. In: Struktur und Dynamik von Waldern, edited by H. Dierschke, 681-698.
Vaduz: Cramer.

BUNCE, R.G.H. 1982.

Trees and their habitats; an ecological guide to some European trees grown at Westonbirt Arboretum.
Tetbury: Forestry Commission.

BUNCE, R.G.H., BARR, C.J., WHITTAKER, H.A., (MITCHELL, C.P. & PEARCE, M.L.). 1983.

Estimates of present forest cover in Great Britain. In: Energy from biomass, edited by A. Strub, P. Chartier & G. Schleser, 186-189. (2nd E.C. Conference, Berlin, 1982).
London: Applied Science.

BUNCE, R.G.H. 1983.

Is climbing killing off Lakeland's plant life?
Lakescene, no. 42, 5, 27, 29.

BUNCE, R.G.H., BARR, C.J. & WHITTAKER, H.A. 1983.

A stratification system for ecological sampling. In: Ecological mapping from ground, air and space, edited by R.M. Fuller, 39-46. (ITE symposium no. 10).
Cambridge: Institute of Terrestrial Ecology.

BUNCE, R.G.H. 1984.

The ecology of Grange. In: Grange-over-Sands town appraisal 1982, 36-39.
Grange-over-Sands: Grange Parish Council.

BUNCE, R.G.H. 1984.

Gills. In: Adventure & environmental awareness - report of a conference in the Lake District 17/18th March 1984, 36-38.
Windermere: Adventure and Environmental Awareness Conference Steering Group.

BUNCE, R.G.H. & HEAL, O.W. 1984.

Landscape evaluation and the impact of changing land-use on the rural environment: the problem and an approach. In: Planning and ecology, edited by R.D.Roberts & T.M.Roberts, 164-188.

London: Chapman and Hall.

BUNCE, R.G.H., (TRANter, R.B., THOMPSON, A.M.M., MITCHELL, C.P.) & BARR, C.J. 1984.

Models for predicting changes in rural land use in Great Britain. In: Agriculture and the environment, edited by D.Jenkins, 37-44. (ITE symposium no.13).

Cambridge: Institute of Terrestrial Ecology.

BUNCE, R.G.H., (CLARIDGE, C.J.), BARR, C.J. & (BALDWIN, M.B.). 1984.

The use of simple data in the production of strategic sampling systems - its application to the Highland Region, Scotland.

In: Methodology in landscape ecological research and planning. Vol.4: Methodology of evaluation / synthesis of data in landscape ecology, edited by J.Brandt & P.Agger, 167-171.

(1st Int. Seminar of the International Association of Landscape Ecology).

Roskilde: Roskilde University Centre.

BUNCE, R.G.H. 1984.

The use of simple data in the production of strategic sampling systems. In: Methodology in landscape ecological research and planning. Vol.4: Methodology of evaluation / synthesis of data in landscape ecology, edited by J.Brandt & P.Agger, 45-56.

(1st Int. Seminar of the International Association of Landscape Ecology).

Roskilde: Roskilde University Centre.

BUNCE, R.G.H. 1985.

The Lune Valley - a study in contrast. Cumbria, 35, 413-415.

BUNCE, R.G.H. 1985.

Tramp, tramp, trample, trample. Guardian, 30 March, 21.

BYRNE, A.R., (DERMELJ, M. & VAKSELJ, T.) 1979.

Silver accumulation by fungi.

Chemosphere, 10, 815-821.

CALLAGHAN, T.V. 1974.

Intraspecific variation in *Phleum alpinum* L. with special reference to Polar populations.

Arctic alpine Res., 6, 361-401.

CALLAGHAN, T.V., (SMITH, R.I.L. & WALTON, D.W.H.) 1976.

The IBP bipolar botanical project.

Phil. Trans. R. Soc. B, 274, 315-319.

CALLAGHAN, T.V. & COLLINS, N.J. 1976.

Strategies of growth and population dynamics of tundra plants.

1. Introduction.

Oikos, 27, 383-388.

CALLAGHAN, T.V. 1976.

Strategies of growth and population dynamics of tundra plants.
3. Growth and population dynamics of *Carex bigelowii* in an
alpine environment.
Oikos, 27, 402-413.

CALLAGHAN, T.V. 1977.

Adaptive strategies in the life cycles of South Georgian
graminoid species. In: Adaptations within antarctic ecosystems,
edited by G.A.Llano, 981-1002.
Washington, D.C.: Smithsonian Institution.

CALLAGHAN, T.V., COLLINS, N.J. & (CALLAGHAN, C.H.) 1978.

Strategies of growth and population dynamics of tundra plants.
4. Photosynthesis, growth and reproduction of *Hylocomium*
splendens and *Polytrichum commune* in Swedish Lapland.
Oikos, 31, 73-88.

CALLAGHAN, T.V. 1980.

Age-related patterns of nutrient allocation in *Lycopodium*
annotinum from Swedish Lapland. Strategies of growth and
population dynamics of tundra plants 5.
Oikos, 35, 373-386.

CALLAGHAN, T.V., MILLAR, A., POWELL, D. & LAWSON, G.J. 1980.

A conceptual approach to plants as a renewable source of
energy, with particular reference to Great Britain.
Annu. Rep. Inst. terr. Ecol., 1979, 23-34.

CALLAGHAN, T.V., SCOTT, R., LAWSON, G.J. & WHITTAKER, H.A. 1981.

An experimental assessment of native and naturalised species
of plants as renewable sources of energy in Great Britain. In:
Proceedings of the First Coordination Meeting of Contractors,
Energy from Biomass (Project E), Amsterdam, 1980, 23-25.
(EUR 7160).
Luxembourg: Commission of the European Communities.

CALLAGHAN, T.V., SCOTT, R. & LAWSON, G.J. 1981.

An experimental assessment of native and naturalised species
of plants as renewable sources of energy in Great Britain.
In: Proceedings of the Coordination Meeting of Contractors,
Energy from Biomass (Project E), Copenhagen, 1981, 13-19.
Luxembourg: Commission of the European Communities.

CALLAGHAN, T.V., LAWSON, G.J., SCOTT, R. & WHITTAKER, H.A. 1981.

Fuels from non-woody plants. In: Energy for rural and island
communities, edited by J.Twidell, 105-113.
Oxford: Pergamon.

CALLAGHAN, T.V. & COLLINS, N.J. 1981.

Life cycles, population dynamics and the growth of tundra
plants. In: Tundra ecosystems: a comparative analysis, edited
by L.C.Bliss, O.W.Heal & J.J.Moore, 257-284. (International
Biological Programme 25).
Cambridge: Cambridge University Press.

- CALLAGHAN, T.V., SCOTT, R., WHITTAKER, H.A. & LAWSON, G.J. 1981.
Selected natural and alien plant species as renewable sources of energy in Great Britain - experimental assessment and implementation. In: Energy from biomass, edited by W.Palz, P.Chartier & D.O.Hall, 90-96. (1st E.C.Conference, Brighton, 1980).
London: Applied Science.
- CALLAGHAN, T.V., (CARRUTHERS, S.P. & MARGARIS, N.S.). 1982.
Agricultural wastes and energy crops. In: Energy from biomass, edited by G.Grassi & W.Palz, 2-6. (Energy from biomass series vol.3).
Dordrecht: Reidel.
- CALLAGHAN, T.V., SCOTT, R. & LAWSON, G.J. 1982.
Biofuel production from natural vegetation in Great Britain. In: Energy from biomass, edited by G.Grassi & W.Palz, 30-36. (Energy from biomass series vol.3).
Dordrecht: Reidel.
- CALLAGHAN, T.V., LAWSON, G.J. & SCOTT, R. 1982.
Bracken as an energy crop? In: Solar world forum, edited by D.O.Hall & J.Morton, vol.2, 1239-1247.
Oxford: Pergamon.
- CALLAGHAN, T.V., SCOTT, R., LAWSON, G.J. & PROCTOR, A.M. 1984.
An experimental assessment of native and naturalised species of plants as renewable sources of energy in Great Britain. In: Energy from biomass, edited by W.Palz & D.Pirrwitz, 57-65. (Energy from biomass series vol.5).
Dordrecht: Reidel.
- CALLAGHAN, T.V. 1984.
Growth and translocation in a clonal southern hemisphere sedge, *Uncinia meridensis*.
J. Ecol., 72, 529-546.
- CALLAGHAN, T.V., LAWSON, G.J., MAINWARING, A.M. & SCOTT, R. 1985.
The effect of nutrient application on plant and soil nutrient content in relation to biomass harvesting. In: Energy from biomass, edited by W.Palz, J.Coombs & D.O.Hall, 412-416. (3rd E.C.Conference, Venice, 1984).
London: Elsevier Applied Science.
- CALLAGHAN, T.V., BACON, P.J., LINDLEY, D.K. & (MOGHRABY, A.I.el). 1985.
The energy crisis in the Sudan: alternative supplies of biomass. Biomass, 8, 217-232.
- CALLAGHAN, T.V. 1985.
Plants and primary production - are we making the most of our resources?
Agric. Prog., 60, 14-20.
- CALLAGHAN, T.V. & (EMANUELSSON, U.). 1985.
Population structure and processes of tundra plants and vegetation. In: The population structure of vegetation, edited by J.White, 399-439.
Dordrecht: Junk.

- CALLAGHAN, T.V., LAWSON, G.J. & SCOTT, R. 1985.
The potential of natural vegetation as a source of biomass energy. In: Energy from biomass, edited by W. Palz, J. Coombs & D.O. Hall, 109-116. (3rd E.C. Conference, Venice, 1984).
London: Elsevier Applied Science.
- CALLAGHAN, T.V. & (SHEFFIELD, E.). 1985.
Pteridium aquilinum: weed or resource?
Proc. R. Soc. Edinb., 86B, 461.
- (CHARD, J.M., GRAY, T.R.G.) & FRANKLAND, J.C. 1983.
Antigenicity of *Mycena galopus*.
Trans. Br. mycol. Soc., 81, 503-511.
- (CHARD, J.M., GRAY, T.R.G.) & FRANKLAND, J.C. 1985.
Purification of an antigen characteristic for *Mycena galopus*.
Trans. Br. mycol. Soc., 84, 235-241.
- (CHARD, J.M., GRAY, T.R.G.) & FRANKLAND, J.C. 1985.
Use of an anti-*Mycena galopus* serum as an immunofluorescence reagent.
Trans. Br. mycol. Soc., 84, 243-249.
- (CHEN, L-Z.) & LINDLEY, D.K. 1982.
Studies on primary production in Hampsfell bracken grassland ecosystem of England. >In Chinese\
Acta Phytoecol. Geobot. Sin., 6, 105-119.
- (CHEN, L-Z.) & LINDLEY, D.K. 1982.
The study on the litter decomposition in a bracken grassland ecosystem on Hampsfell in England. >In Chinese\
Acta Phytoecol. Geobot. Sin., 6, 302-313.
- (CHEN, L-Z.) & LINDLEY, D.K. 1983.
Nutrient cycling in Hampsfell bracken ecosystem, England.
>In Chinese\
Acta bot. sin., 25, 67-74.
- COLLINS, N.J. & CALLAGHAN, T.V. 1978.
Bryophyte ecophysiology in polar regions.
Annu. Rep. Inst. terr. Ecol., 1977, 11-16.
- COLLINS, N.J. & CALLAGHAN, T.V. 1980.
Predicted patterns of photosynthetic production in maritime Antarctic mosses.
Ann. Bot., 45, 601-620.
- (COLLINS, V.G.), D'SILVA, B.T. & LATTER, P.M. 1978.
Microbial populations in peat. In: Production ecology of British moors and montane grasslands, edited by O.W. Heal & D.F. Perkins, 94-112.
Berlin: Springer.
- (CRISP, D.T.) & HOWSON, G. 1982.
Effect of air temperature upon mean water temperature in streams in the north Pennines and English Lake District.
Freshwater Biol., 12, 359-367.
- (CUI, Q.) & LAWSON, G.J. 1982.
A new model of single populations. [In Chinese].
Acta ecol. Sin., 2, 401-415.

- (CUI,Q.) & LAWSON,G.J. 1982.
Study on models of single populations: an expansion
of the logistic and exponential equations.
J. theor. Biol., 98, 645-659.
- (CUI,Q.), LAWSON,G.J. & (GAO,D.). 1984.
Models of single populations: development of
equations used in microorganism cultures.
Biotechnol. & Bioeng., 26, 682-686.
- (DE JONG,R.P.) & BACON,P.J. 1979.
Variation in cohesion of a brood of mute swans.
Wildfowl, 30, 86-89.
- DIGHTON,J., HARRISON,A.F. & MASON,P.A. 1981.
Is the mycorrhizal succession on trees related to
nutrient uptake?
J. Sci. Fd Agric., 32, 629-630.
- DIGHTON,J. 1983.
Phosphatase production by mycorrhizal fungi.
Pl. Soil, 71, 455-462.
- DIGHTON,J. & HARRISON,A.F. 1983.
Phosphorus nutrition of lodgepole pine and Sitka spruce
stands as indicated by a root bioassay.
Forestry, 56, 33-43.
- DIGHTON,J. & MASON,P.A. 1985.
Mycorrhizal dynamics during forest tree development. In:
Developmental biology of higher fungi, edited by D.Moore and
others, 117-139.
Cambridge: Cambridge University Press.
- (ELENA-ROSSELLO,R.) & BUNCE,R.G.H. 1984.
Aplicacion del metodo ITE a la Peninsula Iberica:
consideraciones metodologicas y utilidad en la estimacion
de la productividad forestal.
An. Inst. nac. Invest. agr. Ser. for., 8, 45-62.
- (FLANAGAN,P.W.), FRENCH,D.D., HEAL,O.W. & LINDLEY,D.K. 1974.
Microbiology and decomposition data bank (MAD). In: Soil
organisms and decomposition in tundra, edited by A.J.Holding
and others, 389-395.
Stockholm: IBP Tundra Biome Steering Committee.
- (FORREST,G.I.) & SMITH,R.A.H. 1975.
The productivity of a range of blanket bog vegetation types in
the northern Pennines.
J. Ecol., 63, 173-202.
- FRANKLAND,J.C. & (COLLINS,V.G.) 1974.
A bacterium in Quercus leaf litter, resistant to sterilizing
doses of gamma-radiation.
Soil Biol. & Biochem., 6, 125-126.
- FRANKLAND,J.C. 1974.
Decomposition of lower plants. In: Biology of plant litter
decomposition, edited by C.H.Dickinson & G.J.F.Pugh, vol.1,
3-36.
London: Academic Press.

FRANKLAND, J.C. 1974.

Importance of phase-contrast microscopy for estimation of total fungal biomass by the agar-film technique.

Soil Biol. & Biochem., 6, 409-410.

FRANKLAND, J.C. 1975.

Estimation of live fungal biomass.

Soil Biol. & Biochem., 7, 339-340.

FRANKLAND, J.C. 1975.

Fungal decomposition of leaf litter in a deciduous woodland.

In: Biodegradation et humification, edited by G.Kilbertus and others, 33-40.

Sarreguemines: Pierron.

FRANKLAND, J.C. 1976.

Decomposition of bracken litter.

Bot. J. Linn. Soc., 73, 133-144.

FRANKLAND, J.C., LINDLEY, D.K. & (SWIFT, M.J.) 1978.

A comparison of two methods for the estimation of mycelial biomass in leaf litter.

Soil Biol. & Biochem., 10, 323-333.

FRANKLAND, J.C., BAILEY, A.D. & COSTELOE, P.L. 1979.

Ecology of a woodland toadstool *Mycena galopus*.

Annu. Rep. Inst. terr. Ecol., 1978, 26-28.

FRANKLAND, J.C., BAILEY, A.D., (GRAY, T.R.G. & HOLLAND, A.A.).

1981.

Development of an immunological technique for estimating mycelial biomass of *Mycena galopus* in leaf litter.

Soil Biol. & Biochem., 13, 87-92.

FRANKLAND, J.C. 1981.

Mechanisms in fungal successions. In: The fungal community: its organization and role in the ecosystem, edited by

D.T.Wicklowsky & G.C.Carroll, 403-426.

New York: Dekker.

FRANKLAND, J.C. 1982.

Biomass and nutrient cycling by decomposer basidiomycetes.

In: Decomposer basidiomycetes; their biology and ecology, edited by J.C.Frankland, J.N.Hedger & M.J.Swift, 241-261.

(British Mycological Society symposium 4).

Cambridge: Cambridge University Press.

FRANKLAND, J.C., (HEDGER, J.N. & SWIFT, M.J.), eds. 1982.

Decomposer basidiomycetes; their biology and ecology.

(British Mycological Society symposium 4).

Cambridge: Cambridge University Press.

FRANKLAND, J.C. 1984.

Autecology and the mycelium of a woodland litter decomposer.

In: The ecology and physiology of the fungal mycelium, edited by D.H.Jennings & A.D.M.Rayner, 241-260. (British Mycological Society Symposium 8).

Cambridge: Cambridge University Press.

- FRANKLAND, J.C. & HARRISON, A.F. 1985.
Mycorrhizal infection of *Betula pendula* and *Acer pseudoplatanus*:
relationships with seedling growth and soil factors.
New Phytol., 101, 133-151.
- FRENCH, D.D. 1974.
Classification of IBP Tundra Biome sites based on climate and
soil properties. In: Soil organisms and decomposition in tundra,
edited by A.J. Holding and others, 3-25.
Stockholm: IBP Tundra Biome Steering Committee.
- FRENCH, D.D. & HOWSON, G. 1982.
Cellulose decay rates measured by a modified cotton strip
method.
Soil Biol. & Biochem., 14, 311-312
- GARDINER, A.S. 1974.
The genetic improvement of broad leaved species.
Forestry, suppl., 105-108.
- GARDINER, A.S. 1974.
A history of the taxonomy and distribution of the native oak
species. In: The British oak, edited by M.G. Morris &
F.H. Perring, 13-26.
Faringdon: Classey for the Botanical Society of the British
Isles.
- GARDINER, A.S. 1975.
The sessile oak: anomalies of the binomial *Quercus petraea*.
Trans. bot. Soc. Edinb., 42, 261-263.
- GARDINER, A.S. 1978.
Clonal differences in the leaf-shape of *Betula pubescens* Ehrh.
Annu. Rep. Inst. terr. Ecol., 1977, 25-28.
- GARDINER, A.S. & PEARCE, N.J. 1979.
Leaf-shape as an indicator of introgression between *Betula*
pendula and *B. pubescens*.
Trans. bot. Soc. Edinb., 43, 91-103.
- GARDINER, A.S. 1981.
Betula pubescens - the affinities of types in the Scottish
highlands with those of continental Europe: a study of leaf
morphology or the application of morphometrics. In: Forest and
woodland ecology: an account of research being done in ITE,
edited by F.T. Last & A.S. Gardiner, 89-93. (ITE symposium no.8).
Cambridge: Institute of Terrestrial Ecology.
- GARDINER, A.S. 1981.
The finest "all-round" birch in England.
Arboric. J., 5, 129.
- GARDINER, A.S. 1984.
Taxonomy of infraspecific variation in *Betula pubescens* Ehrh.,
with particular reference to the Scottish Highlands.
Proc. R. Soc. Edinb., 85B, 13-26.
- (GIBSON, R.M.) & BACON, P.J. 1985.
Nightjars drinking in flight.
Br. Birds, 78, 596.

- (GOODIER, R.) & BUNCE, R.G.H. 1976.
The native pinewoods of Scotland: the current state of the resource. (CST report no.84).
Banbury: Nature Conservancy Council.
- (GOODIER, R.) & BUNCE, R.G.H. 1977.
The native pinewoods of Scotland: the current state of the resource. In: Native pinewoods of Scotland, edited by R.G.H. Bunce & J.N.R. Jeffers, 78-87.
Cambridge: Institute of Terrestrial Ecology.
- GORE, A.J.P. 1975.
An experimental modification of upland peat vegetation.
J. appl. Ecol., 12, 349-366.
- GRAY, A.J. & SCOTT, R. 1980.
A genecological study of *Puccinellia maritima* Huds. (Parl.).
I. Variation estimated from single-plant samples from British populations.
New Phytol., 85, 89-107.
- GRIMSHAW, H.M. 1975.
Bay and estuaries. In: Natural history of the district around Grange-over-Sands, edited by S.E. Allen, 46-49.
Grange-over-Sands: Grange and District Natural History Society.
- GRIMSHAW, H.M. 1980.
Some aspects of the nutrient status of native British plants.
Annu. Rep. Inst. terr. Ecol., 1979, 46-48.
- (GWYNNE, D.), MILNER, C. & HORNING, M. 1974.
The vegetation and soils of Hirta. In: Island survivors: the ecology of the Soay sheep of St. Kilda, edited by P.A. Jewell, C. Milner & J.M. Boyd, 36-87.
London: Athlone Press.
- (HALL, S.J.G.) & BUNCE, R.G.H. 1984.
Vegetation survey of Chillingham Park, Northumberland.
Trans. nat. Hist. Soc. Northumb., 52, 5-14.
- HARRISON, A.F. 1975.
Estimation of readily-available phosphate in some English Lake District woodland soils.
Oikos, 26, 170-176.
- HARRISON, A.F. 1978.
Phosphorus cycles of forest and upland grassland ecosystems and some effects of land management practices. In: Phosphorus in the environment, edited by R. Porter & D.W. Fitzsimmons, 175-199.
Amsterdam: Elsevier.
- HARRISON, A.F. & HELLIWELL, D.R. 1979.
A bioassay for comparing phosphorus availability in soils.
J. appl. Ecol., 16, 497-505.
- HARRISON, A.F. & PEARCE, H.T. 1979.
Seasonal variation of phosphatase activity in woodland soils.
Soil Biol. & Biochem., 11, 405-410.

- HARRISON, A.F. 1979.
Variation of four phosphorus properties in woodland soils.
Soil Biol. & Biochem., 11, 393-403.
- HARRISON, A.F. & BOCOCK, K.L. 1981.
Estimation of soil bulk-density from loss-on-ignition values.
J. appl. Ecol., 18, 919-927.
- HARRISON, A.F. & (HELLIWELL, D.R.). 1981.
Growth of sycamore and birch in relation to soil chemical properties. In: Forest and woodland ecology: an account of research being done in ITE, edited by F.T. Last & A.S. Gardiner, 75-77. (ITE symposium no.8).
Cambridge: Institute of Terrestrial Ecology.
- HARRISON, A.F. 1981.
Phosphorus in woodland soils.
Annu. Rep. Inst. terr. Ecol., 1980, 36-43.
- HARRISON, A.F. 1982.
32P-method to compare rates of mineralization of labile organic phosphorus in woodland soils.
Soil Biol. & Biochem., 14, 337-341.
- HARRISON, A.F. 1982.
Labile organic phosphorus mineralization in relationship to soil properties.
Soil Biol. & Biochem., 14, 343-351.
- HARRISON, A.F. 1983.
Relationship between intensity of phosphatase activity and physico-chemical properties in woodland soils.
Soil Biol. & Biochem., 15, 93-99.
- HARRISON, A.F. 1985.
Effects of environment and management on phosphorus cycling in terrestrial ecosystems.
J. environ. Manage., 20, 163-179.
- (HEADLEY, A.D.), CALLAGHAN, T.V. & (LEE, J.A.). 1985.
The phosphorus economy of the evergreen tundra plant, *Lycopodium annotinum*.
Oikos, 45, 235-245.
- HEAL, O.W. & (MACLEAN, S.F., Jr). 1974.
Comparative productivity in ecosystem - secondary productivity.
Proc. int. Congr. Ecology, 1st, The Hague, 1974, 37.
Wageningen: Centre for Agricultural Publishing and Documentation.
- HEAL, O.W., HOWSON, G., FRENCH, D.D. & JEFFERS, J.N.R. 1974.
Decomposition of cotton strips in tundra. In: Soil organisms and decomposition in tundra, edited by A.J. Holding and others, 341-362.
Stockholm: IBP Tundra Biome Steering Committee.
- HEAL, O.W. & FRENCH, D.D. 1974.
Decomposition of organic matter in tundra. In: Soil organisms and decomposition in tundra, edited by A.J. Holding and others, 279-309.
Stockholm: IBP Tundra Biome Steering Committee.

HEAL, O.W. & (MACLEAN, S.F., Jr). 1975.

Comparative productivity in ecosystems - secondary productivity.

In: Unifying concepts in ecology, edited by W.H. van Dobben & R.H. Lowe-McConnell, 89-108.

The Hague: Junk; Wageningen: Pudoc.

HEAL, O.W., JONES, H.E. & (WHITTAKER, J.B.) 1975.

Moor House, U.K. In: Structure and function of tundra ecosystems, edited by T. Rosswall &

O.W. Heal, 295-320.

Stockholm: Swedish Natural Science Research Council.

HEAL, O.W. & PERKINS, D.F. 1976.

IBP studies on montane grassland and moorlands.

Phil. Trans. R. Soc. B, 274, 295-314.

HEAL, O.W. 1977.

Upland land use.

Annu. Rep. Inst. terr. Ecol., 1976, 10-15.

HEAL, O.W. & (SMITH, R.A.H.) 1978.

Introduction and site description (Moor House). In: Production ecology of British moors and montane grasslands, edited by

O.W. Heal & D.F. Perkins, 3-16.

Berlin: Springer.

HEAL, O.W. & PERKINS, D.F. 1978.

Production ecology of British moors and montane grasslands.

Annu. Rep. Inst. terr. Ecol., 1977, 5-7.

HEAL, O.W. & PERKINS, D.F., eds. 1978.

Production ecology of British moors and montane grasslands.

Berlin: Springer.

HEAL, O.W., LATTER, P.M. & HOWSON, G. 1978.

A study of the rates of decomposition of organic matter. In:

Production ecology of British moors and montane grasslands,

edited by O.W. Heal & D.F. Perkins, 136-159.

Berlin: Springer.

HEAL, O.W. 1979.

Consequences of non-assimilation of nitrogen by plants.

In: Nitrogen assimilation of plants, edited by E.J. Hewitt &

C.V. Cutting, 625-636.

London: Academic Press.

HEAL, O.W. 1979.

Decomposition and nutrient release in even-aged plantations.

In: The ecology of even-aged forest plantations, edited by

E.D. Ford, D.C. Malcolm & J. Atterson, 257-291.

Cambridge: Institute of Terrestrial Ecology.

HEAL, O.W. 1980.

Fauna of heathlands in the United Kingdom.

Bull. Ecol., 11, 413-420.

- HEAL, O.W., (FLANAGAN, P.W.), FRENCH, D.D. & (MACLEAN, S.F., Jr).
1981.
Decomposition and accumulation of organic matter. In: Tundra ecosystems: a comparative analysis, edited by L.C. Bliss, O.W. Heal & J.J. Moore, 587-633. (International Biological Programme 25).
Cambridge: Cambridge University Press.
- HEAL, O.W. 1982.
Effects of deposition of sulphur and nitrogen compounds on soil biology. In: Proc. Workshop on Ecological Effects of Deposited Sulphur and Nitrogen Compounds, Royal Society, 1982, 3.
London: Royal Society.
- HEAL, O.W. 1982.
Land use. In: Research needs in forestry, 23-28. (Proc. of a Workshop, London, 1982).
Swindon: Natural Environment Research Council.
- HEAL, O.W., (SWIFT, M.J. & ANDERSON, J.M.). 1982.
Nitrogen cycling in United Kingdom forests: the relevance of basic ecological research.
Phil. Trans. R. Soc. Lond. B, 296, 427-444.
- HEAL, O.W. 1982.
Report of a symposium to honour Charles Darwin, father of soil zoology.
Annu. Rep. Inst. terr. Ecol. 1981, 39-41.
- HEAL, O.W. & HERRILL, A.D. 1983.
The terrestrial ecosystem: an ecological context for radionuclide research. In: Ecological aspects of radionuclide release, edited by P.J. Coughtrey, J.N.B. Bell & T.M. Roberts, 31-46.
Oxford: Blackwell Scientific.
- HEAL, O.W. & INESON, P. 1984.
Carbon and energy flow in terrestrial ecosystems: relevance to microflora. In: Current perspectives in microbial ecology, edited by M.J. Klug & C.A. Reddy, 394-404.
Washington, DC: American Society of Microbiology.
- HEAL, O.W. 1984.
Report on the discussions of the syndicate on uplands.
In: Agriculture and the environment, edited by D. Jenkins, 185-188.
Cambridge: Institute of Terrestrial Ecology.
- HEAL, O.W. & DIGHTON, J. 1985.
Resource quality and trophic structure in the soil system. In: Ecological interactions in soil: plants, microbes and animals, edited by A.H. Fitter, 339-354.
Oxford: Blackwell Scientific.
- HEATH, J., BOCOCK, K.L. & MOUNTFORD, M.D. 1974.
The life history of the millipede *Glomeris marginata* Villers, in north-west England.
Symp. zool. Soc. Lond., no. 32, 433-462.

HELLIWELL, D.R. 1974.

Discount rates in land-use planning.
Forestry, 47, 147-152.

HELLIWELL, D.R. 1974.

Management objectives and their implementation in multipurpose forestry. In: Planning systems and control, Proc. IUFRO joint meeting divisions 3 and 4, Freiburg, 1973, 1-8.
Freiburg: Institut für Forsteinrichtung und forstl. Betriebswirtschaft.

HELLIWELL, D.R. 1974.

Nature dilutes the quality of urban life: notes for the introduction of a discussion. In: Nature in cities, edited by I.C.Laurie.
Manchester: Landscape Research Group, Department of Town and Country Planning, University of Manchester.

HELLIWELL, D.R. 1974.

The value of vegetation for conservation. I. Four land areas in Britain.
J. environ. Manage., 2, 51-74.

HELLIWELL, D.R. 1974.

The value of vegetation for conservation. II. M1 motorway area.
J. environ. Manage., 2, 75-78.

HELLIWELL, D.R. 1975.

The concept of waste and the conservation of nature.
Environ. Conserv., 2, 271-273.

HELLIWELL, D.R. 1975.

Discount rates and environmental conservation.
Environ. Conserv., 2, 199-201.

HELLIWELL, D.R. 1975.

The distribution of woodland plant species in some Shropshire hedgerows.
Biol. Conserv., 7, 61-72.

HELLIWELL, D.R. 1976.

The amenity value of trees and woodlands in urban areas. In: Trees and forests for human settlements, edited by J.W.Andresen, 27-37.
Toronto: Centre for Urban Forestry Studies, Toronto University.

HELLIWELL, D.R. 1976.

The effects of size and isolation on the conservation value of wooded sites in Britain.
J. Biogeogr., 3, 407-416.

HELLIWELL, D.R. 1976.

Perception and preference in landscape appreciation - a review of the literature.
Landscape Res. News, 1(12), 4-6.

HELLIWELL, D.R. 1976.

The small woodland: social benefits: landscape, amenity and recreation. In: The future of the small woodland, 23-30.
Castleton: Peak District National Park Study Centre.

- HELLIWELL, D.R. 1978.
The assessment of landscape preferences.
Landscape Res., 3(3), 15-17.
- HELLIWELL, D.R. 1978.
Floristic diversity in some central Swedish forests.
Forestry, 51, 151-161.
- HELLIWELL, D.R. 1978.
Forestry's long-term environmental role. In: The future of upland Britain, edited by R.B. Tranter, 108-113.
Reading: Centre for Agricultural Strategy, University of Reading.
- HELLIWELL, D.R. 1978.
Preparation of value indices for non-market benefits based on characteristics of the forest environment.
Wld For. Congr., 8th, Jakarta, 1978, no.FQL/25-3.
- HELLIWELL, D.R. 1978.
Survey and evaluation of wildlife on farmland in Britain: an "indicator species" approach.
Biol. Conserv., 13, 63-73.
- HELLIWELL, D.R. & HARRISON, A.F. 1978.
Variations in the growth of different seeds of *Acer pseudoplatanus* and *Betula verrucosa* grown on different soils.
Forestry, 51, 37-46.
- HELLIWELL, D.R. 1979.
Assessment of the value of vegetation lost or gained through road construction. In: The impact of road traffic on plants, edited by D.M. Colwill, J.R. Thompson & A.J. Rutter, 35-40. (TRRL supplementary report 513).
Crowthorne: Transport and Road Research Laboratory.
- HELLIWELL, D.R. & HARRISON, A.F. 1979.
Effects of light and weed competition on the growth of seedlings of four tree species on a range of soils.
Q. Jl For., 73, 160-171.
- HELLIWELL, D.R. 1980.
Germination and growth of *Primula vulgaris* Huds.
Watsonia, 13, 41-47.
- HILL, M.O., BUNCE, R.G.H. & SHAW, M.W. 1975.
Indicator species analysis, a divisive polythetic method of classification, and its application to a survey of native pinewoods in Scotland.
J. Ecol., 63, 597-613.
- HILL, M.O., HORNUNG, M., EVANS, D.F., STEVENS, P.A., ADAMSON, J.K. & BELL, S.A. 1984.
The effects of clear-felling plantation forests.
Annu. Rep. Inst. terr. Ecol. 1983, 9-11.
- HILL, M.O., LATTE, P.M. & (BANCROFT, G.). 1985.
A standard curve for inter-site comparison of cellulose degradation using the cotton strip method.
Can. J. Soil Sci., 65, 605-619.

(HOLDING, A.J., COLLINS, V.G.), FRENCH, D.D., D'SYLVA, B.T. & (BAKER, J.H.). 1974.

Relationship between viable bacterial counts and site characteristics in tundra. In: Soil organisms and decomposition in tundra, edited by A.J. Holding and others, 49-64. Stockholm: IBP Tundra Biome Steering Committee.

(HOLDING, A.J.), HEAL, O.W., (MACLEAN, S.F., Jr & FLANAGAN, P.W.), eds. 1974.

Soil organisms and decomposition in tundra. Stockholm: IBP Tundra Biome Steering Committee.

HORRILL, A.D. 1974.

A preliminary account of the bryophyte flora of Huntingdonshire. Rep. Huntingdon. Fauna Flora Soc., 26th, 1973, 14-34.

HORRILL, A.D. 1975.

Bryophytes. In: Bedford Purlieu: its history, ecology and management, edited by G.F. Peterken & R.C. Welch, 109-112. Abbots Ripton: Institute of Terrestrial Ecology.

HORRILL, A.D. & (GOMM, F.R.). 1975.

Mosses, liverworts and lichens. In: Natural history of the district around Grange-over-Sands, edited by S.E. Allen, 24-27. Grange-over-Sands: Grange and District Natural History Society.

HORRILL, A.D., SYKES, J.M. & (IDLE, E.T.) 1975.

The woodland vegetation of Inchcailloch, Loch Lomond. Trans. bot. Soc. Edinb., 42, 307-334.

HORRILL, A.D. & SYKES, J.M. 1976.

Monitoring studies in north west Scotland. Glasdrum report on first sample March 1976. (CST report no.80). Banbury: Nature Conservancy Council.

HORRILL, A.D. & SYKES, J.M. 1976.

Monitoring studies in north west Scotland: Glen Nant S.S.S.I. Report on first sample, 1975. (CST report no.12). Banbury: Nature Conservancy Council.

HORRILL, A.D. 1976.

Studies on asulam progress report. 1975/76. (CST report no.71). Banbury: Nature Conservancy Council.

HORRILL, A.D. 1976.

Vegetation changes on cessation of grazing. Monitoring bryophytes in Borrowdale. Interim reports 1975/76. (CST report no.77). Banbury: Nature Conservancy Council.

HORRILL, A.D., THOMSON, A.G. & DALE, J. 1977.

The effects of asulam on non-target plant species and communities. Progress report. (CST report no.102). Banbury: Nature Conservancy Council.

HORRILL, A.D. & SYKES, J.M. 1977.

Monitoring studies in N.W. Scotland, Arriundle. Report on first sample. (CST report no.96). Banbury: Nature Conservancy Council.

HORRILL, A.D., DALE, J. & THOMSON, A.G. 1978.

Asulam - its effects on selected plants, plant communities and animals. (CST report no.174).

Banbury: Nature Conservancy Council.

HORRILL, A.D. 1983.

The levels and point to point variation of the radionuclide burden in a Cumbrian saltmarsh environment. In: Ecological aspects of radionuclide release, edited by P.J.Coughtrey, J.N.B.Bell & T.M.Roberts, 199-216.

Oxford: Blackwell Scientific.

HORRILL, A.D. & HOWARD, B.J. 1984.

Problems encountered in obtaining realistic radionuclide transfer factors for sheep. In: Seminar on the environmental transfer to man of radionuclides released from nuclear installations, Brussels, 1983, vol.1, 431-448.

Luxembourg: Commission of the European Communities.

HORRILL, A.D. 1984.

Radionuclide levels and distribution in grazed saltmarsh in west Cumbria.

Environ. Pollut. B, 8, 265-280.

HOWARD, B.J., (MITCHELL, P.C.H., RITCHIE, A., SIMKISS, K. & TAYLOR, M.). 1981.

The composition of intracellular granules from the metal-accumulating cells of the common garden snail (*Helix aspersa*).

Biochem. J., 194, 507-511.

HOWARD, B.J. & (SIMKISS, K.). 1981.

Metal binding by *Helix aspersa* blood.

Comp. Biochem. Physiol. A, 70, 559-561.

HOWARD, B.J. 1985.

Aspects of the uptake of radionuclides by sheep grazing on an estuarine saltmarsh. 1. The influence of grazing behaviour and environmental variability on daily intake.

J. environ. Radioact., 2, 183-198.

HOWARD, B.J. & LINDLEY, D.K. 1985.

Aspects of the uptake of radionuclides by sheep grazing on an estuarine saltmarsh. 2. Radionuclides in sheep tissues.

J. environ. Radioact., 2, 199-213.

HOWARD, D.M. & HOWARD, P.J.A. 1980.

Microbial decomposition of tree and shrub litter. III. Effect of species, source of litter, type of soil, and climate on litter decomposition.

Oikos, 34, 115-124.

HOWARD, P.J.A. & FRANKLAND, J.C. 1974.

Effects of certain full and partial sterilization treatments on leaf litter.

Soil Biol. & Biochem., 6, 117-123.

HOWARD, P.J.A. & HOWARD, D.M. 1974.

Microbial decomposition of tree and shrub leaf litter. I.

Weight loss and chemical composition of decomposing litter.

Oikos, 25, 341-352.

- HOWARD, P.J.A. 1975.
The assessment of biological activity of soils.
Rep. Welsh Soils Discuss. Grp, no.16, 55-71.
- HOWARD, P.J.A. & HOWARD, D.M. 1979.
Microbial decomposition of tree and shrub litter. II.
Respiration of decomposing litter in relation to temperature
and moisture.
Oikos, 33, 457-465.
- HOWARD, P.J.A. & HOWARD, D.M. 1980.
Methods for classifying map data, with particular reference
to indicator species analysis and k-means clustering.
Annu. Rep. Inst. terr. Ecol., 1979, 34-42.
- HOWARD, P.J.A. & HOWARD, D.M. 1981.
Multivariate analysis of map data: a case study in
classification and dissection.
J. environ. Manage., 13, 23-40.
- HOWARD, P.J.A. & HOWARD, D.M. 1985.
The application of rdit analysis to phenological observations.
J. appl. Statist., 12, 29-35.
- (HUGHES, S.W.M.), BACON, P.J. & (FLEGG, J.J.M.). 1979.
The 1975 census of great crested grebe in Britain.
Bird Study, 26, 213-226.
- (HUGHES, S.W.M.) & BACON, P.J. 1980.
Great crested grebes breeding on rivers.
Br. Birds, 73, 349.
- INSON, P., (LEONARD, M.A. & ANDERSON, J.M.). 1982.
Effect of collembolan grazing upon nitrogen and cation
leaching from decomposing leaf litter.
Soil Biol. & Biochem., 14, 601-605.
- INSON, P. & (ANDERSON, J.M.). 1982.
Microbial biomass determination in deciduous leaf litter.
Soil Biol. & Biochem., 14, 607-608.
- INSON, P., JONES, H.E. & HEAL, O.W. 1984.
Regional aspects of forests in Europe: a preliminary study of
Pinus sylvestris. In: State and change of forest ecosystems:
indicators in current research, edited by G.I. Agren, 315-332.
Uppsala: Section of Systems Ecology, Department of Ecology and
Environmental Research, Swedish University of Agricultural
Sciences.
- INSON, P. & (ANDERSON, J.M.). 1985.
Aerobically isolated bacteria associated with the gut and faeces
of the litter feeding macroarthropods *Oniscus asellus* and
Glomeris marginata.
Soil Biol. Biochem., 17, 843-849.
- INSTITUTE OF TERRESTRIAL ECOLOGY. 1978.
Upland land use in England and Wales.
Cheltenham: Countryside Commission.

JEFFERS, J.N.R. 1974.

Future prospects of systems analysis in ecology.
Proc. int. Congr. Ecology, 1st, The Hague, 1974, 255-259.
Wageningen: Centre for Agricultural Publishing and
Documentation.

JEFFERS, J.N.R. 1974.

Merlewood Research Station.
Reg. Bull. Univ. Lancaster, 3(9), 12-13.

JEFFERS, J.N.R. 1974.

Systems analysis and modelling strategies in ecology. In: The use of mathematical models in water pollution control, edited by A. James, vol. 3, 18pp.
Newcastle upon Tyne: School of Advanced Studies in Applied Science, University of Newcastle upon Tyne.

JEFFERS, J.N.R. 1975.

Constraints and limitations of data sources for systems models.
In: Study of agricultural systems, edited by G.E. Dalton, 175-186.
London: Applied Science.

JEFFERS, J.N.R., HOWARD, D.M. & HOWARD, P.J.A. 1976.

An analysis of litter respiration at different temperatures.
Appl. Statist., 25, 139-146.

JEFFERS, J.N.R. 1976.

Can applied statistics be taught?
Bull. appl. Statist., 3, 17-29.

JEFFERS, J.N.R. 1976.

The ecological contribution to planning.
Tn Ctry Plann., 44, 542-545.

JEFFERS, J.N.R. 1976.

Forestry and terrestrial ecology.
Commonw. For. Rev., 55, 109-122.

JEFFERS, J.N.R. 1976.

Future prospects of systems analysis in ecology. In: Critical evaluation of systems analysis in ecosystems research and management, edited by G.W. Arnold & C.T. de Wit, 98-108.
Wageningen: Pudoc.

JEFFERS, J.N.R. 1976.

Systems analysis in forest research.
Congr. int. Un. Forest. Res. Org., 16th, Oslo, 1976, 6, 9-14.

(JEWELL, P.A.), MILNER, C. & (BOYD, J.M.) eds. 1974.

Island survivors: the ecology of the Soay sheep of St. Kilda.
London: Athlone Press.

JONES, H.E. & GORE, A.J.P. 1978.

A simulation of production and decay in blanket bog. In: Production ecology of British moors and montane grasslands, edited by O.W. Heal & D.F. Perkins, 160-186.
Berlin: Springer.

JONES, H.E. & GORE, A.J.P. 1981.

A simulation approach to primary production. In: Tundra ecosystems: a comparative analysis, edited by L.C.Bliss, O.W.Heal & J.J.Moore, 239-256. (International Biological Programme 25).

Cambridge: Cambridge University Press.

JONES, H.E. & BUNCE, R.G.H. 1985.

A preliminary classification of the climate of Europe from temperature and precipitation records.

J. environ. Manage., 20, 17-29.

LAST, F.T. & GARDINER, A.S., eds. 1981.

Forest and woodland ecology: an account of research being done in ITE. (ITE symposium no.8).

Cambridge: Institute of Terrestrial Ecology.

LAST, F.T., MASON, P.A., WILSON, J. & DIGHTON, J. 1982.

Ecology, "epidemiology" and effects of some sheathing (ecto-)mycorrhizal associations.

Annu. Rep. Inst. terr. Ecol. 1981, 35-39.

LATTER, P.M. 1977.

Axenic cultivation of an enchytraeid worm, *Cognettia sphagnetorum*.

Oecologia, 31, 251-254.

LATTER, P.M. 1977.

Decomposition of a moorland litter, in relation to *Marasmius androsaceus* and soil fauna.

Pedobiologia, 17, 418-427.

LATTER, P.M. & HOWSON, G. 1977.

The use of cotton strips to indicate cellulose decomposition in the field.

Pedobiologia, 17, 145-155.

LATTER, P.M. & HOWSON, G. 1978.

Studies on the microfauna of blanket bog with particular reference to Enchytraeidae. II. Growth and survival of *Cognettia sphagnetorum* on various substrates.

J. Anim. Ecol., 47, 425-448.

LATTER, P.M. 1984.

The use of wood veneer in decomposition experiments.

Appl. Biochem. Biotechnol., 9, 371.

LAWSON, G.J. & CALLAGHAN, T.V. 1981.

Natural vegetation as a renewable energy resource in Great Britain. In: Energy from biomass, edited by W.Palz, P.Chartier & D.O.Hall, 83-89. (1st E.C.Conference, Brighton, 1980).

London: Applied Science.

LAWSON, G.J., CALLAGHAN, T.V. & SCOTT, R. 1983.

Biofuels from natural vegetation in the United Kingdom: the management of novel energy crops. In: Energy from biomass, edited by A.Strub, P.Chartier & G.Schleser, 212-221. (2nd E.C.Conference, Berlin, 1982).

London: Applied Science.

LAWSON, G.J. & CALLAGHAN, T.V. 1983.

Primary productivity and the prospects for biofuels in the United Kingdom.

Int. J. Biometeorol., 27, 197-218.

LAWSON, G.J., CALLAGHAN, T.V. & SCOTT, R. 1984.

Renewable energy from plants: bypassing fossilization.

Adv. ecol. Res., 14, 57-113.

LAWSON, G.J. 1985.

Decomposition and nutrient cycling in *Rostkovia magellanica* from two contrasting bogs on South Georgia. In: Antarctic nutrient cycles and food webs, edited by W.R. Siegfried and others, 211-220.

Berlin: Springer.

(LEWIS, M.C.) & CALLAGHAN, T.V. 1976.

Tundra. In: Vegetation and the atmosphere, edited by J.L. Monteith, vol.2, 399-433.

London: Academic Press.

LINDLEY, D.K. 1976.

Bevey-Valley Woodlands NNR. 1. Stem numbers by size, class and species. 2. Total stem numbers and conventional volume per hectare. (CST report no.58).

Banbury: Nature Conservancy Council.

LINDLEY, D.K. 1976.

Dendles-Wood. Total stem numbers and conventional volume per hectare. (CST report no.118).

Banbury: Nature Conservancy Council.

LINDLEY, D.K. 1976.

Development of tree enumeration techniques. A data processing system. (CST report no.56).

Banbury: Nature Conservancy Council.

LINDLEY, D.K. 1976.

Lady-Park Wood. 1. Stem numbers by size, class and species.

2. Total stem numbers and conventional volume per hectare.

(CST report no.59).

Banbury: Nature Conservancy Council.

LINDLEY, D.K. 1976.

Rodney-Stoke Woods NNR. 1. Stem number by size, class and species. 2. Total stem numbers and conventional volume per hectare. (CST report no.57).

(CST report no.57).

Banbury: Nature Conservancy Council.

LINDLEY, D.K. & MILNER, C. 1981.

Severn tidal power: systems analysis and modelling techniques. (Severn tidal power 90).

London: Department of Energy.

LOWE, V.P.W. & GARDINER, A.S. 1974.

A re-examination of the subspecies of the red deer (*Cervus elaphus*) with particular reference to the stocks in Britain.

J. Zool., 174, 185-201.

- LOWE, V.P.W. & GARDINER, A.S. 1975.
Hybridization between red deer (*Cervus elaphus*) and sika deer (*Cervus nippon*) with particular reference to stocks in N.W. England.
J. Zool., 177, 553-566.
- LOWE, V.P.W. & GARDINER, A.S. 1976.
The implications of the hybrid deer (red x sika) on Cartmel Fell for the native deer of the Lake District.
Deer, 4, 28-32.
- LOWE, V.P.W. 1977.
Pinewoods as habitats for mammals. In: Native pinewoods of Scotland, edited by R.G.H. Bunce & J.N.R. Jeffers, 103-111.
Cambridge: Institute of Terrestrial Ecology.
- LOWE, V.P.W. 1977.
Red deer. In: The handbook of British mammals, 2nd ed. edited by G.B. Corbet & H.N. Southern, 411-423.
Oxford: Blackwell Scientific.
- LOWE, V.P.W. 1977.
Sika deer. In: The handbook of British mammals, 2nd ed. edited by G.B. Corbet & H.N. Southern, 423-428.
Oxford: Blackwell Scientific.
- LOWE, V.P.W. 1980.
Variation in digestion of prey by the tawny owl (*Strix aluco*).
J. Zool., 192, 283-293.
- LOWE, V.P.W. & GARDINER, A.S. 1983.
Is the British squirrel (*Sciurus vulgaris leucourus* Kerr) British?
Mammal Rev., 13, 57-67.
- LOWE, V.P.W. & GARDINER, A.S. 1983.
The origins of the Petworth roe deer.
Deer, 6, 17-19.
- (MACDONALD, D.W.), BUNCE, R.G.H. & BACON, P.J. 1981.
Fox populations, habitat characterization and rabies control.
J. Biogeogr., 8, 145-151.
- (MACDONALD, D.W.) & BACON, P.J. 1982.
Fox society, contact rate and rabies epizootiology.
Comp. Immun. Microbiol. Infect. Dis., 5, 247-256.
- (MACTAGGART, H.S.), LOWE, V.P.W., (BARDEN, P.J. & GELLATLY, J.B.M.). 1981.
Copper status of red deer on the island of Rhum.
Vet. Rec., 109, 155-157.
- MASON, P.A., DIGHTON, J., LAST, F.T. & WILSON, J. 1983.
Procedure for establishing sheathing mycorrhizas on tree seedlings.
For. Ecol. Manage., 5, 47-53.
- MILLER, G.R., MILES, J. & HEAL, O.W. 1984.
Moorland management: a study of Exmoor. A report commissioned by the Countryside Commission.
Cambridge: Institute of Terrestrial Ecology.

MILNER, C. & (GOODIER, R.) 1974.

The natural environment in countryside planning. In: The natural environment of Shetland, edited by R. Goodier, 164-171. Edinburgh: Nature Conservancy Council.

MILNER, C. & (GWYNNE, D.) 1974.

The Soay sheep and their food supply. In: Island survivors; the ecology of the Soay sheep of St. Kilda, edited by P.A. Jewell, C. Milner & J.M. Boyd, 273-325. London: Athlone Press.

MILNER, C. 1975.

Management information system for Shetland. Initial report. (CST report no.3).
Banbury: Nature Conservancy Council.

MILNER, C. 1975.

Report to NCC on some aspects of the ecology of Shetland.
I. Summary report and introduction. (CST report no.14).
Banbury: Nature Conservancy Council.

MILNER, C. 1975.

Report to NCC on some aspects of the ecology of Shetland.
II. A general introduction to the Shetland survey. 2.1. Project plan. (CST report no.15).
Banbury: Nature Conservancy Council.

MILNER, C. 1975.

Report to NCC on some aspects of the ecology of Shetland.
II. A general introduction to the Shetland survey. 2.2. Methodology of the survey. (CST report no.17).
Banbury: Nature Conservancy Council.

MILNER, C. 1975.

Report to NCC on some aspects of the ecology of Shetland.
III. The terrestrial survey of Shetland. 3.1. Terrestrial habitats. 3.2. Terrestrial vegetation. 3.3. Vegetation map. (CST report no.18).
Banbury: Nature Conservancy Council.

MILNER, C. 1975.

Report to NCC on some aspects of the ecology of Shetland.
III. The terrestrial survey of Shetland. 3.4. The bryophytes of Shetland. 3.5. Saxicolous vegetation. (CST report no.19).
Banbury: Nature Conservancy Council.

MILNER, C. 1975.

Report to NCC on some aspects of the ecology of Shetland.
III. The terrestrial survey of Shetland. 3.6. Cliff and saltmarshes. (CST report no.20).
Banbury: Nature Conservancy Council.

MILNER, C. 1975.

Report to NCC on some aspects of the ecology of Shetland.
IV. The freshwaters of Shetland. 4.1. Physico-chemical description. (CST report no.21).
Banbury: Nature Conservancy Council.

MILNER, C. 1975.

Report to NCC on some aspects of the ecology of Shetland.
IV. The freshwaters of Shetland. 4.2. Freshwater
macrophytes. (CST report no.22).
Banbury: Nature Conservancy Council.

MILNER, C. 1975.

Report to NCC on some aspects of the ecology of Shetland.
IV. The freshwaters of Shetland. 4.3. Freshwater fauna.
(CST report no.23).
Banbury: Nature Conservancy Council.

MILNER, C. 1975.

Report to NCC on some aspects of the ecology of Shetland.
IV. The freshwaters of Shetland. 4.4. Phytoplankton.
(CST report no.24).
Banbury: Nature Conservancy Council.

MILNER, C. 1975.

Report to NCC on some aspects of the ecology of Shetland.
Monitoring. (CST report no.31).
Banbury: Nature Conservancy Council.

MILNER, C. 1975.

Report to NCC on some aspects of the ecology of Shetland.
V. Sites of special scientific interest. 5.1. General
description. (CST report no.25).
Banbury: Nature Conservancy Council.

MILNER, C. 1975.

Report to NCC on some aspects of the ecology of Shetland.
VI. The coast of Shetland. 6.1. Coastal habitats - physical
characteristics. (CST report no.26).
Banbury: Nature Conservancy Council.

MILNER, C. 1975.

Report to NCC on some aspects of the ecology of Shetland.
VI. The coast of Shetland. 6.2. Littoral biota of rocky
shores. Part 1 & part 2. (CST report no.27).
Banbury: Nature Conservancy Council.

MILNER, C. 1975.

Report to NCC on some aspects of the ecology of Shetland.
VI. The coast of Shetland. 6.3. Littoral biota of soft
shores. (CST report no.28).
Banbury: Nature Conservancy Council.

MILNER, C. 1975.

Report to NCC on some aspects of the ecology of Shetland.
VI. The coast of Shetland. 6.4. Sub-littoral biota.
(CST report no.30A).
Banbury: Nature Conservancy Council.

MILNER, C. 1975.

Report to NCC on some aspects of the ecology of Shetland.
VI. The coast of Shetland. 6.5. Seabirds. (CST report no.30B).
Banbury: Nature Conservancy Council.

MILNER, C. 1975.

Report to NCC on some aspects of the ecology of Shetland.
VI. The coast of Shetland. 6.6. Description of development sites. (CST report no.32).
Banbury: Nature Conservancy Council.

MILNER, C. 1975.

Shetland project monitoring report. Part 1. Introduction and general. (CST report no.5).
Banbury: Nature Conservancy Council.

MILNER, C. 1975.

Shetland project monitoring report. Part 2. Seabirds (1) Report and conclusions. (CST report no.8).
Banbury: Nature Conservancy Council.

MILNER, C. 1975.

Shetland project monitoring report. Part 2. Seabirds (2) Tables. (CST report no.6).
Banbury: Nature Conservancy Council.

MILNER, C. 1975.

Shetland project monitoring report. Part 3. Marine environment and biota. (CST report no.7).
Banbury: Nature Conservancy Council.

MILNER, C. 1975.

Shetland project monitoring report. Part 4. Birds. (CST report no.9)
Banbury: Nature Conservancy Council.

MILNER, C. 1975.

Shetland project monitoring report. Part 5. Project plans and networks. (CST report no.10).
Banbury: Nature Conservancy Council.

MILNER, C. 1975.

Shetland summary project plans. (CST report no.16).
Banbury: Nature Conservancy Council.

(MITCHELL, C.P., BRANDON, O.H.), BUNCE, R.G.H., BARR, C.J.,
(TRANter, R.B., DOWNING, P., PEARCE, M.L.) & WHITTAKER, H.A.
1983.

Land availability for production of wood energy in Britain.
In: Energy from biomass, edited by A.Strub, P.Chartier & G.Schleser, 159-163. (2nd E.C.Conference, Berlin, 1982).
London: Applied Science.

(MOORE, D., CASSELTON, L.A., WOOD, D.A.) & FRANKLAND, J.C., eds.
1985.

Developmental biology of higher fungi. (British Mycological Society symposium no.10).
Cambridge: Cambridge University Press.

MOSS, R. & PARKINSON, J.A. 1975.

The digestion of bulbils (*Polygonum viviparum* L.) and berries (*Vaccinium myrtillus* L. and *Empetrum* sp.) by captive ptarmigan (*Lagopus mutus*).
Br. J. Nutr., 33, 197-206.

PARKINSON, J.A. 1974.

The use of atomic absorption spectroscopy in the analysis of ecological materials.

Scan, 4, 17-19.

PARKINSON, J.A. & ALLEN, S.E. 1975.

A wet oxidation procedure suitable for the determination of nitrogen and mineral nutrients in biological material.

Commun. Soil Sci. Pl. Anal., 6, 1-11.

PARKINSON, J.A. & HERRILL, A.D. 1984.

An assessment of variation due to laboratory and field conditions in the measurement of radionuclides.

Nucl. Instrum. Meth. Phys. Res., 223, 538-541.

PEARCE, N.J. & (RICHENS, R.H.) 1977.

Peroxidase isozymes in some elms (*Ulmus* L.) of eastern England.

Watsonia, 11, 382-383.

PELHAM, J., KINNAIRD, J.W., GARDINER, A.S. & LAST, F.T. 1984.

Variation in, and reproductive capacity of, *Betula pendula* and *B. pubescens*.

Proc. R. Soc. Edinb., 85B, 27-41.

(PUCEK, Z.) & LOWE, V.P.W. 1975.

Age criteria in small mammals. In: Small mammals, their productivity and population dynamics, edited by F.B. Golley and others, 55-72.

Cambridge: Cambridge University Press.

QUARMBY, C. 1981.

The fabrication of multichannel tubing and its use in a continuous-flow isoelectric focusing apparatus to give smooth laminar flow.

Electrophoresis, 2, 203-212.

(RAWES, M.) & HEAL, O.W. 1978.

The blanket bog as part of a Pennine moorland. In: Production ecology of British moors and montane grasslands, edited by O.W. Heal and D.F. Perkins, 224-243.

Berlin: Springer.

(RAYNER, A.D.M., WATLING, R.) & FRANKLAND, J.C. 1985.

Resource relations - an overview. In: Developmental biology of higher fungi, edited by D. Moore and others, 1-40.

Cambridge: Cambridge University Press.

(RICHENS, R.H.) & JEFFERS, J.N.R. 1975.

Multivariate analysis of the elms of northern France. 1. Variation within France.

Silvae Genet., 24, 141-150.

(RICHENS, R.H.) & PEARCE, N.J. 1984.

Isoperoxidase variation in *Ulmus* L.

Forestry, 57, 75-84.

(ROSSWALL, T.) & HEAL, O.W. 1975.

The IBP Tundra Biome - an introduction. In: Structure and function of tundra ecosystems, edited by T. Rosswall & O.W. Heal, 7-16.

Stockholm: Swedish Natural Science Research Council.

(ROSSWALL,T.) & HEAL,O.W., eds. 1975.

Structure and function of tundra ecosystems.

Stockholm: Swedish Natural Science Research Council.

ROWLAND,A.P. & (BLAKE,C.C.). 1979.

Practical aspects of an on-line laboratory data system.

J. autom. Chem., 1, 259-267.

ROWLAND,A.P. 1983.

An automated method for the determination of ammonium-N in ecological materials.

Commun. Soil Sci. Pl. Anal., 14, 49-63.

ROWLAND,A.P., GRIMSHAW,H.M. & (RIGABA,O.M.H.). 1984.

Control of soil solution interferences in an automated nitrate method.

Commun. Soil Sci. Pl. Anal., 15, 337-351.

ROWLAND,A.P. & GRIMSHAW,H.M. 1985.

A wet oxidation procedure suitable for total nitrogen and phosphorus in soil.

Commun. Soil. Sci. Pl. Anal., 16, 551-560.

SATCHELL,J.E. 1974.

Introduction: litter interface of animate/inanimate matter.

In: Biology of plant litter decomposition, edited by

C.H.Dickinson & G.J.F.Pugh, vol.1, xiii-xliv.

London: Academic Press.

SATCHELL,J.E. 1975.

Soil biology and the doctoral syndrome. In: Progress in soil zoology, edited by J.Vanek, 603-610.

Prague: Academia.

SATCHELL,J.E. 1976.

The effects of recreation on the ecology of natural landscapes.

Strasbourg: Council of Europe.

SATCHELL,J.E. & (STONE,D.A.). 1977.

Colonisation of pulverised fuel ash sites by earthworms.

Publ. Cent. pirenaico Biol. exp., 9, 59-74.

SATCHELL,J.E. 1977.

Earthworms - the trombones of the grave. In: Soil organisms as components of ecosystems, edited by U.Lohm & T.Persson,

598-603.

Stockholm: Swedish Natural Science Research Council.

SATCHELL,J.E. 1978.

Ecology and environment in the United Arab Emirates.

J. arid Environ., 1, 201-226.

SATCHELL,J.E. 1980.

The earthworm populations of experimental Betula plots on a Calluna podzol.

Pedobiologia, 20, 151-153.

SATCHELL,J.E. 1980.

Earthworm populations of experimental birch plots on a Calluna podzol.

Soil Biol. & Biochem., 12, 311-316.

SATCHELL, J.E. 1980.

Potential of the Silpho Moor experimental birch plots as a habitat for *Lumbricus terrestris*.
Soil Biol. & Biochem., 12, 317-323.

SATCHELL, J.E. 1980.

"r" worms and "K" worms: a basis for classifying lumbricid earthworm strategies. In: Soil biology as related to land use practices, edited by D.L.Dindal, 848-864.
Washington, D.C.: Office of Pesticide and Toxic Substances, Environmental Protection Agency.

SATCHELL, J.E. 1980.

Soil and vegetation changes in experimental birch plots on a *Calluna* podzol.
Soil Biol. & Biochem., 12, 303-310.

SATCHELL, J.E. & MARTIN, K. 1981.

A bibliography of earthworm research.
Grange-over-Sands: Institute of Terrestrial Ecology.

SATCHELL, J.E. 1981.

Earthworm evolution: pangaea to production prototype. In: Proc. Workshop on the Role of Earthworms in the Stabilization of Organic Residues, Kalamazoo, 1980, compiled by Mary Appelhof, vol.1, 3-35.
Kalamazoo: Beach Leaf Press.

SATCHELL, J.E., MOUNTFORD, M.D. & (BROWN, W.M.). 1981.

A land classification of the United Arab Emirates.
J. arid Environ., 4, 275-285.

SATCHELL, J.E. 1981.

Vermicomposta: una tecnologia in fase di sviluppo per la stabilizzazione dei reifuti organici.
Il Lombrico,

SATCHELL, J.E. 1982.

Recreation, ecology, landscape.
Naturopa, no.42, 26-28.

SATCHELL, J.E. 1983.

Earthworm ecology in forest soils. In: Earthworm ecology, from Darwin to vermiculture, edited by J.E.Satchell, 161-170.
London: Chapman and Hall.

SATCHELL, J.E., ed. 1983.

Earthworm ecology, from Darwin to vermiculture.
London: Chapman and Hall.

SATCHELL, J.E. 1983.

Earthworm microbiology. In: Earthworm ecology, from Darwin to vermiculture, edited by J.E.Satchell, 351-364.
London: Chapman and Hall.

SATCHELL, J.E. 1983.

A history of Meathop Woods. Part I - prehistory.
Trans. Cumb. & Westm. antiq. & archaeol. Soc., 83, 25-32.

SATCHELL, J.E. & MARTIN, K. 1984.

A bibliography of earthworm research: supplement.
Grange-over-Sands: Institute of Terrestrial Ecology.

- SATCHELL, J.E. & (DOTTIE, D.J.). 1984.
Factors affecting the longevity of earthworms stored in peat.
J. appl. Ecol., 21, 285-291.
- SATCHELL, J.E. 1984.
Has vermiculture a future? Implications of current trends in advertising. In: International Symposium on Agricultural and Environmental Prospects in Earthworm Farming, Rome, 1983, edited by U. Tomati & A. Grappelli, 15-26.
Rome: Consiglio Nazionale delle Ricerche.
- SATCHELL, J.E. & MARTIN, K. 1984.
Phosphatase activity in earthworm faeces.
Soil Biol. & Biochem., 16, 191-194.
- SATCHELL, J.E., MARTIN, K. & (KRISHNAMOORTHY, R.V.). 1984.
Stimulation of microbial phosphatase production by earthworm activity.
Soil Biol. & Biochem., 16, 195.
- SCOTT, R. & MARRS, R.H. 1984.
Impact of Japanese knotweed and methods of control. In: Weed control and vegetation management in forests and amenity areas, 291-296. (Aspects of applied biology 5).
Wellesbourne: Association of Applied Biologists.
- SHAW, M.W. 1974.
The reproductive characteristics of oak. In: The British oak, edited by M.G. Morris & F.H. Perring, 162-181.
Faringdon: Clasper for the Botanical Society of the British Isles.
- (SOUTHERN, H.N.) & LOWE, V.P.W. 1982.
Predation by tawny owls (*Strix aluco*) on bank voles (*Clethrionomys glareolus*) and woodmice (*Apodemus sylvaticus*).
J. Zool., 198, 83-102.
- (SPRINGETT, J.A.) & LATTEP, P.M. 1977.
Studies on the microfauna of blanket bog with particular reference to Enchytraeidae. I. Field and laboratory tests of micro-organisms as food.
J. Anim. Ecol., 46, 959-974.
- (STANDEN, V.) & LATTEP, P.M. 1977.
Distribution of a population of *Cognettia sphagnetorum* (Enchytraeidae) in relation to microhabitats in a blanket bog.
J. Anim. Ecol., 46, 213-229.
- (SWIFT, M.J., HEALEY, I.N.), HIBBERD, J.K., SYKES, J.M., (BAMPOE, V. & NESBITT, M.E.) 1976.
The decomposition of branch-wood in the canopy and floor of a mixed deciduous woodland.
Oecologia, 26, 139-149.
- (SWIFT, M.J.), HEAL, O.W. & (ANDERSON, J.M.). 1979.
Decomposition in terrestrial ecosystems.
Oxford: Blackwell Scientific.
- SYKES, J.M. & HERRILL, A.D. 1976.
Kirkconnell-Flow National Nature Reserve. Report on a vegetation survey. (CST report no.78).
Banbury: Nature Conservancy Council.

SYKES, J.M. & HORRILL, A.D. 1976.

Monitoring post-fire vegetation at Shieldaig (Coille-Creag-Loch). Interim report. (CST report no.79).
Banbury: Nature Conservancy Council.

SYKES, J.M. & HORRILL, A.D. 1976.

Monitoring Scots pine regeneration in an enclosure at Coille-Coire-Chuilc SSSI, Tyndrum, Perthshire.
(CST report no.76).

Banbury: Nature Conservancy Council.

SYKES, J.M. 1976.

Regeneration of juniper. A summary of data collected at Tynron Juniper Wood NNR 1960-74. (CST report no.128).

Banbury: Nature Conservancy Council.

SYKES, J.M. 1976.

A vegetation survey of Wood of Cree SSSI, Kirkcudbrightshire - a large oakwood in the south of Scotland. (CST report no.75).

Banbury: Nature Conservancy Council.

SYKES, J.M. & HORRILL, A.D. 1977.

1. Post fire vegetation at Shieldaig (Coille-Creag-Loch).

2. Regeneration in an enclosure at Coille-Creag-Loch. Interim reports. (CST report no.95).

Banbury: Nature Conservancy Council.

SYKES, J.M. & HORRILL, A.D. 1977.

Regeneration in a series of enclosures at Black-Wood-of-Rannoch. Interim report of work carried out in 1976.

(CST report no.97).

Banbury: Nature Conservancy Council.

SYKES, J.M. & HORRILL, A.D. 1978.

Monitoring of natural regeneration in pinewoods. A. Shieldaig (Coille Creag Loch); B. Tyndrum (Coille Coire Chuilc);

C. Blackwood of Rannoch. Interim report. (CST report no.144).

Banbury: Nature Conservancy Council.

SYKES, J.M. & HORRILL, A.D. 1978.

Survey methods within woodlands: interim report.

(CST report no.175).

Banbury: Nature Conservancy Council.

SYKES, J.M. & HORRILL, A.D. 1979.

Monitoring of natural regeneration in pinewoods: interim report.

(CST report no.232).

Banbury: Nature Conservancy Council.

SYKES, J.M. & HORRILL, A.D. 1980.

Monitoring tree regeneration in an enclosure at Coille Coire Chuilc SSSI, Tyndrum, Perthshire.

(CST report no.291).

Banbury: Nature Conservancy Council.

SYKES, J.M. & HORRILL, A.D. 1981.

Development of post fire vegetation in the Caledonian pinewood of Coille Creag-Loch, Shieldaig, Wester Ross.

(CST report no.313).

Banbury: Nature Conservancy Council.

SYKES, J.M. 1981.

Monitoring in woodlands. In: Forest and woodland ecology: an account of research being done in ITE, edited by F.T.Last & A.S.Gardiner, 32-40. (ITE symposium no.8).
Cambridge: Institute of Terrestrial Ecology.

SYKES, J.M. & HORRILL, A.D. 1981.

Recovery of vegetation in a Caledonian pinewood after fire.
Trans. bot. Soc. Edinb., 43, 317-325.

SYKES, J.M. & HORRILL, A.D. 1982.

Regeneration in a series of enclosures at Black Wood of Rannoch. Final report. (CST report no.370).
Banbury: Nature Conservancy Council.

SYKES, J.M., HORRILL, A.D. & MOUNTFORD, M.D. 1983.

Use of visual cover assessments as qualitative estimators of some British woodland taxa.
J. Ecol., 71, 437-450.

SYKES, J.M. 1984.

Natural root grafts in some native British tree species.
Arboric. J., 8, 67-72.

SYKES, J.M., LOWE, V.P.W. & BRIGGS, D.R. 1985.

Changes in plants and animals in the first 10 years after upland afforestation.
Annu. Rep. Inst. terr. Ecol. 1984, 16-21.

SYKES, J.M. & HORRILL, A.D. 1985.

Natural regeneration in a Caledonian pinewood: progress after eight years of enclosure at Coille Coire Chuilc, Perthshire.
Arboric. J., 9, 13-24.

(VAN CLEVE, K.) & HARRISON, A.F. 1985.

Bioassay of forest floor phosphorus supply for plant growth.
Can. J. For. Res., 15, 156-162.

(WALTON, D.W.H.), GREENE, D.M. & CALLAGHAN, T.V. 1975.

An assessment of primary production in a sub-antarctic grassland on South Georgia.
Bull. Br. antarct. Surv., no.41/42, 151-160.

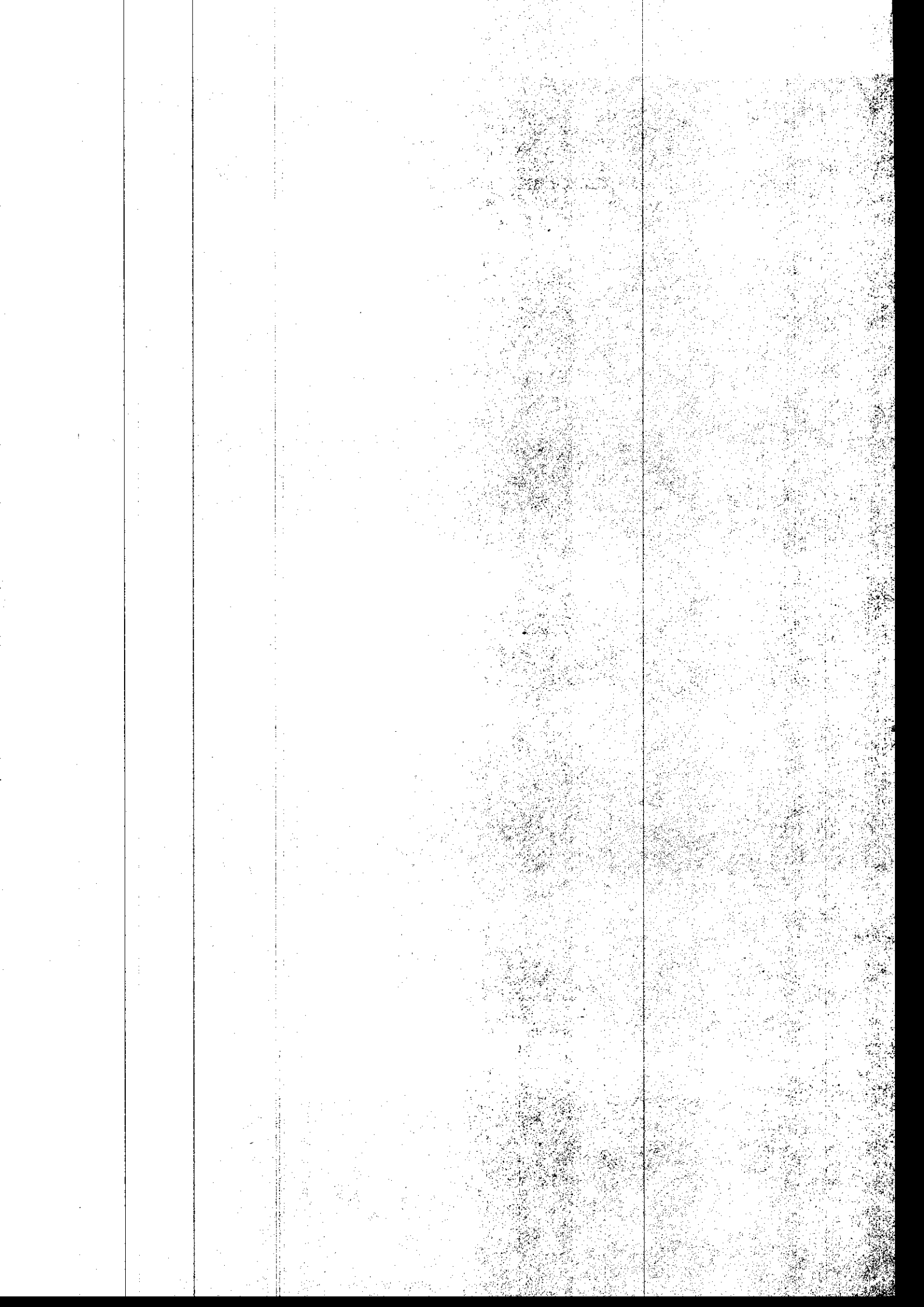
WHITE, E.J. 1974.

Multivariate analysis of tree height increment on meteorological variables near the altitudinal tree limit in northern England.
Int. J. Biomet., 18, 199-210.

WHITE, E.J. & LINDLEY, D.K. 1976.

The reduction of climatological data for ecological purposes: a preliminary analysis.
J. environ. Manage., 4, 161-182.

RESEARCH AND DEVELOPMENT PAPERS



- ALLEN, S.E., SATCHELL, J.E., BROWN, A.H.F. & BUNCE, R.G.H. 1981.
Ecology in the 1980s. I. Report of internal discussions at Merlewood.
Merlewood Res. Dev. Pap., no.82.
- BACON, P.J. & (ARMITAGE, P.) 1979.
The epizootiology of rabies.
Merlewood Res. Dev. Pap., no.76.
- BACON, P.J. & (MACDONALD, D.W.), eds. 1981.
Habitat classification, fox populations and rabies spread.
Merlewood Res. Dev. Pap., no.81.
- BACON, P.J. 1982.
Population dynamics: models based on individual growth, resource allocation and competitive ethology.
Merlewood Res. Dev. Pap., no.88.
- BAILEY, A.D. 1975.
Solar radiation recording at Moor House.
Merlewood Res. Dev. Pap., no.65.
- BALL, D.F., DALE, J., SHEAIL, J., DICKSON, K.E. & WILLIAMS, W.M. 1981.
Ecology of vegetation change in upland landscapes. Part I: General synthesis.
Bangor occas. Pap., no.2.
- (BALL, F.G.) & BACON, P.J. 1984.
Rabies Working Party: workshop meeting to assess the "Ontario" model.
Merlewood Res. Dev. Pap., no.99.
- BECKETT, J., JEFFERS, J.N.R. & (NELSON, A.), comps. 1985.
Mathematical ecology: a bibliography of publications by ITE staff.
Merlewood Res. Dev. Pap., no.104.
- BECKETT, J. & (NELSON, A.), comps. 1985.
Merlewood publications 1974-1984.
Merlewood Res. Dev. Pap., no.93.
- BENEFIELD, C.B. & BUNCE, R.G.H. 1982.
A preliminary visual presentation of land classes in Britain.
Merlewood Res. Dev. Pap., no.91.
- (BISHOP, I.) 1978.
Land use in rural Cumbria - a linear programming model.
Merlewood Res. Dev. Pap., no.75.
- (BITTIG, B.) 1983.
Interactions between ecology and economics.
Merlewood Res. Dev. Pap., no.94.
- BOCOCK, K.L., LINDLEY, D.K., (GILL, C.A.), ADAMSON, J.K. & (WEBSTER, J.A.) 1974.
Harmonic analysis and synthesis: basic principles of the technique and some applications to air and soil.
Merlewood Res. Dev. Pap., no.54.

- BOCOCK, K.L. & ADAMSON, J.K. 1976.
The effects of land-use and management on upland ecosystems with particular reference to soils in the Lake District.
Merlewood Res. Dev. Pap., no.68.
- BOCOCK, K.L., BAILEY, A.D. & ADAMSON, J.K. 1977.
The sucrose inversion method of measuring temperature and its applications.
Merlewood Res. Dev. Pap., no.69.
- BOCOCK, K.L. & ADAMSON, J.K. 1982.
Soil temperature in a deciduous woodland in north-west England.
Merlewood Res. Dev. Pap., no.87.
- BUNCE, R.G.H., BARR, C.J. & WHITTAKER, H.A. 1981.
Land classes in Britain: preliminary descriptions for users of the Merlewood method of land classification.
Merlewood Res. Dev. Pap., no.86.
- (CHEN, L-Z.) & LINDLEY, D.K. 1981.
Primary production, decomposition and nutrient cycling in a bracken grassland ecosystem.
Merlewood Res. Dev. Pap., no.80.
- (CHRISTENSEN, B.T.). 1982.
The effect of afforestation on carbon and nitrogen in the soil at Gisburn: a pilot study.
Merlewood Res. Dev. Pap., no.89.
- (CHRISTENSEN, B.T.). 1982.
The effect of afforestation with Sitka spruce on soil carbon dynamics at Gisburn: a simple model study.
Merlewood Res. Dev. Pap., no.90.
- (CUI, Q.) & LAWSON, G.J. 1982.
Study on models of single populations.
Merlewood Res. Dev. Pap., no.92.
- DIGHTON, J., ed. 1983.
Current mycorrhizal research: abstracts of communications presented at the Mycorrhiza Group Meeting, Lancaster University, March 28-30, 1983.
Merlewood Res. Dev. Pap., no.95.
- (ELENA-ROSSELLO, R.), BUNCE, R.G.H. & BARR, C.J. 1984.
A study of the effects of the changes in data structure on a preliminary land classification of the Iberian peninsula.
Merlewood Res. Dev. Pap., no.98.
- GARDINER, A.S. 1974.
The genetic effects of introductions.
Merlewood Res. Dev. Pap., no.56.
- (GORDON, A.F.) 1975.
Computer model to simulate movement of oil at sea.
Merlewood Res. Dev. Pap., no.62.
- HAMILTON, N. 1981.
A bibliographically-annotated checklist of the birds of Shetland.
Merlewood Res. Dev. Pap., no.84.

HARRISON, A.F. 1974.

Sample preparation and counting of radioisotopes by liquid scintillation counting and their application to soil, soil/plant and plant studies.

Merlewood Res. Dev. Pap., no.60.

HARRISON, A.F., DIGHTON, J. & SMITH, M.R. 1984.

The phosphorus deficiency bioassay: sample and data handling procedures.

Merlewood Res. Dev. Pap., no.103.

HEAL, O.W., ed. 1981.

Ecology in the 1980s. II. Report of a discussion in northern England.

Merlewood Res. Dev. Pap., no.83.

HEAL, O.W. & (WHITBY, M.C.). 1984.

Environmental issues in the 1980s: rural land use.

Merlewood Res. Dev. Pap., no.96.

HELLIWELL, D.R. 1974.

Beckside Farm: a botanical survey and evaluation.

Merlewood Res. Dev. Pap., no.61.

HELLIWELL, D.R. 1974.

An examination of the effects of size and isolation on the wildlife conservation value of wooded sites. II. Plants.

Merlewood Res. Dev. Pap., no.59.

HELLIWELL, D.R. 1974.

The growth of sycamore (*Acer pseudoplatanus* L.) and birch (*Betula verrucosa* Ehrh.) seedlings in 50 different soils.

Merlewood Res. Dev. Pap., no.58.

HOWARD, P.J.A., LINDLEY, D.K. & HORNUNG, M. 1974.

Recording soil profile descriptions for computer retrieval.

Merlewood Res. Dev. Pap., no.55.

HOWARD, P.J.A. & HOWARD, D.M. 1976.

Respiration, litter nutrients, and soil organic matter in grazed and ungrazed upland limestone grassland.

Merlewood Res. Dev. Pap., no.67.

HOWARD, P.J.A. 1977.

Numerical classification and cluster analysis in ecology: a review.

Merlewood Res. Dev. Pap., no.74.

HOWARD, P.J.A. 1977.

The survey and classification of upland areas for land management studies: a review.

Merlewood Res. Dev. Pap., no.72.

HOWARD, P.J.A., HORNUNG, M. & HOWARD, D.M. 1980.

Recording soil profile descriptions for computer retrieval.

Merlewood Res. Dev. Pap., no.78.

HOWARD, P.J.A. 1981.

Statistical considerations in land and habitat classification in the study of rabies spread.

Merlewood Res. Dev. Pap., no.85.

- HOWARD, P.J.A. & HOWARD, D.M. 1984.
Effects of trees on soil properties, a resampling of
J.D.Ovington's *Pinus nigra* var *maritima* plots at Bedgebury,
Abbotswood, and West Tofts.
Merlewood Res. Dev. Pap., no.97.
- HOWARD, P.J.A. & HOWARD, D.M. 1984.
Effects of trees on soil properties, a resampling of
J.D.Ovington's plots at Abbotswood.
Merlewood Res. Dev. Pap., no.101.
- HOWARD, P.J.A. & HOWARD, D.M. 1984.
Effects of trees on soil properties, a resampling of
J.D.Ovington's plots at Bedgebury.
Merlewood Res. Dev. Pap., no.100.
- HOWARD, P.J.A. & HOWARD, D.M. 1984.
Effects of trees on soil properties, a resampling of
J.D.Ovington's plots at West Tofts.
Merlewood Res. Dev. Pap., no.102.
- HOWARD, P.J.A. & HOWARD, D.M. 1985.
Numerical analysis of soil physiological data.
Merlewood Res. Dev. Pap., no.105.
- JEFFERS, J.N.R. 1975.
An application of trend surface analysis to the interpretation
of varietal trials.
Merlewood Res. Dev. Pap., no.63.
- JEFFERS, J.N.R. 1975.
Interactive computers as simple learning machines.
Merlewood Res. Dev. Pap., no.64.
- JEFFERS, J.N.R. & HOLDGATE, M.W. 1976.
Signy Island: a case study of ecological characterisation.
Merlewood Res. Dev. Pap., no.66.
- JEFFERS, J.N.R. 1977.
Simple models of climate in Great Britain.
Merlewood Res. Dev. Pap., no.71.
- JONES, H.E. 1980.
Experimental observations on competition in grasses.
Merlewood Res. Dev. Pap., no.79.
- MILLAR, A. 1980.
Annual rings of birch (*Betula pubescens* ssp *tortuosa* (Ledeb)
(Nyman)), climate and defoliation: an exploratory study.
Merlewood Res. Dev. Pap., no.77.
- (MOLLISON, D.) & BACON, P.J., eds. 1985.
Population dynamics and epidemiology of territorial
animals.
Merlewood Res. Dev. Pap., no.106.
- THOMAS, D.I. 1974.
Resources and energy - a global study of the factors
influencing their acquisition.
Merlewood Res. Dev. Pap., no.57.

THOMAS, D.I. 1977.

The energy outlook.

Merlewood Res. Dev. Pap., no.73.

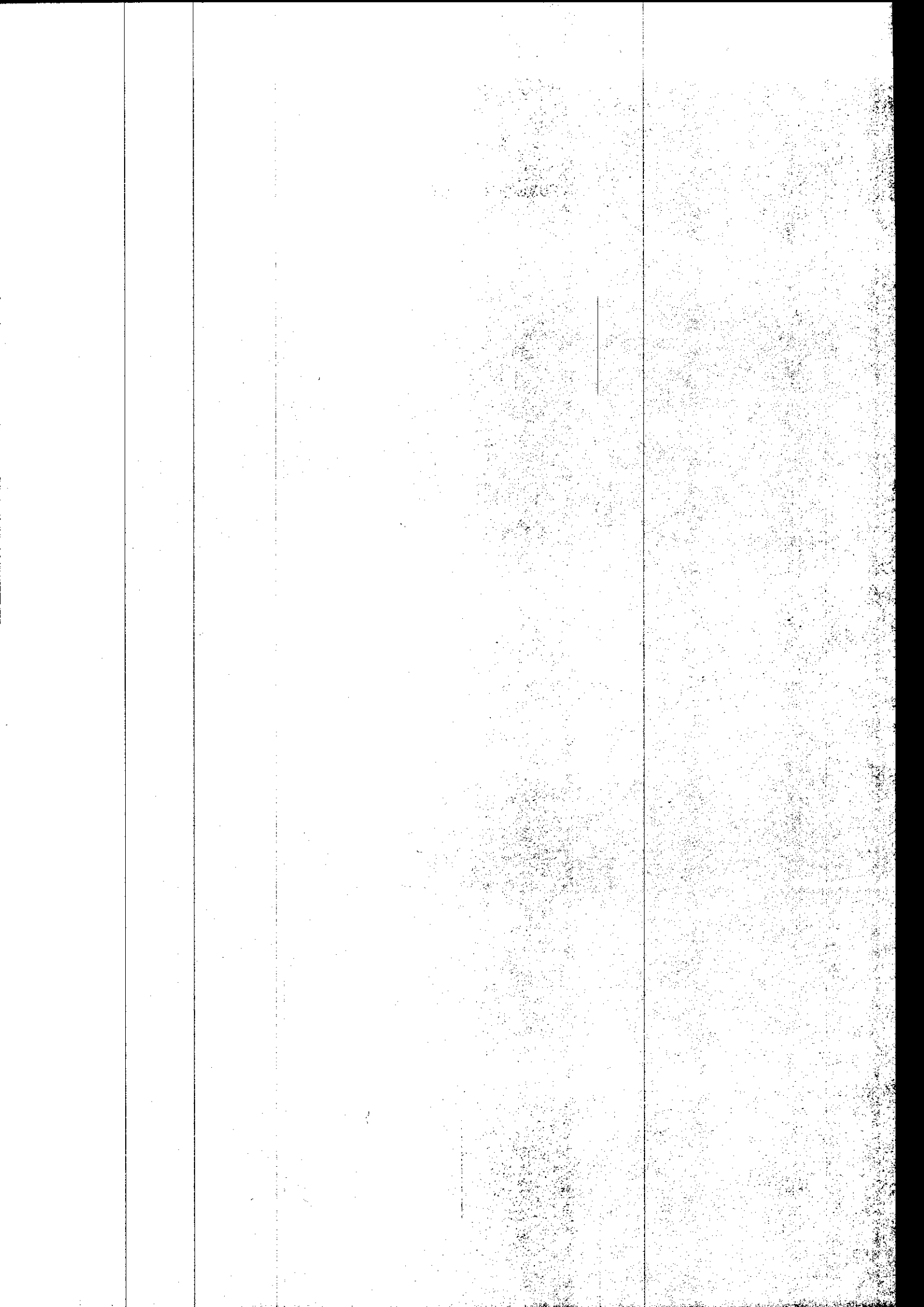
WHITE, E.J. 1977.

Computer programs for the estimation of selected climatic variables and of values of principal components expressing variation in climate for any site in Great Britain.

Merlewood Res. Dev. Pap., no.70.



CONTRACT REPORTS



- ALLEN, S.E. & ROWLAND, A.P. 1980.
Iodine-129 in the terrestrial environment.
National Radiological Protection Board. ITE project 667.
- ALLEN, S.E. & BOCOOCK, K.L. 1980.
Radionuclides in terrestrial ecosystems.
Department of the Environment. ITE project 553.
- ALLEN, S.E. & BOCOOCK, K.L. 1981.
Radionuclides in terrestrial ecosystems.
Department of the Environment. ITE project 553.
- ALLEN, S.E. 1982.
Radionuclide pollutants in natural ecosystems. 3pp.
Commission of European Communities. ITE project 553.
- ALLEN, S.E., HORRILL, A.D., HOWARD, B.J., LOWE, V.P.W. & PARKINSON, J.A. 1983.
Radionuclides in terrestrial ecosystems. Final report. 296pp.
Department of the Environment. ITE project 553.
- BACON, P.J. 1981.
A stochastic matrix model of macrophyte growth and competition on the River Lambourn.
Freshwater Biological Association. ITE project 688.
- BARR, C.J. 1977.
Some ecological characteristics of potential water catchments in north-west England.
Land Use Consultants. ITE project 550.
- BOCOOCK, K.L. 1978.
Radionuclides in terrestrial ecosystems.
Department of the Environment. ITE project 553.
- BOCOOCK, K.L. 1979.
Radionuclides in terrestrial ecosystems - interim report.
Department of the Environment. ITE project 553.
- BROWN, A.H.F. 1976.
Coppice woods and changes in management: some aspects of their ecology - interim review.
Nature Conservancy Council. ITE project 389.
- BROWN, A.H.F. & PEARCE, N.J. 1976.
Ecological effects of management in coppice woodlands.
Nature Conservancy Council. ITE project 389.
- BROWN, A.H.F. & (OOSTERHUIS, L.). 1977.
Management effects in coppice woodlands. The buried seed flora of overgrown coppice woods.
Nature Conservancy Council. ITE project 389.
- BROWN, A.H.F. 1978.
Management effects in lowland coppicewoods.
Nature Conservancy Council. ITE project 389.

BROWN, A.H.F. 1979.

Management effects in lowland coppicewoods. Changes in the vegetation of ancient coppicewoods in East Anglia resulting from altered management.

Nature Conservancy Council. ITE project 389.

BROWN, A.H.F., PEARCE, N.J. & ROBERTSON, S.M.C. 1979.

Management effects in lowland coppicewoods. Vegetation changes resulting from altered management in ancient coppicewoods in the West Midlands.

Nature Conservancy Council. ITE project 389.

BROWN, A.H.F. 1979.

Management effects in lowland coppicewoods. Viable seed content of soils of conifer-planted areas in ancient coppicewoods.

Nature Conservancy Council. ITE project 389.

(BUDD, R.E.), HEAL, O.W., LATTER, P.M. & (RAWES, M.). 1983.

Plenmeller: a preliminary study of vegetation restoration. 27pp.

Countryside Commission. ITE project 834.

BUNCE, R.G.H. 1976.

Range of variation within the pinewoods.

Nature Conservancy Council. ITE project 6.

BUNCE, R.G.H. & PROCTOR, J.E.A. 1977.

Deciduous woodland survey of Scotland - interim report.

Nature Conservancy Council. ITE project 483.

BUNCE, R.G.H., MUNRO, R.C. & PARR, T.W. 1978.

Deciduous woodland survey of Scotland.

Nature Conservancy Council. ITE project 483.

BUNCE, R.G.H., MUNRO, R.C. & PARR, T.W. 1979.

Deciduous woodland survey of Scotland.

Nature Conservancy Council. ITE project 483.

CALLAGHAN, T.V., MILLAR, A., POWELL, D. & LAWSON, G.J. 1978.

Carbon as a renewable energy resource in the U.K. - conceptual approach. 165pp.

Department of Energy. ITE project 552.

CALLAGHAN, T.V., MILLAR, A., POWELL, D. & LAWSON, G.J. 1980.

Carbon as a renewable energy resource in the U.K. - conceptual approach. Management report. 24pp.

Department of Energy. ITE project 552.

CALLAGHAN, T.V., SCOTT, R. & LAWSON, G.J. 1981.

An assessment of native and naturalised species of plants as renewable sources of energy: interim report. 27pp.

Department of Energy. ITE project 674.

CALLAGHAN, T.V., SCOTT, R. & WHITTAKER, H.A. 1981.

The yield, development and chemical composition of some fast-growing indigenous and naturalised British plant species in relation to management as energy crops. 178pp.

Department of Energy. ITE project 640.

CALLAGHAN, T.V., SCOTT, R., LAWSON, G.J. & PROCTOR, A.M. 1984.

An experimental assessment of native and naturalized species of plants as renewable sources of energy in GB. Vol.I. *Pteridium aquilinum* (bracken). 41pp. Department of Energy. ITE project 674.

CALLAGHAN, T.V., SCOTT, R., LAWSON, G.J. & PROCTOR, A.M. 1984.

An experimental assessment of native and naturalized species of plants as renewable sources of energy in GB. Vol.II. *Spartina anglica* (cordgrass). 37pp. Department of Energy. ITE project 674.

CALLAGHAN, T.V., SCOTT, R., LAWSON, G.J. & PROCTOR, A.M. 1984.

An experimental assessment of native and naturalized species of plants as renewable sources of energy in GB. Vol.III. *Reynoutria japonica* (Japanese knotweed). 41pp. Department of Energy. ITE project 674.

CALLAGHAN, T.V., SCOTT, R., LAWSON, G.J. & PROCTOR, A.M. 1984.

An experimental assessment of native and naturalized species of plants as renewable sources of energy in GB. Vol.IV. Energy crop nutrition. 28pp. Department of Energy. ITE project 674.

CALLAGHAN, T.V., SCOTT, R., LAWSON, G.J. & PROCTOR, A.M. 1984.

An experimental assessment of native and naturalized species of plants as renewable sources of energy in GB. Vol.V. Overview. 60pp. Department of Energy. ITE project 674.

DIGHTON, J. 1985.

Effects of acid rain on Scots pine in lysimeters. 34pp. Central Electricity Generating Board. ITE project 893.

GOODIER, R. & BUNCE, R.G.H. 1976.

The native pinewoods of Scotland: the current state of the resource. Nature Conservancy Council. ITE project 6.

HEAL, O.W. 1977.

Upland land use - a desk study. Department of the Environment. ITE project 398.

HEAL, O.W., LATTER, P.M., MILES, J., MILLAR, A. & SMITH, I.R. 1983.

Gruinard Island: assessment of ecological consequences of decontamination. Phase I: Preliminary analysis of the problem. 31pp. Ministry of Defence. ITE project 834.

HORRILL, A.D. & SYKES, J.M. 1975.

Monitoring studies in north-west Scotland: Glen Nant - report on first sample. Nature Conservancy Council. ITE project 12.

HORRILL, A.D. & SYKES, J.M. 1976.

Monitoring studies in north-west Scotland: Glasdrum - report on first sample. Nature Conservancy Council. ITE project 12.

- HORRILL, A.D., THOMSON, A.G. & DALE, J. 1977.
Effects of Asulam on non-target plant species and communities.
Nature Conservancy Council. ITE project 48/171.
- HORRILL, A.D. & SYKES, J.M. 1977.
Monitoring studies in north-west Scotland. Arriundle -
report on first sample.
Nature Conservancy Council. ITE project 454.
- HORRILL, A.D., THOMSON, A.G. & DALE, J. 1978.
Asulam - its effects on selected plants, plant communities
and animals.
Nature Conservancy Council. ITE project 48/171.
- HORRILL, A.D. 1982.
Radionuclides in terrestrial ecosystems. Concentrations and
spatial distribution of radioactivity in saltmarsh. 70pp.
Department of the Environment. ITE project 553.
- HORRILL, A.D. & HOWARD, B.J. 1985.
Radioactive waste management. Progress report. 50pp.
Department of the Environment. ITE project 873.
- HOWARD, B.J. 1985.
Uptake by ewes and lambs of radionuclides from
saltmarsh vegetation harvested from the Esk estuary,
Cumbria. Progress report. 13pp.
Ministry of Agriculture, Fisheries and Food. ITE project 976.
- LAWSON, G.J., CALLAGHAN, T.V. & SCOTT, R. 1980.
Natural vegetation as a renewable energy resource in the UK.
177pp. Department of Energy. ITE project 552.
- LAWSON, G.J., CALLAGHAN, T.V. & SCOTT, R. 1981.
Natural vegetation as a renewable resource in the UK.
Management report. 27pp.
Department of Energy. ITE project 552.
- LAWSON, G.J. 1985.
Cultivating reeds for root zone treatment of sewage. 65pp.
Water Research Centre. ITE project 965.
- LINDLEY, D.K. 1976.
Development of tree enumeration techniques. A data
processing system.
Nature Conservancy Council. ITE project 443.
- LINDLEY, D.K. & MILNER, C. 1981.
Systems analysis and modelling techniques.
United Kingdom Atomic Energy Authority. ITE project 701.
- LINDLEY, D.K. 1984.
Multiple regression models for predicting radionuclides in milk
produced on west Cumbrian farms. 42pp.
Ministry of Agriculture, Fisheries & Food. ITE project 802.
- LOWE, V.P.W. 1977.
Monitoring changes in abundance of the prey of the tiger
in Indian tiger reserves.
International Union for the Conservation of Nature/ World
Wildlife Fund. ITE project 502.

LOWE, V.P.W. 1979.

Wild and feral deer in Great Britain.
Nature Conservancy Council. ITE project 587.

MILLER, G.R., MILES, J. & HEAL, O.W. 1979.

Moorland management study.
Countryside Commission. ITE project 639.

MILNER, C. 1975.

Initial report to Nature Conservancy Council on the
management information system for Shetland (MISS).
Nature Conservancy Council. ITE project 315.

MILNER, C. 1975.

Report to NCC on some aspects of the ecology of Shetland.
Nature Conservancy Council. ITE project 315.

MILNER, C. 1975.

Shetland project monitoring report.
Nature Conservancy Council. ITE project 315.

QUARMBY, C. 1983.

Variability in the distribution of alpha and gamma
emitters in a typical pasture field in the vicinity of
Sellafield Works, West Cumbria. 45pp.
Ministry of Agriculture, Fisheries and Food. ITE project 553.

SCOTT, R., ALLEN, S.E., HERRILL, A.D. & LIVENS, F.R. 1985.

Dounreay EDRP impact study: Dounreay European Demonstration
Fast Reactor Fuel Reprocessing Plant - impact on the
wildlife habitats of the north Caithness coast of
radionuclides from the proposed plant and recommendations
for research. 43pp.
Nature Conservancy Council. ITE project 988.

SYKES, J.M. & HERRILL, A.D. 1976.

Kirkconnell Flow National Nature Reserve - report on
a vegetation survey.
Nature Conservancy Council. ITE project 10.

SYKES, J.M. & HERRILL, A.D. 1976.

Monitoring post-fire vegetation at Shildaig (Coille
Creag-Loch).
Nature Conservancy Council. ITE project 11.

SYKES, J.M. & HERRILL, A.D. 1976.

Monitoring Scots pine regeneration in an enclosure at Coille
Coire Chuilc SSSI, Tyndrum, Perthshire - interim report on
work carried out in 1975.
Nature Conservancy Council. ITE project 379.

SYKES, J.M. 1976.

Regeneration of juniper. A summary of data collected
at Tynron Juniper Wood NNR, 1960-1974.
Nature Conservancy Council. ITE project 387.

SYKES, J.M. 1976.

Report on vegetation survey of Wood of Cree SSSI,
Kirkcudbrightshire - a large oakwood south of Scotland.
Nature Conservancy Council. ITE project 373.

SYKES, J.M. & HORRILL, A.D. 1977.

Monitoring of changes in woodlands. 1 - Post-fire vegetation at Shieldaig (Coille Creag Loch). 2 - Regeneration in an enclosure at Coille Coire Chuilc.
Nature Conservancy Council. ITE project 454.

SYKES, J.M. & HORRILL, A.D. 1977.

Regeneration in a series of enclosures at the Black Wood of Rannoch - interim report.
Nature Conservancy Council. ITE project 454.

SYKES, J.M. & HORRILL, A.D. 1977.

Vegetation monitoring in Indian tiger reserves.
International Union for the Conservation of Nature/World Wildlife Fund. ITE project 502.

SYKES, J.M. & HORRILL, A.D. 1978.

Monitoring of natural regeneration in pinewoods - interim report. A: Shieldaig, B: Tyndrum, C: Blackwood of Rannoch.
Nature Conservancy Council. ITE project 549.

SYKES, J.M. & HORRILL, A.D. 1978.

Survey methods within woodlands - interim report.
Nature Conservancy Council. ITE project 454.

SYKES, J.M. & HORRILL, A.D. 1979.

Monitoring of natural regeneration in pinewoods - interim report. A: Shieldaig, B: Tyndrum, C: Blackwood of Rannoch.
Nature Conservancy Council. ITE project 549.

SYKES, J.M. & HORRILL, A.D. 1979.

Survey methods within woodlands - interim report.
Nature Conservancy Council. ITE project 454.

SYKES, J.M. & HORRILL, A.D. 1980.

Monitoring tree regeneration in an enclosure at Coille Coire Chuilc SSSI Tyndrum, Perthshire - interim report.
Nature Conservancy Council. ITE project 549.

SYKES, J.M. & HORRILL, A.D. 1982.

Regeneration in a series of enclosures at Black Wood of Rannoch. 47pp.
Nature Conservancy Council. ITE project 549.

SYKES, J.M., MARRS, R.H. & MITCHELL, B. 1985.

The impact of red deer (*Cervus elaphus* L.) on the vegetation of native Scottish pinewoods: selection of sites for further studies using the faecal accumulation method, and recommendations for sampling vegetation. 60pp.
Nature Conservancy Council. ITE project 852.