

Article

Evaluation of the ECOSSE Model for Estimating Soil Respiration from Eight European Permanent Grassland Sites

Mohamed Abdalla ^{1,*}, Iris Feigenwinter ², Mark Richards ¹, Sylvia Helga Vetter ¹, Georg Wohlfahrt ³, Ute Skiba ⁴, Krisztina Pintér ⁵, Zoltán Nagy ⁵, Stanislav Hejduk ⁶, Nina Buchmann ², Paul Newell-Price ⁷ and Pete Smith ¹

- ¹ Institute of Biological and Environmental Sciences, School of Biological Sciences, University of Aberdeen, 23 St. Machar Drive, Aberdeen AB24 3UU, UK
- ² Department of Environmental Systems Science, Institute of Agricultural Sciences, ETH Zürich, 8092 Zurich, Switzerland
- ³ Department of Ecology, University of Innsbruck, Sternwartestrasse 15, 6020 Innsbruck, Austria
- ⁴ UK Centre for Ecology & Hydrology, Penicuik EH26 0QB, UK
- ⁵ MTA-MATE Agroecology Research Group, Department of Plant Physiology and Plant Ecology, Institute of Agronomy, Hungarian University for Agricultural and Life Sciences, Pater 1, 2100 Godollo, Hungary
- ⁶ Department of Animal Nutrition and Forage Production, Mendel University in Brno, 61300 Brno, Czech Republic
- ⁷ ADAS, Mansfield NG20 9PD, UK
- * Correspondence: mabdalla@abdn.ac.uk; Tel.: +44-7468316456

Abstract: This study used the ECOSSE model (v. 5.0.1) to simulate soil respiration (R_s) fluxes estimated from ecosystem respiration (R_{eco}) for eight European permanent grassland (PG) sites with varying grass species, soils, and management. The main aim was to evaluate the strengths and weaknesses of the model in estimating R_s from grasslands, and to gain a better understanding of the terrestrial carbon cycle and how R_s is affected by natural and anthropogenic drivers. Results revealed that the current version of the ECOSSE model might not be reliable for estimating daily R_s fluxes, particularly in dry sites. The daily estimated and simulated R_s ranged from 0.95 to 3.1 g CO₂-C m⁻², and from 0.72 to 1.58 g CO₂-C m⁻², respectively. However, ECOSSE could still be a valuable tool for predicting cumulative R_s from PG. The overall annual relative deviation (RD) value between the cumulative estimated and simulated annual R_s was 11.9%. Additionally, the model demonstrated accurate simulation of R_s in response to grass cutting and slurry application practices. The sensitivity analyses and attribution tests revealed that increased soil organic carbon (SOC), soil pH, temperature, reduced precipitation, and lower water table (WT) depth could lead to increased R_s from soils. The variability of R_s fluxes across sites and years was attributed to climate, weather, soil properties, and management practices. The study suggests the need for additional development and application of the ECOSSE model, specifically in dry and low input sites, to evaluate the impacts of various land management interventions on carbon sequestration and emissions in PG.



Citation: Abdalla, M.; Feigenwinter, I.; Richards, M.; Vetter, S.H.; Wohlfahrt, G.; Skiba, U.; Pintér, K.; Nagy, Z.; Hejduk, S.; Buchmann, N.; et al. Evaluation of the ECOSSE Model for Estimating Soil Respiration from Eight European Permanent Grassland Sites. *Agronomy* **2023**, *13*, 1734. <https://doi.org/10.3390/agronomy13071734>

Academic Editor: Gianni Bellocchi

Received: 28 April 2023

Revised: 19 June 2023

Accepted: 24 June 2023

Published: 28 June 2023



Copyright: © 2023 by the authors. Licensee MDPI, Basel, Switzerland. This article is an open access article distributed under the terms and conditions of the Creative Commons Attribution (CC BY) license (<https://creativecommons.org/licenses/by/4.0/>).

Keywords: ECOSSE model; permanent grasslands; soil respiration; European grasslands

1. Introduction

Atmospheric carbon dioxide (CO₂) concentration has been increasing since the beginning of industrialisation [1]. In 2021, the concentration of CO₂ in the atmosphere set a record of about 415 ppm, and it is anticipated that it could potentially reach around 800 ppm by the end of this century [2]. Beside respiration and fires, which are significantly increasing atmospheric CO₂ emissions, human activities, including agricultural production, are not only increasing CO₂, but also the concentration of other greenhouse gases (GHGs), such as methane (CH₄) and nitrous oxide (N₂O) [1]. Moreover, Caldeira and Wickett [3] reported that man-made CO₂ emissions are contributing to acidification of open oceans; however, direct pH measurements and experience in this area are still limited [4,5]. Interaction between management practices, climate, and soil properties influence soil carbon

stocks. For example, intensive management of permanent grasslands (PG) to support ruminant livestock production alters GHG emissions from EU grasslands and can reduce their ability to act as C sinks [6]. Further, in 2017, the livestock sector was responsible for 81–86% of the total agriculture GHG emissions in the EU-28 [7].

In Europe (EU-27 plus the UK and Switzerland), PG cover approximately 34% of the agricultural area and represent a source for many ecosystem services, for example climate regulation and carbon sequestration, cultural values, and high-quality animal feed [6,8–11]. In terms of total area, the countries with the largest grassland area found are the United Kingdom (11 million ha), France (7.6 million ha), Germany (4.8 million ha), and Italy (4.5 million ha) [12]. PG potentially contribute to mitigation of climate change by assimilating atmospheric CO₂ and sequestering it in the soil, depending on climate, soil, and management [13]. Improving grassland management by improving grass and herb species, irrigation, liming, and fertilisation can increase the annual soil organic carbon (SOC) stocks by 10% [14,15].

Soils are the largest C pool in terrestrial ecosystems, containing more than two thirds of the total C. However, soil respiration (i.e., total CO₂ effluxes from the soil surface, which consists of autotrophic root and heterotrophic respiration from decomposition of litter roots and soil organic matter (SOM)) is a critical component of the global carbon cycle and greatly contributes to the atmospheric CO₂ concentration [16]. The decomposition of litter, roots, and SOM results in Rs fluxes [17]. In a global meta-analysis, Wang and Fang [18] quantified annual soil CO₂ efflux from temperate and tropical natural grasslands as 389.8 ± 45.5 and 601.3 ± 45.6 g C m⁻², respectively. Previous studies have found that increases in Rs are due to increasing soil temperature [19–21]. Higher temperatures also increase the long-term soil C decomposition and impact CO₂ emissions from the soil to the atmosphere [22,23]. Further, elevated CO₂ concentrations in the atmosphere, due to anthropogenic emissions and the positive feedback loops resulting from global warming, increase both the below- and above-ground biomass production and, thereby, although uncertain due to high photosynthesis, can increase CO₂ fluxes from soils [18,24].

The model to Estimate Carbon in Organic Soils—Sequestration and Emissions (ECOSSE) was created to simulate C and nitrogen (N) cycling and GHG fluxes from soils. The principles of two mother models, RothC [25–27] and SUNDIAL [28,29], were used for this purpose. The ECOSSE uses a pool-type approach of humus (HUM), inert organic matter (IOM), biomass (BIO), resistant plant material (RPM), and decomposable plant material (DPM) [30]. Material moves between these pools during the decomposition process according to first-order rate equations, characterised by a decay rate constant for each pool. The exchange between pools is controlled by temperature, moisture, crop cover, and soil pH. The soil pH affects aerobic SOC decomposition, according to Equation (1) [31]:

$$m_{pH} = m_{pH,\min} + (1 - m_{pH,\min}) \left(\frac{pH - pH_{\min}}{pH_{\max} - pH_{\min}} \right) \quad (1)$$

The values of $m_{pH,\min}$, pH_{\min} , and pH_{\max} can be set for each site, but by default are set at $m_{pH,\min} = 0.2$, $pH_{\min} = 1$, and $pH_{\max} = 4.5$.

The work by Jenkinson [25] on the impact of plant cover on the decomposition of 14C-labelled ryegrass is relevant to the modelling of soil organic matter (SOM) decomposition in ECOSSE. In ECOSSE, the rate of SOM decomposition is slowed using a crop cover rate modifier (m_c) of 0.6 if plants are actively growing, and 1 if the soil is bare. The active SOC pools implicitly encompass different qualities of SOC (e.g., lignin quantity, etc.) through their different intrinsic decomposition rates and stable C:N ratios, with N being either mineralised or immobilised to maintain that ratio. Variation in the quality of plant inputs to the soil is expressed through land-use types having different DPM:RPM ratios, e.g., grassland has a DPM:RPM ratio of 1.44, whereas forestry has a DPM:RPM ratio of 0.25 to account for its more recalcitrant plant material. In addition, the plant inputs from other land-use types have different C:N ratios [27]. Clay content of the soil impacts aerobic decomposition by altering the partitioning between CO₂ evolved and BIO+HUM

formed during decomposition [25,28]. Clay content is used to determine the efficiency of decomposition (E) under non-N-limiting conditions. The objectives of this research were to [1] evaluate the ECOSSE model to understand its strengths and weakness for estimating R_s from eight European permanent grasslands with their respective climate, grass type, and management, and [2] to obtain a better understanding of the terrestrial C cycle and attribution of R_s to variability in natural and anthropogenic (climate and management) drivers in the European PG ecosystem.

2. Materials and Methods

2.1. The Study Sites

In this study, R_s fluxes from eight European permanent grassland sites were investigated (Figure 1). The sites cover seven countries and have different soils, climatic conditions, and management. Average annual temperatures and precipitation ranged from 4 to 10.2 °C and from 622 to 1365 mm, respectively. Site information with geographic coordinates, climatic conditions, grassland type, and management are given in Table 1. The soil types at the sites varied from sandy loam to clay soils. Initial SOC contents were either measured or estimated using soil % C, bulk density, and sampling depth at the site. Details of soil properties, water table depth, and SOC can be found in Table 2. Soil pH was measured using a pH probe or meter in deionised water. The pH probe, specifically designed for soil pH measurements, was inserted into the soil sample, and the pH meter provided a digital readout of the pH value. Deionized water was used as the solvent for the measurement to minimise interference from other ions or substances in the soil.

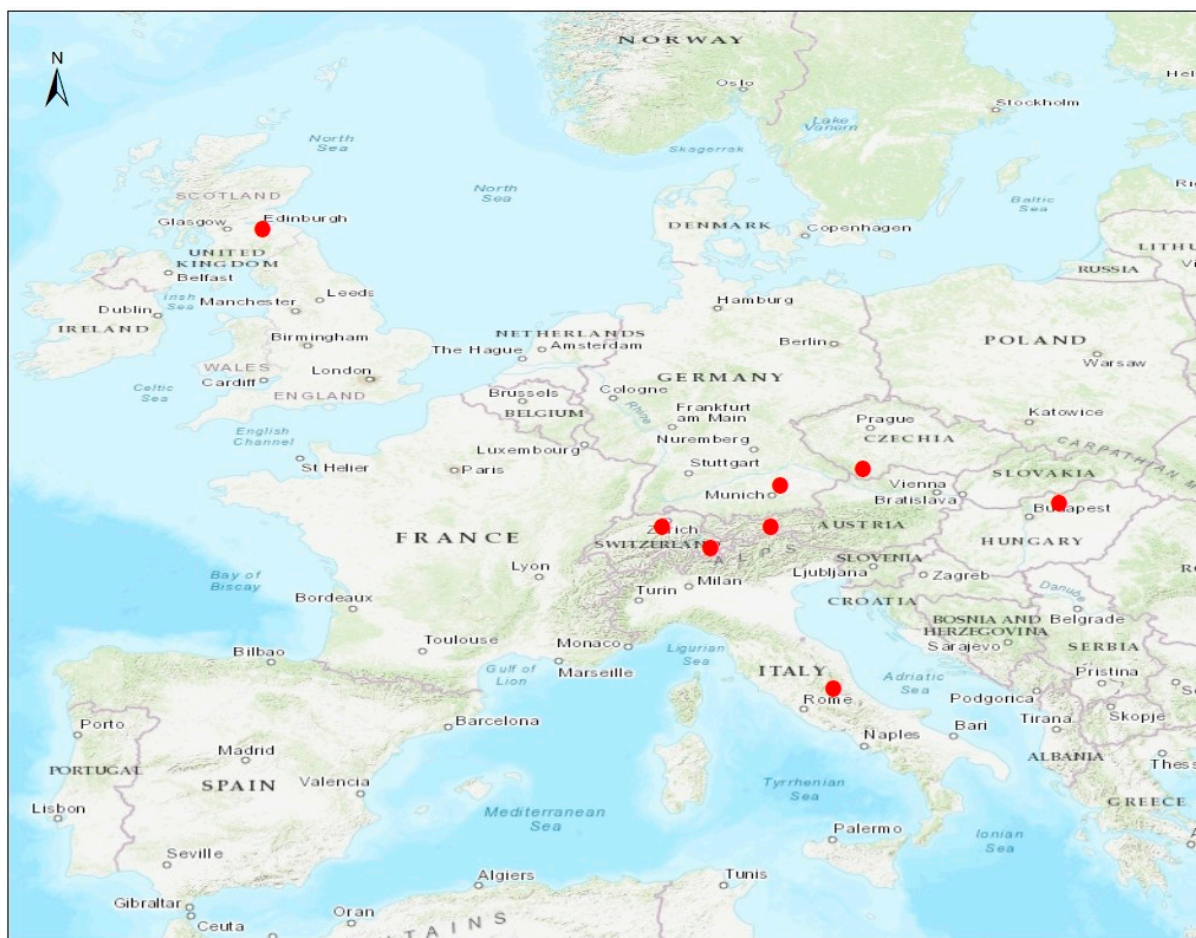


Figure 1. Locations of the investigated sites (●).

Table 1. Site characteristics and data acquisition. MAT is mean annual air temperature; and MAP is mean annual precipitation.

Site/Location *	Coordinates	MAT (°C)	MAP (mm)	Type of Grassland	Site Management	Soil Type	Investigated Years
Easter Bush/UK	55°52' N, 03°02' W	9.0	947	Lolium perenne/clover	Fertilised, grazed, cut	Sandy clay loam	2002–2010
Alp Weissenstein/CH	46°34' N, 09°47' E	4.0	918	Mixed grasslands	Extensively grazed	Sandy loam	2016–2018
Neustift/AT	47°12' N, 11°32' E	6.5	852	Mixed grasslands	Grazed, cut, manure	Sandy loam	2002–2012
Chamau/CH	47°12' N, 08°24' E	9.1	1151	Ryegrass/clover	Cut, grazed, fertilised	Sandy loam to silty loam	2005–2018
Matra/HU	47°52' N, 19°56' E	10.2	622	Mixed grasslands	Cut	Clay soil	2007–2008
Grünschaige/DE	48°23' N, 11°50' E	9.0	775	Ryegrass/clover	Grazed, manure	Silt loam	2002–2012
Borova/CZ	48°52' N, 14°13' E	7.0	650	Ryegrass/clover	Extensively grazed, fertilised	Sandy loam	2002–2004
Amperlo/IT	41°90' N, 13°22' E	10.0	1365	Mixed grasslands	Grazed	Clay soil	2002–2008

* UK = United Kingdom; CH = Switzerland; AT = Austria; HU = Hungary; DE = Germany; CZ = Czech Republic; and IT = Italy.

Table 2. Soil property at 0–50 cm for the ECOSSE model input data.

Site/Location	Bulk Density (g cm ⁻³)	Soil pH	Clay (%)	Water Table Depth (cm)	Measured/Estimated SOC * (t ha ⁻¹)
Easter Bush/UK	1.3	5.1	23	85	120
Alp Weissenstein/CH	1.1	6.4	20	125	32.5
Neustift/AT	0.7	5.5	5.5	125	43.9
Chamau/CH	1.1	5.0	20	125	36.7
Matra/HU	1.3	5.4	35	400	19.5
Grünschaige/DE	1.1	6.4	26	125	31.3
Borova/CZ	1.1	7.8	6.0	25	27.9
Amperlo/IT	1.1	6.6	56	125	54.2

* SOC = soil organic carbon.

2.2. CO₂ Flux Measurements

Measurements of the net ecosystem exchange (NEE) at each site were made by eddy covariance (EC) using either open- or closed-path infrared gas analysers [32,33]. Then, the ecosystem respiration (R_{eco}) of CO₂ fluxes was calculated from the NEE data and made available by the Super-G, GHG-Europe and Carbo-Europe projects, and the Flux-net website. Full descriptions of the sites, EC data corrections, quality control, footprint, gap filling procedures, and calculations of R_{eco} can be found in the literature: Easter Bush in Jones et al. [34], Alp Weissenstein in Hiller et al. [35], Neustift in Wohlfahrt et al. [36], Chamau in Fuchs et al. [37], Matra in Pinter et al. [38], Grünschaige in Hirl et al. [39], Borova in Cuhel et al. [40], and Amperlo in Balzarolo et al. [41]. Meteorological data (average daily air temperature and precipitation) over the period 2002 to 2018 were collected from the investigated sites to be used as inputs to the model. Measurement durations differed among sites and ranged from 3 to 11 years. To estimate R_s from R_{eco} , the approach (Equation (2)) of Hardie et al. [42] and Abdalla et al. [19] was applied. To the best of our knowledge, this is the only available method, at the time of this study, to estimate R_s from the R_{eco} .

$$R_s = R_s \text{ (from surface soils)} + R_s \text{ (below water table soils)} = 46\text{--}59\% \text{ of } R_{eco} \quad (2)$$

where R_s is suggested to be 46% of R_{eco} during the summer (June–August), 59% during the winter (December–February), and mean value (52.5% of R_{eco}) during the rest of the year (March–May and September–November). More details about the estimation can be found in Hardie et al. [42] and Abdalla et al. [19].

2.3. The ECOSSE Model

The ECOSSE model (v. 5.0.1) was applied to simulate R_s from grassland soils at all sites. Then, the outputs of the model were compared with the estimated R_s values. ECOSSE is a process-based model that uses a pool-type approach, and all major processes of C and N turnover in the soil are included and described using simple equations driven by readily available input parameters. The model can be applied for all types of soils and ecosystems on site, national, or global scales. To run the model, data of climate, soil characteristics, vegetation biomass inputs, and management practices of each site are required (Tables 1 and 2). ECOSSE uses the water module of the SUNDIAL model [43], where water moves through the soil pores by ‘piston flow’. The 5 cm layer soil profiles in ECOSSE gradually fill with water until saturation, and then water either drains to the layer below or evaporates from the topmost layer. The model estimates the addition or loss of C and N using their amounts in the above- and below-ground biomass. The model can also estimate the amount of organic matter (OM) input from the vegetation biomass if information on grass is not provided. The total SOC estimated by a steady-state (10,000 year) run using default biomass inputs is compared with the total observed SOC, and a revised estimate is made of the OM inputs so that the simulated steady-state SOC matches the observed values. Plant material is divided into resistant and decomposable material based on a ratio of 1.44 (as used in the RothC model) for DPM:RPM. Daily potential evapotranspiration was calculated using the Thornthwaite equation [44]. More details about the ECOSSE approach can be found in [31].

2.4. Model Sensitivity and Attribution

To investigate the impacts of anthropogenic management and natural drivers on R_s , sensitivity and attribution tests were carried out for each site. Here, only one input parameter was altered at a time, whilst all others were kept constant [19,45]. Simulations were run to assess the impacts on R_s by changes in climate variables: mean temperature (increasing/decreasing the daily mean temperature by 3 °C, from here onward named as Temp+3 and Temp−3) and precipitation (altering the daily precipitation by +30 and −30%, named as Rain+30% and Rain−30%). Simulations were also run to assess how R_s was affected by changes in soil physical properties, i.e., SOC, pH, and water table (WT; i.e., WT depth). SOC (named as SOC+30% and SOC−30%) and pH (named as pH+30% and pH−30%) were altered by +30 and −30%, whilst WT was lowered by 30 cm (named as WT+30).

2.5. ECOSSE Evaluation

Multi-criteria evaluations of the ECOSSE model were applied to identify how well it predicted the estimated R_s . Comparisons of simulated R_s with estimated R_s were undertaken for each site separately. Analysis was carried out to detect the coincidence and association between simulated and estimated values, following the methods described in [45,46]. Model accuracy and performance were evaluated by calculating the relative deviation (RD; Equation (3)) between annual simulated R_s and annual estimated R_s , the coefficient of determination (R^2) to measure the closeness between daily simulated and estimated R_s values, the root mean square error (RMSE; Equation (4)) to measure total error, and the index of agreement (d ; Equation (5)) to measure the ratio of the mean square error and the potential error. The index of agreement value of 1 indicates a perfect match, and 0 indicates no agreement at all. Annual cumulative R_s for model outputs were calculated as the sum of simulated daily fluxes [47].

$$RD = (M_i - S_i) / M_i \quad (3)$$

$$\text{RMSE} = \sqrt{[\sum(\text{Si} - \text{Mi})^2/n]} \quad (4)$$

$$d = 1 - \sum (\text{Si} - \text{Mi})^2 / \sum [(\text{Si} - \bar{X}) + \text{Mi} - \bar{X}]^2 \quad (5)$$

where Mi is the Rs value estimated from R_{eco} and Si is the Rs value simulated by the ECOSSE model. N is the number of investigated days and \bar{X} is the mean of estimated Rs values.

3. Results and Discussion

3.1. Field Estimated Soil Respiration (Rs) from R_{eco}

In this study, average annual estimated Rs flux values from the investigated sites ranged from 350 to 1120 g C m^{-2} , which fall within the annual range of 58 to 1988 g C m^{-2} measured by Bahn et al. [48] from 20 EU grassland sites. Additionally, in a global meta-analysis, Wang and Fang [18] quantified the annual Rs flux from natural grasslands in temperate and tropical regions. Their results showed that the annual Rs was $389.8 \pm 45.5 \text{ g C m}^{-2}$ for temperate natural grasslands and $601.3 \pm 45.6 \text{ g C m}^{-2}$ for tropical natural grasslands. However, to ensure unbiased comparison among the results of various studies, it is vital to maintain consistent soil depth in future studies through the implementation of soil stratification analysis. The long-term MAT and MAP values and soil properties were varied among the investigated sites (Tables 1 and 2). Variabilities were also clear in the average daily temperature and precipitation values at the sites, as shown in Figure S1. In Europe, climate variability, especially in the summer, is expected to increase with more frequent heat waves and droughts [49]. The estimated daily and annual Rs flux values were also substantially variable, among sites and between years at the same site (Figure 2 and Table 3). These variabilities in Rs can be attributed to several factors. The spatial heterogeneity [50] in soil characteristics and microclimate conditions, and variations in grass type and species composition between sites can have impacts on the amount of carbon inputs through photosynthesis. Temporal dynamics in temperature, precipitation, and seasonal changes can directly impact metabolic activity of soil organisms involved in Rs . Other factors, such as natural variability in microbial activity [51], root respiration, and soil moisture fluctuations, can also play a role in these variabilities.

Table 3. Statistical analysis of soil respiration (Rs) estimated from ecosystem respiration (R_{eco}) and ECOSSE-simulated Rs fluxes from the eight grasslands investigated sites.

Site/Location	Years of Measurements	Cumulative Annual Estimated Rs (g C m^{-2})	Cumulative Annual Simulated Rs (g C m^{-2})	Mean Daily Estimated Rs (g C m^{-2})	Mean Daily Simulated Rs (g C m^{-2})	RD* (%)	RMSE [▲] ($\text{g C m}^{-2} \text{ d}^{-1}$)	d	R ² -Range [¶]
Easter Bush/UK	9	770	490	2.11	1.35	−36	1.56	0.86	0.15–0.63
Alp Weissenstein/CH	3	460	260	1.25	0.72	−42	0.91	0.87	0.43–0.62
Neustift/AT	11	1120	490	3.07	1.34	−56	2.51	0.28	0.20–0.53
Chamau/CH	14	810	430	2.92	1.55	−47	3.30	0.55	0.21–0.53
Matra/HU	2	350	530	0.95	1.45	51	1.28	0.67	0.01–0.29
Grünschwaige/DE	11	530	550	1.60	1.58	4	1.28	0.54	0.10–0.53
Borova/CZ	3	483	394	1.32	1.08	−18	1.05	0.87	0.0–0.25 [▼]
Amperlo/IT	7	450	560	1.55	1.95	24	1.35	0.55	0.14–0.44

* RD is relative deviation between cumulative annual estimated Rs from R_{eco} and cumulative annual simulated Rs ; [▲] RMSE is root mean square error; d is index of agreement between ECOSSE-simulated Rs and estimated Rs from R_{eco} ; [¶] R² is the coefficient of determination; and R² range is the minimum and maximum R² values for the investigated years at each site. [▼] Few data were available in the first year.

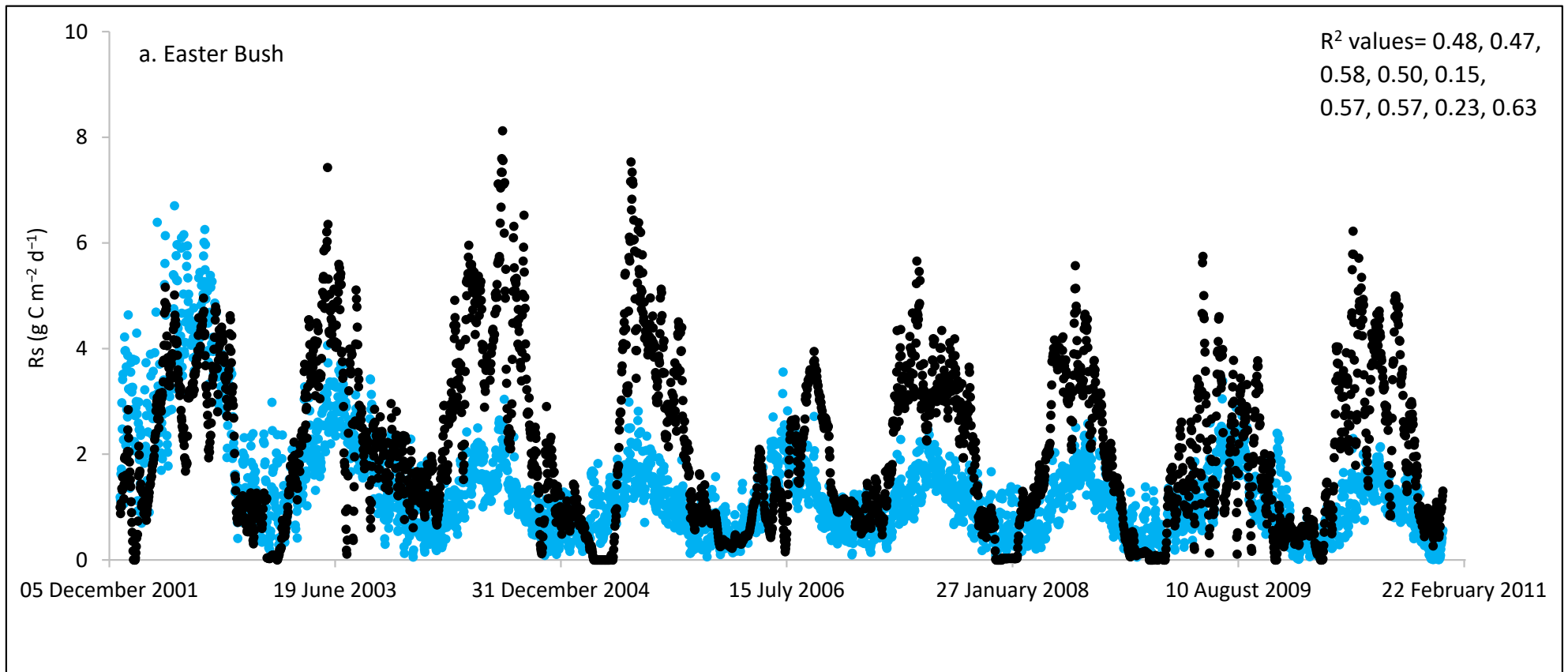


Figure 2. Cont.

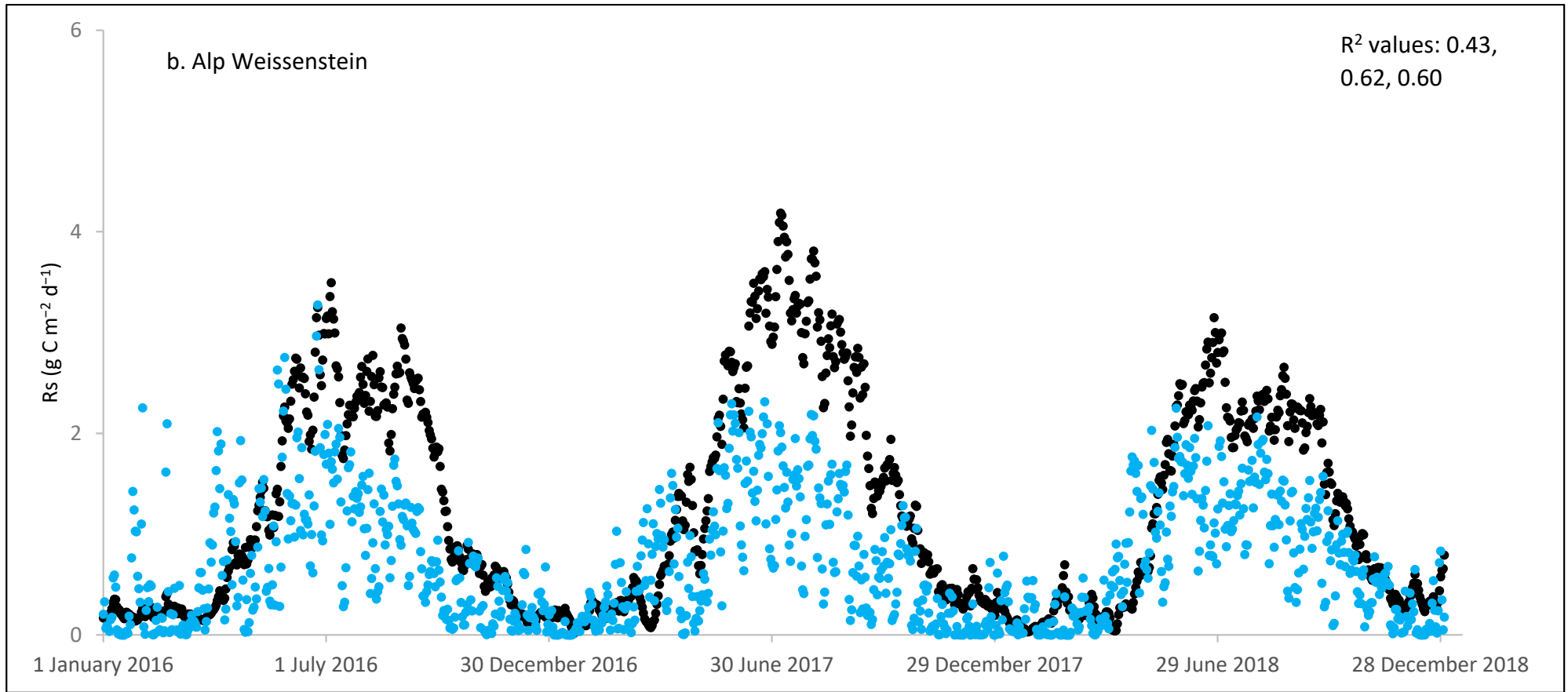


Figure 2. Cont.

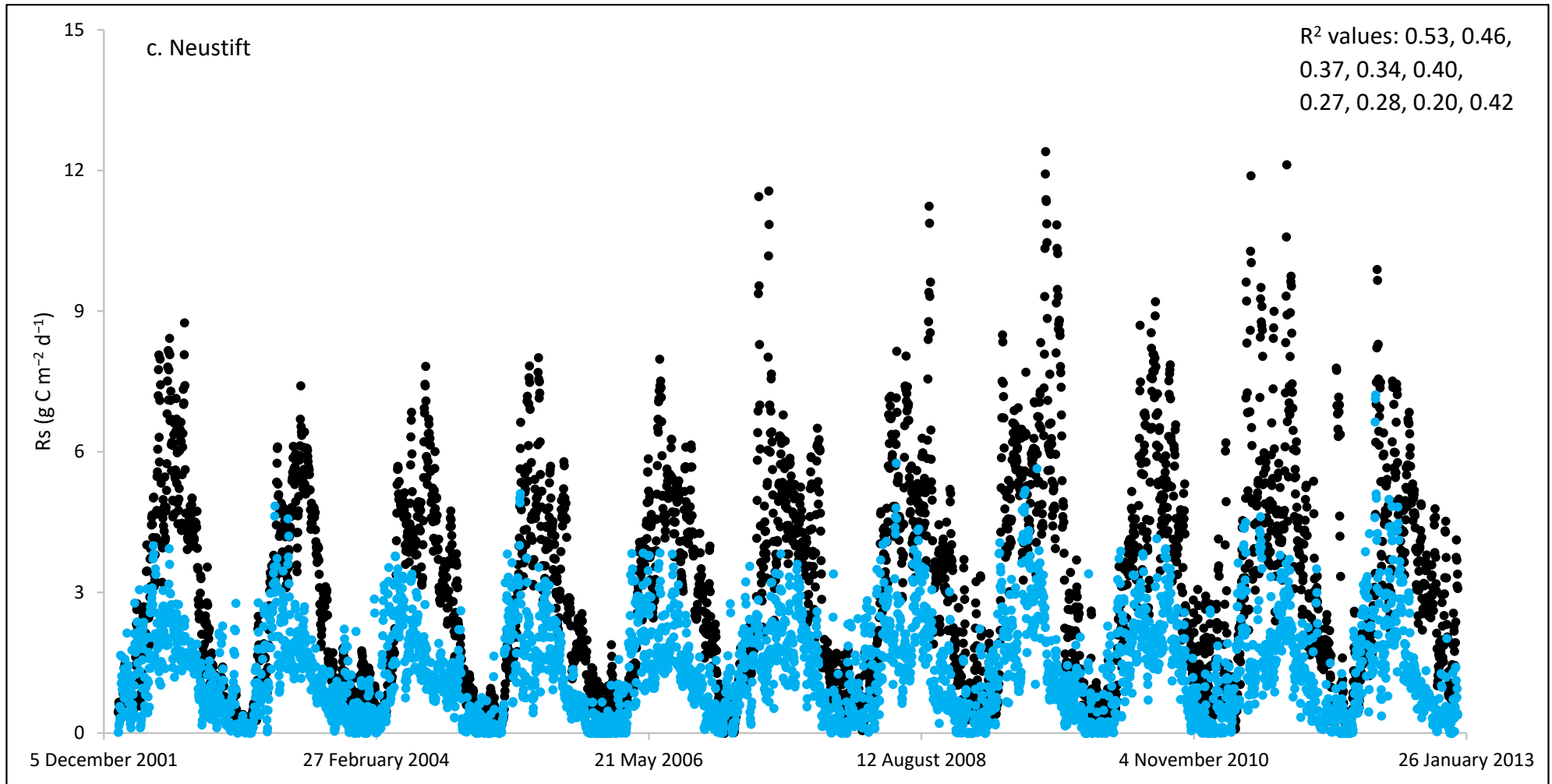


Figure 2. Cont.

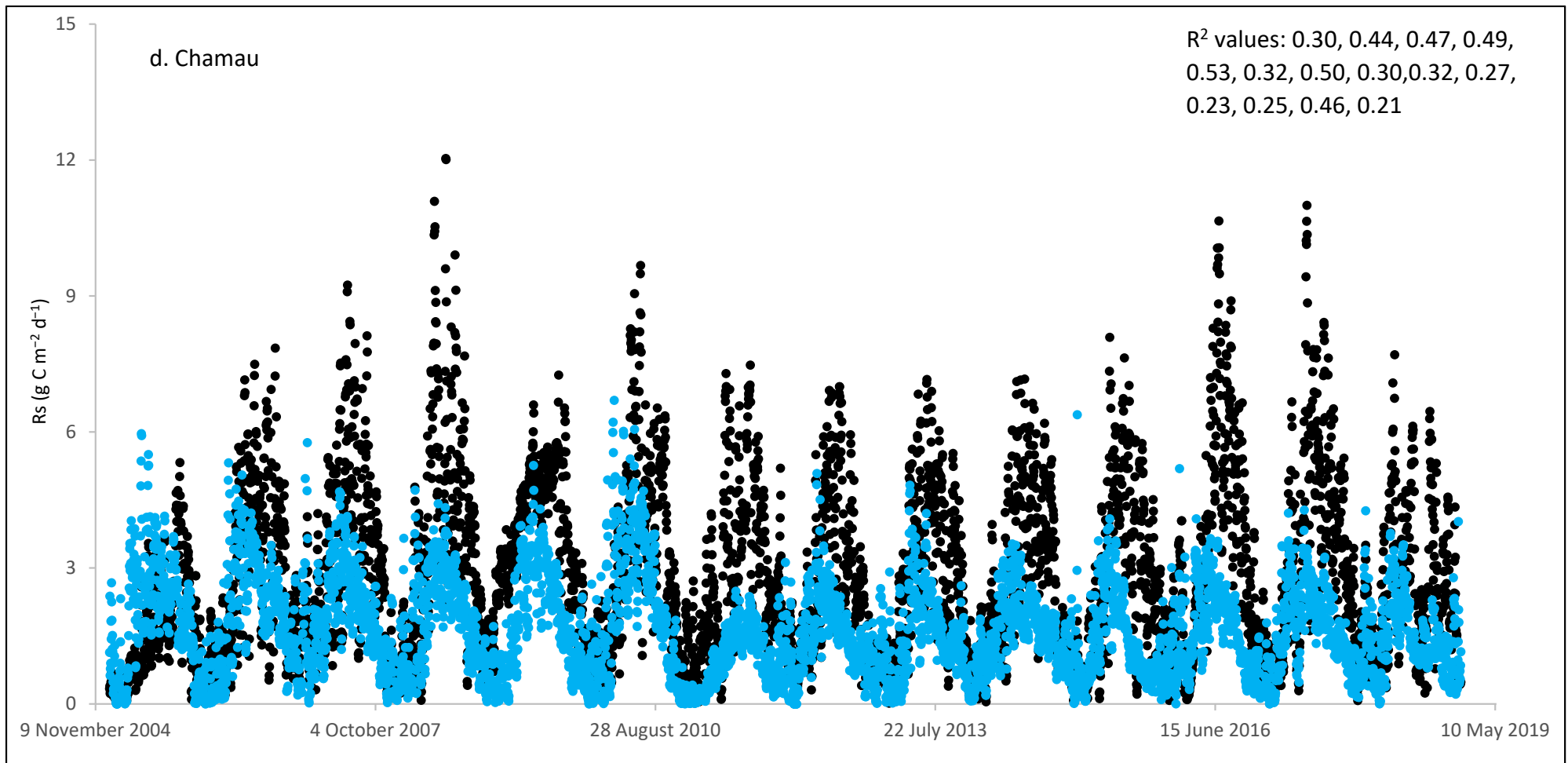


Figure 2. Cont.

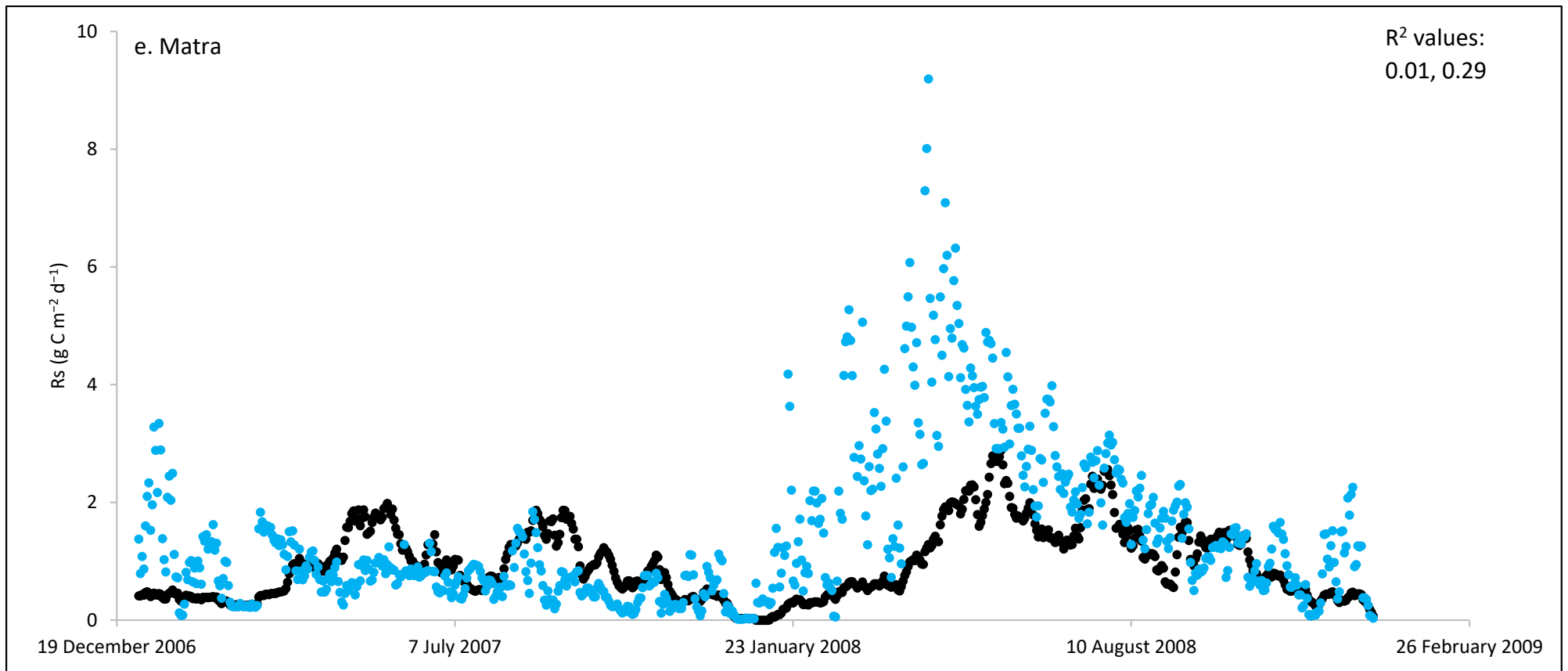


Figure 2. Cont.

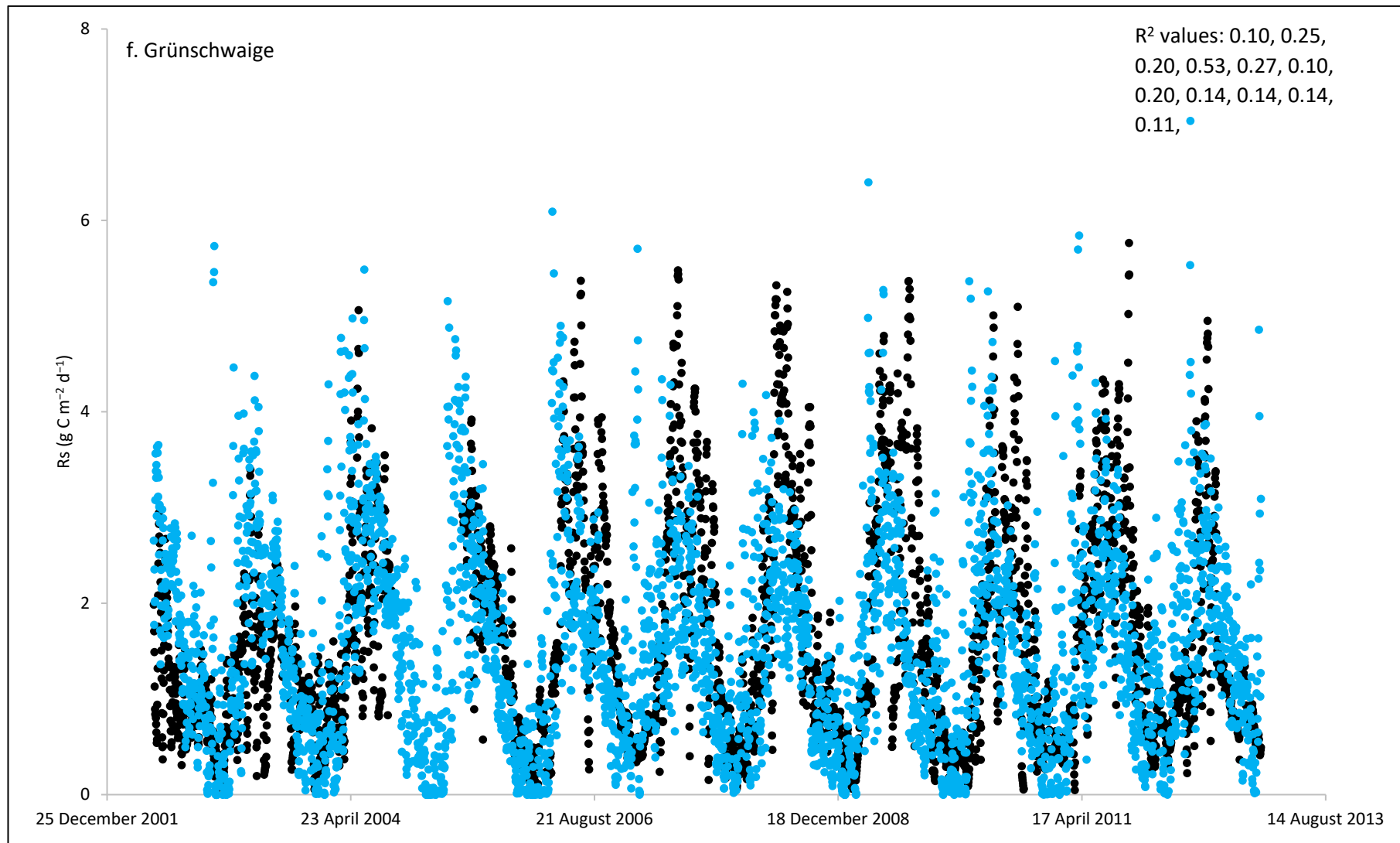


Figure 2. Cont.

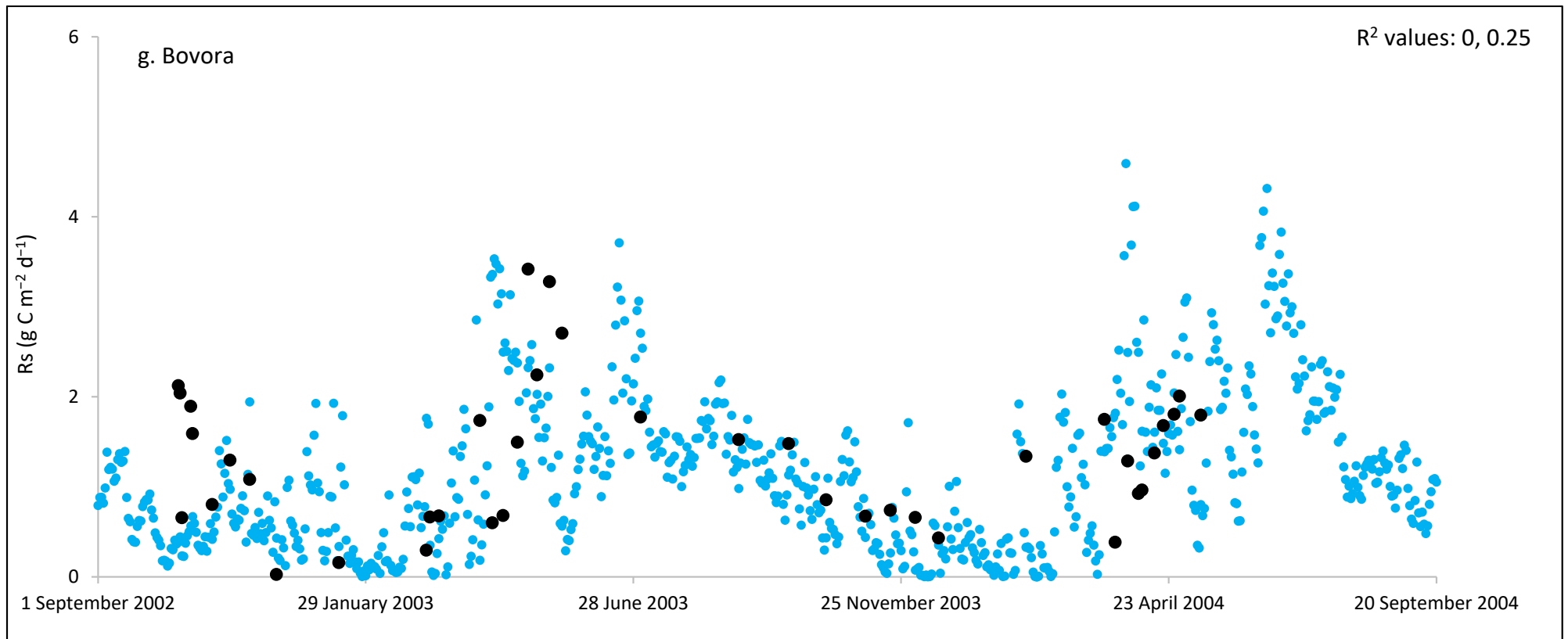


Figure 2. Cont.

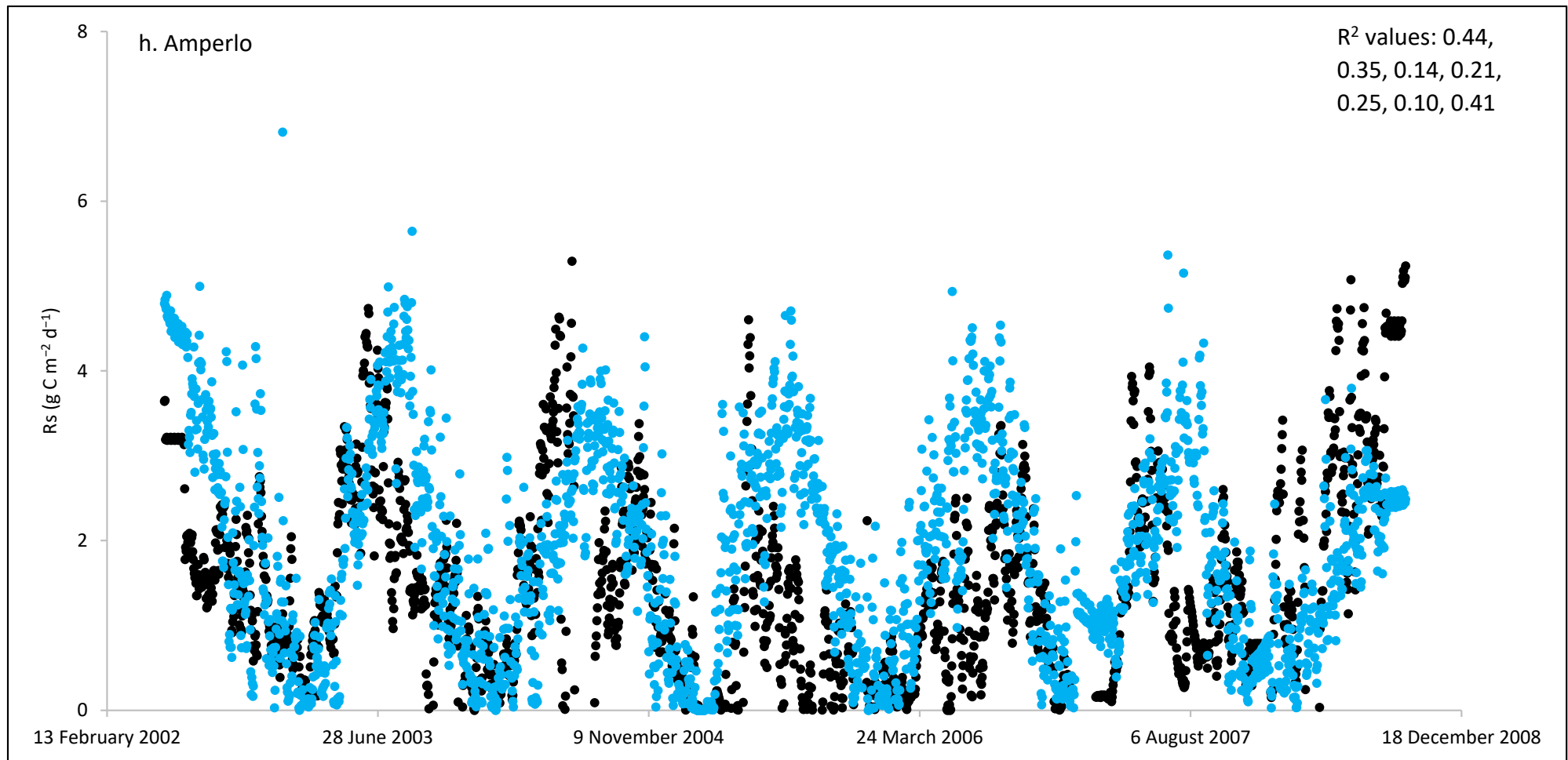


Figure 2. Comparisons between soil respiration (Rs) estimated from ecosystem respiration (black closed circle) and ECOSSE-simulated Rs fluxes (blue closed circle) at (a) Easter Bush, (b) Alp Weissenstein, (c) Neustift, (d) Chamau, (e) Matra, (f) Grünschwaike, (g) Borova, and (h) Amperlo grassland sites. Grass cutting at Easter Bush, Neustift, Chamau, and Matra took place in the period March–August each year. R^2 values are the coefficient of determination between estimated and simulated Rs for the years at each site chronologically.

Peak values of estimated R_s were observed during late summer and autumn, whereas lower values were observed during the wintertime (Figures 1 and S1). The lowest average daily estimated R_s value of 0.95 g C m^{-2} was found for Matra in Hungary (dry site), whilst the highest daily value of 3.1 g C m^{-2} was derived for Neustift in Austria, which was intensively managed. The low R_s efflux from Matra estimated in this study could be due to the site being dry, with low input and no animal grazing. Soil moisture content has a strong positive relationship with R_s ; however, as it continues to increase and reaches high levels, anaerobic conditions can develop, which can depress aerobic microbial activity and lead to a decrease in soil R_s . This is because, under anaerobic conditions, microbes switch to alternative metabolic pathways that do not produce CO_2 [52,53]. Additionally, Frank et al. [54] found high R_s efflux from a grazed mixed-grass prairie compared with a non-grazed mixed-grass prairie due to the addition of N and C by the grazing animals. Animal grazing leads to changes in vegetation composition, soil structure, nutrient cycling, and microbial communities, which can subsequently affect R_s . Trampling [55] can also impact soil physical properties, such as compaction, which can affect R_s by altering soil oxygen availability.

Cumulative monthly R_s values also followed the seasonal patterns of temperature, with the highest monthly average R_s rates in June, July, and August, and the lowest rates in January, February, November, and December (Figure S2). For all sites, positive regression relationships between daily estimated R_s and daily temperature were found, with regression-R values at the different sites ranging from 0.24 to 0.66 (Figure 3). However, in this study, correlation of R_s with precipitation was weak and inconsistent (data not shown). Solomon et al. [56] found that the variations in both temperature and precipitation rates significantly influenced local and regional R_s fluxes from soils.

However, in order to gain a comprehensive understanding of carbon cycling and accurately evaluate the influence of climate drivers on R_s flux, it is crucial to take into account the effects of management practices on PG.

Management practices have the potential to alter soil properties and influence soil microbial communities and their diversity [57], and these in turn affect R_s [58]. Although inconsistent, the daily R_s fluxes at the Easter Bush and Chamau sites (i.e., sites where detailed management data were available) decreased after grass cutting and increased after slurry application (Table 4). Cutting of grass affects C cycling and decreases R_s fluxes by decreasing root biomass [48]. Conversely, the carbon and other nutrients present in slurry can enhance productivity and microbial biomass, consequently increasing R_s fluxes from the soils [59]. High WT can decrease R_s due to creation of anaerobic conditions, which are unfavourable for oxidation of SOM, plant debris, and aerobic respiration [60]. Generally, in this study, fluxes of R_s can be explained by the interaction between the above-ground microclimate and belowground metrics. This is due to their interconnectedness and influence on C dynamics. Previous studies using data sets from the investigated sites in this study reported that the CO_2 fluxes were mainly controlled by a set of variables including climate, soil, biomass, and management (e.g., [34–36]).

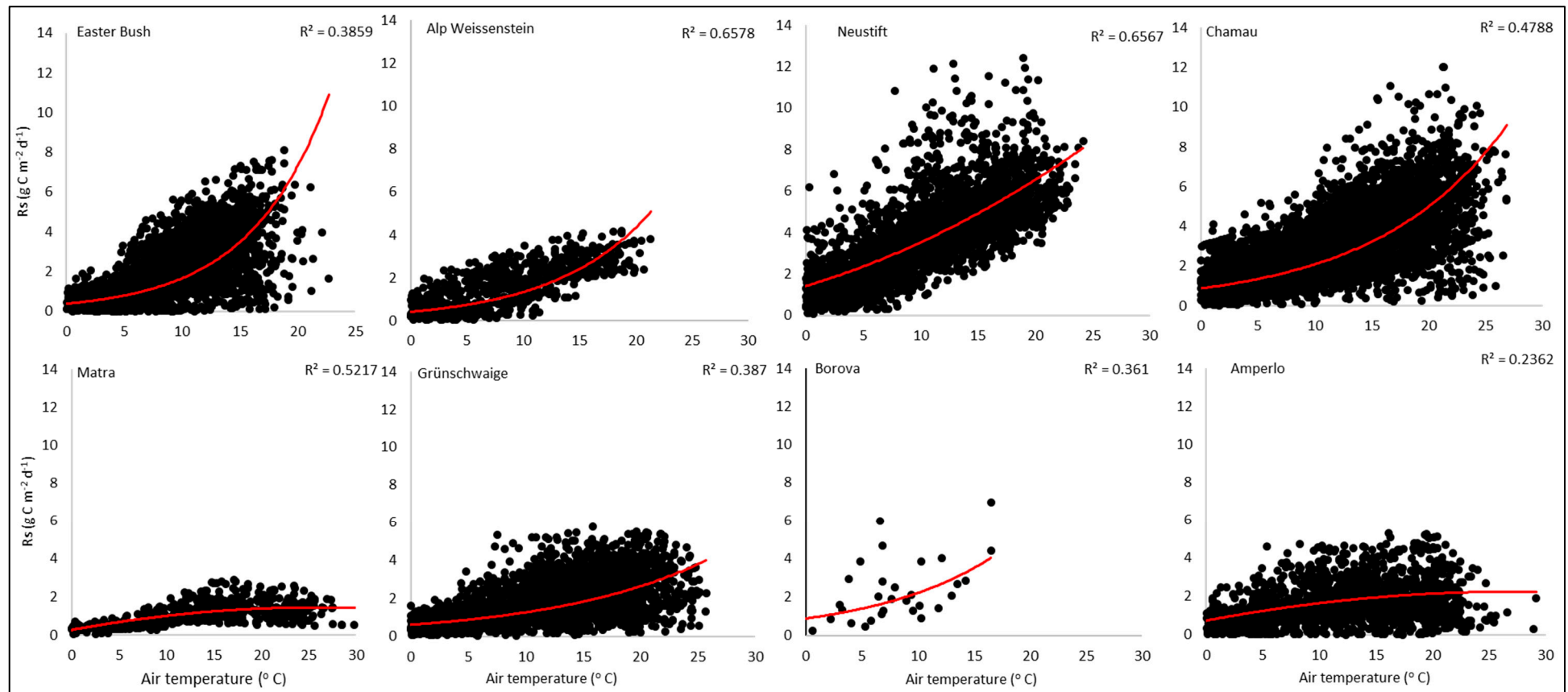


Figure 3. Regression relationships between average daily air temperature ($^{\circ}\text{C}$) and the daily soil respiration fluxes (R_s ; $\text{g C m}^{-2} \text{d}^{-1}$) estimated from ecosystem respiration (R_{eco}) at the investigated sites.

Table 4. Comparisons between estimated and simulated Rs values at Easter Bush (2002–2004) and Chamau (2005–2006) sites, two days following grass cut and slurry application (i.e., values compared were from day two after management).

Site Name	Management	Date (Month/Year)	Estimated Rs (% Change)	Simulated Rs (% Change)
Easter Bush	Grass cut	June 2002	−21	−10
		August 2002	−12	−13
		May 2003	20	25
	Slurry application	September 2004	15	15
		April 2005	33	0
Chamau	Grass cut	May 2005	−36	−32
		June 2005	−44	−31
		July 2005	17	8
		August 2005	−10	−14
		July 2006	−56	−24
		July 2006	−2	2
		September 2006	90	55
		Slurry application	May 2005	84
	Slurry application	June 2005	46	31
		August 2005	13	10
		December 2005	−29	27
		March 2006	58	>100
		May 2006	−43	−1
		June 2006	>100	3
		July 2006	38	16
		August 2006	−16	−19

3.2. Model Sensitivity and Attribution

The ECOSSE attribution analysis revealed that the model is sensitive to the input parameters. ECOSSE showed similar responses in all grassland sites except for Matra, where the responses to changes of two input parameters were different, i.e., decreasing rainfall (Rain−30%), decreased Rs, and decreasing SOC (SOC−30%) increased Rs fluxes (Table 5). This site was a dry and low-input site, with low daily and annual cumulative Rs fluxes. This is in agreement with other studies, which suggest that soil drying reduces Rs due to soil moisture deficit, which limits microbial activities [61]. Overall, Rs values increased with increasing mean daily air temperature, depth to WT, SOC, and soil pH, but decreased with increasing daily precipitation (Table 5). Across all sites, increases in Rs fluxes, ranging from 16 to 25% and from 2 to 16%, were calculated when the daily mean temperature increased by 3 °C and SOC increased by 30%, respectively. Decreasing the temperature by 3 °C, compared with the original temperature, and SOC by 30% decreased the Rs flux by 11 to 23% and by 1 to 3%, respectively. Increasing the daily precipitation by 30%, compared with the original precipitation, decreased Rs by 1 to 18%, whilst decreasing the precipitation by 30% increased the flux by up to 11%. Lowering WT by 30 cm increased Rs by up to 16%, whilst a 30% higher pH increased the flux by up to 11%, and a 30% lower pH decreased the flux by up to 16% (Table 5). Previous studies reported that increasing temperature increased Rs rates [18,62]. As plant materials, including leaves, stems, and roots, undergo decomposition in the soil, microbial activity breaks them down. This process leads to the decomposition of organic matter, resulting in the conversion of complex compounds into simpler forms and the release of CO₂ as a by-product. The decomposition process of plant materials is dependent on temperature [63,64], and, consequently, the rate of Rs. Higher soil moisture creates unfavourable conditions for decomposition of SOM [60]. Moreover, decreasing soil pH inhibits microbial utilisation of substrates and thereby decreases Rs [65].

Table 5. ECOSSE sensitivity and attribution response of the soil respiration (Rs) fluxes to changes in soil properties and climate input factors at the investigated sites. The original daily temperature was increased or decreased by 3 °C, whilst precipitation, soil organic carbon, and pH were increased or decreased by 30%. The water table depth was lowered by 30 cm. Changes (%) were calculated in comparison with the model output using the original measured input data. Matra was not included as the response to changes parameters at this site was minor.

Site/Location	Temp+	Temp−	Rain+	Rain−	SOC+	SOC−	pH+	pH−	WT+
Easter Bush/UK	20.1	−23.0	−0.6	0.0	4.3	−0.8	0.4	−2.2	0.0
Alp Weissenstein/CH	25.5	−22.4	−17.7	10.9	2.2	−2.6	0.0	−6.3	11.3
Neustift/AT	21.6	−19.1	−10.1	1.6	7.4	−2.5	0.0	−5.1	14.1
Chamau/CH	21.4	−19.2	−5.5	0.0	3.1	−2.5	0.0	−11.1	4.7
Matra/HU	16.0	−11.3	−6.0	−5.8	4.5	1.9	11.2	−2.5	0.0
Grünschwaige/DE	21.8	−20.1	−1.4	0.0	2.1	−2.2	0.0	−11.5	4.8
Borova/CZ	22.4	−21.5	−1.2	1.6	0.6	−0.6	0.0	−6.4	16.2
Amperlo/IT	24.4	−22.1	−7.2	5.7	15.6	−2.2	5.7	−15.7	8.1

3.3. ECOSSE Simulations

As shown in Figure 2, on many occasions the ECOSSE model was able to capture the seasonal trends, peak values, and timings of estimated Rs fluxes correctly; however, the model often over- or under-estimated their values during warm weather conditions in spring and summer. Evaluation of the ECOSSE model is shown in Table 3, where the estimated Rs fluxes from these grassland sites were compared with the model's outputs. The daily estimated and simulated Rs ranged from 0.95 to 3.1 g CO₂-C m^{−2}, and from 0.72 to 1.58 g CO₂-C m^{−2}, respectively. Summer Rs values ranging from 2.8 to 3.9 g CO₂-C m^{−2} were reported for a temperate grassland in Germany [66]. Differences between estimated and simulated daily Rs were investigated by calculating RMSE and d. The model generally underestimated the flux, with RMSE values ranging from 0.91 to 3.30 g C m^{−2} day^{−1} (Table 3), and d values ranging from 0.28 to 0.87. The R² between estimated and simulated daily Rs values were variable between sites (0.25, 0.52, 0.35, 0.33, 0.22, 0.15, 0.10, and 0.17 for Easter Bush, Alp Weissenstein, Neustift, Chamau, Matra, Grünschwaige, Borova, and Amperlo, respectively) and years within the same site, with the highest value of 0.63 found in Easter Bush (Table 3). Great variabilities in the model fit among the years for each site can be seen from the R² range values between the daily estimated and simulated Rs fluxes. Both estimated and simulated Rs responded to seasonal temperature, precipitation, and management, which have strong impacts on Rs (Figures 2, 3, S1 and S2). These variables impact plant photosynthetic capability, plant growth, and accumulation of litter, which impacts C supply to soil decomposers [67]. As shown in Table 4, on most occasions, both daily estimated and simulated Rs values from Easter Bush and Chamau sites decreased after grass cutting and increased after slurry application. Here, although inconsistent, the model was able to predict estimated Rs following field management. ECOSSE was also able to predict annual cumulative estimated Rs at most of the sites, with an overall RD value (between annual estimated and simulated Rs) of −11.9%. Similar model fits and responses of cumulative Rs flux from grasslands to changes in climate and management parameters using the ECOSSE and DNDC models were reported in the literature [23,68]. The use of a simple generic method to estimate field Rs from the R_{eco} data, use of estimated SOC at some sites, and factors such micronutrient deficiencies and topography, which are not considered in the model, may contribute to the differences in the simulation results. SOC content can vary spatially and temporally due to factors such as land management practices, soil type, and grass types [69]. By not considering these variations in SOC explicitly, the estimation method may not fully capture the heterogeneity of carbon inputs and microbial processes, leading to differences in simulated Rs. Moreover, measurement techniques, sampling variability, and spatial and temporal variability of sampling locations and intervals can all contribute to variability in Rs flux values.

ECOSSE had difficulties in correctly simulating R_s values from the Matra site, which was dry and had low inputs such as no fertilizers, manure, or animal grazing. Moinet et al. [70] found a significantly positive correlation between R_s and soil water content in dry permanent grasslands. This strong dependence of R_s on water content can explain most of the variations in R_s . Additionally, in low input sites, both soil and plant respiration can be reduced by the limited N input [71]. Nitrogen input leads to a decrease in soil C:N ratios by reducing plant species richness, which results in an increase in R_s [66]. Moreover, traditional models such as ECOSSE do not consider the proportion of legume species in the grass sward or microbial mechanisms, which can affect overall productivity and lead to an underestimation of nitrogen and carbon balance in the soil [55], and, consequently, underestimate simulated R_s [37]. Furthermore, these models are not sensitive to common management options used in grasslands, such as nitrification inhibitors and feed supplementation, which can affect nutrient availability. To improve our understanding of R_s , it is crucial to integrate the relationship between substrate supply and the soil biota, and their responses to changes in abiotic soil conditions in the model [72]. Possible refinements to the ECOSSE model could include further improving its sensitivity to grassland management practices and including microbial mechanisms. These improvements could enhance the accuracy and reliability of the model to capture complexity of management practices, account for microbial processes in soils, consider feedback mechanisms, and enhance the model's ability to capture the dynamics of R_s . Further, it is recommended to develop a comprehensive multi-scale observational data-model fusion system that can effectively capture and analyse the intricate interrelationships among different components and variables. This fusion system would enable a holistic understanding of complex systems and provide valuable insights for scientific research and analysis.

4. Conclusions

This study found that the ECOSSE model (v. 5.0.1) has limitations in accurately estimating daily soil respiration (R_s) fluxes, especially in dry and low-input permanent grassland (PG) sites. Additionally, the model does not account for factors such as the proportion of legume species in the grass sward, animal feed supplements, and microbial mechanisms. Therefore, further development and refinement of the model are needed. However, the model is effective in estimating cumulative R_s from PG, and is sensitive to input data related to soil, climate, and management practices. The attribution analysis revealed that R_s increased as temperature, WT, and SOC levels increased, while it decreased with decreasing precipitation. Consequently, management practices that lower the WT depth should be avoided from a carbon emissions perspective, as they could lead to a significant increase in anthropogenic R_s . The model can simulate R_s following grass cutting and slurry application management accurately. Soil respiration can be explained by above-ground microclimate, below-ground metrics, and management practices.

Supplementary Materials: The following supporting information can be downloaded at: <https://www.mdpi.com/article/10.3390/agronomy13071734/s1>, Figure S1: Average daily air temperature (°C; black line) and precipitation (mm; blue line) at the experimental sites during the measurements of net ecosystem respiration; Figure S2: Relationships between estimated (blue bar) and simulated (orange bar) monthly cumulative soil respiration (R_s) and average monthly air temperature (black line) at the investigated sites.

Author Contributions: Conceptualization, M.A.; methodology, M.A.; investigation, M.A.; Resources, I.F., S.H.V., G.W., U.S., K.P., Z.N. and S.H.; formal analysis, M.A.; visualization, M.A.; writing—review and editing, M.A., I.F., S.H.V., G.W., U.S., K.P., Z.N., S.H., P.S., P.N.-P., N.B. and M.R. All authors have read and agreed to the published version of the manuscript.

Funding: This work is funded by the Super-G project (funded under EU Horizon 2020 programme: project number 774124).

Data Availability Statement: The data presented in this study are available on request from the corresponding author.

Acknowledgments: We are grateful to Lukas Hörtnagl, Keller Sabina, Shiva Ghiasi and people from other investigated sites for providing us with the data.

Conflicts of Interest: The authors declare no conflict of interest.

References

1. IPCC. *Climate Change 2021: The Physical Science Basis. Contribution of Working Group I to the Sixth Assessment Report of the Intergovernmental Panel on Climate Change*; Cambridge University Press: Cambridge, UK, 2021. Available online: <https://www.ipcc.ch/report/ar6/wg1/> (accessed on 9 November 2022).
2. NOAA Climate. National Oceanic and Atmospheric Administration. Climate Change: Atmospheric Carbon Dioxide. 2022. Available online: <https://www.climate.gov/news-features/understanding-climate/climate-change-atmospheric-carbon-dioxide#:~:text=Based%20on%20the%20annual%20report,setting%20a%20new%20record%20high> (accessed on 9 November 2022).
3. Caldeira, K.; Wickett, M.E. Anthropogenic carbon and ocean pH. *Nature* **2003**, *425*, 365. [[CrossRef](#)] [[PubMed](#)]
4. Byrne, R.H.; Mecking, S.; Feely, R.A.; Liu, X. Direct observations of basin-wide acidification of the North Pacific Ocean. *Geophys. Res. Lett.* **2010**, *37*, L02601. [[CrossRef](#)]
5. Hofmann, G.E.; Smith, J.E.; Johnson, K.S.; Send, U.; Levin, L.A.; Micheli, F.; Paytan, A.; Price, N.N.; Peterson, B.; Takeshita, Y.; et al. High-Frequency Dynamics of Ocean pH: A Multi-Ecosystem Comparison. *PLoS ONE* **2011**, *6*, e28983. [[CrossRef](#)] [[PubMed](#)]
6. Schils, R.L.; Bufe, C.; Rhymer, C.M.; Francksen, R.M.; Klaus, V.H.; Abdalla, M.; Milazzo, F.; Lellei-Kovács, E.; ten Berge, H.; Bertora, C.; et al. Permanent grasslands in Europe: Land use change and intensification decrease their multifunctionality. *Agric. Ecosyst. Environ.* **2022**, *330*, 107891. [[CrossRef](#)]
7. European Commission. Directorate-General for Agriculture and Rural Development. Commission Publishes External Study on Future of EU Livestock (europa.eu). 2020. Available online: https://agriculture.ec.europa.eu/news/commission-publishes-external-study-future-eu-livestock-2020-10-14_en#:~:text=Once%20emissions%20related%20to%20the,of%20total%20agricultural%20GHG%20emissions (accessed on 9 November 2022).
8. Soussana, J.-F.; Tallec, T.; Blanfort, V. Mitigating the greenhouse gas balance of ruminant production systems through carbon sequestration in grasslands. *Int. J. Anim. Biosci.* **2010**, *4*, 334–350. [[CrossRef](#)]
9. Van Den Pol, A.; Becker, T.; Botana Fernandez, A.; Hennessy, T.; Peratoner, G. Social and economic impacts of grass based ruminant production. In Proceedings of the 27th European Grassland Federation General Meeting Cork (EGF 2018), Cork, Ireland, 17–21 June 2018; Horan, B., Hennessy, D., O'Donovan, M., Kennedy, E., McCarthy, B., Finn, J.A., O'Brien, B., Eds.; European Grassland Federation EGF: Zürich, Switzerland, 2018; pp. 697–708.
10. Hussain, R.I.; Walcher, R.; Eder, R.; Allex, B.; Wallner, P.; Hutter, H.-P.; Bauer, N.; Arnberger, A.; Zaller, J.G.; Frank, T. Management of mountainous meadows associated with biodiversity attributes, perceived health benefits and cultural ecosystem services. *Sci. Rep.* **2019**, *9*, 14977. [[CrossRef](#)]
11. Eurostat. Share of Main Land Types in Utilised Agricultural Area (UAA) by NUTS 2 Regions. 2020. Available online: <https://ec.europa.eu/eurostat/statistics-explained/SEPDF/cache/73319.pdf> (accessed on 9 November 2022).
12. Eurostat. Eurostat Regional Yearbook 2013. 2013. Available online: <https://ec.europa.eu/eurostat/web/products-statistical-books/-/ks-ha-13-001> (accessed on 9 November 2022).
13. Follett, R.F.; Reed, D.A. Soil Carbon Sequestration in Grazing Lands: Societal Benefits and Policy Implications. *Rangel. Ecol. Manag.* **2010**, *63*, 4–15. [[CrossRef](#)]
14. Conant, R.T.; Cerri, C.E.P.; Osborne, B.B.; Paustian, K. Grassland management impacts on soil carbon stocks: A new synthesis. *Ecol. Appl.* **2017**, *27*, 662–668. [[CrossRef](#)]
15. Abdalla, M.; Espenberg, M.; Zavattaro, L.; Lellei-Kovács, E.; Mander, U.; Smith, K.; Thorman, R.; Damatirca, C.; Schils, R.; Ten-Berge, H.; et al. Does liming grasslands increase biomass productivity without causing detrimental impacts on net greenhouse gas emissions? *Environ. Pollut.* **2022**, *300*, 118999. [[CrossRef](#)]
16. Folger, P. The Carbon Cycle: Implications for Climate Change and Congress. CRS Report for Congress. 2009. Available online: www.fas.org/sgp/crs/misc/RL34059.pdf (accessed on 9 November 2022).
17. Bernhardt, E.S.; Barber, J.J.; Phippen, J.S.; Taneva, L.; Andrews, J.A.; Schlesinger, W.H. Long-term effects of Free Air CO₂ Enrichment (FACE) on soil respiration. *Biogeochemistry* **2006**, *77*, 91–116. [[CrossRef](#)]
18. Wang, W.; Fang, J. Soil respiration and human effects on global grasslands. *Glob. Planet. Change* **2009**, *67*, 20–28. [[CrossRef](#)]
19. Abdalla, M.A.; Hastings, M.; Bell, J.; Smith, J.U.; Richards, M.; Nilsson, M.B.; Peichl, M.; Löfvenius, M.O.; Lund, M.; Helfter, C.; et al. Simulation of CO₂ and attribution analysis at six European peatland sites using the ECOSSE model. *Wat Air Soil Pollut.* **2014**, *225*, 2182. [[CrossRef](#)]
20. Meyer, N.; Welp, G.; Amelung, W. The temperature sensitivity (Q₁₀) of soil respiration: Controlling factors and spatial prediction at regional scale based on environmental soil classes. *Glob. Biogeochem. Cycles* **2018**, *32*, 306–323. [[CrossRef](#)]
21. Dacal, M.; Delgado-Baquerizo, M.; Barquero, J.; Berhe, A.A.; Gallardo, A.; Maestre, F.T.; Garcí'a-Palacios, P. Temperature Increases Soil Respiration Across Ecosystem Types and Soil Development, But Soil Properties Determine the Magnitude of This Effect. *Ecosystems* **2022**, *25*, 184–198. [[CrossRef](#)]
22. Smith, S.D.; Huxman, T.E.; Zitzer, S.E.; Charlet, T.N.; Housman, D.C.; Coleman, S.; Fenstermaker, L.K.; Seaman, J.R.; Nowak, R.S. Elevated CO₂ increases productivity and invasive species success in an arid ecosystem. *Nature* **2000**, *408*, 79–82. [[CrossRef](#)]

23. Abdalla, M.; Kumar, S.; Jones, M.; Burke, J.; Williams, M. Testing DNDC model for simulating soil respiration and assessing the effects of climate change on the CO₂ gas flux from Irish agriculture. *Glob. Planet. Change* **2011**, *78*, 106–115. [[CrossRef](#)]
24. Zak, D.R.; Pregitzer, K.S.; King, J.S.; Holmes, W.E. Elevated atmospheric CO₂, fine roots and the response of soil microorganisms: A review and hypothesis. *New Phytol.* **2000**, *147*, 201–222. [[CrossRef](#)]
25. Jenkinson, D.S.; Rayner, J.H. The turnover of soil organic matter in some of the Rothamsted classical experiments. *Soil Sci.* **1977**, *123*, 298–305. [[CrossRef](#)]
26. Jenkinson, D.S.; Hart, P.B.S.; Rayner, J.H.; Parry, L.C. Modelling the turnover of organic matter in long-term experiments at Rothamsted. *Intecol Bull.* **1987**, *15*, 1–8.
27. Coleman, K.; Jenkinson, D.S. RothC-26.3: A model for the turnover of carbon in soil. In *Evaluation of Soil Organic Matter Models Using Existing, Long-Term Datasets, NATO ASI Series I*; Powlson, D.S., Smith, P., Smith, J.U., Eds.; Springer: Berlin/Heidelberg, Germany, 1996; Volume 38, pp. 237–246.
28. Bradbury, N.J.; Whitmore, A.P.; Hart, P.B.S.; Jenkinson, D.S. Modelling the fate of nitrogen in crop and soil in the years following the application of ¹⁵N-labelled fertilizer to winter wheat. *J. Agric. Sci.* **1993**, *121*, 363–379. [[CrossRef](#)]
29. Smith, J.U.; Glendining, M.J. A decision support system for optimising the use of nitrogen in crop rotations. Rotations and cropping systems. *Asp. Appl. Biol.* **1996**, *47*, 103–110.
30. Smith, J.; Gottschalk, P.; Bellarby, J.; Richards, M.; Nayak, D.; Coleman, K.; Hillier, J.; Wattenbach, M.; Aitkenhead, M.; Yeluripurti, J.; et al. *Model to Estimate Carbon in Organic Soils-Sequestration and Emissions (ECOSSE) User-Manual*; University of Aberdeen: Aberdeen, UK, 2010; pp. 1–76.
31. Reth, S.; Riechstein, M.; Falge, E. The effect of soil water content, soil temperature, soil pH-value and the root mass on soil CO₂ efflux—A modified model. *Plant Soil* **2005**, *268*, 21–33. [[CrossRef](#)]
32. McMillen, R.T. An eddy correlation technique with extended applicability to non-simple terrain. *Bound Layer Meteorol.* **1988**, *43*, 231–245. [[CrossRef](#)]
33. Aubinet, M.; Vesala, T.; Papale, D. *Eddy Covariance: A Practical Guide to Measurement and Data Analysis*; Springer Atmospheric Science: London, UK, 2012; ISSN 2194-5217.
34. Jones, S.K.; Helfter, C.; Anderson, M.; Coyle, M.; Campbell, C.; Famulari, D.; Di Marco, C.; van Dijk, N.; Topp, C.F.E.; Kiese, R.; et al. The nitrogen, carbon and greenhouse gas budget of a grazed, cut and fertilised temperate grassland. *Biogeosciences* **2017**, *14*, 2069–2088. [[CrossRef](#)]
35. Hiller, R.M.; Zeeman, J.; Eugster, W. Eddy-covariance flux measurements in the complex terrain of an alpine valley in Switzerland. *Bound. Layer Meteorol.* **2008**, *127*, 449–467. [[CrossRef](#)]
36. Wohlfahrt, G.; Anderson-Dunn, M.; Bahn, M.; Balzarolo, M.; Berninger, F.; Campbell, C.; Carrara, A.; Cescatti, A.; Christensen, T.; Dore, S.; et al. Biotic, abiotic and management controls on the net ecosystem CO₂ exchange of European mountain grasslands. *Ecosystems* **2008**, *11*, 1338–1351. [[CrossRef](#)]
37. Fuchs, K.; Hörtnagl, L.; Buchmann, N.; Eugster, W.; Snow, V.; Merbold, L. Management matters: Testing a mitigation strategy for nitrous oxide emissions using legumes on intensively managed grassland. *Biogeosciences* **2018**, *15*, 5519–5543. [[CrossRef](#)]
38. Pintér, K.; Barcza, Z.; Balogh, J.; Czóbel Sz Csintalan Zs Tuba, Z.; Zoltán, N. Interannual variability of grasslands' carbon balance depends on soil type. *Community Ecol.* **2008**, *9* (Suppl. S1), 43–48. [[CrossRef](#)]
39. Hirl, R.T.; Schnyder, H.; Ostler, U.; Schäufele, R.; Schleip, I.; Vetter, S.; Auerswald, K.; Baca Cabrera, J.C.; Wingate, L.; Barbour, M.M.; et al. The ¹⁸O ecohydrology of a grassland ecosystem—Predictions and observations. *Hydrol. Earth Syst. Sci.* **2019**, *23*, 2581–2600. [[CrossRef](#)]
40. Cuhel, J.; šimek, M.; Laughlin, R.J.; Bru, D.; Chêneby, D.; Watson, C.J.; Philippot, L. Insights into the effect of soil pH on N₂O and N₂ emissions and denitrifier community size and activity. *Appl. Environ. Microbiol.* **2010**, *76*, 870–1878. [[CrossRef](#)]
41. Balzarolo, M.; Balzarolo, M.; Boussetta, S.; Balsamo, G.; Beljaars, A.; Maignan, F.; Calvet, J.-C.; Lafont, S.; Barbu, A.; Poulter, B.; et al. Evaluating the potential of large-scale simulations to predict carbon fluxes of terrestrial ecosystems over a European Eddy Covariance network. *Biogeosciences* **2014**, *11*, 266–2678. [[CrossRef](#)]
42. Hardie, S.M.L.; Garnett, M.H.; Fallick, A.E.; Ostle, N.J.; Rowland, A.P. Bomb ¹⁴C analysis of ecosystem respiration reveals that peatland vegetation facilitates release of old carbon. *Geoderma* **2009**, *153*, 393–401. [[CrossRef](#)]
43. Wu, L.; McGechan, M.B. A review of carbon and nitrogen processes in four soil nitrogen dynamics models. *J. Agric. Eng. Res.* **1998**, *69*, 279–305. [[CrossRef](#)]
44. Thornthwaite, C.W. An approach toward a rational classification of climate. *Geogr. Rev.* **1948**, *38*, 55–94. [[CrossRef](#)]
45. Smith, J.; Smith, P. *Environmental Modelling: An Introduction*; Oxford University Press: Oxford, UK, 2007; pp. 1–178.
46. Smith, P.; Smith, J.U.; Powlson, D.S.; McGill, W.B.; Arah, J.R.M.; Chertov, O.G.; Coleman, K.; Franko, U.; Frohling, S.; Jenkinson, D.S.; et al. A comparison of the performance of nine soil organic matter models using seven long-term experimental datasets. *Geoderma* **2007**, *81*, 153–225. [[CrossRef](#)]
47. Cai, Z.; Swamoto, T.; Li, C.; Kang, G.; Boonjawat, J.; Mosier, A.; Wassmann, R.; Tsuruta, H. Field validation of the DNDC-model for greenhouse gas emissions in East Asian cropping systems. *Glob. Biogeochem. Cycles* **2003**, *17*, 1107. [[CrossRef](#)]
48. Bahn, M.; Rodeghiero, M.; Anderson-Dunn, M.; Dore, S.; Gimeno, C.; Dröslér, M.; Williams, M.; Ammann, C.; Berninger, F.; Flechard, C.; et al. Soil Respiration in European Grasslands in Relation to Climate and Assimilate Supply. *Ecosystems* **2008**, *11*, 1352–1367. [[CrossRef](#)]

49. Schär, C.; Vidale, P.; Lüthi, D.; Frei, C.; Häberli, C.; Liniger, M.; Appenzeller, C. The role of increasing temperature variability in European summer heatwaves. *Nature* **2004**, *427*, 332–336. [CrossRef]
50. Li, J.; Pei, J.; Pendall, E.; Fang, C. Ming Ni Spatial heterogeneity of temperature sensitivity of soil respiration: A global analysis of field observations. *Soil Biol. Biochem.* **2020**, *141*, 107675. [CrossRef]
51. Carbone, M.S.; Winston, G.C.; Trumbore, S.E. Soil respiration in perennial grass and shrub ecosystems: Linking environmental controls with plant and microbial sources on seasonal and diel timescales. *J. Geophys. Res.* **2008**, *113*, G02022. [CrossRef]
52. Liu, X.Z.; Wan, S.Q.; Su, B.; Hui, D.F.; Luo, Y.Q. Response of soil CO₂ efflux to water manipulation in a tallgrass prairie ecosystem. *Plant Soil* **2002**, *240*, 213–223. [CrossRef]
53. Xu, L.K.; Baldocchi, D.D.; Tang, J.W. How soil moisture, rain pulses, and growth alter the response of ecosystem respiration to temperature. *Glob. Biogeochem. Cycles* **2004**, *18*, GB4002. [CrossRef]
54. Frank, A.B.; Liebig, M.A.; Hanson, J.D. Soil carbon dioxide fluxes in northern semiarid grasslands. *Soil Biol. Biochem.* **2002**, *34*, 1235–1241. [CrossRef]
55. Hamza, M.A.; Anderson, W.K. Soil compaction in cropping systems: A review of the nature, causes and possible solutions. *Soil Tillage Res.* **2005**, *82*, 121–145. [CrossRef]
56. Solomon, S.; Qin, D.; Manning, M.; Chen, Z.; Marquis, M.; Averyt, K.B.; Tignor, M.; Miller, H.L. IPCC Fourth Assessment Report: Climate Change 2007, Cambridge Univ Press, Cambridge, UK, Climate Change 2007: Working Group I: The Physical Science Basis. 2008. Available online: <https://www.ipcc.ch/site/assets/uploads/2018/02/ar4-wg1-frontmatter-1.pdf> (accessed on 9 November 2022).
57. Cantarel, A.A.M.; Bloor, J.M.G.; Pommier, T.; Guillaumaud, N.; Moirrot, C.; Soussana, J.-F.; Poly, F. Four years of experimental climate change modifies the microbial drivers of N₂O fluxes in an upland grassland ecosystem. *Glob. Change Biol.* **2012**, *18*, 2520–2531. [CrossRef]
58. Wieder, W.R.; Bonan, G.B.; Allison, S.D. Global soil carbon projections are improved by modelling microbial processes. *Nat. Clim. Change* **2013**, *3*, 909–912. [CrossRef]
59. De Goede, R.G.M.; Brussaard, L.; Akkermans, A.D.L. On-farm impact of cattle slurry manure management on biological soil quality. *NJAS Wagening. J. Life Sci.* **2003**, *51*, 103–133. [CrossRef]
60. Asmuß, T.; Bechtold, M.; Tiemeyer, B. On the Potential of Sentinel-1 for High Resolution Monitoring of Water Table Dynamics in Grasslands on Organic Soils. *Remote Sens.* **2019**, *11*, 1659. [CrossRef]
61. Clair, S.B.S.T.; Sudderth, E.A.; Fischer, M.L.; Torn, M.S.; Stuart, S.A.; Salve, R.; Eggett, D.L.; Ackerly, D.D. Soil drying and nitrogen availability modulate carbon and water exchange over a range of annual precipitation totals and grassland vegetation types. *Glob. Change Biol.* **2009**, *15*, 3018–3030. [CrossRef]
62. Davidson, E.A.; Belk, E.; Boone, R.D. Soil water content and temperature as independent or confounded factors controlling soil respiration in a temperate mixed hardwood forest. *Glob. Change Biol.* **1998**, *4*, 217–227. [CrossRef]
63. Shaver, G.R.; Canadell, J.; Chapin, F.S.I.I.I.; Gurevitch, J.; Harte, J.; Henry, G.; Ineson, P.; Jonasson, S.; Melillo, J.; Pitelka, L.; et al. Global warming and terrestrial ecosystems: A conceptual framework for analysis. *Bioscience* **2000**, *50*, 871–882. [CrossRef]
64. Shaw, M.R.; Harte, J. Control of litter decomposition in a subalpine meadow-sagebrush steppe ecotone under climate change. *Ecol. Appl.* **2001**, *11*, 1206–1223.
65. Chen, D.; Li, J.; Lan, Z.; Hu, S.; Bai, Y. Soil acidification exerts a greater control on soil respiration than soil nitrogen availability in grasslands subjected to long-term nitrogen enrichment. *Funct. Ecol.* **2016**, *30*, 658–669. [CrossRef]
66. Apostolakis, A.; Schöning, I.; Michalzik, B.; Klaus, V.H.; Boeddinghaus, R.S.; Kandeler, E.; Marhan, S.; Bolliger, R.; Fischer, M.; Prati, D.; et al. Drivers of soil respiration across a management intensity gradient in temperate grasslands under drought. *Nutr. Cycl. Agroecosyst.* **2022**, *124*, 101–116. [CrossRef]
67. Sankaran, M.; Augustine, D.J. Large herbivores suppress decomposer abundance in a semiarid grazing ecosystem. *Ecology* **2004**, *85*, 1052–1061. [CrossRef]
68. Barneze, A.S.; Abdalla, M.; Whitaker, J.; McNamara, N.P.; Ostle, N.J. Predicted Soil Greenhouse Gas Emissions from Climate X Management Interactions in Temperate Grassland. *Agronomy* **2022**, *12*, 3055. [CrossRef]
69. Scharlemann, J.P.W.; Tanner, E.V.J.; Hiederer, R.; Kapos, V. Global soil carbon: Understanding and managing the largest terrestrial carbon pool. *Carbon Manag.* **2014**, *5*, 81–91. [CrossRef]
70. Moinet, G.Y.K.; Midwood, A.J.; Hunt, J.E.; Rumpel, C.; Millard, P.; Chabbi, A. Grassland Management Influences the Response of Soil Respiration to Drought. *Agronomy* **2019**, *9*, 124. [CrossRef]
71. Sándor, R.; Ehrhardt, F.; Brill, L.; Carozzi, M.; Recous, S.; Smith, P.; Snow, V.; Soussana, J.-F.; Dorich, C.D.; Fuchs, K.; et al. The use of biogeochemical models to evaluate mitigation of greenhouse gas emissions from managed grasslands. *Sci. Total Environ.* **2018**, *642*, 292–306. [CrossRef]
72. Subke, J.A.; Bahn, M. On the ‘temperature sensitivity’ of soil respiration: Can we use the immeasurable to predict the unknown? *Soil Biol. Biochem.* **2010**, *42*, 1653–1656. [CrossRef]

Disclaimer/Publisher’s Note: The statements, opinions and data contained in all publications are solely those of the individual author(s) and contributor(s) and not of MDPI and/or the editor(s). MDPI and/or the editor(s) disclaim responsibility for any injury to people or property resulting from any ideas, methods, instructions or products referred to in the content.