

Research



**Cite this article:** Nisbet EG, Dlugokencky EJ, Fisher RE, France JL, Lowry D, Manning MR, Michel SE, Warwick NJ. 2021 Atmospheric methane and nitrous oxide: challenges along the path to Net Zero. *Phil. Trans. R. Soc. A* **379**: 20200457.

<https://doi.org/10.1098/rsta.2020.0457>

Accepted: 6 July 2021

One contribution of 12 to a discussion meeting issue 'Rising methane: is warming feeding warming? (part 1)'.

**Subject Areas:**

atmospheric science, biogeochemistry

**Keywords:**

atmospheric methane growth, nitrous oxide growth

**Author for correspondence:**

Euan G. Nisbet

e-mail: [e.nisbet@rhul.ac.uk](mailto:e.nisbet@rhul.ac.uk)

# Atmospheric methane and nitrous oxide: challenges along the path to Net Zero

Euan G. Nisbet<sup>1,5</sup>, Edward J. Dlugokencky<sup>2</sup>,  
Rebecca E. Fisher<sup>1</sup>, James L. France<sup>1,6</sup>, David Lowry<sup>1</sup>,  
Martin R. Manning<sup>3</sup>, Sylvia E. Michel<sup>4</sup> and  
Nicola J. Warwick<sup>5</sup>

<sup>1</sup>Department of Earth Sciences, Royal Holloway, University of London, Egham TW20 0EX, UK


<sup>2</sup>US National Oceanic and Atmospheric Administration, Global Monitoring Laboratory, 325 Broadway, Boulder, CO 80305, USA

<sup>3</sup>New Zealand Climate Change Research Institute, School of Geography Environment and Earth Studies, Victoria University of Wellington, Wellington, New Zealand

<sup>4</sup>Institute of Arctic and Antarctic Research, Univ. of Colorado, Boulder, CO 80309-0450, USA

<sup>5</sup>NCAS, Department of Chemistry, University of Cambridge, Lensfield Road, Cambridge CB2 1EW, UK

<sup>6</sup>British Antarctic Survey, Natural Environment Research Council, Cambridge CB3 0ET, UK

 EGN, 0000-0001-8379-857X; EJD, 0000-0003-0612-6985; JLF, 0000-0002-8785-1240

The causes of methane's renewed rise since 2007, accelerated growth from 2014 and record rise in 2020, concurrent with an isotopic shift to values more depleted in <sup>13</sup>C, remain poorly understood. This rise is the dominant departure from greenhouse gas scenarios that limit global heating to less than 2°C. Thus a comprehensive understanding of methane sources and sinks, their trends and inter-annual variations are becoming more urgent. Efforts to quantify both sources and sinks and understand latitudinal and seasonal variations will improve our understanding of the methane cycle and

© 2021 The Authors. Published by the Royal Society under the terms of the Creative Commons Attribution License <http://creativecommons.org/licenses/by/4.0/>, which permits unrestricted use, provided the original author and source are credited.

its anthropogenic component. Nationally declared emissions inventories under the UN Framework Convention on Climate Change (UNFCCC) and promised contributions to emissions reductions under the UNFCCC Paris Agreement need to be verified independently by top-down observation. Furthermore, indirect effects on natural emissions, such as changes in aquatic ecosystems, also need to be quantified. Nitrous oxide is even more poorly understood. Despite this, options for mitigating methane and nitrous oxide emissions are improving rapidly, both in cutting emissions from gas, oil and coal extraction and use, and also from agricultural and waste sources. Reductions in methane and nitrous oxide emission are arguably among the most attractive immediate options for climate action.

This article is part of a discussion meeting issue 'Rising methane: is warming feeding warming? (part 1)'.

## 1. Introduction

Methane is a major climate forcing anthropogenic trace gas, central to our efforts to mitigate climate warming [1,2]. After reaching steady state in 1999–2006, methane's atmospheric burden began rising strongly from 2007 (figures 1 and 2). Growth accelerated in 2014 and again in 2018 and 2019 (figure 2). Preliminary evaluation indicates exceptionally strong rise in 2020, with an initial estimate of greater than 15 ppb growth ([https://gml.noaa.gov/ccgg/trends\\_ch4/](https://gml.noaa.gov/ccgg/trends_ch4/)). This is an initial estimate likely to be adjusted as further data are acquired, as seasonality means that annual global growth trend estimates cannot be firmly established until some months into the following year. Nevertheless, methane's increase through 2020 (e.g. January 2020 1873.4 ppb; January 2021 1893.4 ppb) is clearly comparable to the highest annual rise in the detailed observational record.

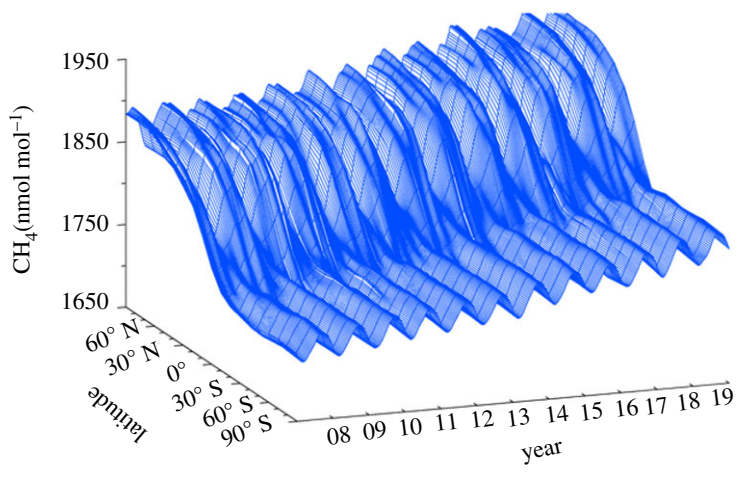
The geographical regions leading the post-2007 rise appear to be primarily in the tropics and low latitude temperate north, although in some years rapid growth has been global. Concurrent with the post-2007 rise, methane's carbon stable isotope ratio has shifted to lighter, more  $^{13}\text{C}$ -depleted values.

Questions abound: Why is methane rising so fast? Are source emissions rising, or sinks falling, decreasing the magnitude of removal processes, or both? To what extent is this directly driven by anthropogenic sources? Or are climate warming feedbacks also occurring, especially in the tropics and Arctic, for example as wetlands warm or cows flourish in future warmer wetter moist tropics?

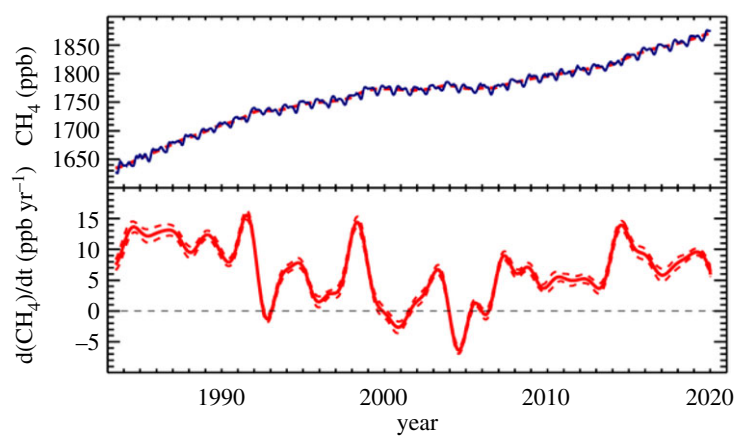
The causes driving methane's recent rise are not fully understood [3], but much of the recent rise seems to stem from tropical and warm temperate biological sources, such as cattle, wetlands and landfills [4]. Recent carbon-14 isotopic work suggests that geological emissions are smaller than hitherto thought [5], and that fossil fuel inputs are larger than used in most source budgets [6]. The major sinks, destruction by atmospheric hydroxyl (OH), chlorine atoms (Cl) and oxidation by bacteria in soils, may also be changing [7,8].

The increase in methane's effective radiative forcing from 1750 to 2014 is substantial and has been recently estimated as  $0.67 \pm 0.17 \text{ W m}^{-2}$  [9–11] with a total forcing of about  $1 \text{ W m}^{-2}$  since 1750 if indirect impacts are included, such as increased  $\text{NO}_x$  and effects on [OH] [12]. Methane contributes to about a third of tropospheric  $\text{O}_3$  [13], which makes the largest indirect contribution, and methane also contributes to stratospheric water vapour. Thus methane's forcing may be nearly half the  $2.1 \text{ W m}^{-2}$  impact of anthropogenic  $\text{CO}_2$  in 2020 [14]. Overall, methane is responsible for a significant fraction of the total post-1750 forcing due to all well mixed anthropogenic greenhouse gases.

Monitoring laboratories worldwide maintain the key *in situ* measurements of methane [15]. This gives a potent geographical and seasonal record, to track  $\text{CH}_4$  from pole to pole at large spatial scales, and to assess inter-annual variation as well as long-term growth. *In situ* measurements from stations are supplemented by measurements from aircraft [16] and ships [17]. Satellite retrievals [18–23] give total column pictures, but accuracy in source estimates is



**Figure 1.** Record of zonally averaged methane in the marine boundary layer, 2008–2019, from NOAA's Cooperative Global Air Sampling Network. Surface shows atmospheric methane as a function of latitude ( $10^\circ$  spacing) and time (48 steps per year). Rear of plot: North Pole. Front of plot: South Pole. Note renewed growth from 2008, increasing in 2014. E. Dlugokencky, NOAA. (Online version in colour.)



**Figure 2.** Upper panel: Global monthly mean methane record from the NOAA collaborative global network. Lower panel: Annual growth rates in global methane: note strong growth in the 1980s, reduced growth in many years in the 1990s, stabilization 1999–2006 and renewed growth from 2007. Plots show data to 1 January 2020; more recent data show very strong growth. (Online version in colour.)

difficult to achieve, with averaging kernels peaking in the mid-troposphere, and inferences about emission budgets have wide errors. Zeng *et al.* [24] note that inferring causal linkage between methane observations from space and local surface emissions requires retrievals to be coupled to chemical transport models that cover long-range atmospheric transport. Moreover, currently useful isotopic retrieval to identify methane sources is not currently possible from satellite observation.

Methane has a marked pole-to-pole gradient, with a sharp discontinuity over the inter-tropical convergence zone. This inter-hemispheric contrast was smaller in glacial time [25] and today reflects the dominance of major anthropogenically influenced emissions in the land masses of the Northern Hemisphere. There is strong inter-annual variation, and it is not clear to what extent inter-annual variations are driven by source and sink fluctuations linked to climatic cycles like

ENSO, or are primarily driven by inter-annual variations in anthropogenic or natural source activity (which themselves can be influenced by the ENSO cycle).

## 2. The debate about sources and sinks

Budgets of national, regional and global emissions remain uncertain, with major gaps between top-down and bottom-up estimates [26–29]. ‘Top-down’ calculations use measurements of methane and its isotopes in the air and understanding of the known sinks to estimate emissions. ‘Bottom-up’ assessments sum the sources, counting gas and coal leaks, cow breaths, landfill emanations, swamp emissions and the like, but do not demand isotopic balance—for example, volumes of gas consumed multiplied by leakage factors, the number of cows multiplied by nominal emissions per cow, tonnes of coal consumed multiplied by emission rates, etc.

It is not simple to characterize emissions by type. Natural emissions in Holocene time included wetlands, wild ruminants and lightning-lit fires. Anthropogenic emissions include fossil fuel emissions from the gas and coal industry, and thermogenic methane from human-lit fires, as well as biological emissions from landfills, cattle and rice. But farmed cattle have in many areas replaced wild bison, buffalo and antelopes or occupied drained wetlands. Moreover, human-induced climate change is warming wetlands and adding fertilizer run-off, thus increasing natural emissions [30]. It is possible that wetlands may drive much of the methane-climate feedback up to the year 2100 [31]. How should these complex factors be categorized and quantified?

Top-down source assessment, for example by inverse modelling, is aided by the geographical and seasonal information that comes from globally *distributed in situ* measurement time series, and by isotopic tracking [3,23,32]. Regional budgets vary strongly depending on latitude (e.g. the contrast between industrialized northern nations, and the wetland and cow-rich tropics [33]). Tropical emissions are still poorly constrained, due to the scarcity of measurement data, especially for methane isotopes, but likely play a central role in driving recent growth [4,32]. Natural emissions are likely rising both in the rapidly changing moist tropics, and in the northern latitudes with thermokarst development and loss of permafrost. It is not clear how much of the growth is from increasing ruminant populations [34,35] and how much from warming wetter wetlands with increasing paludification [36,37], or from intensifying agriculture and rapidly growing urban and industrial processes. Tropical air pollution is also significant (e.g. [38]), both from fires and from industrialization, with implications for the atmospheric chemistry of methane, especially as much methane destruction occurs in the tropical mid-troposphere.

There is little evidence for a dramatic rise in North American emissions driven by fracking [39,40] and other evidence implicates rising emissions from tropical biogenic sources such as cattle and wetlands [4,20,41]. Arctic emissions growth in the 2009–2019 period may have been moderate despite much concern [42]; see also [43], but recently in 2020 the Inter-polar difference increased significantly, reaching levels comparable to those around 1990, before the economic collapse in the former Soviet Union. However, it is not clear what are the relative impacts on the Arctic of a warm/wet year and methane transport in southerly winds from boreal regions. Global ocean emissions remain uncertain but are probably small, around 6–12 Tg yr<sup>-1</sup> [44]. Overall, anthropogenically influenced emissions are growing, particularly from agriculture, landfills and waste [45], and may dominate growth.

Methane’s sinks may also be changing in response to climate change and air pollution—a decline in methane destruction could explain part of the rise in the burden. The main sink is reaction with hydroxyl radicals, [OH], which acts as the guardian of the atmosphere because of its cleansing detergent role in attacking and oxidizing reactive pollutant species. However, [46] find that decreasing [OH] cannot explain the post-2006 global CH<sub>4</sub> increase since the modelled methane burden does not track the observed decrease in global mean  $\delta^{13}\text{C}_{\text{CH}_4}$ .

Current evidence suggests [OH] is not undergoing dramatic step-change at a global scale, but small global trends and more significant ongoing regional changes in methane lifetime may indeed be taking place [7,47–50]. Trends for an [OH] increase of 2% per decade [47] require a

similar increase in sources to reproduce observed concentrations and this is small relative to other uncertainties.

Methane's reaction with [Cl] is a minor sink but has strong isotopic leverage [46]. This has been recently reappraised [51,27,28]. Strode *et al.* [52] found that changing the tropospheric [Cl] field leads approximately to a 0.5‰ increase in  $\delta^{13}\text{C}_{\text{CH}_4}$  for each per cent increase in how much  $\text{CH}_4$  is oxidized by [Cl]. This large leverage on  $\delta^{13}\text{C}_{\text{CH}_4}$  points to the need for better evaluation of the impact of the [Cl] sink.

Soil methanotrophy is a third sink [43,53], as yet poorly quantified, with little known about its response to climate warming. Methane uptake by the soil varies with moisture and temperature, so shifts in seasonal cycles and in longitudinal distribution of the soil sink may have impact, particularly with extreme drought and excess precipitation events on forest soils, both in the tropics and north.

Net upward loss of methane to the stratosphere is also not well constrained. In the brightly lit lower stratosphere, methane destruction by [OH] and [Cl] takes place. This is important in the isotopic budget, as air enriched in  $^{12}\text{C}$  methane by the biological emissions of the tropics rises into the stratosphere above the Inter-Tropical Convergence. The air then moves through the Brewer–Dobson circulation, and returns near the poles, descending to the troposphere via the polar vortex. Here, the remaining methane in the methane-poor descending air is  $^{13}\text{C}$  rich.

### 3. Questions posed by methane's recent growth

Is the change in methane's behaviour in 2007 dominantly caused by human activity, or by climate change feedback responses, or by both drivers? Anthropogenically caused emissions from both agriculture and fossil fuel use were clearly increasing until the onset of the Covid pandemic [54], while Chandra *et al.* [55] point to a mix of increases in emissions from coal mining, mainly in China, and also the intensification of ruminant farming in tropical regions. Tropical wetland emissions, which are isotopically and geographically hard to distinguish from ruminant emissions, may also be increasing [4,32], and there is a significant risk that emissions will grow strongly with warming [56].

Key questions include the size of the fossil fuel sources (the emissions that are most amenable to mitigation), the relative proportion of tropical emissions from ruminants versus wetlands, and the possible existence of emission pulses, for example from major biomass burning events, huge unrecorded fossil fuel industry leaks (e.g. [18,19]) and Arctic permafrost thaw [37]. There is also poor quantification of the global termite and ocean plankton sources, for which estimates have been little updated for some decades.

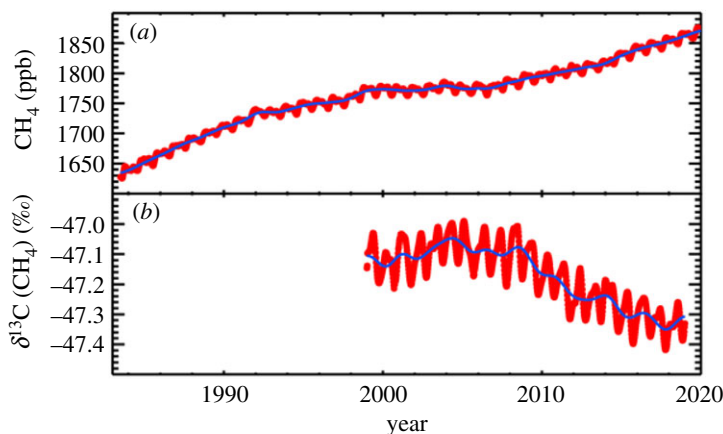
The largest knowledge gap is in the discrepancy between the 'top-down' and 'bottom-up' budgets. The results differ radically, only barely within error margins: Saunio *et al.* [29] find a top-down sum of about 600 Tg for annual emissions, compared to the bottom-up source estimate of about 750 Tg (range about 600–900 Tg). Moreover, the bottom-up estimates imply an annual imbalance of about 120 Tg, hard to reconcile with top-down measurements of annual growth around 5–10 ppb yr<sup>-1</sup> (1 ppb, globally averaged, is about 2.77 Tg—[4]).

### 4. Use of isotopes

Isotopes provide powerful constraints in assessing global and regional methane budgets, the keys that may unlock full budget quantification and verification. In particular, bottom-up budgets need to tally with top-down isotopic measurements. The three most accessible sources of information are  $\delta^{13}\text{C}_{\text{CH}_4}$ ,  $\delta^2\text{H}_{\text{CH}_4}$  and  $^{14}\text{C}$  abundances. In the distant future, polyisotopic time series (e.g.  $\delta^{13}\text{C}^1\text{H}_3^2\text{H}$ ; [57]) may help, but currently it is difficult even to hope for finance to add better  $\delta^2\text{H}_{\text{CH}_4}$  coverage to the present very sparse global dataset.

The recent growth in methane has been accompanied by a concurrent isotopic trend in the global methane burden, now sustained for well over a decade, towards more negative  $\delta^{13}\text{C}_{\text{CH}_4}$ . For two centuries prior to 2007, during the 1750–2007 period of rising methane,  $\delta^{13}\text{C}_{\text{CH}_4}$  had grown





**Figure 3.** Coincidence of start of onset of global growth in the methane burden with the sustained shift towards more negative  $\delta^{13}\text{C}_{\text{CH}_4}$ . Red symbols show weekly global means; blue lines show deseasonalized trends. (a) Global mean atmospheric methane (as in figure 2). (b)  $\delta^{13}\text{C}$  isotopic ratio in atmospheric methane: note synchronicity of negative shift with start of 2007 rise in the upper panel. University of Colorado, INSTAAR and NOAA data. E. Dlugokencky. (Online version in colour.)

steadily more positive due to anthropogenic emissions from anthracitic coal use, oil and gas, and fires. But since 2007, concurrently with the sharp recent rise in the methane burden (figure 2), atmospheric  $\delta^{13}\text{C}_{\text{CH}_4}$  has steadily been shifting negative (figure 3) [4,58]. The data are currently insufficient to determine any global trend in  $\delta^2\text{H}_{\text{CH}_4}$ , although published results [32] show a 2007–2010 decrease in the Arctic (Ny Alesund, Svalbard) and in Antarctica a strong positive trend that had been sustained since 1995 ended in 2007, followed by levelling off until a slight positive shift in 2014.

The causes of the trends remain controversial, with many possible explanations. The possibilities are either (i) a weakening global sink or (ii) increased emissions from methane sources or (iii) changes in both sources and sinks [4,59–61]. The simplest (but not only) explanation of the isotopic shift is that it is dominated by an increasing proportion of emissions from biogenic sources [4,35,62].

Globally, methane's mass and different isotopic budgets must all balance, with inputs equal to removals plus increase in the atmospheric inventory. Sources and sinks have a wide range of impacts on the global budget for  $\delta^{13}\text{C}_{\text{CH}_4}$  [32,63,64] (table 1). Quantification of the global methane budget must satisfy the isotopic algebra, but to date, important global budget assessments [29,30] have not been able to use isotopic constraints.

Globally, regionally and locally, mass balance and isotopic balance apply: inputs must equal removals and outward fluxes. Each source has major latitudinal and seasonal variation across the planet, and sinks are similarly variable with season and latitude. Modelling needs to take this seasonal and latitudinal variability into account. Successful resolution of the global budget must account for both for geographical differences and inter-annual variability in the seasonal cycles for  $\delta^{13}\text{C}_{\text{CH}_4}$ , but this is hard to resolve given the underinvestment in long-term *in situ* time series for isotopic data.

Table 1 compiles approximate isotopic source signatures for major inputs to the global budget. Source inputs and sink impacts balance to give the global atmospheric mix. But source signature information, especially for  $\delta^2\text{H}_{\text{CH}_4}$  remains sparse. Moreover, sources vary greatly, both by latitude for natural sources and locally for anthropogenic emissions. To take one example, the isotopic impact of coal production is complex: methane from anthracitic coals (e.g. used in steel making) tends to be  $^{13}\text{C}$  rich but methane from brown coals and lignite used in power generation can be more depleted than atmospheric methane [78].

Figure 3 compares changes in the mixing ratio and the  $\delta^{13}\text{C}_{\text{CH}_4}$  record. The global methane burden has a  $\delta^{13}\text{C}_{\text{CH}_4}$  value somewhat more negative than  $-47\text{‰}$ , which reflects the impact of

**Table 1.** Approximate isotopic source signatures of the major inputs to the global budget, and the fractionations imposed by the major sinks. Note the caveat that the variability in each source is likely greater than the s.d. shown here.

source	$\delta^{13}\text{C}_{\text{CH}_4}$ (‰) ( $\pm 2$ s.d.) <sup>a</sup>	$\delta^2\text{H}_{\text{CH}_4}$ (‰) ( $\pm 2$ s.d.) <sup>a</sup>	flux ( $\text{Tg yr}^{-1}$ ) <sup>b</sup>
microbial	−62 ( $\pm 12$ )	−317 ( $\pm 66$ )	516 (360–463)
fossil	−45 ( $\pm 21$ )	−197 ( $\pm 102$ )	155 (112–194)
biomass burning	−26 ( $\pm 10$ )	−211 ( $\pm 30$ )	31 (26–46)
sink	$^{13}\text{C}_\varepsilon$ (‰)	$^2\text{H}_\varepsilon$ (‰)	
[OH]	−3.9 <sup>c</sup> , −5.4 <sup>d</sup>	−145 <sup>e</sup> , −200 <sup>f</sup> , −227 <sup>c</sup> −237 <sup>g</sup>	553 (476–677)
soil uptake	−16 to −26 <sup>h,i,j,k</sup>	−90 <sup>k</sup> , −62 <sup>k</sup>	30 (11–49)
tropospheric [Cl]	−62 <sup>l,m</sup>	−337 <sup>n</sup>	11 (1–35)
stratosphere	−3 <sup>o</sup>	—	31 (12–37)

Source signatures and fluxes (with ranges).

<sup>a</sup>Sherwood *et al.* [64].

<sup>b</sup>Saunois *et al.* [29]. Sink fluxes (with ranges) and isotopic fractionation factors (where  $\varepsilon$  is defined as the ratio of the reaction rate constants minus 1, with the rate constant for the more abundant isotopologue as the denominator).

<sup>c</sup>Saueressig *et al.* [65] (296 K).

<sup>d</sup>Cantrell *et al.* [66] (273–353 K).

<sup>e</sup>DeMore [67] (298 K).

<sup>f</sup>Gierczak *et al.* [68] (298 K).

<sup>g</sup>Joelsson *et al.* [69] (298 K).

<sup>h</sup>King *et al.* [70].

<sup>i</sup>Tyler *et al.* [71].

<sup>j</sup>Reeburgh *et al.* [72].

<sup>k</sup>Snover *et al.* [73].

<sup>l</sup>Saueressig *et al.* [74] (297 K).

<sup>m</sup>Crowley *et al.* [75] (298 K).

<sup>n</sup>Saueressig *et al.* [76] (296 K).

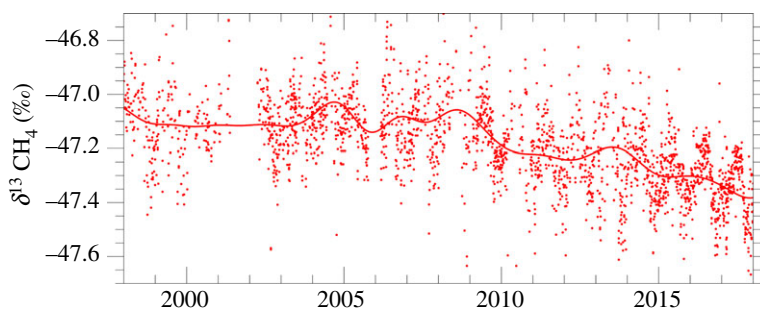
<sup>o</sup>Lassey *et al.* [77].

a bulk global source around  $-53\text{‰}$ , and a sink-imposed shift of about  $6\text{‰}$ , dependent on the relative weightings of the different sinks. For  $\delta^2\text{H}_{\text{CH}_4}$ , the combined sink-imposed shift is much larger, resulting in a  $\delta^2\text{H}_{\text{CH}_4}$  composition of the global burden around  $-90\text{‰}$  that is significantly more enriched in  $^2\text{H}$  than the bulk signature of the sources.

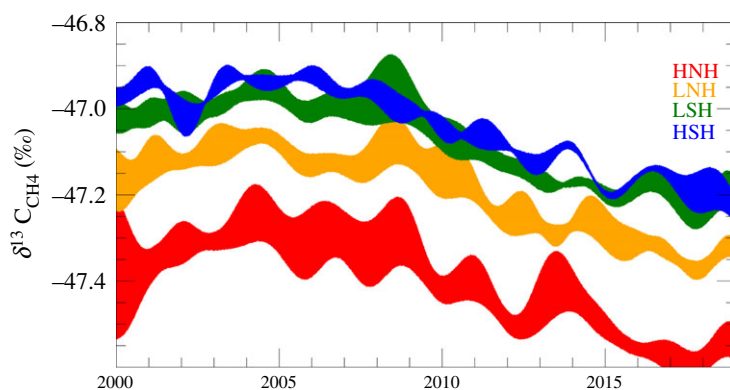
The extent of the seasonality of the changing inputs and inter-annual variation means that isotopic equilibration is never achieved [4]. Figure 4 shows point-by-point data from one station, Mauna Loa, Hawaii, to illustrate the isotopic variability in different airmasses. If the source isotopic signature changes, for example from a major input pulse, the global atmospheric value will also shift, but with a lag that can take decades [79]. Thus the addition of a sharp pulse of new methane from thermogenic fossil fuels ( $\delta^{13}\text{C}_{\text{CH}_4}$  more positive than  $-47\text{‰}$ ) or wetlands (much more negative) will shift the global value for some years, before the sinks bring the isotopic ratio closer to equilibrium.

There is regional and latitudinal information in the isotopic record (figure 5). Since 2007, the negative  $\delta^{13}\text{C}_{\text{CH}_4}$  shift has been sustained across all semi-hemispheres, while the total methane burden has been growing rapidly. A first guess explanation of these changes is that biological sources have grown, causing negative  $\delta^{13}\text{C}_{\text{CH}_4}$  shifts in the temperate Northern Hemisphere in 2007 but since then especially in the tropics and Southern Hemisphere. However, note that these semi-hemispheric trends come from a very small network of stations.

Schwietzke *et al.* [6] used isotopic evidence to find that methane emissions from fossil fuel industries are much higher than hitherto estimated. Similarly, Lassey *et al.* [77] explicitly showed bottom-up compilations were inconsistent with 15 years of  $\Delta^{14}\text{CH}_4$  data from both



**Figure 4.**  $\delta^{13}\text{C}_{\text{CH}_4}$  record from weekly air samples collected at Mauna Loa Observatory, 1998–2017. Note sustained shift to more negative values since 2007. Later data are as yet unvalidated. S.E. Michel. (Online version in colour.)



**Figure 5.** Zonally averaged  $\delta^{13}\text{C}_{\text{CH}_4}$  and its uncertainty range for high latitude Northern Hemisphere (HNH), low latitude Northern Hemisphere (LNH), low latitude Southern Hemisphere (LSH) and high latitude Southern Hemisphere (HSH). These are semi-hemispheres: equator–30° = LNH/LSH and 30–90° = HNH/HSH. For practical purposes, they represent equal volumes of atmosphere, approximately 25% of the global total, each. Uncertainty estimates consider atmospheric variability, analytical uncertainty and the uncertainty of the sampling network. S.E. Michel. (Online version in colour.)

Antarctic firm air and New Zealand air samples. Methane's historic record is held in ice cores, which are revealing surprises: the late glacial and pre-industrial records suggest that geological and other ancient carbon emissions were small [5,80,81]. If this inference is correct, that in turn suggests that nearly all of the fossil emissions observed by Schwietzke *et al.* [6] are anthropogenic and thus increases our estimates of modern fossil fuel emissions, and confidence in constraints on them from 30 years of Southern Hemisphere  $\Delta^{14}\text{C}_{\text{CH}_4}$  data [82]. However, there are alternative explanations, such as emissions from old carbon sources in peat [83], changes in sinks [84], and Fujita *et al.* [32] observed that global fluxes obtained by inverse modelling could overestimate 'prior' biogenic emissions and thus overestimate the proportion of biogenic sources and underestimate fossil fuel and biomass burning.

The problem remains unresolved [4]. The most critical gap in data is arguably the need for multiple high-quality *in situ* measurement time series, including not only measurement of methane's mole fraction but also more  $\delta^{13}\text{C}_{\text{CH}_4}$  and reinstated  $\delta^2\text{H}_{\text{CH}_4}$  time series, from multiple stations, especially in the tropics, where data are very sparse.

## 5. Emission verification

'Trust but verify' was the basis of nuclear weapons treaties: arguably the success of the Nuclear Test Ban came because the negotiators were careful to implement independent external



verification by the Comprehensive Nuclear Test Ban Treaty Organisation (CNTBTO). This was critical to the success of the Treaty. For the Paris Agreement to succeed, there is a strong argument that the United Nations Framework Convention on Climate Change (UNFCCC) needs similar verification of national methane emissions declarations, especially in the tropics where data are very sparse.

But verification is lacking. Compliance with treaty commitments is self-declared by nations. The Paris Agreement and the UNFCCC are self-monitored. Although there are strong parallels between the global Nuclear Test Ban Treaty and the legally binding Paris Agreement treaty on climate change, there is currently no equivalent to CNTBTO for tracking the comparable global commitment to reduce climate-forcing emissions.

The United Nations' World Meteorological Organisation's Global Atmosphere Watch (GAW) is the closest analogue. This is a collaborative partnership of science teams. Through its participants, GAW does maintain SI-traceable standards to calibrate analyser response and ensure data are comparable across international measurement networks. But sustaining monitoring programmes is very challenging, and also unrewarding in a funding environment dominated by hypothesis-testing priorities and publication success. For many sites maintained by university-based scientific teams, there is a problem of 'immediacy'—funded by a chaotic succession of short-term grants demanding rapid impacts and publication, long-term observation is extremely difficult to sustain. Thus long-term funding commitments are absent in most countries. Sustained calibration and the task of ongoing inter-comparison between different laboratories and networks, necessary to maintain global perspective, is especially difficult [85,86].

In this context the multi-decadal commitment of US NOAA's Global Greenhouse Gas Reference Network is critical: it is the solid basis for the bulk of our global understanding. Led by NOAA, our networks have defined the scale of the issues, provided a baseline understanding and give insight to future network and assessment design. But Nisbet *et al.* [4] pointed out that unfortunately, with limited measurement datasets, it is not currently possible to be definitive about global and regional budgets. The paucity of the isotopic record, from so few stations, does demonstrate the urgency of gathering more information, both in monitoring the changing atmosphere, and also in testing global and regional budgets and verifying emissions.

Large discrepancies remain between bottom-up inventory-based assessments and top-down measurements [29]. In many cases, inventory assessments of leakage may be far from what is actually measured [87,88], a problem that may in future be rectified as direct top-down measurement of emissions is increasingly feasible (e.g. [27,28,89,90]).

Satellites are helpful but quantitative and effective verification needs the detailed and isotopic information provided by *in situ* data. The value of *in situ* measurement has been shown by Bergamaschi *et al.* [91], who found total CH<sub>4</sub> emissions of about 27 Tg for the then-28 states of the European Union, which contrasted with the total anthropogenic CH<sub>4</sub> emissions reported to the United Nations Framework Convention on Climate Change, of 21 Tg in 2006 and 19 Tg in 2012.

## 6. Measurement needs

Several points are clear:

- (a) There is strong need for better, more sustained long-term *in situ* measurement time series of methane and its isotopes, in both northern and southern Tropics, including in remote locations in the continental interiors. This is not expensive and currently the USA, Australia, New Zealand and South Africa are carrying a disproportionate share of the burden of Southern Hemisphere observations. New sampling techniques, for example sampling air in the free troposphere using UAVs [92] could contribute much to better understanding of the air in tropical continental interiors.
- (b) Bottom-up emissions inventory budgets need to be isotopically balanced, tested for compatibility with methane actually emitted to the air, to differentiate between source

inputs. Locally and nationally, emissions declarations (e.g. to UNFCCC) need to be tested against isotopic ratios measured in plumes and air masses. On a global scale, the bottom-up isotopic budgets need to be constrained by the time-evolving top-down measurements.

- (c) Top-down assessments of emissions, locally, regionally and globally, must similarly be tested against the isotopic constraints. In particular, there is need to gain better quantification of the impacts of the variability of [OH] and [CI] on the global CH<sub>4</sub> budget.
- (d) Dedicated flux and isotopic measurement campaigns are needed, especially in the tropics, to improve understanding of source signatures, to help strengthen tropical national emission inventories, which are currently rudimentary, and to search for climate warming ‘unknown unknowns’.
- (e) Currently, measurement priorities are primarily focused on mole fraction and  $\delta^{13}\text{C}_{\text{CH}_4}$ , but the information is inadequate to constrain global budget inversions. Measurement of  $\delta^2\text{H}_{\text{CH}_4}$  need to be added to the portfolio of time series measurements, tracking  $\delta^2\text{H}_{\text{CH}_4}$  as it evolves globally, and with much better determination of  $\delta^2\text{H}_{\text{CH}_4}$  isotopic signatures of sources and sink fractionation. Because fractionation of hydrogen isotopes in the reaction with [OH] imposes seasonal and latitudinal gradients on  $\delta^2\text{H}_{\text{CH}_4}$  this may be useful for constraining the [OH] sink.
- (f) More generally, networks and assessment technologies need to be designed to be capable of resolving UNFCCC commitments and policy impacts; thus providing, like CNTBTO, a wholly independent pathway to trust, but also to verify, reported emissions inventories.

## 7. Can mitigation succeed in cutting emissions to Net Zero?

Can we bring methane under control? Mitigation options are rapidly improving, and there is the impetus to reduce our dependence on coal and natural gas. There have been significant recent advances in measurement instruments and the scope for their deployment [93]. This permits better identification and quantification of major anthropogenic sources, facilitating emission reduction. In particular, mitigating gas vents and leaks, and capturing manure and landfill emissions from tropical megacities is increasingly attractive.

Methane potentially provides many good near-future (this decade) mitigation targets. Cutting methane emission is broadly cost-effective compared to methane removal from ambient air [94], though with appropriate technology in appropriate high methane settings, removal may indeed be an option [95,96]. Jackson *et al.* [97] point in particular to the need to more research into removal methods.

For example, in local settings where elevated methane is habitually present in the air (e.g. in cattle barns, or active faces of landfills, removal may be feasible [93]. There are many attractive targets such as cutting emissions from fossil gas use, decarbonizing heating and cooling systems, ending coal mining and burning, reducing landfill and biodigester emissions, and by improving agricultural practices both in temperate and tropical farming [93].

To address these targets in more detail, cutting leaks and deliberate venting from natural gas production sites is an obvious immediate target, and is among the least costly ways to cut greenhouse emissions. Waste is widespread. For example, Lyon *et al.* [98] point to insufficient infrastructure capacity for handling and delivering gas. They suggest the Permian Basin, one of the largest oil and gas producers in the USA, is in a state of overcapacity in which rapid growth in gas production can exceed midstream capacity, leading to high methane emissions. The gas industry has abundant super-emitters, and also emissions from abandoned wells [99]. Ground, airborne and rapidly improving satellite leak-detection and mapping can all be used to identify emitters [100–103].

Decarbonizing heating, transport and electricity generation is critical to meeting Net Zero goals. More generally, it is time to remove all fossil fuels from the global economy [104]. In rebuilding the energy infrastructure, ending methane emission is an obvious first option. Fugitive gas is not only from pipes: there are significant emissions also from domestic boiler exhausts and

from installations like gas governors and offtake stations, which can be also readily mitigated [93]. Simple emission reductions in the gas transmission network can make a significant, inexpensive initial contribution.

In the medium term, there is wide scope in developed nations for shifting fully to electric or solar heating, ending low-pressure gas distribution, perhaps reusing urban local gas pipes for power wires and communication fibres. However, although renewable green hydrogen may be enticing, moves to introduce hydrogen to the domestic supply need careful thought, given the possible impacts of hydrogen leaks on air pollution, on stratospheric ozone and as an indirect greenhouse gas [105]: electrification of heating may be preferable.

Emissions from the global coal industry, during mining, pulverization and use, are poorly quantified but may be very large, around a third of total fossil fuel emissions [29]. Growing Chinese coal emissions may have been a significant supplementary contributor to the recent rise in methane [106]. Coal is increasingly becoming uneconomic as a source of electricity and new renewable plants are becoming more cost-effective than new coal-fired power plants [107], but it may be many decades before this leads to full shut-down of coal power in coal-dependent India, South Africa and China (all of which are very vulnerable to climate change). Coal-sourced methane (and CO<sub>2</sub>) emissions from steel making are globally significant. These can be eliminated if renewable 'green' hydrogen is used as an alternative reductant. If so, hydrogen leaks will need careful attention (see above, and Warwick *et al.* [105]).

There are some clearly egregious methane-emitting excesses in the carbon economy. Wealth stores are examples. Consider mining coal to produce electricity to power Bitcoin mining. This emits CO<sub>2</sub> and methane, imperilling the climate to create a source of wealth that is wholly abstract. One cannot eat a Bitcoin. Gold mining, that older source of wealth, is also highly energy-demanding but at least the gold is then permanently recycled in the economy, useful eventually for many purposes: electronics, jewellery or even in drugs. In parts of tropical Africa, such as South Sudan, cattle are currency [108]: they are used primarily as wealth stores rather than food. Replacing cattle with formal currency (for example via mobile phone banking, increasingly popular in Africa) brings greenhouse gas benefits and may reduce over-stocking and habitat destruction.

Landfills are a very attractive target for mitigation of methane emissions, increasingly so in the African and American tropics and in southern Asia. Sauniois *et al.* [29] estimate global waste emissions as about 65 Tg CH<sub>4</sub> yr<sup>-1</sup> or about 12% of total global anthropogenic emissions. In the UK, through strong legislation, waste sorting and composting, and careful landfill remediation, methane emissions from landfills have decreased by 76% between 1990 and 2018, brought about at relatively low cost and with little political debate, though in the UK methane leaks from biodigesters can be large and need to be controlled [109]. Despite this success, there is more to do as landfill emissions still constitute 28% of total UK methane emissions [110]. Few other nations have been as successful.

For many tropical megacities, waste is dumped in little-sorted, often unmanaged heaps, often on fire. Yet emission reduction is neither difficult nor costly, nor does it demand high skills: this is not high-tech mitigation, but simple good sense. Waste sorting is cheap, to remove and compost organic matter such as waste food. Composting can be both beneficial to local small scale agriculture and also cut the use of N<sub>2</sub>O-releasing fertilizers. Biogas production from organic matter can be profitable in cities far from gas sources, Waste piles can be piped to extract gas. Methanotroph-hosting soil cover is a very inexpensive way of reducing methane emissions and other gas hazards [53,93,111]. Yet in India, the overwhelming bulk of waste is put into open dumps without further treatment [112]. Widely for many tropical megacities, landfill soil cover can be thin, slow or wholly lacking.

Harmsen *et al.* [113] show that strong attention must be paid to tackling agricultural emissions, both in temperate and tropical agriculture [114,115]. Ku-Vera *et al.* [116] have shown that in cattle grazing low-quality tropical forages it should be possible to find ways to mitigate enteric CH<sub>4</sub> emission yet effectively increase efficiency and productivity. In developed nations, rapid

and inexpensive reduction of emissions should be possible with better aeration of anaerobic agricultural manure pools.

Smith *et al.* [117] make the strong point that moving half of human nutrition to vegetarian diets and reducing food waste by half might reduce methane emissions by around greater than 50 Tg CH<sub>4</sub> yr<sup>-1</sup>. Reducing 'industrial' dairy farming, with its manure tanks, by switching to more expensive milk from 'organic' dairy cattle would likely cut emissions but may not be popular. In agriculture, methane is not the only emission: apart from CO<sub>2</sub> from energy use, N<sub>2</sub>O is a major emission (see §8 below). There is a danger that reducing emissions of one gas (e.g. methane) may increase emissions of another (e.g. N<sub>2</sub>O), or increase demand for crops from tropical ex-forest land. Thus mitigation actions should address all three gases together.

Chiri *et al.* [118], studying termite mounds, have shown the efficacy of methanotrophy (methane consumption by aerobic methane-oxidizing bacteria) in locations where the air's methane content is intermediate (0–100 ppm) between the high amounts encountered by landfill soil methanotrophs and in cattle barns, and the low methane contents of air that is the substrate for forest soil methanotrophy. Termite mounds mitigate between 20% and 80% of their emissions [118]. The implication is that the use of bacterial methanotrophy to reduce methane emissions is feasible around landfills and farming facilities where intermediate methane contents are present in the air.

Methane mitigation is feasible everywhere, but particularly in cutting fossil fuel, landfill and crop waste emissions. China, India, Brazil, the USA, Australia and South Africa, all of which are large emitters from these sources, are all vulnerable to climate change. Mitigation of anthropogenic CH<sub>4</sub> emissions can potentially offset CO<sub>2</sub> emissions around 200 Gt of carbon [119]. By 2050, Höglund-Isaksson *et al.* [120] consider it technically feasible to reduce emissions by 40% compared to 2015 amounts, but expect rather less in practical terms. However, note that this pessimistic analysis was based on socio-economic modelling, not on analysis of likely scientific and technical developments: the likely future of a model world without true innovation [121,122].

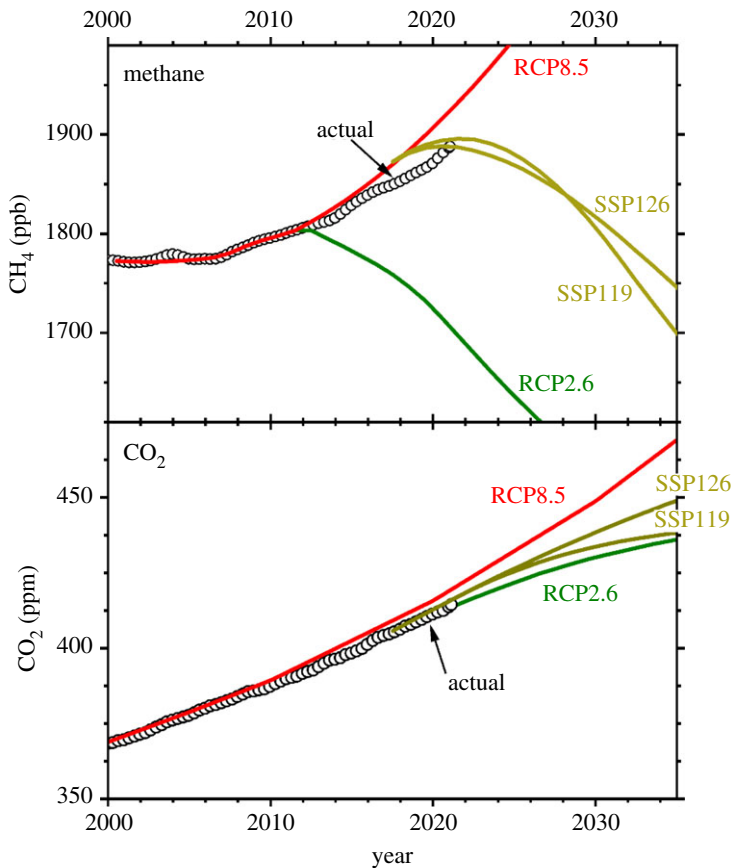
## 8. Policies for methane mitigation

To attain Net Zero by 2050, reducing atmospheric methane to pathways envisaged in scenarios compliant with the UNFCCC Paris Agreement (figure 6) will have rapid impact on climate warming [125]. By contrast to CO<sub>2</sub>, for which a proportion of emissions remains in the air for centuries, the lifetime of methane is between 9 and 10 years [50,126]. The instantaneous lifetime rates vary strongly with latitude, from less than 2.5 years in the tropics to greater than 20 years in the high latitudes [4]. The so-called 'perturbation lifetime'—the time it takes in a theoretical model atmosphere for a methane input to decay, is about 12.4 years [12], which is also relevant to mitigation discussions [127].

The recent UNEP CCAC [1] report demonstrates the very significant cost-benefit advantages to cutting methane as part of a wider programme to phase out greenhouse warming due to fossil fuels. To address climate warming globally, the reduction of methane emissions is a key mitigation strategy and must play a major role if a 1.5°C temperature stabilization trajectory is to be achieved [113,128].

Thus methane mitigation is a necessary complement to CO<sub>2</sub> reduction; but this will need determined international action. But thus far the outcome has not been good (figure 6), even for the simpler and cheaper actions, for example to end gasfield emissions [98]. As a general point, over-long commitment to sunk investment in fossil fuels is likely to be value-destroying as assets such as coal mines and power stations become stranded.

The UK Climate Change Committee's Sixth Carbon Budget [129] advises the UK government on pathways to progress to Net Zero climate warming emissions. The report lists a wide range of suggested measures towards a new economy. There is much scope for improving monitoring systems, which are important during the transition to Net Zero, to detect and prevent methane leaks from the gas network. Many policy debates can be expected, with many competing invested



**Figure 6.** Top panel shows the evolution of methane's mean global atmospheric mixing ratio (green open circles) compared to Representative Concentration Pathways RCP2.6 and RCP8.5 [123] and shared socio-economic pathways (SSP) from [124]. RCP2.6 scenario, which is consistent with the Paris Agreement, peaks in 2012, whereas SSPs peak in the early 2020s, and RCP 8.5 (dotted) continues to rise throughout the twenty-first century. Lower panel shows similar evolution scenarios for CO<sub>2</sub>. Radiative forcing used here is from Etminan *et al.* [11] and the figure is updated from that in [4] using NOAA/GML mole fraction data to January 2021. M. Manning. (Online version in colour.)

stakeholders, as well as the social and cultural significance in current forms of land-use and agriculture. There are no easy answers.

The whole cycle quantification of climate warming impacts is necessary but not simple and will demand international collaboration. Helpfully, reducing CO<sub>2</sub> emissions also widely reduces methane emissions from fuels that emit CH<sub>4</sub> during extraction and distribution. However, food is a more complex challenge. Is it better to cut meat consumption in industrial countries at the price of increasing imports of crops from ex-forest in the tropics? Pasture-sourced food is central to human nutrition in Africa and India. There is not necessarily a net climate forcing advantage in terminating aerobic pasture-fed ruminant products from grazing low-quality land, and replacing the food supply with intensively farmed crops from expanded arable land. The debate is open and the ongoing discussion may test priorities and value systems. Cutting methane brings short-term gain.

In particular, there is much opportunity for methane mitigation in developing countries [130]. Tropical nations themselves are among the nations most vulnerable to climate change and methane-linked air pollution is widespread in the very large new tropical megacities. By contrast to the task of restraining CO<sub>2</sub> emissions, developing nations share responsibility for



addressing the methane budget as they are major emitters and should thus be major contributors to reduction efforts, for example in landfill management [93]. Through technology transfer and capacity-building, aid could be focused on methane mitigation [131]. But methane mitigation is not difficult or expensive: the primary responsibility for mitigation is for these nations themselves.

Anthropogenic emissions of atmospheric methane also have major implications for human health, as emphasized by the recent UN Environment Programme Report [1]. In addition to weather-related impacts on human health (e.g. from heatwaves, droughts, storms, floods and the related spread of vector- and water-borne diseases), high methane mole fractions over polluted heavily populated regions lead to the production of ozone, with consequent increases in respiratory morbidity and mortality for humans, and wide impacts on plant life. Mitigating methane emissions thus correspondingly also reduces these impacts on human and plant health.

Thus methane's shorter lifetime and stronger short-term radiative impact than CO<sub>2</sub> both favour a policy of acting quickly on methane while simultaneously driving the larger, longer-term economic shifts necessary to cut CO<sub>2</sub> emissions, the essential task of mitigating climate warming. Moreover, cutting methane emissions has very strong public health benefits also, because of methane's role in ozone formation in air pollution [1]. But currently, the evolution of the atmospheric methane burden is far from the hopes of the Paris Agreement. Figure 6 compares scenario pathway RCP 2.6, which was consistent with the Paris goals, with current hopes and the actual record.

## 9. Nitrous oxide (N<sub>2</sub>O)

Nitrous oxide is badly neglected but important, responsible for about 0.2 W m<sup>-2</sup> of radiative forcing relative to 1750 [12,132] with strong recent increases in forcing. The current atmospheric N<sub>2</sub>O value, above 330 ppb, is sharply higher than the 270 ppb values typical of the years 1000–1800 CE [133] and the atmospheric lifetime is over a century with the global loss rate in the early years of this century about 13 Tg yr<sup>-1</sup> [134]. Griffis *et al.* [135] pointed to large inter-annual variability in emissions, and the sensitivity of emissions to climate. They suggested emissions will increase substantially with climate warming, in a major challenge to the UN Paris Agreement.

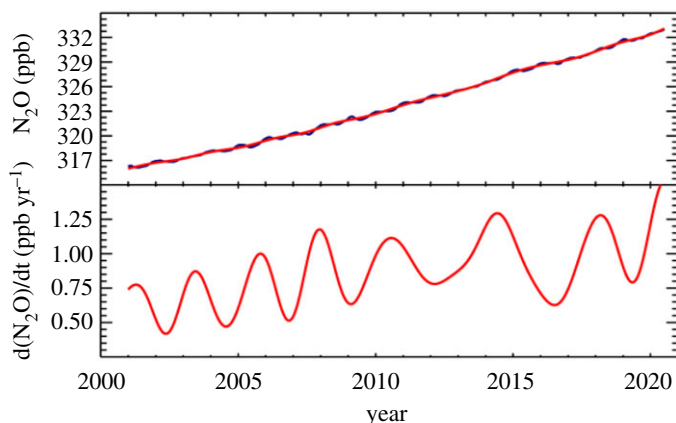
Growth in atmospheric N<sub>2</sub>O has been sustained and the annual increment is increasing (figure 7). Between 2007 and 2016, global N<sub>2</sub>O emissions were about 17 Tg of nitrogen per year [136]. Although top-down inversions are poorly constrained, especially in Africa, Southeast Asia and southern South America [136] it is likely that N<sub>2</sub>O emissions are growing rapidly, especially in Brazil, China and India, and there is risk of N<sub>2</sub>O–climate feedback [135,136], with warming helping drive emissions. Anthropogenic or human-influenced emissions were over 7 Tg annually, much of which is from the use of nitrogen fertilizer in croplands, with oxidation of ammonia [136,137].

Mitigation of urban emissions is feasible, for example for emissions from wastewater [138], especially from industrial sources (e.g. leaks from nylon manufacture in newly industrialized countries). However, although it may be possible to reduce emissions from wastewater [138] the feasibility of the task may be limited by the cost in energy and effort [139]. A minor source, that may be amenable to control either by taxation or regulation, is from whipped cream chargers and their misuse in small steel cylinders for so-called legal highs. The absence of regulation on these uses imply to the public that N<sub>2</sub>O emissions are unimportant: trivializing the climate implications. Note, however, that nitrous oxide is also a valuable anaesthetic gas, for which purpose its use should be protected.

Mitigation of N<sub>2</sub>O emissions in agriculture [140] is possible. Increased fertilizer use efficiency and reduced N<sub>2</sub>O emissions from agricultural soils could both be achieved by better fertilization strategies [137]. N<sub>2</sub>O production by nitrifier denitrification is promoted in settings low in oxygen, under fluctuating aerobic–anaerobic conditions [141]. Reduction in nitrous oxide emissions is feasible, for example by changing manure spraying and managing soil oxidation levels [142].

However, the task of changing agricultural emissions is complex and may have unexpected knock-on impacts. For example, in India growing rice with intermittent flooding rather than





**Figure 7.** Globally averaged  $\text{N}_2\text{O}$ , 2001–present. Note sustained growth at increasing rates. NOAA data; E. Dlugokencky. (Online version in colour.)

under continuous flooding might reduce methane emissions but Kritee *et al.* [143] suggested that  $\text{N}_2\text{O}$  emissions from rice across the Indian subcontinent might be 30–45 times higher if rice were grown this way. Such complexities need to be taken into account when discussing increasing crop production to replace of foods derived from methane-generating ruminants (though note that ‘industrial’ ruminant farming also depends heavily on nitrogen fertilizers for fodder and grass).

Replacing fossil fuels with biofuels can lead to an increase in  $\text{N}_2\text{O}$  sources unless there is also a move away from using ‘first generation’ biofuels such as rapeseed and maize [144]. Biological removal of nitrous oxide from the air, for example around manure slurry, may also be feasible, using one of the three enzymes capable of reducing nitrous oxide: namely nitrogenase; multicopper oxidase and nitrous oxide reductase [145].

To summarize, currently, there is little research and little action on  $\text{N}_2\text{O}$ . This is a serious gap in global policy.  $\text{N}_2\text{O}$  is dangerously neglected despite its important and rising contribution to climate forcing.

## 10. Challenges

Much about methane and nitrous oxide remains unknown.

The knowledge gap between the top-down and bottom-up methane budgets [29] needs urgent resolution. This gap challenges the veracity of the inventories painstakingly collected by the UN Framework Convention on Climate Change.

In determining methane emissions, there are three major sources of information: in addition to measurement of methane, careful geographically spread time-series monitoring of methane’s C-isotopes and H-isotopes will help identify and locate sources. Mole fraction alone is not enough: to distinguish between, for example, methane from gasfields and methane from cattle where sources are co-located, for example in Texas, isotopes are needed.

Currently, the NOAA Global Greenhouse Gas Reference Network (GGGRN) measures  $\text{CH}_4$  abundance at about 100 sites, but there are few in the tropics. Other nations like South Africa help, but coverage is inadequate and budgets slim. This absence of measurement places significant limitations on the accuracy and value of global modelling. There are no long-term high-quality greenhouse gas time series from moist interior Africa and South America, and very few in moist tropical Asia.  $\delta^{13}\text{C}_{\text{CH}_4}$  time series are maintained at a 22-member subset of sites, but methane isotopes in the tropics are only available from the US Pacific island sites and Ascension Is. in the Atlantic. Currently, this thin data stream is not enough to constrain a fully useful solution to the top-down versus bottom-up problem. If the global budget is to be solved, a bigger dataset is likely to be needed, especially with isotopic time series for  $\delta^2\text{H}_{\text{CH}_4}$  as well as  $\delta^{13}\text{C}_{\text{CH}_4}$ , and also

with more inland sites in the tropics. It should be noted that though  $\delta^2\text{H}_{\text{CH}_4}$  measurement in the GGGRN stalled due to analytical setbacks, it is hoped it will soon restart.

Isotopes can be used to place powerful constraints on inputs from different sources, such as fossil fuels, fires, wetlands and agriculture into global methane budgets. But to do this, the isotopic source signatures of major emissions need to be known. For fossil fuels, while gasfield methane has been widely measured for  $\delta^{13}\text{C}_{\text{CH}_4}$ , and to a lesser extent for  $\delta^2\text{H}_{\text{CH}_4}$ , the isotopic source signatures of methane from tropical sources have rarely been measured. There are very few determinations of  $\delta^{13}\text{C}_{\text{CH}_4}$ , and  $\delta^2\text{H}_{\text{CH}_4}$  for methane from annual tropical (C4) grass fires. Some tropical wetlands have been studied for their methane isotopic source signatures, but mainly from chambers on the water surface, missing methane that is channelled up stems of tall grasses like papyrus, or up trees. Similarly, methane from tropical cattle has rarely been measured isotopically in the pasture.

In particular, emissions from wetlands and ruminants are difficult to differentiate as they often have very similar isotopic signatures, because both come from anaerobic methanogenesis. Where both sources are closely juxtaposed, clues come from geography—where the emissions come from, inferred by back-trajectories, and carbon inputs (e.g. proportions of isotopically  $^{13}\text{C}$  richer C4 plants like maize or papyrus, or  $^{12}\text{C}$  richer C3 trees or other grasses).

To determine regional isotopic source signatures for methane from regional-scale tropical sources, low flying aircraft campaigns are needed, to collect air in the boundary layer. With such data, it should become possible to use isotopic and geographical information jointly to address the *natural* versus *anthropogenic* debate, and the allied problem of *cows* versus *wetlands*. However, in many cases this is not possible—many tropical wetlands also have high populations of cattle.

Methane also has poorly quantified other sources where placeholder flux guesses from the 1980s still maintain footholds in computer models of atmospheric chemistry and transport. Examples include fluxes from termites (but see [118]); from geological sources (but see [5]); from shelf seas, especially the Arctic, and from the open ocean (but see [146,147]). Also, soil sinks need further study (but see [43]). Some of these orphan placeholders are being replaced with results from more recent studies (e.g. see [29]).

Removal of methane from the atmosphere is feasible and in certain circumstances worthwhile, even though the lifetime of methane is much shorter than  $\text{CO}_2$ . This topic is discussed elsewhere in this volume.

For  $\text{N}_2\text{O}$ , the problems go deeper. Methane is the Cinderella gas, neglected compared to  $\text{CO}_2$ . But nitrous oxide has had even less attention. Cutting  $\text{N}_2\text{O}$  emission would make a major contribution to mitigating long-term climate warming. Yet discussion of this important gas is almost absent from the political debate.

## 11. Conclusion and outlook

Methane's rise is important and challenging. We still do not understand it, and yet we need to in order to achieve our climate goals. The feedback cycles of methane and its incremental impacts can complicate efforts to slow climate warming. The major needs are for improved *in situ* measurement, including  $\delta^2\text{H}_{\text{CH}_4}$ , the third leg of the information tripod; for better resolution of bottom-up and top-down budgets; for improved understanding of the spatial and temporal patterns of  $\text{CH}_4$  sinks, including how they are changing with time; and for much better measurement and understanding of tropical budgets.

The UNEP CCAC [1] report clearly demonstrated that reducing the global methane burden is one of the most effective strategies to limit global climate warming and to meet the goals of the UN Paris Agreement, as well as to improve health. Hopes are high [122] but practical reality to date is disappointing (figure 6). Targeted methane mitigations are realistically capable of cutting annual methane emissions by 180 Tg, or 45% of anthropogenic inputs. Not only would this greatly help the task of meeting the warming goals of the Paris Agreement, but the ancillary impacts on air quality would bring major benefits for human health and crop production [1].

Though methane's rise challenges us, methane also offers hope [95]. The opportunities for cost-effective mitigation are large and many ways of cutting emissions can be addressed immediately and inexpensively. Carbon accounting for methane should be full cycle—thus biogas generators should include leak assessment, reductions in ruminant farming should include impacts of replacement foods. In the longer term, it is not unrealistic to hope to bring the global atmospheric methane burden down towards its pre-industrial equilibrium. Cutting methane is arguably the most powerful immediate intervention needed in meeting the Paris Agreement target.

As for N<sub>2</sub>O, the policy has failed. There is minimal attention.

**Data accessibility.** No primary data are reported.

**Authors' contributions.** E.G.N. conceived of and designed the review, and drafted the manuscript, with significant inputs from E.J.D., S.E.M., M.R.M. and N.J.W. E.J.D. and M.R.M. assessed the methane record. E.J.D. provided figures 12–3 and 7. S.E.M. provided figures 4 and 5. M.R.M. provided figure 6. N.J.W. provided table 1. R.E.F., J.L.F. and D.L. provided insight into global and tropical methane. All authors read and improved the manuscript. Particular thanks to Patrick Crill and Paul Palmer for generous and helpful criticism.

**Competing interests.** The authors declare that they have no competing interests.

**Funding.** E.G.N. thanks the UK Natural Environment Research Council for grant no. NE/S00159X/1 ZWAMPS Quantifying Methane Emissions in remote tropical settings: a new 3D approach. NE/N016238/1 MOYA The Global Methane Budget 2016–2020, NE/P019641/1 New methodologies for removal of methane, NE/S004211/1 DARE-UK Detection and Attribution of Regional greenhouse gas Emissions in the UK, NE/R01809X1/1 EQUIP4Risk Evaluation of shale gas risk.

## References

1. UNEP CCAC. 2021 *United nations environment programme and climate and clean air coalition. Global methane assessment: benefits and costs of mitigating methane emissions*. Nairobi, Kenya: United Nations Environment Programme. See <https://www.ccacoalition.org/en/resources/global-methane-assessment-full-report>.
2. Ganesan AL *et al.* 2019 Advancing scientific understanding of the global methane budget in support of the Paris Agreement. *Glob. Biogeochem. Cycles* **33**, 1475–1512. (doi:10.1029/2018GB006065)
3. Schaefer H. 2019 On the causes and consequences of recent trends in atmospheric methane. *Curr. Climate Change Rep.* **5**, 259–274. (doi:10.1007/s40641-019-00140-z)
4. Nisbet EG *et al.* 2019 Very strong atmospheric methane growth in the four years 2014–2017: implications for the Paris Agreement. *Glob. Biogeochem. Cycles* **33**, 318–342. (doi:10.1029/2018GB006009)
5. Hmiel B *et al.* 2020 Preindustrial 14 CH<sub>4</sub> indicates greater anthropogenic fossil CH<sub>4</sub> emissions. *Nature* **578**, 409–412. (doi:10.1038/s41586-020-1991-8)
6. Schwietzke S *et al.* 2016 Upward revision of global fossil fuel methane emissions based on isotope database. *Nature* **538**, 88–91. (doi:10.1038/nature19797)
7. Naus S, Montzka SA, Pandey S, Basu S, Dlugokencky EJ, Krol M. 2019 Constraints and biases in a tropospheric two-box model of OH. *Atmos. Chem. Phys.* **19**, 407–424. (doi:10.5194/acp-19-407-2019)
8. Zhao Y *et al.* 2020 Influences of hydroxyl radicals (OH) on top-down estimates of the global and regional methane budgets. *Atmos. Chem. Phys.* **20**, 9525–9546. (doi:10.5194/acp-20-9525-2020)
9. Thornhill GD *et al.* 2021 Effective radiative forcing from emissions of reactive gases and aerosols – a multi-model comparison. *Atmos. Chem. Phys.* **21**, 853–874. (doi:10.5194/acp-21-853-2021)
10. Thornhill GD *et al.* 2021 Effective radiative forcing from emissions of reactive gases and aerosols—a multimodel comparison. *Atmos. Chem. Phys.* **21**, 853–857. (doi:10.5194/acp-21-853-2021)
11. Etminan M, Myhre G, Highwood EJ, Shine KP. 2016 Radiative forcing of carbon dioxide, methane and nitrous oxide: a significant revision of the methane radiative forcing. *Geophys. Res. Lett.* **43**, 12 614–12 623. (doi:10.1002/2016GL071930)
12. Myhre G *et al.* 2013 Anthropogenic and natural radiative forcing. In *Climate change 2013: the physical science basis. Contribution of working group I to the fifth assessment report of the*

- intergovernmental panel on climate change* (eds TF Stocker *et al.*). Cambridge, UK: Cambridge University Press.
13. O'Connor FM *et al.* 2021 Assessment of pre-industrial to present-day anthropogenic climate forcing in UKESM1. *Atmos. Chem. Phys.* **21**, 1211–1243. (doi:10.5194/acp-21-1211-2021)
  14. NOAA AGGI 2021 NOAA annual greenhouse gas index, Table 2. <https://www.esrl.noaa.gov/gmd/aggi/aggi.html>.
  15. Dlugokencky EJ, Michel SE, Crotwell M, Crotwell AM, Neff D, Petron G. 2019 NOAA's cooperative global air sampling network: constraining LLGHG budgets for more than 50 years. In *AGU Fall Meeting Abstracts*, Vol. 2019, pp. A33D-04. Washington, DC: AGU.
  16. Shaw *et al.* Submitted. Globally significant methane emissions observed from tropical wetlands in Zambia. *Nat. Commun.*
  17. Thornton BF, Prytherch J, Andersson K, Brooks IM, Salisbury D, Tjernström M, Crill PM. 2020 Shipborne eddy covariance observations of methane fluxes constrain Arctic sea emissions. *Sci. Adv.* **6**, eaay7934. (doi:10.1126/sciadv.aay7934)
  18. Pandey S *et al.* 2019 Satellite observations reveal extreme methane leakage from a natural gas well blowout. *Proc. Natl Acad. Sci. USA* **116**, 26 376–26 381. (doi:10.1073/pnas.1908712116)
  19. Pandey S *et al.* 2019 Influence of atmospheric transport on estimates of variability in the global methane burden. *Geophys. Res. Lett.* **46**, 2302–2311. (doi:10.1029/2018GL081092)
  20. Lunt MF, Palmer PI, Feng L, Taylor CM, Boesch H, Parker RJ. 2019 An increase in methane emissions from tropical Africa between 2010 and 2016 inferred from satellite data. *Atmos. Chem. Phys. Discuss.* **19**, 14 721–14 740. (doi:10.5194/acp-19-14721-2019)
  21. Kivimäki E *et al.* 2019 Evaluation and analysis of the seasonal cycle and variability of the trend from GOSAT methane retrievals. *Remote Sens.* **11**, 882. (doi:10.3390/rs11070882)
  22. De Gouw JA, Veefkind JP, Roosenbrand E, Dix B, Lin JC, Landgraf J, Levelt PF. 2020 Daily satellite observations of methane from oil and gas production regions in the United States. *Sci. Rep.* **10**, 1–10. (doi:10.1038/s41598-020-57678-4)
  23. Tunnicliffe RL *et al.* 2020 Quantifying sources of Brazil's CH<sub>4</sub> emissions between 2010 and 2018 from satellite data. *Atmos. Chem. Phys.* **20**, 13 041–13 067. (doi:10.5194/acp-20-13041-2020)
  24. Zeng ZC, Byrne B, Gong F-Y, He Z, Lei L. 2021 Correlation between paddy rice growth and satellite-observed methane column abundance does not imply causation. *Nat. Commun.* **2**, 1–4. (doi:10.1038/s41467-021-21434-7)
  25. Baumgartner M, Schilt A, Eicher O, Schmitt J, Schwander J, Spahni R, Fischer H, Stocker TF. 2012 High-resolution inter-polar difference of atmospheric methane around the Last Glacial Maximum. *Biogeosciences* **9**, 3961–3977. (doi:10.5194/bg-9-3961-2012)
  26. Nisbet EG, Weiss R. 2010 Top-down vs. bottom-up. *Science* **328**, 1241–1243. (doi:10.1126/science.1189936)
  27. Wang F *et al.* 2019 Methane emission estimates by the global high-resolution inverse model using national inventories. *Remote Sens.* **11**, 2489. (doi:10.3390/rs11212489)
  28. Wang X *et al.* 2019 The role of chlorine in global tropospheric chemistry. *Atmos. Chem. Phys.* **19**, 3981–4003. (doi:10.5194/acp-19-3981-2019)
  29. Saunio M *et al.* 2020 The global methane budget 2000–2017. *Earth Syst. Sci. Data* **12**, 1561–1623. (doi:10.5194/essd-12-1561-2020)
  30. Rosentreter JA *et al.* 2021 Half of global methane emissions come from highly variable aquatic ecosystem sources. *Nat. Geosci.* **14**, 225–230. (doi:10.1038/s41561-021-00715-2)
  31. Dean JF *et al.* 2018 Methane feedbacks to the global climate system in a warmer world. *Rev. Geophys.* **56**, 207–250. (doi:10.1002/2017RG000559)
  32. Fujita R, Morimoto S, Maksyutov S, Kim HS, Arshinov M, Brailsford G, Aoki S, Nakazawa T. 2020 Global and regional CH<sub>4</sub> emissions for 1995–2013 derived from atmospheric CH<sub>4</sub>,  $\delta^{13}\text{C-CH}_4$ , and  $\delta\text{D-CH}_4$  observations and a chemical transport model. *J. Geophys. Res. Atmos.* **125**, e2020JD032903. (doi:10.1029/2020JD032903)
  33. Gilbert M, Nicolas G, Cinardi G, Van Boeckel TP, Vanwambeke SO, Wint GRW, Robinson TP. 2018 Global distribution data for cattle, buffaloes, horses, sheep, goats, pigs, chickens and ducks in 2010. *Sci. Data* **5**, 180227. (doi:10.1038/sdata.2018.227)
  34. Chang J, Peng S, Ciais P, Saunio M, Dungal SRS, Herrero M, Havlík P, Tian H, Bousquet P. 2019 Revisiting enteric methane emissions from domestic ruminants and their  $\delta^{13}\text{C}_{\text{CH}_4}$  source signature. *Nat. Commun.* **10**, 1–14. (doi:10.1038/s41467-019-11066-3)

35. Schaefer H *et al.* 2016 A 21st century shift from fossil-fuel to biogenic methane emissions indicated by  $^{13}\text{CH}_4$ . *Science* **352**, 80–84. (doi:10.1126/science.aad2705)
36. Gedney N, Huntingford C, Comyn-Platt E, Wiltshire A. 2019 Significant feedbacks of wetland methane release on climate change and the causes of their uncertainty. *Environ. Res. Lett.* **14**, 084027. (doi:10.1088/1748-9326/ab2726)
37. Heslop JK, Walter Anthony KM, Winkel M, Sepulveda-Jauregui A, Martinez-Cruz K, Bondurant A, Grosse G, Liebner S. 2020 A synthesis of methane dynamics in thermokarst lake environments. *Earth Sci. Rev.* **210** 103365. (doi:10.1016/j.earscirev.2020.103365)
38. Marais EA, Wiedinmyer C. 2016 Air quality impact of diffuse and inefficient combustion emissions in Africa (DICE-Africa). *Environ. Sci. Technol.* **50**, 10739–10745. (doi:10.1021/acs.est.6b02602)
39. Lan X *et al.* 2019 Long-term measurements show little evidence for large increases in total US methane emissions over the past decade. *Geophys. Res. Lett.* **46**, 4991–4999. (doi:10.1029/2018GL081731)
40. Milkov AV, Schwietzke S, Allen G, Sherwood OA, Etiope G. 2020 Using global isotopic data to constrain the role of shale gas production in recent increases in atmospheric methane. *Sci. Rep.* **10**, 1–7. (doi:10.1038/s41598-020-61035-w)
41. Koffi EN, Bergamaschi P, Alkama R, Cescatti A. 2020 An observation-constrained assessment of the climate sensitivity and future trajectories of wetland methane emissions. *Sci. Adv.* **6**, eaay4444. (doi:10.1126/sciadv.aay4444)
42. Berchet A *et al.* 2020 Using ship-borne observations of methane isotopic ratio in the Arctic Ocean to understand methane sources in the Arctic. *Atmos. Chem. Phys.* **20**, 3987–3998. (doi:10.5194/acp-20-3987-2020)
43. Oh Y *et al.* 2020 Reduced net methane emissions due to microbial methane oxidation in a warmer Arctic. *Nat. Clim. Change* **10**, 317–321. (doi:10.1038/s41558-020-0734-z)
44. Weber T, Wiseman NA, Kock A. 2019 Global ocean methane emissions dominated by shallow coastal waters. *Nat. Commun.* **10**, 1–10. (doi:10.1038/s41467-019-12541-7)
45. Zhang Z *et al.* 2020 Influences of hydroxyl radicals (OH) on top-down estimates of the global and regional methane budgets. *Atmos. Chem. Phys.* **20**, 9525–9546. (doi:10.5194/acp-20-9525-2020)
46. Lan X *et al.* 2021 Improved constraints on global methane emissions and sinks using  $\delta^{13}\text{C}-\text{CH}_4$ . *Glob. Biogeochem. Cycles* **35**, p.e2021GB007000. (doi:10.1029/2021GB007000)
47. Nicely JM *et al.* 2020 A machine learning examination of hydroxyl radical differences among model simulations for CCM1-1. *Atmos. Chem. Phys.* **20**, 1341–1361. (doi:10.5194/acp-20-1341-2020)
48. Wolfe GM *et al.* 2019 Mapping hydroxyl variability throughout the global remote troposphere via synthesis of airborne and satellite formaldehyde observations. *Proc. Natl Acad. Sci. USA* **116**, 11 171–11 180. (doi:10.1073/pnas.1821661116)
49. Zhao Y *et al.* 2019 Inter-model comparison of global hydroxyl radical (OH) distributions and their impact on atmospheric methane over the 2000–2016 period. *Atmos. Chem. Phys.* **19**, 13 701–13 723. (doi:10.5194/acp-19-13701-2019)
50. Stevenson DS *et al.* 2020 Trends in global tropospheric hydroxyl radical and methane lifetime since 1850 from AerChemMIP. *Atmos. Chem. Phys.* **20**, 12 905–12 920. (doi:10.5194/acp-20-12905-2020)
51. Hossaini R, Chipperfield MP, Saiz-Lopez A, Fernandez R, Monks S, Feng W, Brauer P, Von Glasow R. 2016 A global model of tropospheric chlorine chemistry: organic versus inorganic sources and impact on methane oxidation. *J. Geophys. Res. Atmos.* **121**, 14 271–14 297. (doi:10.1002/2016JD025756)
52. Strode SA, Wang JS, Manyin M, Duncan B, Hossaini R, Keller CA, Michel SE, White JWC. 2020 Strong sensitivity of the isotopic composition of methane to the plausible range of tropospheric chlorine. *Atmos. Chem. Phys.* **20**, 8405–8419. (doi:10.5194/acp-20-8405-2020)
53. Tveit AT *et al.* 2019 Widespread soil bacterium that oxidizes atmospheric methane. *Proc. Natl Acad. Sci. USA* **116**, 8515–8524. (doi:10.1073/pnas.1817812116)
54. Jackson RB *et al.* 2020 Increasing anthropogenic methane emissions arise equally from agricultural and fossil fuel sources. *Environ. Res. Lett.* **15**, 071002. (doi:10.1088/1748-9326/ab9ed2)



55. Chandra N *et al.* 2021 Emissions from the oil and gas sectors, coal mining and ruminant farming drive methane growth over the past three decades. *J. Meteorol. Soc. Jpn. Ser. II.* **99**, 309–337. (doi:10.2151/jmsj.2021-015)
56. Zhu Y, Purdy KJ, Eyice Ö, Shen L, Harpenslager SF, Yvon-Durocher G, Dumbrell AJ, Trimmer M. 2020 Disproportionate increase in freshwater methane emissions induced by experimental warming. *Nat. Clim. Change* **10**, 685–690. (doi:10.1038/s41558-020-0824-y)
57. Stolper DA, Lawson M, Formolo MJ, Davis CL, Douglas PMJ, Eiler JM. 2018 The utility of methane clumped isotopes to constrain the origins of methane in natural gas accumulations. *Geol. Soc. Lond. Spec. Publ.* **468**, 23–52. (doi:10.1144/SP468.3)
58. Dlugokencky EJ, Nisbet EG, Fisher R, Lowry D. 2011 Global atmospheric methane: budget, changes and dangers. *Phil. Trans. R. Soc. A* **369**, 2058–2072. (doi:10.1098/rsta.2010.0341)
59. McNorton J, Wilson C, Gloor M, Parker RJ, Boesch H, Feng W, Hossaini R, Chipperfield MP. 2018 Attribution of recent increases in atmospheric methane through 3-D inverse modelling. *Atmos. Chem. Phys.* **18**, 18 149–18 168. (doi:10.5194/acp-18-18149-2018)
60. Maasackers JD *et al.* 2019 Global distribution of methane emissions, emission trends, and OH concentrations and trends inferred from an inversion of GOSAT satellite data for 2010–2015. *Atmos. Chem. Phys.* **19**, 11. (doi:10.5194/acp-19-7859-2019)
61. He J, Naik V, Horowitz LW, Dlugokencky E, Thoning K. 2020 Investigation of the global methane budget over 1980–2017 using GFDL-AM4. 1. *Atmos. Chem. Phys.* **20**, 805–827. (doi:10.5194/acp-20-805-2020)
62. Nisbet EG *et al.* 2016 Rising atmospheric methane: 2007–2014 growth and isotopic shift. *Glob. Biogeochem. Cycles* **30**, 1356–1370. (doi:10.1002/2016GB005406)
63. Warwick NJ *et al.* 2016 Using  $\delta^{13}\text{C-CH}_4$  and  $\delta\text{D-CH}_4$  to constrain Arctic methane emissions. *Atmos. Chem. Phys.* **16**, 14 891–14 908. (doi:10.5194/acp-16-14891-2016)
64. Sherwood OA, Schwietzke S, Arling VA, Etiope G. 2017 Global inventory of gas geochemistry data from fossil fuel, microbial and burning sources, version 2017. *Earth Syst. Sci. Data* **9**, 639–656. (doi:10.5194/essd-9-639-2017)
65. Saueressig G, Crowley JN, Bergamaschi P, Brühl C, Brenninkmeijer CAM, Fischer H. 2001 Carbon 13 and D kinetic isotope effects in the reactions of  $\text{CH}_4$  with  $\text{O}(^1\text{D})$  and OH: new laboratory measurements and their implications for the isotopic composition of stratospheric methane. *J. Geophys. Res.* **106**, 23 127–23 138. (doi:10.1029/2000JD000120)
66. Cantrell CA, Shetter RE, Mcdaniel AH, Calvert JG, Davidson JA, Lowe DC, Tyler SC, Cicerone RJ, Greenberg JP. 1990 Carbon kinetic isotope effect in the oxidation of methane by the hydroxyl radical. *J. Geophys. Res.* **95**, 22 455–22 462. (doi:10.1029/JD095iD13p22455)
67. Demore W. 1993 Rate constant ratio for the reactions of OH with  $\text{CH}_3\text{D}$  and  $\text{CH}_4$ . *J. Phys. Chem.* **97**, 8564–8566. (doi:10.1021/j100135a006)
68. Gierczak T, Talukdar RK, Herndon SC, Vaghjiani GL, Ravishankara AR. 1997 Rate coefficients for the reactions of hydroxyl radicals with methane and deuterated methanes. *J. Phys. Chem. A* **101**, 3125–3134. (doi:10.1021/jp963892r)
69. Joelsson LMT, Schmidt JA, Nilsson EJK, Blunier T, Griffith DWT, Ono S, Johnson MS. 2016 Kinetic isotope effects of  $^{12}\text{CH}_3\text{D}+\text{OH}$  and  $^{13}\text{CH}_3\text{D}+\text{OH}$  from 278 to 313 K. *Atmos. Chem. Phys.* **16**, 4439–4449. (doi:10.5194/acp-16-4439-2016)
70. King SL, Quay PD, Lansdown JM. 1989 The  $^{13}\text{C}/^{12}\text{C}$  kinetic isotope effect for soil oxidation of methane at ambient atmospheric concentrations. *J. Geophys. Res.* **94**, 18 273–18 277. (doi:10.1029/JD094iD15p18273)
71. Tyler SC, Crill PM, Brailsford GW. 1994  $^{13}\text{C}/^{12}\text{C}$  fractionation of methane during oxidation in a temperate forested soil. *Geochim. Cosmochim. Acta* **58**, 1625–1633. (doi:10.1016/0016-7037(94)90564-9)
72. Reeburgh WS, Hirsch AI, Sansone FJ, Popp BN, Rust TM. 1997 Carbon kinetic isotope effect accompanying microbial oxidation of methane in boreal forest soils. *Geochim. Cosmochim. Acta* **61**, 4761–4767. (doi:10.1016/S0016-7037(97)00277-9)
73. Snover AK, Quay PD, Hao WM. 2000 The D/H content of methane emitted from biomass burning. *Glob. Biogeochem. Cycles* **14**, 11–24. (doi:10.1029/1999GB900075)
74. Saueressig G, Bergamaschi P, Crowley JN, Fischer H, Harris GW. 1995 Carbon kinetic isotope effect in the reaction of  $\text{CH}_4$  with Cl atoms. *Geophys. Res. Lett.* **22**, 1225–1228. (doi:10.1029/95GL00881)



75. Crowley JN, Saueressig G, Bergamaschi P, Fischer H, Harris GW. 1999 Carbon kinetic isotope effect in the reaction  $\text{CH}_4 + \text{Cl}$ : a relative rate study using FTIR spectroscopy. *Chem. Phys. Lett.* **303**, 268–274. (doi:10.1016/S0009-2614(99)00243-2)
76. Saueressig G, Bergamaschi P, Crowley JN, Fischer H, Harris GW. 1996 D/H kinetic isotope effect in the reaction  $\text{CH}_4 + \text{Cl}$ . *Geophys. Res. Lett.* **23**, 3619–3622. (doi:10.1029/96GL03292)
77. Lassey KR, Etheridge DM, Lowe DC, Smith AM, Ferretti DF. 2007 Centennial evolution of the atmospheric methane budget: what do the carbon isotopes tell us? *Atmos. Chem. Phys.* **7**, 2119–2139. (doi:10.5194/acp-7-2119-2007)
78. Zazzeri G *et al.* 2016 Carbon isotopic signature of coal-derived methane emissions to atmosphere: from coalification to alteration. *Atmos. Chem. Phys.* **16**, 13 669–13 680. (doi:10.5194/acp-16-13669-2016)
79. Tans PP. 1997 A note on isotopic ratios and the global atmospheric methane budget. *Glob. Biogeochem. Cycles* **11**, 77–81. (doi:10.1029/96GB03940)
80. Ferretti DF *et al.* 2005 Unexpected changes to the global methane budget over the past 2000 years. *Science* **309**, 1714–1717. (doi:10.1126/science.1115193)
81. Dyonisius MN *et al.* 2020 Old carbon reservoirs were not important in the deglacial methane budget. *Science* **367**, 907–910. (doi:10.1126/science.aax0504)
82. Lassey KR, Lowe DC, Smith AM. 2007 The atmospheric cycling of radiomethane and the ‘fossil fraction’ of the methane source. *Atmos. Chem. Phys.* **7**, 2141–2149. (doi:10.5194/acp-7-2141-2007)
83. Garnett MH, Hardie SML, Murray C. 2020 Radiocarbon analysis reveals that vegetation facilitates the release of old methane in a temperate raised bog. *Biogeochemistry* **148**, 1–17. (doi:10.1007/s10533-020-00638-x)
84. Rigby M *et al.* 2017 Role of atmospheric oxidation in recent methane growth. *Proc. Natl Acad. Sci. USA* **114**, 5373–5377. (doi:10.1073/pnas.1616426114)
85. Umezawa T *et al.* 2018 Interlaboratory comparison of  $\delta^{13}\text{C}$  and  $\delta\text{D}$  measurements of atmospheric  $\text{CH}_4$  for combined use of data sets from different laboratories. *Atmos. Meas. Tech.* **11**, 1207–1231. (doi:10.5194/amt-11-1207-2018)
86. Sperlich P, Moossen H, Geilmann H, Bury SJ, Brown JCS, Moss RC, Brailsford GW, Brand WA. 2021 A robust method for direct calibration of isotope ratios in gases against liquid/solid reference materials, including a laboratory comparison for  $\delta^{13}\text{C}\text{-CH}_4$ . *Rapid Commun. Mass Spectrom.* **35**, e8944. (doi:10.1002/rcm.8944)
87. Chan E, Worthy DEJ, Chan D, Ishizawa M, Moran MD, Delcloc A, Vogel F. 2020 Eight-year estimates of methane emissions from oil and gas operations in Western Canada are nearly twice those reported in inventories. *Environ. Sci. Technol.* **54**, 14 899–14 909. (doi:10.1021/acs.est.0c04117)
88. Robertson AM, Edie R, Field RA, Lyon D, Mcvay R, Omara M, Zavala-Araiza D, Murphy SM. 2020 New Mexico Permian Basin measured well pad methane emissions are a factor of 5–9 times higher than US EPA estimates. *Environ. Sci. Technol.* **54**, 13 926–13 934. (doi:10.1021/acs.est.0c02927)
89. Janardanan R *et al.* 2020 Country-scale analysis of methane emissions with a high-resolution inverse model using Gosat and surface observations. *Remote Sens.* **12**, 375. (doi:10.3390/rs12030375)
90. Yacovitch TI, Daube C, Herndon SC. 2020 Methane emissions from offshore oil and gas platforms in the Gulf of Mexico. *Environ. Sci. Technol.* **54**, 3530–3538. (doi:10.1021/acs.est.9b07148)
91. Bergamaschi P *et al.* 2018 Inverse modelling of European  $\text{CH}_4$  emissions during 2006–2012 using different inverse models and reassessed atmospheric observations. *Atmos. Chem. Phys.* **18**, 901–920. (doi:10.5194/acp-18-901-2018)
92. Brownlow R *et al.* 2016 Methane mole fraction and  $\delta^{13}\text{C}$  above and below the Trade Wind Inversion at Ascension Island in air sampled by aerial robotics. *Geophys. Res. Lett.* **43**, 11 893–11 902. (doi:10.1002/2016GL071155)
93. Nisbet EG *et al.* 2020 Methane mitigation: methods to reduce emissions, on the path to the Paris Agreement. *Rev. Geophys.* **58**, e2019RG000675. (doi:10.1029/2019RG000675)
94. Lackner KS. 2020 Practical constraints on atmospheric methane removal. *Nat. Sustain.* **3**, 357–357. (doi:10.1038/s41893-020-0496-7)

95. Jackson RB, Solomon EI, Canadell JG, Cargnello M, Field CB. 2019 Methane removal and atmospheric restoration. *Nat. Sustain.* **2**, 436–438. (doi:10.1038/s41893-019-0299-x)
96. Abernethy S, O'Connor FM, Jones CD, Jackson RB. 2021 Methane removal and the proportional reductions in surface temperature and ozone. *Phil. Trans. R. Soc. A* **379**, 20210104. (doi:10.1098/rsta.2021.0104)
97. Jackson RB *et al.* 2021 Atmospheric methane removal: a research agenda. *Phil. Trans. R. Soc. A* **379**, 20200454. (doi:10.1098/rsta.2020.0454)
98. Lyon DR *et al.* 2021 Concurrent variation in oil and gas methane emissions and oil price during the COVID-19 pandemic. *Atmos. Chem. Phys.* **21**, 6605–6626. (doi:10.5194/acp-21-6605-2021)
99. Kang M, Mauzerall DL, Ma DZ, Celia MA. 2019 Reducing methane emissions from abandoned oil and gas wells: strategies and costs. *Energy Policy* **132**, 594–601. (doi:10.1016/j.enpol.2019.05.045)
100. France JL *et al.* 2021 Facility level measurement of offshore oil and gas installations from a medium-sized airborne platform: method development for quantification and source identification of methane emissions. *Atmos. Meas. Tech.* **14**, 71–88. (doi:10.5194/amt-14-71-2021)
101. Mielke-Maday I *et al.* 2019 Methane source attribution in a US dry gas basin using spatial patterns of ground and airborne ethane and methane measurements. *Elem. Sci. Anthr.* **7**, 13. (doi:10.1525/elementa.351)
102. Zhang Y *et al.* 2020 Quantifying methane emissions from the largest oil-producing basin in the United States from space. *Sci. Adv.* **6**, eaaz5120. (doi:10.1126/sciadv.aaz5120)
103. Scarpelli TR, Jacob DJ, Maasackers JD, Sulprizio MP, Sheng J-X, Rose K, Romeo L, Worden JR, Janssens-Maenhout G. 2020 A global gridded (0.1°×0.1°) inventory of methane emissions from oil, gas, and coal exploitation based on national reports to the United Nations Framework Convention on Climate Change. *Earth Syst. Sci. Data* **12**, 563–575. (doi:10.5194/essd-12-563-2020)
104. Shindell D, Smith CJ. 2019 Climate and air-quality benefits of a realistic phase-out of fossil fuels. *Nature* **573**, 408–411. (doi:10.1038/s41586-019-1554-z)
105. Warwick NJ, Bekki S, Nisbet EG, Pyle JA. 2004 Impact of a hydrogen economy on the stratosphere and troposphere studied in a 2-D model. *Geophys. Res. Lett.* **31**, (doi:10.1029/2003GL019224)
106. Chandra N *et al.* 2021 Emissions from the oil and gas sectors, coal mining and ruminant farming drive methane growth over the past three decades. *J. Meteorol. Soc. Jpn* **99**, 309–337. (doi:10.2151/jmsj.2021-015)
107. Webb J, De Silva HN, Wilson C. 2020 The future of coal and renewable power generation in Australia: a review of market trends. *Econ. Anal. Policy* **68**, 363–378. (doi:10.1016/j.eap.2020.10.003)
108. Shava S, Masuku S. 2019 Living currency: the multiple roles of livestock in livelihood sustenance and exchange in the context of rural indigenous communities in southern Africa. *South. Afr. J. Environ. Educ.* **35**, 1–13. (doi:10.4314/sajee.v35i1.16)
109. Bakkaloglu S, Lowry D, Fisher RE, France JL, Brunner D, Chen H, Nisbet EG. 2021 Quantification of methane emissions from UK biogas plants. *Waste Manag.* **124**, 82–93. (doi:10.1016/j.wasman.2021.01.011)
110. NAEI 2020. National Atmospheric Emissions Inventory in 2018 [website]. See <https://naei.beis.gov.uk/data/data-selector>. Accessed October 2020.
111. Parsaeifard N, Sattler M, Nasirian B, Chen VCP. 2020 Enhancing anaerobic oxidation of methane in municipal solid waste landfill cover soil. *Waste Manag.* **106**, 44–54. (doi:10.1016/j.wasman.2020.03.009)
112. Choudhary A, Kumar A, Kumar S. 2020 National municipal solid waste energy and global warming potential inventory: India. *J. Hazard. Toxic Radioact. Waste* **24**, 06020002. (doi:10.1061/(ASCE)HZ.2153-5515.0000521)
113. Harmsen M *et al.* 2019 The role of methane in future climate strategies: mitigation potentials and climate impacts. *Clim. Change* **163**, 1–17. (doi:10.1007/s10584-019-02437-2)
114. Alemneh T, Getabalew M. 2019 Strategies to reduce methane emission in ruminants. *Int. J. Ecol. Ecosolution* **6**, 16–22.

115. Kumari S, Fagodiya RK, Hiloidhari M, Dahiya RP, Kumar A. 2020 Methane production and estimation from livestock husbandry: a mechanistic understanding and emerging mitigation options. *Sci. Total Environ.* **709**, 136135. (doi:10.1016/j.scitotenv.2019.136135)
116. Ku-Vera JC *et al.* 2020 Strategies for enteric methane mitigation in cattle fed tropical forages. *Animal* **14**, S3, s453–s463. (doi:10.1017/S1751731120001780)
117. Smith P, Reay D, Smith J. 2021 Agricultural methane emissions and the potential for mitigation. *Phil. Trans. R. Soc. A* **379**, 20200451. (doi:10.1098/rsta.2020.0451)
118. Chiri E, Greening C, Lappan R, Waite DW, Jirapanjawan T, Dong X, Arndt SK, Nauer PA. 2020 Termite mounds contain soil-derived methanotroph communities kinetically adapted to elevated methane concentrations. *ISME J.* **14**, 2715–2731. (doi:10.1038/s41396-020-0722-3)
119. Hayman GD *et al.* 2020 Regional variation in the effectiveness of methane-based and land-based climate mitigation options. *Earth Syst. Dyn. Discuss.* **12**, 513–544. (doi:10.5194/esd-12-513-2021)
120. Höglund-Isaksson L, Gómez-Sanabria A, Klimont Z, Rafaj P, Schöpp W. 2020 Technical potentials and costs for reducing global anthropogenic methane emissions in the 2050 timeframe—results from the GAINS model. *Environ. Res. Commun.* **2**, 025004. (doi:10.1088/2515-7620/ab7457)
121. IEA 2021a. *Methane tracker 2021*, Paris, France: International Energy Agency. See <https://www.iea.org/reports/methane-tracker-2021>.
122. IEA 2021b. *Net zero by 2050*, Paris, France: IEA. See <https://www.iea.org/reports/net-zero-by-2050>.
123. Collins WJ *et al.* 2018 Increased importance of methane reduction for a 1.5 degree target. *Environ. Res. Lett.* **13**, p.054003.
124. Meinshausen M *et al.* 2020 The shared socio-economic pathway (SSP) greenhouse gas concentrations and their extensions to 2500. *Geosci. Model Dev.* **13**, 3571–3605. (doi:10.5194/gmd-13-3571-2020)
125. Rogelj J, Huppmann D, Krey V, Riahi K, Clarke L, Gidden M, Nicholls Z, Meinshausen M. 2019 A new scenario logic for the Paris Agreement long-term temperature goal. *Nature* **573**, 357–363. (doi:10.1038/s41586-019-1541-4)
126. Prather MJ, Holmes CD, Hsu J. 2012 Reactive greenhouse gas scenarios: systematic exploration of uncertainties and the role of atmospheric chemistry. *Geophys. Res. Lett.* **39**, L09803. (doi:10.1029/2012GL051440)
127. Collins WJ, Frame DJ, Fuglestedt JS, Shine KP. 2020 Stable climate metrics for emissions of short and long-lived species—combining steps and pulses. *Environ. Res. Lett.* **15**, 024018. (doi:10.1088/1748-9326/ab6039)
128. Mengis N, Matthews HD. 2020 Non-CO<sub>2</sub> forcing changes will likely decrease the remaining carbon budget for 1.5°C. *npj Clim. Atmos. Sci.* **3**, 1–7. (doi:10.1038/s41612-019-0105-5)
129. UK Government. 2020 *The Sixth Carbon Budget. The UK's path to Net Zero*. Committee on Climate Change. See <https://www.theccc.org.uk/publication/sixth-carbon-budget/>
130. Forabosco F, Chitchyan Z, Mantovani R. 2017 Methane, nitrous oxide emissions and mitigation strategies for livestock in developing countries: a review. *S. Afr. J. Anim. Sci.* **47**, 268–280. (doi:10.4314/sajas.v47i3.3)
131. Pekkarinen V. 2020 Going beyond CO<sub>2</sub>: strengthening action on global methane emissions under the UN climate regime. *Rev. Eur. Comp. Int. Environ. Law* **29**, 464–478. (doi:10.1111/reel.12329)
132. Tanset *al.* 2020 The power of greenhouse gases. US NOAA. See <https://www.esrl.noaa.gov/gmd/ccgg/ghgpower/>
133. Wolff E, Spahni R. 2007 Methane and nitrous oxide in the ice core record. *Phil. Trans. R. Soc. A* **365**, 1775–1792. (doi:10.1098/rsta.2007.2044)
134. Prather MJ *et al.* 2015 Measuring and modeling the lifetime of nitrous oxide including its variability. *J. Geophys. Res. Atmos.* **120**, 5693–5705. (doi:10.1002/2015JD023267)
135. Griffis TJ, Chen Z, Baker JM, Wood JD, Millet DB, Lee X, Venterea RT, Turner PA. 2017 Nitrous oxide emissions are enhanced in a warmer and wetter world. *Proc. Natl Acad. Sci. USA* **114**, 12 081–12 085. (doi:10.1073/pnas.1704552114)
136. Tian H *et al.* 2020 A comprehensive quantification of global nitrous oxide sources and sinks. *Nature* **586**, 248–256. (doi:10.1038/s41586-020-2780-0)

137. Prosser JI, Hink L, Gubry-Rangin C, Nicol GW. 2020 Nitrous oxide production by ammonia oxidizers: physiological diversity, niche differentiation and potential mitigation strategies. *Glob. Change Biol.* **26**, 103–118. (doi:10.1111/gcb.14877)
138. Bellandi G, Weijers S, Gori R, Nopens I. 2020 Towards an online mitigation strategy for N<sub>2</sub>O emissions through principal components analysis and clustering techniques. *J. Environ. Manage.* **261**, 110219. (doi:10.1016/j.jenvman.2020.110219)
139. Zhang M, Gu J, Liu Y. 2019 Engineering feasibility, economic viability and environmental sustainability of energy recovery from nitrous oxide in biological wastewater treatment plant. *Bioresour. Technol.* **282**, 514–519. (doi:10.1016/j.biortech.2019.03.040)
140. De Klein CAM, Van Der Weerden TJ, Luo J, Cameron KC, Di HJ. 2020 A review of plant options for mitigating nitrous oxide emissions from pasture-based systems. *N. Z. J. Agric. Res.* **63**, 29–43. (doi:10.1080/00288233.2019.1614073)
141. Wrage-Mönnig N, Horn MA, Well R, Müller C, Velthof G, Oenema O. 2018 The role of nitrifier denitrification in the production of nitrous oxide revisited. *Soil Biol. Biochem.* **123**, A3–A16. (doi:10.1016/j.soilbio.2018.03.020)
142. Van Nguyen Q. 2017 Effects of cattle slurry and nitrification inhibitor application on spatial soil O<sub>2</sub> dynamics and N<sub>2</sub>O production pathways. *Soil Biol. Biochem.* **114**, 200–209. (doi:10.1016/j.soilbio.2017.07.012)
143. Kritee K *et al.* 2018 High nitrous oxide fluxes from rice indicate the need to manage water for both long-and short-term climate impacts. *Proc. Natl Acad. Sci. USA* **115**, 9720–9725. (doi:10.1073/pnas.1809276115)
144. Smith KA, Mosier AR, Crutzen PJ, Winiwarter W. 2012 The role of N<sub>2</sub>O derived from crop-based biofuels, and from agriculture in general, in Earth's climate. *Phil. Trans. R. Soc. B* **367**, 1169–1174. (doi:10.1098/rstb.2011.0313)
145. Pauleta SR, Carepo MSP, Moura I. 2019 Source and reduction of nitrous oxide. *Coord. Chem. Rev.* **387**, 436–449. (doi:10.1016/j.ccr.2019.02.005)
146. Li Y, Fichot CG, Geng L, Scarratt MG, Xie H. 2020 The contribution of methane photoproduction to the oceanic methane paradox. *Geophys. Res. Lett.* **47**, e2020GL088362. (doi:10.1029/2020GL088362)
147. Wilson ST *et al.* 2020 Ideas and perspectives: a strategic assessment of methane and nitrous oxide measurements in the marine environment. *Biogeosciences* **17**, 5809–5828. (doi:10.5194/bg-17-5809-2020)