



# Accounting for Natural Uncertainty Within Monitoring Systems for Induced Seismicity Based on Earthquake Magnitudes

Corinna Roy<sup>1\*</sup>, Andy Nowacki<sup>1</sup>, Xin Zhang<sup>2</sup>, Andrew Curtis<sup>2,3</sup> and Brian Baptie<sup>4</sup>

<sup>1</sup> School of Earth and Environment, University of Leeds, Leeds, United Kingdom, <sup>2</sup> School of GeoSciences, University of Edinburgh, Edinburgh, United Kingdom, <sup>3</sup> Department of Earth Sciences, ETH Zurich, Zurich, Switzerland, <sup>4</sup> British Geological Survey, Edinburgh, United Kingdom

## OPEN ACCESS

### Edited by:

Francesco Grigoli,  
ETH Zurich, Switzerland

### Reviewed by:

Arnaud Mignan,  
Southern University of Science and  
Technology, China  
Marco Broccardo,  
University of Trento, Italy

### \*Correspondence:

Corinna Roy  
earcroy@leeds.ac.uk

### Specialty section:

This article was submitted to  
Solid Earth Geophysics,  
a section of the journal  
Frontiers in Earth Science

**Received:** 28 November 2020

**Accepted:** 16 April 2021

**Published:** 28 May 2021

### Citation:

Roy C, Nowacki A, Zhang X, Curtis A  
and Baptie B (2021) Accounting for  
Natural Uncertainty Within Monitoring  
Systems for Induced Seismicity Based  
on Earthquake Magnitudes.  
*Front. Earth Sci.* 9:634688.  
doi: 10.3389/feart.2021.634688

To reduce the probability of future large earthquakes, traffic light systems (TLSs) define appropriate reactions to observed induced seismicity depending on each event's range of local earthquake magnitude ( $M_L$ ). The impact of velocity uncertainties and station site effects may be greater than a whole magnitude unit of  $M_L$ , which can make the difference between a decision to continue ("green" TLS zone) and an immediate stop of operations ("red" zone). We show how to include these uncertainties in thresholds such that events only exceed a threshold with a fixed probability. This probability can be set by regulators to reflect their tolerance to risk. We demonstrate that with the new TLS, a red-light threshold would have been encountered earlier in the hydraulic fracturing operation at Preston New Road, UK, halting operations and potentially avoiding the later large magnitude events. It is therefore critical to establish systems which permit regulators to account for uncertainties when managing risk.

**Keywords:** induced seismicity, local magnitude, uncertainties, traffic light system, hydraulic fracture, mining, Monte - Carlo method

## 1. INTRODUCTION

The increasing number of industrial operations related to hydrocarbon extraction, geothermal power production, hydraulic fracturing for shale gas exploitation, wastewater injection, water impoundment, hydrocarbon storage, and mining operations in recent years, and the potential for large-scale subsurface CO<sub>2</sub> storage in future, has increased the importance of understanding and de-risking induced seismicity both to the scientific community and to the public who live near such operations (Grigoli et al., 2017). The potential to induce seismicity by human activities is well-known (McGarr et al., 2002; Elsworth et al., 2016; Foulger et al., 2018; Keranen and Weingarten, 2018; Schultz et al., 2020). Military waste fluid injected in the Rocky Mountain Arsenal in the 1960s near Denver, Colorado (Healy et al., 1968), induced the so-called "Denver earthquakes." Since then induced earthquakes related to mining (Arabasz et al., 2005; Fritschen, 2010), oil and gas field depletion (Bardainne et al., 2008; Van Thienen-Visser and Breunese, 2015) shale gas exploitation (Bao and Eaton, 2016; Clarke et al., 2019; Lei et al., 2019), geothermal exploitation (Håring et al., 2008; Deichmann and Giardini, 2009), and waste water disposal (Ellsworth, 2013) have been documented around the world (Baisch et al., 2019). In the UK, induced earthquakes related to hydraulic fracturing at Preese Hall (Clarke et al., 2014), and Preston New Road

(Clarke et al., 2019) have been observed, and the latter led to an indefinitely imposed UK government moratorium on fracking.

Traffic light systems (TLS; Bommer et al., 2006; Majer et al., 2012; Mignan et al., 2017; Baisch et al., 2019) are used widely to manage hazard and risk due to induced seismicity in geothermal and hydrocarbon industries, whereby operations are continued (“green”), amended (“amber”), or stopped (“red”) based on the local event magnitude. In the original TLS developed by Bommer et al. (2006), the TLS thresholds are based on peak ground velocity, but other TLSs have been implemented based on earthquake magnitude or other ground motion parameters, such as peak ground acceleration (Ader et al., 2020). Depending on the industrial activities, criteria for a TLS may be very different. Baisch et al. (2019) and He et al. (2020) summarized some examples of existing TLSs that correspond to different industrial activities. In the UK the “amber” and “red” thresholds for induced seismicity related to unconventional oil and gas operations are set to local earthquake magnitudes  $M_L = 0$  and  $M_L = 0.5$ , respectively, and this has led to multiple halts of hydraulic fracturing operations during the past few years (Clarke et al., 2019) and finally to an immediate moratorium of operations in November 2019.

The thresholds between zones in TLS are often defined based on limited case studies and on *a priori* assumptions in a best effort to provide simple schemes (Grigoli et al., 2017; Baisch et al., 2019). Consequently, they do not necessarily take into account the range of possible scenarios, nor uncertainties in event magnitudes, and hence some operations will incorrectly continue, increasing the risk of larger triggered earthquakes, while others will be wrongly halted. To ensure actions taken are robust, it is therefore necessary to estimate local magnitudes with uncertainties, and to consider them in the choice of  $M_L$  thresholds in TLSs.

Assessing accurate magnitudes for human-induced earthquakes such as shale gas stimulation, waste water storage, or enhanced geothermal systems is difficult, because they are affected by lack of knowledge about the Earth’s subsurface between the source and receivers and by the magnitude scale used (Kendall et al., 2019). A standard approach to determine  $M_L$  is to first locate the earthquake and then apply an empirical scaling relation to the source-to-receiver distance (Gutenberg and Richter, 1942; Gutenberg, 2013). Source location-related uncertainties in  $M_L$  can then be evaluated using the location confidence ellipses. Unfortunately, estimating errors on  $M_L$  due to velocity model uncertainties, energy attenuation during propagation or site effects such as wavefield focusing is difficult.

It is well-known that the accuracy of hypocenter locations depends largely on the velocity model accuracy (Husen and Hardebeck, 2010). Various efforts have been made to estimate velocity model uncertainties, by including a correction term to traveltime curve predictions (Myers et al., 2007), making random perturbations around a given velocity model (Poliannikov et al., 2013) and by locating seismic events in an ensemble of velocity models obtained by a Bayesian analysis of independent data (Gesret et al., 2011; Hauser et al., 2011). Recently, Garcia-Aristizabal et al. (2020) analyzed different sources of uncertainty that can be relevant for the determination of earthquake source

locations, and introduced a logic-tree-based ensemble modeling approach for framing the problem in a decision-making context. Their approach, however, is not fully probabilistic, but limited to a finite set of explored models.

Here we propose a way to calculate local magnitudes with uncertainties for microseismic events, and to include the uncertainties in the design of TLS. We use a 3D Monte Carlo non-linear traveltime tomography method to jointly invert for hypocenter locations and velocity model. This allows us to obtain posterior distributions for local magnitude  $M_L$ , which cover both velocity and source location uncertainties. Results clearly show that velocity uncertainties and station site effects are significant and change the zones of the TLS to which events are assigned, hence they directly affect safety related decisions. We then apply our method to the hydraulic fracturing induced seismicity at Preston New Road, UK and a mining site, and demonstrate that a red-light would have been encountered earlier if uncertainties would have been accounted for in the TLS thresholds.

## 2. METHODS AND DATA

Usually, local magnitudes  $M_L$  are calculated by first locating the earthquake using standard linearized earthquake location methods (e.g., Klein, 2002), which require simple assumptions about the unknown underlying subsurface seismic velocity structure, and then applying an empirical scaling relation to the source-receiver distance to determine  $M_L$  (Gutenberg and Richter, 1942; Gutenberg, 2013). The solution found by such location methods depends on the *a priori* best guess velocity model, and so it is not guaranteed to find a location near that of the true earthquake. They also cannot represent uncertainties on  $M_L$  related to velocity model uncertainties, energy attenuation during propagation, or site effects such as wavefield focusing.

### 2.1. Non-linear Joint Hypocenter-Velocity Travel-Time Tomography

We use a probabilistic approach to jointly invert for hypocenter locations and 3D subsurface velocity. Our approach is based on a reversible jump Markov chain Monte Carlo algorithm (Green, 1995), which is an iterative stochastic method to generate samples from a target probability density. In a Bayesian approach all information is described in probabilistic terms. The goal is to calculate the posterior probability distribution function (pdf) which describes the probability of model  $\mathbf{m}$  being true given observed data  $\mathbf{d}$  and other relevant, *a priori* information. The posterior pdf is defined using Bayes’ theorem (Jaynes, 2003); this combines prior knowledge about the model the prior probability  $p(\mathbf{m})$  with a likelihood function  $p(\mathbf{d}|\mathbf{m})$  that describes the probability of observing the data if the particular given model  $\mathbf{m}$  was true. In our approach, the posterior probability is a trans-dimensional function: the number of parameters is not fixed, and hence the posterior pdf is defined across a number of spaces with different dimensionalities.

We use the approach and code of Zhang et al. (2020) and use arrival times of *P* and *S* body waves from local earthquakes as data, and include the velocity model, the average arrival time

uncertainties, source locations and original time as parameters. The 3D subsurface velocity model is defined in terms of a Voronoi tessellation of constant velocity cells, where both the position of Voronoi cells and their number can change during sampling, guided by the data and prior information. However, due to the parsimony of Bayesian inference, complicated models (models with many cells) tend to be rejected in favor of simpler models, if they fit the data equally well. The full model vector  $\mathbf{m}$  is given by

$$\mathbf{m} = (\sigma, n, \mathbf{s}, \mathbf{V}_s, \mathbf{V}_p, \mathbf{e}), \tag{1}$$

where  $n$  is the number of Voronoi cells,  $\mathbf{s}$  describes their positions, and  $\mathbf{V}_s$  and  $\mathbf{V}_p$  describe the S- and P wave velocity within each Voronoi cell. The vector  $\mathbf{e} = (e_x^1, e_y^1, e_z^1, e_t^1, \dots, e_x^N, e_y^N, e_z^N, e_t^N)$  contains source locations and origin times of  $N$  events, and  $\sigma$  is the arrival time data uncertainty. The travel time uncertainties for event  $i$  are defined as Zhang et al. (2018):

$$\sigma_i = \sigma_0 t_i + \sigma_1, \tag{2}$$

where  $\sigma_0$  and  $\sigma_1$  are noise hyperparameters and  $t$  the  $P$  or  $S$  travel time.

We initialize 20 Markov chains with randomly generated starting models drawn from the prior distribution so that each chain starts from a different point in model space. To minimize dependence on this initial model, chains progress through a large number of samples called the burn-in phase from which all models are discarded. To reduce dependence of each sample on the next, after burn-in we only store every 200th model to use as samples of the posterior distribution. Each chain sampled 1.88 million models. At each step of the Markov chain a new model  $\mathbf{m}'$  is generated by perturbing the current model. In our approach we have seven types of possible perturbation: adding, removing or moving a Voronoi cell (i.e., changing  $\mathbf{s}$ ), changing the  $P$  or  $S$  velocity of a randomly chosen Voronoi cell ( $\mathbf{V}_p, \mathbf{V}_s$ ), changing the noise hyperparameter  $\sigma$ , or changing the source coordinates of one randomly chosen source ( $\mathbf{e}$ ). The type of perturbation is selected randomly at each iteration, and the candidate model  $\mathbf{m}'$  is accepted with a probability  $\alpha$  (Green, 1995) given by:

$$\alpha(\mathbf{m}'|\mathbf{m}) = \min \left[ 1, \frac{p(\mathbf{m}') q(\mathbf{m}|\mathbf{m}') p(\mathbf{d}_{obs}|\mathbf{m}')}{p(\mathbf{m}) q(\mathbf{m}'|\mathbf{m}) p(\mathbf{d}_{obs}|\mathbf{m})} |\mathbf{J}| \right] \tag{3}$$

where  $\mathbf{J}$  is the Jacobian matrix of the transformation from  $\mathbf{m}$  to  $\mathbf{m}'$  and is used to account for the volume changes of parameter space during jumps between dimensions, and  $q(\mathbf{m}|\mathbf{m}')$  are proposal distributions that we use to propose new models  $\mathbf{m}'$  at each step. In our case, it can be shown that the Jacobian is an identity matrix (Zhang et al., 2018).

A key function in the acceptance probability is the likelihood  $p(\mathbf{d}|\mathbf{m})$  which quantifies the misfit between the observed data  $\mathbf{d}_{obs}$  and estimated data  $\mathbf{d}_{est}$  obtained by an eikonal solver using the fast marching method (Rawlinson and Sambridge, 2004) in model  $\mathbf{m}$ . The likelihood is defined as:

$$p(\mathbf{d}|\mathbf{m}) \propto \exp \left( \frac{-\phi(\mathbf{m})}{2} \right) \tag{4}$$

where

$$\phi(\mathbf{m}) = \sum_i \frac{(d_{obs}^i - d_{est}^i)^2}{\sigma_i} \tag{5}$$

and  $\sigma_i$  is the  $P$  or  $S$  wave travel time uncertainty for event  $i$  given by Equation (2). The likelihood function contains both the effect of the errors in the source locations and the velocity model uncertainties on the travel times. We choose uniform priors for the source location coordinates and the number of Voronoi cells, and Gaussian priors for all other parameters. A full and more detailed description of the methodology can be found in Zhang et al. (2018, 2020).

### 2.2. $M_L$ Scaling Relations

A general local magnitude scaling relation is described by

$$M_L = \log_{10}(A) + a \log_{10}(r) + br + c + d \exp(fr), \tag{6}$$

where  $r$  is the hypocentral distance in km, and  $A$  is the zero-to-peak amplitude in nm on the horizontal components filtered with a Wood-Anderson response (Ottemöller and Sargeant, 2013; Butcher et al., 2017; Luckett et al., 2018). Parameters  $a, b, c, d$ , and  $f$  are region dependent constants which describe the geometrical spreading ( $a$ ), attenuation ( $b$ ), the base level ( $c$ ), and distance dependent correction terms ( $d$  and  $f$ ), respectively.

The original BGS scaling relation given by Ottemöller and Sargeant (2013) is

$$M_L^{OS} = \log_{10}(A) + 1.11 \log_{10}(r) + 0.00189r - 2.09. \tag{7}$$

This was updated by Butcher et al. (2017) to account for short source-receiver distances, giving

$$M_L^B = \log_{10}(A) + 1.17 \log_{10}(r) + 0.0514r - 3. \tag{8}$$

The  $M_L$  scaling relation now used by the BGS (Luckett et al., 2018) is:

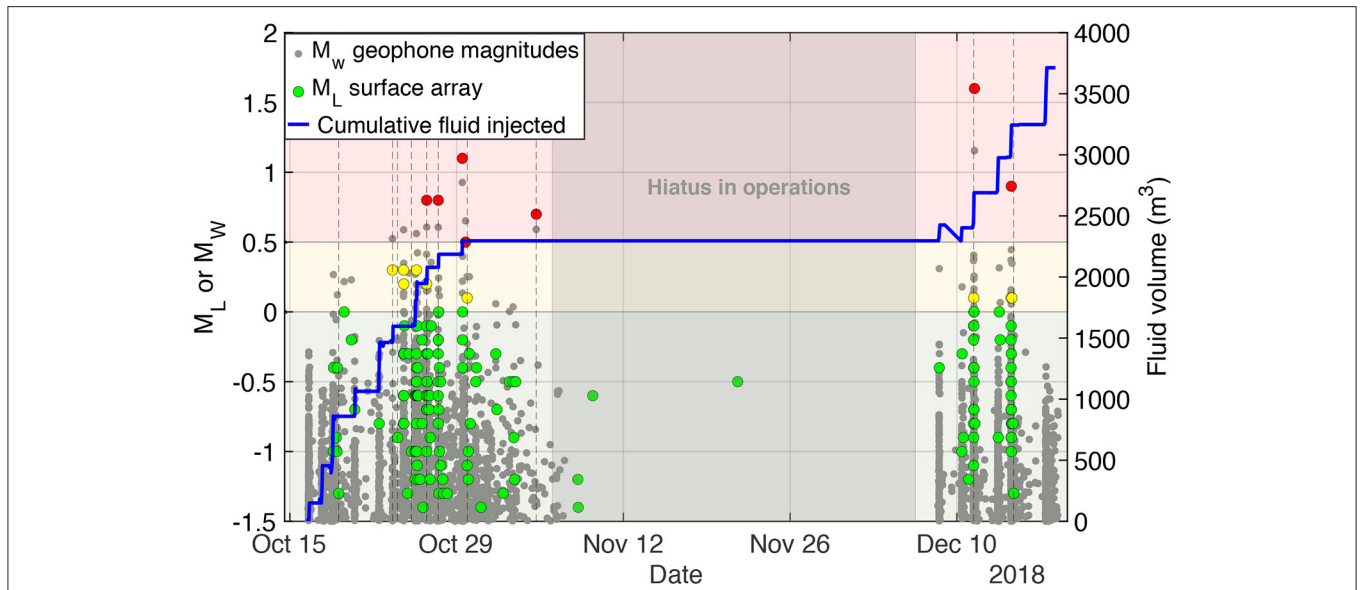
$$M_L^L = \log_{10}(A) + 1.11 \log_{10}(r) + 0.00189r - 1.16 \exp(-0.2r) - 2.09. \tag{9}$$

The latter scale was used for the BGS locations throughout this paper.

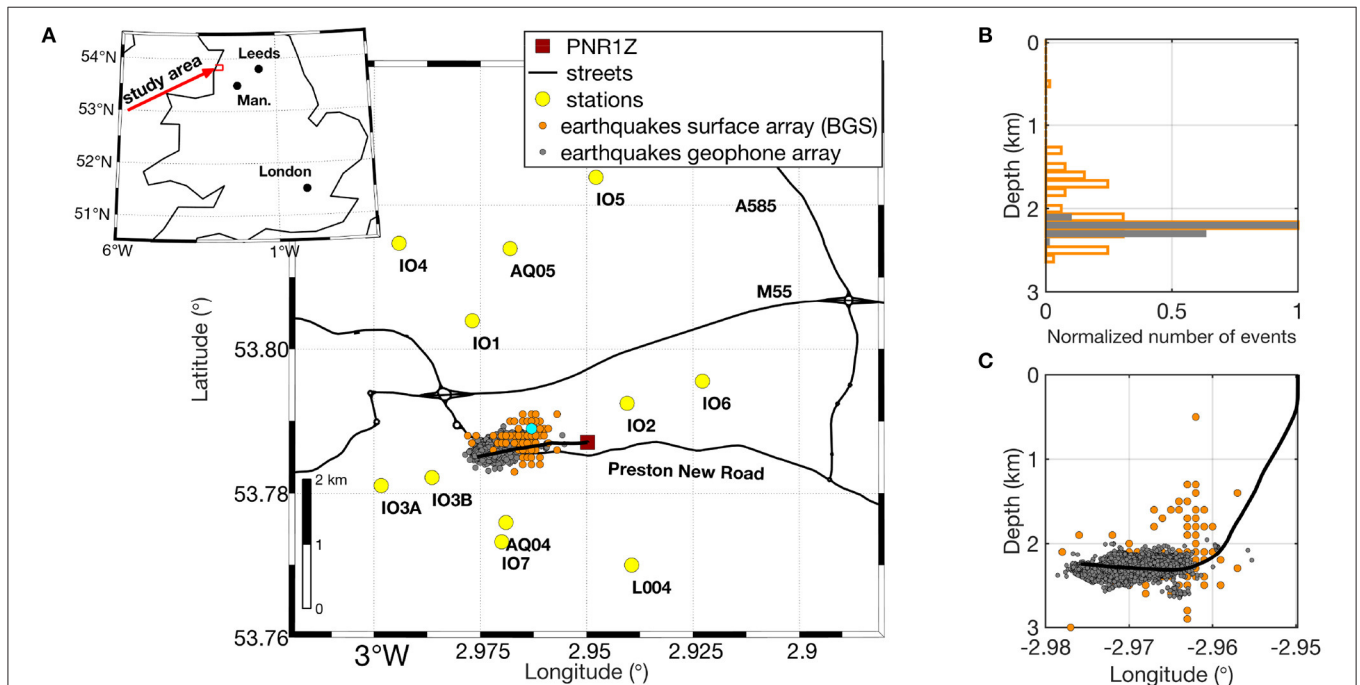
### 2.3. Data

We use data from surface seismic monitoring arrays at two sites in the United Kingdom: (1) Preston New Road, where hydraulic fracturing took place in the Bowland Shale tight gas reservoir, and (2) Thoresby Colliery, a deep coal mine in Nottinghamshire.

At Preston New Road, hydraulic fracturing started on 15 October 2018 at the PNR-1z well in Lancashire, UK under the guidance of Cuadrilla Resources Ltd. and targeted the Bowland shale at a depth of  $\sim 2,300$  m (Clarke et al., 2019). During operations, the British Geological Survey (BGS) detected 172 local seismic events with local magnitudes  $M_L$  between  $-1.8$  and  $1.6$ . The  $M_L = 0$  threshold (“amber”) was exceeded by nine events, six of which had local magnitudes larger than  $0.5$  (“red” zone). In late October 2018, five events occurred that exceeded



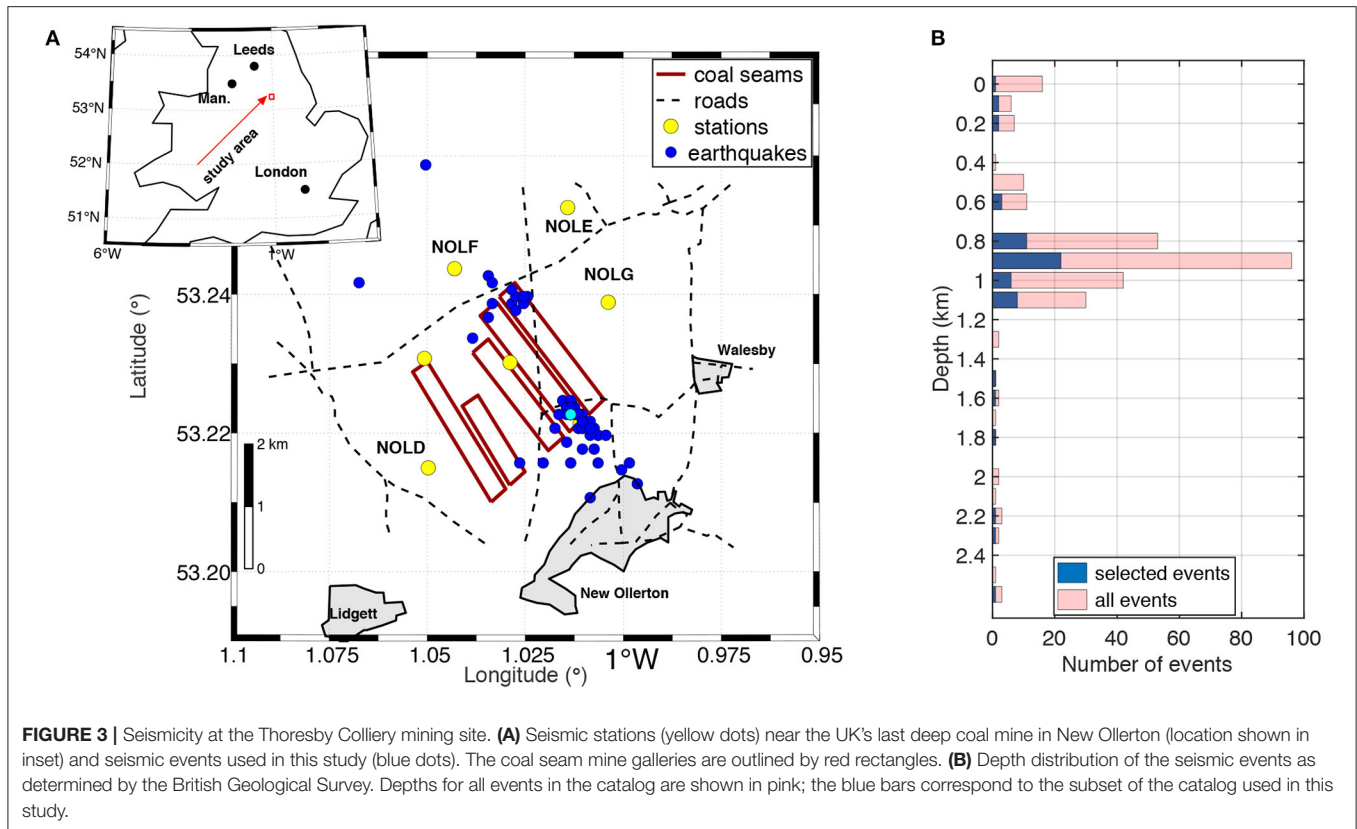
**FIGURE 1 |** Induced seismicity at hydraulic fracturing site at Preston New Road, UK. Background colors indicate the three zones of the UK TLS. Smaller gray dots show the moment magnitude ( $M_w$ ) for events observed on the dowhole geophone array. Larger dots show the local magnitude ( $M_L$ ) for events observed by the surface seismometer array, and are color-coded by the TLS zone into which they fall. The blue line shows the cumulative volume of fluid injected into the well.



**FIGURE 2 |** Seismicity at Preston New Road. **(A)** Seismic stations (yellow dots) near the Preston New Road hydraulic fracturing site near Blackpool (location shown in inset) and seismic events used in this study (orange dots). The injection well is shown by a black line. The cyan dot marks an earthquake discussed in **Figure 5**. **(B)** Histogram of depth distribution of the seismic events recorded at the surface array (orange) and the downhole geophone array (gray). **(C)** Distribution of seismic events.

the red light TLS thresholds after which operations were paused for a month, but microseismicity still occurred during the hiatus (**Figure 1**). The largest event with  $M_L = 1.6$ , which was felt by some local residents, occurred on 11 December 11:21:15 UTC

after operations resumed on 8 December. Hydraulic fracturing operations of the well ended on 17 December 2018. Over the course of 3 months more than 38,000 microseismic events were detected in real-time with the geophone array, with moment



magnitudes  $M_w$  between  $-3.1$  and  $1.6$  (Clarke et al., 2019). We analyzed the  $P$ - and  $S$ -wave travel time data for the 172 largest earthquakes which were recorded at 11 seismic stations by the BGS (Figure 2). The majority of these events occurred between 2 and 2.5 km depth and occur in the vicinity of the well.

### 2.3.1. Thoresby Colliery

Thoresby Colliery in New Ollerton has a history of seismicity related to mining (Bishop et al., 1993), and in response to felt earthquakes between December 2013 and January 2014, the British Geological Survey (BGS) installed a temporary seismic network with seven seismometer stations, four of which are three-component broadband stations (Figure 3). Mining-induced earthquakes are some of the most widely studied and their magnitude and depth range is similar to fracking induced earthquake magnitudes (Davies et al., 2013), hence provide an excellent analog for the study of hydrofracturing induced seismicity.

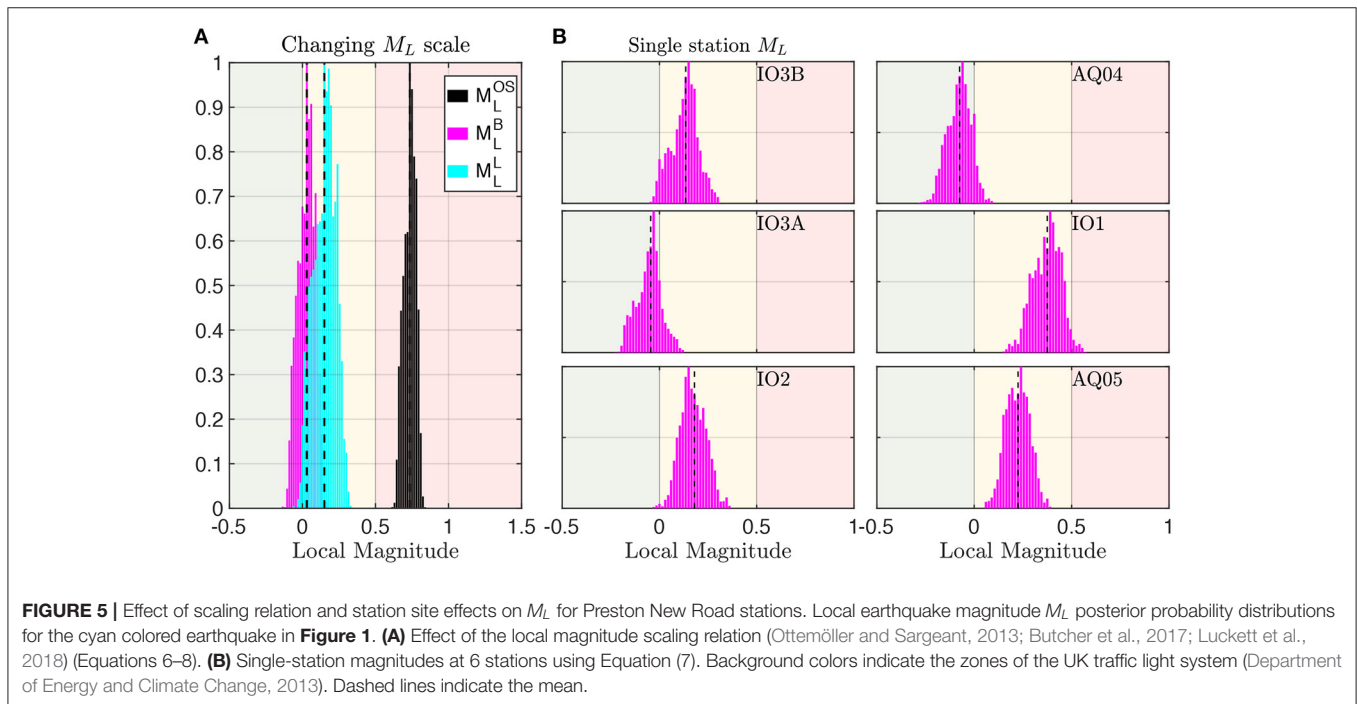
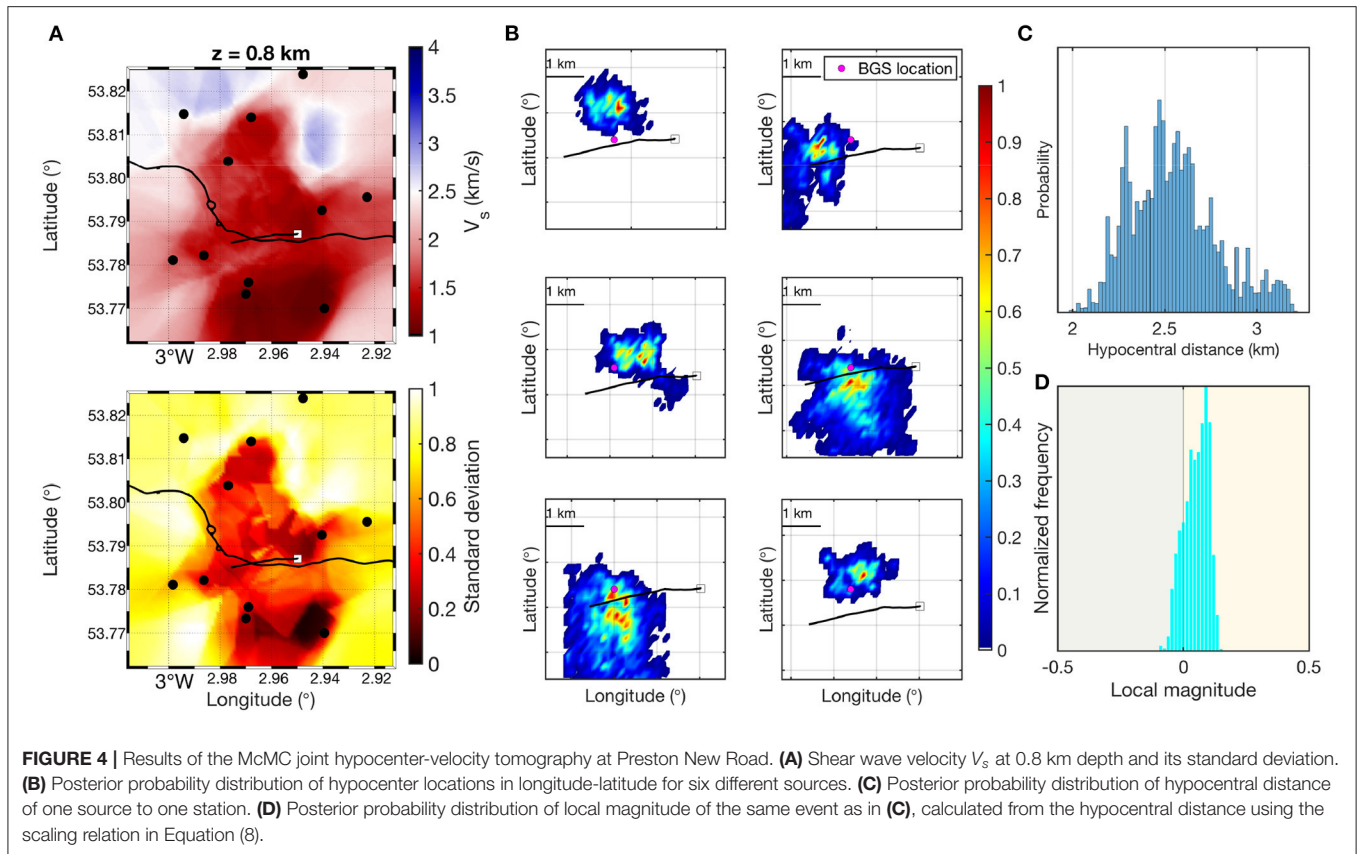
Most of the seismic events used in this study are located north and south of the coal seams (Figure 3), and the majority of the events occurs at 800 m depth, which coincides with the depth of the coal seams (Butcher et al., 2017). The northern cluster occurred later in 2014 than the southern one. To reduce the computational costs we only use 61 seismic events out of the 305 recorded, giving 769  $P$ - and  $S$  travel times to invert.

## 3. RESULTS

The MCMC joint inversion provides us 3D posterior distributions of seismic velocities ( $V_p$  and  $V_s$ ), and of the earthquake hypocenter locations (Figures 4A,B). Therefore, we can calculate hypocentral distance posterior distributions (Figure 4C), which in turn allows us to estimate station-average local magnitudes  $M_L$  posterior distributions (Figure 4D) using a scaling relation (e.g., one of Equations 6–8). These distributions include the effects of velocity and source location uncertainties as well as the source radiation pattern on the pdf for event magnitudes. The station-averaged  $M_L$  posterior distribution for one source may have a width that spans more than one zone of the traffic light system (e.g., cyan distribution in Figure 4D) which indicates that velocity model uncertainties alone can change the TLS zone to which the earthquake is attributed. Thus, uncertainties affect real operational decisions.

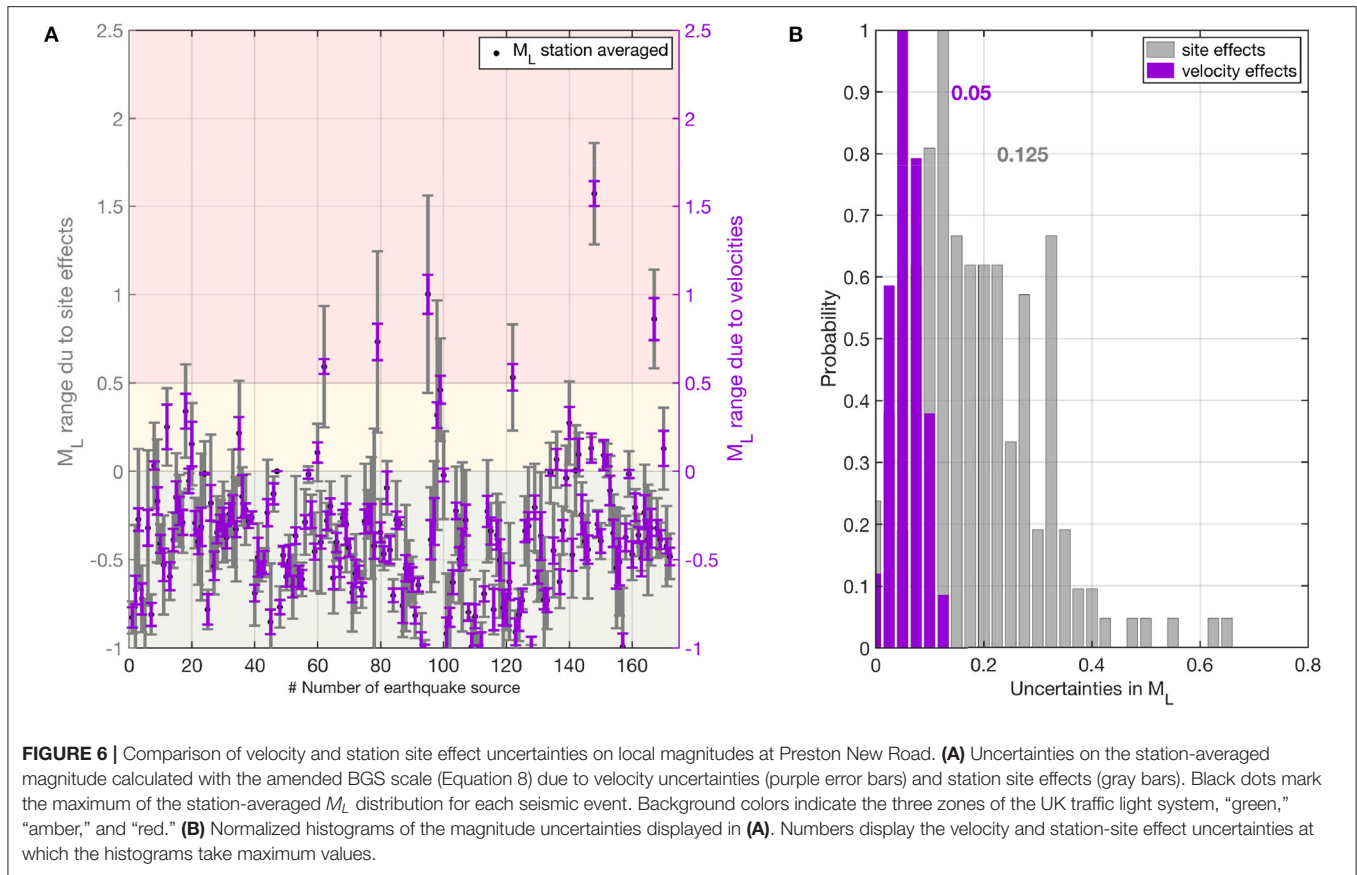
### 3.1. Scaling Relation and Station Site Effects on $M_L$

Figure 5 summarizes uncertainties in  $M_L$  due to scaling relation and station site effects at one station at Preston New Road. We observe that the particular choice of  $M_L$  scaling relation affects the local magnitude and is itself large enough to change the TLS zone. Local magnitudes are more than half a magnitude unit larger using the original BGS scaling relation ( $M_L^{OS}$ , Equation 6) compared to the most recent scale ( $M_L^L$ , Equation



8) (**Figure 5A**; **Supplementary Figure 1**) and therefore make a difference between a continuation (“green”) and an immediate stop (“red”). Note, however, that the original BGS scaling relation

was not used by the BGS to calculate  $M_L$  for these events; we include it here to show the effect of magnitude scale choices. The difference in  $M_L$  between the  $M_L^B$  scale (Equation 7) and the most



recent UK scaling relation  $M_L^I$  (Equation, 8) are smaller, but peaks of distributions can lie in different zones of the TLS (**Figure 5A**).

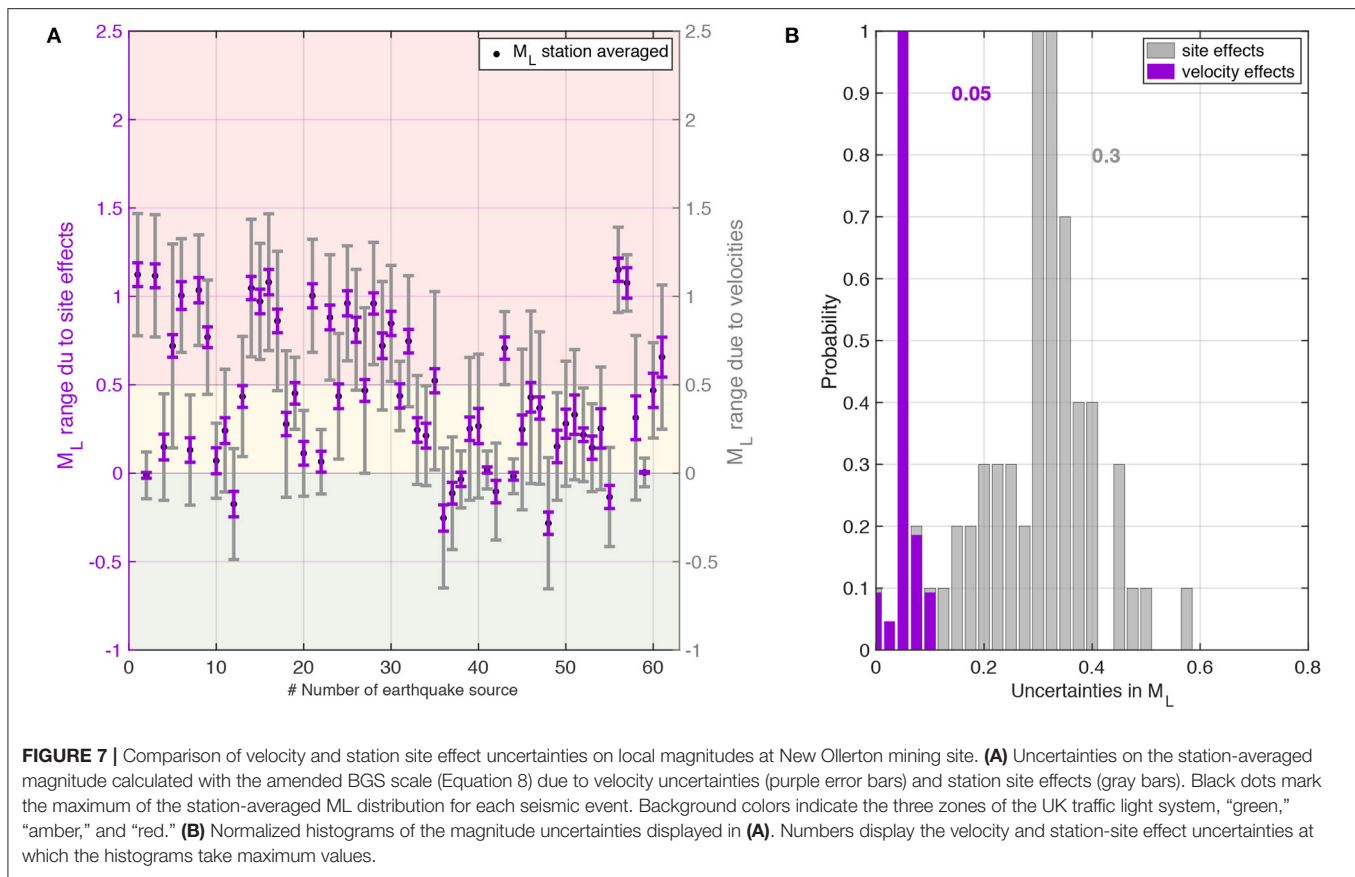
Station site effects such as attenuation, focusing, and radiation pattern become evident by comparing  $M_L$  distributions at individual stations. These uncertainties can shift the  $M_L$  posterior distribution for one source by half a magnitude unit, sometimes more, easily sufficient to move the source into another zone of the TLS (**Figure 5B**; **Supplementary Figure 2**). We compare velocity and station site effect uncertainties on local magnitudes in **Figure 6** for the hydraulic fracturing induced earthquakes at Preston New Road. The site effect uncertainties are estimated by calculating the mean local magnitude for each seismic source at all 4 stations (using the amended BGS scaling relation, Equation, 8), and then taking the difference between the smallest and largest mean station magnitude as a measure of site-related uncertainties. The velocity-related uncertainties are defined as the width of the interval between the 5–95% percentile of the station-averaged local magnitudes distributions. Their effects each average around  $\pm 0.125$  and  $\pm 0.05$  magnitude units, respectively, in our case study, but they vary and can have a combined effect that alters magnitude estimates by up to a whole magnitude unit (**Figure 6**). We observe that uncertainties are also roughly equally important for the mining induced seismicity at New Ollerton—their effects average around  $\pm 0.3$  and  $\pm 0.05$  magnitude units for site and velocity-related effects, respectively—with a combined effect that again can alter

magnitude estimates by up to a whole magnitude unit, and potentially move events from “green” to “red” zones (**Figure 7**).

#### 4. A PROBABILISTIC TRAFFIC LIGHT SYSTEM

We can now include the velocity and station site effect uncertainties in  $M_L$  in a traffic light system (TLS). To do this, we first calculate  $M_L$  threshold probability curves using the station-averaged  $M_L$  posterior distributions of the microseismic events at Preston New Road. Threshold probability curves describe the probability that an earthquake of a given magnitude is in any one zone of the TLS. They take into account velocity and station-site effect uncertainties, as well as attenuation and geometrical spreading in  $M_L$ . Furthermore, the threshold probability curves allow us to draw conclusions about the range of observed  $M_L$  for which the probability of any earthquake being in a zone drops below a given confidence level  $\alpha$ . The last point is particularly interesting for regulators and operators because it enables them to define the thresholds between zones in such a way that the probability of an earthquake being in each zone of the TLS is always above a chosen confidence level  $\alpha$ .

$M_L$  threshold probability curves are obtained by shifting each of the 172 station-averaged event  $M_L$  pdfs along the local magnitude axis and estimating the percentage of the distribution lying in each of the three zones of the TLS



(Supplementary Figure 3). By averaging over all threshold probabilities curves, we obtain one curve that describes the probability of an earthquake with a given magnitude being in any zone of the TLS. This can then be used to draw conclusions about (1) probabilities of earthquakes of a certain event magnitude  $M_L$  being in any one of the TLS zones, and (2) the  $M_L$  range for which the probability of any earthquake being in a zone drops below a given confidence level  $\alpha$ .

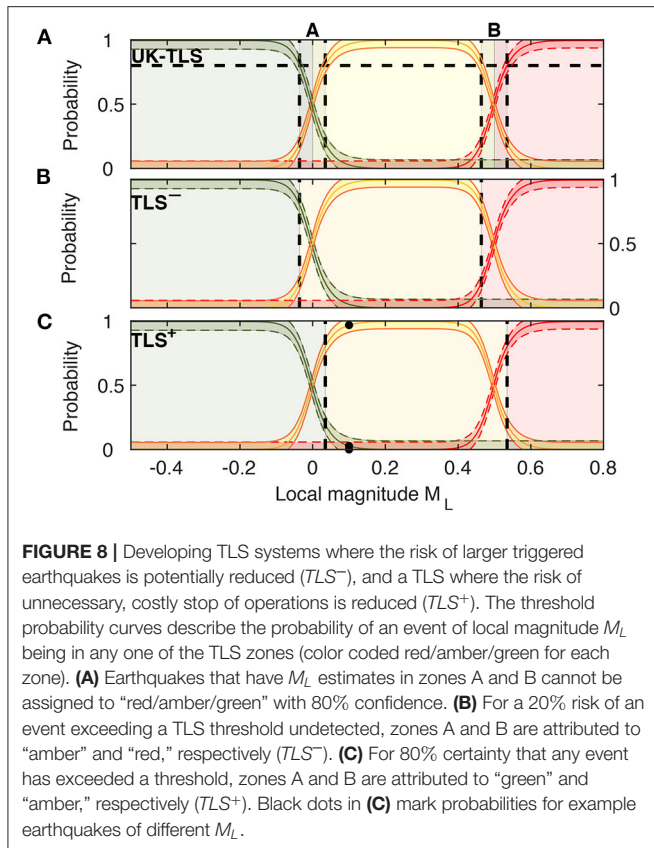
Our approach here is approximate, but once the first inversion is performed, subsequent assignment of a new event’s  $M_L$  to the correct zone of an adjusted TLS is trivial and can be done in real time, as explained below. In theory, however, the most rigorous approach to incorporating uncertainty into the calculation of  $M_L$  for any one event is to retrieve its full posterior  $M_L$  distribution, which is the averaged pdf across all stations for that one event. Although at this point we can do this for any existing event in our dataset, in practice we want to be able to do this for each new event that occurs, in real time. This presents a large challenge, however, since formally we must add the travel times from this new event to our dataset and re-run the whole sampling procedure again. We have added one new earthquake to the dataset and sampled 140,000 new models. This took 14,880 CPU-hours on the ARCHER HPC machine, and so remains practically impossible for real time monitoring. Furthermore, the  $M_L$  pdf of the new event is still sparsely sampled, and hence does not allow for a robust  $M_L$  uncertainty quantification.

#### 4.1. TLS With Realistic Uncertainties

A regulator or operator can choose whether they wish to minimize the probability of any such event exceeding a TLS threshold undetected, or to maximize the certainty that an event truly has exceeded the legal magnitude limits in order to avoid unnecessary, costly halt of operations. We term the first  $TLS^-$ , where the  $M_L$  thresholds are shifted toward smaller apparent-magnitude thresholds. In this way, the risk of smaller-magnitude events leading to large earthquakes is reduced because operations are both halted and put “on caution” earlier. In the latter, the TLS thresholds would effectively be increased to higher values ( $TLS^+$ ), so that operations could still continue up to larger apparent earthquake magnitudes. The choice of the risk system by the operator ( $TLS^+$  or  $TLS^-$ ) is, however, subjective and depends on the country’s governmental policies. The choice of the confidence level defines the TLS thresholds, but these as well as the risk strategy can be changed at any time.

For example, say a regulator or operator chooses that the confidence level with which each event is assigned to the correct zone must be at least 80% for decisions to be made. The range of estimated  $M_L$  values that would have less than  $\alpha = 0.8$  probability is  $-0.036 < M_L < 0.035$  (zone A) and  $0.46 < M_L < 0.53$  (zone B) (gray zones in Figure 8A) using the current UK TLS thresholds. Then, in a  $TLS^-$ , all of zone A would be attributed to “amber,” and zone B to “red,” effectively moving the TLS





thresholds to lower values (Figure 8B). Alternatively, in a  $TLS^+$ , zone A would be assigned to “green” and zone B to “amber,” so the TLS thresholds would effectively be increased to higher values (Figure 8C).

The uncertainties in  $M_L$  discussed here are site specific so need to be determined for each geographical area or industrial operation individually. However, our approach can be applied to any site and to any form of induced seismicity. We have also demonstrated that for the Thoresby Colliery mining site in the UK the velocity model and station site effect uncertainties in  $M_L$  are non-negligible (Figure 7), and can be accounted for in the choice of TLS thresholds (Supplementary Figure 4).

## 5. APPLICATION OF A PROBABILISTIC TLS TO PRESTON NEW ROAD SEISMICITY

We can use the three TLSs (Figure 8) to analyze retrospectively how decisions would have changed at Preston New Road under a  $TLS^+$  or  $TLS^-$  (Figure 9). We compare here the classification in the UK-TLS, a  $TLS^-$  and  $TLS^+$  for a 80% confidence level (Figure 5). That means, the risk of exceeding a TLS threshold in  $TLS^-$  is 20%, while in the  $TLS^+$ , the certainty that a threshold was exceeded is 80%. The earthquake on October 19th would have been classified as “amber” in all three TLSs using the maximum probability magnitude, whereas it was classified as “green” by the operator. Hence, action would have been taken earlier and the

probability of subsequent larger events would have been reduced. The same is true for the seismicity on October 24th (Figure 9B), where operations would have stopped immediately with a safety prioritizing system ( $TLS^-$ ), and also in the UK TLS with a  $M_L$  that accounts for uncertainties. This demonstrates the importance of accounting for uncertainties in local magnitudes  $M_L$  in the decision-making process.

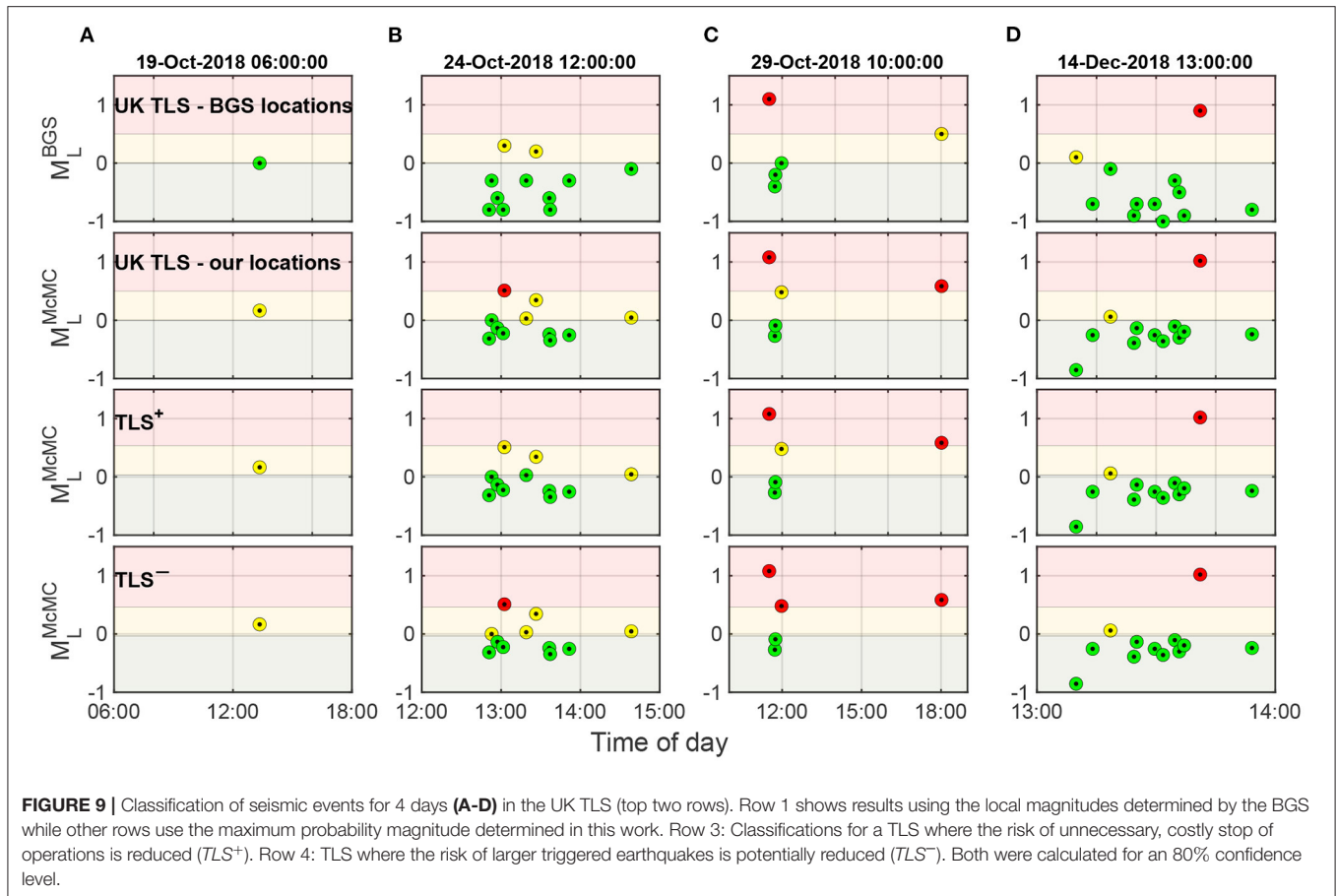
We acknowledge that the occurrence of induced seismicity is a multi-parameter phenomenon, depending on details of subsurface structures as well as on the complete history of operational measures and therefore cannot be predicted. Deformation processes may continue and can still induce seismicity after injections stop. The delay time between hydraulic fracturing completion and the cessation of the observed seismicity can be up to several years (Baisch et al., 2019). It is therefore speculative that an earlier stop would have prevented large magnitude post-injection seismicity at PNR. Nevertheless, it has been shown that lower  $M_L$  threshold values in the TLS used for the geothermal stimulation in Basel, Switzerland could have prevented larger magnitude post-injection seismicity (Baisch et al., 2019). We therefore argue that it is critical to establish systems which permit regulators to account for uncertainties while managing risk, as we propose here.

## 6. CONCLUSIONS

We implemented a fully Bayesian approach for analysing uncertainties, such as velocity model and source location uncertainties in local earthquake magnitudes and evaluate their influence on decision-making for induced seismicity. We conclude that these uncertainties are important, as they can make a difference of up to one or two magnitude unit, and hence directly affect operational decisions by potentially moving an earthquake two zones in a traffic light system (TLS) leading to radically different operational outcomes.

To build a site-specific probabilistic TLS that accounts for uncertainties, the following three steps are necessary: (1) run one fully non-linear hypocenter-velocity tomography for the site and calculate  $M_L$  posterior distributions for each earthquake. (2) calculate threshold probability curves, choose a desired confidence level  $\alpha$ , and determine the  $M_L$  zones A and B below the desired confidence level. (3) attribute zone A and B to “green/amber” or “amber/red” according to the desired safety system (reduce the risk of larger magnitude events ( $TLS^-$ ) or reduce the risk of halting operations unnecessarily ( $TLS^+$ )). From this point on, real time assignment of any new event’s  $M_L$  to the correct TLS zone is trivial, yet incorporates all the uncertainty in the measurements.

We applied our method to anthropogenic seismicity at a hydraulic fracturing site in the UK, and demonstrate that a red-light threshold would have been encountered earlier in a  $TLS^-$ , which possibly could have prevented the UK-wide shut-down. We also applied our methods to mining-related seismicity at Thoresby Colliery, UK and find they



apply equally well in this different setting. Hence, our approach can be applied to any site and any form of seismicity.

## DATA AVAILABILITY STATEMENT

The original contributions presented in the study are included in the article/**Supplementary Materials**, further inquiries can be directed to the corresponding author/s.

## AUTHOR CONTRIBUTIONS

CR processed the data, performed the analysis, prepared the figures, and wrote the paper. XZ developed the inversion code. BB provided the data of both case studies. All authors contributed to the interpretation of the results and the writing of the paper.

## REFERENCES

Ader, T., Chendorain, M., Free, M., Saarno, T., Heikkinen, P., Malin, P. E., et al. (2020). Design and implementation of a traffic light system for

## FUNDING

This work was supported by the Natural Environment Research Council [grant number NE/R001154/1].

## ACKNOWLEDGMENTS

This work used the ARCHER UK National Supercomputing Service (<http://www.archer.ac.uk>) and ARC3, part of the High Performance Computing facilities at the University of Leeds, UK. The authors thank the Edinburgh Interferometry Project sponsors for supporting this research. We thank two reviewers for their comments to improve this manuscript.

## SUPPLEMENTARY MATERIAL

The Supplementary Material for this article can be found online at: <https://www.frontiersin.org/articles/10.3389/feart.2021.634688/full#supplementary-material>

deep geothermal well stimulation in Finland. *J. Seismol.* 24, 991–1014. doi: 10.1007/s10950-019-09853-y

Arabasz, W. J., Nava, S. J., McCarter, M. K., Pankow, K. L., Pechmann, J. C., Ake, J., et al. (2005). Coal-mining seismicity and ground-shaking hazard: a case study

- in the Trail Mountain Area, Emery County, Utah. *Bull. Seismol. Soc. Am.* 95, 18–30. doi: 10.1785/0120040045
- Baisch, S., Koch, C., and Muntendam-Bos, A. (2019). Traffic light systems: to what extent can induced seismicity be controlled? *Seismol. Res. Lett.* 90, 1145–1154. doi: 10.1785/0220180337
- Bao, X., and Eaton, D. W. (2016). Fault activation by hydraulic fracturing in Western Canada. *Science* 354, 1406–1409. doi: 10.1126/science.aag2583
- Bardainne, T., Dubos-Sallée, N., Sénéchal, G., Gaillot, P., and Perroud, H. (2008). Analysis of the induced seismicity of the Lacq gas field (Southwestern France) and model of deformation. *Geophys. J. Int.* 172, 1151–1162. doi: 10.1111/j.1365-246X.2007.03705.x
- Bishop, I., Styles, P., and Allen, M. Q. (1993). Mining-induced seismicity in the Nottinghamshire Coalfield. *Q. J. Eng. Geol. Hydrogeol.* 26, 253–279. doi: 10.1144/GSL.QJEGH.1993.026.004.03
- Bommer, J. J., Oates, S., Cepeda, J. M., Lindholm, C., Bird, J., Torres, R., et al. (2006). Control of hazard due to seismicity induced by a hot fractured rock geothermal project. *Eng. Geol.* 83, 287–306. doi: 10.1016/j.enggeo.2005.11.002
- Butcher, A., Luckett, R., Verdon, J. P., Kendall, J.-M., Baptie, B., and Wookey, J. (2017). Local magnitude discrepancies for near-event receivers: implications for the UK traffic-light scheme. *Bull. Seismol. Soc. Am.* 107, 532–541. doi: 10.1785/0120160225
- Clarke, H., Eisner, L., Styles, P., and Turner, P. (2014). Felt seismicity associated with shale gas hydraulic fracturing: the first documented example in Europe. *Geophys. Res. Lett.* 41, 8308–8314. doi: 10.1002/2014GL062047
- Clarke, H., Verdon, J. P., Kettlety, T., Baird, A. F., and Kendall, J. (2019). Real-time imaging, forecasting, and management of human-induced seismicity at Preston New Road, Lancashire, England. *Seismol. Res. Lett.* 90, 1902–1915. doi: 10.1785/0220190110
- Davies, R., Foulger, G., Bindley, A., and Styles, P. (2013). Induced seismicity and hydraulic fracturing for the recovery of hydrocarbons. *Mar. Petrol. Geol.* 45, 171–185. doi: 10.1016/j.marpetgeo.2013.03.016
- Deichmann, N., and Giardini, D. (2009). Earthquakes induced by the stimulation of an enhanced geothermal system below Basel (Switzerland). *Seismol. Res. Lett.* 80, 784–798. doi: 10.1785/gssrl.80.5.784
- Department of Energy and Climate Change (2013). *Onshore Oil and Gas Exploration in the UK: Regulation and Best Practice*. Technical report.
- Ellsworth, W. L. (2013). Injection-induced earthquakes. *Science* 341:1225942. doi: 10.1126/science.1225942
- Elsworth, D., Spiers, C. J., and Niemeijer, A. R. (2016). Understanding induced seismicity. *Science* 354, 1380–1381. doi: 10.1126/science.aal2584
- Foulger, G. R., Wilson, M. P., Gluyas, J. G., Julian, B. R., and Davies, R. J. (2018). Global review of human-induced earthquakes. *Earth Sci. Rev.* 178, 438–514. doi: 10.1016/j.earscirev.2017.07.008
- Fritschen, R. (2010). Mining-induced seismicity in the Saarland, Germany. *Pure Appl. Geophys.* 167, 77–89. doi: 10.1007/s00024-009-0002-7
- García-Aristizabal, A., Danesi, S., Braun, T., Anselmi, M., Zaccarelli, L., Famiani, D., et al. (2020). Epistemic uncertainties in local earthquake locations and implications for managing induced seismicity. *Bull. Seismol. Soc. Am.* 110, 2423–2440. doi: 10.1785/0120200100
- Gesret, A., Noble, M., Desassis, N., and Romary, T. (2011). “Microseismic monitoring: consequences of velocity model uncertainties on location uncertainties,” in *Third EAGE Passive Seismic Workshop-Actively Passive 2011*. Athens.
- Green, P. J. (1995). Reversible jump Markov chain Monte Carlo computation and Bayesian model determination. *Biometrika* 82, 711–732.
- Grigoli, F., Cesca, S., Priolo, E., Rinaldi, A. P., Clinton, J. F., Stabile, T. A., et al. (2017). Current challenges in monitoring, discrimination, and management of induced seismicity related to underground industrial activities: a European perspective. *Rev. Geophys.* 55, 310–340. doi: 10.1002/2016RG000542
- Gutenberg, B. (2013). *Seismicity of the Earth and Associated Phenomena*. Princeton: Read Books Ltd.
- Gutenberg, B., and Richter, C. F. (1942). Earthquake magnitude, intensity, energy, and acceleration. *Bull. Seismol. Soc. Am.* 32, 163–191.
- Häring, M. O., Schanz, U., Ladner, F., and Dyer, B. C. (2008). Characterisation of the Basel 1 enhanced geothermal system. *Geothermics* 37, 469–495. doi: 10.1016/j.geothermics.2008.06.002
- Hauser, J., Dyer, K. M., Pasyanos, M. E., Bungum, H., Faleide, J. I., Clark, S. A., et al. (2011). A probabilistic seismic model for the European Arctic. *J. Geophys. Res.* 116, B01303. doi: 10.1029/2010JB007889
- He, M., Li, Q., and Li, X. (2020). Injection-induced seismic risk management using machine learning methodology – A perspective study. *Front. Earth Sci.* 8:227. doi: 10.3389/feart.2020.00227
- Healy, J. H., Rubey, W. W., Griggs, D. T., and Raleigh, C. B. (1968). The Denver earthquake. *Science* 161, 1301–1310. doi: 10.1126/science.161.3848.1301
- Husen, S., and Hardebeck, J. (2010). Earthquake location accuracy. CORSSA.
- Jaynes, E. T. (2003). *Probability Theory: The Logic of Science*. Cambridge: Cambridge University Press.
- Kendall, J.-M., Butcher, A., Stork, A. L., Verdon, J. P., Luckett, R., and Baptie, B. (2019). How big is a small earthquake? Challenges in determining microseismic magnitudes. *First Break* 37, 51–56. doi: 10.3997/1365-2397.n0015
- Keranen, K. M., and Weingarten, M. (2018). Induced Seismicity. *Annu. Rev. Earth Planet. Sci.* 46, 149–174. doi: 10.1146/annurev-earth-082517-010054
- Klein, F. W. (2002). *User's Guide to HYPOINVERSE-2000, a Fortran Program to Solve for Earthquake Locations and Magnitudes*. Technical report, US Geological Survey.
- Lei, X., Wang, Z., and Su, J. (2019). The december 2018 ML 5.7 and january 2019 ML 5.3 earthquakes in South Sichuan Basin induced by shale gas hydraulic fracturing. *Seismol. Res. Lett.* 90, 1099–1110. doi: 10.1785/0220190029
- Luckett, R., Ottemöller, L., Butcher, A., and Baptie, B. (2018). Extending local magnitude ML to short distances. *Geophys. J. Int.* 216, 1145–1156. doi: 10.1093/gji/ggy484
- Majer, E., Nelson, J., Robertson-Tait, A., Savy, J., and Wong, I. (2012). *Protocol for Addressing Induced Seismicity Associated With Enhanced Geothermal Systems*. US Department of Energy, Energy Efficiency and Renewable Energy, 52.
- McGarr, A., Simpson, D., and Seeber, L. (2002). “40 - Case Histories of Induced and Triggered Seismicity,” in *International Handbook of Earthquake and Engineering Seismology, Part A*, volume 81 of *International Geophysics*, eds W. H. Lee, H. Kanamori P. C. Jennings and C. Kisslinger (Academic Press), 647–661.
- Mignan, A., Broccardo, M., Wiemer, S., and Giardini, D. (2017). Induced seismicity closed-form traffic light system for actuarial decision-making during deep fluid injections. *Sci. Rep.* 7:13607. doi: 10.1038/s41598-017-13585-9
- Myers, S. C., Johannesson, G., and Hanley, W. (2007). A Bayesian hierarchical method for multiple-event seismic location. *Geophys. J. Int.* 171, 1049–1063. doi: 10.1111/j.1365-246X.2007.03555.x
- Ottmøller, L., and Sargeant, S. (2013). A local magnitude scale ML for the United Kingdom. *Bull. Seismol. Soc. Am.* 103, 2884–2893. doi: 10.1785/0120130085
- Poliannikov, O. V., Prange, M., Malcolm, A., and Djikpesse, H. (2013). A unified Bayesian framework for relative microseismic location. *Geophys. J. Int.* 194, 557–571. doi: 10.1093/gji/ggt119
- Rawlinson, N., and Sambridge, M. (2004). Multiple reflection and transmission phases in complex layered media using a multistage fast marching method. *Geophysics* 69, 1338–1350. doi: 10.1190/1.1801950
- Schultz, R., Beroza, G., Ellsworth, W., and Baker, J. (2020). Risk-informed recommendations for managing hydraulic fracturing-induced seismicity via traffic light protocols. *Bull. Seismol. Soc. Am.* 110, 2411–2422. doi: 10.1785/0120200016
- Van Thienen-Visser, K., and Breunese, J. (2015). Induced seismicity of the Groningen gas field: history and recent developments. *Leading Edge* 34, 664–671. doi: 10.1190/tle34060664.1
- Zhang, X., Curtis, A., Galetti, E., and de Ridder, S. (2018). 3D Monte Carlo surface wave tomography. *Geophys. J. Int.* 215, 1644–1658. doi: 10.1093/gji/ggy362
- Zhang, X., Roy, C., Curtis, A., Nowacki, A., and Baptie, B. (2020). Imaging the subsurface using induced seismicity and ambient noise: 3D Tomographic Monte Carlo joint inversion of earthquake body wave travel times and surface wave dispersion. *Geophys. J. Int.* 222, 1639–1655. doi: 10.1093/gji/ggaa230

**Conflict of Interest:** The authors declare that the research was conducted in the absence of any commercial or financial relationships that could be construed as a potential conflict of interest.

The handling editor declared a shared affiliation with one of the authors AC at time of review.

Copyright © 2021 Roy, Nowacki, Zhang, Curtis and Baptie. This is an open-access article distributed under the terms of the Creative Commons Attribution License (CC BY). The use, distribution or reproduction in other forums is permitted, provided the original author(s) and the copyright owner(s) are credited and that the original publication in this journal is cited, in accordance with accepted academic practice. No use, distribution or reproduction is permitted which does not comply with these terms.