

## Article (refereed) - postprint

---

Sharps, Katrina; Hayes, Felicity; Harmens, Harry; Mills, Gina. 2021. **Ozone-induced effects on leaves in African crop species.**

© 2020 Elsevier B.V.

This manuscript version is made available under the CC BY-NC-ND 4.0 license

<https://creativecommons.org/licenses/by-nc-nd/4.0/>



This version is available at <http://nora.nerc.ac.uk/id/eprint/529240>

Copyright and other rights for material on this site are retained by the rights owners. Users should read the terms and conditions of use of this material at <https://nora.nerc.ac.uk/policies.html#access>.

**This is an unedited manuscript accepted for publication, incorporating any revisions agreed during the peer review process. There may be differences between this and the publisher's version. You are advised to consult the publisher's version if you wish to cite from this article.**

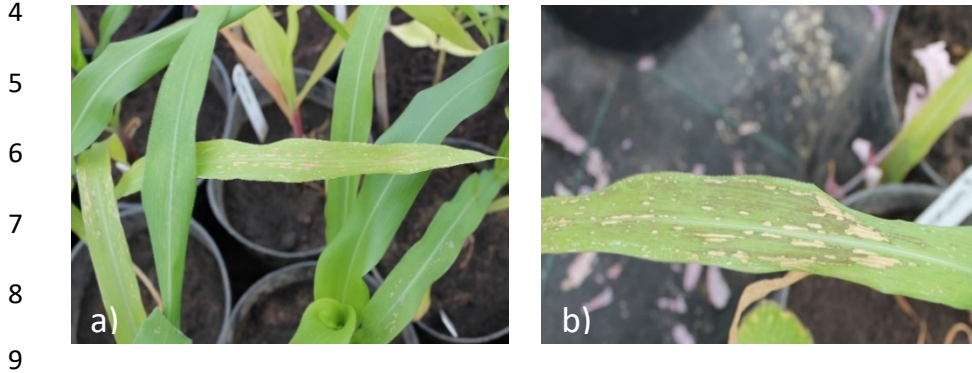
**The definitive version was published in *Environmental Pollution*, 268 (A), 115789. <https://doi.org/10.1016/j.envpol.2020.115789>**

The definitive version is available at <https://www.elsevier.com/>

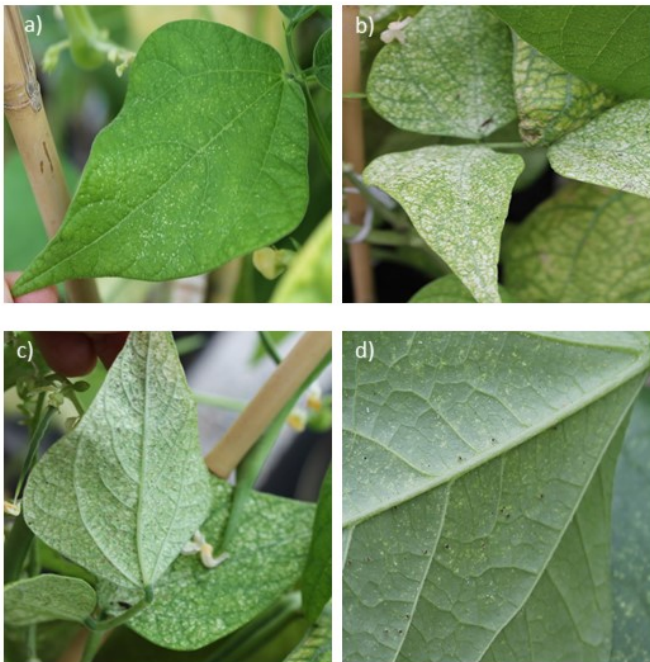
Contact UKCEH NORA team at  
[noraceh@ceh.ac.uk](mailto:noraceh@ceh.ac.uk)

1 Ozone-induced effects on leaves in African crop species.  
2 Sharps, K. et al.

3 Supplementary Material



10 **Figure S1.** Visible ozone symptoms on maize (*Zea mays*) leaves after an ozone exposure pilot study  
11 in late summer 2019.



13 **Figure S2:** Red spider mite infestation on Common bean (*Phaseolus vulgaris*). White webbing  
14 appears on the upper surface of the leaf, which can become extensive in some cases (S2a, b). Unlike  
15 leaf symptoms caused by ozone, spider mite symptoms can be found on both surfaces of the leaf,  
16 and are not limited to interveinal areas. The dark coloured, pin-head sized mites can be seen  
17 crawling on the underside of the leaf (S2c, d).



18 **Figure S3:** Progression of visible ozone symptoms in: a) Finger millet (*Eleusine coracana*); b)  
 19 Chickpea (*Cicer arietinum*); c) Peanut (*Arachis hypogaea*); d) Common wheat (*Triticum aestivum*); e)  
 20 Pearl millet (*Pennisetum glaucum*).

21  
 22  
 23

24 **Sources of seeds used in the experiment**

25 Wheat (*Triticum aestivum*) seeds were obtained from the Kenya Agriculture and Livestock Research  
26 Organisation (KALRO; Njoro-Kenya). Finger millet (*Eleusine coracana*) and pearl millet (*Pennisetum*  
27 *glaucum*) seeds were obtained from the International Crops Research Institute for the Semi-Arid  
28 Tropics (ICRISAT-Nairobi, Kenya). Widely grown cultivars of common bean (*Phaseolus vulgaris*)  
29 ('Black Turtle', 'Cannellini', 'Orca', 'Pinto') were obtained from Jungle Seeds Ltd, UK.  
30 (<http://www.jungleseeds.co.uk/>) The *P. vulgaris* cultivars 'Mbombo', 'Tiger' and 'Rajama,' and the  
31 cowpea (*Vigna unguiculata*), amaranth (*Amaranthus hypochondriacus*) and peanut (*Arachis*  
32 *hypogaea*) seeds were obtained from Rareseeds (<https://www.rareseeds.com/store/vegetables>).  
33 Sweet potato (*Ipomoea batatas*), mung bean (*Vigna radiata*) and maize (*Zea mays*) seeds were  
34 obtained from Thompson and Morgan, UK (<https://www.thompson-morgan.com/>). The sorghum  
35 (*Sorghum bicolor*) and chickpea (*Cicer arietinum*) seeds were obtained from ICRISAT-India. The barley  
36 (*Hordeum vulgare*) was supplied by Syngenta, UK (<https://www.syngenta.co.uk/>).

37

38

39

40

41

42

43

44

45

46

47

48

49

50 **Table S1:** Growing season mean ozone values (weekly mean and mean daily maximum) for the  
 51 ambient and heated domes for low, medium and high ozone in 2017, 2018 and 2019. Note that an  
 52 ozone-temperature interactions study was not carried out. Two temperature regimes are shown  
 53 because wheat (grown in 2017) was exposed at ambient temperatures to better represent the  
 54 growing conditions of this crop.

<b>Year: 2017</b>		<b>Ozone concentration</b>	
O <sub>3</sub> treatment	Temperature regime	Weekly mean (ppb)	Mean daily max. (ppb)
Low	Ambient	25.6	32.5
Medium	Ambient	40.2	67.3
High	Ambient	45.8	84
Low	Ambient + 7°C	25.4	33.9
Medium	Ambient + 7°C	40.6	70.6
High	Ambient + 7°C	47.8	93
<b>Year: 2018</b>			
<b>Year: 2018</b>		<b>Ozone concentration</b>	
O <sub>3</sub> treatment	Temperature regime	Weekly mean (ppb)	Mean daily max. (ppb)
Low	Ambient + 7°C	21.6	32.4
Medium	Ambient + 7°C	37.8	69.8
High	Ambient + 7°C	44.3	90.4
<b>Year: 2019</b>			
<b>Year: 2019</b>		<b>Ozone concentration</b>	
O <sub>3</sub> treatment	Temperature regime	Weekly mean (ppb)	Mean daily max. (ppb)
Low	Ambient + 7°C	24.7	32.5
Medium	Ambient + 7°C	41.3	71.2
High	Ambient + 7°C	49.2	92.4

55  
 56  
 57  
 58  
 59  
 60  
 61  
 62  
 63  
 64  
 65  
 66  
 67  
 68  
 69  
 70  
 71  
 72

73 **Table S2:** Ozone exposure start and end dates for 2017, 2018 and 2019 (dd/mm/yyyy). Ozone exposure began  
74 when plants reached the vegetative stage (~3-5 weeks after sowing). Plants were exposed to ozone for the  
75 duration of the growing season (with the exception of pearl millet, which grew very quickly and had to be  
76 moved to a greenhouse at ambient ozone concentration with more space after 5 weeks of ozone exposure).  
77 Due to the different growth cycle of the different species used, ozone exposure length varied between species.

Species	Cultivar	Ozone treatment start	Ozone treatment end
Wheat	Korongo	18/05/2017	25/07/2017
	Eagle	18/05/2017	25/07/2017
	Njoro	18/05/2017	25/07/2017
	Hawk	18/05/2017	25/07/2017
	Wren	18/05/2017	25/07/2017
Pearl millet	ICMV 221	24/05/2017	29/06/2017
	KAT PM1	24/05/2017	29/06/2017
	Okashana	24/05/2017	29/06/2017
	Shibe	24/05/2017	29/06/2017
Finger millet	GuluE	1/06/2017	28/09/2017
	KNE624	1/06/2017	28/09/2017
	KNE814	1/06/2017	28/09/2017
	Okhale	1/06/2017	28/09/2017
	P224	1/06/2017	28/09/2017
	U15	1/06/2017	28/09/2017
Mung bean	Unspecified	1/06/2017	5/09/2017
Common bean	Pinto	1/06/2017	31/07/2017
	Orca	1/06/2017	21/08/2017
	Black Turtle	1/06/2017	02/08/2017
	Cannellini	1/06/2017	25/08/2017
	Mbombo	6/06/2018	23/08/2018
	Rajama	6/06/2018	16/08/2018
	Tiger	6/06/2018	16/08/2018
Cowpea	Black-eye	1/06/2017	21/08/2017
	Blue Goose	6/06/2018	23/08/2018
	Hog brains	6/06/2018	23/08/2018
	Old Timer	6/06/2018	16/08/2018
	Razorback	6/06/2018	16/08/2018
	Whippoorwill	6/06/2018	16/08/2018
Chickpea	ICC 15333	19/09/2017	3/11/2017
Amaranth	Pygmy Torch	6/06/2018	30/08/2018
Peanut	Negrato	6/06/2018	23/08/2018
	Tennessee red	6/06/2018	23/08/2018
Sorghum	IS1004	6/06/2018	6/08/2018
	IS27557	6/06/2018	6/08/2018

Barley	Propino	11/06/2019	1/10/2019
Sweet potato	Erato Orange	11/06/2019	1/11/2019
Maize	Incredible F1	27/08/2019	1/11/2019

78

79 **Table S3:** Climatic conditions in the solardomes during the growing season for 2017, 2018 and 2019.

80 Temperature and relative humidity were continuously measured in one ambient temperature solardome  
81 (2017) and three heated solardomes (2017, 2018, 2019). Photosynthetically Active Radiation (PAR) was  
82 continuously monitored each year in one ambient temperature dome. Seasonal mean  $\pm$  standard error is  
83 presented. Daylight mean temperature and Vapour-Pressure Deficit (VPD) were calculated using hourly values  
84 with  $>200$  PAR, and 12 hr mean PAR was calculated using the period 07:00 – 18:00.

85 **3a) 2017**

Ozone treatment	Temperature regime	Temperature, daylight mean ( $^{\circ}\text{C}$ )	VPD, daylight mean (kPa)	PAR, 12h mean ( $\text{mmol m}^{-2} \text{s}^{-1}$ )
Low	Ambient	$20.3 \pm 0.3$	$0.61 \pm 0.1$	$487 \pm 21$
Low	Ambient + $7^{\circ}\text{C}$	$27.2 \pm 0.3$	$1.89 \pm 0.1$	
Medium	Ambient + $7^{\circ}\text{C}$	$27.7 \pm 0.3$	$2.05 \pm 0.1$	
High	Ambient + $7^{\circ}\text{C}$	$27.3 \pm 0.3$	$1.87 \pm 0.1$	

86

87 **3b) 2018**

Ozone treatment <sup>1</sup>	Temperature regime	Temperature, daylight mean ( $^{\circ}\text{C}$ )	VPD, daylight mean (kPa)	PAR, 12h mean ( $\text{mmol m}^{-2} \text{s}^{-1}$ ) <sup>1</sup>
Low	Ambient			$572 \pm 18$
Low	Ambient + $7^{\circ}\text{C}$	$30.71 \pm 0.14$	$2.55 \pm 0.03$	
Medium	Ambient + $7^{\circ}\text{C}$	$29.62 \pm 0.13$	$2.37 \pm 0.03$	
High	Ambient + $7^{\circ}\text{C}$	$29.85 \pm 0.14$	$2.40 \pm 0.03$	

88

89 **3c) 2019**

Ozone treatment <sup>1</sup>	Temperature regime	Temperature, daylight mean ( $^{\circ}\text{C}$ )	VPD, daylight mean (kPa)	PAR, 12h mean ( $\text{mmol m}^{-2} \text{s}^{-1}$ ) <sup>1</sup>
Low	Ambient			$465 \pm 19$
Low	Ambient + $7^{\circ}\text{C}$	$29.16 \pm 0.11$	$2.22 \pm 0.02$	
Medium	Ambient + $7^{\circ}\text{C}$	$28.93 \pm 0.12$	$2.22 \pm 0.03$	
High	Ambient + $7^{\circ}\text{C}$	$28.92 \pm 0.14$	$2.32 \pm 0.03$	

90

91 **Table S4**

92 Results of regular leaf assessments for crop plants exposed to low, medium and high ozone (O<sub>3</sub>)  
 93 treatments in solardomes. The presence of visible ozone symptoms classed as 'Mild' = <5% of the  
 94 leaf showing ozone symptoms; 'Moderate' = 5-25% of the leaf showing ozone symptoms and  
 95 'Severe' = >25% of the leaf showing ozone symptoms, was recorded for each species.

<b>Species</b>	<b>Development of visible ozone symptoms on leaves</b>
Common wheat (flag leaf)	After 6 days of exposure, mild ozone symptoms seen in all wheat cultivars, in all treatments. Moderate ozone symptoms in 3 of 6 cultivars in medium O <sub>3</sub> , and 5 of 6 cultivars in high O <sub>3</sub> . Severe ozone symptoms in 1 cultivar in high O <sub>3</sub> . After 18 days, moderate ozone symptoms seen in all cultivars in medium and high O <sub>3</sub> , and severe ozone symptoms in 4 of 6 cultivars in medium O <sub>3</sub> , and all cultivars in high O <sub>3</sub> .
Pearl millet	After 7 days of exposure, mild ozone symptoms seen in medium and high O <sub>3</sub> treatments only. After 20 days, all but one cultivar showing severe ozone symptoms in medium and high O <sub>3</sub> treatments. No ozone symptoms in low O <sub>3</sub> treatment (final assessment was after 28 days of exposure).
Finger millet	After 5 days of exposure, mild ozone symptoms in medium O <sub>3</sub> , mild and moderate ozone symptoms in high O <sub>3</sub> . No ozone symptoms in low O <sub>3</sub> . After 12 days, 4 of 6 cultivars showing severe ozone symptoms in medium O <sub>3</sub> , and all 6 cultivars showing severe ozone symptoms in high O <sub>3</sub> . No ozone symptoms in low O <sub>3</sub> (final assessment was after 21 days of exposure).
Mung bean	After 8 days, mild ozone symptoms in medium O <sub>3</sub> only, after 12 days both medium and high O <sub>3</sub> showing mild ozone symptoms. By 19 days of exposure, medium and high O <sub>3</sub> showing severe ozone symptoms. Mild ozone symptoms appeared in low O <sub>3</sub> treatment after 27 days.
Common bean (2017 cultivars)	After 8 days of exposure, moderate ozone symptoms in medium O <sub>3</sub> , and moderate and severe in high O <sub>3</sub> . In the medium treatment, after 12 days, severe ozone symptoms seen in 2 cultivars, with all 4 cultivars showing severe ozone symptoms after 34 days. No ozone symptoms in low O <sub>3</sub> treatment recorded during growing season.
Cowpea	Visible ozone symptoms slow to appear. First week of clear ozone symptoms was after 4 weeks of exposure, with symptoms in high O <sub>3</sub> treatment only (mild, moderate and severe, depending on leaf age and cultivar; 2 cultivars with mild and moderate ozone symptoms, 1 with mild, moderate and severe symptoms, 1 with only mild symptoms, and 1 with no symptoms). After 8 weeks of exposure, no ozone symptoms in the low O <sub>3</sub> treatment, mild symptoms in 3 of 5 cultivars in medium O <sub>3</sub> .
Chickpea	Ad hoc leaf assessments only.
Amaranth	Ad hoc leaf assessments only.
Peanut	Ad hoc leaf assessments only.
Sorghum	Ad hoc leaf assessments only.
Barley	Ad hoc leaf assessments only.
Sweet potato	After 7 days of exposure, moderate ozone symptoms in both medium and high O <sub>3</sub> treatments.
Maize	Ad hoc leaf assessments only.



96 **Table S5:** Model results of the relationship between leaf number and the number of days of ozone  
 97 exposure, for common bean (*Phaseolus vulgaris*) cultivars exposed to low, medium and high ozone  
 98 ( $O_3$ ) treatments. Days<sup>2</sup> represents the inclusion of a quadratic term in the model, as the relationship  
 99 between leaf number and time showed a curved shape (first increasing with time, and then gradually  
 100 decreasing) for Orca, Pinto and Turtle beans.

101 **5a)** Optimal models (chosen using top down selection and Akaike's Information Criterion (AIC)) for  
 102 each *P. vulgaris* cultivar. The 'X' indicates that the model term was present in the optimal model.

<i>P. vulgaris</i> cultivar	Model terms				
	$O_3$	Days	Days + Days <sup>2</sup>	$O_3 * \text{Days}$	$O_3 * (\text{Days} + \text{Days}^2)$
Cannellini		X			
Orca	X		X	X	
Pinto	X		X		X
Turtle	X		X		X

103

104 **5b)** Results (p-values) for the interaction terms in the models for each bean cultivar.

Model	<i>P. vulgaris</i> cultivar			
	Cannellini	Orca	Pinto	Turtle
<b>Ozone * Days</b>	0.33	< 0.0001	< 0.0001	< 0.0001
Low vs High $O_3$	NA	< 0.0001	< 0.0001	< 0.0001
Low vs Medium $O_3$	NA	< 0.0001	< 0.001	0.019
Medium vs High $O_3$	NA	0.53	0.16	< 0.0001
<b>Ozone * Days<sup>2</sup></b>	NA	0.26	< 0.0001	< 0.0001
Low vs High $O_3$	NA	NA	0.002	< 0.0001
Low vs Medium $O_3$	NA	NA	< 0.0001	0.68
Medium vs High $O_3$	NA	NA	0.36	< 0.0001

105

106

107

108 **Table S6:** Model results (p-values) for investigation of the effect of increased ozone on percentage  
 109 flag leaf senescence in African wheat (*Triticum aestivum*) cultivars exposed to low, medium and high  
 110 ozone (O<sub>3</sub>) treatments. Values are for post-hoc tests (using the R package ‘emmeans’) comparing a)  
 111 African wheat cultivars at low, medium and high ozone; b) ozone treatment response for each  
 112 African wheat cultivar.

113 **6a)**

Contrasts (Wheat varieties)	p-values		
	Low O <sub>3</sub>	Medium O <sub>3</sub>	High O <sub>3</sub>
eagle - hawk	<0.0001	0.0004	0.77
eagle - korongo	<0.0001	0.0053	0.89
eagle - njoro	<0.0001	<0.0001	0.77
eagle - wren	<0.0001	<0.0001	0.53
hawk - korongo	0.96	0.95	0.99
hawk - njoro	0.67	0.88	1
hawk - wren	0.96	0.73	0.95
korongo - njoro	0.97	0.47	0.99
korongo - wren	1	0.34	0.82
njoro - wren	0.97	0.996	0.95

114

115 **6b)**

Contrasts (O <sub>3</sub> treatments)	p-values				
	Eagle	Hawk	Korongo	Njoro	Wren
high - low	0.040	<0.0001	<0.0001	<0.0001	<0.0001
high - medium	0.004	<0.0001	<0.0001	<0.0001	<0.0001
low - medium	0.004	0.026	0.023	0.91	0.82

116

117