

Supplement of The Cryosphere, 11, 1767–1780, 2017
<https://doi.org/10.5194/tc-11-1767-2017-supplement>
© Author(s) 2017. This work is distributed under
the Creative Commons Attribution 3.0 License.



Supplement of

Arctic Ocean surface geostrophic circulation 2003–2014

Thomas W. K. Armitage et al.

Correspondence to: Thomas W. K. Armitage (tom.w.armitage@jpl.nasa.gov)

The copyright of individual parts of the supplement might differ from the CC BY 3.0 License.

Contents

1. Supplementary Figures S1-S3

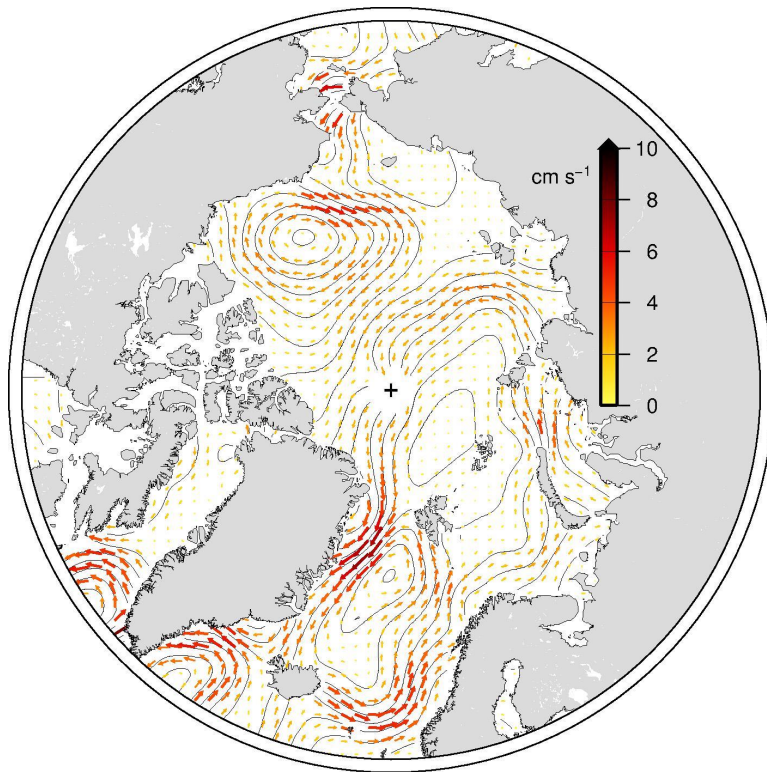


Figure S1: The 2011-2014 Arctic mean geostrophic currents and the associated DOT (contours drawn at 5cm intervals. The additional noise above $\sim 84^\circ\text{N}$ is noise in the GOCO03s geoid model owing to the orbital inclination of GOCE (96.7°).

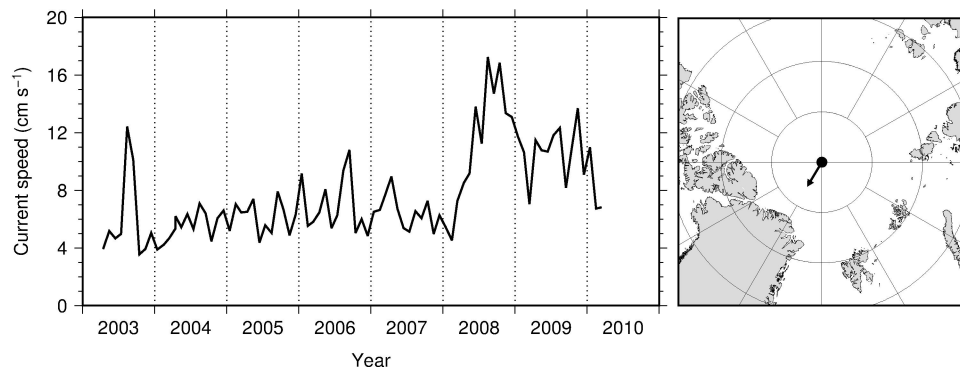


Figure S2: The current speed recorded in the upper 20m of the water column by an ADCP mounted on the North Pole Environmental Observatory mooring between 2003 and 2010. The map shows the location of the mooring (black circle) and the mean current direction during the period (black arrow).

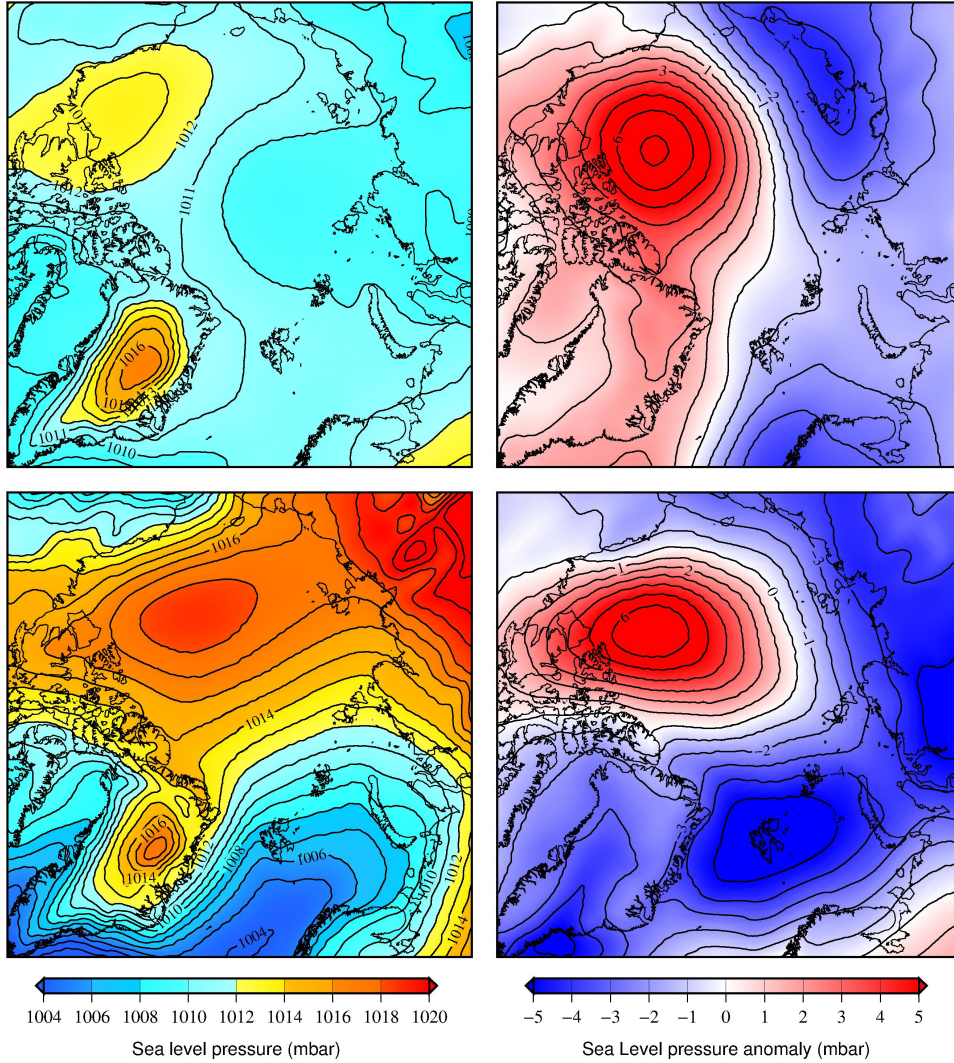


Figure S3: Top left: the 2000-2009 JAS sea level pressure (SLP) climatology and top right: the 2007 JAS SLP anomaly. Bottom left: the 2000-2009 OND sea level pressure climatology and bottom right: the 2007 OND SLP anomaly. SLP data are taken from ERA-Interim reanalysis.