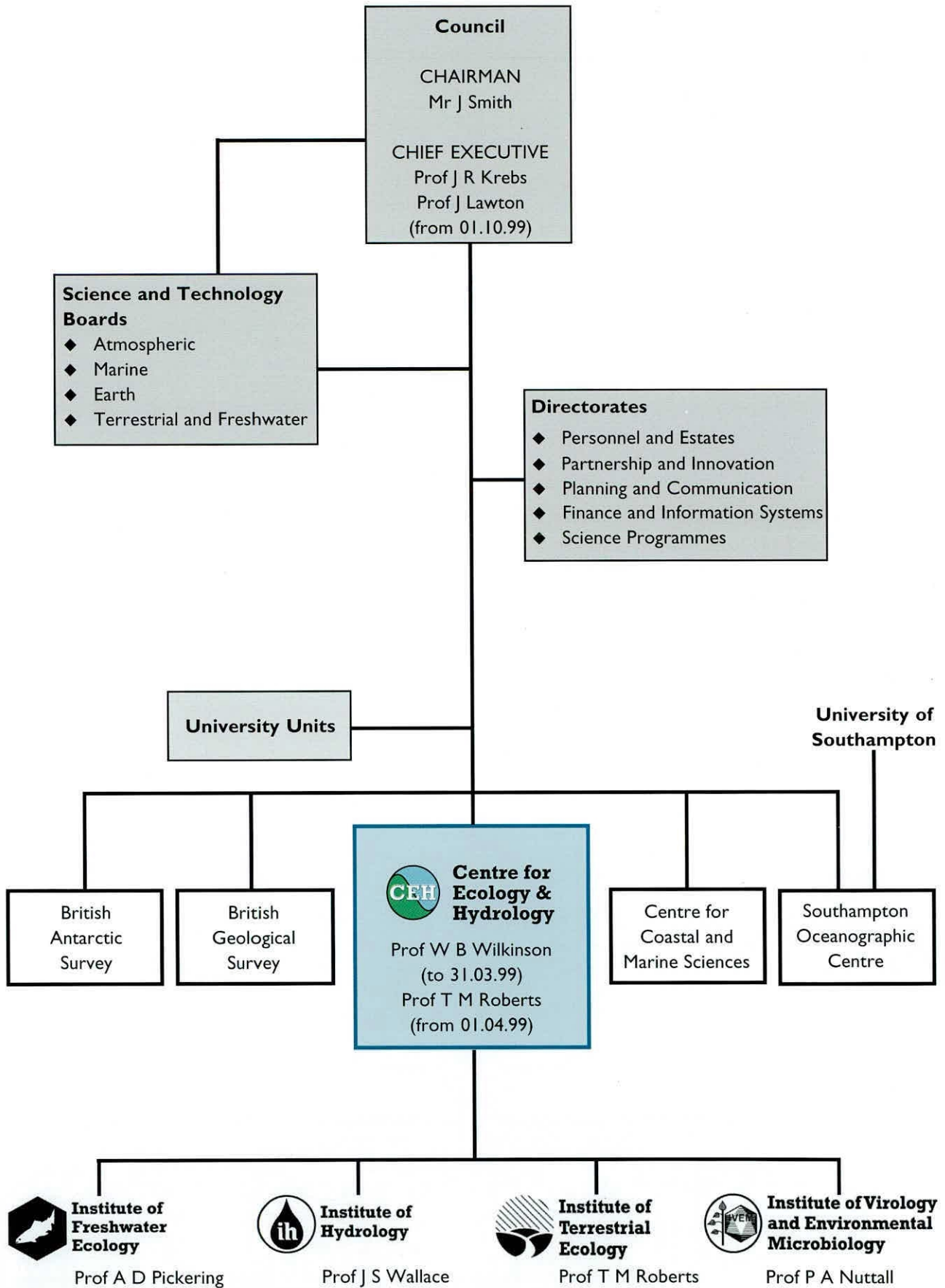


APPENDICES

APPENDIX 1: NERC STRUCTURE	85
APPENDIX 2: CEH ORGANISATION	86
APPENDIX 3: MEMBERSHIP OF PROGRAMME REVIEW GROUPS	88
APPENDIX 4: CEH SCIENCE PROGRAMME	89
APPENDIX 5: INSTITUTE'S CONTRIBUTION TO INTEGRATING FUND PROJECTS	94
APPENDIX 6: CEH REPRESENTATION ON KEY EXTERNAL SCIENTIFIC & DECISION-MAKING COMMITTEES	95
APPENDIX 7: MAJOR SOURCES OF INCOME FOR CEH INSTITUTES	100
APPENDIX 8: NEW CEH STRUCTURE & REPORTING LINES	102
APPENDIX 9: NEW MANAGEMENT STRUCTURE	103

APPENDIX I: NERC STRUCTURE



APPENDIX 2: CEH ORGANISATION

Director
Management Board

Prof W B Wilkinson
Prof W B Wilkinson, Director CEH (until 31.3.99)
Prof T M Roberts, Director CEH (from 01.04.99) and Deputy Director CEH (until 31.03.99)
Prof T M Roberts, Director, Institute of Terrestrial Ecology
Prof A D Pickering, Director, Institute of Freshwater Ecology
Prof J S Wallace, Director, Institute of Hydrology
Prof P A Nuttall, Director, Institute of Virology & Environmental Microbiology
Mr P Williams, Head of Administration, CEH
Dr J C Metcalfe, Head of Science Policy (Secretary)

As at October 1999 the number of staff stood at 640 (plus approximately 200 students and visiting scientists)



DIRECTORATE
Monks Wood
Abbots Ripton
Huntingdon, Cambs PE17 2LS
Tel: 01487 773381
Fax: 01487 773590

Director **Prof W B Wilkinson**
(until 31.03.99 at Wallingford)
Director **Prof T M Roberts**
(from 01.04.99)

Administration
Head of Administration
Finance Officer/Deputy Head of Admin
Contracts Officer
Administration
Director's Secretary

Mr P Williams (based at NERC Swindon & Wallingford)
Mrs H M Wood
Ms L A Aspinall
Mrs A M Davies
Mrs K Vann (until 23.07.99)

Science and Marketing
Science policy and co-ordination
Marketing and science administration
Publicity / Information Officer
GCTE Project Office

Dr J C Metcalfe
Dr W D Graham (until 15.12.98)
Mrs E A Ginbey (until 05.10.99)
Mr J I Ingram

Technical
Head of CEH Computing Services
Safety Auditor

Mr R Parsell (based at ITE Monks Wood)
Mr C Hankinson (based at ITE Merlewood)

Staff 34



INSTITUTE OF FRESHWATER ECOLOGY
Windermere Laboratory
Far Sawrey, Ambleside
Cumbria LA22 0LP
Tel: 015394 42468
Fax: 015394 46914

Director **Prof A D Pickering**
Deputy Director **Prof J Hilton**
Chief Executive FBA **Dr R Sweeting**
Head of Fish Biology Division **Prof J M Elliott**
Head of Microbial Ecology Division **Prof B J Finlay**
Head of Aquatic Processes Division **Dr E W Tipping**
Head of Ecosystem Management Division **Prof J Hilton**

The River Laboratory
East Stoke
Wareham
Dorset BH20 6BB
Tel: 01929 462314
Fax: 01929 462180
Prof J Hilton

Edinburgh Laboratory
Bush Estate
Penicuik
Midlothian EH26 0QB
Tel: 0131 445 4343
Fax: 0131 445 3943
Dr L May

Staff 96



INSTITUTE OF HYDROLOGY
 Crowmarsh Gifford
 Wallingford,
 Oxon OX10 8BB
 Tel: 01491 838800
 Fax: 01491 692424

Director **Prof J S Wallace**
 Deputy Director **Mr F M Law**
 Head of Information & Scientific Services **Mr F M Law**
 Head of Water Quality Division **Dr A Jenkins**
 Head of Biophysical Processes Division **Dr J H C Gash**
 Head of Resources & Environment Division **Dr A Gustard**
 Head of Risks & Extremes Division **Dr D W Reed**

Staff 166



INSTITUTE OF TERRESTRIAL ECOLOGY
Monks Wood
 Abbots Ripton
 Huntingdon, Cambs PE17 2LS
 Tel: 01487 773381
 Fax: 01487 773590

Director **Prof T M Roberts**

Monks Wood
 Administration Headquarters
 Abbots Ripton
 Huntingdon, Cambs PE17 2LS
 Tel: 01487 773381
 Fax: 01487 773467
Prof B K Wyatt

Furzebrook Research Station
 Wareham
 Dorset
 BH20 5AS
 Tel: 01929 551518
 Fax: 01929 551087
Prof A J Gray

Merlewood Research Station
 Windermere Road
 Grange over Sands
 Cumbria LA11 6JU
 Tel: 015395 32264
 Fax: 015395 34705
Prof M Hornung

Banchory Research Station
 Hill of Brathens, Glassel
 Banchory
 Kincardineshire AB3 4BY
 Tel: 01330 823434
 Fax: 01330 823303
Prof S D Albon

Edinburgh Research Station
 Bush Estate
 Penicuik
 Midlothian EH26 0QB
 Tel: 0131 445 4343
 Fax: 0131 445 3943
Prof M G R Cannell

Bangor Research Unit
 University of Wales,
 Bangor
 Gwynedd LL57 2UW
 Tel: 01248 370045
 Fax: 01248 355365
Prof J E G Good

Staff 278



INSTITUTE OF VIROLOGY &
 ENVIRONMENTAL MICROBIOLOGY
Mansfield Road
 Oxford OX1 3SR
 Tel: 01865 281630
 Fax: 01865 281696

Director **Prof P Nuttall**

Staff 66

APPENDIX 3: MEMBERSHIP OF CEH PROGRAMME REVIEW GROUPS

LAND AND WATER RESOURCES

CEH Programmes

1. Soil & soil-vegetation interactions
2. Land use science
3. The urban environment
4. Freshwater resources

Prof H S Wheeler (Chair)

Dr A M C Edwards
Prof K Killham
Prof R H Marrs
Dr J Mulder
Prof G E Petts

Engineering hydrology
Water quality
Soil microbiology
Land
Soil-water science
Land/river interactions,
ecology

Imperial College London
Environment Agency, Leeds
University of Aberdeen
University of Liverpool
NISK, Norway
University of Birmingham

BIODIVERSITY

CEH Programmes

5. Biodiversity
6. Pests and disease control

Prof C C Payne (Chair)

Prof V K Brown
Prof C Gliddon
Prof D A Ritchie
Prof M B Usher
Prof K Vickerman FRS

Virus biotechnology
Invertebrates
GMOs
Microbial genetics
Ecology
Zoology

University of Reading
CABI
University of Wales, Bangor
University of Liverpool
Scottish Natural Heritage
University of Glasgow

POLLUTION, RISKS AND ENVIRONMENTAL CHANGE

CEH Programmes

7. Pollution
8. Environmental risks
9. Global change

Prof J A Lee (Chair)

Dr C W Anderson
Prof C Cunnane
Prof J Grace
Prof C H Walker

Pollution
Statistics
Flood hydrology
Climate change
Ecotoxicology

University of Sheffield
University of Sheffield
University of Galway
University of Edinburgh
University of Reading

MONITORING, DATA, ASSESSMENT, VALUATION

CEH Programme

10. Integrating generic science

Dr J C Rodda (Chair)

Prof T A Burke
Prof P J Curran
Dr R H Haines-Young
Mr J Murliss
Prof C Perring
Dr P A S Rae

Hydrology
Genetic fingerprinting
Remote sensing
GIS
Atmospheric pollution
Environmental economics
Environmental planning

President of IAHS
University of Leicester
University of Southampton
University of Nottingham
University College London
University of York
British Gas

APPENDIX 4: CEH SCIENCE PROGRAMME

PROGRAMME 1: SOIL AND SOIL/VEGETATION INTERACTIONS

Programme Leader: Professor Mike Hornung

- Theme 1.1 Physicochemical processes affecting soil-water interactions
Co-ordinator: Ed Tipping, IFE
- Issue 1.1.1 Solid-solution partitioning of chemical species
Issue 1.1.2 Organic matter decomposition and the production of humic substances
Issue 1.1.3 Mineral weathering
Issue 1.1.4 Integration of soil processes
- Theme 1.2 Biologically mediated soil processes
Co-ordinator: Phil Ineson, ITE
- Issue 1.2.1 Activity and diversity of key functional populations
Issue 1.2.2 Trophic interactions in soils and their influence on soil organic matter turnover
Issue 1.2.3 Manipulation of soil populations
- Theme 1.3 Physical and physiological processes controlling soil water balances
Co-ordinator: John Roberts, IH
- Issue 1.3.1 Soil-root interactions at the individual plant root and stand scale
Issue 1.3.2 Soil-plant-atmosphere flux transfers in mixed vegetation
Issue 1.3.3 Root-soil-water interactions adjacent to fluctuating water tables

PROGRAMME 2: LAND USE SCIENCE

Programme Leader: Dr Mark Robinson

- Theme 2.1 Long term land use monitoring and experimental studies
Co-ordinator: Bob Bunce, ITE
- Issue 2.1.1 National scale survey of land use and cover
Issue 2.1.2 Remote sensing of land use and cover
Issue 2.1.3 Monitoring and evaluation of land use policies
Issue 2.1.4 International scale land use survey and monitoring
- Theme 2.2 Land use systems
Co-ordinator: Robin Hall, IH
- Issue 2.2.1 Environmental impacts and management of farming systems
Issue 2.2.2 Environmental impacts and management of forestry systems
Issue 2.2.3 Impacts of land use (change and management)
Issue 2.2.4 Development of land use and water resource management strategies
Issue 2.2.5 Environmental impact, coastal zone survey and management
- Theme 2.3 Management of ecosystems in tropical regions
Co-ordinator: Julia Wilson, ITE
- Issue 2.3.1 Management and restoration of forests and drylands
Issue 2.3.2 Agroforestry
- Theme 2.4 Landscape function and modelling
Co-ordinator: Les Firbank, ITE
- Issue 2.4.1 Modelling spatial processes
Issue 2.4.2 Applied landscape ecology
Issue 2.4.3 Integrated modelling of land use processes including social and economic variable

PROGRAMME 3: THE URBAN ENVIRONMENT

Programme Leader: Professor John Good

- Theme 3.1 Patterns of urban land/water use and associated habitats
Co-ordinator: Tony Harrison, ITE
- Issue 3.1.1 Pattern and distribution of urban habitats in relation to past and present land/water use
Issue 3.1.2 Biological characterisation of urban soils
Issue 3.1.3 Biogeochemical survey of urban soils, sediments and waters
Issue 3.1.4 Physical properties of urban soils

- Theme 3.2** Factors and processes determining the development of urban environments
Co-ordinator: Ragab Ragab, IH
- Issue 3.2.1 Understanding soil processes
Issue 3.2.2 Urban impacts on hydrological processes
Issue 3.2.3 Aquatic ecosystem function
Issue 3.2.4 Terrestrial ecosystem function
- Theme 3.3** The distribution and dynamics of atmospheric pollution
Co-ordinator: Neil Cape, ITE
- Issue 3.3.1 Measurement of transport, chemistry and deposition of gases/particles in urban environments
Issue 3.3.2 Reaction chemistry of primary pollutants close to source
Issue 3.3.3 Development of novel sensors for small-scale spatial heterogeneity
Issue 3.3.4 Measurement of direct effects of hydrocarbons on vegetation
Issue 3.3.5 Urban sources/sinks of radioactive pollutants
- Theme 3.4** Urban Water Dynamics, risk and hazard
Co-ordinator: John Packman, IH
- Issue 3.4.1 Low flows and pollution loads
Issue 3.4.2 Floods and pollution flushes
Issue 3.4.3 Surface-groundwater interactions
Issue 3.4.4 Risk and hazard
- Theme 3.5** Sustainability, restoration and remediation of urban ecosystems
Co-ordinator: Patrick Armitage, IFE
- Issue 3.5.1 Collation of information on restoration and remediation requirements
Issue 3.5.2 Ecotypic selection and genetic engineering
Issue 3.5.3 Exploitation of soil processes
Issue 3.5.4 Sustainable water management

PROGRAMME 4: FRESHWATER RESOURCES

Programme Leader: Dr Stephen Maberly

- Theme 4.1** Surface-groundwater interactions
Co-ordinator: Ann Calver, IH
- Issue 4.1.1 The recharge-runoff division
Issue 4.1.2 The river-aquifer boundary and floodplain issues
Issue 4.1.3 Wetland interactions
Issue 4.1.4 Integrated catchment scale analysis
- Theme 4.2** Regional modelling of resource availability
Co-ordinator: Andrew Young, IH
- Issue 4.2.1 Estimation of resource availability at ungauged sites
Issue 4.2.2 Drought frequency estimation
Issue 4.2.3 Estimation of drought frequency from non-stationary data
- Theme 4.3** Water resource modelling
Co-ordinator: Bob Moore, IH
- Issue 4.3.1 Water resource management studies
Issue 4.3.2 Methodological developments
Issue 4.3.3 Risk analysis and decision support systems
Issue 4.3.4 Advances through special monitoring
- Theme 4.4** Water quality
Co-ordinator: David Boorman, IH
- Issue 4.4.1 Monitoring and assessment
Issue 4.4.2 Understanding processes
Issue 4.4.3 Development and application of models
Issue 4.4.4 Management, planning and decision support
- Theme 4.5** Integrated biotic response modelling
Co-ordinator: Tony Bailey-Watts, IFE
- Issue 4.5.1 Flow resistance in channels and river ecosystems health
Issue 4.5.2 Integration of models of water quantity, quality and biotic variability
Issue 4.5.3 Improvement and diversification of biotic models
Issue 4.5.4 Biotic responses to environmental change
Issue 4.5.5 Capitalising on the evolving knowledge base
- Theme 4.6** Fish Dynamics
Co-ordinator: Mike Ladle, IFE
- Issue 4.6.1 Fish population dynamics

Issue 4.6.2	Acoustic deflection and counting of migratory smolts
Issue 4.6.3	Determination of habitat requirement
Issue 4.6.4	Physiological performance of freshwater fish
Issue 4.6.5	Fish performance models

PROGRAMME 5: BIODIVERSITY AND POPULATION PROCESSES

Programme Leader: Professor Steve Albon

Theme 5.1	Biodiversity characterisation, pattern and monitoring <i>Co-ordinator: Jon Bass, IFE</i>
Issue 5.1.1	Species richness in relation to environmental factors
Issue 5.1.2	Biodiversity of communities and resilience to environmental change
Theme 5.2	Ecosystem function and biodiversity <i>Co-ordinator: Bland Finlay, IFE</i>
Issue 5.2.1	Trophic interactions and ecosystems function
Issue 5.2.2	Role of microbial diversity and dynamics with respect to ecosystem function
Theme 5.3	Population processes underlying biodiversity <i>Co-ordinator: John Goss-Custard, ITE</i>
Issue 5.3.1	Organism responses, fitness and demographic functions
Issue 5.3.2	Interactions between demes, local populations and meta-populations
Issue 5.3.3	Interactions between populations of different species
Issue 5.3.4	Comparative population and community processes
Theme 5.4	Conservation and restoration of biodiversity <i>Co-ordinator: Mark Hill, ITE</i>
Issue 5.4.1	Single species conservation programmes: monitoring and evaluation
Issue 5.4.2	Ecology of introduced species
Issue 5.4.3	Habitat creation and restoration
Issue 5.4.4	Wetland management and restoration

PROGRAMME 6: PEST AND DISEASE CONTROL AND RISK ASSESSMENT FOR GMOs

Programme Leader: Professor Bob Possee & Dr Jenny Cory (from summer 1999)

Theme 6.1	The development of sustainable insect pest management strategies <i>Co-ordinator: Jenny Cory, IVEM</i>
Issue 6.1.1	Population dynamics of pests of exotic plants in the UK
Issue 6.1.2	Use of plant resistance in pest management
Issue 6.1.3	Understanding the role of pathogens in insect population dynamics
Issue 6.1.4	Ecological impact of microbial control agents for disease vectors
Issue 6.1.5	Development of genetically modified bioinsecticides
Theme 6.3	Environmental impact of GMOs and potentially invasive species <i>Co-ordinator: Alan Raybould, ITE</i>
Issue 6.3.1	Environmental impact of genetically modified and introduced plants
Issue 6.3.2	Environmental impact of genetically modified viruses and introduced pathogens
Issue 6.3.3	Development and risk assessment of genetically modified bacteria
Theme 6.4	Understanding and controlling arthropod-transmitted diseases <i>Co-ordinator: Pat Nuttall, IVEM</i>
Issue 6.4.1	Vector-host interactions
Issue 6.4.2	Pathogen-host interactions
Issue 6.4.3	Pathogen-vector interactions
Issue 6.4.4	Pathogen-host-vector interactions
Theme 6.5	Distribution of pathogens in freshwater <i>Co-ordinator: Roger Pickup, IFE</i>
Issue 6.5.1	Monitoring and risk assessment of pathogens in freshwater
Issue 6.5.2	Development of novel methods for detecting viruses in water

PROGRAMME 7: POLLUTION

Programme Leader: Dr Stuart Dobson

Theme 7.1	Radionuclides <i>Co-ordinator: Brenda Howard, ITE</i>
Issue 7.1.1:	Parameterisation of radionuclide contamination and transfer
Issue 7.1.2	Incorporation of spatial variability

Issue 7.1.3	Improving estimation of radiation doses
Issue 7.1.4	Development of countermeasures
Issue 7.1.5	Collaboration
Theme 7.2	Acidifying pollutants
	<i>Co-ordinator: Alan Jenkins, IH</i>
Issue 7.2.1	Emissions
Issue 7.2.2	Atmospheric chemistry and transformations
Issue 7.2.3	Deposition
Issue 7.2.4	Impacts on soil-plant systems
Issue 7.2.5	Surface water and catchment scale impacts
Issue 7.2.6	Modelling
Issue 7.2.7	Critical loads
Theme 7.3	Photochemical oxidants
	<i>Co-ordinator: Neil Cape, ITE</i>
Issue 7.3.1	Atmospheric transformations and transport
Issue 7.3.2	Emission, deposition and concentration fields
Issue 7.3.3	Impacts on vegetation, materials and human health
Theme 7.4	Toxic metals
	<i>Co-ordinator: Stuart Dobson, ITE</i>
Issue 7.4.1	Transport and deposition
Issue 7.4.2	Soil and aquatic processes and soil plant transfers
Issue 7.4.3	Transfer to animals
Issue 7.4.4	Ecotoxicology and environmental standards
Theme 7.5	Organic pollutants
	<i>Co-ordinator: Alan House, IFE</i>
Issue 7.5.1	Monitoring
Issue 7.5.2	Transport and food-chain transfer
Issue 7.5.3	Biological degradation and transformation
Issue 7.5.4	Physico-chemical processes controlling transport in soils and waters
Issue 7.5.5	Catchment-scale processes
Issue 7.5.6	Ecotoxicology and environmental standards

PROGRAMME 8: ENVIRONMENTAL RISKS AND EXTREME EVENTS

Programme Leader: Mr Bob Moore

Theme 8.1	Risk assessment and estimation of floods and other extreme events
	<i>Co-ordinator: Duncan Reed, IH</i>
Issue 8.1.1	Mainstream research
Issue 8.1.2	Generic solutions to a joint probability problem
Issue 8.1.3	Collective risk for environmental extremes
Issue 8.1.4	Continuous simulation modelling for flood estimation
Issue 8.1.5	Detection of trend and other non-stationary behaviour in time-series of environmental extremes
Theme 8.2	Real-time flow and water quality forecasting and decision support systems
	<i>Co-ordinator: Bob Moore, IH</i>
Issue 8.2.1	Methodological developments
Issue 8.2.2	Forecasting systems
Issue 8.2.3	Advances through special monitoring
Issue 8.2.4	Real-time water quality forecasting and decision support
Theme 8.3	Understanding and modelling the role of rare events on ecological systems
	<i>Co-ordinator: James Bullock, ITE</i>
Issue 8.3.1	Rare events and ecological processes

PROGRAMME 9: GLOBAL CHANGE

Programme Leader: Professor Melvin Cannell

Theme 9.1	Greenhouse gas budgets and cycles
	<i>Co-ordinator: David Fowler, ITE</i>
Issue 9.1.1	Global atmospheric CO ₂ monitoring
Issue 9.1.2	Controls of net CO ₂ and water/energy fluxes in Amazonia
Issue 9.1.3	Net CO ₂ fluxes for UK vegetation and soil
Issue 9.1.4	Exchange mechanisms in high-latitude wetlands
Issue 9.1.5	Greenhouse gas emissions for the whole UK
Issue 9.1.6	Soil sinks of methane
Issue 9.1.7	Mid-latitude sources of N ₂ O and NO



- Theme 9.2 Land-atmosphere-ocean interactions
Co-ordinator: Richard Harding, IH
- Issue 9.2.1 Improved hydrological representations within GCMs
- Issue 9.2.2 Land surface/climate interaction: tropical deforestation and desertification
- Issue 9.2.3 Snow-melt and routing models for northern latitudes
- Issue 9.2.4 Dynamic ecosystem models for GCMs

- Theme 9.3 Forecasting and detecting the impacts of global change
Co-ordinator: Nick Reynard, IH
- Issue 9.3.1 Downscaling and predicting hydrological and water quality impacts
- Issue 9.3.2 Impacts on the distribution, abundance and behaviour of species and communities
- Issue 9.3.3 Impacts on the pools and fluxes of carbon and nutrients in ecosystems
- Issue 9.3.4 Using CEH databases to detect climate change impacts

PROGRAMME 10: INTEGRATING GENERIC SCIENCE

Programme Leader: Professor John Hilton

- Theme 10.1: Environment and society
Co-ordinator: John Sheail, ITE
- Issue 10.1.1 Environmental assessment
- Issue 10.1.2 Environment, economics and society
- Issue 10.1.3 Environmental history and policy
- Theme 10.2 Remote sensing
Co-ordinator: Barry Wyatt, ITE
- Issue 10.2.1 Development, calibration and validation of remote sensing systems and data products
- Issue 10.2.2 Algorithms and models for estimation of biophysical variables
- Issue 10.2.3 Use of remote sensing for distributed hydrological and ecosystem modelling
- Issue 10.2.4 Generic data products from Earth observation
- Issue 10.2.5 Infrastructure and facilities
- Theme 10.3 Instrumentation
Co-ordinator: Martin Rouen, IFE
- Issue 10.3.1 Intelligent sensor clusters
- Theme 10.4 Biotechnology Development
Co-ordinator: Ian Jones, IVEM
- Issue 10.4.1 Virus replication
- Issue 10.4.2 Structure/function relationships of viral proteins
- Issue 10.4.3 Molecular technology collaboration across CEH
- Theme 10.5 Analytical chemistry
Co-ordinator: Phil Rowland, ITE
- Issue 10.5.1 The development of analytical instrumentation for applications in environmental research.
- Issue 10.5.2 Development and evaluation and standardisation of analytical methods in ecology
- Issue 10.5.3 Characterisation and modelling of chemicals in environmental materials
- Theme 10.6 Databases and reference collections
Co-ordinator: Terry Parr, ITE
- Issue 10.6.1 Integrity and accessibility of databases and collections within CEH
- Issue 10.6.2 Monitoring environmental change
- Issue 10.6.3 Environmental management
- Issue 10.6.4 Microbial diversity
- Theme 10.7 Biometrical Applications, Research and Development
Co-ordinator: P Rothery, ITE
- Issue 10.7.1 Biometrical collaboration
- Issue 10.7.2 Application and development of biometrical methods
- Issue 10.7.3 Statistical training

APPENDIX 5: INSTITUTE'S CONTRIBUTION TO INTEGRATING FUND PROJECTS

Round 1 (1995/96 - 1998/99)	IFE	IH	ITE	IVEM
The microbial basis of methane (CH ₄) oxidation in soils	◆		◆	◆
Microbial diversity and ecosystem function - Phase I	◆		◆	◆
Interactions of viruses, aphids and wild Brassica (extended for a further year)			◆	◆
Combined growth and water use modelling of mixed vegetation		◆	◆	
Molecular genetics & process-level events in the biodegradation of xenobiotics in rhizosphere soils			◆	◆
Modelling the chemical availability of radionuclides in upland organic soils (extended for a further year)	◆		◆	
Upland forest closure - its significance for chemistry, ecology & hydrology	◆	◆	◆	

Round 2 (1996/97 - 1999/00)	IFE	IH	ITE	IVEM
The role of seabirds in the epizootiology of Lyme Disease			◆	◆
Combined hydro-ecological and socio-economic models of land use, land management & environmental degradation (CHASM)	◆	◆	◆	
The environmental characteristics of urban environments	◆	◆	◆	◆
Microbial diversity and ecosystem function - Phase II	◆		◆	
Modelling the transport and fate of viruses in the aquatic environment		◆		◆

Round 3 (1997/98 - 2000/01)	IFE	IH	ITE	IVEM
Directly monitoring gene activity during periods of environmental change			◆	◆
Modelling, risk estimation & management of ecological systems subject to natural hazards	◆	◆	◆	
Development of a catchment scale model of phosphorus sources movement and fluxes	◆	◆	◆	

Round 4 (1998/99 - 2001/02)	IFE	IH	ITE	IVEM
The genetics and ecology of salmon decline in chalk streams	◆		◆	
The population dynamics of fragmented-plant-insect pathogen systems: Implications for sustainable pest management			◆	◆
Development of an integrated hydro-ecological model (IHEM) for global change research		◆	◆	
Bio-energetic response to habitat by salmon and brown trout juveniles	◆	◆		
Spatial variability of interacting biological and hydrological processes in the Arctic		◆	◆	

Round 5 (1999/00 - 2002/03)	IFE	IH	ITE	IVEM
Integrating wetland management, catchment hydrology and ecosystem functions		◆	◆	
The effects of environmental radioactivity on soil health			◆	◆
Investigating the intrinsic ability of microbial communities to degrade organic pollutants in groundwater	◆	◆		◆
The hydrochemistry of organic soils	◆	◆	◆	
Dynamic processes in the marginal zone of urban rivers	◆	◆	◆	
Spatially explicit demography and predation of radio-tagged fish	◆		◆	
Development and analysis of an efficient Earth System Model		◆	◆	



APPENDIX 6: CEH REPRESENTATION ON KEY EXTERNAL SCIENTIFIC & DECISION-MAKING COMMITTEES

COMMITTEE

CEH REPRESENTATIVES

UK MAJOR LEARNED SOCIETIES

Botanical Society of the British Isles	Dr C D Preston	
Botanical Society of the British Isles	Mrs J Croft	
British Arachnological Society	Mr R G Snazell	
British Bryological Society	Prof M O Hill	
British Ecological Society	Dr B A Emmett	
British Ecological Society	Dr J M Bullock	
British Ecological Society, Symposia Editor	Prof N R Webb	
British Ecological Society		
- Council	Dr S Hartley	
- Meetings Committee	Prof N R Webb	
- Meetings Committee	Dr S Hartley	
- Publications Committee	Prof S D Albon	
- Public Affairs Committee	Dr D Osborn	
British Hydrological Society	Mr F M Law	President
British Hydrological Society	Mrs C Kirby	
British Mycology Society	Dr J C Frankland	
British Ornithologists Union	Prof I Newton	President Elect
BTO Science Advisory Committee	Dr L G Firbank	
British Society for Soil Science	Prof M Hornung	
Executive Committee of the Tropical Agriculture Assoc	Mr H M Gunston	
Fisheries Society of the British Isles	Dr I J Winfield	
Institute of Biology Environment Committee	Prof N R Webb	
Mammal Society, Conference Secretary	Dr R Shore	
Royal Entomological Society	Dr J A Thomas	
Royal Entomological Society	Dr A Watt	
Royal Meteorological Society	Prof D Fowler	Vice President
Royal Society	Prof I Newton	Fellow
Royal Society for the Protection of Birds	Prof I Newton	
- Council Member	Prof I Newton	
- Conservation Committee	Prof I Newton	Chairman
Royal Society of Edinburgh	Prof M G R Cannell	
Royal Society of Edinburgh	Prof I Newton	
Royal Society for Tropical Medicine & Hygiene	Prof P A Nuttall	
Society of General Microbiology	Dr E A Gould	
- Environmental Microbiology Group	Dr M J Bailey	
- Virology Committee	Dr I M Jones	
Society for General Microbiology	Prof R D Possee	Editor
Zoological Society of Lond, Awards Committee	Prof I Newton	
UK GOVERNMENT DEPARTMENT AND OTHER PUBLIC SECTOR		
Advisory Committee for Genetic Modification	Prof T M Roberts	
Advisory Committee for Hazardous Substances	Prof T M Roberts	
Advisory Committee on Pesticides	Prof T M Roberts	
Advisory Committee on Releases to the Environment	Prof A J Gray	Acting Chairman
Advisory Committee on Toxic Substances	Dr S Dobson	
Atlas 2000 Steering Group	Dr C Preston	
Atlas 2000 Steering Group	Mr P T Harding	
Biodiversity Action Plan - Field Margins Subgroup	Dr L G Firbank	
BBSRC Microbial Genomics Working Party	Dr M J Bailey	
BNSC Earth Observation Link Programme Management Committee	Dr J Hinton	Co-Ordinator
Climate Change Review Group	Prof M G R Cannell	
Critical Loads Advisory Group	Prof T W Ashenden	

Critical Loads Advisory Group	Prof D Fowler	
Critical Loads Advisory Group	Dr A Jenkins	
Critical Loads Advisory Group	Prof M Hornung	
DETR		
- Biodiversity Action Plan Steering Groups	Dr M Marquiss	
- Biodiversity Information Group	Prof T M Roberts	
- Biodiversity Steering Group	Prof T M Roberts	
- Working Group on Birds of Prey	Prof I Newton	
- Working Group on Endocrine Disruptors	Dr A S Dawson	
DETR Technical Committee on Detergent and the Environment	Dr W A House	
DETR AATSR Programme Steering Panel	Dr J Hinton	
DETR NEGTA	Prof K Bull	
DOH Review Panel for CAMR - Expert Adviser	Dr E A Gould	
DOH UKXIRA Advisory Panel (Xenotransplantation)	Dr E A Gould	
DTI/MAFF Horticulture Link Programme Management Committee	Dr J I Cooper	
DfID Environment Research Programme Science Committee	Prof T M Roberts	
DTI Queens Award Panel I	Prof J Sheail	
Environment Agency		
Area Environment Group (Northern Area)	Prof A D Pickering	
Client Board, National Centre for Environmental Data & Surveillance	Prof B K Wyatt	
- Regional Fisheries Ecology and Recreation Advisory Committee (NW Region)	Dr I J Winfield	
Humber Scientific Advisory Group		
River Habitat Survey - EA Projects Board		
EA/FWR Eutrophication Forum	Mr G J L Leeks	
EPSRC Waste & Pollutions Management Steering Committee	Dr F H Dawson	
Flood Estimation Handbook Advisory Group	Prof C S Reynolds	
Food and Agricultural Countermeasures Group	Dr D Osborn	
Foresight DTI/OST Agriculture, Horticulture Forestry Panel	Dr D W Reed	
HSE ACDP Committee	Dr B J Howard	
HSE ACGM Technical Committee	Dr J I Cooper	
Health & Safety Ad Hoc Working Group on Bats and Remedial Timber Treatment	Dr E A Gould	
House of Commons Committee on Usage of Sludge on the Land	Mr F M Law	Chair
Interdepartmental Committee for Hydrology	Mr P T Harding	
JNCC International Designations Group	Dr S Wanless	
JNCC Seabird Monitoring Committee	Prof M Harris	
JNCC Seabird Monitoring Committee	Dr S Wanless	
JNCC Seabird 2000 Steering Committee	Prof I Newton	
JNCC - Steering Group on Red Kite Reintroduction		
LINK Programme Management Committee - Biological Treatment of Soil and Water (NERC)	Dr M J Bailey	
MAFF/EA Estuaries Advisory Group	Mr G J L Leeks	
MAFF/HSE Advisory Committee on Pesticides	Dr S Dobson	
NERC EDGE Programme Steering Committee	Dr R S Hails	
	& Prof A J Gray	
NERC Freshwater Sciences Peer Review Committee	Mr G J L Leeks	
NERC Land-Ocean Interaction Study (LOIS) Steering Committee	Mr G J L Leeks	Science Co-ordinator
NERC Soil Biodiversity Programme Steering Committee	Pr M Hornung	
	& Mr R Scott	
NERC Terrestrial Sciences Research Grants and Training Committee	Dr P Ineson	
ERC Terrestrial Sciences Research Grants and Training Awards Committee	Dr M J Bailey	
Radioactivity Research and Environment Monitoring Committee	Dr B J Howard	

UK OTHER

AGI Environmental Speciality Interest Group	Mr N J Brown	Chair
BSI Biological Methods Committee	Dr P D Armitage	



BSI – Technical Panel on Sediment Transport
 BSI Working Group on Soil Water
 British Consultants Bureau - Water Engineering Committee
 British Trust for Ornithology
 - Estuaries Advisory Panel
 - Population Monitoring Advisory Panel
 - Ringing Committee
 - Science Advisory Committee
 - Unconventional Marking Panel
 Butterfly Conservation Society
 Butterfly Conservation Society
 Centre for Earth and Atmospheric Sciences Committee
 Conservation Research Committee, Institute of Zoology
 Advisory Committee (Wales)
 Environment Agency Regional Environment Protection
 Executive Committee, Linking Environment & Farming
 Field Studies Council
 Forestry Commission Regional Advisory Committee (Wales)
 Institute of Irrigation and Development Studies Advisory Board
 IGBP UK National Committee
 Joint Committee for Conservation of British Invertebrates
 Joint Committee for Conservation of Large Blue
 Land Use Research Co-ordination Committee
 Monitoring Committee, Shetland Oil Terminal
 Environmental Assessment Group
 Moors River Standing Committee
 National Biodiversity Network
 National Biodiversity Network
 Natural History Museum - Advisory Board to the Identification
 Qualification (IdQ) Scheme
 OFWAT CSC for the North West
 Photochemical Oxidants Review Group
 Realising Our Potential Awards (ROPA) Panel
 Steering Committee, Centre for the Study of Environmental
 Change and Sustainability
 SCALE Aquaculture Project Advisory Committee
 SOTEAG Monitoring Committee
 Scottish Natural Heritage, Moorland Working Group
 Terrestrial Sciences Peer Review Committee
 Terrestrial Sciences Peer Review Committee
 Terrestrial and Freshwater Sciences Board
 UK Federation of Culture Collection
 UK Irrigation Association
 UK National Committee for Biodiversity
 UK Plant Genetic Resources Group
 UKNCC
 University of Reading Plant Sciences Advisory Board
 Universities Weather Radar Network Committee
 Wildfowl and Wetlands Trust, Council

Mr G J L Leeks
 Mr J D Cooper
 Mr F A K Farquharson

Dr J D Goss-Custard
 Dr J D Goss-Custard
 Dr S Wanless
 Dr L G Firbank
 Prof M P Harris
 Dr J A Thomas
 Mr P T Harding
 Prof J S Wallace
 Dr J D Goss-Custard

Vice President

Prof J E G Good
 Dr L G Firbank
 Prof C S Reynolds
 Prof J E G Good
 Mr H M Gunston
 Prof B K Wyatt
 Dr M Telfer
 Dr J A Thomas
 Dr L G Firbank
 Prof M P Harris

Dr J F Wright
 Prof T M Roberts
 Mr P T Harding

Dr J F Wright
 Prof C S Reynolds
 Prof D Fowler
 Dr D Osborn

Chair

Prof M G R Cannell
 Mr G D Collett
 Dr S Wanless
 Prof I Newton
 Prof B K Wyatt
 Dr P Ineson
 Prof T M Roberts
 Dr J G Day
 Dr R Ragab
 Mr P T Harding
 Prof A J Gray
 Dr J G Day
 Prof A J Gray
 Prof J S Wallace
 Prof I Newton

EUROPEAN

EurAqua
 BIOTEX Subcommittee of Eurotrac
 Board of the European Forest Institute
 Council of Europe - Group of Experts on the Conservation of
 Invertebrates (Berne Convention)
 EC DG XII (Environment Space) Thematic Co-operation Group on Space
 Techniques in the Context of Major Hazards
 EC Science Directorate Training and Mobility Programme
 EC Science Directorate Training and Mobility Programme

Prof W B Wilkinson UK leader
 Prof D Fowler Chair
 Prof M G R Cannell

Mr P T Harding

Mr D S Biggin
 Dr J I Cooper
 Prof P A Nuttall

EC Standing Committee on Plant Health, invited expert/ consultant to
 Swedish National Chemicals Inspectorate
 EC Working Group on Ozone Strategy
 EEC Biostructure Groups
 EIFAC/ICES Working Group on Eels
 EIFAC Working Party on the Influence of Management
 Practices on the Environment
 EU Group of Experts on Demonstration in Life Sciences and
 Technologies, RTD Ivth Framework Programme
 EU TMR DIAS Large Scale Facility Selection Panel
 European Contaminated Land Research & Info Network
 European Committee of Chimeric Virus-like Particles
 Research Institute Network (CONNECT)
 European Geophysical Society - Natural Hazards Section
 European Heathland Network
 European Invertebrate Survey
 European Topic Centre on Land Cover
 European Topic Centre for Nature Conservation
 International Cooperative Programme on Effects of Air Pollution and
 other Stresses on Crops and Non-Wood Plants
 OECD Consultant (UK) - Working Party on Biotechnology,
 Steering Group on Scientific Technology Infrastructure
 (Support for Biological Resource Centres)
 Seabird Group
 UNESCO International Hydrological Programme FRIEND - N Europe

Dr M J Bailey
 Prof K R Bull
 Dr I M Jones
 Dr D Carss
 Dr I J Winfield

Dr M J Bailey
 Dr S Plummer
 Dr D Osborn
 Prof P Roy
 Prof T M Roberts
 Mr R J Moore
 Prof N R Webb
 Mr P T Harding
 Mr R M Fuller
 Dr D Moss

Chair
 Convenor

Dr G E Mills
 Chair

Dr M J Bailey
 Dr S Wanless
 Dr A Gustard
 Chair

INTERNATIONAL

Convention on Long Range Transboundary Air Pollution (CLRTAP)

- Executive Body
- Task Force on Mapping
- Working Group on Effects
- ICP - Vegetation

ESF Working Group on Long Term Research
 ESF Life and Environment Sciences Standing Committee
 European Heathland Network Convenor
 European Space Agency, ESA Specialists Panel
 GTOS Steering Committee

IAHS International Commission for Surface Water
 IAHS Programme Committee for IUGG 1999 Conference
 IAWQ UK National Committee

IDNDR UK National Co-ordinating Committee
 - Science Engineering and Technology Sub-Committee

IGBP, BAHC Committee
 IGBP, GCTE Focus 3 Committee

IGBP-DIS Global Land Cover Working Group
 International Association of Landscape Ecology - UK Section
 International Association for Vegative Science

International Commission on Irrigation and Drainage
 IUCN Cormorant Specialist Group

IUCN/SSC Freshwater Fish Specialist Group
 IUCN/SSC Invasive Species Specialist Group

IUCN Introductions Committee
 IUCN Invertebrate Conservation Task Force

IUCN Social Insect Conservation Specialist Group
 IUCN Wetlands Programme Advisory Committee

Intergovernmental Panel on Climate Change
 International Committee on Atmosphere-Soil-Vegetation Relations

International Committee of 100 for the International
 Ornithological Congress

International Committee for the Taxonomy of Viruses

Prof K R Bull
 Ms J Hall
 Prof K R Bull
 Dr G Mills
 Dr T Parr
 Prof S Albon
 Prof N R Webb
 Dr R Ragab
 Dr T Parr
 Dr A Gustard
 Prof W B Wilkinson
 Dr A Jenkins
 Dr A Gustard
 Mr F A K Farquharson
 Dr J H C Gash
 Dr J I Ingram
 Prof B K Wyatt
 Dr R G H Bunce
 Prof M O Hill
 Dr R Ragab
 Dr D Carss
 Dr I J Winfield
 Dr I J Winfield
 Dr J A Thomas
 Dr G W Elmes
 Dr G W Elmes
 Dr M C Acreman
 Prof M G R Cannell
 Prof J S Wallace
 Prof I Newton

Chair
 Chair
 Vice President

UK Rep

Vice-President

Prof P A Nuttall



- Advisory Panel
- Baculovirus Sub-Committee
- Comoviridae Subgroup
International Society for Avian Endocrinology - Scientific Committee
International Wildfowl Research Bureau - Waterfowl Ecology Working Group
International Union of Forestry Research Organisations
International Union of Radioecology
OECD Working Group on Avian Toxicity Testing
Peregrine Fund, North America, Board

Raptor Research Foundation
Society for Invertebrate Pathology
UNESCO MAB UK Committee
MAB – Man and biosphere – Northern Sciences Network
UNESCO Hydrology for the Environment Life and Policy (HELP) Task Force
UNESCO International Hydrological Programme - UK Committee
UNESCO International Hydrological Programme Project I, FRIEND
UNESCO Natural and Social Sciences Commission
WHO/FAO Joint Meeting on Pesticides - Core Assessment Group
WHO Review Board for Concise International Chemical Assessment Documents
WMO Commission for Hydrology
WMO Commission for Hydrology
WMO Expert Group on reviewing trend detection methods
WMO Expert Review Group on Sediment Dynamics
WMO GEWEX Canadian Advisory Panel
WMO GEWEX Scientific Steering Group
WMO Global Runoff Data Centre Steering Committee
WCRP – ISLSCP Scientific Steering Committee

Dr E A Gould
Prof R D Possee
Dr J I Cooper
Dr A S Dawson
Dr J D Goss-Custard
Chair
Co-ordinator

Prof M G R Cannell
Dr B Howard
Dr S Dobson
Prof I Newton
Programme Committee
Dr R E Kenward
Dr J S Cory
Prof T M Roberts
Prof S Albon
Prof J S Wallace
Chair
Treasurer
Chair
Trustee IVEM
Chair
Chair

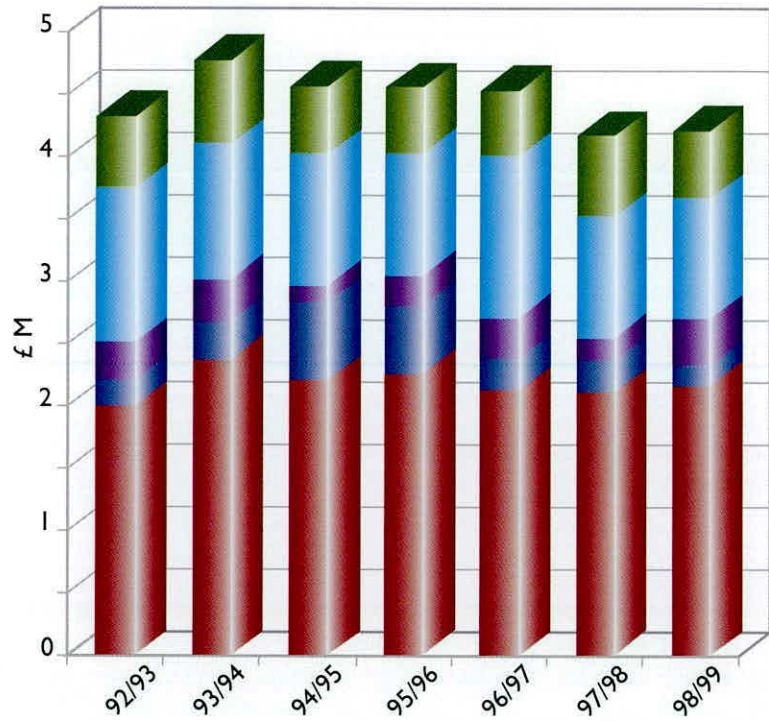
Mr F M Law
Chair

Dr A Gustard
Prof W B Wilkinson
Dr S Dobson
Dr S Dobson
Chair
UK Leader

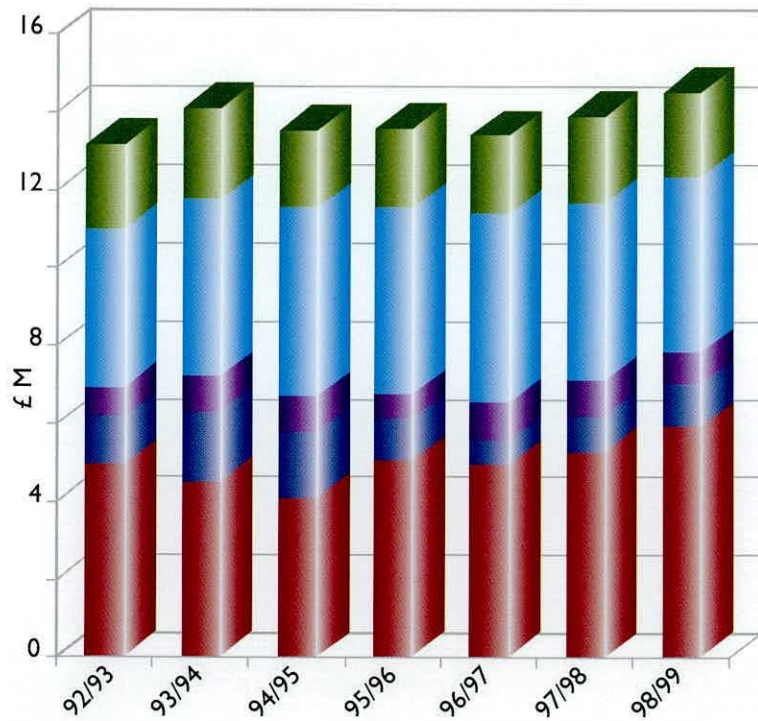
Prof W B Wilkinson
Mr F M Law
Dr A Robson
Mr G J L Leeks
Prof W B Wilkinson
Prof W B Wilkinson
Mr G Rees
Prof J S Wallace
UK Leader

APPENDIX 7: MAJOR SOURCES OF INCOME FOR CEH INSTITUTES

IFE INCOME



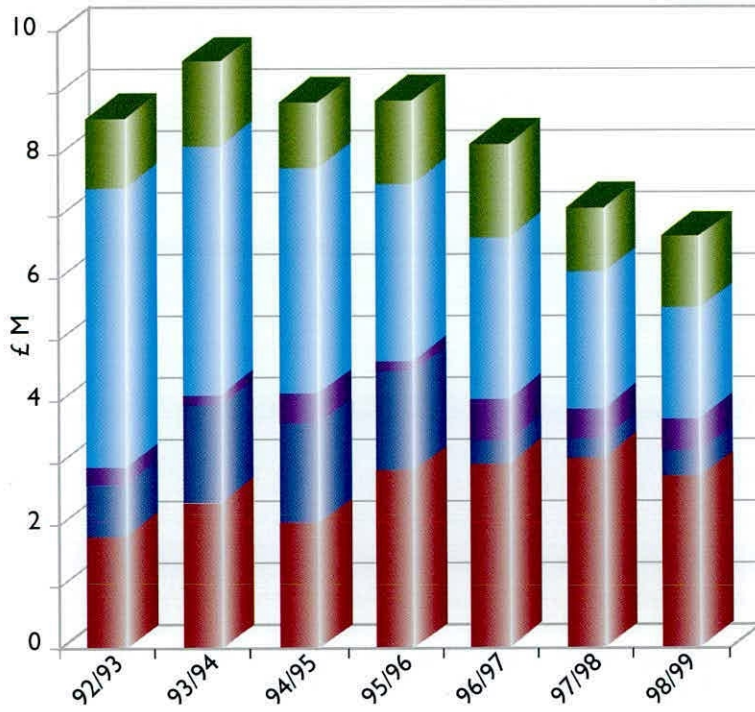
ITE INCOME



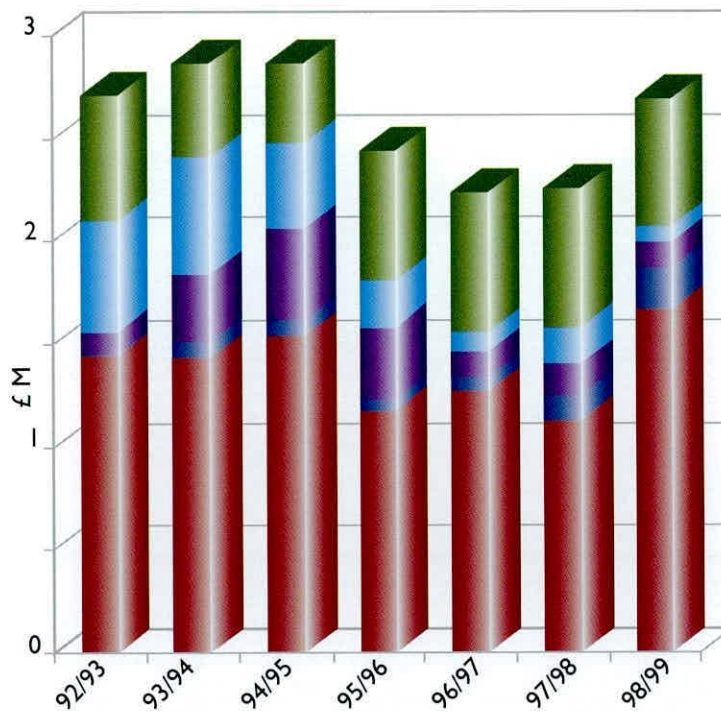


- Other External Income
- UK Government Customers
- EC
- NERC Thematic / Non Thematic programmes
- Science Budget

IH INCOME



IVEM INCOME



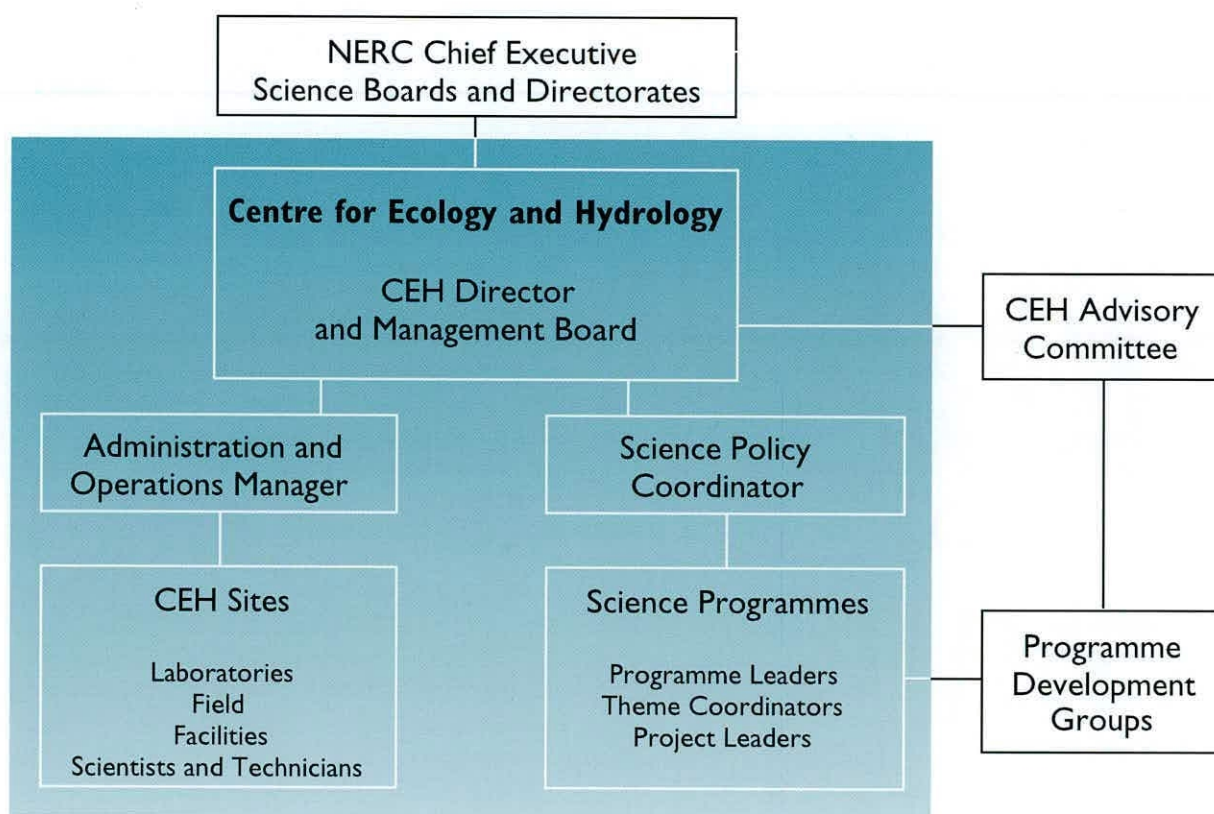
APPENDIX 8: NEW CEH STRUCTURE & REPORTING LINES

(FROM APRIL 2000)



Centre for Ecology & Hydrology

NERC's Centre for Ecology, Hydrology, Virology & Environmental Microbiology



Formerly:
Institute of Freshwater Ecology
Institute of Hydrology
Institute of Terrestrial Ecology
Institute of Virology & Environmental Microbiology

APPENDIX 9: NEW MANAGEMENT STRUCTURE

(FORM APRIL 2000)



NERC's Centre for Ecology, Hydrology,
Virology & Environmental Microbiology

T M Roberts
Director of CEH



Formerly:
Institute of Freshwater Ecology
Institute of Hydrology
Institute of Terrestrial Ecology
Institute of Virology & Environmental Microbiology



LOCATION OF CEH SITES

CENTRE FOR ECOLOGY & HYDROLOGY

Directorate

1. Wallingford

Institute of Freshwater Ecology

2. Windermere
3. Wareham
4. Edinburgh

Institute of Hydrology

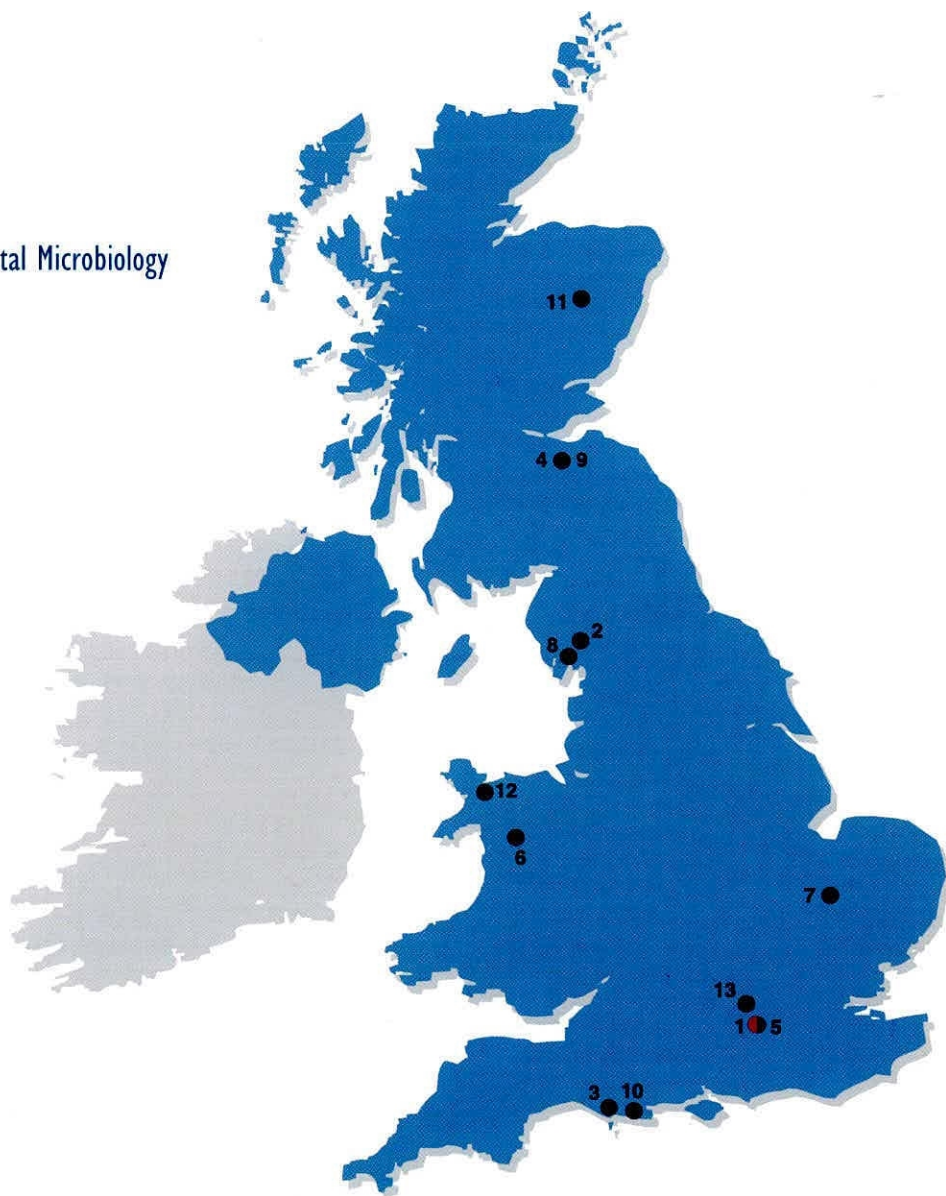
5. Wallingford
6. Plynlimon

Institute of Terrestrial Ecology

7. Monks Wood
8. Merlewood
9. Edinburgh
10. Furzebrook
11. Banchory
12. Bangor

Institute of Virology & Environmental Microbiology

13. Oxford



The

**Centre for
Ecology &
Hydrology**

Annual Report
1998 - 1999

ISBN: 1855312050

Centre for Ecology
& Hydrology,
Monks Wood,
Abbots Ripton,
Huntingdon,
PE17 2LS.

Tel: +44 (0) 1487 773381

Fax: +44 (0) 1487 773467

<http://www.ceh-nerc.ac.uk>



**Centre for
Ecology &
Hydrology**