

Improving the estimation of deep-sea megabenthos biomass: dimension to wet weight conversions for abyssal invertebrates

Jennifer M Durden^{1,2}, Brian J. Bett¹, Tammy Horton¹, Amanda Serpell-Stevens¹, Kirsty J. Morris¹, David S.M. Billett¹, Henry A. Ruhl¹

¹National Oceanography Centre, European Way, Southampton, UK SO14 3ZH

²Ocean and Earth Science, University of Southampton, National Oceanography Centre Southampton, European Way, Southampton, UK SO14 3ZH

1 Abstract

Deep-sea megafaunal biomass has typically been assessed by sampling with benthic sledges and trawls, but non-destructive methods, particularly photography, are becoming increasingly common. Estimation of individual wet weight in seabed photographs has been achieved using equations obtained from measured trawl-caught specimens for a limited number of taxa.

However, a lack of appropriate conversion factors has limited estimation across taxa encompassing whole communities. Here we compile relationships between measured body dimensions and preserved wet weights for a comprehensive catalogue of abyssal epibenthic megafauna, using ~47,000 specimens from the Porcupine Abyssal Plain (NE Atlantic) housed in the *Discovery Collections*. The practical application of the method is demonstrated using an extremely large dataset of specimen measurements from seabed photographs taken in the same location. We also collate corresponding field data on fresh wet weight, to estimate the impact of fixation in formalin and preservation in industrial denatured alcohol on the apparent biomass. Taxa with substantial proportions of soft tissues lose 35 to 60% of their wet weight during preservation, while those with greater proportions of hard tissues lose 10 to 20%. Our total estimated fresh wet weight biomass of holothurians and cnidarians in the photographic survey was ~20 times the previous estimates of total invertebrate biomass based on trawl catches. This dramatic uplift in megabenthic biomass has significant implications for studies of standing stocks, community metabolism, and numerical modelling of benthic carbon flows.

Key words: biomass, invertebrate, preservation, wet weight, photograph, deep sea, Porcupine Abyssal Plain

2 Introduction

Deep-sea epibenthic invertebrate megafaunal biomass has typically been assessed by sampling with sledges and trawl nets (Gage & Bett 2005). Our current understanding of the ecology of these assemblages is based on these techniques, including studies of community dynamics over time (Billett et al. 2001) and space (Alt et al. 2013), food web interactions (van Oevelen et al. 2012), the potential links between resource availability and community dynamics (Ruhl et al. 2014), and their contributions to large scale and global

assessments of standing stocks (Rex et al. 2006, Wei et al. 2010). Although trawling and similar approaches are necessary to obtain specimens for taxonomy, histology, and genetics, such samples have major quantitative uncertainty in terms of the seabed area sampled, and likely do not accurately represent the megabenthic community present (Rice et al. 1979, Bett et al. 2001).

The investigation of deep-sea communities has increasingly favoured non-destructive methods, primarily photography (Jamieson et al. 2013), which can produce quantitative data on the megabenthos (Jones et al. 2009, Smith & Rumohr 2013). Trawling has long been known to provide semi-quantitative sampling of megabenthic biomass, as a result of variable coverage and poor quantification of the seabed area sampled by trawls (Gage & Tyler 1991), lower catching efficiency of trawls, and body-size and tissue-type based variation in trawl efficiency (Owen et al. 1967, Rice et al. 1979, Smith & Hamilton 1983, Bett et al. 2001, Durden et al. 2015b). Large photographic surveys of the seabed have revealed substantially higher standing stocks of deep-sea megabenthos than corresponding trawl catch data (Morris et al. 2014, Durden et al. 2015a), thus the use of seabed photography to improve quantification of biomass is logical and of potentially substantial significance to our understanding of deep-sea ecology generally, and carbon budgets in particular. For example, consider the expectation that the distribution of biomass in marine communities may be constant across logarithmic size classes (Sheldon et al. 1972), or increase continuously in logarithmic classes among the benthos (Bett 2013, Kelly-Gerreyn et al. 2014). Consequently, a substantial fraction of standing stock carbon may be represented by the megabenthos that are currently grossly underestimated from trawl catch data.

Some previous photographic studies have estimated megafaunal biomass using abundances estimated from photographs in combination with mean wet weights of trawled specimens, largely in high-level taxonomic groupings for key faunal groups (e.g. Smith & Hamilton 1983, Thresher et al. 2011). Detailed estimation of abyssal invertebrate wet weights from dimensions measured in seabed photographs, has been achieved for echinoderms (Ruhl et al 2014), and for high-level taxonomic groupings at the Mid-Atlantic Ridge (Alt et al. 2013) and the northeast Atlantic (Christiansen & Thiel 1992). Further conversions between body length wet weight from trawl-caught specimens have been published for individual species (e.g. *Enygniastes eximia*; Bailey et al. 1994). However, a lack of appropriate conversion factors for many taxa has limited estimation across complete megafaunal communities.

Here we establish a comprehensive compilation of relationships between measured body dimensions and preserved wet weights for abyssal epibenthic megafauna from the Porcupine Abyssal Plain (PAP, NE Atlantic). We accessed specimens from the exceptional archive of trawl-caught megabenthos housed in the *Discovery Collections* at the National Oceanography Centre, Southampton (Horton et al. submitted). We develop

links between those data and an extremely large dataset of specimens measured from seabed photographs taken in the same location, to test the practical application of the method. We collate corresponding field data on fresh wet weight, to estimate the impact of preservation on the apparent biomass of the megabenthos assemblage. Finally, we illustrate the significance of our approach by comparison with previously published estimates of PAP megafaunal biomass.

3 Method

3.1 Dimension to wet weight conversions from trawled specimens

Conversions were created using ~47,000 specimens collected in the vicinity of the Porcupine Abyssal Plain Sustained Observatory Site (PAP; 48°50'N 16°30'W, 4850m water depth; Hartman et al. 2012) using a semi-balloon otter trawl (Billett et al. 2001) on a number of research cruises between August 1996 and October 2002 [RRS *Discovery* 222 (Rice 1996), 226 (Rice 1997), 229 (Bett 1998), 231 (Rice 1998), 237 (Sibuet 1999), 266, and on RRS *Challenger* 135 (Billett & scientists 1998) and 142 (Billett & scientists 2000)]. Specimens were fixed in borax-buffered 10% formalin-seawater at sea, and subsequently transferred to 80% industrial denatured alcohol for long-term preservation once ashore (generally within two months of sample collection). For the analyses presented here, specimens were reduced to those considered to be complete and intact (e.g. including coelomic fluid in the case of holothurians). Damaged and / or partial specimens were excluded, except in the case of ophiuroids and brisingids where no complete, intact specimens were available. Recommendations for the processing of fluid-preserved specimens (Simmons 2014) were generally followed.

Physical dimensions and wet weights were recorded for each specimen. The dimension selected was generally the linear 'length' (Table 1). In asteroids, the radius from the centre of the disk to the end of an outstretched arm was measured. A similar measurement was made for ophiuroids, and the disk diameter was also measured. The column diameter was measured in anemones. The length of the longest leg was measured in pycnogonids. Otherwise, appendages were excluded, particularly those that are flexible or retractable, such as the vellum and papillae in holothurians. Visible surface liquid was removed by blotting using absorbent towel prior to weighing. Wet weights of crustaceans, echinoderms and molluscs included the shells. In taxa where dimensions could not be reproducibly measured (Table 2), only wet weights were recorded.

Power relationships were established between the measured dimension and the preserved wet weight of the specimen, with the form

$$P = A \times L^B$$

where P is preserved wet weight (g), L is measured dimension (mm), and A and B are coefficients fitted using linear regression of the logarithm of the

formula above. An R^2 value was computed to evaluate the goodness of fit. Preliminary relationships were presented in Durden et al. (2015a).

3.2 Application to seabed photographs

These conversions were applied to individuals identified and measured in 28,200 seabed photographs (representing some 3.6 ha of seabed) from the PAP site obtained with the Autosub6000 autonomous underwater vehicle from RRS *Discovery* research cruise 377 (Ruhl & scientists 2013, Morris et al. 2014). Methods for image processing and annotation are detailed in Morris et al. (2014); in brief, distinctly identifiable megafauna were classified and measured in vertical seabed photographs, following processing of the images to correct for camera orientation. Image pixel dimensions were converted to physical units using the altitude and orientation of the camera (Jones et al. 2009, Morris et al. 2014).

Invertebrates were identified to the lowest practicable taxonomic levels, which was not always to the same detail for specimens in photographs as for those caught in trawls. Matching morphotypes identified in photographs to taxa identified in the trawl catches was not always straightforward. Some morphotypes differ in appearance as a result of trawl capture and subsequent fixation (e.g. retraction of tentacles and contraction of oral disc in anemones, retraction of papillae in holothurians). In cases where specimens from multiple species were grouped, it is indicated in Tables 1 and 2.

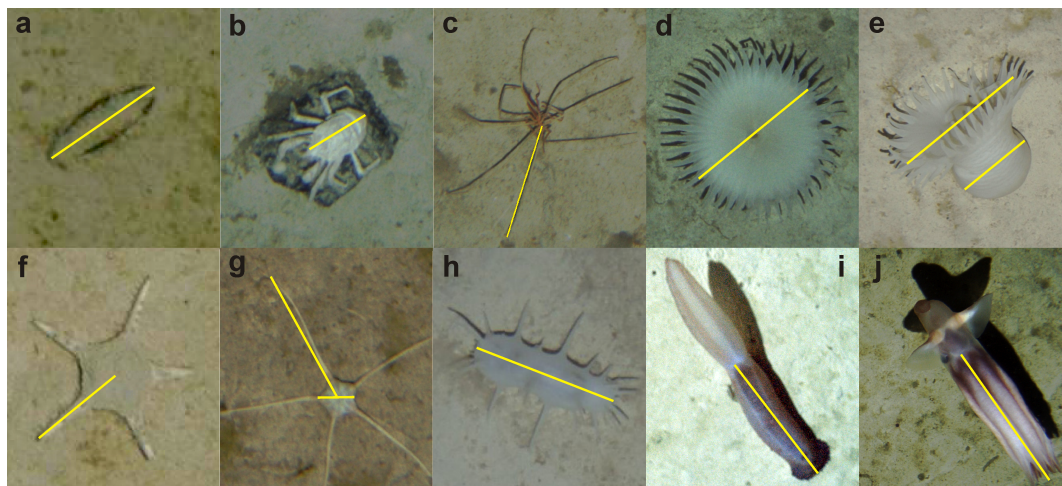


Figure 1. Example measured dimensions (in yellow) of representative morphotypes: (a) body length of Annelida – *Laetmonice* spp.; (b) length of Arthropoda – *Munidopsis* spp.; (c) leg length of Pycnogonida; (d) oral disc diameter of Cnidaria – *Sicyonis* sp., see also (e) the disk and column diameters as measured in trawl-caught specimens (see Table 2); (f) radius from body centre to end of arm of Echinodermata, Asterozoa – *Styracaster* spp.; (g) alternate measurements of disc diameter and radius from body centre to end of arm of Echinodermata – Ophiurozoa; (h) body length of Echinodermata, Holothurozoa – *Oneirophanta mutabilis*, also note (i) body length excluding sail of *Psychropotes longicauda*; (j) arm length of Mollusca – Cephalopoda.

Some morphotypes presented difficulties in the selection of a measured dimension that was practical in the photographs, and matched the dimension measured of the preserved specimens. Figure 1 shows examples of the measured dimensions in images that were also possible in preserved specimens. For certain anemones, a common measured dimension in both the photographs and preserved specimens was not practical, so a further conversion between the dimension measured in preserved specimens (column diameter) and the dimension measured in photographs (oral disk diameter) was applied (Figure 1). These conversions were established by measuring both dimensions in a subset of images where both dimensions could be observed, and were applied to image measurements prior to wet weight conversion. Power relationships were established between the column diameter and the disc diameter (Table 3), with the form

$$C = G \times D^H$$

where C is the column diameter (pixels), D is the oral disk diameter (pixels), and G and H are coefficients fitted using linear regression of the logarithm of the formula above. An R^2 value was computed to evaluate the goodness of fit. The underestimation of the measured dimension is acknowledged in taxa where legs or arms may not be extended fully in photographs (e.g. pycnogonids, brisingids), but measurements of preserved specimens would be of extended appendages.

3.3 Preserved to fresh wet weight conversions

Conversions between fresh wet weights, measured at sea, and preserved wet weights following fixation in buffered formalin and preservation in industrial denatured alcohol were established using batch wet weights of trawl-caught specimens, aggregated by taxon, collected from RRS *Discovery* 237 (Sibuet 1999), RRS *Discovery* 229 (Bett 1998), and RRS *Challenger* 142 (Billett & scientists 2000). Again, recommendations for the processing of fluid-preserved specimens (Simmons 2014) were generally followed. Note that these batch weights included all specimens (including both damaged and intact specimens) in the determinations of both preserved and fresh weights. Consequently, apparent data outliers (e.g. samples where fresh wet weights included attached clinker in anemones, for example) were identified, evaluated using Q-Q plots and Cook's distance in R software (R Core Team 2015), and removed. Following this data editing, relationships were established of the form

$$P = J \times F$$

where P is the preserved wet weight (g), F is the fresh wet weight (g), and J is a coefficient determined by linear least-squares regression fitted in R (R Core Team 2015) with zero intercept.

Total biomass (g fresh wet weight ha^{-1}) was calculated by converting the measured dimension for each specimens observed in the seabed photographs to fresh wet weight using the methods detailed above, and summing for each morphotype. Morphotypes for which no specific

conversions were available, estimates were based on conversions for the nearest morphological analogue.

4 Results and Discussion

Dimension to preserved wet weight conversions for 34 taxa are presented in Table 1, and preserved wet weights of a further six taxa for which dimensions could not be measured are given in Table 2. Published size and preserved wet weight data are scarce for many deep-sea taxa, so we have included values for as many groups as possible. The number of specimens available per taxon ranged from 6 to 44,630, with 24 of the conversions based on at least 50 specimens. The goodness of fit of the conversions derived from the trawl catch data (R^2) varied between taxa, with 24 conversions having at least 0.75. Conversions computed from small numbers of specimens should of course be treated with caution.

For some taxa, the trawled specimens represented a wide range of dimensions and preserved wet weights (e.g. Figure 2 a and b), likely encompassing much of the seasonal and inter-annual variations in individual size. However, the trawl-caught specimens did not always include the full range of dimensions determined from the photographs. The size classes of taxa in photographs overlapped those from the trawls, but for some taxa, smaller or larger individuals were measured in the photographs (e.g. Figure 2 e). This comparison provides an indirect validation of the dimensions measured in photographs, as there was no drastic difference in sizes, and indicates the broad equivalency of sizes between trawled and photographed specimens, suggesting that the application of our conversions was appropriate. However, extrapolation of conversions beyond the size ranges of the trawl-caught specimens may not be appropriate.

The use of the oral disk to column diameter conversion in the four actinarian taxa resulted in a substantial improvement in the correspondence of size classes between photographs and trawls. For example, of 86 individuals of *Daontesia porcupina* (Riemann-Zürneck 1997a) identified in photographs, 72 were larger than the range of trawled specimens without the conversion, this was reduced to 2 after the conversion was applied. Similarly, of 259 photographed individuals of *Amphianthus bathybius* (Hertwig & Herdman 1882), 234 were larger than the trawl-measured size range, reduced to only 8 after conversion. Further improvements to this method for anemones, and other taxa that retract or shrink substantially upon collection, could be made by photographing and collecting specific individuals *in-situ*, given sufficient ROV time.

Published conversions between preserved and fresh wet weights in deep-sea taxa are also scarce. Here we have included conversions for as many taxa as possible (Table 4), even where sample numbers were low. The goodness of fit (R^2) was, nevertheless, generally high (0.93 to 0.998).

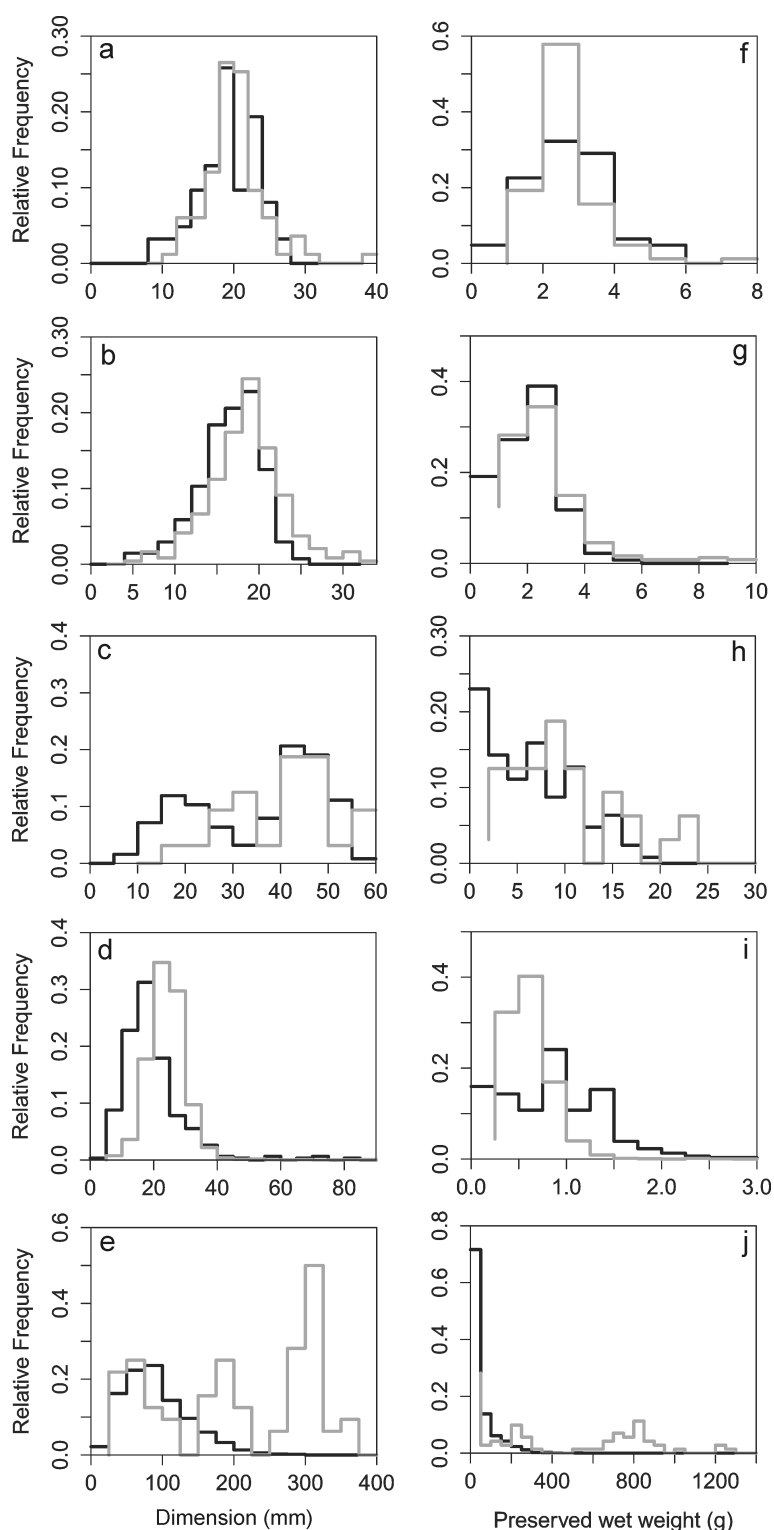


Figure 2. Distributions of dimension (mm) and preserved wet weight (g) from trawl-caught specimens (black) and estimated from photographs (grey): (a) *Daontesia porcupina* (diameter); (b) *Amphianthus bathybius* (diameter); (c) *Styracaster* spp. (radius); (d) Ophiuroidea (radius), (e) *Psychropotes longicauda* (length), (f-j) corresponding preserved wet weight data.

Taxa with substantial proportions of soft tissues, such as some holothurians, tunicates, sipunculids and cephalopods, appear to lose 35 to 60% of their fresh wet mass on preservation. This is similar to the loss estimated generally for holothurians (40%) by Billett et al. (2001) from data on shallow-water species given by Conand (1989). Taxa with greater proportions of hard / structural tissues, such as asteroids, some arthropods and gastropods, lose 10 to 20% of their fresh wet mass on preservation. Our estimates do not consider changes in preserved wet weights with time, which have been studied in shallow-water polychaetes and amphipods (Gaston et al. 1996, Wetzel et al. 2005). For example, Mills et al. (1982) found that wet weight increased immediately after fixation in formalin, followed by a reduction in wet weight over time. As our specimens were preserved for at least two months prior to measurement, their wet weights may have largely stabilised, as potentially suggested by the high R^2 values (Table 4).

The development of wet weight conversions from photographic dimensions for a wide range of taxa will facilitate the improved estimation of deep-sea megafaunal biomass from the large numbers of seabed photographs now being routinely captured in many studies (e.g. Morris et al. 2014, Wynn et al. 2014). The improved quantification of benthic megafaunal biomass using photographs (see e.g. Christiansen & Thiel 1992, and expanded upon here), can be illustrated with key taxa from the PAP. Holothurians dominate the biomass at the PAP and their temporal variation has long been the focus of research (Billett et al. 2001, Billett et al. 2010), while the dominance of cnidarians has only recently been appreciated (Durden et al. 2015b). Billett et al. (2010) estimate mean holothurian biomass across all trawls over the years 1989-2005 at 1903 (95% CI 1693-2138) g wet weight ha^{-1} , cnidarian biomass at 44 (38-51) g wet weight ha^{-1} , and that of total invertebrates at 2111 (1888-2359) g wet weight ha^{-1} . Durden et al. (2015a) employed a towed camera survey and preliminary conversions to wet weight from photographs, and estimated total invertebrate biomass at the PAP at 24200 g wet weight ha^{-1} , eight times the highest value reported by Billett et al. (2010). Holothurian and cnidarian biomass were estimated at 18500 and 5400 g preserved wet weight ha^{-1} , respectively, ten and 125 times the values reported by Billett et al. (2010). Using the conversions presented here, and the photographic survey reported by Morris et al. (2014) at the PAP site, holothurian biomass was estimated at 36200 g fresh wet weight ha^{-1} , and cnidarian biomass at 9200 g fresh wet weight ha^{-1} . These estimates are each twice those given by Durden et al. (2015a), and 19 and 214 times the estimates by Billett et al. (2010). The sum of holothurian and cnidarian biomass is ~20 times the Billett et al. (2010) value for total invertebrate biomass. Given these dramatic uplifts in megabenthic biomass over trawled estimates from the PAP, it is clear that biomass estimation by this method will have a profound effect on studies of standing stocks, community metabolism, and the numerical modelling of carbon flows (e.g. van Oevelen et al. 2012).

5 Acknowledgements

We thank the captains and crews of research cruises RRS *Discovery* 222, 226, 229, 231, 237, 266 and 377, and RRS *Challenger* 135 and 142. This project was dependent upon the long-term curation of ecological specimens by the *Discovery Collections*, National Oceanography Centre, Southampton, UK. This work was funded by the UK Natural Environment Research Council (NERC), and contributes to the Autonomous Ecological Surveying of the Abyss project (NERC NE/H021787/1), the NERC Marine Environmental Mapping Programme (MAREMAP), and the Porcupine Abyssal Plain – Sustained Observatory (NERC National Capability programme).

6 References

- Alt CHS, Rogacheva A, Boorman B, Hughes JA, Billett DSM, Gooday AJ, Jones DOB (2013) Trawled megafaunal invertebrate assemblages from bathyal depth of the Mid-Atlantic Ridge (48°W-54°N). *Deep-Sea Research Part II: Topical Studies in Oceanography* 98:326-340
- Bailey TG, Torres JJ, Youngbluth MJ, Owen GP (1994) Effect of Decompression on Mesopelagic Gelatinous Zooplankton: A Comparison of In-Situ and Shipboard Measurements of Metabolism. *Marine Ecology Progress Series* 113:13-27
- Bett BJ (1998) RRS *Discovery* Cruise 229, 02 Jul - 31 Jul 1997. BENGAL: High resolution and spatial study of the BENThic biology and Geochemistry of a north-eastern Atlantic abyssal Locality, Southampton Oceanography Centre, Southampton, UK Cruise Report, No. 15:69
- Bett BJ (2013) Characteristic benthic size spectra: potential sampling artefacts. *Marine Ecology Progress Series* 487:1-6
- Bett BJ, Malzone MG, Narayanaswamy BE, Wigham BD (2001) Temporal variability in phytodetritus and megabenthic activity at the seabed in the deep Northeast Atlantic. *Progress in Oceanography* 50:349-368
- Billett DSM, Bett BJ, Reid WDK, Boorman B, Priede IG (2010) Long-term change in the abyssal NE Atlantic: The 'Amperima Event' revisited. *Deep-Sea Research Part II: Topical Studies in Oceanography* 57:1406-1417
- Billett DSM, Bett BJ, Rice AL, Thurston MH, Galeron J, Sibuet M, Wolff GA (2001) Long-term change in the megabenthos of the Porcupine Abyssal Plain (NE Atlantic). *Progress in Oceanography* 50:325-348
- Billett DSM, scientists (1998) RRS *Challenger* Cruise 135, 15 Oct-30 Oct 1997. BENGAL: High resolution temporal and spatial study of the BENThic biology and Geochemistry of a north-eastern Atlantic abyssal Locality., Southampton Oceanography Centre, Southampton, UK Cruise Report, No. 19:49
- Billett DSM, scientists (2000) RRS *Challenger* Cruise 142, 19 Apr-19 May 1999. Temporal and spatial variability of benthic communities on the Porcupine Abyssal Plain and in the Porcupine Seabight, Southampton Oceanography Centre, Southampton, UK Cruise Report, No. 30:79

Postprint version, published as:

Durden, JM, Bett BJ, Horton T, Serpell-Stevens, KJ, Morris, DSM, Billett, HA, Ruhl, 2016. Improving the estimation of deep-sea megabenthos biomass: dimension to wet weight conversions for abyssal invertebrates. *Marine Ecology Progress Series*, doi: 10.3354/meps11769.

- Carlgren O (1934) Ceriantharia, Zoantharia and Actiniaria from the "Michael Sars" North Atlantic Deep-sea Expedition 1910, Bergen Museum, Christiansen B, Thiel H (1992) Deep-Sea Epibenthic Megafauna of the Northeast Atlantic - Abundance and Biomass at 3 Midoceanic Locations Estimated from Photographic Transects. *Nato Adv Sci I C-Mat* 360:125-138
- Clark AH (1948) Some interesting starfishes and brittlestars dredged by the "Atlantis" in the mid-Atlantic. *Journal of the Washington Academy of Science* 38:75-78
- Conand C (1989) Les holothuries aspidochirotés du Lagon de Nouvelle-Caledonie. *Biologie, ecologie et exploitation*. Institut Français de recherche Scientifique pour le développement en coopération, Paris
- Durden JM, Bett BJ, Jones DOB, Huvenne VAI, Ruhl HA (2015a) Abyssal hills - hidden source of increased habitat heterogeneity, benthic megafaunal biomass and diversity in the deep sea. *Progress in Oceanography* 137, Part A:209-218
- Durden JM, Bett BJ, Ruhl HA (2015b) The hemisessile lifestyle and feeding strategies of *Iosactis vagabunda* (Actiniaria, Iosactiidae), a dominant megafaunal species of the Porcupine Abyssal Plain. *Deep-Sea Research Part I: Oceanographic Research Papers* 102:72-77
- Gage JD, Bett BJ (2005) Deep-Sea Benthic Sampling. In: Eleftheriou A, McIntyre A (eds) *Methods for the Study of Marine Benthos*. Blackwell Science Ltd, Oxford, UK
- Gage JD, Tyler PA (1991) *Deep-sea biology: a natural history of organisms at the deep-sea floor*. Cambridge University Press, Cambridge
- Gaston GR, Bartlett JHW, McAllister AP, Heard RW (1996) Biomass Variations of Estuarine Macrobenthos Preserved in Ethanol and Formalin. *Estuaries* 19:674-679
- Gravier C (1918) Note préliminaire sur les Hexactiniaires recueillis au cours des croisières de la Princesse-Alice et de l'Hirondelle de 1888 à 1913 inclusivement. *Bulletin de l'Institut Océanographique, Monaco* 346:1-24
- Hartman SE, Lampitt RS, Larkin KE, Pagnani M, Campbell J, Gkritzalis T, Jiang Z-P, Pebody CA, Ruhl HA, Gooday AJ, Bett BJ, Billett DSM, Provost P, McLachlan R, Turton JD, Lankester S (2012) The Porcupine Abyssal Plain fixed-point sustained observatory (PAP-SO): variations and trends from the Northeast Atlantic fixed-point time-series. *ICES Journal of Marine Science: Journal du Conseil* 69:776-783
- Hérouard E (1902) *Holothuries provenant des campagnes de la Princesse-Alice: 1892-1897*. Imprimerie de Monaco
- Hérouard E (1923) *Holothuries provenant des campagnes des yachts Princesse-Alice et Hirondelle II: 1898-1915*. Imprimerie de Monaco
- Hertwig R, Herdman WA (1882) *Report on the Actiniaria*
- Horton T, Thurston M, Serpell-Stevens A (submitted) Cataloguing without a curator: the challenge of the modern Discovery Collections. *Biodiversity Data Journal*

Postprint version, published as:

Durden, JM, Bett BJ, Horton T, Serpell-Stevens, KJ, Morris, DSM, Billett, HA, Ruhl, HA (2016). Improving the estimation of deep-sea megabenthos biomass: dimension to wet weight conversions for abyssal invertebrates. *Marine Ecology Progress Series*, doi: 10.3354/meps11769.

- Jamieson A, Boorman B, Jones DOB (2013) Deep-Sea Benthic Sampling. In: Eleftheriou A (ed) *Methods for the Study of Marine Benthos*. John Wiley & Sons, Ltd., Chichester
- Jones DOB, Bett BJ, Wynn RB, Masson DG (2009) The use of towed camera platforms in deep-water science. *International Journal of the Society for Underwater Technology* 28:41-50
- Kelly-Gerreyn BA, Martin AP, Bett BJ, Anderson TR, Kaariainen JI, Main CE, Marcinko CJ, Yool A (2014) Benthic biomass size spectra in shelf and deep-sea sediments. *Biogeosciences* 11:6401-6416
- Ludwig H (1907) Diagnosen neuer Tiefsee Seesterne aus der Familie der Porcellanasteriden. *Zoologischer Anzeiger* 31:312-319
- Mills EL, Pittman K, Munroe B (1982) Effect of preservation on the weight of marine benthic invertebrates. *Canadian Journal of Fisheries and Aquatic Sciences* 39:221-224
- Morris KJ, Bett BJ, Durden JM, Huvenne VAI, Milligan R, Jones DOB, McPhail S, Robert K, Bailey D, Ruhl HA (2014) A new method for ecological surveying of the abyss using autonomous underwater vehicle photography. *Limnology and Oceanography: Methods* 12:795-809
- Owen DM, Sanders HL, Hessler RR (1967) Bottom photography as a tool for estimating benthic populations. In: Hersey JB (ed) *Deep-Sea Photography*, Book No. 3. The Johns Hopkins Press, Baltimore
- Perrier E (1886) *Les explorations sous marines*. Hachette
- R Core Team (2015) *R: A language and environment for statistical computing*. R Foundation for Statistical Computing, Vienna
- Rex MA, Etter RJ, Morris JS, Crouse J, McClain CR, Johnson NA, Stuart CT, Deming JW, Thies R, Avery R (2006) Global bathymetric patterns of standing stock and body size in the deep-sea benthos. *Marine Ecology Progress Series* 317:1-8
- Rice AL (1996) RRS Discovery Cruise 222, Leg 2, 29 Aug-24 Sep 1996. BENGAL: High resolution temporal and spatial study of the BENThic biology and Geochemistry of a north-eastern Atlantic abyssal Locality, Southampton Oceanography Centre, Southampton, UK Cruise Report No. 4:86
- Rice AL (1997) RRS Discovery Cruise 226, 12 Mar-10 Apr 1997. BENGAL: High resolution temporal and spatial study of the BENThic biology and Geochemistry of a north-eastern Atlantic abyssal Locality, Southampton Oceanography Centre, Southampton, UK Cruise Report, No. 13:76
- Rice AL (1998) RRS Discovery Cruise 231, 28 Feb-30 Mar 1998. BENGAL: High resolution temporal and spatial study of the BENThic biology and Geochemistry of a north-eastern Atlantic abyssal Locality., Southampton Oceanography Centre, Southampton, UK Cruise Report, No. 18:84
- Rice AL, Aldred RG, Billett D, Thurston MH (1979) The combined use of an epibenthic sledge and a deep-sea camera to give quantitative relevance to macro-benthos samples. *Ambio Special Report* 6:59-72

Postprint version, published as:

Durden, JM, BJ Bett, T Horton, A Serpell-Stevens, KJ Morris, DSM Billett, HA Ruhl, 2016. Improving the estimation of deep-sea megabenthos biomass: dimension to wet weight conversions for abyssal invertebrates. *Marine Ecology Progress Series*, doi: 10.3354/meps11769.

- Riemann-Zürneck K (1979) Two disc-shaped deep sea Anthozoa from the Gulf of Biscay, with a survey of adaptation types in the Actiniaria. *Zoomorphologie* 93:227-243
- Riemann-Zürneck K (1991) A new species of *Sicyonis* (Actinaria: Actinostolidae) from the abyssal NE Atlantic. *Mitteilungen aus dem Hamburgischen Zoologischen Museum und Institut* 88:7-15
- Riemann-Zürneck K (1997a) The deep-sea anemones *Bathypheilia margaritacea* and *Daontesia porcupina* sp. nov. with comments on the family Bathypheiliidae. *J Mar Biol Assoc Uk* 77:361-374
- Riemann-Zürneck K (1997b) A Hemisessile Sea Anemone from the Porcupine Abyssal Plain, North Atlantic Ocean: *Iosactis vagabunda* gen. nov., sp. nov. *J Mar Biol Assoc Uk* 77:1025
- Ruhl H, Bett BJ, Hughes SJM, Alt CHS, Ross EJ, Lampitt RS, Pebody CA, Smith Jr KL, Billett DSM (2014) Links between deep-sea respiration and community dynamics. *Ecology* 95:1651-1662
- Ruhl H, scientists (2013) *RRS Discovery* Cruise 377 & 378, 05-27 July 2012. Autonomous ecological surveying of the abyss: understanding mesoscale spatial heterogeneity at the Porcupine Abyssal Plain, National Oceanography Centre, Southampton, Southampton, UK Cruise Report No. 23:73
- Sheldon RW, Prakash A, Sutcliffe WH (1972) The size distribution of particles in the ocean. *Limnology and Oceanography* 17:327-340
- Sibuet M (1999) *RRS Discovery* Cruise 237, 25 Sep-08 Oct 1998. BENGAL: High resolution temporal and spatial study of the BENThic biology and Geochemistry of a north-eastern Atlantic abyssal Locality., Southampton Oceanography Centre, Southampton, UK Cruise Report, No. 23:38
- Simmons JE (2014) *Fluid Preservation: A Comprehensive Reference*. Rowman & Littlefield, Plymouth, UK
- Sladen WP (1883) The Asteroidea of H. M. S. Challenger Expedition. (Preliminary notices). 2. Astropectinidae. *Journal of the Linnean Society of London, Zoology* 17:214-269
- Smith CJ, Rumohr H (2013) *Imaging Techniques*. In: Eleftheriou A (ed) *Methods for the Study of Marine Benthos*. John Wiley & Sons, Ltd., Chichester
- Smith CR, Hamilton SC (1983) Epibenthic megafauna of a bathyal basin off southern California: patterns of abundance, biomass, and dispersion. *Deep-Sea Research* 30:907-928
- Solis-Marin FA, Billett DSM, Preston J, Rogers AD (2004) Mitochondrial DNA sequence evidence supporting the recognition of a new North Atlantic *Pseudostichopus* species (Echinodermata : Holothuroidea). *J Mar Biol Assoc Uk* 84:1077-1084
- Théel H (1879) Preliminary Report on the Holothuridae of the Exploring Voyage of H.M.S. "Challenger" under Professor Sir C. Wyville Thomson F.R.S. Part 1. Communicated to the Royal Swedish Academy of Sciences June 11., PA Norstedt och söner, 20

Postprint version, published as:

Durden, JM, BJ Bett, T Horton, A Serpell-Stevens, KJ Morris, DSM Billett, HA Ruhl, 2016. Improving the estimation of deep-sea megabenthos biomass: dimension to wet weight conversions for abyssal invertebrates. *Marine Ecology Progress Series*, doi: 10.3354/meps11769.

- Théel H (1882) Report on the Holothuroidea dredged by H.M.S. 'Challenger' during the years 1873-76. Part i. Challenger Reports, Zool. iv:176
- Théel H (1886a) Report on Holothuroidea of the Blake expeditions 1877-1880. Bulletin of the Museum of Comparative Zoology at Harvard College 13:1-21
- Théel H (1886b) Report on the Holothuroidea dredged by the HMS Challenger during the years 1873-1876. Part II. Report on the Scientific Results of the Voyage of H.M.S. Challenger 1873-1876. Zoology 14:1-290
- Thresher RE, Adkins J, Fallon SJ, Gowlett-Holmes K, Althaus F, Williams A (2011) Extraordinarily high biomass benthic community on Southern Ocean seamounts. *Scientific Reports* 1:119
- van Oevelen D, Soetaert K, Heip C (2012) Carbon flows in the benthic food web of the Porcupine Abyssal Plain: The (un)importance of labile detritus in supporting microbial and faunal carbon demands. *Limnology and Oceanography* 57:645-664
- Verrill AE (1884) Notice of the remarkable marine fauna occupying the outer banks off the southern coast of New England; No. 9, Brief contributions to zoology from the Museum of Yale College; No. LV. *American Journal of Science* 165:213-220
- Wei C-L, Rowe GT, Escobar-Briones E, Boetius A, Soltwedel T, Caley MJ, Soliman Y, Huettmann F, Qu F, Yu Z, Pitcher CR, Haedrich RL, Wicksten MK, Rex MA, Baguley JG, Sharma J, Danovaro R, MacDonald IR, Nunnally CC, Deming JW, Montagna P, Levesque M, Weslawski JM, Wlodarska-Kowalczyk M, Ingole BS, Bett BJ, Billett DSM, Yool A, Bluhm BA, Iken K, Narayanaswamy BE (2010) Global Patterns and Predictions of Seafloor Biomass Using Random Forests. *PLoS ONE* 5:e15323
- Wetzel M, Leuchs H, Koop JE (2005) Preservation effects on wet weight, dry weight, and ash-free dry weight biomass estimates of four common estuarine macro-invertebrates: no difference between ethanol and formalin. *Helgoland Mar Res* 59:206-213
- Wynn RB, Huvenne VA, Le Bas TP, Murton BJ, Connelly DP, Bett BJ, Ruhl HA, Morris KJ, Peakall J, Parsons DR (2014) Autonomous Underwater Vehicles (AUVs): Their past, present and future contributions to the advancement of marine geoscience. *Mar Geol* 352:451-468

Table 1. Dimension (mm) to preserved wet weight (g) conversions created from specimens collected in trawls of the form preserved wet weight (g) = A x dimension (mm)^B. Measured dimensions, not including appendages (e.g. tentacles, papillae, antennae, etc.): L = length, D = diameter, R = radius from centre of disc to end of arm. Species denoted (*) had dimensions corrected using values in Table 3 prior to conversion.

Taxon	Measured Dimension (mm)	A (x 10 ⁻⁴)	B	R ²	n	Dimension range (mm)	Preserved wet weight range (g)
ANNELIDA							
<i>Laetmonice</i> spp.	L	2	2.307	0.756	170	22-91	0.10-9.40
ARTHROPODA							
<i>Cirripedia</i>	Rostral L	0.3	3.440	0.824	26	13-35	0.22-7.57
<i>Pycnogonida</i>	Leg L	0.06	2.843	0.980	6	68-154	8.00-15.00
<i>Munida</i> spp. / <i>Munidopsis</i> spp.	Body L	6	2.747	0.923	16	6.5-47	0.09-31.20
<i>Isopoda</i>	L	0.4	3.047	0.976	11	18-46	0.22-4.03
CNIDARIA							
<i>Actinaria</i>	Column D	26	2.360	0.748	683	5-80	0.02-171.7
<i>Iosactis vagabunda</i> (Riemann-Zürneck 1997b)*	Column D	788	0.961	0.215	140	5-11	0.23-1.39
<i>Parasicyonis biotrans</i> (Riemann-Zürneck 1991)*	Column D	530790	0.235	0.1	18	35-80	92.70-171.70
<i>Daontesia porcupina</i> (Riemann-Zürneck 1997a)*	Column D	159	1.696	0.462	62	9-28	0.85-5.56
<i>Actinauge abyssorum</i> (Carlgren 1934)	Column D	9	2.802	0.896	156	7-35	0.11-17.73
<i>Amphianthus bathyblum</i> (Hertwig 1882)*	Column D	12	2.578	0.890	137	6-26	0.11-5.03
<i>Sicyopus commensalis</i> (Gravier 1918)	Column D	5	2.678	0.909	144	5-23	0.02-2.75
<i>Segonzactis platypus</i> (Riemann-Zürneck 1979)	Column D	11	2.260	0.774	23	9-22	0.16-1.82
<i>Fungiacyathus</i> spp.	D	6	2.357	0.667	10	21-29	0.73-1.87
<i>Umbellula</i> spp.	L	103	1.010	0.725	52	27-1319	0.11-12.91
ECHINODERMATA							
<i>Asteroida</i>							

Postprint version, published as:
 Durden, JM, BJ Bett, T Horton, A Serpell-Stevens, KJ Morris, DSM Billett, HA Ruhl, 2016. Improving the estimation of deep-sea megabenthos biomass: dimension to wet weight conversions for abyssal invertebrates. *Marine Ecology Progress Series*, doi: 10.3354/meps11769.

<i>Pythonaster atlantidis</i> (Clark 1948)	R	2601	0.917	0.414	10	15-143	16.25-48.58
<i>Styracaster chuni</i> (Ludwig 1907) / <i>Styracaster horridus</i> (Sladen 1883)	R	26	2.133	0.929	126	6-60	0.14-18.66
<i>Dytaster grandis grandis</i> (Verrill 1884)	R	11638	0.778	0.413	52	106-180	40.69-74.17
<i>Hyphalaster inermis</i> (Sladen 1883)	R	26	2.172	0.949	191	5-79	
Holothuroidea							
<i>Amperima rosea</i> (Perrier 1886) / <i>Ellipinion</i> spp. / <i>Kolga</i> spp.	L	6	2.497	0.958	30614	6-69	0.06-20.01
<i>Benthoodytes</i> sp. / <i>Benthoodytes sordida</i> (Théel 1882)	L	3	2.451	0.938	22	38-418	2.10-805.70
<i>Deima validum validum</i> (Théel 1879)	L	27	2.256	0.877	161	20-107	2.30-122.00
<i>Zygothuria candelabra</i> (Hérouard 1923)	L	17	2.241	0.616	53	50-115	6.64-96.00
<i>Oneirophanta mutabilis</i> (Théel 1879)	L	4	2.508	0.933	5659	15-220	0.18-223.00
<i>Paroriza prouhoi</i> (Hérouard 1902)	L	2	2.539	0.922	244	30-325	0.66-619.00
<i>Peniagone</i> spp. / <i>Peniagone diaphana</i> (Théel 1882)	L	15	1.999	0.835	364	17-115	0.45-25.30
<i>Pseudostichopus aemulatus</i> (Solis-Marin & Billett in Solis-Marin et al. 2004) / <i>Molpadiodemas villosus</i> (Théel 1886b)	L	0.5	2.856	0.918	5179	13-248	0.09-804.00
<i>Psychropotes longicauda</i> (Théel 1882)	L	2	2.652	0.942	2339	16-290	0.28-1574.00
<i>Molpadia blakei</i> (Théel 1886a)	L	12	2.349	0.841	72	26-138	2.01-97.53
Ophiuroidea							
	R	21	1.764	0.877	89	5-95	0.02-3.94
	Disk D	5	2.821	0.797	89	4-26	0.02-3.94
ECHIUURA	L	281	0.990	0.520	24	17-146	0.20-8.04
MOLLUSCA							
Cephalopoda	Arm L	3	2.438	0.597	6	55-255	3.60-555.00
Gastropoda	L	21	1.940	0.797	15	12-78	0.27-15.26

Table 2. Individual specimen preserved wet weight data for PAP taxa where reliable dimension measurement was not possible

Taxon	Range (g)	Median (g)	n
TUNICATA			
<i>Culeolus</i> spp.	0.01 – 2.02	0.34	1599
CNIDARIA			
Zoantharia	0.01 – 0.43	0.10	538
ECHINODERMATA			
<i>Freyastera</i> spp. / <i>Freyella</i> spp.	0.07 – 17.67	0.87	312
Pterasteridae	0.33 – 8.67	4.5	2
Crinoidea	0.05 – 1.59	0.7	13
PORIFERA	5.23 – 11.57	8.0	3

Table 3. Conversion from photograph-measured dimension (oral disk diameter, D, pixels) to preserved specimen dimension (column diameter, C, pixels). Conversion is in the form $C = G \times D^H$, where C is column diameter, D is oral disk diameter and F and G are factors in a relationship determined from n individuals, with goodness of fit, R^2 .

Morphotype	G	H	R²	n
<i>Iosactis vagabunda</i>	0.414	1.075	0.81	45
<i>Sicyonis biotrans</i>	0.015	1.614	0.86	5
<i>Daontesia porcupina</i>	2.527	0.599	0.71	5
<i>Amphianthus bathybium</i>	0.114	1.283	0.83	8

Table 4. Fresh wet weight to preserved wet weight conversions in the form: preserved wet weight (g) = J x fresh wet weight (g), where J is a factor determined by linear regression with zero intercept.

Taxon	J	R ²	n
ANNELIDA			
Polynoidae	0.812	0.995	6
ARTHROPODA			
Cirripedia	0.751	0.98	11
Pycnogonida	0.838	0.98	9
<i>Cerataspis</i> spp.	0.781	0.97	4
<i>Stereomastis</i> spp.	0.822	0.99	8
<i>Munida</i> spp. / <i>Munidopsis</i> spp.	0.780	0.98	7
CNIDARIA			
Actiniaria			
<i>Iosactis vagabunda</i>	0.887	0.99	13
<i>Parasicyonis biotrans</i>	0.784	0.998	7
<i>Daontesia porcupina</i>	0.818	0.99	8
<i>Actinauge abyssorum</i>	0.722	0.99	13
<i>Amphianthus bathybium</i>	0.664	0.95	13
<i>Segonzactis platypus</i>	0.681	0.98	9
<i>Sicyopus commensalis</i>	0.966	0.96	9
Zoanthidea	0.755	0.99	5
<i>Umbellula</i> spp.	0.656	0.98	9
ECHINODERMATA			
Asteroidea			
<i>Pythonaster atlantidis</i>	0.845	0.999	3
<i>Styracaster chuni</i> / <i>Styracaster horridus</i>	0.873	0.999	10
<i>Dytaster grandis grandis</i>	0.820	0.998	11
<i>Hyphalaster inermis</i>	0.873	0.99	8
<i>Freyella</i> spp. / <i>Freyastera</i> spp.	0.886	0.99	12
Pterasteridae	0.820	NA	1
Holothuroidea			
<i>Amperima rosea</i>	0.627	0.995	13
<i>Benthodytes</i> spp.	0.470	0.99	8
<i>Deima validum validum</i>	0.648	0.98	12
<i>Ellipinion</i> spp. / <i>Kolga</i> spp.	0.460	0.99	10
<i>Zygothuria candelabri</i>	0.604	0.96	12
<i>Oneirophanta mutabilis</i>	0.539	0.99	6
<i>Paroriza prouhoi</i>	0.527	0.96	10
<i>Peniagone</i> spp.	0.684	0.93	11
<i>Pseudostichopus aemulatus</i> / <i>Molpadiodemas villosus</i> / <i>Pseudostichopus</i> spp.	0.413	0.93	11
<i>Psychropotes longicauda</i> / <i>Psychropotes semperiana</i> (Théel 1882)	0.505	0.96	6
<i>Molpadia</i> spp.	0.576	0.98	9
Crinoidea	0.680	0.94	8
Echinoidea	0.570	NA	1
Ophiuroidea	0.835	0.996	10
ECHIURA	0.670	0.99	6
MOLLUSCA			
Cephalopoda	0.415	0.99	7
Gastropoda	0.861	0.99	13
Bivalvia	0.715	0.97	8
TUNICATA	0.657	0.99	8
SIPUNCULA	0.649	0.99	5
PORIFERA	0.791	0.97	8