



Figure 1.
Boreholes used in long distance lithological correlation using natural gamma
borehole logs

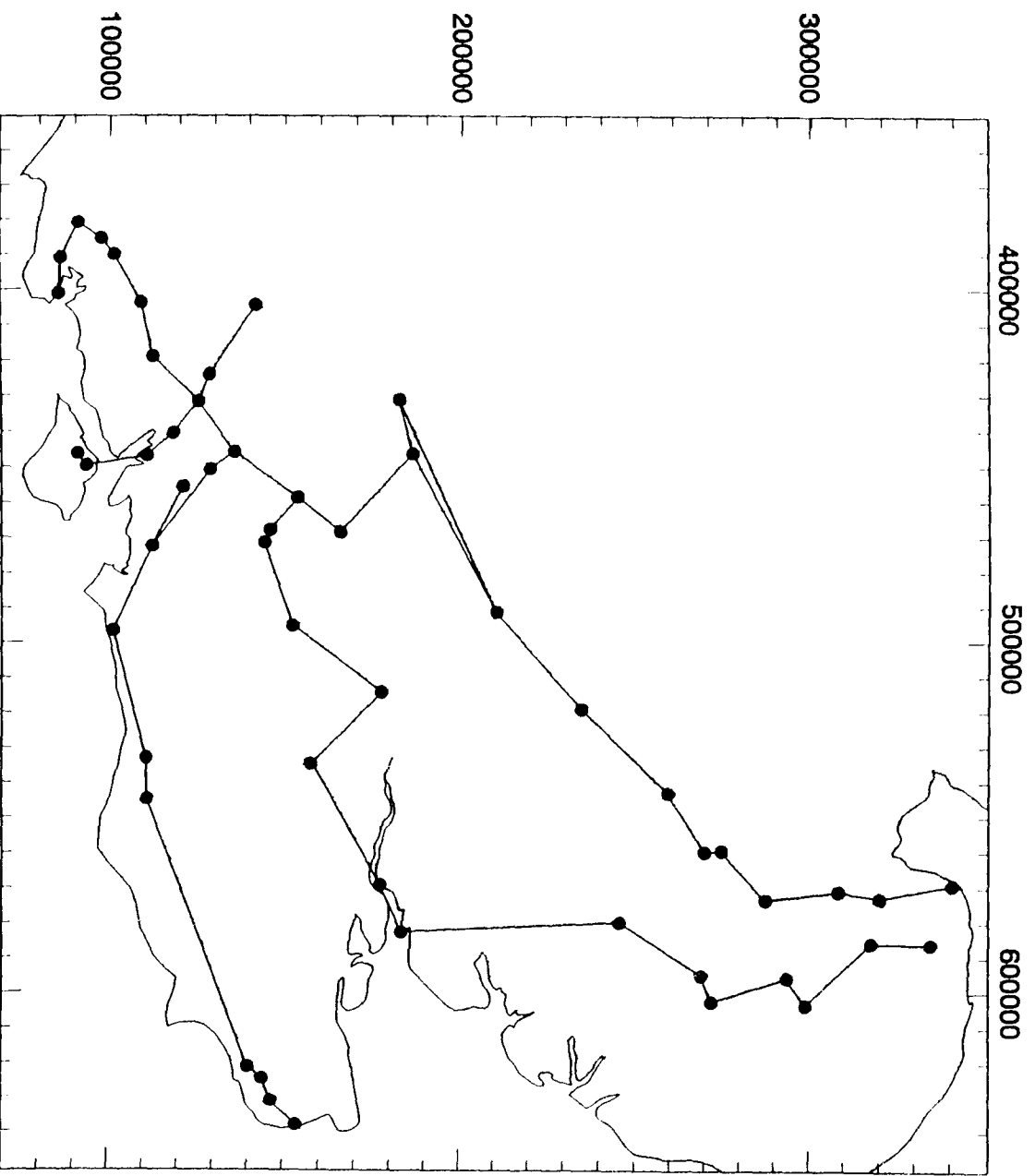


Figure 2.
COMPARISON OF NATURAL GAMMA LOGS TO SHOW THE EFFECTS
OF FAULTING IN THE ALBIAN, FROM LOMER TO HORNDEAN
Vertical scale 1:600

BOREHOLE	GRID REFERENCE	1:10000 QUARTER SHEET	ALBIAN BASEMENT
Lomer	SU 59590 23560	SUS2SE	Lower Greensand
Horndean	SU 71537 12602	SU71SW	Lower Greensand

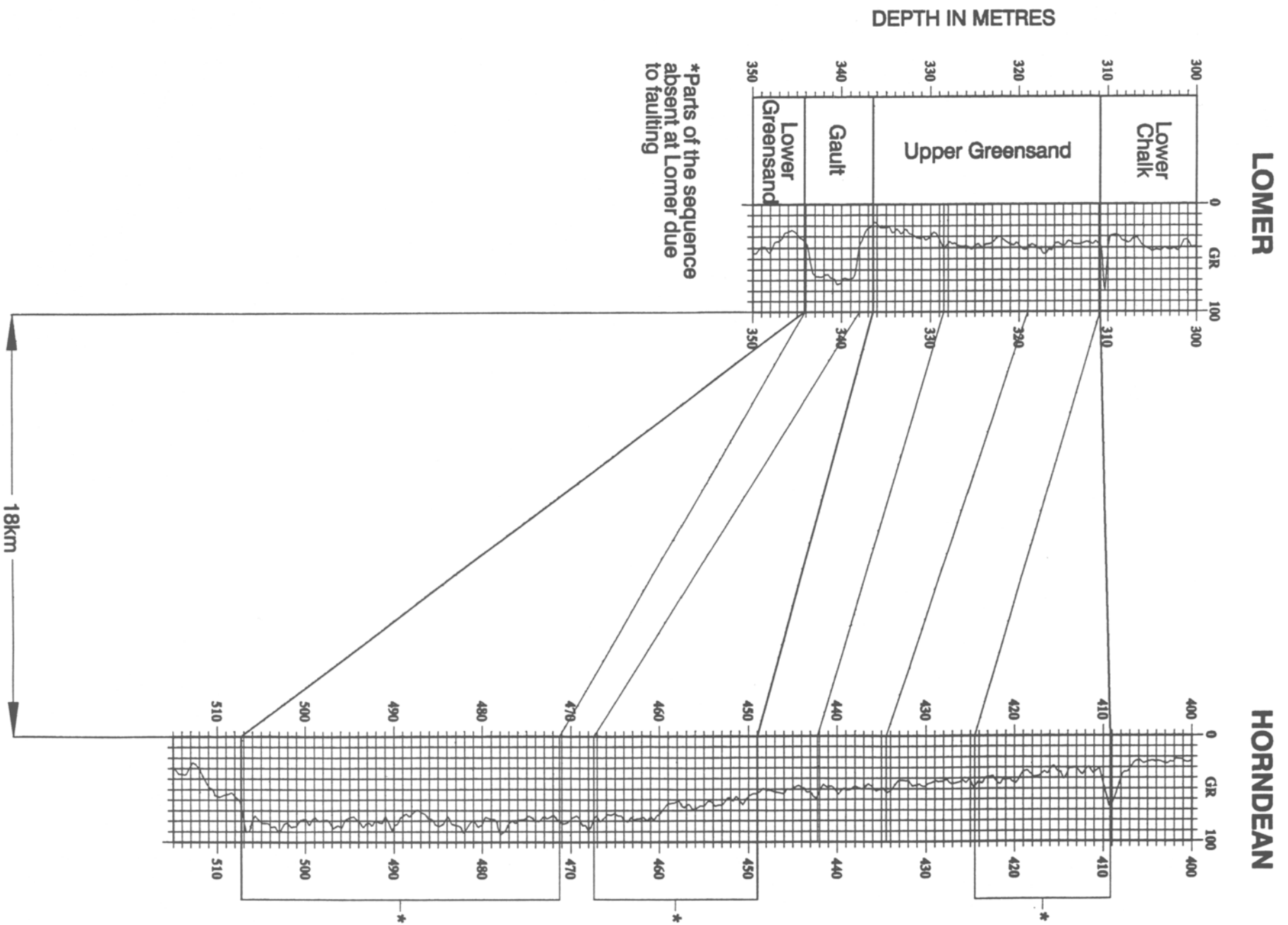
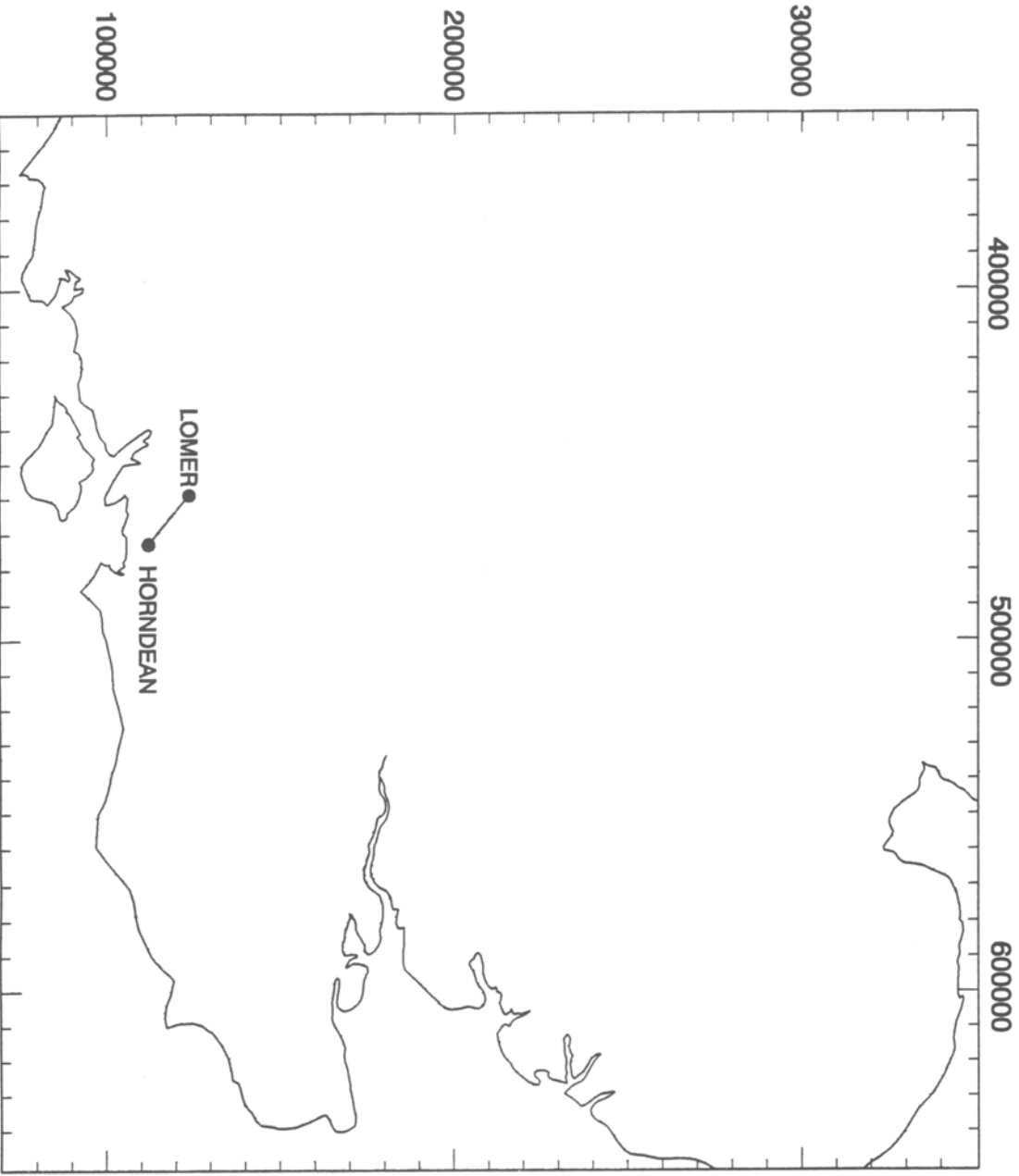
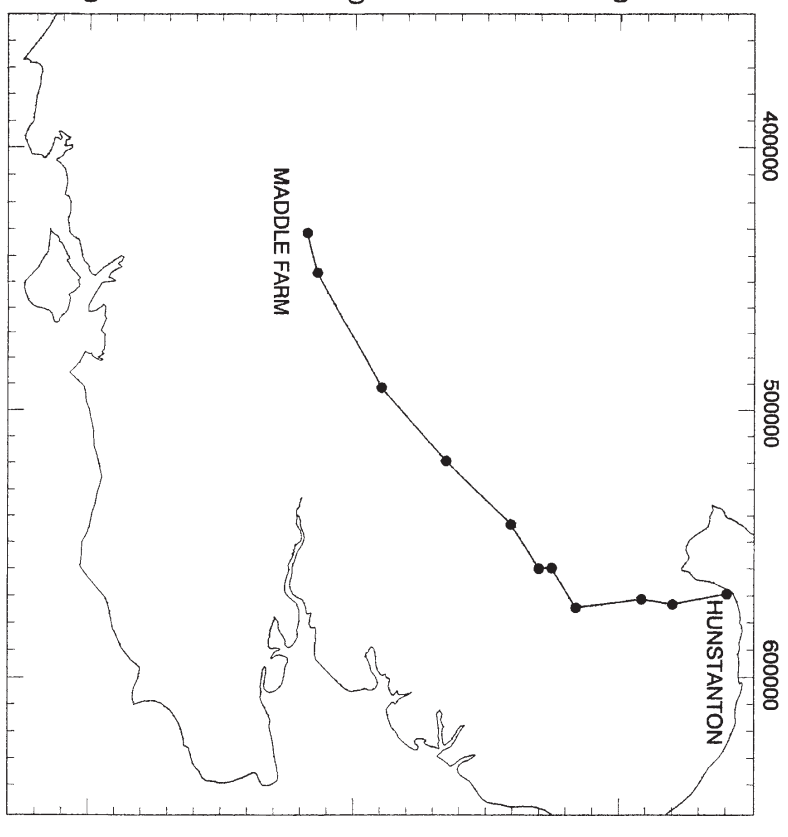


Figure 3.
COMPARATIVE NATURAL GAMMA LOGS OF THE ALBIAN:
MADDLE FARM (nr LAMBOURN) TO HUNSTANTON
Vertical scale 1:500

BOREHOLE	GRID REFERENCE	1:10000 QUARTER SHEET	ALBIAN BASEMENT
Maddie Farm	SU 30530 82330	SU38SW	Lower Greensand
Harwell	SU 46760 86450	SU48NE	Lower Greensand
Tring	SP 91210 10360	SP91SW	Lower Greensand
Arlesey	TL 18870 34630	TL13SE	Lower Greensand
Cambridge	TL 43160 59490	TL45NW	Lower Greensand
Klondyke Farm	TL 59400 70100	TL57SE	Lower Greensand
Soham	TL 59280 74480	TL57SE	Lower Greensand
Lakenheath	TL 74800 83000	TL78SW	Carstone (LGS)
Marham	TF 70570 08030	TF70NW	Carstone (LGS)
Gayton	TF 72800 19740	TF71NW	Carstone (LGS)
Hunstanton	TF 68670 40790	TF64SE	Carstone (LGS)



MADDLE FARM

HARWELL

TRING

ARLESEY

CAMBRIDGE

KLONDYKE FARM

SOHAM

LAKENHEATH

MARHAM

GAYTON

HUNSTANTON

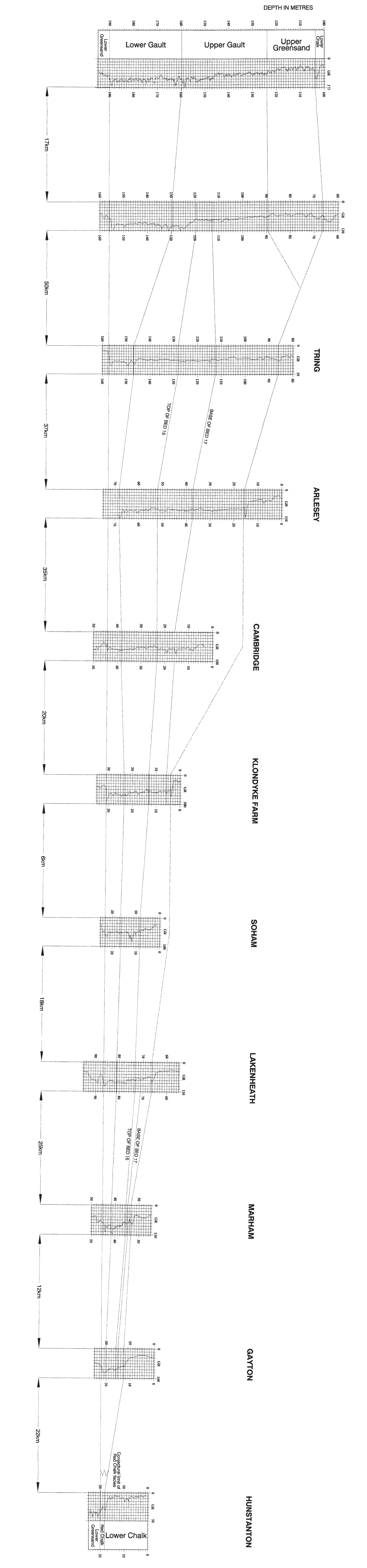


Figure 4.
COMPARATIVE NATURAL GAMMA LOGS OF THE ALBIAN:
CANVEY ISLAND TO SOUTH CREAKS
Vertical scale 1:600

BOREHOLE	GRID REFERENCE	1:10000 QUARTER SHEET	ALBIAN BASEMENT
Canvey Island	TQ 82150 83300	TQ88SW	Devonian
Clare	TL 78980 45330	TL74NE	Silurian
Stowlangtoft	TL 94800 68800	TL96NW	Silurian
Four Ashes	TL 02200 71800	TM07SW	Devonian
Breckles	TL 95510 94690	TL99SE	Carstone (LGS)
Ellingham	TM 02620 98470	TM09NW	Carstone (LGS)
Lexham	TF 85000 18000	TF81NE	Carstone (LGS)
South Creaks	TF 85730 34019	TF83SE	Carstone (LGS)

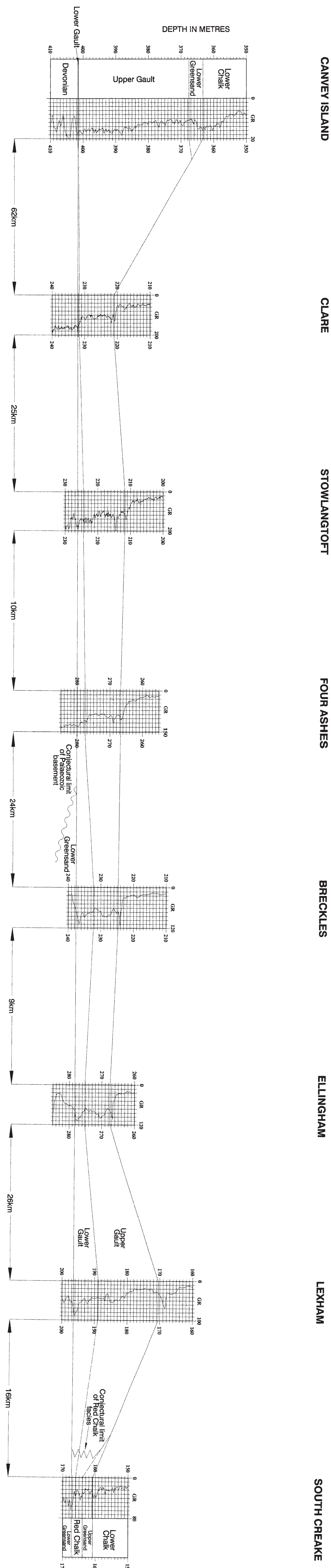
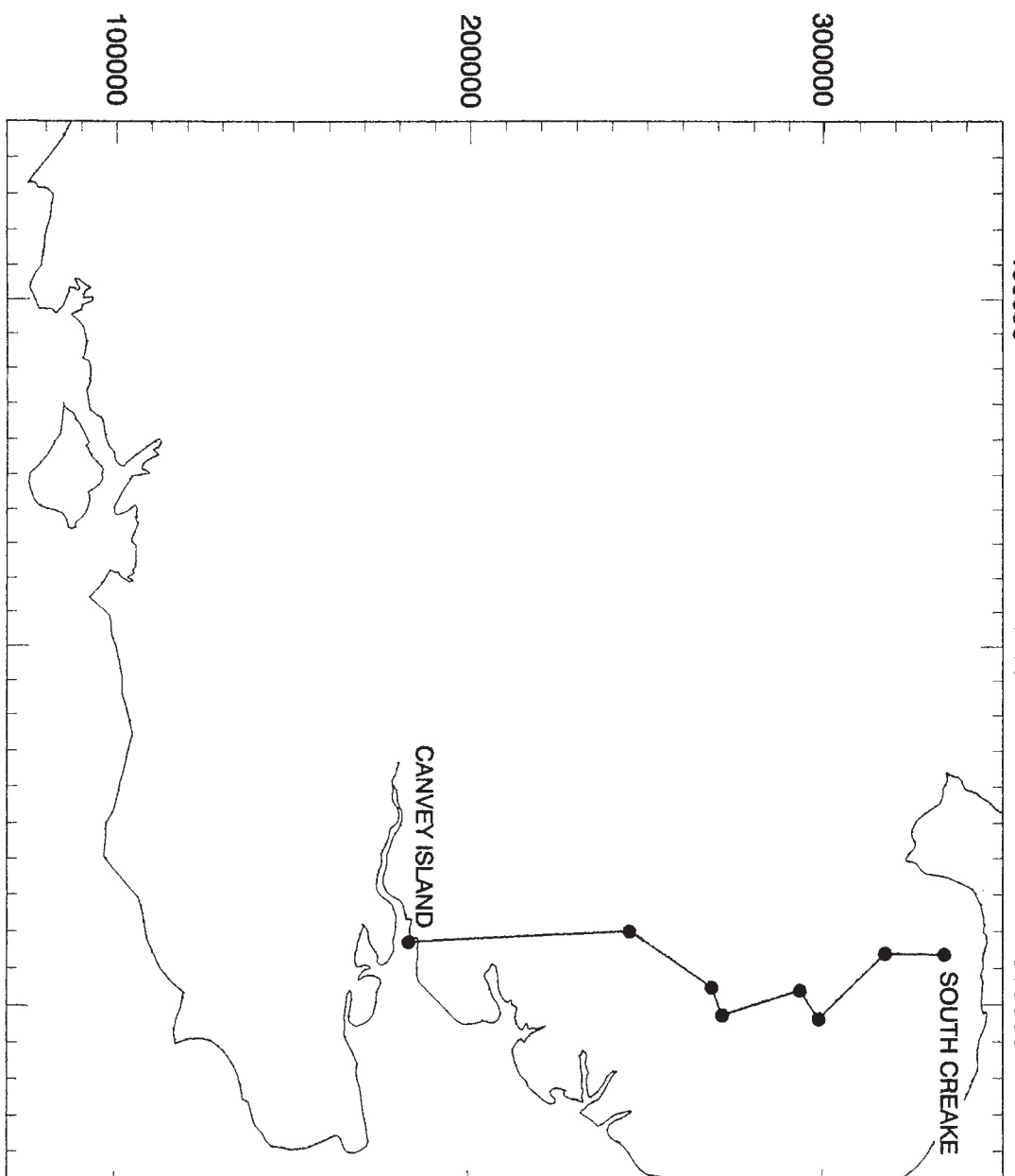


Figure 5.
COMPARATIVE NATURAL GAMMA LOGS OF THE ALBIAN:
HOOK LANE TO CANVEY ISLAND
Vertical scale 1:600

BOREHOLE	GRID REFERENCE	1:10000 QUARTER SHEET	ALBIAN BASEMENT
Hook Lane	SU 57540 53880	SUS5SE	Lower Greensand
Herriard	SU 57880 46550	SU64NE	Lower Greensand
Humbly Grove	SU 71150 44840	SU74SW	Lower Greensand
Strat A1	SU 94800 52800	SU95SW	Lower Greensand
Stanwell	TQ 06480 74010	TQ07SE	Lower Greensand
Warlingham	TQ 34760 57190	TQ35NW	Lower Greensand
Cliffe at Hoo	TQ 69030 77110	TQ67NE	Lower Greensand
Canvey Island	TQ 82150 83300	TQ88SW	Devonian

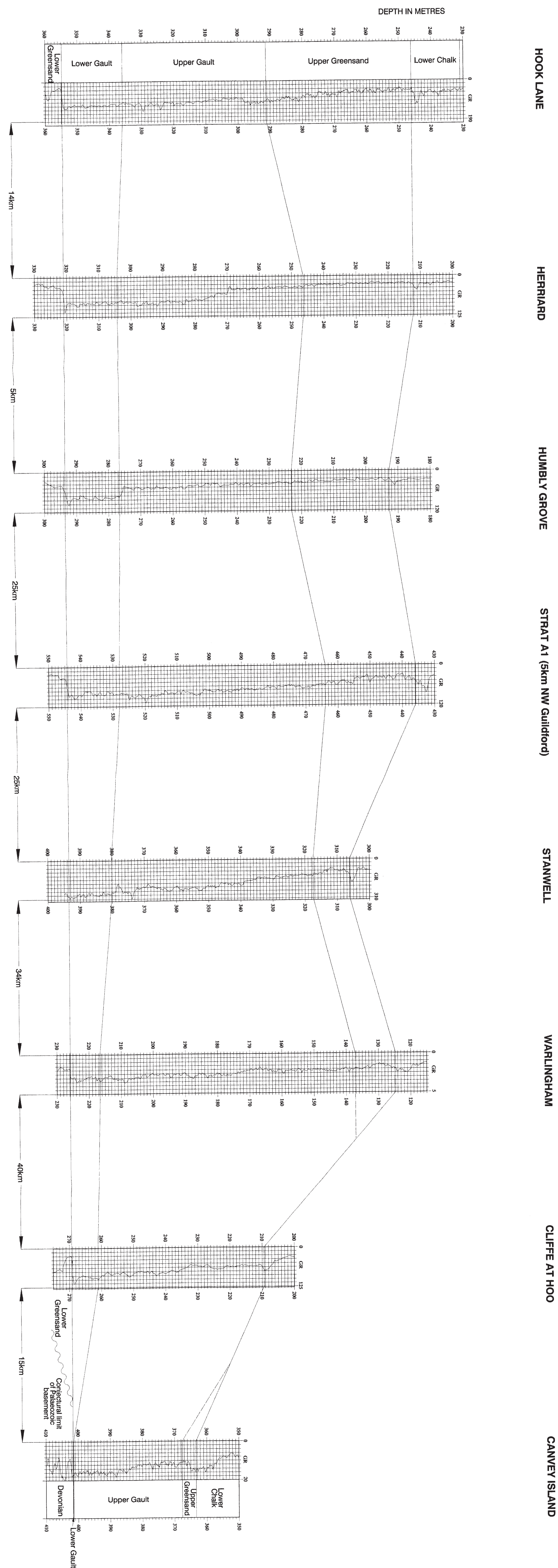
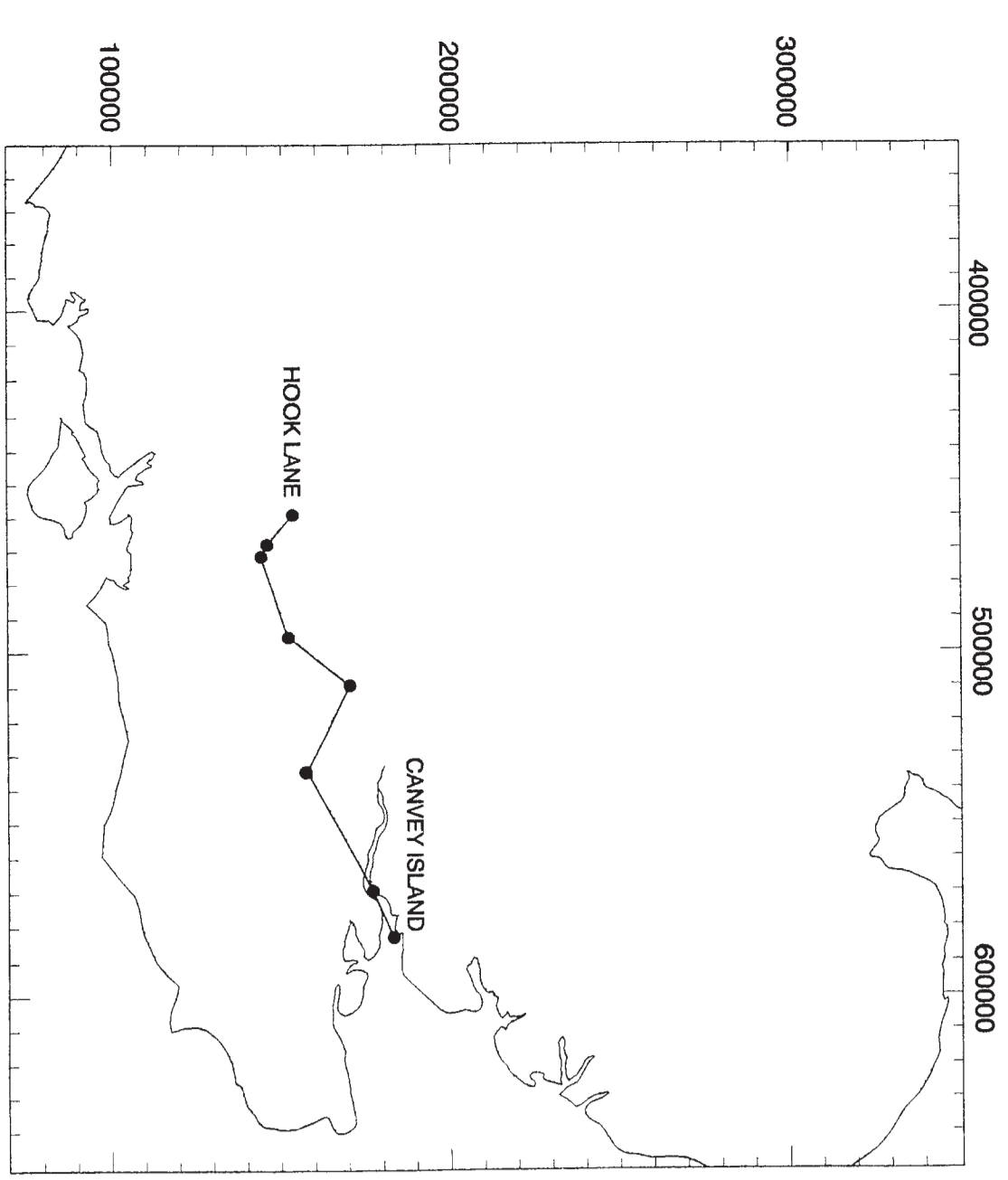


Figure 6.
COMPARATIVE NATURAL GAMMA LOGS OF THE ALBIAN:
STOCKBRIDGE TO GLYNDEBOURNE
Vertical scale 1:600

BOREHOLE	GRID REFERENCE	1:10000 QUARTER SHEET	ALBIAN BASEMENT
Stockbridge	SU 45100 35499	SU43NE	Lower Greensand
Winchester	SU 50340 28490	SU52NW	Lower Greensand
Horn dean	SU 71537 12602	SU71SW	Lower Greensand
Middleton	SU 97450 01400	SU90SE	Lower Greensand
Stammer	TQ 32630 11420	TQ31SW	Lower Greensand
Glyndebourne	TQ 44210 11400	TQ41SW	Lower Greensand

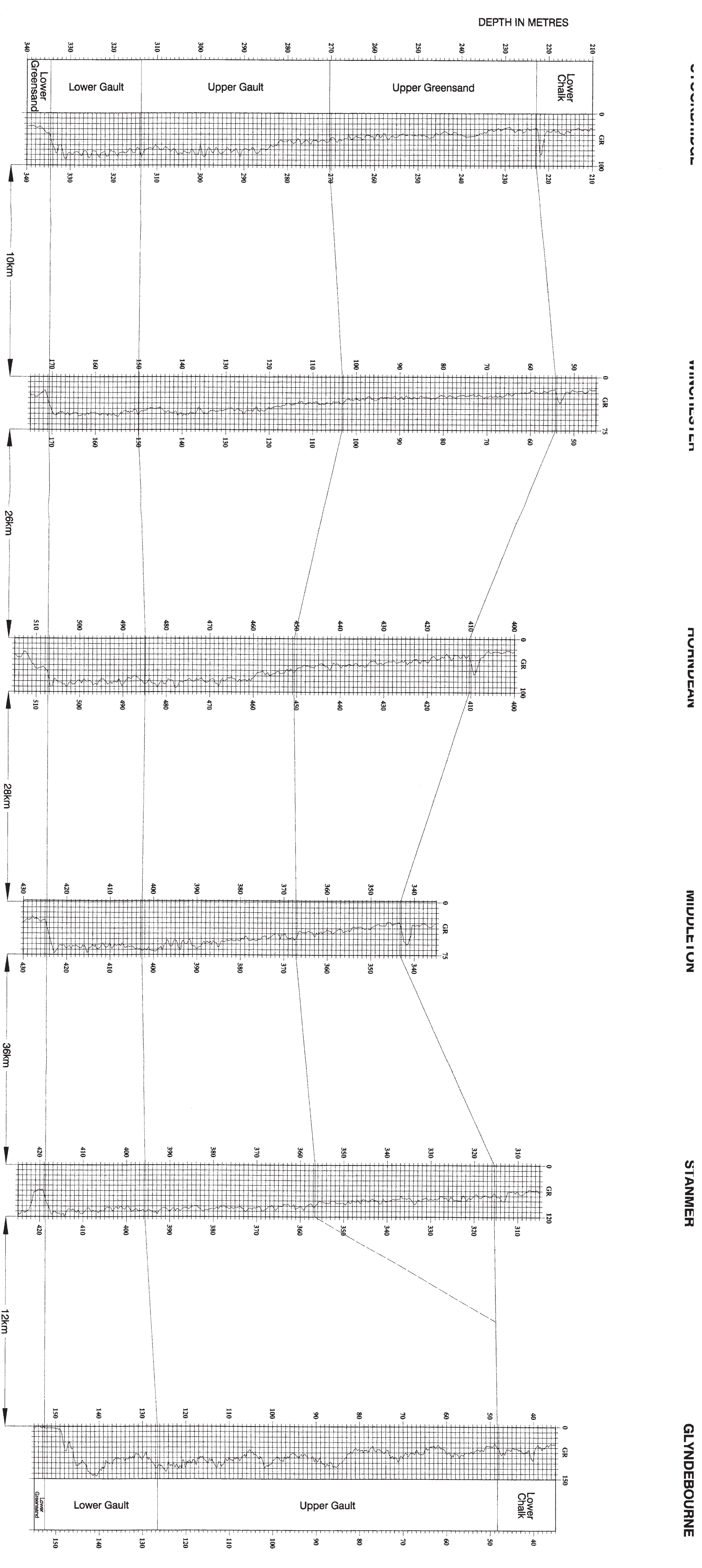
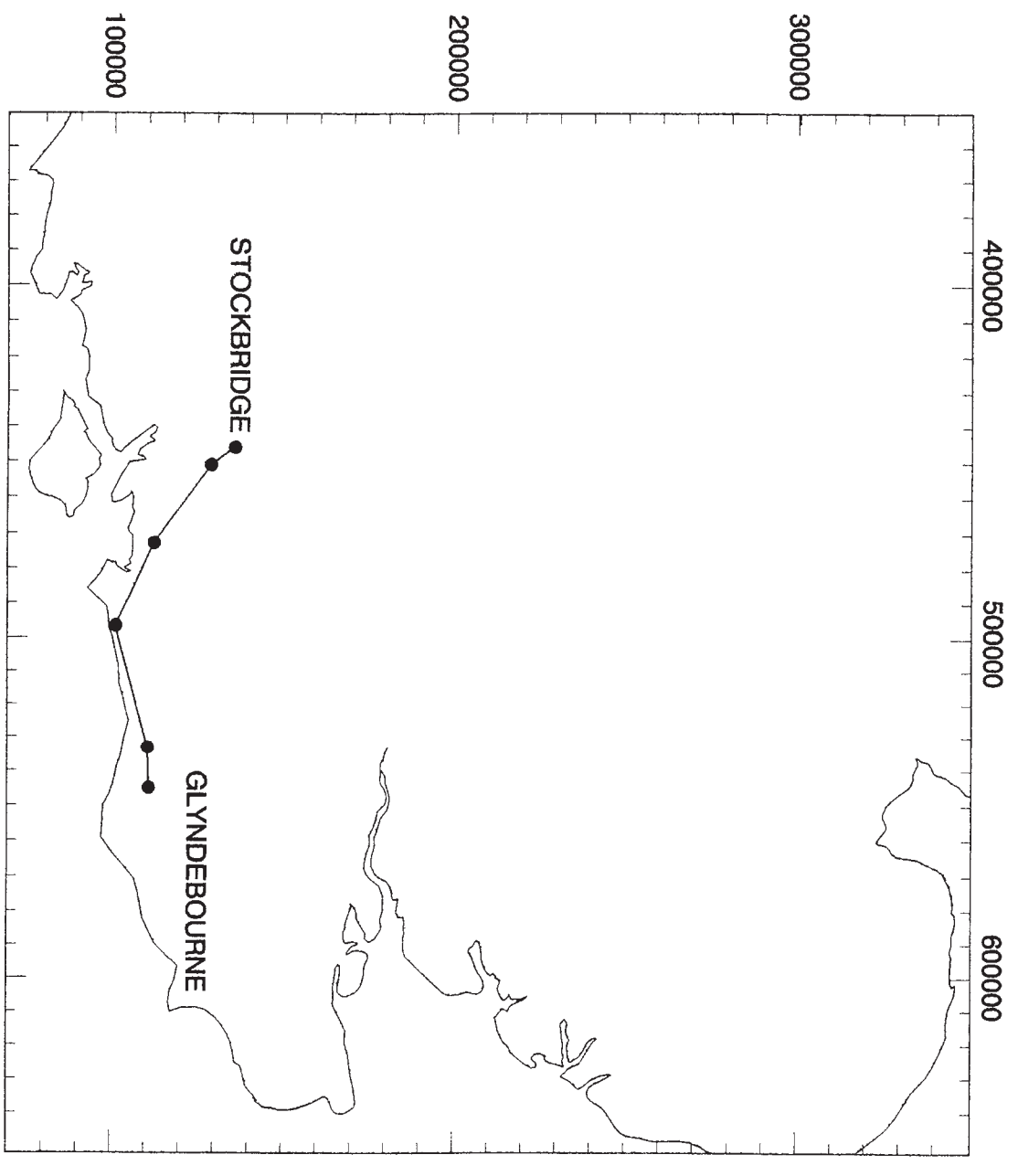
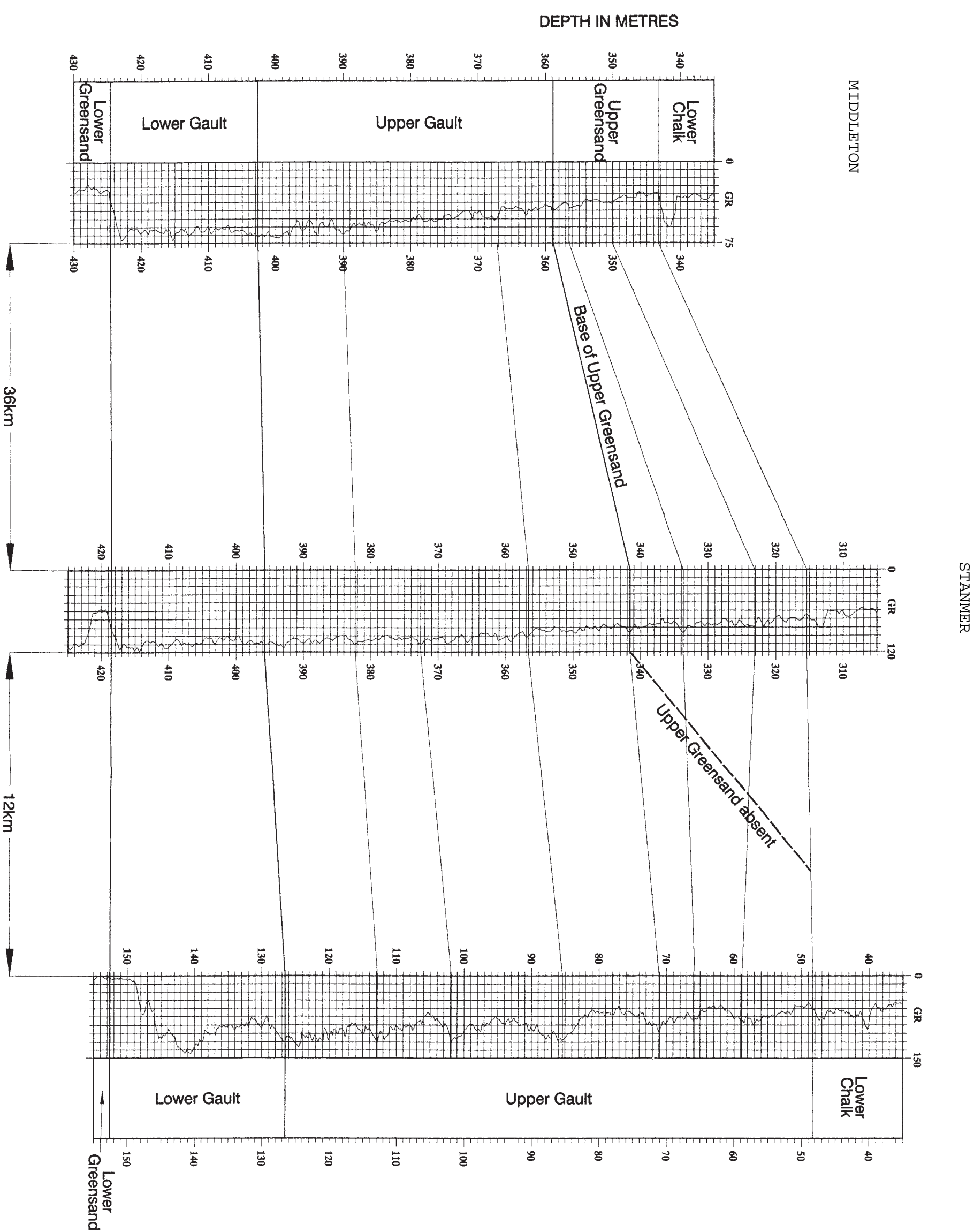
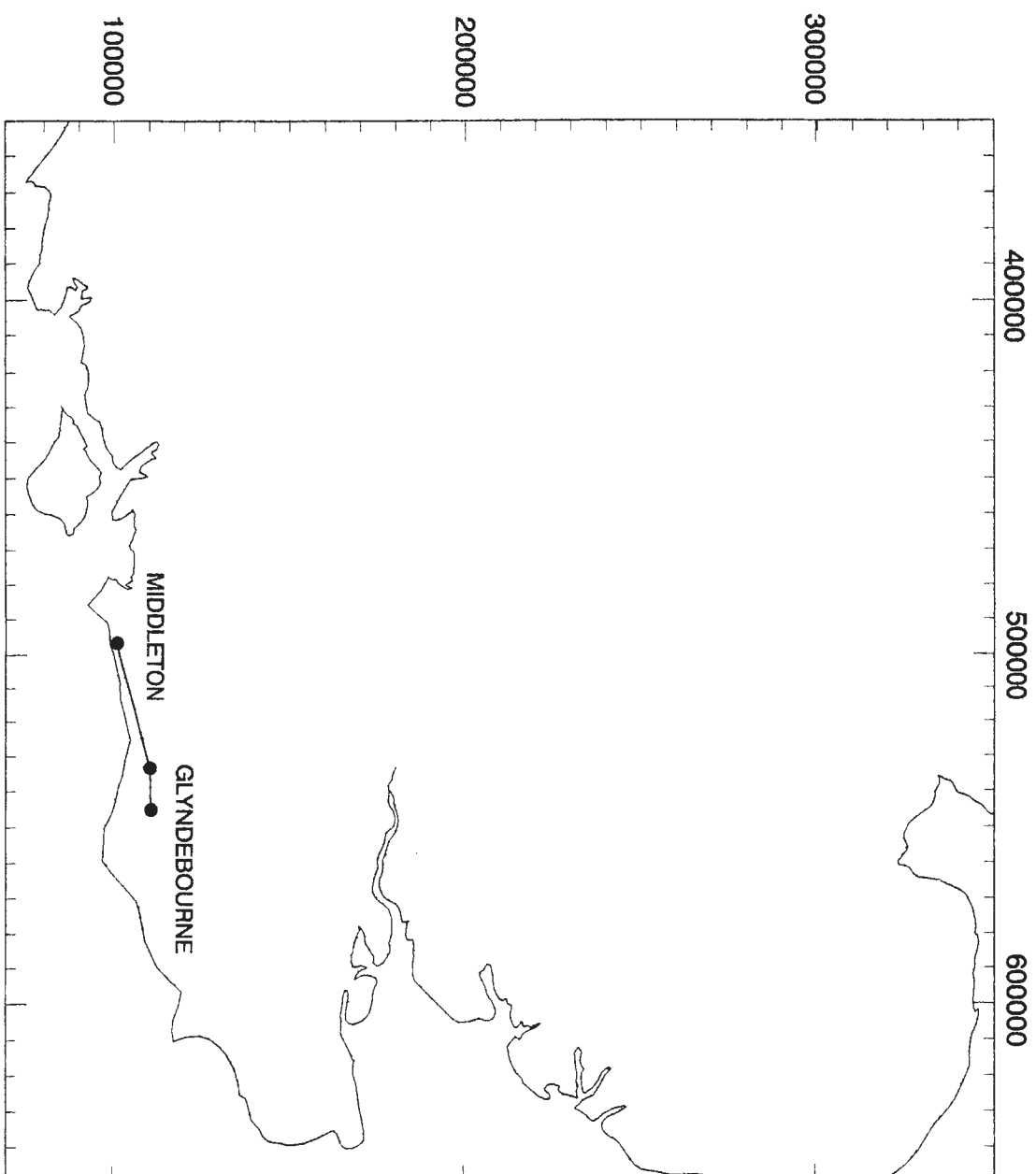


Figure 7.
COMPARATIVE NATURAL GAMMA LOGS OF THE ALBIAN:
LATERAL CORRELATION FROM THE UPPER GAULT IN GLYNDEBOURNE
INTO THE UPPER GREENSAND IN STANMER AND MIDDLETON
Vertical scale 1:600

BOREHOLE	GRID REFERENCE	1:100000 QUARTER SHEET	ALBIAN BASEMENT
Middleton	SU 97450 01400	SU90SE	Lower Greensand
Stanmer	TQ 32630 11420	TQ31SW	Lower Greensand
Glyndebourne	TQ 44210 11400	TQ41SW	Lower Greensand



GLYNDEBOURNE

Figure 8.
 COMPARATIVE NATURAL GAMMA LOGS OF THE ALBIAN: SOUTH-EAST KENT
 NOTE: - Owing to the absence of biozonal data and the distance to where such zones are established, it is not possible to differentiate the Upper/Lower Gault in Kent. Glyndebournne is added for thickness comparison only.
 Vertical scale 1:600

BOREHOLE	GRID REFERENCE	1:10000 QUARTER SHEET	ALBIAN BASEMENT
Glyndebournne	TQ 44210 11400	TQ41SW	Lower Greensand
Paddlesworth Court	TR 19900 40410	TR14SE	Lower Greensand
Swanton Court	TR 23865 44309	TR24SW	Lower Greensand
Eastling Wood	TR 30330 47290	TR34NW	Lower Greensand
Northwall Road	TR 36810 53560	TR35SE	Lower Greensand

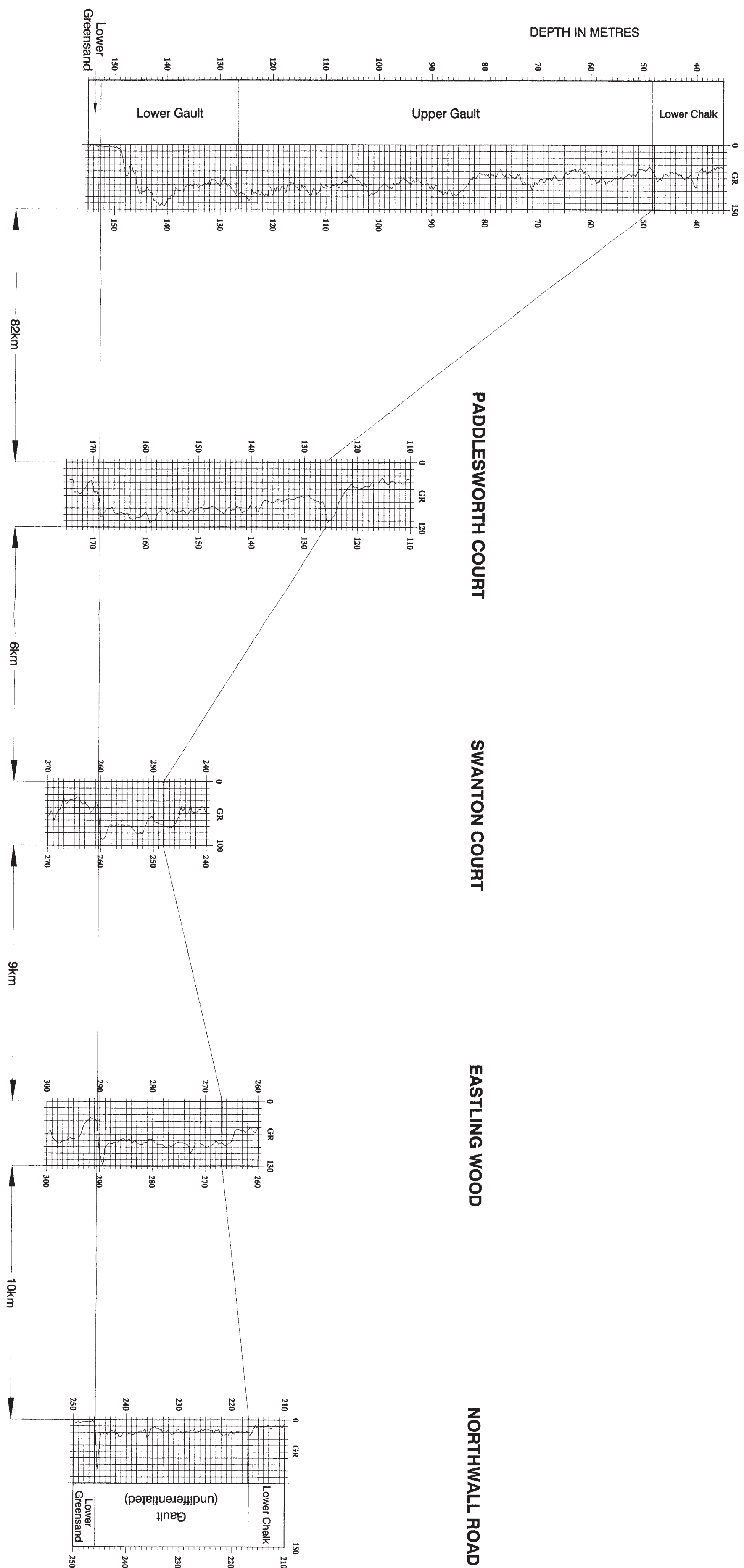
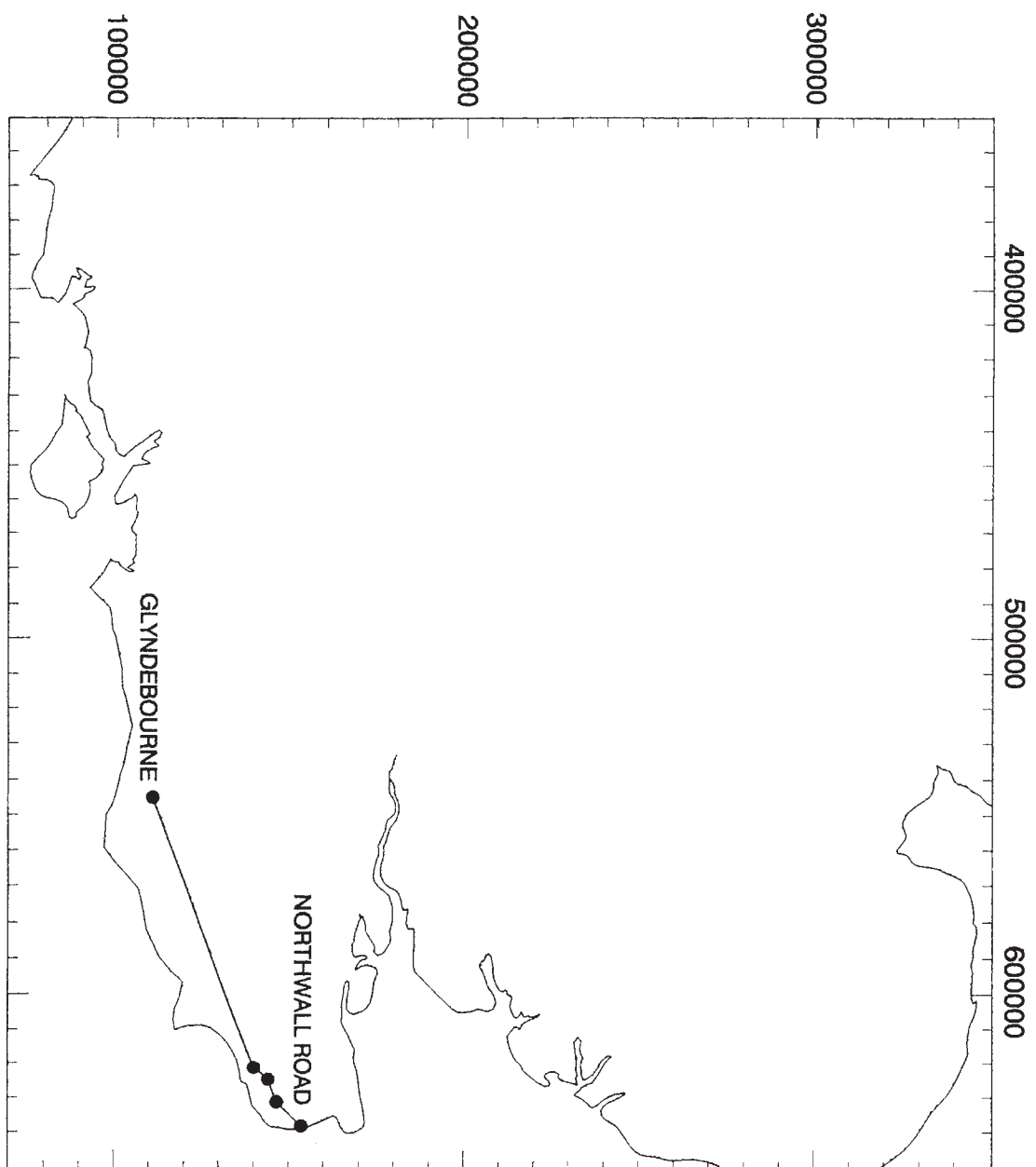
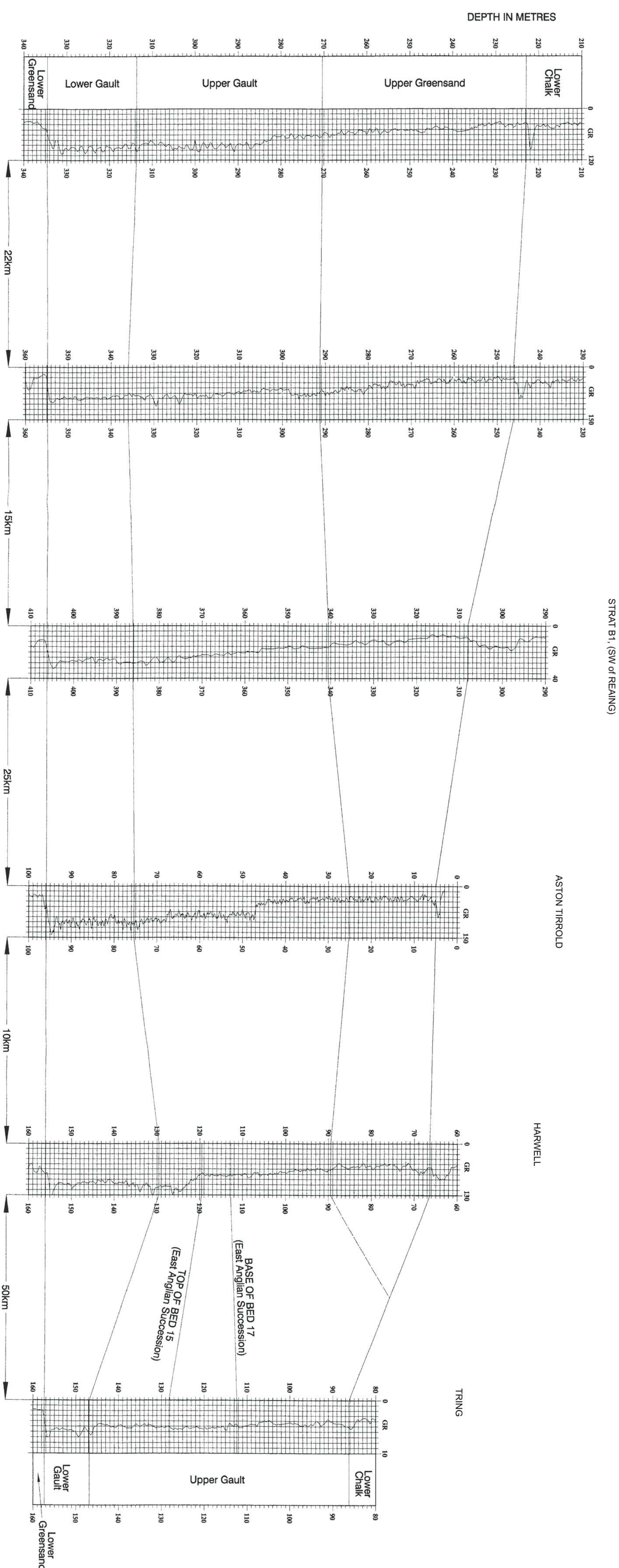
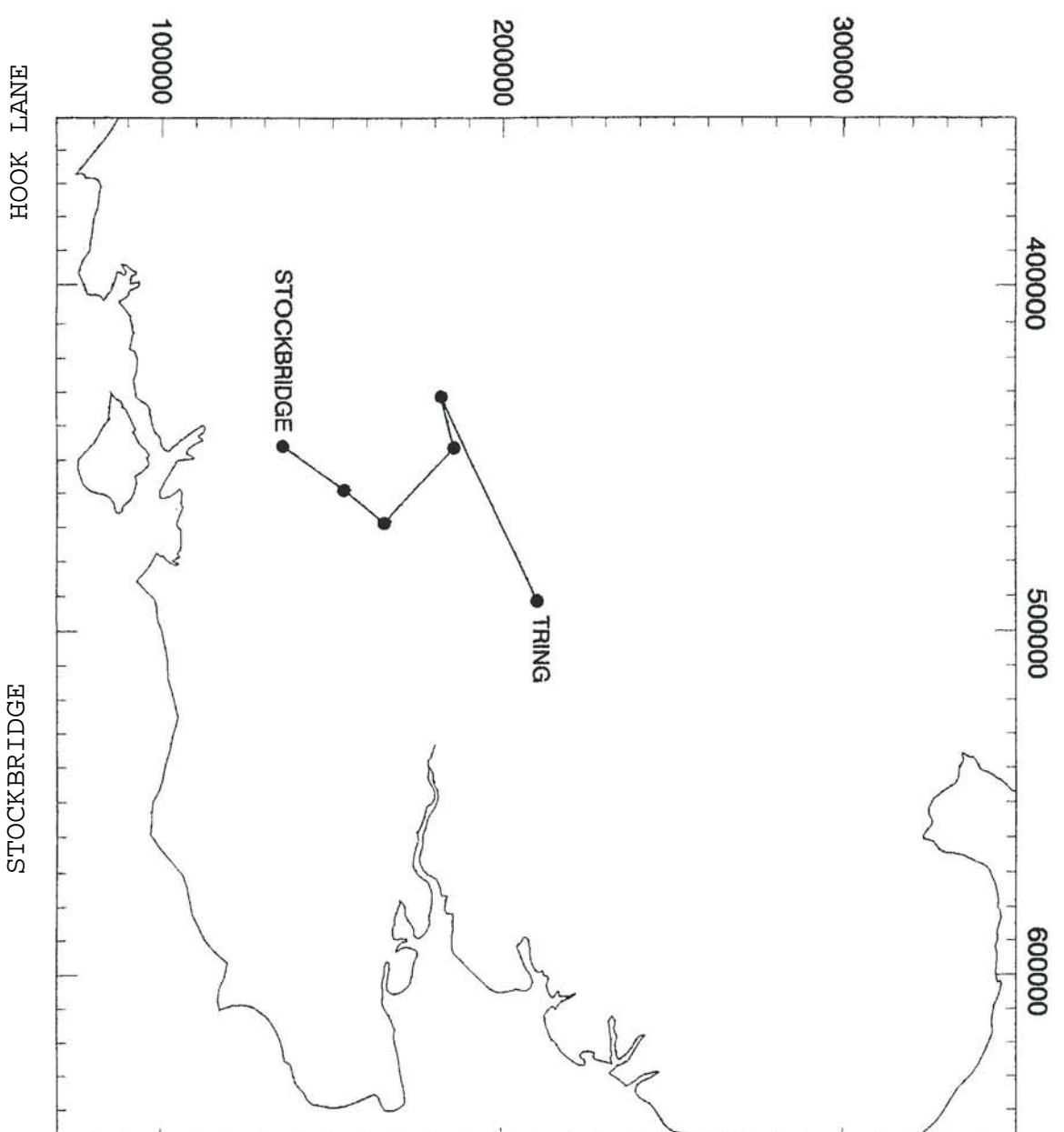


Figure 9
COMPARATIVE NATURAL GAMMA LOGS OF THE ALBIAN:
STOCKBRIDGE TO TRING
Vertical scale 1:600

BOREHOLE	GRID REFERENCE	1:10000 QUARTER SHEET	ALBIAN BASEMENT
Stockbridge	SU 45100 35499	SU43NE	Lower Greensand
Hook Lane	SU 57540 53880	SU55SE	Lower Greensand
Strat B1	SU 68200 65200	SU66NE	Lower Greensand
Aston Tirrold	SU 55790 87220	SU58NE	Lower Greensand
Harwell	SU 46760 86450	SU48NE	Lower Greensand
Tring	SP 91210 10360	SP91SW	Lower Greensand



STOCKBRIDGE

HOOK LANE

STRAT B1, (SW of REAING)

ASTON TIRROLD

HARWELL

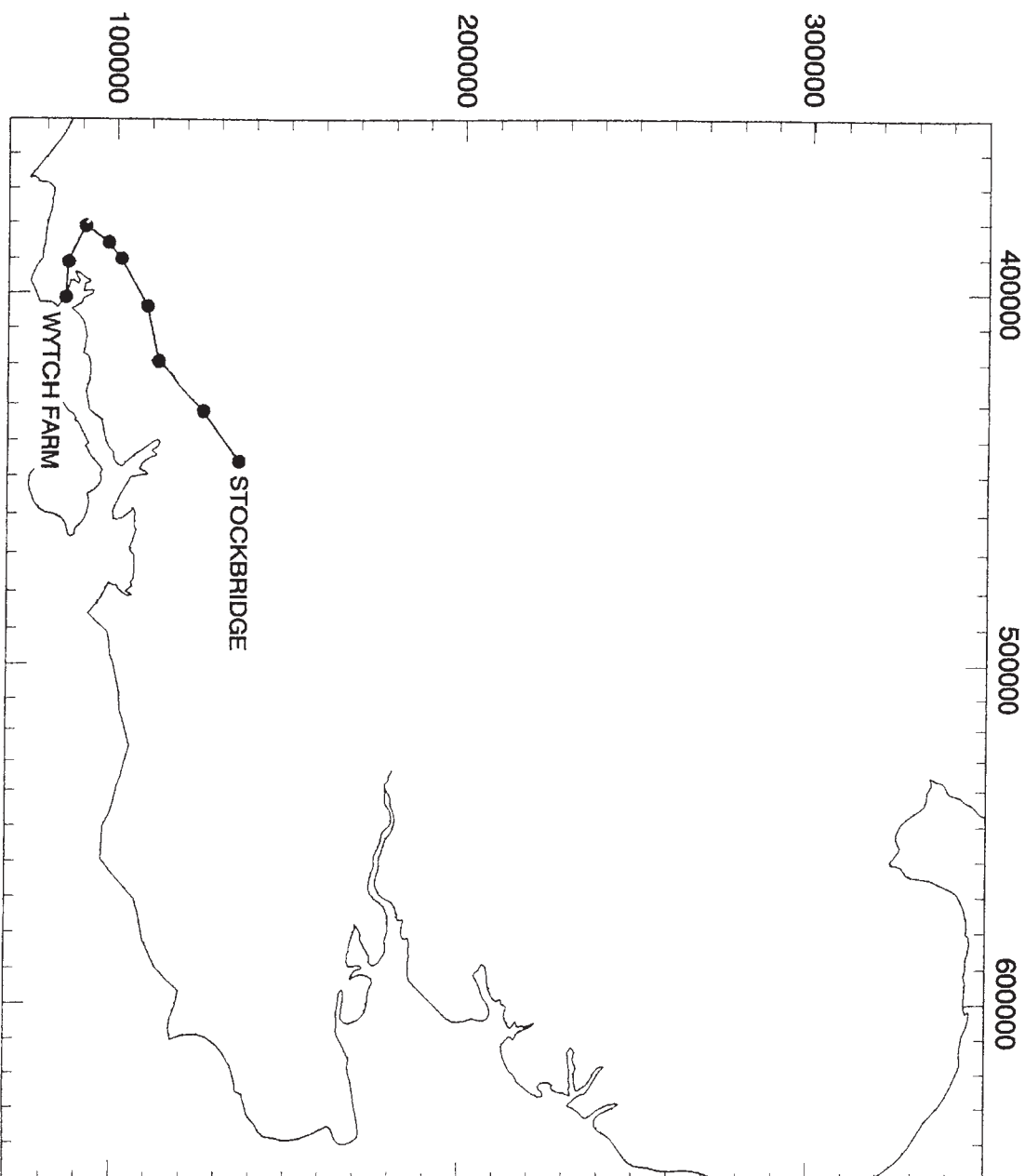
TRING

HOOK LANE

STOCKBRIDGE

Figure 10
COMPARATIVE NATURAL GAMMA LOGS OF THE ALBIAN:
WYTCHE FARM TO STOCKBRIDGE
Vertical scale 1:500

BOREHOLE	GRID REFERENCE	1:10000 QUARTER SHEET	ALBIAN BASEMENT
Wyche Farm	SZ 01043 85742	SZ08NW	Oxfordian (Jur.)
Wareham	SY 90590 87210	SY98NW	Lower Greensand
Waddock Cross	SY 80350 91250	SY89SW	Kellaways(Jur.)
Winterbourne Kingston	SY 84700 97900	SY89NW	Lower Greensand
Spetsbury	ST 89420 02300	ST80SE	Lower Greensand
Cranbourne	SU 03408 09073	SU00NW	Lower Greensand
Fordingbridge	SU 18760 11800	SU11SE	Lower Greensand (Jur.)
Lockerley	SU 30680 25910	SU32NW	Lower Greensand
Stockbridge	SU 45100 35499	SU43NE	Lower Greensand



WYTCHE FARM

WAREHAM

WADDOCK CROSS

WINTERBOURNE KINGSTON

SPETSIBURY

CRANBOURNE

FORDINGBRIDGE

LOCKERLEY

STOCKBRIDGE

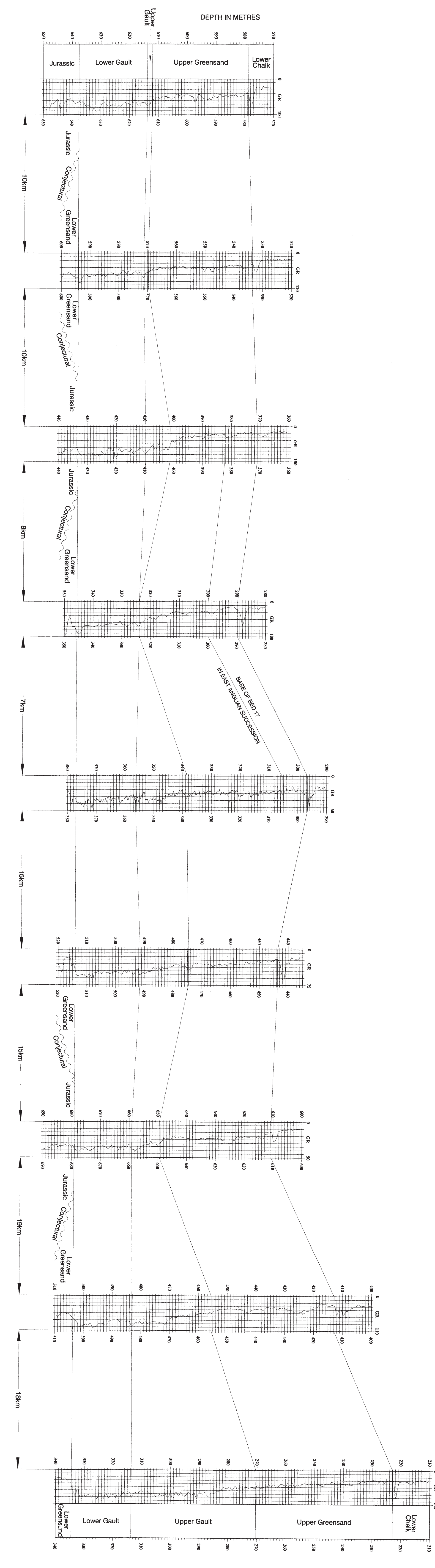
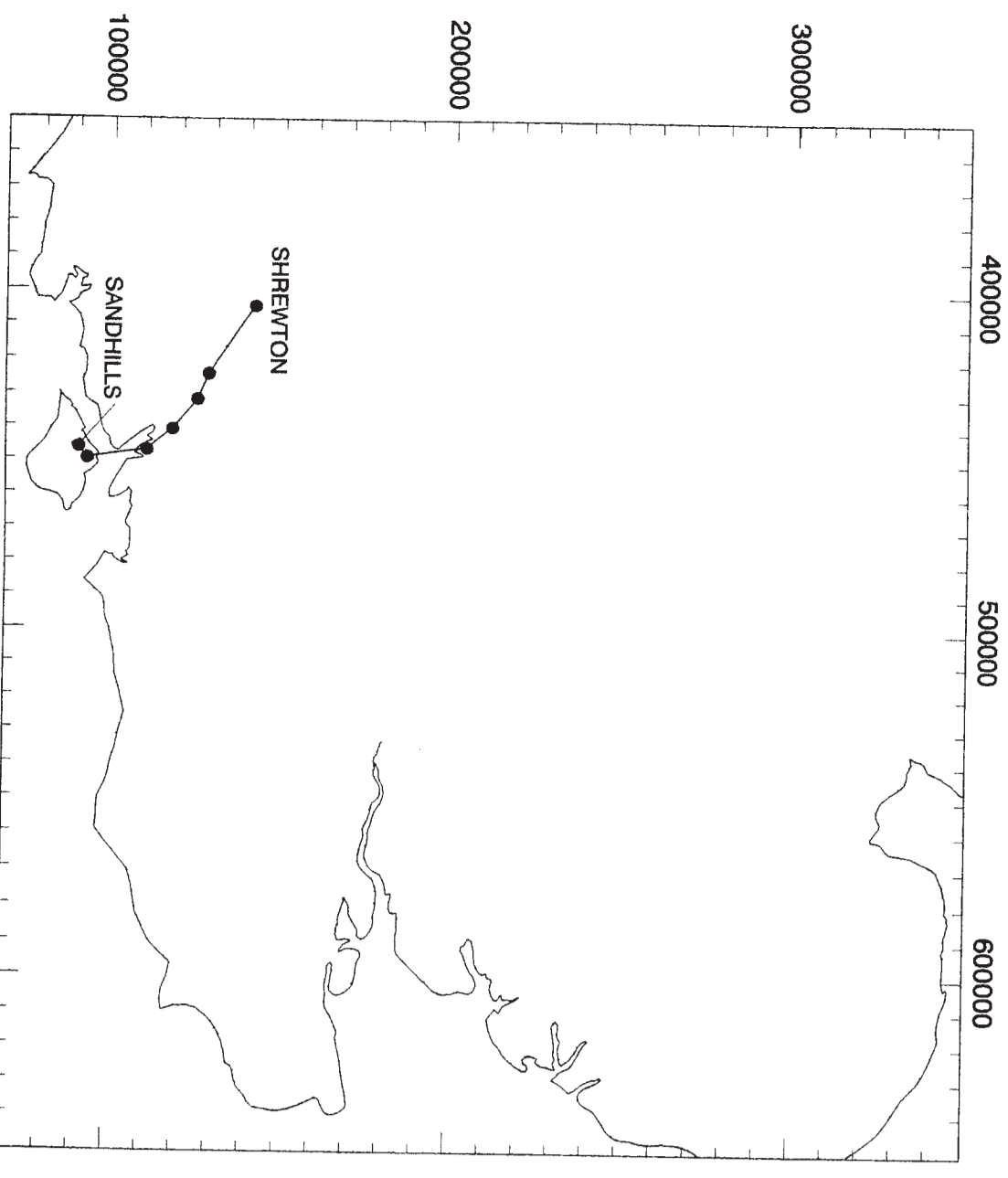


Figure 11.
COMPARATIVE NATURAL GAMMA LOGS OF THE ALBIAN:
SANDHILLS TO SHREWTON
Vertical scale 1:600

BOREHOLE	GRID REFERENCE	1:10000 QUARTER SHEET	ALBIAN BASEMENT
Sandhills	SZ 45710 90850	SZ49SE	Lower Greensand
Cowes	SZ 60040 94170	SZ59SW	Lower Greensand
Southampton	SU 41559 12018	SU41SW	Lower Greensand
Chilworth	SU 39279 17982	SU31NE	Lower Greensand
Lockerley	SU 30680 25910	SU32NW	Lower Greensand
Farley	SU 23589 28529	SU22NW	Lower Greensand
Shrewton	SU 03137 41989	SU04SW	Lower Greensand



SANDHILLS

COWES

SOUTHAMPTON

CHILWORTH

LOCKERLEY

FARLEY

SHREWTON

